

# Madison Bead Society

---

PO Box 1563, Madison, WI 53701-1563 | [info@madisonbeadsociety.org](mailto:info@madisonbeadsociety.org) | [www.madisonbeadsociety.org](http://www.madisonbeadsociety.org)

## President Letter – October 2021

### October 28, 2021 : Bead Loom

**Location:** Meant to Bead, 201 East Main St., Sun Prairie

**Date and time:** Tues. Oct. 26th from 6:30 to 8:30, p.m. (Board meeting from 6:00-6:30)

**Supplies:** bead loom, beading thread (Nymo will work and so will Wildfire), size 10 beading needle, 3 colors of seed beads either size 8 or size 6 [Editor's Note: if you haven't done bead looming before, use size 6 beads; you can mix sizes if you have more experience]

Mary Jo will go over the basics of bead looming. There will be a couple extra looms at the meeting. Mary Jo also supplied me with a pattern (last page), so we're all on the same page. I'll have extra copies at the meeting. [I apologize for the smudged flower in the top pattern.] Each pattern is the same width, 6 strings. Use black or white thread or a color to match the background color you selected.

### MBS Table at Art Glass and Bead Show – November 20 and 21, 2021

Classes on Fri. Nov. 19<sup>th</sup> and the vendor hall is open Sat. and Sun. Find more information here: <http://www.beadshowmadison.com/>

MBS will have a table at the show and we'll be looking for volunteers to staff it. New this year – **COAT CHECK!** Our table will be outside the vendor hall and we'll be offering coat check for \$1 per coat or bag. The vendor hall opens at 10:00 but we need to staff the table starting at 9:00 to catch early arrivals. The vendor hall closes at 5:00 at Sat. and 4:00 on Sun. To ensure good coverage, and people can take breaks, we need 2 people staffing the table, especially at peak times.

### Membership Renewal

Still accepting renewals for the 2021-22 program year. Dues have not changed. Renewal forms were mailed to everyone (if you joined after March 1, 2021, your membership expires next Aug.). Don't have the form? The one on the website will work since the dues haven't changed (<https://madisonbeadsociety.org/join-us>).

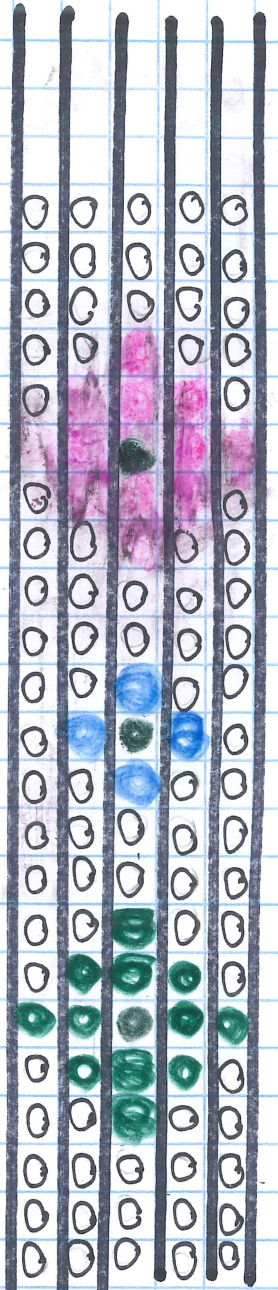
### Grab Bag Donations Needed

Speaking of AGBS, we need materials to make more grab bags. Go through your stash and bring what you no longer want or need to the Oct. meeting. Can't make the meeting? You can drop donations off at Meant to Bead now through Fri. Nov. 12<sup>th</sup>. We're raising the price from \$3 to \$5 (cash or check only).

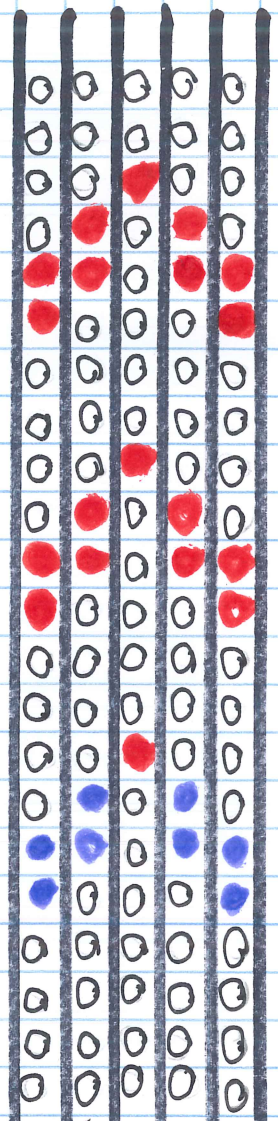
Thanks for reading and keep beading!

Pat Reichert, President  
Madison Bead Society

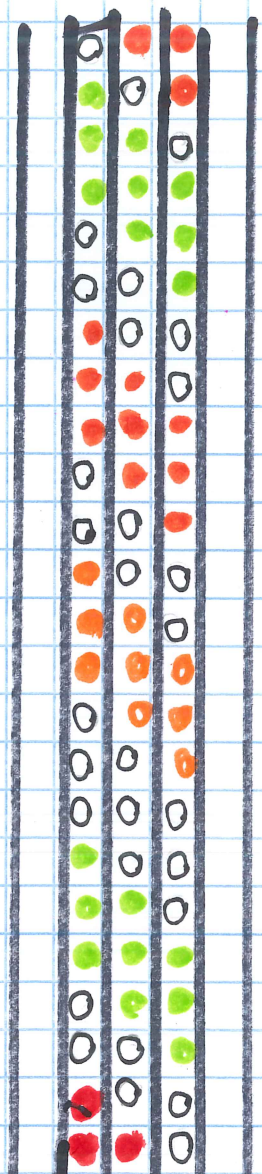
# Pearl Zippers (Pick One)



(1)



(2)



(3)

O = BACK GROUND BEADS (Black or White is nice)

} PATTERN BEADS