

#31

# Link-Belt<sup>®</sup>

## CONSTRUCTION EQUIPMENT

# HTC – 8649XXL

CRANE RATING MANUAL  
4 – SECTION POWER BOOM

# 70 Ton

© Link-Belt is a registered trademark.

## WINCH PERFORMANCE

Winch Line Pulls			Drum Rope Capacity (Ft.)	
Two Speed Winch				
Wire Rope Layer	Low Speed	High Speed	Layer	Total
	Available Lbs.*	Available Lbs.		
1	16,805	8,290	110	110
2	15,620	7,710	118	228
3	14,590	7,200	126	354
4	13,690	6,760	134	488
5	12,890	6,360	143	631
6	12,190	6,020	151	782

\*Maximum lifting capacity: Type RB Rope=12,920 Type ZB Rope=15,600

## WIRE ROPE STRENGTH

Maximum Lifting Capacities Based On Wire Rope Strength			
Parts of Line	3/4"	3/4"	Notes
	Type RB	Type ZB	
1	12,920*	15,600	Capacities shown are in pounds and working loads must not exceed the ratings on the capacity charts in the Crane Rating Manual. Study Operator's Manual for wire rope inspection procedures. *Use of swivel end with 1 part of line is not recommended.
2	25,840	31,200	
3	38,760	46,800	
4	51,680	62,400	
5	64,600	78,000	
6	77,520	93,600	
7	90,440	109,200	
8	103,360	124,800	
9	116,280	140,400	
10	129,200	156,000	

LBCE	DESCRIPTION
TYPE RB	18 X 19 Rotation Resistant – Extra Improved Plow Steel – Preformed Right Lay – Regular Lay, Swaged
TYPE ZB	36 X 7 Rotation Resistant – Extra Improved Plow Steel – Right Lay – Regular Lay

## CAPACITY DEDUCTIONS FOR AUXILIARY LOAD HANDLING EQUIPMENT

Load Handling Equipment	Weight (Lbs.)
Auxiliary Head Attached	150
70 Ton Hook Block 5 Sheave (See Hook Block For Actual Weight)	1,400
40 Ton Hook Block 4 Sheave (See Hook Block For Actual Weight)	720
8.5 Ton Hook Ball (See Hook Ball For Actual Weight)	360
<b>Lifting From Main Boom With:</b>	
24.5 Ft. Fly Tip Stowed On Boom Base	300
36.5 Ft. Offset Fly Stowed On Boom Base	900
36.5 Ft. Offset Fly Erected But Not Used	6,100
61 Ft. Offset Fly Stowed On Boom Base	1,200
61 Ft. Offset Fly Erected But Not Used	7,600
<b>Lifting From 36.5 Ft. Offset Fly With:</b>	
24.5 Ft. Fly Tip Stowed On Boom Base	300
24.5 Ft. Tip Erected But Not Used	PROHIBITED
24.5 Ft. Tip Stowed On 36.5 Ft. Offset Fly	PROHIBITED
<b>Note: Capacity deductions are for Link-Belt supplied equipment only.</b>	

## TIRE INFLATION

Tire Size	Operation	Tire Pressure (PSI)
12 R 22.5	1 mph	120
	Stationary	120

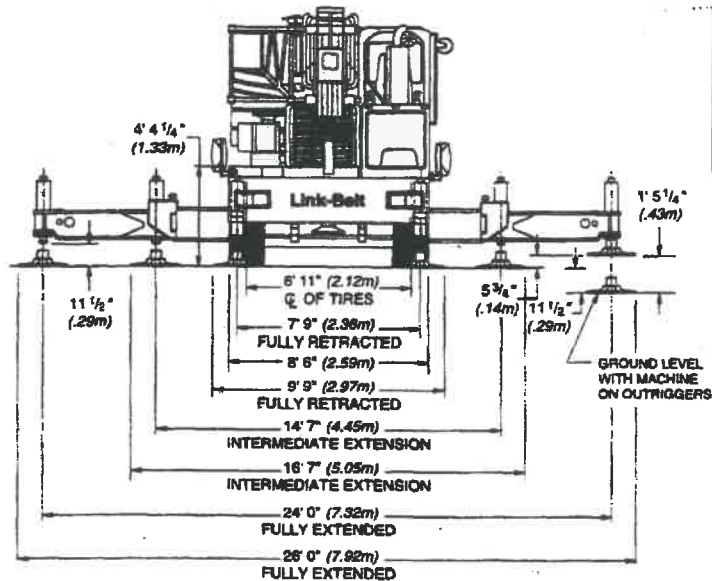
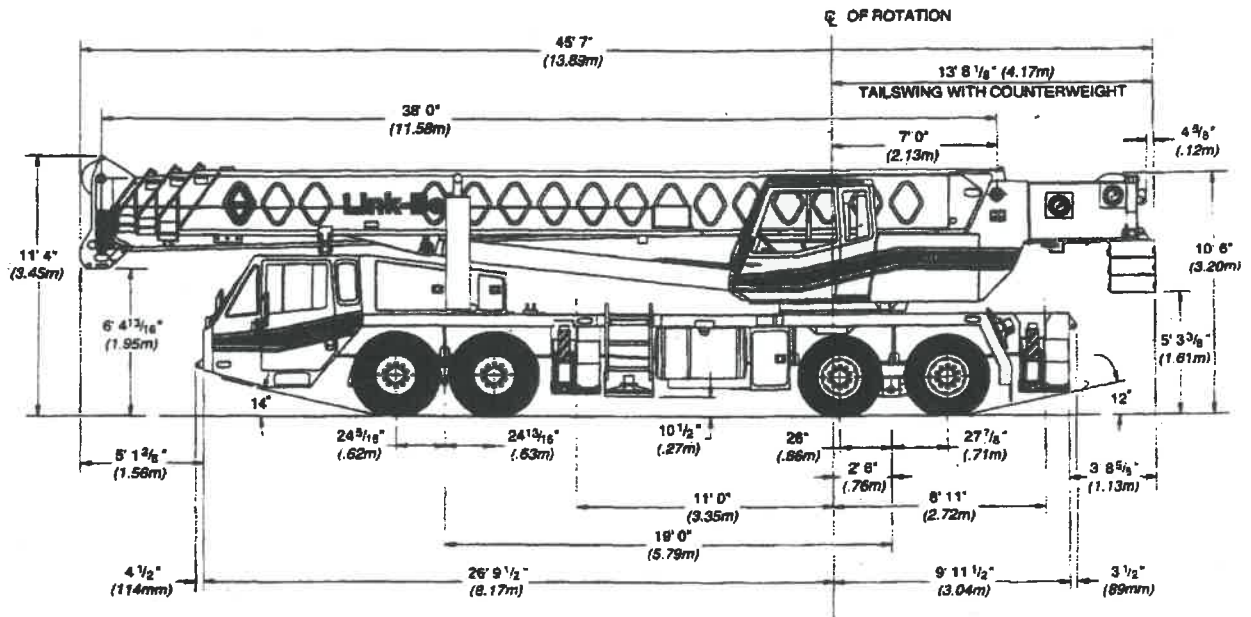
## PONTOON LOADINGS

Maximum Pontoon Load:	Maximum Pontoon Ground Bearing Pressure:
97,400 Lbs.	215 PSI

## OUTRIGGER SPREAD

Position	Distance
Fully Retracted	93" - (7'-9")
Intermediate Extended	175" - (14'-7")
Fully Extended	288" - (24'-0")

# Operator's Manual



General Dimensions	feet	meters
Turning radius (tire to tire)	51' 0"	15.54
Turning radius (curb to curb)	51' 9"	15.77
Turning radius (wall to wall)	55' 6"	16.92
Ground Clearance	10-5/16"	.26
Tailswing	13' 9"	4.19

Dimensions based on crane equipped with standard tires and aluminum pontoons.

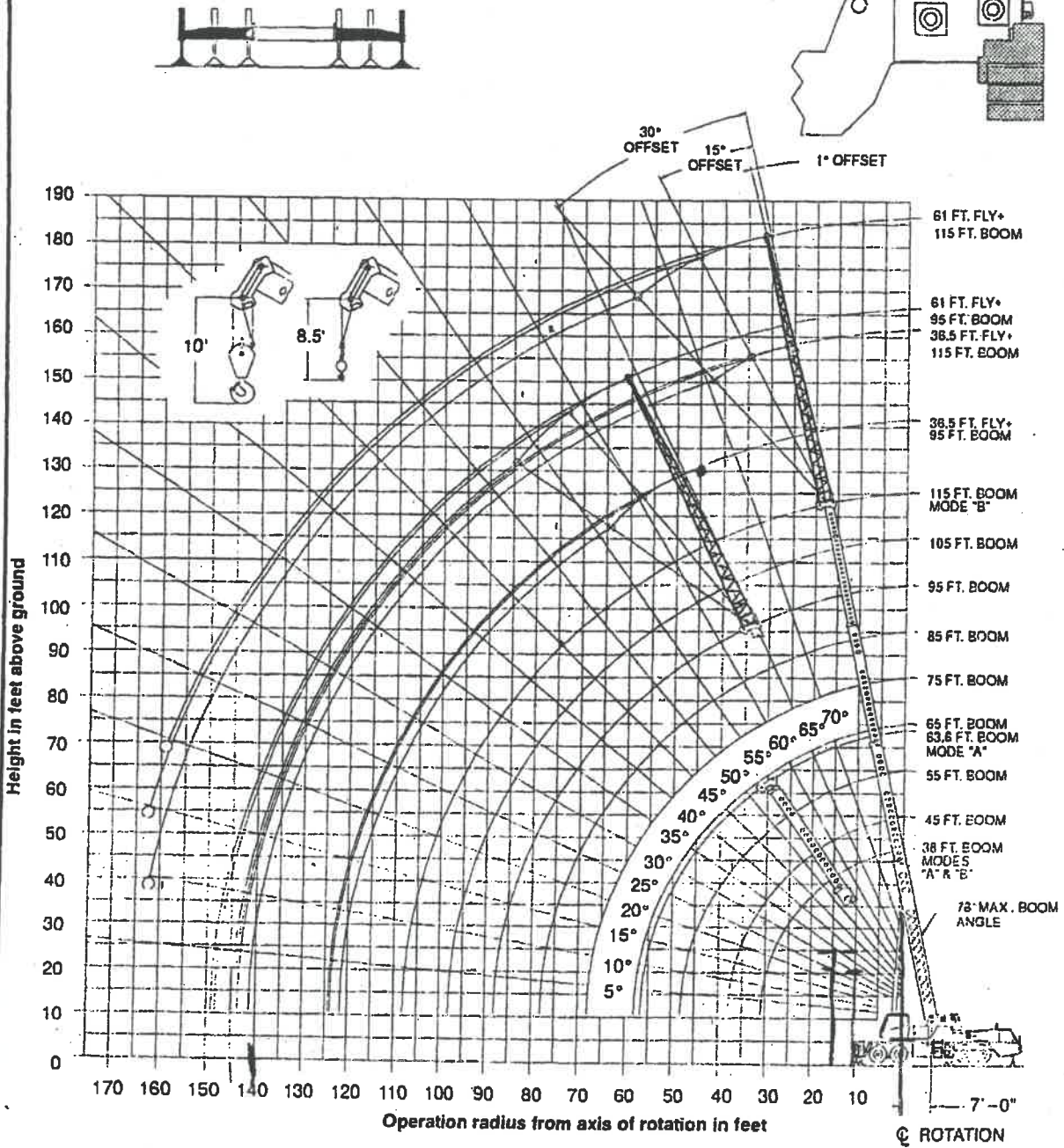
Not To Scale

**Figure 5-26**  
**Overall Dimensions**

# WORKING RANGE DIAGRAM

Working Range Diagram  
On Fully Extended Outriggers

16,000# Counterweight



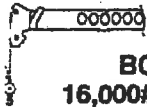
○ Denotes Main Boom + 61' Fly—Boom Mode "B"

**Note:** Boom and fly geometry shown are for unloaded condition and crane standing level on firm supporting surface. Boom deflection, subsequent radius and boom angle change must be accounted for when applying load to hook.

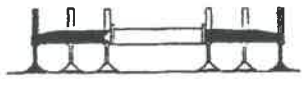


## WARNING

Do Not Lower The Boom Below The Minimum Boom Angle For No Load As Shown In The Lift Charts For The Boom Lengths Given. Loss Of Stability Will Occur Causing A Tipping Condition.



**Maximum Allowable Lifting Capacities  
Rated Lifting Capacities In Pounds  
On Fully Extended Outriggers  
See Set Up Note 2.**

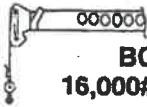


38 Ft. To 45 Ft. Main Boom							
Load Radius In Feet	38 Ft.			45 Ft.			Load Radius In Feet
	Loaded Boom Angle (Deg.)	360°	Over Rear	Loaded Boom Angle (Deg.)	360°	Over Rear	
9	69.0	98,000	98,000				9
10	67.0	98,000	98,000	71.0	87,400	87,400	10
12	64.0	98,000	98,000	68.5	87,400	87,400	12
15	58.5	98,000	98,000	64.0	87,400	87,400	15
20	48.5	76,600	76,600	56.5	76,000	76,000	20
25	36.5	59,400	59,400	48.0	58,900	58,900	25
30	17.5	45,600	45,600	38.0	45,100	45,100	30
35				24.5	34,600	34,600	35
Min. Boom Angle/Cap.	0°	26,300	26,300	0°	21,100	21,100	Min. Boom Angle/Cap.

**Note: Refer To Page 8 For "Lifting Capacity Deductions" For Capacity Reductions Caused By Stowed Or Erected Auxiliary Load Handling Equipment.**

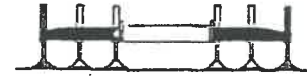
Load Radius In Feet		55 Ft.			63.6 Ft.			Load Radius In Feet
		Loaded Boom Angle (Deg.)	360°	Over Rear	Loaded Boom Angle (Deg.)	360°	Over Rear	
10	75.0	85,600	85,600	75.5	56,300	56,300	10	
12	73.0	85,600	85,600	73.0	56,300	56,300	12	
15	69.5	85,600	85,600	68.0	53,000	53,000	15	
20	64.0	75,300	75,300	63.0	44,900	44,900	20	
25	57.5	58,300	58,300	57.5	38,700	38,700	25	
30	51.0	44,400	44,400	51.5	33,700	33,700	30	
35	43.0	34,100	34,100	45.5	26,700	26,700	35	
40	34.5	27,000	27,000	38.0	21,600	21,600	40	
45	22.0	21,900	21,900	29.0	17,800	17,800	45	
50				16.0	14,700	14,700	50	
55							55	
Min. Boom Angle/Cap.	0°	14,800	14,800	0°	11,000	11,000	Min. Boom Angle/Cap.	

**Note:** Refer To Page 8 For "Lifting Capacity Deductions" For Capacity Reductions Caused By Stowed Or Erected Auxiliary Load Handling Equipment.



**BOOM MODE "B"**  
**16,000# COUNTERWEIGHT**

**Maximum Allowable Lifting Capacities**  
**Rated Lifting Capacities In Pounds**  
**On Fully Extended Outriggers**  
**See Set Up Note 2.**



**38 Ft. To 55 Ft. Main Boom**

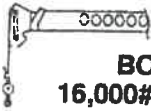
Load Radius In Feet	38 Ft.			45 Ft.			55 Ft.			Load Radius In Feet
	Loaded Boom Angle (Deg.)	360°	Over Rear	Loaded Boom Angle (Deg.)	360°	Over Rear	Loaded Boom Angle (Deg.)	360°	Over Rear	
9	69.0	98,000	98,000							9
10	67.0	98,000	98,000	71.0	42,000	42,000	74.5	42,000	42,000	10
12	64.0	98,000	98,000	68.0	42,000	42,000	72.5	42,000	42,000	12
15	58.5	98,000	98,000	64.0	42,000	42,000	69.0	42,000	42,000	15
20	48.5	76,600	76,600	56.5	42,000	42,000	63.5	42,000	42,000	20
25	36.5	59,400	59,400	48.0	42,000	42,000	57.5	42,000	42,000	25
30	17.5	45,600	45,600	38.0	42,000	42,000	50.5	42,000	42,000	30
35				24.5	35,700	35,700	43.0	36,300	36,300	35
40							34.0	29,100	29,100	40
45 <sup>1</sup>							22.0	23,900	23,900	45
Min. Boom Angle/ Cap.	0°	26,300	26,300	0°	20,100	20,100	0°	14,400	14,400	Min. Boom Angle/ Cap.

**65 Ft. To 85 Ft. Main Boom**

Load Radius In Feet	65 Ft.			75 Ft.			85 Ft.			Load Radius In Feet
	Loaded Boom Angle (Deg.)	360°	Over Rear	Loaded Boom Angle (Deg.)	360°	Over Rear	Loaded Boom Angle (Deg.)	360°	Over Rear	
12	75.5	42,000	42,000							12
15	73.0	42,000	42,000	75.5	42,000	42,000	77.5	42,000	42,000	15
20	68.0	42,000	42,000	71.5	42,000	42,000	74.5	42,000	42,000	20
25	63.5	42,000	42,000	68.0	42,000	42,000	71.0	41,800	41,800	25
30	58.0	42,000	42,000	63.5	42,000	42,000	67.0	36,900	36,900	30
35	52.5	36,600	36,600	59.0	36,800	36,800	63.5	32,900	32,900	35
40	46.5	29,400	29,400	54.0	29,600	29,600	59.5	29,700	29,700	40
45	39.5	24,300	24,300	49.0	24,500	24,500	55.0	24,600	24,600	45
50	31.5	20,300	20,300	43.0	20,600	20,600	50.5	20,700	20,700	50
55	20.0	17,200	17,200	37.0	17,500	17,500	46.0	17,600	17,600	55
60				29.5	15,000	15,000	40.5	15,100	15,100	60
65				19.0	12,900	12,900	34.5	13,100	13,100	65
70							27.5	11,400	11,400	70
75							18.0	10,000	10,000	75
Min. Boom Angle/ Cap.	0°	10,700	10,700	0°	8,100	8,100	0°	6,100	6,100	Min. Boom Angle/ Cap.

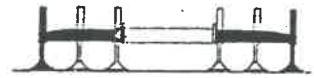
**Note: Refer To Page 8 For "Lifting Capacity Deductions" For Capacity Reductions Caused By Stowed Or Erected Auxiliary Load Handling Equipment.**





**BOOM MODE "B"**  
**16,000# COUNTERWEIGHT**

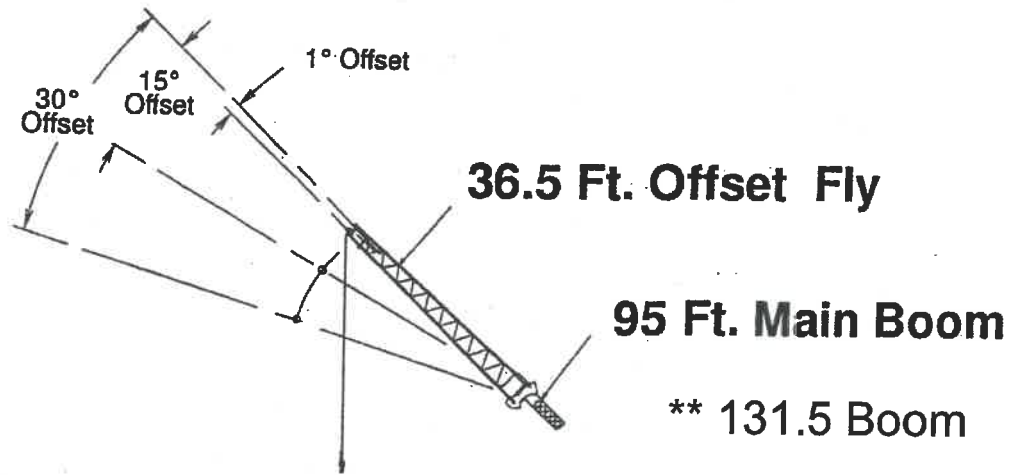
**Maximum Allowable Lifting Capacities**  
**Rated Lifting Capacities In Pounds**  
**On Fully Extended Outriggers**  
**See Set Up Note 2.**



95 Ft. To 115 Ft. Main Boom

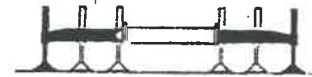
Load Radius In Feet	95 Ft.			105 Ft.			115 Ft.			Load Radius In Feet
	Loaded Boom Angle (Deg.)	360°	Over Rear	Loaded Boom Angle (Deg.)	360°	Over Rear	Loaded Boom Angle (Deg.)	360°	Over Rear	
20	76.5	38,600	38,600							20
25	73.5	33,800	33,800	75.5	30,300	30,300	77.0	24,500	24,500	25
30	70.0	29,800	29,800	72.5	27,000	27,000	74.5	24,500	24,500	30
35	67.0	26,600	26,600	69.5	24,100	24,100	72.0	22,200	22,200	35
40	63.5	23,900	23,900	66.5	21,700	21,700	69.5	20,000	20,000	40
45	60.0	21,700	21,700	63.5	19,600	19,600	66.5	18,100	18,100	45
50	56.0	19,800	19,800	60.5	17,900	17,900	63.5	16,300	16,300	50
55	52.5	17,700	17,700	57.0	16,200	16,200	61.0	14,900	14,900	55
60	48.0	15,200	15,200	53.5	14,900	14,900	58.0	13,600	13,600	60
65	43.5	13,200	13,200	50.0	13,300	13,300	54.5	12,500	12,500	65
70	38.5	11,600	11,600	46.0	11,600	11,600	51.5	11,600	11,600	70
75	33.0	10,100	10,100	41.5	10,200	10,200	48.0	10,300	10,300	75
80	26.5	8,800	8,900	37.0	8,900	8,900	44.0	9,000	9,000	80
85	17.0	7,700	7,800	31.5	7,800	7,900	40.0	7,800	7,900	85
90				25.5	6,800	6,900	35.5	6,900	7,000	90
95				16.5	5,900	6,100	30.5	6,000	6,100	95
100							24.5	5,200	5,400	100
105							16.0	4,600	4,700	105
Min. Boom Angle/ Cap.	0°	4,700	4,700	0°	3,500	3,500	0°	2,500	2,500	Min. Boom Angle/ Cap.

**Note: Refer To Page 8 For "Lifting Capacity Deductions" For Capacity Reductions Caused By Stowed Or Erected Auxiliary Load Handling Equipment.**



**BOOM MODE "B"**  
**16,000# COUNTERWEIGHT**

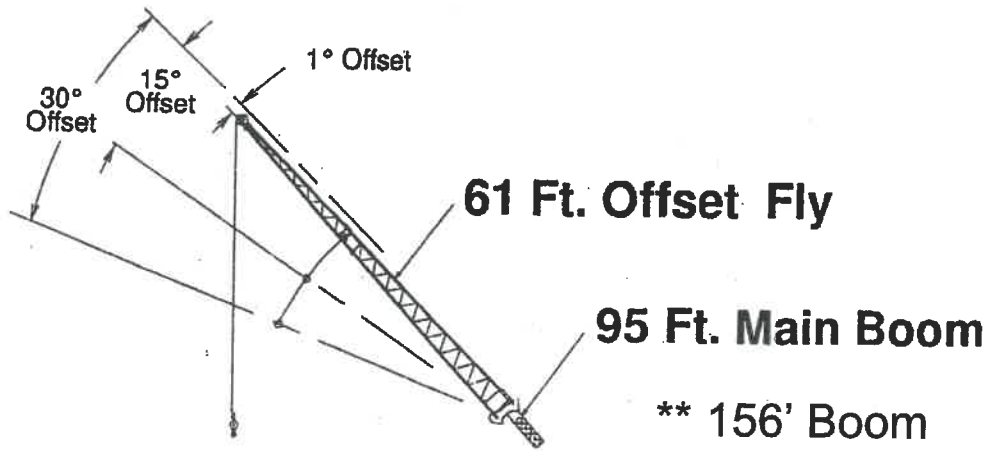
**Maximum Allowable Lifting Capacities**  
**Rated Lifting Capacities In Pounds**  
**On Fully Extended Outriggers**  
**See Set Up Note 2.**




95 Ft. Main Boom + 36.5 Ft. Offset Fly

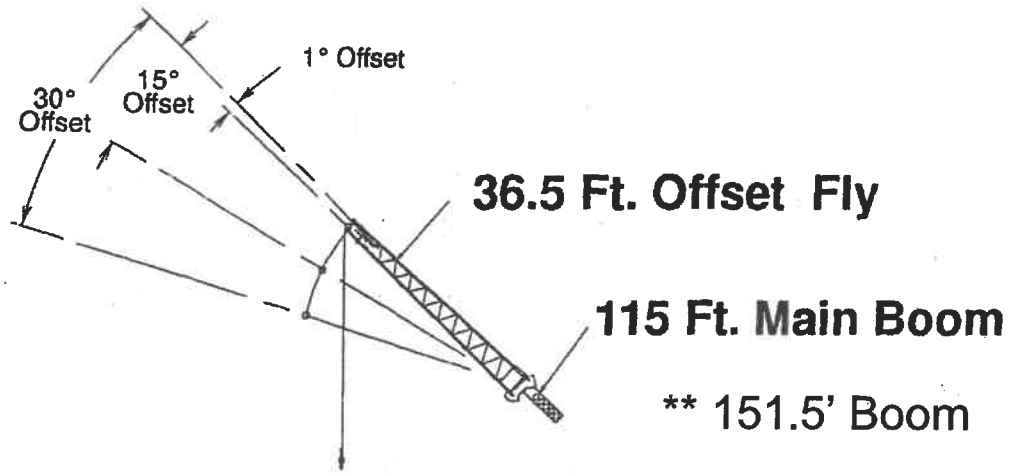
Load Radius In Feet	1° Offset		15° Offset		30° Offset		Load Radius In Feet
	Loaded Boom Angle (Deg.)	360°	Loaded Boom Angle (Deg.)	360°	Loaded Boom Angle (Deg.)	360°	
30	76.5	16,900					30
35	74.0	15,700	77.5	11,900			35
40	72.0	14,600	75.5	11,300			40
45	70.0	13,700	73.5	10,700	77.0	8,700	45
50	67.5	12,800	71.0	10,300	74.5	8,300	50
55	65.0	12,100	68.5	9,800	72.0	8,000	55
60	62.5	11,400	66.0	9,400	69.5	7,700	60
65	60.0	10,800	63.5	8,900	67.0	7,400	65
70	57.5	10,300	61.0	8,500	64.5	7,200	70
75	55.0	9,800	58.5	8,100	61.5	6,900	75
80	52.0	9,300	55.5	7,800	58.5	6,700	80
85	49.0	8,800	52.5	7,400	55.5	6,600	85
90	46.0	8,100	49.5	7,200	52.5	6,400	90
95	42.5	7,200	46.0	6,900	49.0	6,300	95
100	39.0	6,500	42.5	6,700	45.0	6,000	100
105	35.0	5,800	38.5	6,000	41.0	6,000	105
110	30.5	5,100	34.0	5,400	36.0	5,500	110
115	25.0	4,600	28.5	4,800	30.0	4,800	115
120	18.5	4,100	21.5	4,200			120
Min. Boom Angle/Cap.	0°	1,700	0°	1,700	0°	1,800	Min. Boom Angle/Cap.

**Note:** Refer To Page 8 For "Lifting Capacity Deductions" For Capacity Reductions Caused By Stowed Or Erected Auxillary Load Handling Equipment.



BOOM MODE "B" 16,000# COUNTERWEIGHT		Maximum Allowable Lifting Capacities Rated Lifting Capacities In Pounds On Fully Extended Outriggers See Set Up Note 2.						
95 Ft. Main Boom + 61 Ft. Offset Fly								
Load Radius In Feet	1° Offset		15° Offset		30° Offset		Load Radius In Feet	
	Loaded Boom Angle (Deg.)	360°	Loaded Boom Angle (Deg.)	360°	Loaded Boom Angle (Deg.)	360°		
35	77.5	9,500					35	
40	75.5	9,500					40	
45	74.0	9,000					45	
50	72.0	8,400	77.0	6,200			50	
55	70.0	7,800	75.5	5,900			55	
60	68.0	7,300	73.5	5,600			60	
65	66.0	6,800	71.5	5,300	76.5	4,300	65	
70	64.0	6,300	69.5	5,000	74.5	4,100	70	
75	62.0	6,000	67.0	4,800	72.0	4,000	75	
80	60.0	5,600	65.0	4,600	70.0	3,800	80	
85	58.0	5,300	63.0	4,400	68.0	3,700	85	
90	55.5	5,000	60.5	4,200	65.5	3,600	90	
95	53.5	4,800	58.5	4,000	63.0	3,500	95	
100	51.0	4,500	56.0	3,900	60.5	3,400	100	
105	48.5	4,300	53.5	3,700	58.0	3,300	105	
110	45.5	4,100	50.5	3,600	55.0	3,200	110	
115	43.0	3,900	48.0	3,500	52.0	3,100	115	
120	40.0	3,700	45.0	3,300	49.0	3,100	120	
125	36.5	3,600	41.5	3,200	45.5	3,000	125	
130	33.0	3,400	38.0	3,200	41.5	3,000	130	
135	29.0	3,300	34.0	3,100	37.0	3,000	135	
140	24.5	3,000	29.0	3,000	31.0	3,000	140	
145	18.0	2,700	22.0	2,800			145	
Min. Boom Angle/Cap.	0°	700	0°	700	0°	800	Min. Boom Angle/Cap.	

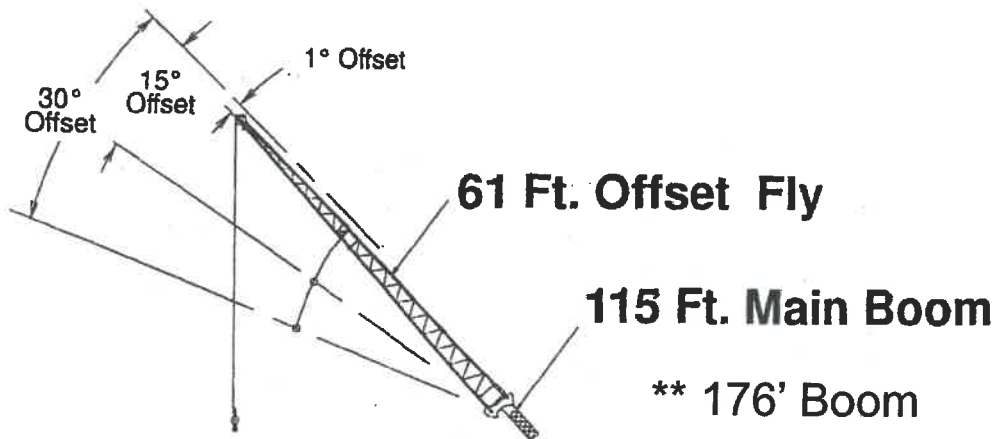
Note: Refer To Page 8 For "Lifting Capacity Deductions" For Capacity Reductions Caused By Stowed Or Erected Auxiliary Load Handling Equipment.




<b>BOOM MODE "B"</b>		<b>Maximum Allowable Lifting Capacities Rated Lifting Capacities In Pounds On Fully Extended Outriggers See Set Up Note 2.</b>						
<b>16,000# COUNTERWEIGHT</b>		<b>115 Ft. Main Boom + 36.5 Ft. Offset Fly</b>						
Load Radius In Feet	1° Offset		15° Offset		30° Offset		Load Radius In Feet	
	Loaded Boom Angle (Deg.)	360°	Loaded Boom Angle (Deg.)	360°	Loaded Boom Angle (Deg.)	360°		
35	76.5	10,500					35	
40	75.0	10,500					40	
45	73.0	10,500	76.5	10,100			45	
50	71.5	10,500	75.0	10,100	78.0*	8,700	50	
55	69.5	10,500	73.0	10,100	76.0	8,400	55	
60	67.5	10,500	71.0	10,100	74.0	8,100	60	
65	66.0	10,300	69.0	9,700	71.5	7,800	65	
70	63.5	9,500	67.0	9,300	69.5	7,600	70	
75	61.5	8,700	65.0	8,900	67.5	7,400	75	
80	59.0	8,100	62.5	8,200	65.0	7,100	80	
85	57.0	7,400	60.0	7,600	63.0	7,000	85	
90	54.5	6,900	57.5	7,000	60.5	6,800	90	
95	52.0	6,400	55.0	6,500	58.0	6,600	95	
100	49.0	5,900	52.5	6,000	55.5	6,100	100	
105	46.5	5,500	49.5	5,600	52.5	5,700	105	
110	43.5	4,900	47.0	5,200	49.5	5,200	110	
115	40.5	4,300	43.5	4,600	46.0	4,800	115	
120	37.0	3,800	40.0	4,100	42.5	4,200	120	
125	33.0	3,300	36.5	3,600	38.5	3,700	125	
130	29.0	2,900	32.0	3,100	33.5	3,200	130	
135	24.0	2,500	27.0	2,700	28.0	2,700	135	
140	17.5	2,200	20.5	2,300			140	
Min. Boom Angle/Cap.	0°	400	0°	500	0°	500	Min. Boom Angle/Cap.	

**Note:** Refer To Page 8 For "Lifting Capacity Deductions" For Capacity Reductions Caused By Stowed Or Erected Auxiliary Load Handling Equipment.

\* This capacity based on maximum obtainable boom angle.



BOOM MODE "B" 16,000# COUNTERWEIGHT		Maximum Allowable Lifting Capacities Rated Lifting Capacities in Pounds On Fully Extended Outriggers See Set Up Note 2.						
115 Ft. Main Boom + 61 Ft. Offset Fly								
Load Radius In Feet	1° Offset		15° Offset		30° Offset		Load Radius In Feet	
	Loaded Boom Angle (Deg.)	360°	Loaded Boom Angle (Deg.)	360°	Loaded Boom Angle (Deg.)	360°		
40	77.5	7,100					40	
45	76.0	7,100					45	
50	74.5	7,100					50	
55	73.0	7,100					55	
60	71.5	7,100	76.5	6,000			60	
65	70.0	7,100	75.0	5,700			65	
70	68.5	7,100	73.0	5,400	77.5	4,300	70	
75	67.0	6,700	71.5	5,200	76.0	4,200	75	
80	65.5	6,300	69.5	4,900	74.0	4,000	80	
85	63.5	6,000	68.0	4,700	72.0	3,900	85	
90	62.0	5,700	66.0	4,500	70.5	3,800	90	
95	60.0	5,400	64.0	4,400	68.5	3,700	95	
100	58.0	5,100	62.5	4,200	66.5	3,600	100	
105	56.0	4,800	60.5	4,100	64.5	3,500	105	
110	53.5	4,400	58.0	3,900	62.0	3,400	110	
115	51.5	4,100	56.0	3,800	60.0	3,300	115	
120	49.0	3,700	54.0	3,700	57.5	3,200	120	
125	46.5	3,400	51.5	3,500	55.5	3,200	125	
130	44.0	3,100	49.0	3,200	52.5	3,100	130	
135	41.5	2,900	46.0	2,900	50.0	3,000	135	
140	38.5	2,600	43.0	2,700	46.5	2,700	140	
145	35.5	2,300	40.0	2,400	43.0	2,400	145	
150	32.0	2,000	36.5	2,200	39.5	2,100	150	
155	28.0	1,700	32.5	1,900	34.5	1,800	155	
160	23.5	1,400	28.0	1,600	28.5	1,600	160	

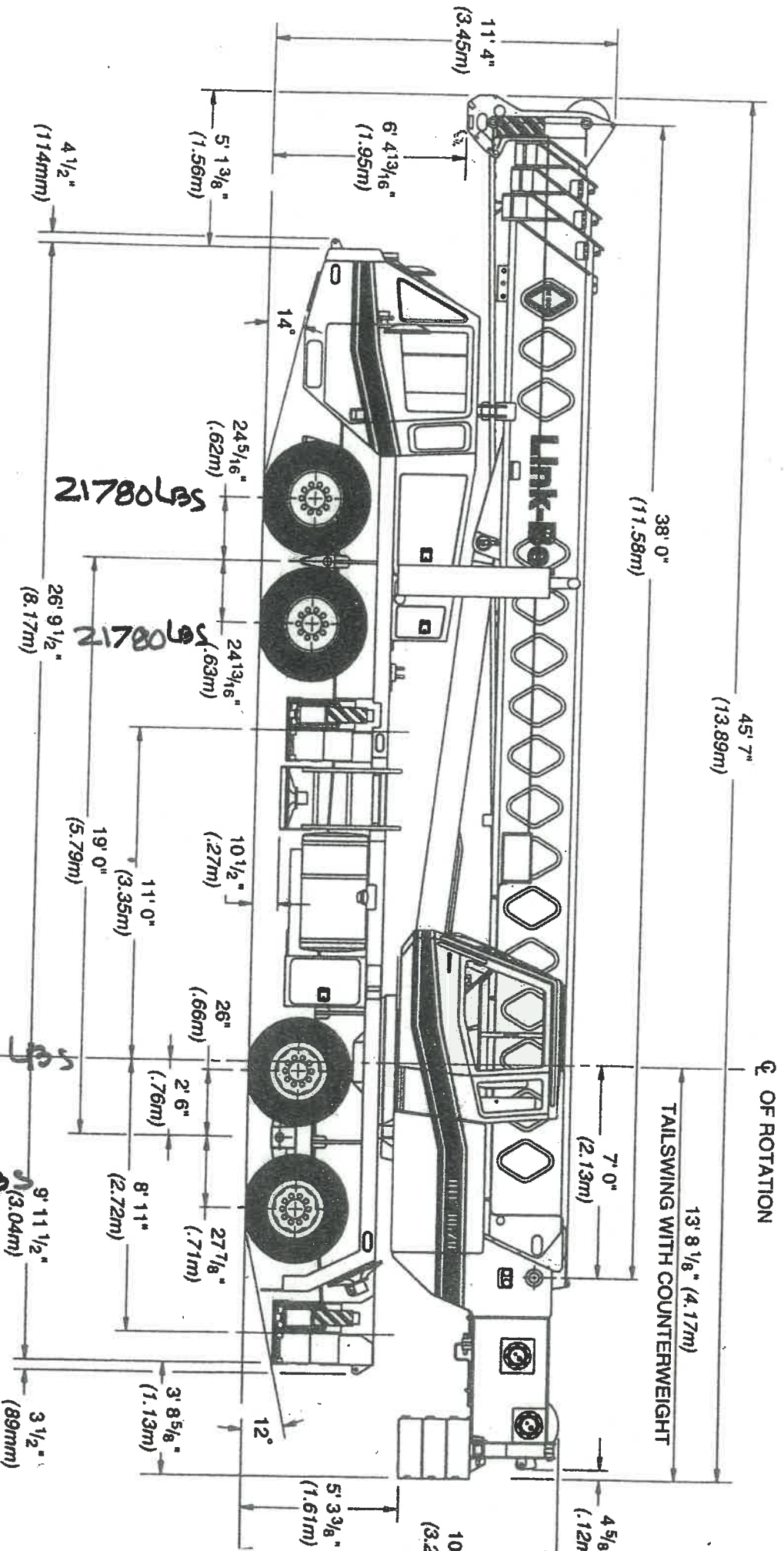
**⚠ WARNING**

Do Not Lower 61 Ft. Offset Fly In Working Position Below 20 Degrees Unless Main Boom Length Is 108 Ft. Or Less, Since Loss Of Stability Will Occur Causing A Tipping Condition.

Note: Refer To Page 8 For "Lifting Capacity Deductions" For Capacity Reductions Caused By Stowed Or Erected Auxiliary Load Handling Equipment.

# TC-8670

70-ton (63.5 metric ton)



**WEIGHTS INCLUDE 1600LBS COUNTERWEIGHTS (800LBS ON EACH - 800LBS INSTALLED)**

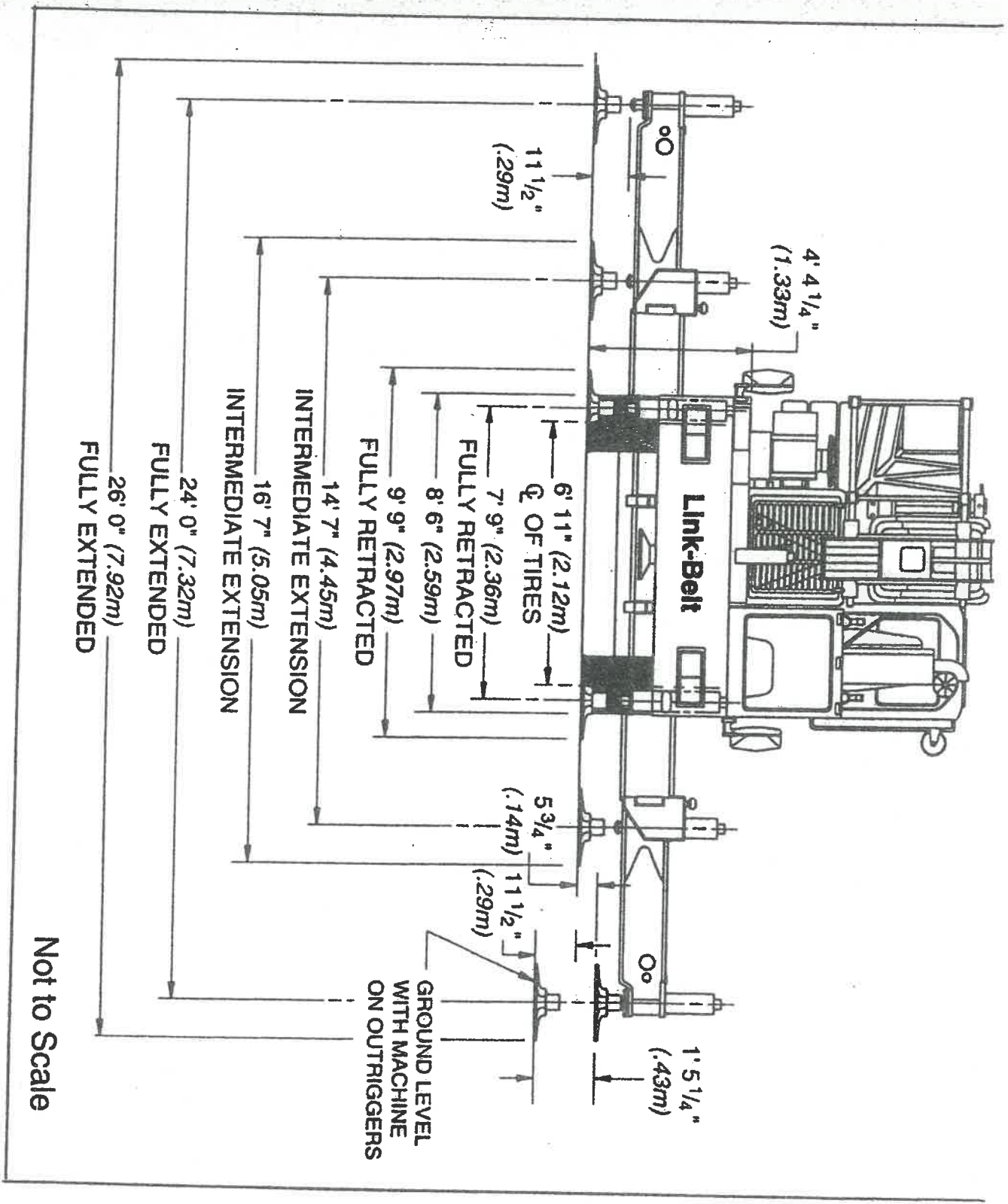


## General Dimensions

Turning radius (cantarina to cantarina) of 11' 0"

feet

Not 1

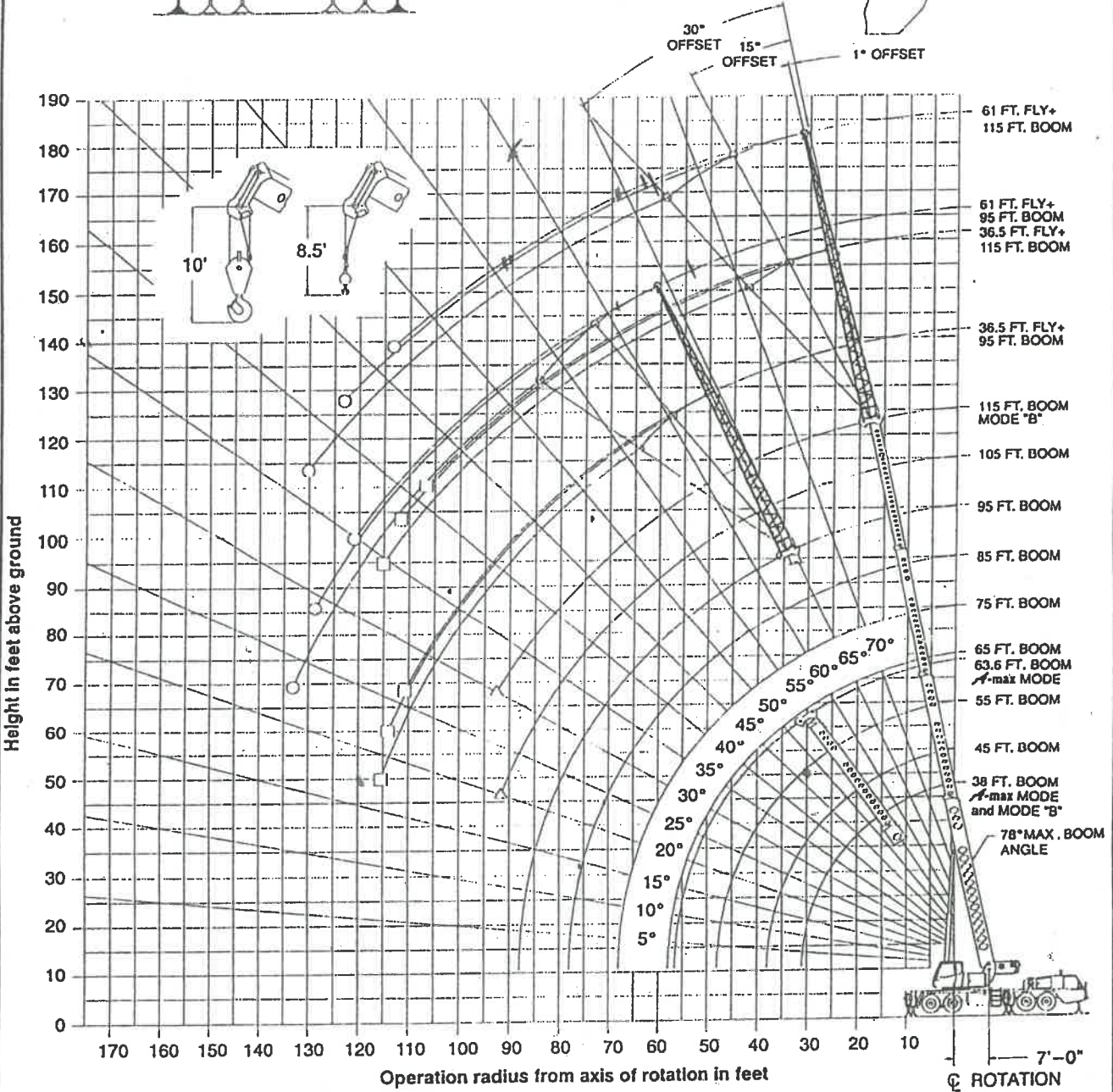
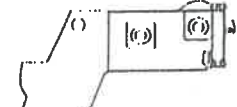


General Dimen
Turning radius (ce
Turning radius (cu
Turning radius (we
Ground clearance
Tailswing

# WORKING RANGE DIAGRAM

Working Range Diagram  
On Fully Extended Outriggers

0# Counterweight



- Denotes Main Boom + 61' Fly-Boom Mode "B"
- Denotes Main Boom + 36.5' Fly-Boom Mode "B"
- △ Denotes Main Boom-Boom Mode "B"

Note: Boom and fly geometry shown are for unloaded condition and crane standing level on firm supporting surface. Boom deflection, subsequent radius and boom angle change must be accounted for when applying load to hook.

## ! WARNING

Do Not Lower The Boom Below The Minimum Boom Angle For No Load As Shown In The Lift Charts For The Boom Lengths Given. Loss Of Stability Will Occur Causing A Tipping Condition.



# Extended Outriggers - Main Boom Capacities - 0 lb. Counterweight

Maximum Allowable Lifting Capacities Rated Lifting Capacities in Pounds On Fully Extended Outriggers See Set Up Note 2.							
38 Ft. To 45 Ft. Main Boom							
Load Radius in Feet	38 Ft.			45 Ft.			Load Radius in Feet
	Loaded Boom Angle (Deg.)	360°	Over Rear	Loaded Boom Angle (Deg.)	360°	Over Rear	
10				71.0	87,400	87,400	10
12				68.5	87,400	87,400	12
15	58.5	92,000	92,000	64.0	87,400	87,400	15
20	48.5	68,900	66,900	56.5	66,200	66,200	20
25	36.5	44,500	44,500	48.0	43,800	43,800	25
30	17.5	31,700	31,700	38.0	31,200	31,200	30
35				24.5	23,000	23,400	35
Min. Boom Angle/Cap.	0°	26,300	26,300	0°	19,100	19,900	Min. Boom Angle/Cap.

Maximum Allowable Lifting Capacities Rated Lifting Capacities in Pounds On Fully Extended Outriggers See Set Up Note 2.							
55 Ft. To 63.6 Ft. Main Boom							
Load Radius in Feet	55 Ft.			63.6 Ft.			Load Radius in Feet
	Loaded Boom Angle (Deg.)	360°	Over Rear	Loaded Boom Angle (Deg.)	360°	Over Rear	
10	75.0	85,600	85,600				10
12	73.0	85,600	85,600	75.5	56,300	56,300	12
15	69.5	85,600	85,600	73.0	56,300	56,300	15
20	63.5	65,500	66,500	68.0	53,000	53,000	20
25	57.5	43,100	43,100	63.0	42,600	42,600	25
30	50.5	30,600	30,600	57.5	30,200	30,200	30
35	43.0	22,400	22,900	51.5	22,000	22,500	35
40	34.0	16,700	17,600	45.0	16,300	17,300	40
45	22.0	12,700	13,800	38.0	12,400	13,500	45
50				29.0	9,500	10,700	50
55				15.5	7,200	8,400	55
Min. Boom Angle/Cap.	0°	10,700	11,900	0°	6,500	7,700	Min. Boom Angle/Cap.

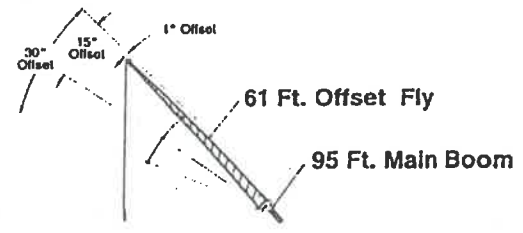
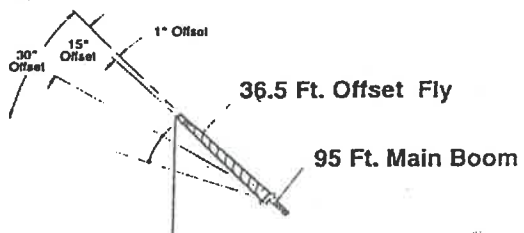
Maximum Allowable Lifting Capacities Rated Lifting Capacities in Pounds On Fully Extended Outriggers See Set Up Note 2.										
BOOM MODE "B" 04 COUNTERWEIGHT										
Load Radius in Feet	30 Ft.			48 Ft.			60 Ft.			Load Radius in Feet
	Loaded Boom Angle (Deg.)	360°	Over Rear	Loaded Boom Angle (Deg.)	360°	Over Rear	Loaded Boom Angle (Deg.)	360°	Over Rear	
10				71.0	42,000	42,000	74.5	42,000	42,000	10
12				68.0	42,000	42,000	72.5	42,000	42,000	12
15	58.5	92,000	92,000	64.0	42,000	42,000	69.0	42,000	42,000	15
20	48.5	68,900	66,900	56.5	42,000	42,000	63.5	42,000	42,000	20
25	36.5	44,500	44,500	48.0	42,000	42,000	57.5	42,000	42,000	25
30	17.5	31,700	31,700	38.0	32,400	32,400	50.5	33,000	33,000	30
35				24.5	24,200	24,500	43.0	24,900	25,100	35
40							34.0	19,000	19,700	40
45							22.0	14,900	15,800	45
Min. Boom Angle/Cap.	0°	26,300	26,300	0°	20,100	20,100	0°	12,900	13,900	Min. Boom Angle/Cap.

Maximum Allowable Lifting Capacities Rated Lifting Capacities in Pounds On Fully Extended Outriggers See Set Up Note 2.										
BOOM MODE "B" 04 COUNTERWEIGHT										
Load Radius in Feet	95 Ft.			106 Ft.			116 Ft.			Load Radius in Feet
	Loaded Boom Angle (Deg.)	360°	Over Rear	Loaded Boom Angle (Deg.)	360°	Over Rear	Loaded Boom Angle (Deg.)	360°	Over Rear	
20	76.5	38,800	38,800							20
25	73.5	33,800	33,800	75.5	30,300	30,300	77.0	24,500	24,500	25
30	70.0	29,900	29,800	72.5	27,000	27,000	74.5	24,500	24,500	30
35	66.5	25,800	25,800	69.5	24,100	24,100	72.0	22,200	22,200	35
40	63.0	19,900	20,500	66.5	20,000	20,600	69.5	20,000	20,000	40
45	59.5	15,800	16,600	63.0	15,900	16,700	66.5	15,900	16,800	45
50	55.5	12,700	13,700	60.0	12,800	13,700	63.5	12,900	13,800	50
55	51.5	10,400	11,400	56.5	10,500	11,500	60.5	10,600	11,600	55
60	47.5	8,600	9,000	53.0	8,700	9,700	57.0	8,700	8,700	60
65	43.0	7,100	8,000	49.0	7,100	8,100	54.0	7,200	8,200	65
70	38.0	5,800	6,800	45.5	5,900	6,800	50.5	6,000	6,900	70
75	32.5	4,700	5,700	41.0	4,800	5,800	47.0	4,900	5,800	75
80	26.0	3,800	4,700	36.5	3,900	4,800	43.5	4,000	4,900	80
85	16.5	3,000	3,900	31.0	3,100	4,000	38.5	3,200	4,100	85
90				25.0	2,500	3,300	35.0	2,500	3,400	90
Min. Boom Angle/Cap.	0°	2,000	3,500	20°			30°			Min. Boom Angle/Cap.

Maximum Allowable Lifting Capacities Rated Lifting Capacities in Pounds On Fully Extended Outriggers See Set Up Note 2.										
85 Ft. To 85 Ft. Main Boom										
Load Radius in Feet	85 Ft.			75 Ft.			65 Ft.			Load Radius in Feet
	Loaded Boom Angle (Deg.)	360°	Over Rear	Loaded Boom Angle (Deg.)	360°	Over Rear	Loaded Boom Angle (Deg.)	360°	Over Rear	
12	75.5	42,000	42,000							12
15	73.0	42,000	42,000	75.5	42,000	42,000	77.5	42,000	42,000	15
20	68.0	42,000	42,000	71.5	42,000	42,000	74.5	42,000	42,000	20
25	63.0	42,000	42,000	67.5	42,000	42,000	71.0	41,800	41,800	25
30	58.0	33,300	33,300	63.0	33,500	33,500	67.0	33,700	33,700	30
35	52.5	25,300	25,400	58.5	25,500	25,600	63.0	25,800	25,700	35
40	46.0	19,400	20,000	53.5	19,800	20,300	59.0	19,800	20,400	40
45	39.5	15,300	16,100	48.5	15,500	16,400	54.5	15,700	16,500	45
50	31.0	12,200	13,200	43.0	12,500	13,400	50.5	12,700	13,600	50
55	20.0	9,900	10,900	36.5	10,100	11,200	45.5	10,300	11,300	55
60				29.0	8,300	9,300	40.5	8,400	9,500	60
65				18.5	6,700	7,700	34.5	6,900	7,900	65
70							27.5	5,700	6,600	70
75							17.5	4,600	5,500	75
Min. Boom Angle/Cap.	0°	0,700	0,700	0°	5,900	6,800	0°	4,000	4,900	Min. Boom Angle/Cap.

NOTE: Refer To Page 5 For "Lifting Capacity Deductions" For Capacity Reductions Caused By Stowed Or Erected Auxillary Load Handling Equipment.

Fully Extended Outriggers - Fly Capacities - Boom Mode "B" - 0 lb. Counterweight



**BOOM MODE "B" OF COUNTERWEIGHT**

Maximum Allowable Lifting Capacities Rated Lifting Capacities in Pounds On Fully Extended Outriggers See Set Up Note 2.

95 Ft. Main Boom + 36.5 Ft. Offset Fly

Load Radius in Feet	1° Offset		15° Offset		30° Offset		Load Radius in Feet
	Loaded Boom Angle (Deg.)	360°	Loaded Boom Angle (Deg.)	360°	Loaded Boom Angle (Deg.)	360°	
30	76.5	16,900					30
35	74.0	15,700	77.5	11,900			35
40	72.0	14,600	75.5	11,300			40
45	70.0	13,700	73.5	10,700	77.0	8,700	45
50	67.5	12,800	71.0	10,200	74.5	8,300	50
55	65.0	12,100	68.5	9,800	72.0	8,000	55
60	62.5	10,200	66.0	9,400	69.5	7,700	60
65	59.5	8,600	63.5	8,900	67.0	7,400	65
70	57.0	7,300	61.0	8,000	64.5	7,200	70
75	54.0	6,200	58.0	6,900	61.5	6,900	75
80	51.0	5,300	55.0	5,900	58.5	6,400	80
85	48.0	4,500	52.0	5,000	55.5	5,400	85
90	45.0	3,800	48.5	4,200	52.0	4,600	90
95	41.5	3,200	45.0	3,500	48.0	3,900	95
100	38.0	2,600	41.5	2,900	44.5	3,200	100
105	34.0	2,100	37.5	2,400	40.0	2,600	105
110	29.5	1,700	33.0	1,900	35.0	2,100	110
115					29.0	1,600	115
120							120

**WARNING**  
Do Not Lower 36.5 Ft. Offset Fly in Working Position Below 27 Degrees Unless Main Boom Length is 84 Ft. Or Less, Since Loss Of Stability Will Occur Causing A Tipping Condition.

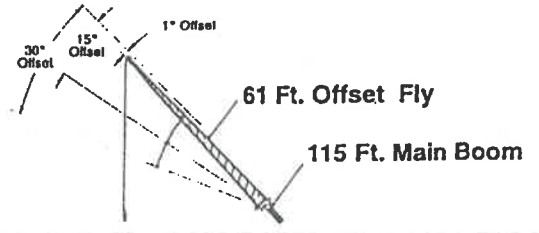
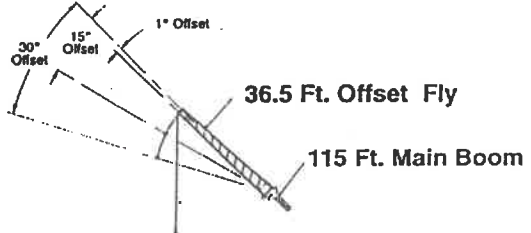
**BOOM MODE "B" OF COUNTERWEIGHT**

Maximum Allowable Lifting Capacities Rated Lifting Capacities in Pounds On Fully Extended Outriggers See Set Up Note 2.

95 Ft. Main Boom + 61 Ft. Offset Fly

Load Radius in Feet	1° Offset		15° Offset		30° Offset		Load Radius in Feet
	Loaded Boom Angle (Deg.)	360°	Loaded Boom Angle (Deg.)	360°	Loaded Boom Angle (Deg.)	360°	
35	77.5	9,500					35
40	75.5	9,500					40
45	74.0	9,000					45
50	72.0	8,400	77.0	6,200			50
55	70.0	7,800	75.5	5,900			55
60	68.0	7,200	73.5	5,600			60
65	66.0	6,800	71.5	5,200	76.5	4,300	65
70	64.0	6,300	69.5	5,000	74.5	4,100	70
75	62.0	6,000	67.0	4,800	72.0	4,000	75
80	60.0	5,600	65.0	4,800	70.0	3,800	80
85	58.0	5,200	63.0	4,400	68.0	3,700	85
90	55.5	4,500	60.5	4,200	65.5	3,600	90
95	53.0	3,800	58.5	4,000	63.0	3,500	95
100	50.5	3,300	56.0	3,800	60.5	3,400	100
105	47.5	2,800	53.0	3,300	58.0	3,300	105
110	45.0	2,300	50.5	2,800	55.0	3,200	110
115	42.0	1,900	47.5	2,400	52.0	2,800	115
120	39.0	1,500	44.0	1,900	48.5	2,300	120
125			41.0	1,600	45.0	1,900	125
130			37.0	1,200	40.5	1,400	130

**WARNING**  
Do Not Lower 61 Ft. Offset Fly in Working Position Below 35.5 Degrees Unless Main Boom Length is 76 Ft. Or Less, Since Loss Of Stability Will Occur Causing A Tipping Condition.



**BOOM MODE "B" OF COUNTERWEIGHT**

Maximum Allowable Lifting Capacities Rated Lifting Capacities in Pounds On Fully Extended Outriggers See Set Up Note 2.

115 Ft. Main Boom + 36.5 Ft. Offset Fly

Load Radius in Feet	1° Offset		15° Offset		30° Offset		Load Radius in Feet
	Loaded Boom Angle (Deg.)	360°	Loaded Boom Angle (Deg.)	360°	Loaded Boom Angle (Deg.)	360°	
35	76.5	10,500					35
40	75.0	10,500					40
45	73.0	10,500	76.5	10,100			45
50	71.5	10,500	75.0	10,100	78.0*	8,700	50
55	69.5	10,500	73.0	10,100	76.0	8,400	55
60	67.5	8,900	71.0	10,100	74.0	8,100	60
65	65.0	8,300	69.0	9,200	71.5	7,800	65
70	63.0	7,000	66.5	7,000	69.5	7,600	70
75	60.5	5,900	64.0	6,600	67.5	7,300	75
80	58.0	5,000	61.5	5,600	65.0	6,200	80
85	55.5	4,200	59.0	4,800	62.5	5,300	85
90	53.0	3,500	56.5	4,000	59.5	4,500	90
95	50.5	2,900	54.0	3,300	57.0	3,800	95
100	47.5	2,300	51.0	2,800	54.0	3,100	100
105	45.0	1,800	48.5	2,200	51.0	2,500	105
110			45.0	1,700	48.0	2,000	110
115					44.5	1,500	115

**WARNING**  
Do Not Lower 36.5 Ft. Offset Fly in Working Position Below 42 Degrees Unless Main Boom Length is 84 Ft. Or Less, Since Loss Of Stability Will Occur Causing A Tipping Condition.

\* This capacity based on maximum obtainable boom angle.

**BOOM MODE "B" OF COUNTERWEIGHT**

Maximum Allowable Lifting Capacities Rated Lifting Capacities in Pounds On Fully Extended Outriggers See Set Up Note 2.

115 Ft. Main Boom + 61 Ft. Offset Fly

Load Radius in Feet	1° Offset		15° Offset		30° Offset		Load Radius in Feet
	Loaded Boom Angle (Deg.)	360°	Loaded Boom Angle (Deg.)	360°	Loaded Boom Angle (Deg.)	360°	
40	77.5	7,100					40
45	76.0	7,100					45
50	74.5	7,100					50
55	73.0	7,100					55
60	71.5	7,100	76.5	8,000			60
65	70.0	7,100	75.0	5,700			65
70	68.5	7,100	73.0	5,400	77.5	4,300	70
75	67.0	6,700	71.5	5,200	76.0	4,200	75
80	65.0	5,600	69.5	4,900	74.0	4,000	80
85	63.0	4,800	68.0	4,700	72.0	3,800	85
90	61.0	4,100	66.0	4,500	70.5	3,800	90
95	59.0	3,400	64.0	4,200	68.5	3,700	95
100	56.5	2,900	62.0	3,600	66.5	3,600	100
105	54.5	2,400	59.5	3,000	64.5	3,500	105
110	52.0	1,900	57.5	2,500	62.0	3,100	110
115	50.0	1,500	55.0	2,100	59.5	2,600	115
120			52.5	1,700	57.0	2,100	120
125			50.0	1,300	54.5	1,700	125
130					51.5	1,300	130

**WARNING**  
Do Not Lower 61 Ft. Offset Fly in Working Position Below 47.5 Degrees Unless Main Boom Length is 76 Ft. Or Less, Since Loss Of Stability Will Occur Causing A Tipping Condition.

NOTE: Refer To Page 5 For "Lifting Capacity Deductions" For Capacity Reductions Caused By Stowed Or Erected Auxiliary Load Handling Equipment

# Extended Outriggers - Main Boom Capacities - 4,000 lb. Counterweight

Maximum Allowable Lifting Capacities Rated Lifting Capacities in Pounds On Fully Extended Outriggers See Set Up Note 2.							
38 Fl. To 45 Fl. Main Boom							
Load Radius In Feet	38 Fl.			45 Fl.			Load Radius In Feet
	Loaded Boom Angle (Deg.)	360°	Over Rear	Loaded Boom Angle (Deg.)	360°	Over Rear	
10				71.0	87,400	87,400	10
12				68.5	87,400	87,400	12
15	58.5	95,000	95,000	64.0	87,400	87,400	15
20	48.5	69,300	69,300	56.5	68,700	68,700	20
25	36.5	49,000	49,000	48.0	48,300	48,300	25
30	17.5	35,200	35,200	38.0	34,700	34,700	30
35				24.5	26,200	26,200	35
Min. Boom Angle/Cap.	0°	26,300	26,300	0°	21,100	21,100	Min. Boom Angle/Cap.

Maximum Allowable Lifting Capacities Rated Lifting Capacities in Pounds On Fully Extended Outriggers See Set Up Note 2.							
55 Fl. To 63.6 Fl. Main Boom							
Load Radius In Feet	55 Fl.			63.6 Fl.			Load Radius In Feet
	Loaded Boom Angle (Deg.)	360°	Over Rear	Loaded Boom Angle (Deg.)	360°	Over Rear	
10	75.0	85,600	85,600				10
12	73.0	85,600	85,600	75.5	66,300	56,300	12
15	69.5	85,600	85,600	73.0	56,300	56,300	15
20	63.5	68,000	88,000	68.0	63,000	53,000	20
25	57.5	47,600	47,600	63.0	44,800	44,800	25
30	50.5	34,000	34,000	57.5	33,600	33,600	30
35	43.0	25,700	25,700	51.5	25,300	25,300	35
40	34.0	19,900	20,000	45.0	19,600	19,600	40
45	22.0	15,400	15,800	38.0	15,100	15,500	45
50				28.0	11,800	12,400	50
55				15.5	9,300	10,000	55
Min. Boom Angle/Cap.	0°	13,200	13,800	0°	6,500	9,200	Min. Boom Angle/Cap.

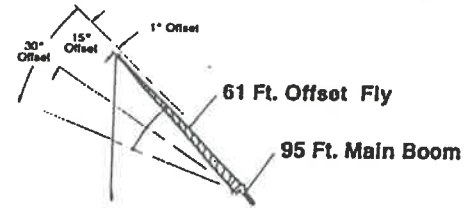
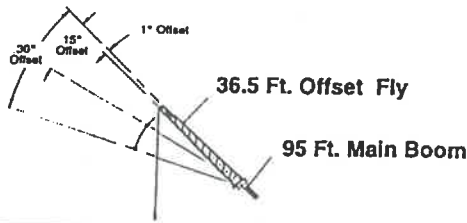
Maximum Allowable Lifting Capacities Rated Lifting Capacities in Pounds On Fully Extended Outriggers See Set Up Note 2.										
BOOM MODE "B" 4,000# COUNTERWEIGHT										
38 Fl. To 55 Fl. Main Boom										
Load Radius In Feet	38 Fl.			45 Fl.			55 Fl.		Load Radius In Feet	
	Loaded Boom Angle (Deg.)	360°	Over Rear	Loaded Boom Angle (Deg.)	360°	Over Rear	Loaded Boom Angle (Deg.)	360°		Over Rear
10				71.0	42,000	42,000	74.5	42,000	42,000	10
12				68.0	42,000	42,000	72.5	42,000	42,000	12
15	58.5	95,000	95,000	64.0	42,000	42,000	69.0	42,000	42,000	15
20	48.5	69,300	69,300	56.5	42,000	42,000	63.5	42,000	42,000	20
25	36.5	49,000	49,000	48.0	42,000	42,000	57.5	42,000	42,000	25
30	17.5	35,200	35,200	38.0	35,900	35,500	50.5	36,400	36,400	30
35				24.5	27,300	27,300	43.0	27,800	27,800	35
40							34.0	22,100	22,100	40
45							22.0	17,600	17,600	45
Min. Boom Angle/Cap.	0°	26,300	26,300	0°	20,100	20,100	0°	14,400	14,400	Min. Boom Angle/Cap.

Maximum Allowable Lifting Capacities Rated Lifting Capacities in Pounds On Fully Extended Outriggers See Set Up Note 2.										
BOOM MODE "B" 4,000# COUNTERWEIGHT										
95 Fl. To 115 Fl. Main Boom										
Load Radius In Feet	95 Fl.			105 Fl.			115 Fl.		Load Radius In Feet	
	Loaded Boom Angle (Deg.)	360°	Over Rear	Loaded Boom Angle (Deg.)	360°	Over Rear	Loaded Boom Angle (Deg.)	360°		Over Rear
20	70.5	38,600	30,600							20
25	73.5	33,800	33,800	75.5	30,300	30,300	77.0	24,500	24,500	25
30	70.0	29,800	29,800	72.5	27,000	27,000	74.5	24,500	24,500	30
35	67.0	26,600	26,600	69.5	24,100	24,100	72.0	22,200	22,200	35
40	63.5	22,900	22,900	66.5	21,700	21,700	69.5	20,000	20,000	40
45	59.5	18,500	18,700	63.5	18,600	18,700	66.5	18,100	18,100	45
50	56.0	15,100	15,400	60.0	15,200	15,500	63.5	15,200	15,800	50
55	52.0	12,500	12,900	56.5	12,600	13,000	60.5	12,700	13,100	55
60	47.5	10,500	11,000	53.0	10,500	11,100	57.5	10,000	11,200	60
65	43.0	8,800	9,300	49.5	8,800	9,400	54.0	8,900	9,500	65
70	38.5	7,300	8,000	45.5	7,400	8,000	51.0	7,500	8,100	70
75	32.5	6,200	6,800	41.0	6,300	6,900	47.5	6,300	6,900	75
80	26.0	5,100	5,800	36.5	5,200	5,900	43.5	5,300	5,900	80
85	17.0	4,300	4,900	31.5	4,400	5,000	39.5	4,400	5,000	85
90				25.0	3,600	4,200	35.0	3,700	4,300	90
95				16.0	2,900	3,500	30.0	3,000	3,600	95
100							24.0	2,400	3,000	100
Min. Boom Angle/Cap.	0°	3,000	4,400	0°	2,600	3,100	19.5°			Min. Boom Angle/Cap.

65 Fl. To 85 Fl. Main Boom										
Load Radius In Feet	65 Fl.			75 Fl.			85 Fl.		Load Radius In Feet	
	Loaded Boom Angle (Deg.)	360°	Over Rear	Loaded Boom Angle (Deg.)	360°	Over Rear	Loaded Boom Angle (Deg.)	360°		Over Rear
12	75.5	42,000	42,000							12
15	73.0	42,000	42,000	75.5	42,000	42,000	77.5	42,000	42,000	15
20	68.0	42,000	42,000	71.5	42,000	42,000	74.5	42,000	42,000	20
25	63.5	42,000	42,000	67.5	42,000	42,000	71.0	41,900	41,800	25
30	58.0	36,800	36,800	63.0	37,000	37,000	67.0	36,800	36,900	30
35	52.5	28,200	28,200	58.5	28,400	28,400	63.0	28,500	28,500	35
40	46.5	22,400	22,400	53.5	22,600	22,600	59.0	22,800	22,800	40
45	39.5	18,000	18,200	48.5	18,200	18,400	55.0	18,400	18,500	45
50	31.0	14,800	15,000	43.0	14,800	15,200	50.5	15,000	15,300	50
55	20.0	12,000	12,500	36.5	12,200	12,700	45.5	12,400	12,800	55
60				29.0	10,100	10,700	40.5	10,300	10,900	60
65				18.5	8,400	8,100	34.5	8,600	9,200	65
70							27.5	7,200	7,800	70
75							17.5	6,000	6,700	75
Min. Boom Angle/Cap.	0°	10,600	10,700	0°	7,500	8,100	0°	5,400	6,000	Min. Boom Angle/Cap.

NOTE: Refer To Page 5 For "Lifting Capacity Deductions" For Capacity Reductions Caused By Stowed Or Erected Auxiliary Load Handling Equipment.

## Extended Outriggers - Fly Capacities - Boom Mode "B" - 4,000 lb. Counterweight

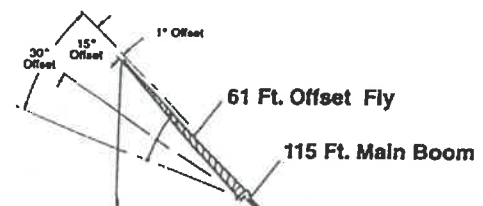
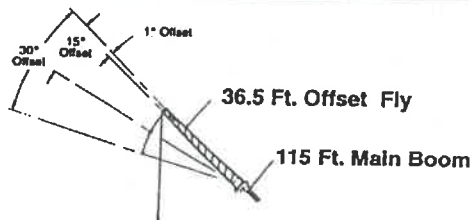


BOOM MODE "B" 4,000# COUNTERWEIGHT							
Maximum Allowable Lifting Capacities Rated Lifting Capacities in Pounds On Fully Extended Outriggers See Set Up Note 2.							
95 Ft. Main Boom + 36.5 Ft. Offset Fly							
Load Radius In Feet	1° Offset		15° Offset		30° Offset		Load Radius In Feet
	Loaded Boom Angle (Deg.)	360°	Loaded Boom Angle (Deg.)	360°	Loaded Boom Angle (Deg.)	360°	
30	78.5	16,900					30
35	74.0	15,700	77.5	11,900			35
40	72.0	14,600	75.5	11,300			40
45	70.0	13,700	73.5	10,700	77.0	8,700	45
50	67.5	12,800	71.0	10,300	74.5	8,300	50
55	65.0	12,100	68.5	9,800	72.0	8,000	55
60	62.5	11,400	66.0	9,400	69.5	7,700	60
65	60.0	10,300	63.5	8,800	67.0	7,400	65
70	57.5	9,800	61.0	8,500	64.5	7,200	70
75	54.5	7,700	58.5	8,100	61.5	6,900	75
80	51.5	6,600	55.5	7,200	58.5	6,700	80
85	48.5	5,700	52.5	6,200	55.5	6,600	85
90	45.0	4,900	49.0	5,400	52.0	5,700	90
95	41.5	4,200	45.5	4,600	48.5	4,800	95
100	38.0	3,600	42.0	4,000	44.5	4,200	100
105	34.0	3,100	37.5	3,400	40.5	3,600	105
110	29.5	2,600	33.0	2,800	35.5	3,000	110
115	24.5	2,200	28.0	2,300	29.0	2,400	115
120	17.5	1,800	20.5	1,900			120

**WARNING**  
Do Not Lower 36.5 Ft. Offset Fly in Working Position Below 12.5 Degrees Unless Main Boom Length is 92 Ft. Or Less, Since Loss Of Stability Will Occur Causing A Tipping Condition.

BOOM MODE "B" 4,000# COUNTERWEIGHT							
Maximum Allowable Lifting Capacities Rated Lifting Capacities in Pounds On Fully Extended Outriggers See Set Up Note 2.							
95 Ft. Main Boom + 61 Ft. Offset Fly							
Load Radius In Feet	1° Offset		15° Offset		30° Offset		Load Radius In Feet
	Loaded Boom Angle (Deg.)	360°	Loaded Boom Angle (Deg.)	360°	Loaded Boom Angle (Deg.)	360°	
35	77.5	8,500					35
40	75.5	9,500					40
45	74.0	9,000					45
50	72.0	8,400	77.0	6,200			50
55	70.0	7,800	75.5	5,900			55
60	68.0	7,300	73.5	5,600			60
65	66.0	6,800	71.5	5,300	78.5	4,300	65
70	64.0	6,300	69.5	5,000	74.5	4,100	70
75	62.0	6,000	67.0	4,800	72.0	4,000	75
80	60.0	5,800	65.0	4,600	70.0	3,800	80
85	58.0	5,300	63.0	4,400	68.0	3,700	85
90	55.5	5,000	60.5	4,200	65.5	3,600	90
95	53.5	4,800	58.5	4,000	63.0	3,500	95
100	50.5	4,300	56.0	3,900	60.5	3,400	100
105	48.0	3,700	53.5	3,700	58.0	3,300	105
110	45.5	3,200	50.5	3,600	55.0	3,200	110
115	42.5	2,800	48.0	3,300	52.0	3,100	115
120	39.5	2,400	44.5	2,800	49.0	3,100	120
125	36.0	2,000	41.0	2,300	45.0	2,600	125
130	32.5	1,700	37.5	2,000	41.0	2,200	130
135	28.5	1,400	33.5	1,600	36.0	1,800	135
140			28.5	1,300	30.0	1,300	140

**WARNING**  
Do Not Lower 61 Ft. Offset Fly in Working Position Below 27 Degrees Unless Main Boom Length is 84 Ft. Or Less, Since Loss Of Stability Will Occur Causing A Tipping Condition.



BOOM MODE "B" 4,000# COUNTERWEIGHT							
Maximum Allowable Lifting Capacities Rated Lifting Capacities in Pounds On Fully Extended Outriggers See Set Up Note 2.							
115 Ft. Main Boom + 36.5 Ft. Offset Fly							
Load Radius In Feet	1° Offset		15° Offset		30° Offset		Load Radius In Feet
	Loaded Boom Angle (Deg.)	360°	Loaded Boom Angle (Deg.)	360°	Loaded Boom Angle (Deg.)	360°	
35	78.5	10,500					35
40	75.0	10,800					40
45	73.0	10,600					45
50	71.5	10,500	76.5	10,100			50
55	69.5	10,500	75.0	10,100	78.0	8,700	55
60	67.5	10,500	73.0	10,100	76.0	8,400	60
65	65.5	10,500	71.0	10,100	74.0	8,100	65
70	63.5	10,000	69.0	9,700	71.5	7,800	70
75	61.0	8,600	67.0	9,300	69.5	7,600	75
80	58.5	7,400	64.5	8,100	67.5	7,400	80
85	56.0	6,300	62.0	7,000	65.0	7,100	85
90	53.5	5,400	59.5	6,000	63.0	6,500	90
95	51.0	4,700	57.0	5,200	60.0	5,600	95
100	48.0	4,000	54.5	4,400	57.5	4,800	100
105	45.5	3,400	51.5	3,800	54.5	4,100	105
110	42.5	2,800	48.5	3,200	51.5	3,500	110
115	39.0	2,300	45.5	2,700	48.0	2,900	115
120		1,900	42.5	2,200	45.0	2,400	120
125			39.0	1,700	41.0	1,900	125
					37.0	1,500	125

**WARNING**  
Do Not Lower 36.5 Ft. Offset Fly in Working Position Below 35.5 Degrees Unless Main Boom Length is 92 Ft. Or Less, Since Loss Of Stability Will Occur Causing A Tipping Condition.

BOOM MODE "B" 4,000# COUNTERWEIGHT							
Maximum Allowable Lifting Capacities Rated Lifting Capacities in Pounds On Fully Extended Outriggers See Set Up Note 2.							
115 Ft. Main Boom + 61 Ft. Offset Fly							
Load Radius In Feet	1° Offset		15° Offset		30° Offset		Load Radius In Feet
	Loaded Boom Angle (Deg.)	360°	Loaded Boom Angle (Deg.)	360°	Loaded Boom Angle (Deg.)	360°	
40	77.5	7,100					40
45	76.0	7,100					45
50	74.5	7,100					50
55	73.0	7,100					55
60	71.5	7,100	76.5	6,000			60
65	70.0	7,100	75.0	5,700			65
70	68.5	7,100	73.0	5,400	77.5	4,300	70
75	67.0	6,700	71.5	5,200	76.0	4,200	75
80	65.5	6,300	69.5	4,900	74.0	4,000	80
85	63.5	6,000	68.0	4,700	72.0	3,900	85
90	61.5	5,200	66.0	4,500	70.5	3,800	90
95	59.5	4,500	64.0	4,400	68.5	3,700	95
100	57.0	3,900	62.5	4,200	66.5	3,600	100
105	55.0	3,400	60.5	4,000	64.5	3,500	105
110	52.5	2,900	58.0	3,500	62.0	3,400	110
115	50.5	2,400	55.5	3,000	60.0	3,300	115
120	48.0	2,000	53.0	2,500	57.5	3,000	120
125	45.5	1,600	50.5	2,100	55.0	2,500	125
130			48.0	1,700	52.0	2,100	130
135			45.0	1,400	49.0	1,700	135
140					46.0	1,300	140

**WARNING**  
Do Not Lower 61 Ft. Offset Fly in Working Position Below 42 Degrees Unless Main Boom Length is 84 Ft. Or Less, Since Loss Of Stability Will Occur Causing A Tipping Condition.

\* This capacity based on maximum obtainable boom angle.

NOTE: Refer To Page 5 For "Lifting Capacity Deductions" For Capacity Reductions Caused By Stowed Or Erected Auxiliary Load Handling Equipment.

## Extended Outriggers - Main Boom Capacities - 8,000 lb. Counterweight

Maximum Allowable Lifting Capacities Rated Lifting Capacities in Pounds On Fully Extended Outriggers See Set Up Note 2.							
A-max Mode 8,000# COUNTERWEIGHT							
38 Fl. To 45 Fl. Main Boom							
Load Radius in Feet	38 Fl.			45 Fl.			Load Radius in Feet
	Loaded Boom Angle (Deg.)	360°	Over Rear	Loaded Boom Angle (Deg.)	360°	Over Rear	
10				71.0	87,400	87,400	10
12				68.5	87,400	87,400	12
15	58.5	97,200	97,200	64.0	87,400	87,400	15
20	48.5	71,800	71,800	56.5	71,200	71,200	20
25	36.5	53,600	53,600	48.0	52,900	52,900	25
30	17.5	38,700	38,700	38.0	38,100	38,100	30
35				24.5	29,000	29,000	35
Min. Boom Angle/Cap.	0°	26,300	26,300	0°	21,100	21,100	Min. Boom Angle/Cap.

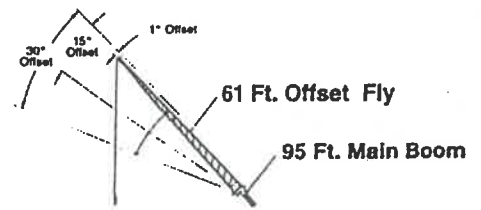
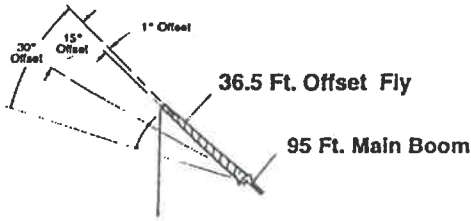
Maximum Allowable Lifting Capacities Rated Lifting Capacities in Pounds On Fully Extended Outriggers See Set Up Note 2.							
A-max Mode 8,000# COUNTERWEIGHT							
55 Fl. To 63.6 Fl. Main Boom							
Load Radius in Feet	55 Fl.			63.6 Fl.			Load Radius in Feet
	Loaded Boom Angle (Deg.)	360°	Over Rear	Loaded Boom Angle (Deg.)	360°	Over Rear	
10	75.0	85,600	85,600	75.5	66,300	66,300	10
12	73.0	85,600	85,600	73.0	64,300	64,300	12
15	69.5	85,600	85,600	68.0	63,000	63,000	15
20	63.5	70,500	70,500	63.0	44,900	44,900	20
25	57.5	52,100	52,100	57.5	37,100	37,100	25
30	50.5	37,500	37,500	51.5	28,100	28,100	30
35	43.0	28,400	28,400	45.0	22,000	22,000	35
40	34.0	22,300	22,300	38.0	17,600	17,600	40
45	22.0	17,800	17,800	29.0	14,000	14,200	45
50				15.5	11,200	11,600	50
55							55
Min. Boom Angle/Cap.	0°	14,800	14,800	0°	10,400	10,800	Min. Boom Angle/Cap.

Maximum Allowable Lifting Capacities Rated Lifting Capacities in Pounds On Fully Extended Outriggers See Set Up Note 2.							
BOOM MODE "B" 8,000# COUNTERWEIGHT							
38 Fl. To 55 Fl. Main Boom							
Load Radius in Feet	38 Fl.			45 Fl.			Load Radius in Feet
	Loaded Boom Angle (Deg.)	360°	Over Rear	Loaded Boom Angle (Deg.)	360°	Over Rear	
10				71.0	42,000	42,000	10
12				68.0	42,000	42,000	12
15	58.5	97,200	97,200	64.0	42,000	42,000	15
20	48.5	71,800	71,800	56.5	42,000	42,000	20
25	36.5	53,600	53,600	48.0	42,000	42,000	25
30	17.5	38,700	38,700	38.0	39,300	39,300	30
35				24.5	30,100	30,100	35
40							40
45							45
Min. Boom Angle/Cap.	0°	26,300	26,300	0°	20,100	20,100	Min. Boom Angle/Cap.

Maximum Allowable Lifting Capacities Rated Lifting Capacities in Pounds On Fully Extended Outriggers See Set Up Note 2.								
BOOM MODE "B" 8,000# COUNTERWEIGHT								
95 Fl. To 115 Fl. Main Boom								
Load Radius in Feet	95 Fl.			105 Fl.		115 Fl.		Load Radius in Feet
	Loaded Boom Angle (Deg.)	360°	Over Rear	Loaded Boom Angle (Deg.)	360°	Over Rear		
20	76.5	38,600	38,600	75.5	30,300	30,300	20	
25	73.5	33,800	33,800	72.5	27,000	27,000	25	
30	70.0	29,800	29,800	69.5	24,100	24,100	30	
35	67.0	26,600	26,600	66.5	21,700	21,700	35	
40	63.5	23,900	23,900	63.5	19,800	19,800	40	
45	60.0	20,700	20,700	60.5	17,300	17,300	45	
50	56.0	17,200	17,200	57.5	14,500	14,600	50	
55	52.0	14,400	14,500	54.5	12,500	12,500	55	
60	48.0	12,200	12,400	51.5	10,700	10,700	60	
65	43.5	10,300	10,700	48.5	8,900	9,200	65	
70	38.5	8,800	9,200	45.5	7,600	7,600	70	
75	33.0	7,500	7,900	41.5	6,500	6,500	75	
80	28.0	6,400	6,800	38.5	5,500	5,900	80	
85	17.0	5,400	5,800	31.5	4,700	5,100	85	
90				25.0	4,000	4,400	90	
95				16.5	3,900	4,400	95	
100							100	
105							105	
Min. Boom Angle/Cap.	0°	4,700	4,700	0°	3,500	3,500	Min. Boom Angle/Cap.	

Maximum Allowable Lifting Capacities Rated Lifting Capacities in Pounds On Fully Extended Outriggers See Set Up Note 2.							
BOOM MODE "B" 8,000# COUNTERWEIGHT							
65 Fl. To 85 Fl. Main Boom							
Load Radius in Feet	65 Fl.			75 Fl.			Load Radius in Feet
	Loaded Boom Angle (Deg.)	360°	Over Rear	Loaded Boom Angle (Deg.)	360°	Over Rear	
12	75.5	42,000	42,000	75.5	42,000	42,000	12
15	73.0	42,000	42,000	71.5	42,000	42,000	15
20	68.0	42,000	42,000	67.5	42,000	42,000	20
25	63.5	42,000	42,000	63.0	40,400	40,400	25
30	58.0	40,200	40,200	58.5	31,200	31,200	30
35	52.5	31,000	31,000	54.0	25,000	25,000	35
40	46.5	24,800	24,800	48.5	20,400	20,400	40
45	39.5	20,200	20,200	43.0	17,000	17,000	45
50	31.5	16,800	16,800	38.5	14,100	14,300	50
55	20.0	13,900	14,100	29.0	11,900	12,200	55
60				18.5	10,000	10,400	60
65							65
70							70
75							75
Min. Boom Angle/Cap.	0°	10,700	10,700	0°	8,100	8,100	Min. Boom Angle/Cap.

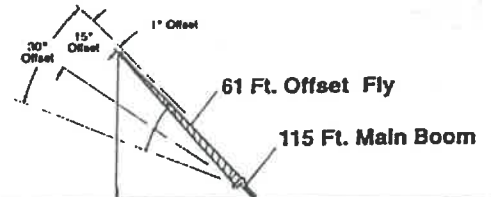
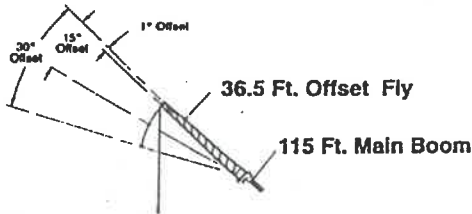
# Extended Outriggers - Fly Capacities - Boom Mode "B" - 8,000 lb. Counterweight



BOOM MODE "B" 8,000# COUNTERWEIGHT		Maximum Allowable Lifting Capacities Rated Lifting Capacities in Pounds On Fully Extended Outriggers See Set Up Note 2.					
95 Ft. Main Boom + 36.5 Ft. Offset Fly							
Load Radius in Feet	1° Offset		15° Offset		30° Offset		Load Radius in Feet
	Loaded Boom Angle (Deg.)	360°	Loaded Boom Angle (Deg.)	360°	Loaded Boom Angle (Deg.)	360°	
30	76.5	16,900					30
35	74.0	15,700	77.5	11,900			35
40	72.0	14,600	75.5	11,200			40
45	70.0	13,700	73.5	10,700	77.0	8,700	45
50	67.5	12,800	71.0	10,200	74.5	8,200	50
55	65.0	12,100	69.5	9,800	72.0	8,000	55
60	62.5	11,400	66.0	9,400	69.5	7,700	60
65	60.0	10,800	63.5	8,900	67.0	7,400	65
70	57.5	10,200	61.0	8,500	64.5	7,200	70
75	54.5	9,900	58.5	8,100	61.5	6,900	75
80	52.0	7,800	55.5	7,800	58.5	6,700	80
85	48.5	6,800	52.5	7,300	55.5	6,600	85
90	45.5	6,000	49.5	6,400	52.5	6,400	90
95	42.0	5,200	46.0	5,800	49.0	5,000	95
100	38.5	4,600	42.0	4,900	45.0	5,200	100
105	34.5	4,000	38.0	4,300	40.5	4,500	105
110	30.0	3,400	33.5	3,700	35.5	3,800	110
115	24.5	3,000	28.0	3,100	29.5	3,200	115
120	18.0	2,500	21.0	2,700			120
Min. Boom Angle/Cap.	0°	1,700	0°	1,700	0°	1,800	Min. Boom Angle/Cap.

BOOM MODE "B" 8,000# COUNTERWEIGHT		Maximum Allowable Lifting Capacities Rated Lifting Capacities in Pounds On Fully Extended Outriggers See Set Up Note 2.					
95 Ft. Main Boom + 61 Ft. Offset Fly							
Load Radius in Feet	1° Offset		15° Offset		30° Offset		Load Radius in Feet
	Loaded Boom Angle (Deg.)	360°	Loaded Boom Angle (Deg.)	360°	Loaded Boom Angle (Deg.)	360°	
35	77.5	9,500					35
40	75.5	9,500					40
45	74.0	9,000					45
50	72.0	8,400	77.0	8,200			50
55	70.0	7,800	75.5	5,900			55
60	68.0	7,300	73.5	5,800			60
65	66.0	6,800	71.5	5,300	76.5	4,300	65
70	64.0	6,300	69.5	5,000	74.5	4,100	70
75	62.0	6,000	67.0	4,800	72.0	4,000	75
80	60.0	5,800	65.0	4,600	70.0	3,800	80
85	58.0	5,300	63.0	4,400	68.0	3,700	85
90	55.5	6,000	60.5	4,200	65.5	3,600	90
95	53.5	4,800	58.5	4,000	63.0	3,600	95
100	51.0	4,500	56.0	3,900	60.5	3,400	100
105	48.5	4,300	53.5	3,700	58.0	3,300	105
110	45.5	4,100	50.5	3,600	55.0	3,200	110
115	42.5	3,600	48.0	3,500	52.0	3,100	115
120	39.5	3,100	45.0	3,300	49.0	3,100	120
125	36.5	2,700	41.5	3,100	45.5	3,000	125
130	32.5	2,400	38.0	2,700	41.5	2,900	130
135	28.5	2,000	33.5	2,300	36.5	2,400	135
140	24.0	1,700	28.5	1,900	30.0	2,000	140
145	17.5	1,400	21.5	1,600			145

**WARNING**  
Do Not Lower 61 Ft. Offset Fly in Working Position Below 14 Degrees Unless Main Boom Length is 92 Ft. Or Less, Since Loss Of Stability Will Occur Causing A Tipping Condition.



BOOM MODE "B" 8,000# COUNTERWEIGHT		Maximum Allowable Lifting Capacities Rated Lifting Capacities in Pounds On Fully Extended Outriggers See Set Up Note 2.					
115 Ft. Main Boom + 36.5 Ft. Offset Fly							
Load Radius in Feet	1° Offset		15° Offset		30° Offset		Load Radius in Feet
	Loaded Boom Angle (Deg.)	360°	Loaded Boom Angle (Deg.)	360°	Loaded Boom Angle (Deg.)	360°	
35	78.5	10,600					35
40	75.0	10,600					40
45	73.0	10,600	76.5	10,100			45
50	71.5	10,500	75.0	10,100	78.0*	8,700	50
55	69.5	10,500	73.0	10,100	76.0	8,400	55
60	67.5	10,500	71.0	10,100	74.0	8,100	60
65	66.0	10,300	69.0	9,700	71.5	7,800	65
70	63.5	9,900	67.0	9,300	69.5	7,600	70
75	61.5	8,700	65.0	8,900	67.5	7,400	75
80	59.0	7,600	62.5	8,200	65.0	7,100	80
85	56.5	6,600	60.0	7,100	63.0	7,000	85
90	54.0	5,700	57.5	6,200	60.5	6,700	90
95	51.5	5,000	54.5	5,400	57.5	5,800	95
100	48.5	4,300	52.0	4,700	55.0	5,100	100
105	45.5	3,700	49.0	4,100	52.0	4,400	105
110	42.5	3,200	46.0	3,500	48.5	3,800	110
115	39.5	2,700	43.0	3,000	45.5	3,200	115
120	36.0	2,300	39.5	2,500	41.5	2,700	120
125	32.5	1,900	35.5	2,100	37.5	2,200	125
130			31.5	1,700	33.0	1,800	130

**WARNING**  
Do Not Lower 36.5 Ft. Offset Fly in Working Position Below 28 Degrees Unless Main Boom Length is 101 Ft. Or Less, Since Loss Of Stability Will Occur Causing A Tipping Condition.  
\* This capacity based on maximum obtainable boom angle.

BOOM MODE "B" 8,000# COUNTERWEIGHT		Maximum Allowable Lifting Capacities Rated Lifting Capacities in Pounds On Fully Extended Outriggers See Set Up Note 2.					
115 Ft. Main Boom + 61 Ft. Offset Fly							
Load Radius in Feet	1° Offset		15° Offset		30° Offset		Load Radius in Feet
	Loaded Boom Angle (Deg.)	360°	Loaded Boom Angle (Deg.)	360°	Loaded Boom Angle (Deg.)	360°	
40	77.5	7,100					40
45	76.0	7,100					45
50	74.5	7,100					50
55	73.0	7,100					55
60	71.5	7,100	76.5	8,000			60
65	70.0	7,100	75.0	5,700			65
70	68.5	7,100	73.0	5,400	77.5	4,300	70
75	67.0	8,700	71.5	5,200	76.0	4,200	75
80	65.5	6,200	69.5	4,800	74.0	4,000	80
85	63.5	6,000	68.0	4,700	72.0	3,900	85
90	62.0	5,700	66.0	4,500	70.5	3,800	90
95	60.0	5,400	64.0	4,400	68.5	3,700	95
100	58.0	4,800	62.5	4,200	66.5	3,600	100
105	55.5	4,200	60.5	4,100	64.5	3,500	105
110	53.5	3,700	58.0	3,900	62.0	3,400	110
115	51.0	3,200	56.0	3,800	60.0	3,300	115
120	48.5	2,800	53.5	3,500	57.5	3,200	120
125	46.0	2,400	51.0	2,800	55.5	3,200	125
130	43.5	2,000	48.5	2,400	52.5	2,900	130
135	40.5	1,700	45.5	2,000	49.5	2,300	135
140	38.0	1,300	42.5	1,700	46.0	1,900	140
145			39.5	1,300	42.5	1,600	145

**WARNING**  
Do Not Lower 61 Ft. Offset Fly in Working Position Below 36 Degrees Unless Main Boom Length is 92 Ft. Or Less, Since Loss Of Stability Will Occur Causing A Tipping Condition.

NOTE: Refer To Page 5 For "Lifting Capacity Deductions" For Capacity Reductions Caused By Stowed Or Erected Auxiliary Load Handling Equipment.

# Extended Outriggers - Main Boom Capacities - 12,000 lb. Counterweight

Maximum Allowable Lifting Capacities Rated Lifting Capacities in Pounds On Fully Extended Outriggers See Set Up Note 2.							
38 Ft. To 45 Ft. Main Boom							
Load Radius In Feet	38 Ft.			45 Ft.			Load Radius In Feet
	Loaded Boom Angle (Deg.)	360°	Over Rear	Loaded Boom Angle (Deg.)	360°	Over Rear	
15	58.5	99,300	99,300	71.0	87,400	87,400	9
20	48.5	74,300	74,300	68.5	87,400	87,400	10
25	36.5	57,500	57,500	64.0	87,400	87,400	12
30	17.5	42,100	42,100	56.5	73,700	73,700	15
35				48.0	58,900	56,900	20
40				38.0	41,600	41,600	25
45				24.5	31,800	31,800	30
Min. Boom Angle/Cap.	0°	26,300	26,300	0°	21,100	21,100	Min. Boom Angle/Cap.

Maximum Allowable Lifting Capacities Rated Lifting Capacities in Pounds On Fully Extended Outriggers See Set Up Note 2.							
55 Ft. To 63.6 Ft. Main Boom							
Load Radius In Feet	55 Ft.			63.6 Ft.			Load Radius In Feet
	Loaded Boom Angle (Deg.)	360°	Over Rear	Loaded Boom Angle (Deg.)	360°	Over Rear	
10	75.0	85,600	85,600	75.5	58,300	58,300	10
12	73.0	85,600	85,600	73.0	58,300	58,300	12
15	69.5	85,600	85,600	70.0	58,300	58,300	15
20	63.5	72,900	73,000	68.0	53,000	53,000	20
25	57.5	58,300	58,300	63.0	44,900	44,900	25
30	50.5	40,900	40,900	57.5	38,700	38,700	30
35	43.0	31,300	31,300	51.5	30,900	30,900	35
40	34.5	24,700	24,700	45.5	24,400	24,400	40
45	22.0	19,900	19,900	38.0	19,600	19,600	45
50				29.0	16,000	16,000	50
55				16.0	13,100	13,100	55
Min. Boom Angle/Cap.	0°	14,800	14,800	0°	11,000	11,000	Min. Boom Angle/Cap.

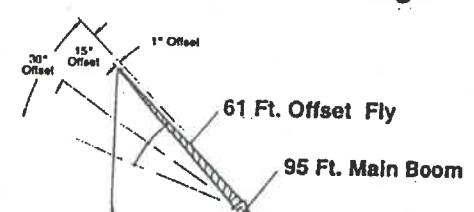
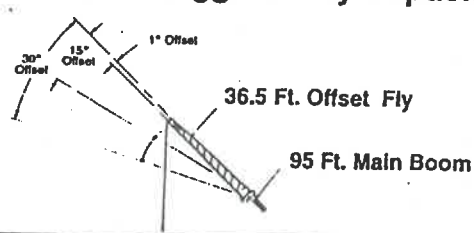
Maximum Allowable Lifting Capacities Rated Lifting Capacities in Pounds On Fully Extended Outriggers See Set Up Note 2.										
BOOM MODE "B" 12,000# COUNTERWEIGHT										
38 Ft. To 55 Ft. Main Boom										
Load Radius In Feet	38 Ft.			45 Ft.			55 Ft.			Load Radius In Feet
	Loaded Boom Angle (Deg.)	360°	Over Rear	Loaded Boom Angle (Deg.)	360°	Over Rear	Loaded Boom Angle (Deg.)	360°	Over Rear	
9				71.0	42,000	42,000	74.5	42,000	42,000	9
10				68.0	42,000	42,000	72.5	42,000	42,000	10
12				64.0	42,000	42,000	69.0	42,000	42,000	12
15	58.5	99,300	99,300	60.0	42,000	42,000	63.5	42,000	42,000	15
20	48.5	74,300	74,300	56.5	42,000	42,000	57.5	42,000	42,000	20
25	36.5	57,500	57,500	48.0	42,000	42,000	50.5	42,000	42,000	25
30	17.5	42,100	42,100	38.0	42,000	42,000	43.0	33,500	33,500	30
35				24.5	32,900	32,900	34.0	26,700	26,700	35
40							22.0	21,900	21,900	40
45										45
Min. Boom Angle/Cap.	0°	26,300	26,300	0°	20,100	20,100	0°	14,400	14,400	Min. Boom Angle/Cap.

Maximum Allowable Lifting Capacities Rated Lifting Capacities in Pounds On Fully Extended Outriggers See Set Up Note 2.										
BOOM MODE "B" 12,000# COUNTERWEIGHT										
85 Ft. To 115 Ft. Main Boom										
Load Radius In Feet	95 Ft.			105 Ft.			115 Ft.			Load Radius In Feet
	Loaded Boom Angle (Deg.)	360°	Over Rear	Loaded Boom Angle (Deg.)	360°	Over Rear	Loaded Boom Angle (Deg.)	360°	Over Rear	
20	76.5	38,900	38,900	75.5	30,300	30,300	77.0	24,600	24,600	20
25	73.5	33,800	33,800	72.5	27,000	27,000	74.5	24,600	24,500	25
30	70.0	29,800	29,800	69.5	24,100	24,100	72.0	22,200	22,200	30
35	67.0	26,800	26,800	66.5	21,700	21,700	69.5	20,000	20,000	35
40	63.5	23,900	23,900	63.5	19,000	19,000	66.5	18,100	18,100	40
45	60.0	21,700	21,700	60.5	17,900	17,900	63.5	16,300	16,300	45
50	56.0	19,000	19,000	57.0	16,200	16,200	61.0	14,900	14,900	50
55	52.0	16,100	16,100	53.5	13,900	13,900	58.0	13,800	13,800	55
60	48.0	13,800	13,800	49.5	12,000	12,100	54.5	12,000	12,100	60
65	43.5	11,900	12,000	46.0	10,300	10,400	51.0	10,400	10,500	65
70	38.5	10,200	10,400	41.5	8,900	9,100	47.5	9,000	9,200	70
75	33.0	8,800	9,000	37.0	7,700	7,900	44.0	7,800	8,000	75
80	26.5	7,600	7,800	31.5	6,600	6,900	40.0	6,700	7,000	80
85	17.0	6,500	6,800	25.0	5,700	6,000	35.5	5,800	6,100	85
90				16.5	4,900	5,200	30.5	5,000	5,300	90
95							24.5	4,300	4,800	95
100							16.0	3,700	4,000	100
105										105
Min. Boom Angle/Cap.	0°	4,700	4,700	0°	3,500	3,500	0°	2,500	2,500	Min. Boom Angle/Cap.

Maximum Allowable Lifting Capacities Rated Lifting Capacities in Pounds On Fully Extended Outriggers See Set Up Note 2.										
BOOM MODE "B" 12,000# COUNTERWEIGHT										
65 Ft. To 85 Ft. Main Boom										
Load Radius In Feet	65 Ft.			75 Ft.			85 Ft.			Load Radius In Feet
	Loaded Boom Angle (Deg.)	360°	Over Rear	Loaded Boom Angle (Deg.)	360°	Over Rear	Loaded Boom Angle (Deg.)	360°	Over Rear	
12	75.5	42,000	42,000	75.5	42,000	42,000	77.5	42,000	42,000	12
15	73.0	42,000	42,000	71.5	42,000	42,000	74.5	42,000	42,000	15
20	68.0	42,000	42,000	68.0	42,000	42,000	71.0	41,800	41,800	20
25	63.5	42,000	42,000	63.5	42,000	42,000	67.0	36,900	36,900	25
30	58.0	42,000	42,000	54.0	27,300	27,300	63.5	32,900	32,900	30
35	52.5	33,800	33,800	48.5	22,500	22,500	59.5	27,400	27,400	35
40	48.5	27,100	27,100	43.0	18,800	18,800	55.0	22,600	22,600	40
45	39.5	22,200	22,200	37.0	15,900	15,900	40.5	13,700	13,700	45
50	31.5	18,600	18,600	29.0	13,500	13,500	34.5	11,800	11,800	50
55	20.0	15,700	15,700	19.0	11,600	11,700	27.5	10,100	10,200	55
60							18.0	8,700	8,900	60
65										65
70										70
75										75
Min. Boom Angle/Cap.	0°	10,700	10,700	0°	8,100	8,100	0°	6,100	6,100	Min. Boom Angle/Cap.

NOTE: Refer To Page 5 For "Lifting Capacity Deductions" For Capacity Reductions Caused By Stowed Or Erected Auxillary Load Handling Equipment

*Full ext. main Boom + Jibs*  
**Extended Outriggers - Fly Capacities - Boom Mode "B" - 12,000 lb. Counterweight**



**BOOM MODE "B" 12,000# COUNTERWEIGHT**  
Maximum Allowable Lifting Capacities Rated Lifting Capacities in Pounds On Fully Extended Outriggers See Set Up Note 2.

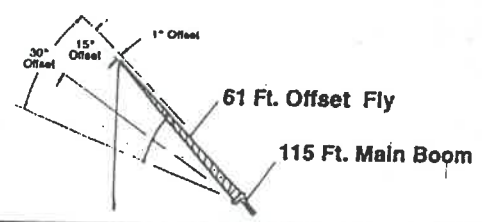
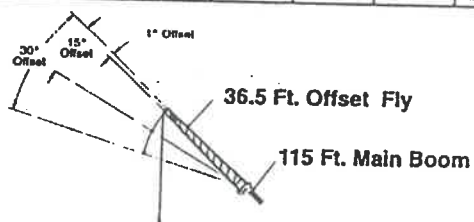
95 Ft. Main Boom + 36.5 Ft. Offset Fly

Load Radius In Feet	1° Offset		15° Offset		30° Offset		Load Radius In Feet
	Loaded Boom Angle (Deg.)	360°	Loaded Boom Angle (Deg.)	360°	Loaded Boom Angle (Deg.)	360°	
30	76.5	18,900					30
35	74.0	15,700	77.5	11,900			35
40	72.0	14,600	75.5	11,300			40
45	70.0	13,700	73.5	10,700	77.0	8,700	45
50	67.5	12,800	71.0	10,300	74.5	8,300	50
55	65.0	12,100	68.5	9,800	72.0	8,000	55
60	62.5	11,400	66.0	9,400	69.5	7,700	60
65	60.0	10,800	63.5	8,900	67.0	7,400	65
70	57.5	10,300	61.0	8,500	64.5	7,200	70
75	55.0	9,800	58.5	8,100	61.5	6,900	75
80	52.0	9,000	55.5	7,800	58.5	6,700	80
85	49.0	8,000	52.5	7,400	55.5	6,600	85
90	45.5	7,100	49.5	7,200	52.5	6,400	90
95	42.5	6,200	46.0	6,900	49.0	6,300	95
100	38.5	5,500	42.5	5,800	45.0	6,000	100
105	34.5	4,900	38.5	5,100	41.0	5,400	105
110	30.0	4,300	33.5	4,500	36.0	4,700	110
115	25.0	3,800	28.5	3,900	30.0	4,000	115
120	18.0	3,300	21.0	3,400			120
Min. Boom Angle/Cap.	0°	1,700	0°	1,700	0°	1,800	Min. Boom Angle/Cap.

**BOOM MODE "B" 12,000# COUNTERWEIGHT**  
Maximum Allowable Lifting Capacities Rated Lifting Capacities in Pounds On Fully Extended Outriggers See Set Up Note 2.

95 Ft. Main Boom + 61 Ft. Offset Fly

Load Radius In Feet	1° Offset		15° Offset		30° Offset		Load Radius In Feet
	Loaded Boom Angle (Deg.)	360°	Loaded Boom Angle (Deg.)	360°	Loaded Boom Angle (Deg.)	360°	
35	77.5	8,500					35
40	75.5	8,500					40
45	74.0	8,000					45
50	72.0	8,400	77.0	8,200			50
55	70.0	7,800	75.5	5,900			55
60	68.0	7,300	73.5	5,800			60
65	66.0	6,800	71.5	5,300	78.5	4,300	65
70	64.0	6,300	69.5	5,000	74.5	4,100	70
75	62.0	6,000	67.0	4,800	72.0	4,000	75
80	60.0	5,800	65.0	4,800	70.0	3,800	80
85	58.0	5,300	63.0	4,400	68.0	3,700	85
90	55.5	5,000	60.5	4,200	65.5	3,600	90
95	53.5	4,800	58.5	4,000	63.0	3,500	95
100	51.0	4,500	56.0	3,800	60.5	3,400	100
105	48.5	4,300	53.0	3,700	58.0	3,300	105
110	45.5	4,100	50.5	3,600	55.0	3,200	110
115	43.0	3,900	48.0	3,500	52.0	3,100	115
120	40.0	3,700	45.0	3,300	49.0	3,100	120
125	36.5	3,500	41.5	3,200	45.5	3,000	125
130	33.0	3,100	38.0	3,200	41.5	3,000	130
135	29.0	2,700	34.0	2,900	37.0	3,000	135
140	24.0	2,400	29.0	2,600	30.5	2,600	140
145	17.5	2,100	22.0	2,200			145
Min. Boom Angle/Cap.	0°	700	0°	700	0°	800	Min. Boom Angle/Cap.



**BOOM MODE "B" 12,000# COUNTERWEIGHT**  
Maximum Allowable Lifting Capacities Rated Lifting Capacities in Pounds On Fully Extended Outriggers See Set Up Note 2.

115 Ft. Main Boom + 36.5 Ft. Offset Fly

Load Radius In Feet	1° Offset		15° Offset		30° Offset		Load Radius In Feet
	Loaded Boom Angle (Deg.)	360°	Loaded Boom Angle (Deg.)	360°	Loaded Boom Angle (Deg.)	360°	
35	76.5	10,500					35
40	75.0	10,500					40
45	73.0	10,500	76.5	10,100			45
50	71.5	10,500	75.0	10,100	70.0	8,700	50
55	69.5	10,500	73.0	10,100	76.0	8,400	55
60	67.5	10,500	71.0	10,100	74.0	8,100	60
65	66.0	10,300	69.0	9,700	71.5	7,800	65
70	63.5	9,500	67.0	9,300	69.5	7,600	70
75	61.5	8,700	65.0	8,900	67.5	7,400	75
80	59.0	8,100	62.5	8,200	65.0	7,100	80
85	57.0	7,400	60.0	7,600	63.0	7,000	85
90	54.5	6,800	57.5	7,000	60.5	6,800	90
95	51.5	6,000	55.0	6,400	58.0	6,800	95
100	49.0	5,200	52.5	5,700	55.5	6,000	100
105	46.0	4,600	49.5	5,000	52.0	5,300	105
110	43.0	4,000	46.5	4,400	49.0	4,600	110
115	40.0	3,500	43.0	3,800	45.5	4,000	115
120	36.5	3,000	39.5	3,300	42.0	3,500	120
125	33.0	2,600	36.0	2,800	38.0	3,000	125
130	28.5	2,200	31.5	2,400	33.5	2,500	130
135	23.5	1,900	24.5	2,000	27.5	2,000	135

**BOOM MODE "B" 12,000# COUNTERWEIGHT**  
Maximum Allowable Lifting Capacities Rated Lifting Capacities in Pounds On Fully Extended Outriggers See Set Up Note 2.

115 Ft. Main Boom + 61 Ft. Offset Fly

Load Radius In Feet	1° Offset		15° Offset		30° Offset		Load Radius In Feet
	Loaded Boom Angle (Deg.)	360°	Loaded Boom Angle (Deg.)	360°	Loaded Boom Angle (Deg.)	360°	
40	77.5	7,100					40
45	76.0	7,100					45
50	74.5	7,100					50
55	73.0	7,100					55
60	71.5	7,100	78.5	6,000			60
65	70.0	7,100	75.0	5,700			65
70	68.5	7,100	73.0	5,400	77.5	4,300	70
75	67.0	6,700	71.5	5,200	76.0	4,200	75
80	65.5	6,300	69.5	4,900	74.0	4,000	80
85	63.5	6,000	68.0	4,700	72.0	3,800	85
90	62.0	5,700	66.0	4,500	70.5	3,800	90
95	60.0	5,400	64.0	4,400	68.5	3,700	95
100	58.0	5,100	62.5	4,200	66.5	3,600	100
105	56.0	4,800	60.5	4,100	64.5	3,500	105
110	53.5	4,400	58.0	3,900	62.0	3,400	110
115	51.5	4,000	56.0	3,800	60.0	3,300	115
120	49.0	3,500	54.0	3,700	57.5	3,200	120
125	46.5	3,100	51.5	3,500	55.5	3,200	125
130	44.0	2,700	49.0	3,100	52.5	3,100	130
135	41.0	2,300	46.0	2,700	50.0	3,000	135
140	38.0	2,000	43.0	2,300	46.5	2,600	140
145	35.0	1,700	39.5	2,000	43.0	2,200	145
150	31.5	1,400	36.0	1,600	39.0	1,800	150
155			32.5	1,200	34.5	1,500	155

**WARNING**  
Do Not Lower 36.5 Ft. Offset Fly in Working Position Below 17.5 Degrees Unless Main Boom Length is 109 Ft. Or Less, Since Loss of Stability Will Occur Causing A Tipping Condition.

**WARNING**  
Do Not Lower 61 Ft. Offset Fly in Working Position Below 29 Degrees Unless Main Boom Length is 100 Ft. Or Less, Since Loss of Stability Will Occur Causing A Tipping Condition.

\* This capacity based on maximum obtainable boom angle.  
**NOTE: Refer To Page 5 For "Lifting Capacity Deductions" For Capacity Reductions Caused By Stowed Or Erected Auxillary Load Handling Equipment.**



Full cut main boom.

**Extended Outriggers - Main Boom Capacities - 16,000 lb. Counterweight**

Maximum Allowable Lifting Capacities  
Rated Lifting Capacities in Pounds  
On Fully Extended Outriggers  
See Set Up Note 2.

16,000# COUNTERWEIGHT

38 Ft. To 45 Ft. Main Boom

Load Radius in Feet	38 Ft.			45 Ft.			Load Radius in Feet
	Loaded Boom Angle (Deg.)	360°	Over Rear	Loaded Boom Angle (Deg.)	360°	Over Rear	
9							9
10				71.0	87,400	87,400	10
12				68.5	87,400	87,400	12
15				64.0	87,400	87,400	15
20	48.5	76,600	76,600	56.5	76,000	76,000	20
25	36.5	59,400	59,400	48.0	58,900	58,900	25
30	17.5	45,600	45,600	38.0	45,100	45,100	30
35				24.5	34,600	34,600	35
Min. Boom Angle/Cap.	0°	26,300	26,300	0°	21,100	21,100	Min. Boom Angle/Cap.

Maximum Allowable Lifting Capacities  
Rated Lifting Capacities in Pounds  
On Fully Extended Outriggers  
See Set Up Note 2.

16,000# COUNTERWEIGHT

55 Ft. To 63.6 Ft. Main Boom

Load Radius in Feet	55 Ft.			63.6 Ft.			Load Radius in Feet
	Loaded Boom Angle (Deg.)	360°	Over Rear	Loaded Boom Angle (Deg.)	360°	Over Rear	
10	75.0	85,600	85,600				10
12	73.0	85,000	85,600	75.5	56,300	56,300	12
15	69.5	85,600	85,600	73.0	56,300	56,300	15
20	64.0	75,300	75,300	68.0	53,000	53,000	20
25	57.5	58,300	58,300	63.0	44,900	44,900	25
30	51.0	44,400	44,400	57.5	38,700	38,700	30
35	43.0	34,100	34,100	51.5	33,700	33,700	35
40	34.5	27,000	27,000	45.5	26,700	26,700	40
45	22.0	21,900	21,900	38.0	21,600	21,600	45
50				29.0	17,800	17,800	50
55				16.0	14,700	14,700	55
Min. Boom Angle/Cap.	0°	14,800	14,800	0°	11,000	11,000	Min. Boom Angle/Cap.

Maximum Allowable Lifting Capacities  
Rated Lifting Capacities in Pounds  
On Fully Extended Outriggers  
See Set Up Note 2.

BOOM MODE "B"  
16,000# COUNTERWEIGHT

38 Ft. To 55 Ft. Main Boom

Load Radius in Feet	38 Ft.			45 Ft.			55 Ft.			Load Radius in Feet
	Loaded Boom Angle (Deg.)	360°	Over Rear	Loaded Boom Angle (Deg.)	360°	Over Rear	Loaded Boom Angle (Deg.)	360°	Over Rear	
9										9
10				71.0	42,000	42,000	74.5	42,000	42,000	10
12				68.0	42,000	42,000	72.5	42,000	42,000	12
15				64.0	42,000	42,000	69.0	42,000	42,000	15
20	48.5	76,600	76,600	56.5	42,000	42,000	63.5	42,000	42,000	20
25	36.5	59,400	59,400	48.0	42,000	42,000	57.5	42,000	42,000	25
30	17.5	45,600	45,600	38.0	42,000	42,000	50.5	42,000	42,000	30
35				24.5	35,700	35,700	43.0	36,300	36,300	35
40							34.0	29,100	29,100	40
45							22.0	23,900	23,900	45
Min. Boom Angle/Cap.	0°	26,300	26,300	0°	20,100	20,100	0°	14,400	14,400	Min. Boom Angle/Cap.

Maximum Allowable Lifting Capacities  
Rated Lifting Capacities in Pounds  
On Fully Extended Outriggers  
See Set Up Note 2.

BOOM MODE "B"  
16,000# COUNTERWEIGHT

95 Ft. To 115 Ft. Main Boom

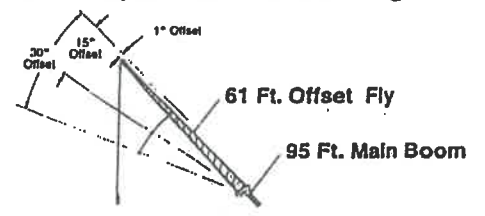
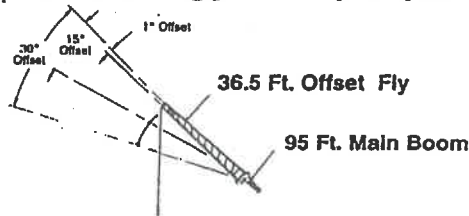
Load Radius in Feet	95 Ft.			105 Ft.			115 Ft.			Load Radius in Feet
	Loaded Boom Angle (Deg.)	360°	Over Rear	Loaded Boom Angle (Deg.)	360°	Over Rear	Loaded Boom Angle (Deg.)	360°	Over Rear	
20	76.5	38,600	38,600							20
25	73.5	33,800	33,800	75.5	30,300	30,300	77.0	24,500	24,600	25
30	70.0	29,800	29,800	72.5	27,000	27,000	74.5	24,600	24,600	30
35	67.0	26,000	26,000	69.5	24,100	24,100	72.0	22,200	22,200	35
40	63.5	23,900	23,900	66.5	21,700	21,700	69.5	20,000	20,000	40
45	60.0	21,700	21,700	63.5	19,800	19,800	66.5	18,100	18,100	45
50	56.0	19,800	19,800	60.5	17,900	17,900	63.5	16,300	16,300	50
55	52.5	17,700	17,700	57.0	16,200	16,200	61.0	14,900	14,900	55
60	48.0	15,200	15,200	53.5	14,800	14,800	58.0	13,600	13,600	60
65	43.5	13,200	13,200	50.0	13,300	13,300	54.5	12,500	12,500	65
70	38.5	11,600	11,600	46.0	11,600	11,600	51.5	11,800	11,800	70
75	33.0	10,100	10,100	41.5	10,200	10,200	48.0	10,300	10,300	75
80	26.5	8,800	8,900	37.0	8,900	8,900	44.0	9,000	9,000	80
85	17.0	7,700	7,800	31.5	7,800	7,800	40.0	7,800	7,900	85
90				25.5	6,800	6,900	35.5	6,800	7,000	90
95				16.5	5,900	6,100	30.5	6,000	6,100	95
100							24.5	5,200	5,400	100
105							16.0	4,600	4,700	105
Min. Boom Angle/Cap.	0°	4,700	4,700	0°	3,500	3,500	0°	2,500	2,500	Min. Boom Angle/Cap.

65 Ft. To 85 Ft. Main Boom

Load Radius in Feet	65 Ft.			75 Ft.			85 Ft.			Load Radius in Feet
	Loaded Boom Angle (Deg.)	360°	Over Rear	Loaded Boom Angle (Deg.)	360°	Over Rear	Loaded Boom Angle (Deg.)	360°	Over Rear	
12	75.5	42,000	42,000							12
15	73.0	42,000	42,000	71.5	42,000	42,000	77.5	42,000	42,000	15
20	68.0	42,000	42,000	71.5	42,000	42,000	74.5	42,000	42,000	20
25	63.5	42,000	42,000	68.0	42,000	42,000	71.0	41,800	41,800	25
30	58.0	42,000	42,000	63.5	42,000	42,000	67.0	36,900	36,900	30
35	52.5	36,600	36,600	59.0	36,800	36,800	63.5	32,900	32,900	35
40	46.5	29,400	29,400	54.0	29,600	29,600	59.5	29,700	29,700	40
45	39.5	24,300	24,300	49.0	24,500	24,500	55.0	24,600	24,600	45
50	31.5	20,300	20,300	43.0	20,600	20,600	50.5	20,700	20,700	50
55	20.0	17,200	17,200	37.0	17,500	17,500	46.0	17,900	17,600	55
60				29.5	15,000	15,000	40.5	15,100	15,100	60
65				18.0	12,900	12,900	34.5	13,100	13,100	65
70							27.5	11,400	11,400	70
75							18.0	10,000	10,000	75
Min. Boom Angle/Cap.	0°	10,700	10,700	0°	8,100	8,100	0°	6,100	6,100	Min. Boom Angle/Cap.

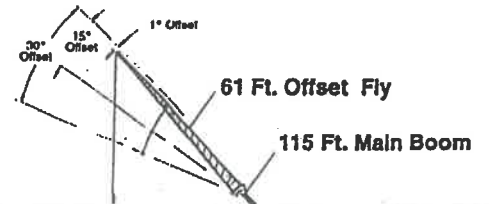
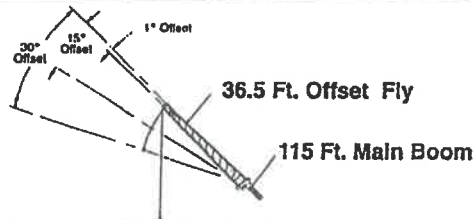
NOTE: Refer To Page 5 For "Lifting Capacity Deductions" For Capacity Reductions Caused By Stowed Or Erected Auxiliary Load Handling Equipment.

# Fully Extended Outriggers - Fly Capacities - Boom Mode "B" - 16,000 lb. Counterweight



BOOM MODE "B" 16,000# COUNTERWEIGHT		Maximum Allowable Lifting Capacities Rated Lifting Capacities in Pounds On Fully Extended Outriggers See Set Up Note 2.						95 Ft. Main Boom + 36.5 Ft. Offset Fly	
Load Radius In Feet	1° Offset		15° Offset		30° Offset		Load Radius In Feet	Min. Boom Angle/Cap.	
	Loaded Boom Angle (Deg.)	360°	Loaded Boom Angle (Deg.)	360°	Loaded Boom Angle (Deg.)	360°			
30	76.5	16,900					30		
35	74.0	15,700	77.5	11,900			35		
40	72.0	14,600	75.5	11,300			40		
45	70.0	13,700	73.5	10,700	77.0	8,700	45		
50	67.5	12,900	71.0	10,300	74.5	8,300	50		
55	65.0	12,100	68.5	9,800	72.0	8,000	55		
60	62.5	11,400	66.0	9,400	69.5	7,700	60		
65	60.0	10,800	63.5	9,000	67.0	7,400	65		
70	57.5	10,300	61.0	8,500	64.5	7,200	70		
75	55.0	9,800	58.5	8,100	61.5	6,800	75		
80	52.0	9,300	55.5	7,700	58.5	6,700	80		
85	49.0	8,800	52.5	7,400	55.5	6,600	85		
90	46.0	8,100	49.5	7,200	52.5	6,400	90		
95	42.5	7,200	46.0	6,800	49.0	6,300	95		
100	39.0	6,500	42.5	6,700	45.0	6,000	100		
105	35.0	5,800	38.5	6,000	41.0	6,000	105		
110	30.5	5,100	34.0	5,400	36.0	5,500	110		
115	25.0	4,600	28.5	4,800	30.0	4,800	115		
120	18.5	4,100	21.5	4,200			120		
Min. Boom Angle/Cap.	0°	1,700	0°	1,700	0°	1,800	Min. Boom Angle/Cap.		

BOOM MODE "B" 16,000# COUNTERWEIGHT		Maximum Allowable Lifting Capacities Rated Lifting Capacities in Pounds On Fully Extended Outriggers See Set Up Note 2.						95 Ft. Main Boom + 61 Ft. Offset Fly	
Load Radius In Feet	1° Offset		15° Offset		30° Offset		Load Radius In Feet	Min. Boom Angle/Cap.	
	Loaded Boom Angle (Deg.)	360°	Loaded Boom Angle (Deg.)	360°	Loaded Boom Angle (Deg.)	360°			
35	77.5	9,500					35		
40	75.5	9,500					40		
45	74.0	9,000					45		
50	72.0	8,400	77.0	8,200			50		
55	70.0	7,800	75.5	5,900			55		
60	68.0	7,300	73.5	5,600			60		
65	66.0	6,800	71.5	5,300	76.5	4,300	65		
70	64.0	6,300	69.5	5,000	74.5	4,100	70		
75	62.0	6,000	67.0	4,800	72.0	4,000	75		
80	60.0	5,600	65.0	4,600	70.0	3,800	80		
85	58.0	5,300	63.0	4,400	68.0	3,700	85		
90	55.5	5,000	60.5	4,200	65.5	3,600	90		
95	53.5	4,800	58.5	4,000	63.0	3,500	95		
100	51.0	4,500	56.0	3,800	60.5	3,400	100		
105	48.5	4,300	53.5	3,700	58.0	3,300	105		
110	45.5	4,100	50.5	3,600	55.0	3,200	110		
115	43.0	3,900	48.0	3,500	52.0	3,100	115		
120	40.0	3,700	45.0	3,300	49.0	3,100	120		
125	36.5	3,600	41.5	3,200	45.5	3,000	125		
130	33.0	3,400	38.0	3,200	41.5	3,000	130		
135	29.0	3,300	34.0	3,100	37.0	3,000	135		
140	24.5	3,000	29.0	3,000	31.0	3,000	140		
145	18.0	2,700	22.0	2,600			145		
Min. Boom Angle/Cap.	0°	700	0°	700	0°	800	Min. Boom Angle/Cap.		



BOOM MODE "B" 16,000# COUNTERWEIGHT		Maximum Allowable Lifting Capacities Rated Lifting Capacities in Pounds On Fully Extended Outriggers See Set Up Note 2.						115 Ft. Main Boom + 36.5 Ft. Offset Fly	
Load Radius In Feet	1° Offset		15° Offset		30° Offset		Load Radius In Feet	Min. Boom Angle/Cap.	
	Loaded Boom Angle (Deg.)	360°	Loaded Boom Angle (Deg.)	360°	Loaded Boom Angle (Deg.)	360°			
35	76.5	10,500					35		
40	75.0	10,500					40		
45	73.0	10,600	76.5	10,100			45		
50	71.5	10,500	75.0	10,100	78.0	8,700	50		
55	69.5	10,500	73.0	10,100	76.0	8,400	55		
60	67.5	10,500	71.0	10,100	74.0	8,100	60		
65	66.0	10,300	69.0	9,700	71.5	7,800	65		
70	63.5	9,600	67.0	9,300	69.5	7,600	70		
75	61.5	8,700	65.0	8,900	67.5	7,400	75		
80	59.0	8,100	62.5	8,200	65.0	7,100	80		
85	57.0	7,400	60.0	7,600	63.0	7,000	85		
90	54.5	6,800	57.5	7,000	60.5	6,800	90		
95	52.0	6,400	55.0	6,500	58.0	6,600	95		
100	49.0	5,900	52.5	6,000	55.5	6,100	100		
105	46.5	5,500	49.5	5,600	52.5	6,700	105		
110	43.5	4,900	47.0	5,200	49.5	5,200	110		
115	40.5	4,300	43.5	4,600	46.0	4,800	115		
120	37.0	3,800	40.0	4,100	42.5	4,200	120		
125	33.0	3,300	36.5	3,600	38.5	3,700	125		
130	29.0	2,900	32.0	3,100	33.5	3,200	130		
135	24.0	2,500	27.0	2,700	28.0	2,700	135		
140	17.5	2,200	20.5	2,300			140		
Min. Boom Angle/Cap.	0°	400	0°	500	0°	500	Min. Boom Angle/Cap.		

BOOM MODE "B" 16,000# COUNTERWEIGHT		Maximum Allowable Lifting Capacities Rated Lifting Capacities in Pounds On Fully Extended Outriggers See Set Up Note 2.						115 Ft. Main Boom + 61 Ft. Offset Fly	
Load Radius In Feet	1° Offset		15° Offset		30° Offset		Load Radius In Feet	Min. Boom Angle/Cap.	
	Loaded Boom Angle (Deg.)	360°	Loaded Boom Angle (Deg.)	360°	Loaded Boom Angle (Deg.)	360°			
40	77.5	7,100					40		
45	76.0	7,100					45		
50	74.5	7,100					50		
55	73.0	7,100					55		
60	71.5	7,100	76.5	6,000			60		
65	70.0	7,100	75.0	5,700			65		
70	68.5	7,100	73.0	6,400	77.5	4,300	70		
75	67.0	6,700	71.5	5,200	76.0	4,200	75		
80	65.5	6,300	69.5	4,900	74.0	4,000	80		
85	63.5	6,000	68.0	4,700	72.0	3,800	85		
90	62.0	5,700	66.0	4,500	70.5	3,600	90		
95	60.0	5,400	64.0	4,400	68.5	3,700	95		
100	58.0	5,100	62.5	4,200	66.5	3,600	100		
105	56.0	4,800	60.5	4,100	64.5	3,500	105		
110	53.5	4,400	58.0	3,900	62.0	3,400	110		
115	51.5	4,100	56.0	3,800	60.0	3,300	115		
120	49.0	3,700	54.0	3,700	57.5	3,200	120		
125	46.5	3,400	51.5	3,500	55.5	3,200	125		
130	44.0	3,100	49.0	3,200	52.5	3,100	130		
135	41.5	2,900	46.0	2,900	50.0	3,000	135		
140	38.5	2,600	43.0	2,700	46.5	2,700	140		
145	35.5	2,300	40.0	2,400	43.0	2,400	145		
150	32.0	2,000	36.5	2,200	39.5	2,100	150		
155	28.0	1,700	32.5	1,900	34.5	1,900	155		
160	23.5	1,400	28.0	1,600	28.5	1,600	160		
Min. Boom Angle/Cap.	0°	400	0°	500	0°	500	Min. Boom Angle/Cap.		

### WARNING

Do Not Lower 61 Ft. Offset Fly in Working Position Below 20 Degrees Unless Main Boom Length 108 Ft. Or Less, Since Loss Of Stability Will Occur Causing A Tipping Condition.

NOTE: Refer To Page 5 For "Lifting Capacity Deductions" For Capacity Reductions Caused By Stowed Or Erected Auxillary Load Handling Equipm

# ate Extended Outriggers - Main Boom Capacities - 4,000 lb. Counterweight

**Maximum Allowable Lifting Capacities**  
**Rated Lifting Capacities in Pounds**  
**On Intermediate Extended Outriggers**  
**See Set Up Note 2.**

**4,000# COUNTERWEIGHT**

**38 Fl. To 45 Fl. Main Boom**

Load Radius In Feet	38 Fl.		45 Fl.		Load Radius In Feet
	Loaded Boom Angle (Deg.)	360°	Loaded Boom Angle (Deg.)	360°	
10			71.0	87,400	10
12			68.5	87,400	12
15	58.5	62,100	64.0	61,000	15
20	48.5	33,800	56.5	33,000	20
25	36.5	21,400	48.0	20,800	25
30	17.5	14,400	38.0	13,900	30
35			24.5	9,500	35
Min. Boom Angle/Cap.	0°	13,200	0°	7,300	Min. Boom Angle/Cap.

**Maximum Allowable Lifting Capacities**  
**Rated Lifting Capacities in Pounds**  
**On Intermediate Extended Outriggers**  
**See Set Up Note 2.**

**4,000# COUNTERWEIGHT**

**55 Fl. To 63.6 Fl. Main Boom**

Load Radius In Feet	55 Fl.		63.6 Fl.		Load Radius In Feet
	Loaded Boom Angle (Deg.)	360°	Loaded Boom Angle (Deg.)	360°	
10	75.0	85,600			10
12	73.0	85,800	75.5	56,300	12
15	69.5	80,000	72.5	50,300	15
20	63.5	32,200	67.5	31,700	20
25	57.0	20,100	62.5	18,600	25
30	50.5	13,300	57.0	12,900	30
35	43.0	8,900	51.0	8,600	35
40	34.0	5,900	45.0	5,600	40
45	22.0	3,600	37.5	3,300	45
Min. Boom Angle/Cap.	0°	2,400	31°		Min. Boom Angle/Cap.

**Maximum Allowable Lifting Capacities**  
**Rated Lifting Capacities in Pounds**  
**On Intermediate Extended Outriggers**  
**See Set Up Note 2.**

**BOOM MODE "B"**  
**4,000# COUNTERWEIGHT**

**38 Fl. To 55 Fl. Main Boom**

Load Radius In Feet	38 Fl.		45 Fl.		55 Fl.		Load Radius In Feet
	Loaded Boom Angle (Deg.)	360°	Loaded Boom Angle (Deg.)	360°	Loaded Boom Angle (Deg.)	360°	
10			71.0	42,000	74.5	42,000	10
12			68.0	42,000	72.5	42,000	12
15	58.5	62,100	64.0	42,000	69.0	42,000	15
20	48.5	33,800	56.5	34,400	63.5	35,100	20
25	36.5	21,400	48.0	22,000	57.0	22,600	25
30	17.5	14,400	38.0	15,100	50.5	15,600	30
35			24.5	10,600	43.0	11,200	35
40					34.0	8,000	40
45					21.5	5,700	45
Min. Boom Angle/Cap.	0°	13,200	0°	8,500	0°	4,500	Min. Boom Angle/Cap.

**Maximum Allowable Lifting Capacities**  
**Rated Lifting Capacities in Pounds**  
**On Intermediate Extended Outriggers**  
**See Set Up Note 2.**

**BOOM MODE "B"**  
**4,000# COUNTERWEIGHT**

**95 Fl. To 115 Fl. Main Boom**

Load Radius In Feet	95 Fl.		105 Fl.		115 Fl.		Load Radius In Feet
	Loaded Boom Angle (Deg.)	360°	Loaded Boom Angle (Deg.)	360°	Loaded Boom Angle (Deg.)	360°	
20	76.5	36,100					20
25	73.0	23,600	75.0	23,700	77.0	23,700	25
30	69.5	18,500	72.0	18,800	74.0	18,800	30
35	66.0	12,100	68.5	12,200	71.0	12,200	35
40	62.5	8,900	65.5	9,000	68.0	9,100	40
45	59.0	6,600	62.5	6,700	65.5	6,800	45
50	55.0	4,800	59.0	4,900	62.5	5,000	50
55	51.0	3,400	56.0	3,500	59.5	3,600	55
60	47.0	2,300	52.5	2,400	56.5	2,500	60
Min. Boom Angle/Cap.	43.5°		40.5°		52.5°		Min. Boom Angle/Cap.

**65 Fl. To 85 Fl. Main Boom**

Load Radius In Feet	65 Fl.		75 Fl.		85 Fl.		Load Radius In Feet
	Loaded Boom Angle (Deg.)	360°	Loaded Boom Angle (Deg.)	360°	Loaded Boom Angle (Deg.)	360°	
12	75.5	42,000					12
15	73.0	42,000	75.5	42,000	77.5	42,000	15
20	68.0	35,500	71.5	35,700	74.0	35,900	20
25	63.0	23,000	67.0	23,200	70.5	23,400	25
30	57.5	15,900	62.5	16,200	66.5	16,400	30
35	52.0	11,500	58.0	11,800	62.5	11,900	35
40	46.0	8,400	53.5	8,600	58.5	8,800	40
45	39.0	6,100	48.0	6,300	54.5	6,500	45
50	31.0	4,300	42.5	4,500	50.0	4,700	50
55	20.0	2,900	36.5	3,100	45.0	3,300	55
60			29.0	2,000	40.0	2,200	60
Min. Boom Angle/Cap.	0°	2,100	27.5°		37°		Min. Boom Angle/Cap.

NOTE: Refer To Page 5 For "Lifting Capacity Deductions" For Capacity Reductions Caused By Stowed Or Erected Auxiliary Load Handling Equipment.

# Extended Outriggers - Main Boom Capacities - 8,000 lb. Counterweight

**Maximum Allowable Lifting Capacities  
Rated Lifting Capacities in Pounds  
On Intermediate Extended Outriggers  
See Set Up Note 2.**

**38 Ft. To 45 Ft. Main Boom**

Load Radius In Feet	38 Ft.		45 Ft.		Load Radius In Feet
	Loaded Boom Angle (Deg.)	360°	Loaded Boom Angle (Deg.)	360°	
10			71.0	87,400	10
12			68.5	87,400	12
15	58.5	70,300	64.0	69,200	15
20	48.5	38,800	56.5	36,000	20
25	36.5	25,000	48.0	24,400	25
30	17.5	17,200	38.0	16,700	30
35			24.5	11,800	35
Min. Boom Angle/Cap.	0°	15,900	0°	9,400	Min. Boom Angle/Cap.

**Maximum Allowable Lifting Capacities  
Rated Lifting Capacities in Pounds  
On Intermediate Extended Outriggers  
See Set Up Note 2.**

**55 Ft. To 63.6 Ft. Main Boom**

Load Radius In Feet	55 Ft.		63.6 Ft.		Load Radius In Feet
	Loaded Boom Angle (Deg.)	360°	Loaded Boom Angle (Deg.)	360°	
10	75.0	85,600			10
12	73.0	85,600	75.5	66,300	12
15	69.5	68,200	73.0	66,300	15
20	63.5	37,200	67.5	36,700	20
25	57.0	23,700	62.5	23,300	25
30	50.5	16,100	57.0	15,700	30
35	43.0	11,200	51.0	10,900	35
40	34.0	7,800	45.0	7,500	40
45	22.0	5,300	37.5	5,000	45
50			29.0	3,100	50
Min. Boom Angle/Cap.	0°	4,000	19.5°		Min. Boom Angle/Cap.

**BOOM MODE "B"  
8,000# COUNTERWEIGHT**

**Maximum Allowable Lifting Capacities  
Rated Lifting Capacities in Pounds  
On Intermediate Extended Outriggers  
See Set Up Note 2.**

**38 Ft. To 55 Ft. Main Boom**

Load Radius In Feet	38 Ft.		45 Ft.		55 Ft.		Load Radius In Feet
	Loaded Boom Angle (Deg.)	360°	Loaded Boom Angle (Deg.)	360°	Loaded Boom Angle (Deg.)	360°	
10			71.0	42,000	74.5	42,000	10
12			68.0	42,000	72.5	42,000	12
15	58.5	70,300	64.0	42,000	69.0	42,000	15
20	48.5	38,800	56.5	38,400	63.5	40,000	20
25	36.5	25,000	48.0	25,700	57.0	26,200	25
30	17.5	17,200	38.0	17,900	50.5	18,400	30
35			24.5	12,900	43.0	13,400	35
40					34.0	10,000	40
45					22.0	7,400	45
Min. Boom Angle/Cap.	0°	15,900	0°	10,600	0°	6,100	Min. Boom Angle/Cap.

**BOOM MODE "B"  
8,000# COUNTERWEIGHT**

**Maximum Allowable Lifting Capacities  
Rated Lifting Capacities in Pounds  
On Intermediate Extended Outriggers  
See Set Up Note 2.**

**95 Ft. To 115 Ft. Main Boom**

Load Radius In Feet	95 Ft.		105 Ft.		115 Ft.		Load Radius In Feet
	Loaded Boom Angle (Deg.)	360°	Loaded Boom Angle (Deg.)	360°	Loaded Boom Angle (Deg.)	360°	
20	76.5	38,800					20
25	73.0	27,100	75.0	27,100	77.0	24,500	25
30	69.5	19,300	72.0	19,400	74.0	19,500	30
35	66.0	14,300	69.0	14,300	71.0	14,400	35
40	62.5	10,900	65.5	11,000	68.5	11,000	40
45	59.0	8,200	62.5	8,400	65.5	8,500	45
50	55.0	6,300	59.5	6,400	62.5	6,500	50
55	51.5	4,800	56.0	4,900	59.5	4,900	55
60	47.0	3,500	52.5	3,600	56.5	3,700	60
65	42.5	2,500	48.5	2,600	53.5	2,600	65
Min. Boom Angle/Cap.	37.5°		43.5°		48°		Min. Boom Angle/Cap.

**65 Ft. To 85 Ft. Main Boom**

Load Radius In Feet	65 Ft.		75 Ft.		85 Ft.		Load Radius In Feet
	Loaded Boom Angle (Deg.)	360°	Loaded Boom Angle (Deg.)	360°	Loaded Boom Angle (Deg.)	360°	
12	75.5	42,000					12
15	73.0	42,000	75.5	42,000	77.5	42,000	15
20	68.0	40,400	71.5	40,700	74.0	40,900	20
25	63.0	28,500	67.0	26,800	70.5	26,900	25
30	57.5	18,800	62.5	19,000	66.5	19,200	30
35	52.0	13,800	58.0	14,000	62.5	14,100	35
40	46.0	10,300	53.5	10,600	58.5	10,700	40
45	39.0	7,800	48.5	8,000	54.5	8,200	45
50	31.0	5,800	42.5	6,000	50.0	6,200	50
55	20.0	4,200	36.5	4,500	45.0	4,600	55
60			29.0	3,200	40.0	3,400	60
65			18.5	2,200	34.0	2,300	65
Min. Boom Angle/Cap.	0°	3,400	13°		20°		Min. Boom Angle/Cap.

NOTE: Refer To Page 5 For "Lifting Capacity Deductions" For Capacity Reductions Caused By Stowed Or Erected Auxiliary Load Handling Equipment.

# ate Extended Outriggers - Main Boom Capacities - 12,000 lb. Counterweight

**Maximum Allowable Lifting Capacities**  
**Rated Lifting Capacities in Pounds**  
**On Intermediate Extended Outriggers**  
**See Set Up Note 2.**

**12,000# COUNTERWEIGHT**

**38 Fl. To 45 Fl. Main Boom**

Load Radius In Feet	38 Fl.		45 Fl.		Load Radius In Feet
	Loaded Boom Angle (Deg.)	360°	Loaded Boom Angle (Deg.)	360°	
10			71.0	87,400	10
12			68.5	87,400	12
15	58.5	78,500	64.0	77,500	15
20	48.5	43,800	56.5	43,000	20
25	38.5	28,800	48.0	27,900	25
30	17.5	20,000	38.0	19,500	30
35			24.5	14,000	35
Min. Boom Angle/Cap.	0°	18,600	0°	11,500	Min. Boom Angle/Cap.

**Maximum Allowable Lifting Capacities**  
**Rated Lifting Capacities in Pounds**  
**On Intermediate Extended Outriggers**  
**See Set Up Note 2.**

**12,000# COUNTERWEIGHT**

**55 Fl. To 63.6 Fl. Main Boom**

Load Radius In Feet	55 Fl.		63.6 Fl.		Load Radius In Feet
	Loaded Boom Angle (Deg.)	360°	Loaded Boom Angle (Deg.)	360°	
10	75.0	85,600			10
12	73.0	85,600	75.5	56,300	12
15	69.5	78,500	73.0	56,300	15
20	63.5	42,200	67.5	41,600	20
25	57.0	27,200	62.5	26,800	25
30	50.5	18,900	57.0	18,500	30
35	43.0	13,500	51.0	13,100	35
40	34.0	9,800	45.0	9,500	40
45	22.0	7,000	37.5	6,700	45
50			29.0	4,800	50
55			15.5	2,900	55
Min. Boom Angle/Cap.	0°	5,600	0°	2,400	Min. Boom Angle/Cap.

**Maximum Allowable Lifting Capacities**  
**Rated Lifting Capacities in Pounds**  
**On Intermediate Extended Outriggers**  
**See Set Up Note 2.**

**BOOM MODE "B"**  
**12,000# COUNTERWEIGHT**

**38 Fl. To 55 Fl. Main Boom**

Load Radius In Feet	38 Fl.		45 Fl.		55 Fl.		Load Radius In Feet
	Loaded Boom Angle (Deg.)	360°	Loaded Boom Angle (Deg.)	360°	Loaded Boom Angle (Deg.)	360°	
10			71.0	42,000	74.5	42,000	10
12			68.0	42,000	72.5	42,000	12
15	58.5	78,500	64.0	42,000	68.0	42,000	15
20	48.5	43,800	56.5	42,000	63.5	42,000	20
25	38.5	28,800	48.0	29,200	57.0	29,800	25
30	17.5	20,000	38.0	20,700	50.5	21,200	30
35			24.5	15,200	43.0	15,700	35
40					34.0	11,900	40
45					22.0	8,100	45
Min. Boom Angle/Cap.	0°	18,600	0°	12,800	0°	7,700	Min. Boom Angle/Cap.

**Maximum Allowable Lifting Capacities**  
**Rated Lifting Capacities in Pounds**  
**On Intermediate Extended Outriggers**  
**See Set Up Note 2.**

**BOOM MODE "B"**  
**12,000# COUNTERWEIGHT**

**95 Fl. To 115 Fl. Main Boom**

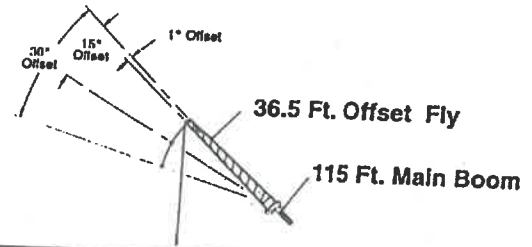
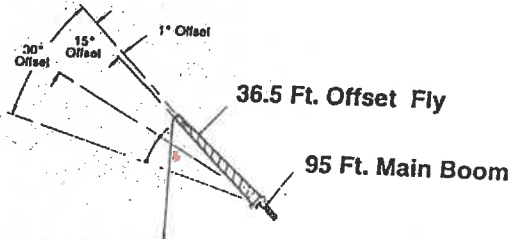
Load Radius In Feet	95 Fl.		105 Fl.		115 Fl.		Load Radius In Feet
	Loaded Boom Angle (Deg.)	360°	Loaded Boom Angle (Deg.)	360°	Loaded Boom Angle (Deg.)	360°	
20	78.5	38,800					20
25	73.0	30,700	75.5	30,300	77.0	24,500	25
30	69.5	22,100	72.0	22,200	74.5	22,300	30
35	66.0	16,600	69.0	16,700	71.5	16,700	35
40	62.5	12,700	66.0	12,800	68.5	12,900	40
45	59.0	10,000	62.5	10,100	65.5	10,200	45
50	55.5	7,800	59.5	7,900	62.5	8,000	50
55	51.5	6,100	56.0	6,200	59.5	6,300	55
60	47.5	4,700	52.5	4,800	56.5	4,900	60
65	43.0	3,800	49.0	3,700	53.5	3,700	65
70	38.0	2,800	45.0	2,700	50.0	2,800	70
75			40.5	1,900	46.5	1,900	75
Min. Boom Angle/Cap.	30°		37.5°		43°		Min. Boom Angle/Cap.

**65 Fl. To 85 Fl. Main Boom**

Load Radius In Feet	65 Fl.		75 Fl.		85 Fl.		Load Radius In Feet
	Loaded Boom Angle (Deg.)	360°	Loaded Boom Angle (Deg.)	360°	Loaded Boom Angle (Deg.)	360°	
12	75.5	42,000					12
15	73.0	42,000	75.5	42,000	77.5	42,000	15
20	68.0	42,000	71.5	42,000	74.5	42,000	20
25	63.0	30,100	67.0	30,400	70.5	30,500	25
30	57.5	21,600	63.0	21,800	66.5	22,000	30
35	52.0	16,100	58.0	16,300	62.5	16,400	35
40	46.0	12,300	53.5	12,500	58.5	12,700	40
45	39.0	9,500	48.5	9,700	54.5	9,900	45
50	31.0	7,300	42.5	7,500	50.0	7,700	50
55	20.0	5,600	36.5	5,800	45.5	6,000	55
60			29.0	4,400	40.0	4,600	60
65			18.5	3,300	34.0	3,400	65
70					27.0	2,500	70
Min. Boom Angle/Cap.	0°	4,700	0°	2,600	17.5°		Min. Boom Angle/Cap.

NOTE: Refer To Page 5 For "Lifting Capacity Deductions" For Capacity Reductions Caused By Stowed Or Erected Auxiliary Load Handling Equipment.

ate Extended Outriggers - Fly Capacities - Boom Mode "B" - 12,000 lb. Counterweight



**BOOM MODE "B"**  
12,000# COUNTERWEIGHT

Maximum Allowable Lifting Capacities  
Rated Lifting Capacities in Pounds  
On Intermediate Extended Outriggers  
See Set Up Note 2.

95 Ft. Main Boom + 36.5 Ft. Offset Fly

Load Radius in Feet	1° Offset		15° Offset		30° Offset		Load Radius in Feet
	Loaded Boom Angle (Deg.)	360°	Loaded Boom Angle (Deg.)	360°	Loaded Boom Angle (Deg.)	360°	
30	76.5	18,900					30
35	74.0	15,700					35
40	72.0	14,300	77.5	11,900			40
45	69.5	11,600	75.5	11,300			45
50	67.0	9,400	73.5	10,700	77.0	8,700	50
55	64.0	7,600	71.0	10,300	74.5	8,300	55
60	61.5	6,200	68.5	8,600	72.0	8,000	60
65	59.0	5,000	65.5	7,100	69.5	7,700	65
70	56.0	4,000	63.0	5,800	66.5	6,600	70
75	53.5	3,200	60.0	4,700	64.0	5,400	75
80	50.5	2,400	57.0	3,800	61.0	4,400	80
85	47.5	1,800	54.5	3,000	57.5	3,500	85
90			51.0	2,300	54.5	2,800	90
95			48.0	1,700	51.0	2,100	95
					47.5	1,500	95

**WARNING**  
Do Not Lower 36.5 Ft. Offset Fly in Working Position Below 42 Degrees Unless Main Boom Length is Or Less, Since Loss of Stability Will Occur Causing A Tipping Condition.

**BOOM MODE "B"**  
12,000# COUNTERWEIGHT

Maximum Allowable Lifting Capacities  
Rated Lifting Capacities in Pounds  
On Intermediate Extended Outriggers  
See Set Up Note 2.

115 Ft. Main Boom + 36.5 Ft. Offset Fly

Load Radius in Feet	1° Offset		15° Offset		30° Offset		Load Radius in Feet
	Loaded Boom Angle (Deg.)	360°	Loaded Boom Angle (Deg.)	360°	Loaded Boom Angle (Deg.)	360°	
35	76.5	10,600					35
40	75.0	10,600					40
45	73.0	10,500					45
50	71.0	9,900	76.5	10,100			50
55	68.5	7,300	75.0	10,100	76.0	8,700	55
60	66.5	5,900	72.5	8,400	76.0	8,400	60
65	64.0	4,700	70.0	8,900	73.5	7,800	65
70	62.0	3,700	68.0	5,600	71.5	6,400	70
75	59.5	2,900	65.5	4,500	69.0	5,500	75
80	57.0	2,100	63.0	3,600	66.5	4,300	80
85	54.5	1,500	60.5	2,800	64.0	3,400	85
90			58.0	2,100	61.0	2,800	90
95			55.5	1,500	58.5	2,000	95
					55.5	1,400	95

**WARNING**  
Do Not Lower 36.5 Ft. Offset Fly in Working Position Below 51.5 Degrees Unless Main Boom Length is 59 Ft. Or Less, Since Loss of Stability Will Occur Causing A Tipping Condition.  
This capacity based on maximum obtainable boom angle.