

## Complete Measurements



VIEW 3D MODEL



## Complete Measurements

## SUMMARY

Areas	Siding	Other
Facades	2336 ft <sup>2</sup>	100 ft <sup>2</sup>
Openings	843 ft <sup>2</sup>	-
Trims*	207 ft <sup>2</sup>	1 ft <sup>2</sup>
Unknown (no photos)*	-	-
Total	3386 ft <sup>2</sup>	101 ft <sup>2</sup>

\*Any trim or unknown material that touches siding is included in the 'Siding' column. If it does not touch siding, then it's included in the 'Other' column.

Openings	Siding	Other
Quantity	48	0
Tops Length	134' 4"	-
Sills Length	111'	-
Sides Length	287' 2"	-
Total Perimeter	532' 6"	-

Corners	Siding	Other
Inside Qty	19	0
Inside Length	104' 10"	-
Outside Qty	17	12
Outside Length	125' 9"	105' 5"

Accessories	Siding	Other
Shutter Qty	0	0
Shutter Area	0 ft <sup>2</sup>	0 ft <sup>2</sup>
Vents Qty	1	0
Vents Area	3 ft <sup>2</sup>	0 ft <sup>2</sup>

Trim	Siding	Other
Level Starter	302' 3"	11' 7"
Sloped Trim	54'	-
Vertical Trim	18' 10"	-

Roofline	Length	Avg. Depth	Soffit Area
Eaves Fascia	161'	-	-
Level Frieze Board	232' 3"	1'	197 ft <sup>2</sup>
Rakes Fascia	138' 9"	-	-
Sloped Frieze Board	123' 6"	10"	67 ft <sup>2</sup>

### SIDING WASTE TOTALS

Siding & Trim Only*	Area	Squares
Zero Waste	2516 ft <sup>2</sup>	25¼
+10%	2769 ft <sup>2</sup>	27¾
+18%	2966 ft <sup>2</sup>	29¾

+ Openings < 20ft <sup>2</sup>	Area	Squares
Zero Waste	2922 ft <sup>2</sup>	29¼
+10%	3215 ft <sup>2</sup>	32¼
+18%	3448 ft <sup>2</sup>	34½

+ Openings < 33ft <sup>2</sup>	Area	Squares
Zero Waste	3019 ft <sup>2</sup>	30¼
+10%	3322 ft <sup>2</sup>	33¼
+18%	3562 ft <sup>2</sup>	35¾

\*The first three rows of the Siding Waste Factor table are calculated using the total ft<sup>2</sup> of siding facades, ft<sup>2</sup> of trim touching siding, and ft<sup>2</sup> of unknowns touching siding.

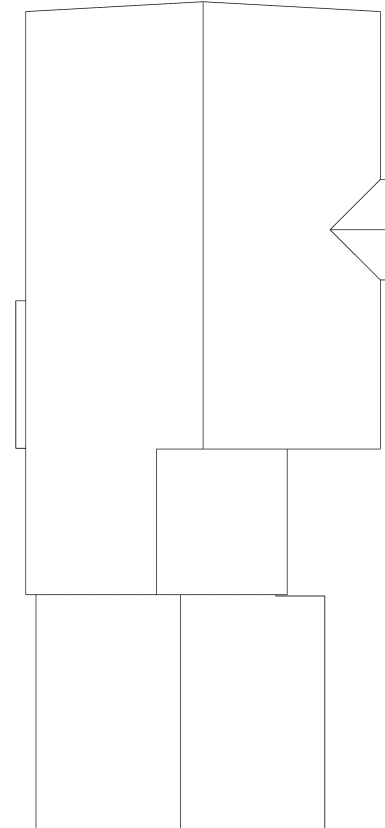


## Complete Measurements

## ROOF SUMMARY

Roof	Area	Total	Length
Roof Facets	2665 ft <sup>2</sup>	8	-
Ridges / Hips	-	4	84' 1"
Valleys	-	2	14' 2"
Rakes	-	14	138' 9"
Eaves	-	9	161'
Flashing	-	5	13' 10"
Step Flashing	-	10	43' 7"
Drip Edge/Perimeter	-	-	299' 8"

Roof Pitch*	Area	Percentage
6 / 12	2600 ft <sup>2</sup>	97.56%
8 / 12	65 ft <sup>2</sup>	2.44%

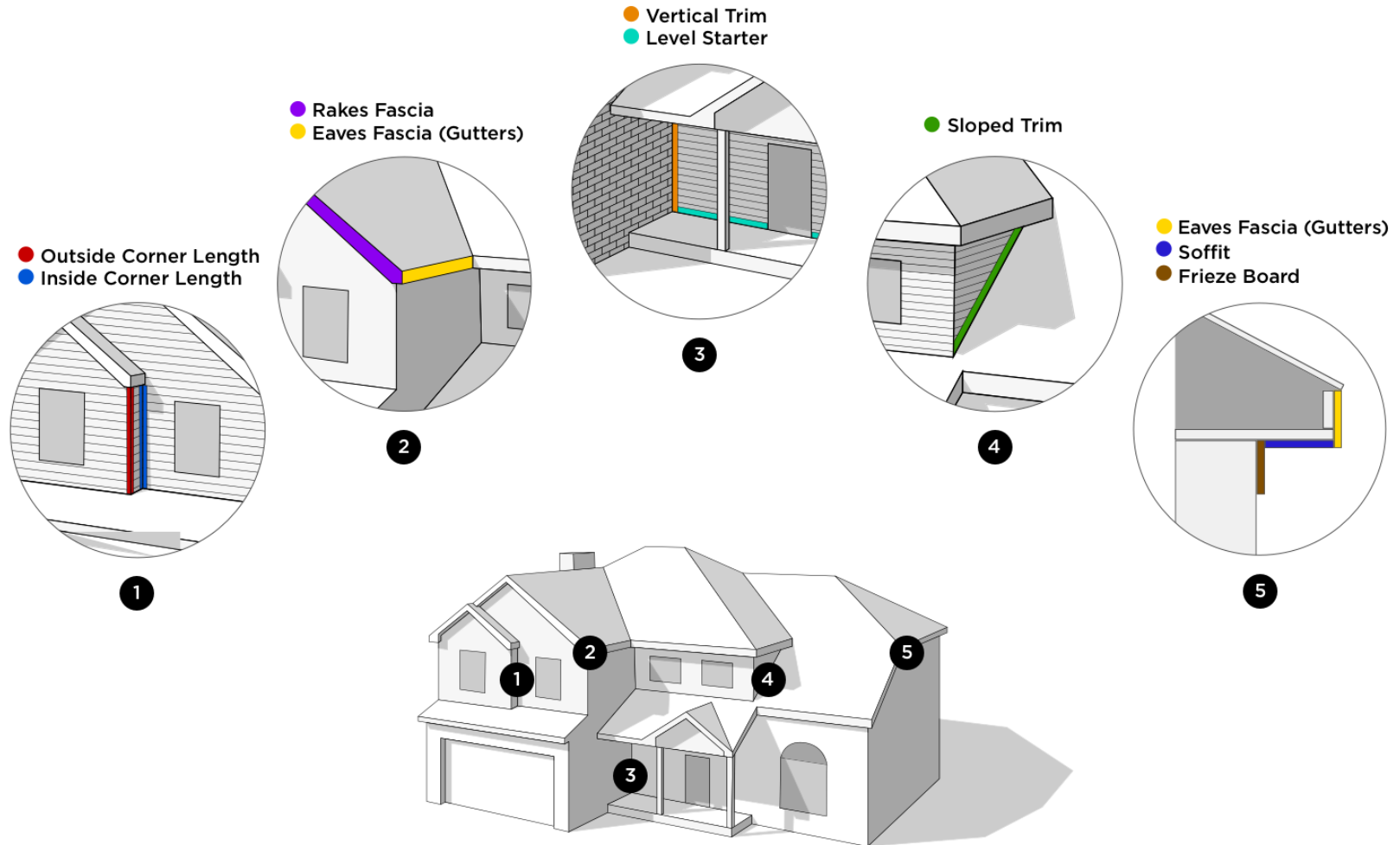


### Example Waste Factor Calculations

	Zero Waste	+5%	+10%	+15%	+20%
<b>Area</b>	2665 ft <sup>2</sup>	2798 ft <sup>2</sup>	2932 ft <sup>2</sup>	3065 ft <sup>2</sup>	3198 ft <sup>2</sup>
<b>Squares</b>	26 <sup>2</sup> / <sub>3</sub>	28	29 <sup>1</sup> / <sub>3</sub>	30 <sup>2</sup> / <sub>3</sub>	32

The table above provides the total roof area of a given property using waste percentages as noted. Please consider that area values and specific waste factors can be influenced by the size and complexity of the property, captured image quality, specific roofing techniques, and your own level of expertise. Additional square footage for Hip, Ridge, and Starter shingles are not included in this waste factor and will require additional materials. This table is only intended to make common waste calculations easier and should not be interpreted as recommendations.

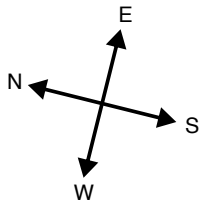
## Complete Measurements





## Complete Measurements

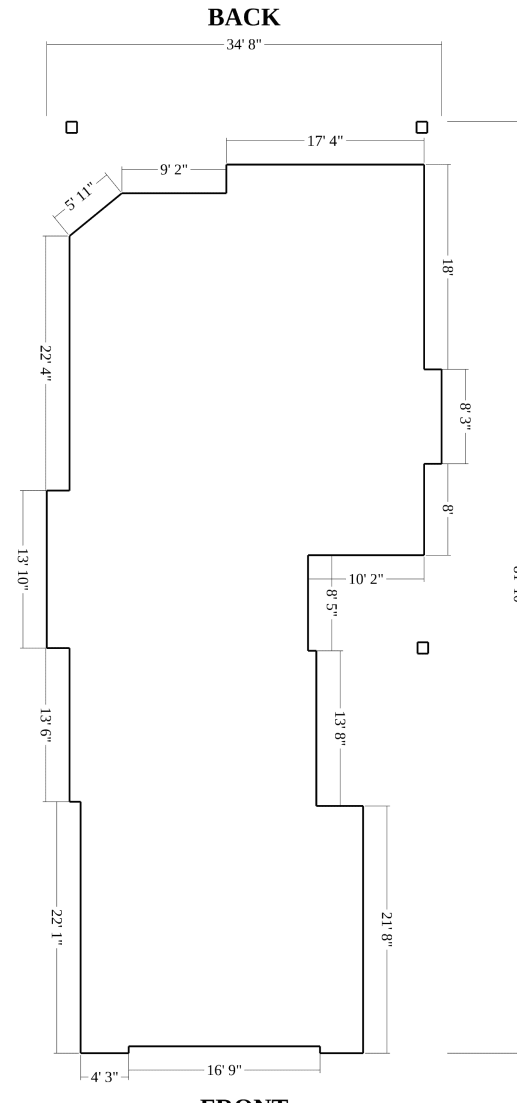
## FOOTPRINT



Number of Stories: 1

Footprint Perimeter: 245' 4"

Footprint Area: 2065 ft<sup>2</sup>



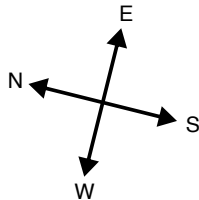


## Complete Measurements

## SIDING PER ELEVATION



Number of Stories: 1



### Siding Per Elevation

FRONT			RIGHT			LEFT			BACK		
SI-1	-	154 ft <sup>2</sup>	SI-3	-	171 ft <sup>2</sup>	SI-31	-	141 ft <sup>2</sup>	SI-20	-	37 ft <sup>2</sup>
SI-2	-	6 ft <sup>2</sup>	SI-6	-	109 ft <sup>2</sup>	SI-32	-	158 ft <sup>2</sup>	SI-21	-	6 ft <sup>2</sup>
SI-4	-	136 ft <sup>2</sup>	SI-7	-	73 ft <sup>2</sup>	SI-33	-	39 ft <sup>2</sup>	SI-22	-	8 ft <sup>2</sup>
SI-5	-	14 ft <sup>2</sup>	SI-8	-	15 ft <sup>2</sup>	SI-34	-	96 ft <sup>2</sup>	SI-23	-	11 ft <sup>2</sup>
SI-9	-	112 ft <sup>2</sup>	SI-12	-	93 ft <sup>2</sup>	SI-35	-	93 ft <sup>2</sup>	SI-24	-	14 ft <sup>2</sup>
SI-10	-	8 ft <sup>2</sup>	SI-13	-	58 ft <sup>2</sup>	SI-36	-	74 ft <sup>2</sup>	SI-25	-	8 ft <sup>2</sup>
SI-11	-	74 ft <sup>2</sup>	SI-16	-	48 ft <sup>2</sup>	SI-37	-	152 ft <sup>2</sup>	SI-26	-	17 ft <sup>2</sup>
SI-14	-	11 ft <sup>2</sup>	SI-17	-	37 ft <sup>2</sup>	SI-41*	-	1 ft <sup>2</sup>	SI-27	-	20 ft <sup>2</sup>
SI-15	-	8 ft <sup>2</sup>	SI-18	-	85 ft <sup>2</sup>				SI-28	-	29 ft <sup>2</sup>
SI-39*	-	1 ft <sup>2</sup>	SI-19	-	85 ft <sup>2</sup>				SI-29	-	110 ft <sup>2</sup>
			SI-40*	-	1 ft <sup>2</sup>				SI-30	-	22 ft <sup>2</sup>
									SI-38*	-	1 ft <sup>2</sup>
<b>524 ft<sup>2</sup></b>			<b>775 ft<sup>2</sup></b>			<b>754 ft<sup>2</sup></b>			<b>283 ft<sup>2</sup></b>		

\* Facet is not visible due to size or location

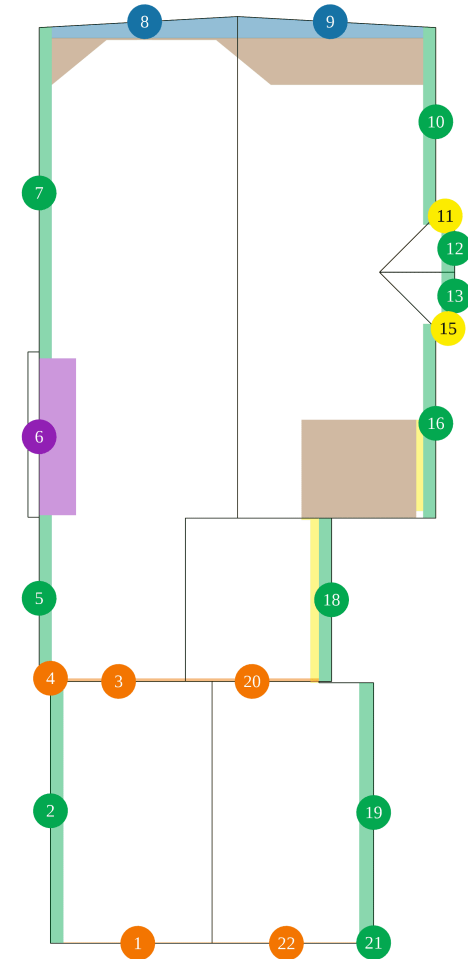


## Complete Measurements

SOFFIT

### Soffit Summary

Depth	Type	Count	Total Length	Total Area
1" - 6"	rakes	4	52' 10"	9 ft <sup>2</sup>
	eaves	2	6"	0 ft <sup>2</sup>
6" - 12"	eaves	3	16' 6"	12 ft <sup>2</sup>
	-	2	7' 10"	5 ft <sup>2</sup>
12" - 18"	rakes	2	8' 10"	10 ft <sup>2</sup>
	eaves	8	132' 1"	144 ft <sup>2</sup>
18" - 24"	rakes	2	34' 8"	48 ft <sup>2</sup>
24" - 48"	eaves	1	13' 1"	41 ft <sup>2</sup>
> 48"	-	4	16' 4"	150 ft <sup>2</sup>
<b>Totals</b>			<b>282' 8"</b>	<b>418 ft<sup>2</sup></b>





## Complete Measurements

SOFFIT

### Soffit Breakdown

	num	Type	Depth	Length	Area	Pitch
●	1	rake	1"	13' 11"	1 ft <sup>2</sup>	6 / 12
●	2	eave	13"	22' 2"	24 ft <sup>2</sup>	6 / 12
●	3	rake	3"	12' 6"	3 ft <sup>2</sup>	6 / 12
●	4	eave	1"	-	0 ft <sup>2</sup>	6 / 12
●	5	eave	13"	13' 11"	15 ft <sup>2</sup>	6 / 12
●	6	eave	37"	13' 1"	41 ft <sup>2</sup>	6 / 12
●	7	eave	13"	27' 9"	29 ft <sup>2</sup>	6 / 12
●	8	rake	22"	17' 4"	24 ft <sup>2</sup>	6 / 12
●	9	rake	22"	17' 4"	24 ft <sup>2</sup>	6 / 12
●	10	eave	13"	16' 7"	18 ft <sup>2</sup>	6 / 12
●	11	eave	9"	1' 7"	1 ft <sup>2</sup>	6 / 12
●	12	rake	13"	4' 5"	5 ft <sup>2</sup>	6 / 12
●	13	rake	13"	4' 5"	5 ft <sup>2</sup>	6 / 12
○	14	eave	5"	6"	0 ft <sup>2</sup>	6 / 12
●	15	eave	9"	1' 1"	1 ft <sup>2</sup>	6 / 12
●	16	eave	13"	16' 3"	17 ft <sup>2</sup>	6 / 12
○	17	eave	9"	13' 9"	10 ft <sup>2</sup>	6 / 12
●	18	eave	13"	13' 8"	15 ft <sup>2</sup>	6 / 12
●	19	eave	14"	21' 8"	26 ft <sup>2</sup>	6 / 12

○ Feature is too small to label on the plan diagram

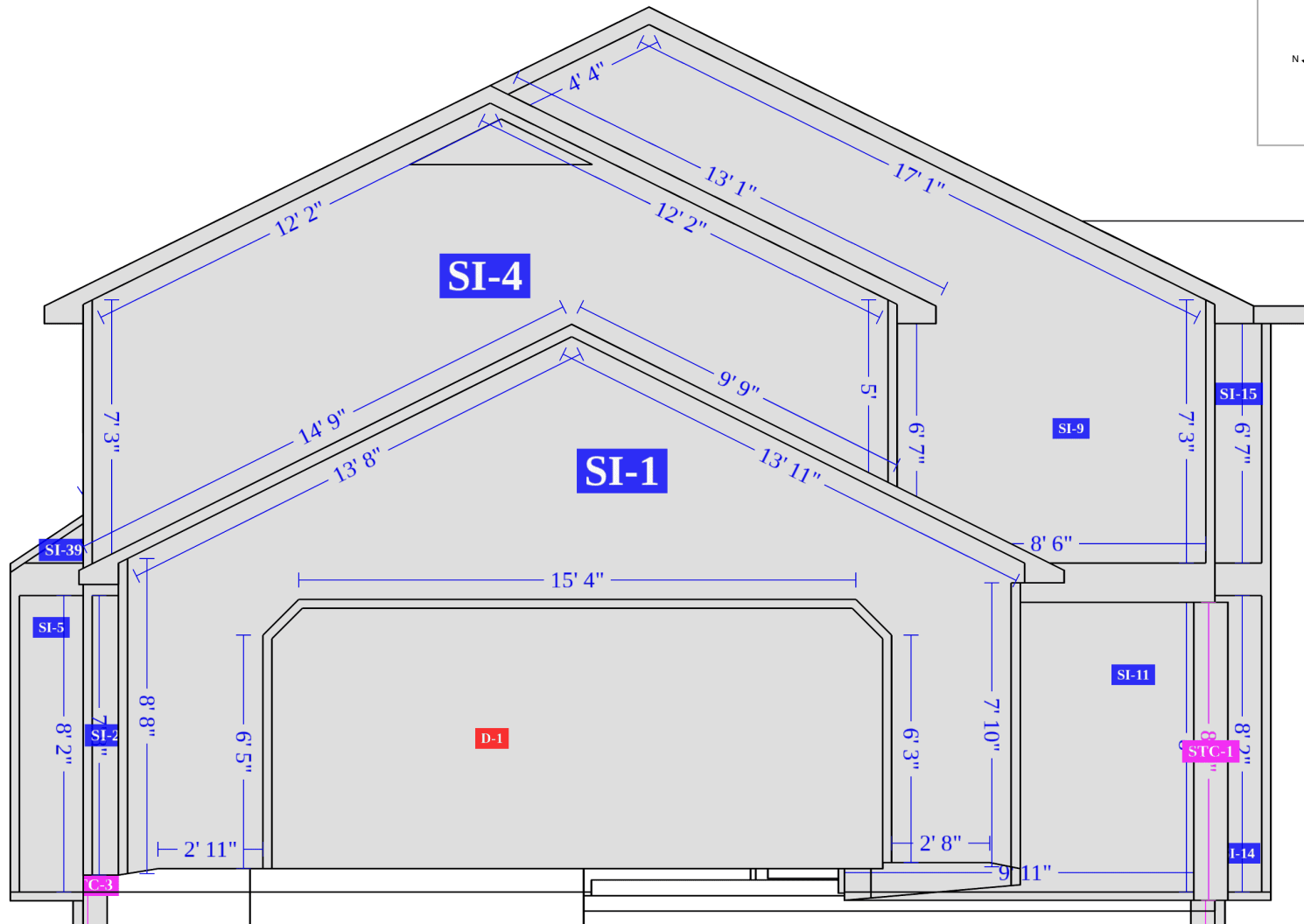
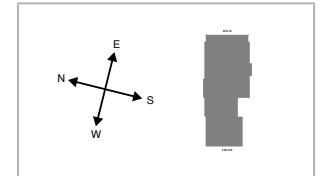
	num	Type	Depth	Length	Area	Pitch
●	20	rake	3"	12' 6"	3 ft <sup>2</sup>	6 / 12
●	21	eave	13"	1"	0 ft <sup>2</sup>	6 / 12
●	22	rake	1"	13' 11"	1 ft <sup>2</sup>	6 / 12
○	23	-	55"	3' 11"	9 ft <sup>2</sup>	6 / 12
○	24	-	110"	2"	2 ft <sup>2</sup>	6 / 12
○	25	-	208"	3' 11"	60 ft <sup>2</sup>	6 / 12
○	26	-	7"	7' 8"	4 ft <sup>2</sup>	6 / 12
○	27	-	115"	8' 3"	79 ft <sup>2</sup>	6 / 12
○	28	-	9"	2"	0 ft <sup>2</sup>	6 / 12

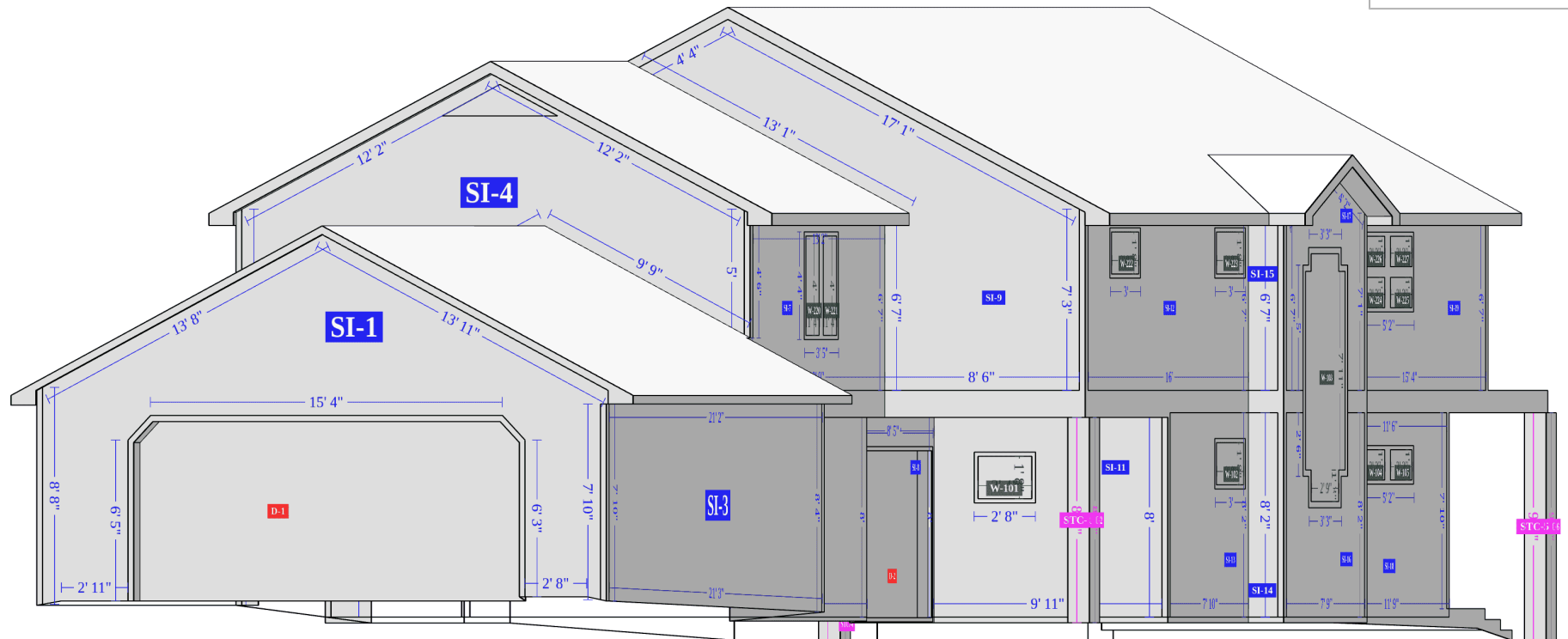


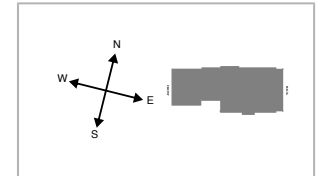


## Complete Measurements

FRONT

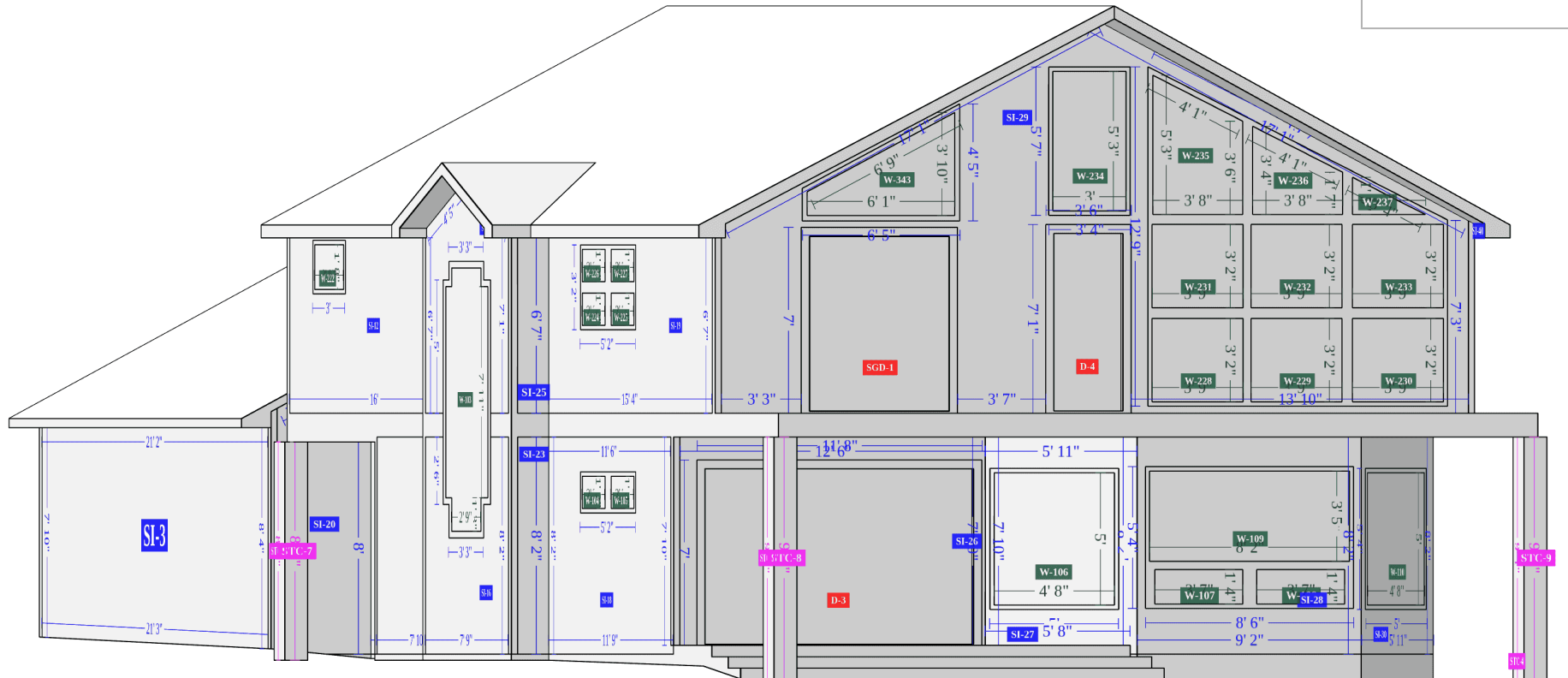
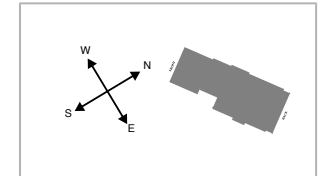






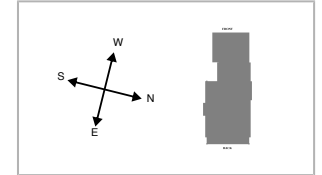
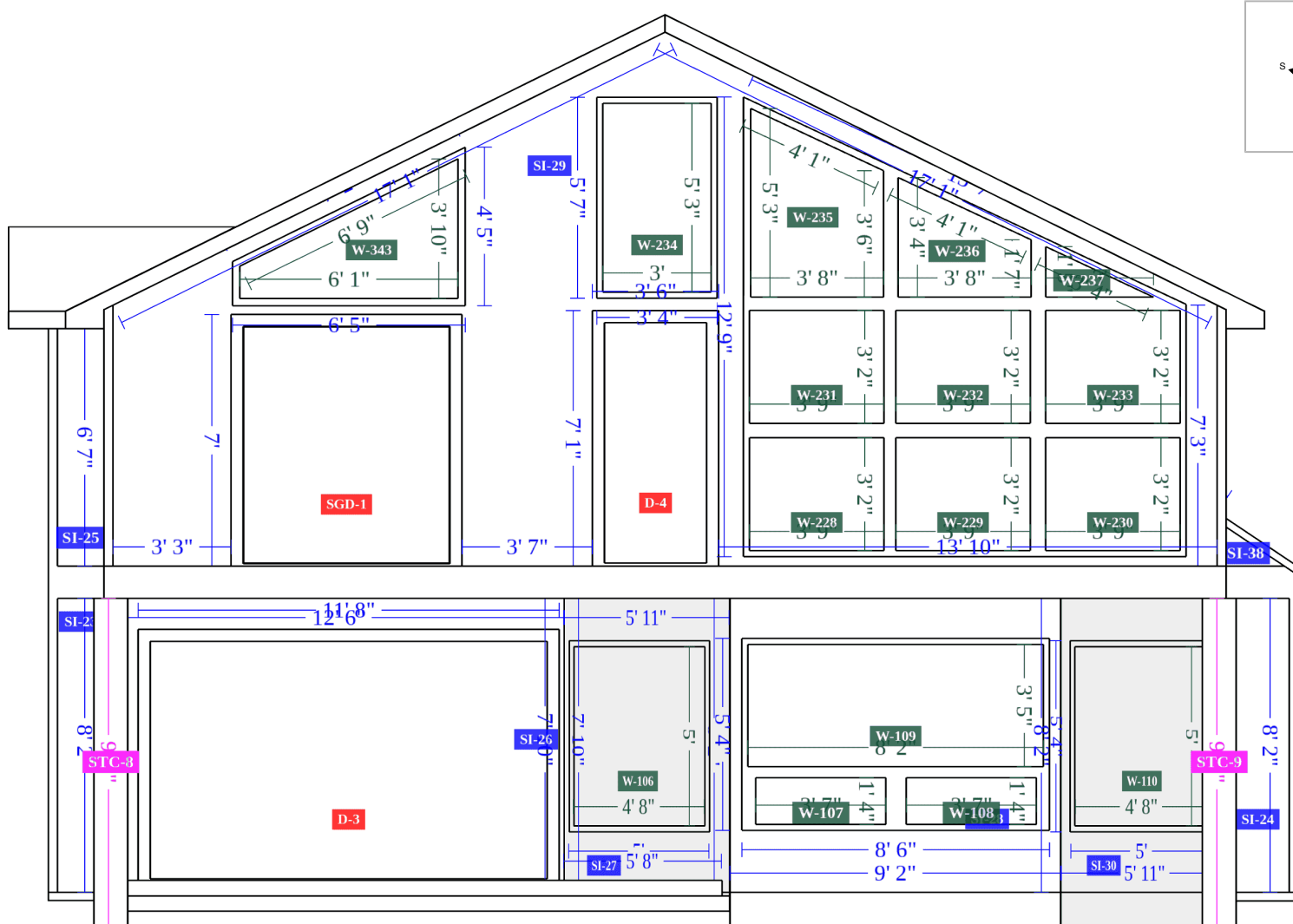
## Complete Measurements

RIGHT-BACK



## Complete Measurements

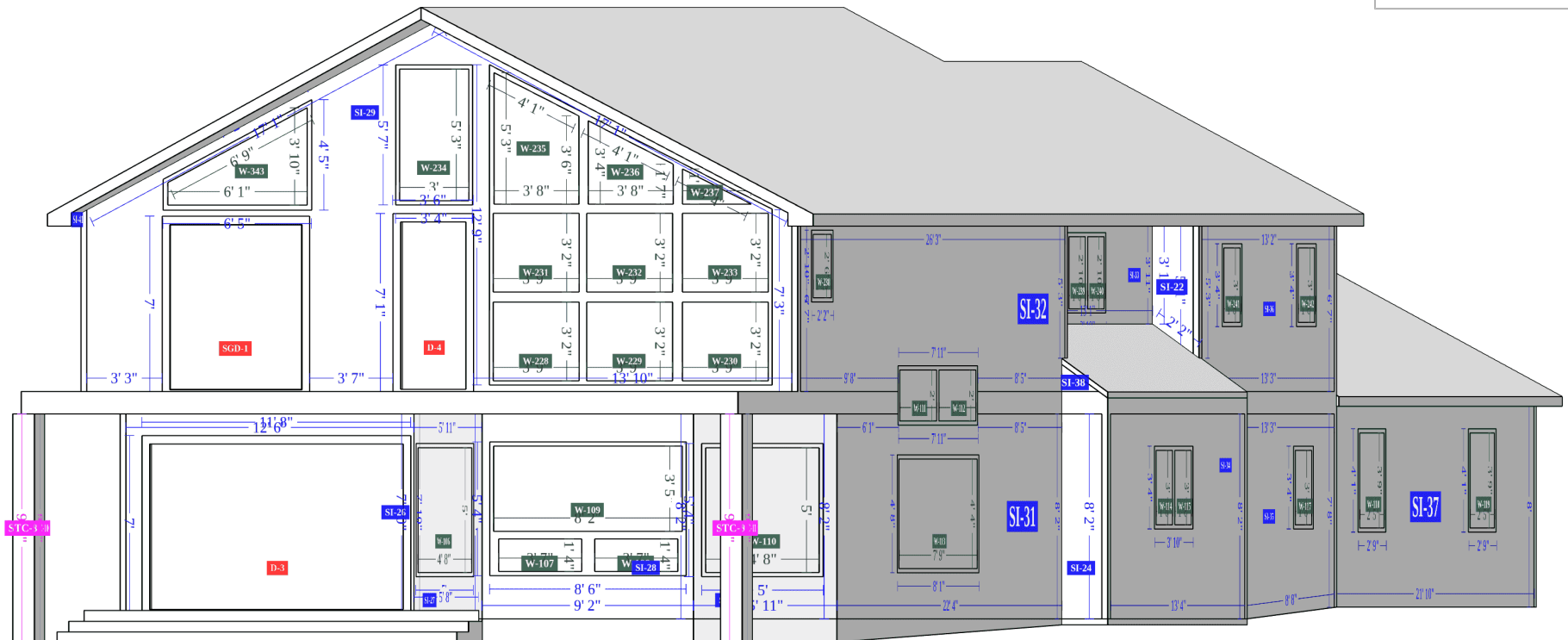
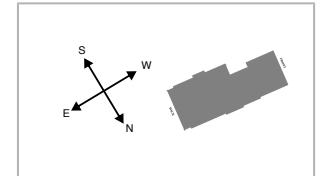
BACK





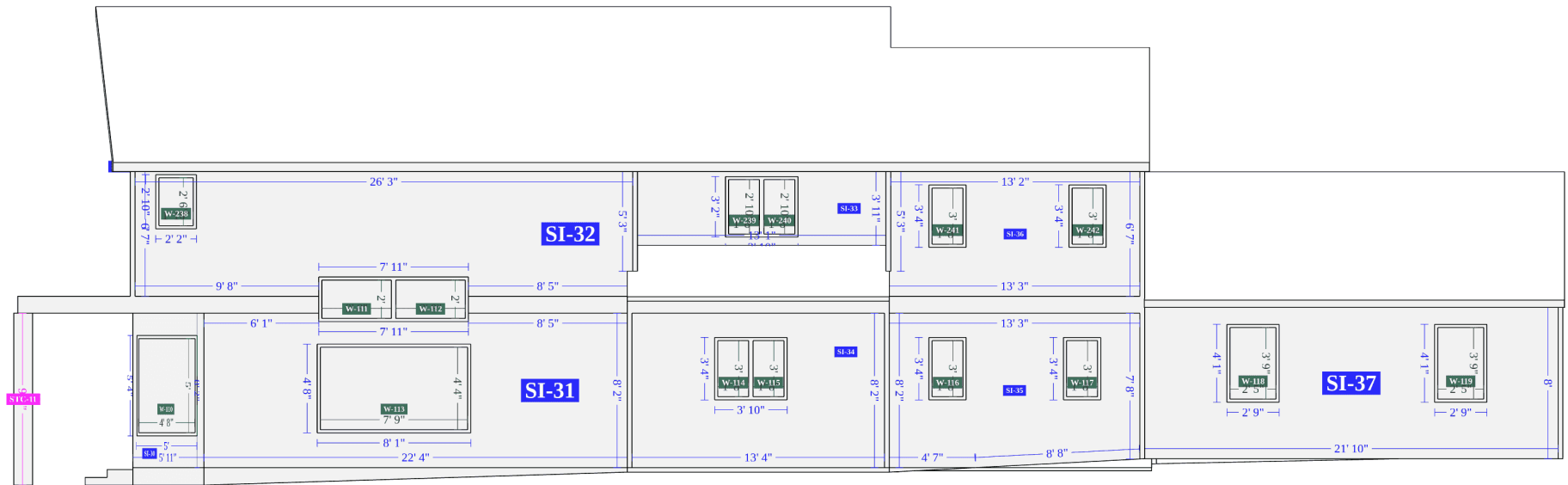
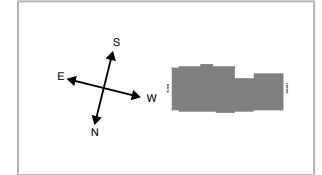
## Complete Measurements

BACK-LEFT



## Complete Measurements

LEFT









## Complete Measurements

## FACADES

### Siding

Facade	Area	Inside Corners	Outside Corners	Openings	Shutters	Vents
SI-1	154 ft <sup>2</sup>	-	2	1	-	-
SI-2	6 ft <sup>2</sup>	1	-	-	-	-
SI-3	171 ft <sup>2</sup>	-	2	-	-	-
SI-4	136 ft <sup>2</sup>	-	1	-	-	1
SI-5	14 ft <sup>2</sup>	1	1	-	-	-
SI-6	109 ft <sup>2</sup>	1	1	-	-	-
SI-7	73 ft <sup>2</sup>	2	1	2	-	-
SI-8	15 ft <sup>2</sup>	2	-	1	-	-
SI-9	112 ft <sup>2</sup>	1	1	-	-	-
SI-10	8 ft <sup>2</sup>	1	1	-	-	-
SI-11	74 ft <sup>2</sup>	1	1	1	-	-
SI-12	93 ft <sup>2</sup>	1	1	2	-	-
SI-13	58 ft <sup>2</sup>	1	1	1	-	-
SI-14	11 ft <sup>2</sup>	1	-	-	-	-
SI-15	8 ft <sup>2</sup>	1	-	-	-	-
SI-16	48 ft <sup>2</sup>	-	-	-	-	-
SI-17	37 ft <sup>2</sup>	-	-	1	-	-
SI-18	85 ft <sup>2</sup>	1	1	2	-	-
SI-19	85 ft <sup>2</sup>	1	1	4	-	-



## Complete Measurements

FACADES

### Siding (cont.)

Facade	Area	Inside Corners	Outside Corners	Openings	Shutters	Vents
SI-20	37 ft <sup>2</sup>	3	1	-	-	-
SI-21	6 ft <sup>2</sup>	1	1	-	-	-
SI-22	8 ft <sup>2</sup>	1	1	-	-	-
SI-23	11 ft <sup>2</sup>	1	-	-	-	-
SI-24	14 ft <sup>2</sup>	1	1	-	-	-
SI-25	8 ft <sup>2</sup>	1	-	-	-	-
SI-26	17 ft <sup>2</sup>	1	1	1	-	-
SI-27	20 ft <sup>2</sup>	1	1	1	-	-
SI-28	29 ft <sup>2</sup>	-	2	3	-	-
SI-29	110 ft <sup>2</sup>	-	2	13	-	-
SI-30	22 ft <sup>2</sup>	-	2	1	-	-
SI-31	141 ft <sup>2</sup>	1	1	1	-	-
SI-32	158 ft <sup>2</sup>	1	2	3	-	-
SI-33	39 ft <sup>2</sup>	2	-	2	-	-
SI-34	96 ft <sup>2</sup>	-	2	2	-	-
SI-35	93 ft <sup>2</sup>	1	-	2	-	-
SI-36	74 ft <sup>2</sup>	1	1	2	-	-
SI-37	152 ft <sup>2</sup>	2	1	2	-	-
SI-38*	1 ft <sup>2</sup>	1	-	-	-	-



## Complete Measurements

FACADES

### Siding (cont.)

Facade	Area	Inside Corners	Outside Corners	Openings	Shutters	Vents
SI-39*	1 ft <sup>2</sup>	1	-	-	-	-
SI-40*	1 ft <sup>2</sup>	-	1	-	-	-
SI-41*	1 ft <sup>2</sup>	-	1	-	-	-
Total	2336 ft <sup>2</sup>	36	36	48	0	1

\* Facet is not visible due to size or location



## Complete Measurements

FACADES

### Stucco

Facade	Area	Openings	Shutters	Vents
STC-1	8 ft <sup>2</sup>	-	-	-
STC-2	8 ft <sup>2</sup>	-	-	-
STC-3	8 ft <sup>2</sup>	-	-	-
STC-4	9 ft <sup>2</sup>	-	-	-
STC-5	8 ft <sup>2</sup>	-	-	-
STC-6	9 ft <sup>2</sup>	-	-	-
STC-7	8 ft <sup>2</sup>	-	-	-
STC-8	8 ft <sup>2</sup>	-	-	-
STC-9	8 ft <sup>2</sup>	-	-	-
STC-10	9 ft <sup>2</sup>	-	-	-
STC-11	9 ft <sup>2</sup>	-	-	-
STC-12	8 ft <sup>2</sup>	-	-	-
Total	100 ft <sup>2</sup>	0	0	0



## Complete Measurements

## SIDING

### Facades

		Trim			Corners		Roofline		Openings		
Facade	Area	Level Starter	Sloped	Vertical	Inside	Outside	Level Frieze Board	Sloped Frieze Board	Tops	Sills	Sides
SI-1	154 ft <sup>2</sup>	6'	1' 5"	6"	-	15' 10"	-	27' 7"	15' 4"	-	15' 5"
SI-2	6 ft <sup>2</sup>	9"	-	7' 8"	7' 8"	-	1'	-	-	-	-
SI-3	171 ft <sup>2</sup>	21' 3"	-	-	-	16' 2"	21' 2"	-	-	-	-
SI-4	136 ft <sup>2</sup>	-	24' 5"	7' 3"	-	4' 6"	-	24' 5"	-	-	-
SI-5	14 ft <sup>2</sup>	1' 9"	-	-	8' 2"	8' 9"	-	-	-	-	-
SI-6	109 ft <sup>2</sup>	13' 8"	-	-	8'	8'	13' 8"	-	-	-	-
SI-7	73 ft <sup>2</sup>	13' 9"	-	4"	8' 4"	4' 6"	13' 2"	-	3' 5"	3' 5"	8' 7"
SI-8	15 ft <sup>2</sup>	10"	-	-	15' 11"	-	8' 5"	-	7' 7"	-	13' 7"
SI-9	112 ft <sup>2</sup>	8' 6"	13' 1"	6"	6' 7"	7' 8"	1' 1"	21' 5"	-	-	-
SI-10	8 ft <sup>2</sup>	-	2' 2"	-	3' 11"	5' 3"	1' 9"	-	-	-	-
SI-11	74 ft <sup>2</sup>	9' 11"	-	-	8'	8'	9' 11"	-	2' 8"	2' 8"	4' 1"
SI-12	93 ft <sup>2</sup>	16'	-	-	6' 7"	7' 8"	16'	-	6' 1"	6' 1"	8' 1"
SI-13	58 ft <sup>2</sup>	7' 10"	-	-	8' 2"	8'	-	-	3'	3'	4'
SI-14	11 ft <sup>2</sup>	1' 3"	-	-	8' 2"	-	-	-	-	-	-
SI-15	8 ft <sup>2</sup>	1' 3"	-	-	6' 7"	-	1' 3"	-	-	-	-
SI-16	48 ft <sup>2</sup>	7' 9"	-	-	-	-	-	-	-	4' 5"	7' 7"
SI-17	37 ft <sup>2</sup>	3' 4"	-	4"	-	-	1"	8' 7"	3' 3"	1' 2"	11' 5"
SI-18	85 ft <sup>2</sup>	11' 9"	-	4"	8' 2"	7' 10"	-	-	5' 2"	5' 2"	3' 1"



## Complete Measurements

## SIDING

### Facades (cont.)

		Trim			Corners		Roofline		Openings		
Facade	Area	Level Starter	Sloped	Vertical	Inside	Outside	Level Frieze Board	Sloped Frieze Board	Tops	Sills	Sides
SI-19	85 ft <sup>2</sup>	15' 4"	-	-	6' 7"	6' 7"	15' 4"	-	5' 2"	5' 2"	6' 4"
SI-20	37 ft <sup>2</sup>	1' 10"	2'	-	10' 10"	8' 4"	9"	3' 6"	-	-	-
SI-21	6 ft <sup>2</sup>	9"	-	-	8'	8'	9"	-	-	-	-
SI-22	8 ft <sup>2</sup>	-	2' 2"	-	3' 11"	5' 3"	1' 9"	-	-	-	-
SI-23	11 ft <sup>2</sup>	1' 3"	-	-	8' 2"	-	-	-	-	-	-
SI-24	14 ft <sup>2</sup>	1' 9"	-	-	8' 2"	8' 9"	-	-	-	-	-
SI-25	8 ft <sup>2</sup>	1' 3"	-	-	6' 7"	-	1' 3"	-	-	-	-
SI-26	17 ft <sup>2</sup>	10"	-	-	7' 10"	7' 10"	12' 6"	-	11' 8"	-	13' 11"
SI-27	20 ft <sup>2</sup>	5' 11"	-	4"	7' 10"	8' 2"	5' 11"	-	5'	5'	10' 7"
SI-28	29 ft <sup>2</sup>	9' 2"	-	-	-	16' 4"	9' 2"	-	8' 6"	8' 6"	10' 8"
SI-29	110 ft <sup>2</sup>	20' 8"	-	-	-	13' 2"	-	34' 2"	13' 3"	22' 1"	85' 4"
SI-30	22 ft <sup>2</sup>	5' 11"	-	-	-	16' 4"	5' 11"	-	5'	5'	10' 7"
SI-31	141 ft <sup>2</sup>	22' 4"	-	-	8' 2"	8' 2"	-	-	8' 1"	16'	10' 3"
SI-32	158 ft <sup>2</sup>	18' 4"	-	3"	1' 1"	11' 10"	26' 3"	-	10' 1"	2' 2"	7' 9"
SI-33	39 ft <sup>2</sup>	13' 1"	-	-	7' 10"	-	13' 1"	-	3' 10"	3' 10"	6' 5"
SI-34	96 ft <sup>2</sup>	13' 4"	-	-	-	17' 7"	13' 10"	-	3' 10"	3' 10"	6' 7"
SI-35	93 ft <sup>2</sup>	4' 7"	8' 8"	-	8' 2"	-	-	-	3' 11"	3' 11"	13' 2"
SI-36	74 ft <sup>2</sup>	13' 3"	-	3"	1' 1"	5' 3"	13' 2"	-	3' 11"	3' 11"	13' 2"



## Complete Measurements

SIDING

### Facades (cont.)

		Trim			Corners		Roofline		Openings		
Facade	Area	Level Starter	Sloped	Vertical	Inside	Outside	Level Frieze Board	Sloped Frieze Board	Tops	Sills	Sides
SI-37	152 ft <sup>2</sup>	21' 10"	-	-	8'	8'	21' 10"	-	5' 6"	5' 6"	16' 5"
SI-38 <sup>†</sup>	1 ft <sup>2</sup>	1' 7"	-	-	1' 1"	-	-	1' 11"	-	-	-
SI-39 <sup>†</sup>	1 ft <sup>2</sup>	1' 7"	-	-	1' 1"	-	-	1' 11"	-	-	-
SI-40 <sup>†</sup>	1 ft <sup>2</sup>	1'	-	6"	-	6' 7"	1'	-	-	-	-
SI-41 <sup>†</sup>	1 ft <sup>2</sup>	1'	-	6"	-	6' 7"	1'	-	-	-	-
Total*	2336 ft <sup>2</sup>	302' 3"	54'	18' 10"	104' 10"	125' 9"	231' 1"	123' 6"	134' 4"	111'	287' 2"

\*Totals de-duplicate any line segments that are shared between multiple facades, and as a result may not represent a total summation of the corresponding column.

<sup>†</sup> Facet is not visible due to size or location



## Complete Measurements

SIDING

### Example Waste Factor Calculations

---

#### SIDING & TRIM ONLY

	Zero Waste	+10%	+18%
SI-1	154 ft <sup>2</sup>	169 ft <sup>2</sup>	182 ft <sup>2</sup>
SI-2	6 ft <sup>2</sup>	7 ft <sup>2</sup>	7 ft <sup>2</sup>
SI-3	171 ft <sup>2</sup>	188 ft <sup>2</sup>	202 ft <sup>2</sup>
SI-4	136 ft <sup>2</sup>	150 ft <sup>2</sup>	160 ft <sup>2</sup>
SI-5	14 ft <sup>2</sup>	15 ft <sup>2</sup>	17 ft <sup>2</sup>
SI-6	109 ft <sup>2</sup>	120 ft <sup>2</sup>	129 ft <sup>2</sup>
SI-7	73 ft <sup>2</sup>	80 ft <sup>2</sup>	86 ft <sup>2</sup>
SI-8	15 ft <sup>2</sup>	17 ft <sup>2</sup>	18 ft <sup>2</sup>
SI-9	112 ft <sup>2</sup>	123 ft <sup>2</sup>	132 ft <sup>2</sup>
SI-10	8 ft <sup>2</sup>	9 ft <sup>2</sup>	9 ft <sup>2</sup>
SI-11	74 ft <sup>2</sup>	81 ft <sup>2</sup>	87 ft <sup>2</sup>
SI-12	93 ft <sup>2</sup>	102 ft <sup>2</sup>	110 ft <sup>2</sup>
SI-13	58 ft <sup>2</sup>	64 ft <sup>2</sup>	68 ft <sup>2</sup>
SI-14	11 ft <sup>2</sup>	12 ft <sup>2</sup>	13 ft <sup>2</sup>
SI-15	8 ft <sup>2</sup>	9 ft <sup>2</sup>	9 ft <sup>2</sup>
SI-16	48 ft <sup>2</sup>	53 ft <sup>2</sup>	57 ft <sup>2</sup>

#### + OPENINGS < 20FT<sup>2</sup>

Zero Waste	+10%	+18%
154 ft <sup>2</sup>	169 ft <sup>2</sup>	182 ft <sup>2</sup>
6 ft <sup>2</sup>	7 ft <sup>2</sup>	7 ft <sup>2</sup>
171 ft <sup>2</sup>	188 ft <sup>2</sup>	202 ft <sup>2</sup>
136 ft <sup>2</sup>	150 ft <sup>2</sup>	160 ft <sup>2</sup>
14 ft <sup>2</sup>	15 ft <sup>2</sup>	17 ft <sup>2</sup>
109 ft <sup>2</sup>	120 ft <sup>2</sup>	129 ft <sup>2</sup>
83 ft <sup>2</sup>	91 ft <sup>2</sup>	98 ft <sup>2</sup>
15 ft <sup>2</sup>	17 ft <sup>2</sup>	18 ft <sup>2</sup>
112 ft <sup>2</sup>	123 ft <sup>2</sup>	132 ft <sup>2</sup>
8 ft <sup>2</sup>	9 ft <sup>2</sup>	9 ft <sup>2</sup>
78 ft <sup>2</sup>	86 ft <sup>2</sup>	92 ft <sup>2</sup>
103 ft <sup>2</sup>	113 ft <sup>2</sup>	122 ft <sup>2</sup>
63 ft <sup>2</sup>	69 ft <sup>2</sup>	74 ft <sup>2</sup>
11 ft <sup>2</sup>	12 ft <sup>2</sup>	13 ft <sup>2</sup>
8 ft <sup>2</sup>	9 ft <sup>2</sup>	9 ft <sup>2</sup>
48 ft <sup>2</sup>	53 ft <sup>2</sup>	57 ft <sup>2</sup>

#### + OPENINGS < 33FT<sup>2</sup>

Zero Waste	+10%	+18%
154 ft <sup>2</sup>	169 ft <sup>2</sup>	182 ft <sup>2</sup>
6 ft <sup>2</sup>	7 ft <sup>2</sup>	7 ft <sup>2</sup>
171 ft <sup>2</sup>	188 ft <sup>2</sup>	202 ft <sup>2</sup>
136 ft <sup>2</sup>	150 ft <sup>2</sup>	160 ft <sup>2</sup>
14 ft <sup>2</sup>	15 ft <sup>2</sup>	17 ft <sup>2</sup>
109 ft <sup>2</sup>	120 ft <sup>2</sup>	129 ft <sup>2</sup>
83 ft <sup>2</sup>	91 ft <sup>2</sup>	98 ft <sup>2</sup>
15 ft <sup>2</sup>	17 ft <sup>2</sup>	18 ft <sup>2</sup>
112 ft <sup>2</sup>	123 ft <sup>2</sup>	132 ft <sup>2</sup>
8 ft <sup>2</sup>	9 ft <sup>2</sup>	9 ft <sup>2</sup>
78 ft <sup>2</sup>	86 ft <sup>2</sup>	92 ft <sup>2</sup>
103 ft <sup>2</sup>	113 ft <sup>2</sup>	122 ft <sup>2</sup>
63 ft <sup>2</sup>	69 ft <sup>2</sup>	74 ft <sup>2</sup>
11 ft <sup>2</sup>	12 ft <sup>2</sup>	13 ft <sup>2</sup>
8 ft <sup>2</sup>	9 ft <sup>2</sup>	9 ft <sup>2</sup>
48 ft <sup>2</sup>	53 ft <sup>2</sup>	57 ft <sup>2</sup>





## Complete Measurements

## SIDING

### SIDING & TRIM ONLY (CONT.)

	Zero Waste	+10%	+18%
<b>SI-17</b>	37 ft <sup>2</sup>	41 ft <sup>2</sup>	44 ft <sup>2</sup>
<b>SI-18</b>	85 ft <sup>2</sup>	94 ft <sup>2</sup>	100 ft <sup>2</sup>
<b>SI-19</b>	85 ft <sup>2</sup>	94 ft <sup>2</sup>	100 ft <sup>2</sup>
<b>SI-20</b>	37 ft <sup>2</sup>	41 ft <sup>2</sup>	44 ft <sup>2</sup>
<b>SI-21</b>	6 ft <sup>2</sup>	7 ft <sup>2</sup>	7 ft <sup>2</sup>
<b>SI-22</b>	8 ft <sup>2</sup>	9 ft <sup>2</sup>	9 ft <sup>2</sup>
<b>SI-23</b>	11 ft <sup>2</sup>	12 ft <sup>2</sup>	13 ft <sup>2</sup>
<b>SI-24</b>	14 ft <sup>2</sup>	15 ft <sup>2</sup>	17 ft <sup>2</sup>
<b>SI-25</b>	8 ft <sup>2</sup>	9 ft <sup>2</sup>	9 ft <sup>2</sup>
<b>SI-26</b>	17 ft <sup>2</sup>	19 ft <sup>2</sup>	20 ft <sup>2</sup>
<b>SI-27</b>	20 ft <sup>2</sup>	22 ft <sup>2</sup>	24 ft <sup>2</sup>
<b>SI-28</b>	29 ft <sup>2</sup>	32 ft <sup>2</sup>	34 ft <sup>2</sup>
<b>SI-29</b>	110 ft <sup>2</sup>	121 ft <sup>2</sup>	130 ft <sup>2</sup>
<b>SI-30</b>	22 ft <sup>2</sup>	24 ft <sup>2</sup>	26 ft <sup>2</sup>
<b>SI-31</b>	141 ft <sup>2</sup>	155 ft <sup>2</sup>	166 ft <sup>2</sup>
<b>SI-32</b>	158 ft <sup>2</sup>	174 ft <sup>2</sup>	186 ft <sup>2</sup>

### + OPENINGS < 20FT<sup>2</sup>

Zero Waste	+10%	+18%
37 ft <sup>2</sup>	41 ft <sup>2</sup>	44 ft <sup>2</sup>
91 ft <sup>2</sup>	100 ft <sup>2</sup>	107 ft <sup>2</sup>
97 ft <sup>2</sup>	107 ft <sup>2</sup>	114 ft <sup>2</sup>
37 ft <sup>2</sup>	41 ft <sup>2</sup>	44 ft <sup>2</sup>
6 ft <sup>2</sup>	7 ft <sup>2</sup>	7 ft <sup>2</sup>
8 ft <sup>2</sup>	9 ft <sup>2</sup>	9 ft <sup>2</sup>
11 ft <sup>2</sup>	12 ft <sup>2</sup>	13 ft <sup>2</sup>
14 ft <sup>2</sup>	15 ft <sup>2</sup>	17 ft <sup>2</sup>
8 ft <sup>2</sup>	9 ft <sup>2</sup>	9 ft <sup>2</sup>
17 ft <sup>2</sup>	19 ft <sup>2</sup>	20 ft <sup>2</sup>
20 ft <sup>2</sup>	22 ft <sup>2</sup>	24 ft <sup>2</sup>
39 ft <sup>2</sup>	43 ft <sup>2</sup>	46 ft <sup>2</sup>
251 ft <sup>2</sup>	276 ft <sup>2</sup>	296 ft <sup>2</sup>
22 ft <sup>2</sup>	24 ft <sup>2</sup>	26 ft <sup>2</sup>
141 ft <sup>2</sup>	155 ft <sup>2</sup>	166 ft <sup>2</sup>
177 ft <sup>2</sup>	195 ft <sup>2</sup>	209 ft <sup>2</sup>

### + OPENINGS < 33FT<sup>2</sup>

Zero Waste	+10%	+18%
37 ft <sup>2</sup>	41 ft <sup>2</sup>	44 ft <sup>2</sup>
91 ft <sup>2</sup>	100 ft <sup>2</sup>	107 ft <sup>2</sup>
97 ft <sup>2</sup>	107 ft <sup>2</sup>	114 ft <sup>2</sup>
37 ft <sup>2</sup>	41 ft <sup>2</sup>	44 ft <sup>2</sup>
6 ft <sup>2</sup>	7 ft <sup>2</sup>	7 ft <sup>2</sup>
8 ft <sup>2</sup>	9 ft <sup>2</sup>	9 ft <sup>2</sup>
11 ft <sup>2</sup>	12 ft <sup>2</sup>	13 ft <sup>2</sup>
14 ft <sup>2</sup>	15 ft <sup>2</sup>	17 ft <sup>2</sup>
8 ft <sup>2</sup>	9 ft <sup>2</sup>	9 ft <sup>2</sup>
17 ft <sup>2</sup>	19 ft <sup>2</sup>	20 ft <sup>2</sup>
43 ft <sup>2</sup>	47 ft <sup>2</sup>	51 ft <sup>2</sup>
67 ft <sup>2</sup>	74 ft <sup>2</sup>	79 ft <sup>2</sup>
274 ft <sup>2</sup>	301 ft <sup>2</sup>	323 ft <sup>2</sup>
45 ft <sup>2</sup>	50 ft <sup>2</sup>	53 ft <sup>2</sup>
141 ft <sup>2</sup>	155 ft <sup>2</sup>	166 ft <sup>2</sup>
177 ft <sup>2</sup>	195 ft <sup>2</sup>	209 ft <sup>2</sup>



## Complete Measurements

## SIDING

### SIDING & TRIM ONLY (CONT.)

	Zero Waste	+10%	+18%
<b>SI-33</b>	39 ft <sup>2</sup>	43 ft <sup>2</sup>	46 ft <sup>2</sup>
<b>SI-34</b>	96 ft <sup>2</sup>	106 ft <sup>2</sup>	113 ft <sup>2</sup>
<b>SI-35</b>	93 ft <sup>2</sup>	102 ft <sup>2</sup>	110 ft <sup>2</sup>
<b>SI-36</b>	74 ft <sup>2</sup>	81 ft <sup>2</sup>	87 ft <sup>2</sup>
<b>SI-37</b>	152 ft <sup>2</sup>	167 ft <sup>2</sup>	179 ft <sup>2</sup>
<b>SI-38</b>	1 ft <sup>2</sup>	1 ft <sup>2</sup>	1 ft <sup>2</sup>
<b>SI-39</b>	1 ft <sup>2</sup>	1 ft <sup>2</sup>	1 ft <sup>2</sup>
<b>SI-40</b>	1 ft <sup>2</sup>	1 ft <sup>2</sup>	1 ft <sup>2</sup>
<b>SI-41</b>	1 ft <sup>2</sup>	1 ft <sup>2</sup>	1 ft <sup>2</sup>
<b>Trims</b>	180 ft <sup>2</sup>	198 ft <sup>2</sup>	212 ft <sup>2</sup>
<b>Total</b>	2516 ft <sup>2</sup>	2769 ft <sup>2</sup>	2966 ft <sup>2</sup>

### + OPENINGS < 20FT<sup>2</sup>

Zero Waste	+10%	+18%
49 ft <sup>2</sup>	54 ft <sup>2</sup>	58 ft <sup>2</sup>
106 ft <sup>2</sup>	117 ft <sup>2</sup>	125 ft <sup>2</sup>
103 ft <sup>2</sup>	113 ft <sup>2</sup>	122 ft <sup>2</sup>
84 ft <sup>2</sup>	92 ft <sup>2</sup>	99 ft <sup>2</sup>
170 ft <sup>2</sup>	187 ft <sup>2</sup>	201 ft <sup>2</sup>
1 ft <sup>2</sup>	1 ft <sup>2</sup>	1 ft <sup>2</sup>
1 ft <sup>2</sup>	1 ft <sup>2</sup>	1 ft <sup>2</sup>
1 ft <sup>2</sup>	1 ft <sup>2</sup>	1 ft <sup>2</sup>
1 ft <sup>2</sup>	1 ft <sup>2</sup>	1 ft <sup>2</sup>
311 ft <sup>2</sup>	342 ft <sup>2</sup>	367 ft <sup>2</sup>
2922 ft <sup>2</sup>	3215 ft <sup>2</sup>	3448 ft <sup>2</sup>

### + OPENINGS < 33FT<sup>2</sup>

Zero Waste	+10%	+18%
49 ft <sup>2</sup>	54 ft <sup>2</sup>	58 ft <sup>2</sup>
106 ft <sup>2</sup>	117 ft <sup>2</sup>	125 ft <sup>2</sup>
103 ft <sup>2</sup>	113 ft <sup>2</sup>	122 ft <sup>2</sup>
84 ft <sup>2</sup>	92 ft <sup>2</sup>	99 ft <sup>2</sup>
170 ft <sup>2</sup>	187 ft <sup>2</sup>	201 ft <sup>2</sup>
1 ft <sup>2</sup>	1 ft <sup>2</sup>	1 ft <sup>2</sup>
1 ft <sup>2</sup>	1 ft <sup>2</sup>	1 ft <sup>2</sup>
1 ft <sup>2</sup>	1 ft <sup>2</sup>	1 ft <sup>2</sup>
1 ft <sup>2</sup>	1 ft <sup>2</sup>	1 ft <sup>2</sup>
311 ft <sup>2</sup>	342 ft <sup>2</sup>	367 ft <sup>2</sup>
3019 ft <sup>2</sup>	3322 ft <sup>2</sup>	3562 ft <sup>2</sup>

The first Siding Waste Factor table is calculated using the total ft<sup>2</sup> of siding facades, ft<sup>2</sup> of trim touching siding, and ft<sup>2</sup> of unknowns touching siding.

The tables above provide the area of siding on a given property, segmented by individual and in sum total form. Values include openings (doors & windows) and waste percentages as noted. Please consider that area values and specific waste factors can be influenced by the size and complexity of the property, captured image quality, specific siding techniques, and your own level of expertise. Accessories are not included in these values and may require additional material.

These tables are only intended to make common waste calculations easier and should not be interpreted as recommendations.



## Complete Measurements

## OPENINGS

### Windows

Group	Group Width x Height	Group United Inches	Opening	Width x Height	United Inches	Area
WG-1	28" x 20"	48"	W-101	28" x 20"	48"	4 ft <sup>2</sup>
WG-2	32" x 20"	53"	W-102	32" x 20"	53"	5 ft <sup>2</sup>
WG-3	47" x 119"	166"	W-103	47" x 119"	166"	39 ft <sup>2</sup>
WG-4	58" x 15"	73"	W-104	26" x 15"	40"	3 ft <sup>2</sup>
			W-105	26" x 15"	40"	3 ft <sup>2</sup>
WG-5	56" x 60"	116"	W-106	56" x 60"	116"	23 ft <sup>2</sup>
WG-6	98" x 60"	158"	W-107	43" x 16"	59"	5 ft <sup>2</sup>
			W-108	43" x 16"	59"	5 ft <sup>2</sup>
			W-109	98" x 41"	139"	28 ft <sup>2</sup>
WG-7	56" x 60"	116"	W-110	56" x 60"	116"	23 ft <sup>2</sup>
WG-8	91" x 24"	115"	W-111	44" x 24"	68"	7 ft <sup>2</sup>
			W-112	44" x 24"	68"	7 ft <sup>2</sup>
WG-9	93" x 52"	146"	W-113	93" x 52"	146"	34 ft <sup>2</sup>
WG-10	42" x 36"	77"	W-114	20" x 36"	55"	5 ft <sup>2</sup>
			W-115	20" x 36"	55"	5 ft <sup>2</sup>
WG-11	20" x 36"	55"	W-116	20" x 36"	55"	5 ft <sup>2</sup>
WG-12	20" x 36"	55"	W-117	20" x 36"	55"	5 ft <sup>2</sup>
WG-13	29" x 45"	74"	W-118	29" x 45"	74"	9 ft <sup>2</sup>



## Complete Measurements

## OPENINGS

### Windows (cont.)

Group	Group Width x Height	Group United Inches	Opening	Width x Height	United Inches	Area
WG-14	29" x 45"	74"	W-119	29" x 45"	74"	9 ft <sup>2</sup>
WG-15	37" x 48"	84"	W-220	16" x 48"	63"	5 ft <sup>2</sup>
			W-221	16" x 48"	63"	5 ft <sup>2</sup>
WG-16	32" x 20"	53"	W-222	32" x 20"	53"	5 ft <sup>2</sup>
WG-17	32" x 20"	53"	W-223	32" x 20"	53"	5 ft <sup>2</sup>
WG-18	58" x 34"	92"	W-224	26" x 15"	40"	3 ft <sup>2</sup>
			W-225	26" x 15"	40"	3 ft <sup>2</sup>
			W-226	26" x 15"	40"	3 ft <sup>2</sup>
			W-227	26" x 15"	40"	3 ft <sup>2</sup>
WG-19	143" x 147"	290"	W-228	45" x 38"	82"	12 ft <sup>2</sup>
			W-229	45" x 38"	82"	12 ft <sup>2</sup>
			W-230	45" x 38"	82"	12 ft <sup>2</sup>
			W-231	45" x 38"	82"	12 ft <sup>2</sup>
			W-232	45" x 38"	82"	12 ft <sup>2</sup>
			W-233	45" x 38"	82"	12 ft <sup>2</sup>
			W-235	44" x 63"	107"	19 ft <sup>2</sup>
			W-236	44" x 40"	84"	12 ft <sup>2</sup>
			W-237	36" x 17"	53"	4 ft <sup>2</sup>



## Complete Measurements

## OPENINGS

### Windows (cont.)

Group	Group Width x Height	Group United Inches	Opening	Width x Height	United Inches	Area
WG-20	36" x 63"	99"	W-234	36" x 63"	99"	16 ft <sup>2</sup>
WG-21	22" x 30"	52"	W-238	22" x 30"	52"	5 ft <sup>2</sup>
WG-22	42" x 34"	76"	W-239	20" x 34"	54"	5 ft <sup>2</sup>
			W-240	20" x 34"	54"	5 ft <sup>2</sup>
WG-23	20" x 36"	55"	W-241	20" x 36"	55"	5 ft <sup>2</sup>
WG-24	20" x 36"	55"	W-242	20" x 36"	55"	5 ft <sup>2</sup>
WG-25	73" x 46"	119"	W-343	73" x 46"	119"	23 ft <sup>2</sup>
			Total	-	3106"	427 ft <sup>2</sup>



## Complete Measurements

### Doors

Opening	Width x Height
D-1	192" x 84"
D-2	60" x 80"
D-3	144" x 80"
D-4	32" x 80"
SGD-1	72" x 80"

\*Door height and width have been snapped to standard

### Entire Doors

Opening	Width x Height	Area
D-1	201" x 86"	119 ft <sup>2</sup>
D-2	89" x 80"	49 ft <sup>2</sup>
D-3	132" x 79"	72 ft <sup>2</sup>
D-4	34" x 80"	19 ft <sup>2</sup>
SGD-1	69" x 79"	38 ft <sup>2</sup>
Total	-	297 ft <sup>2</sup>

\*Total door square footage includes entire door package (e.g. with transoms, sidelites, etc.)

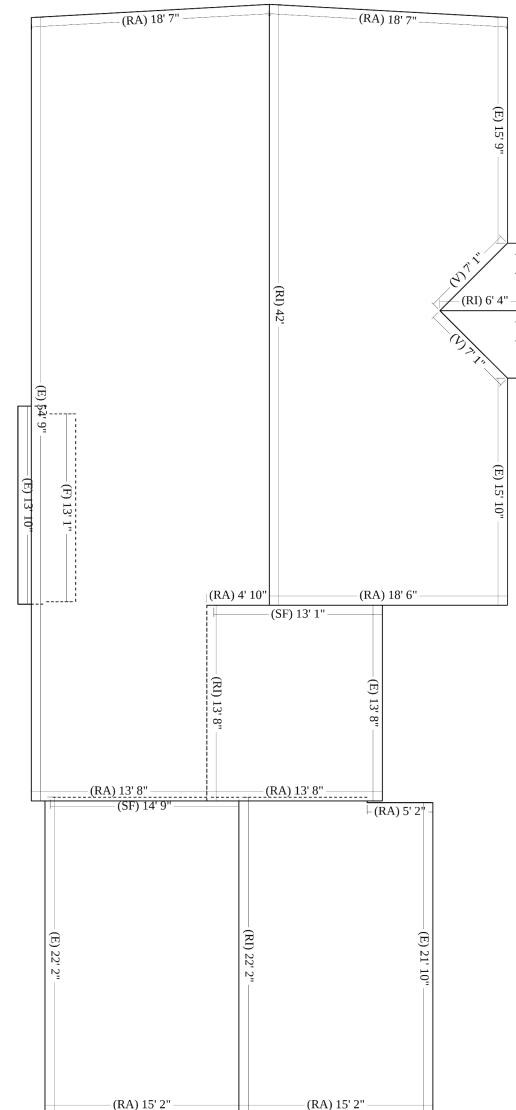


## Complete Measurements

## ROOF MEASUREMENTS

Roof	Length
Ridges (RI)	84' 1"
Hips (H)	-
Valleys (V)	14' 2"
Rakes (RA)	138' 9"
Eaves (E)	161'
Flashing (F)*	13' 10"
Step Flashing (SF)*	43' 7"
Transition Line (TL)	-

\*Please view the 3D model for more detail (e.g. flashing, step flashing and some other roof lines may be difficult to see on the PDF)

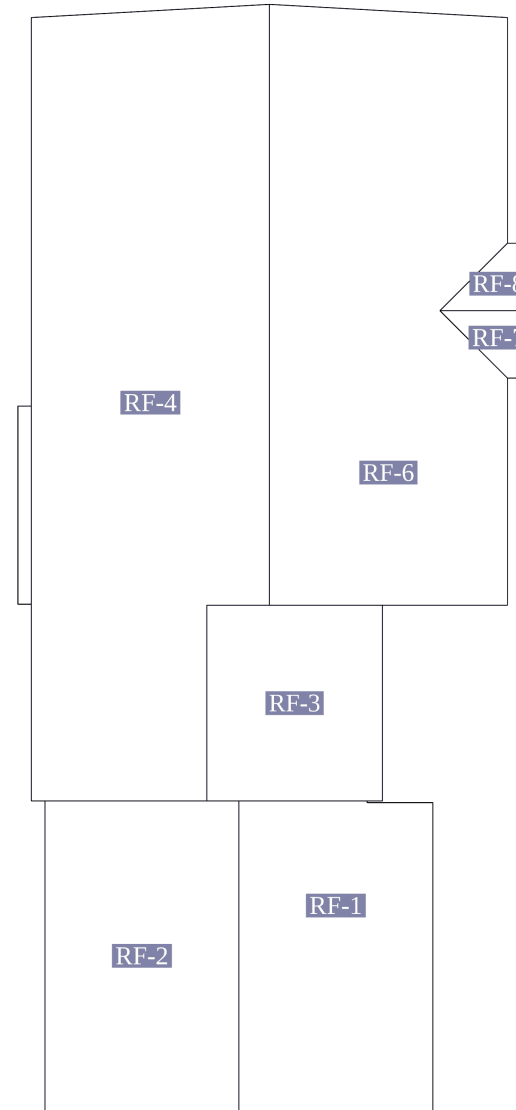




## Complete Measurements

### Roof Facets

Facet	Area	Pitch
RF-1	334 ft <sup>2</sup>	6/12
RF-2	336 ft <sup>2</sup>	6/12
RF-3	187 ft <sup>2</sup>	6/12
RF-4	956 ft <sup>2</sup>	6/12
RF-5	65 ft <sup>2</sup>	8/12
RF-6	745 ft <sup>2</sup>	6/12
RF-7	21 ft <sup>2</sup>	6/12
RF-8	21 ft <sup>2</sup>	6/12



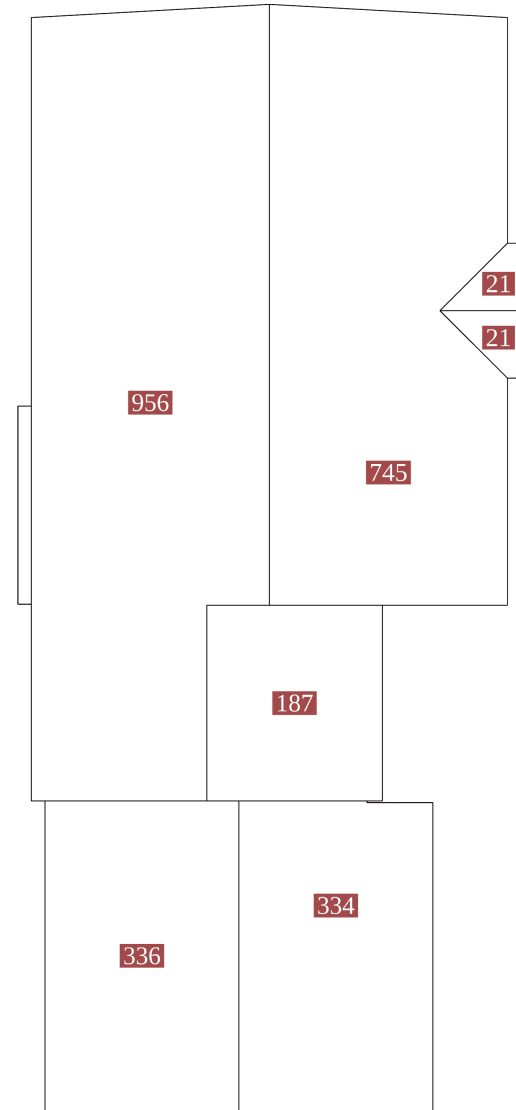




## Complete Measurements

ROOF AREA

Roof	Facets	Total
Total	8	2665 ft <sup>2</sup>

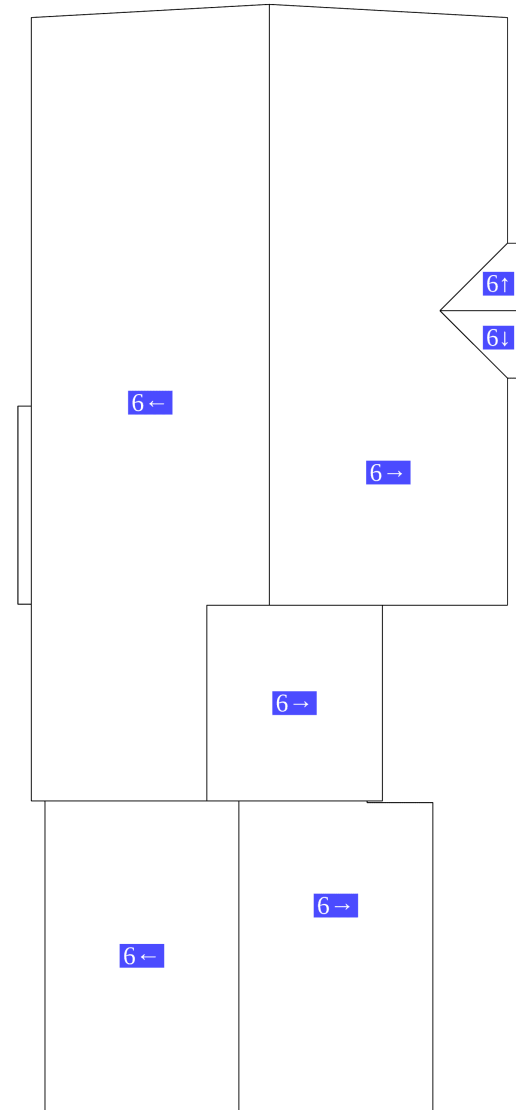




## Complete Measurements

ROOF PITCH

Roof Pitch	Area	Percentage
6 / 12	2600 ft <sup>2</sup>	97.56%
8 / 12	65 ft <sup>2</sup>	2.44%





## Complete Measurements

## PHOTOS







## Complete Measurements

## PHOTOS







## Complete Measurements

PHOTOS

