



***70th Anniversary
Open House***

***Sunday, October 24, 1993
2:00 - 4:00 p.m.***

PROGRAM

Welcome

Tamara Breeden, Principal

"Consider Yourself"

Consider yourself at home, consider yourself one of the family.
We've taken to you so strong, it's clear we're going to get along!
Consider yourself well in, consider yourself part of the furniture.
There isn't alot to spare; Who cares? Whatever we've got we'll share!
If it should chance to be we should see some harder days, empty larder
days, why grouse?
Always a chance we'll meet somebody to foot the bill, then the smiles
are on the house!
Consider yourself our mate, we don't want to have no fuss
For after some consideration we can state: Consider yourself one of us!

Remarks

Arkansas Avenue Scholarship
70th Anniversary Commemorative Buttons
Guest Book
Displays
Refreshments

Introductions

Student Hosts & Greeters
Current Students
Former Students
Current Staff
Former Staff
Former Principals

"Happy Birthday"

ARKANSAS AVENUE PRINCIPALS

1923-25	John Dunkelberger	1946-52	Fred Addis
1925-27	John F. Grider	1952-59	John Gasper
1927-28	Della N. Deitweiller	1959-65	Fred Snyder
1928-31	Florence Boucher	1965-73	W. Eugene Smith
1931-34	Inez Vance	1973-83	J. B. Johnson
1934-38	Ira F. Eberhart	1983-88	Gloria Crockett
1938-39	J. Paul Vandergriff	1988-91	Peg Dokken
1939-42	Willard Leatherman	1991-	Tamara O. Breeden
1942-46	Prudence Romine		

EARLY HISTORY

In the summer of 1923 a new school district (District #120) was formed and as a result a new school (Arkansas Avenue Elementary) was built. Prior to the 1923-24 school year, students in this area had gone to a very small white frame school located on the east side of Arkansas Avenue, just north of 37th St. N. This school was called Riverside School. This little school became so overcrowded that for a time prior to Arkansas Avenue School being built, students were allowed to attend school only half days. At that point, landowners north of 37th St., having very few children, rejected the idea of expanding the small Riverside School.

Once Arkansas Avenue school was built, the first year's enrollment was 73 students in Grades 1-8. The first PTA meeting was on October 23, 1923, at 7:30 p.m. Twenty-three parents were present that night. The next year membership of the PTA rose to 35.

During the 1927-28 school year, parents began to form a movement to have Arkansas Avenue included as part of the Wichita Public School System.

During the 1930-31 school year, additional rooms were added. In 1931-32, PTA membership was 111 members. During the 1932-33 school year, the PTA received a banner for having the largest membership in the area (possibly in the state).

In 1940-41, the first lunches were served at a cost of \$.05 per day. PTA membership stood at 130. During the 1942-43 school year the PTA (membership of 181) formed a committee in charge of selling defense stamps for the war effort. During the next school year, \$2,290.55 in defense stamps were sold. PTA membership was at 219.

During the 1945-46 school year, with the war over, the school purchased a movie projector. In the 1947-48 school year a new auditorium was built and in the next school year an addition was built onto the library. There was additional building done in 1951-52 and in 1952-53.

During the 1954-55 school year the Salk Polio Vaccine was given to 200 students. The school now had 27 rooms and 20 teachers. It had a PTA membership of 577.

PTA membership reached a high during the 1960-61 school year of 702. For seven consecutive years all rooms had 100% membership in the organization.

During the 1963-64 school year, there was more remodeling and building. In the following year, 1964-65, Arkansas Avenue became part of the city school system.

ARKANSAS AVENUE SCHOLARSHIP FUND

The staff of Arkansas Avenue Elementary School of the Wichita School District will establish a scholarship in the name and honor of Arkansas Avenue Elementary School. The scholarship will be given to a student who is at least a college sophomore, a full-time student taking at least 12 hours of college credit, and with a grade point of at least 3.0. The scholarship can be used at any of the colleges in Wichita. The student must also have some proof of being a former Arkansas Avenue student.

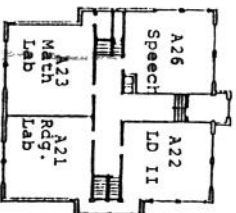
We believe in the educational process for all individuals in the of helping persons develop their full potential. We believe in the continuation of the educational process beyond high school. We believe in helping students realize their importance to society.

We, the staff of Arkansas Avenue, invite you to join us in contributing to this scholarship fund.

Inquiries may be directed to: Tamara Breeden, Principal
Arkansas Avenue Elementary
3361 N. Arkansas
Wichita, KS 67204

THANK YOU FOR SHARING THIS SPECIAL OCCAISION WITH US!

1. Psychologist
2. Counselor
3. Storage
4. Restroom
5. Stage
6. Principal's Office
7. General Office
8. Office
9. Health Room
10. Social Worker
11. Janitor



SECOND FLOOR

12. Workroom
13. Cafeteria
14. Kitchen
15. Teacher's Lounge
16. Furnace Room
17. Library

ARKANSAS AVENUE
ELEMENTARY
SCHOOL

