


☐

I'm not robot

  
reCAPTCHA

I am not robot!



What is enfp personality

What is my personality type enfp. What personality type is compatible with enfp-t. What is the enfp personality type like. What is enfp personality mean. What personality type is attracted to enfp. What personality type is enfp compatible with. What is enfp personality like. What personality is compatible with enfp. What is enfp personality type.



What is enfp personality like. What personality is compatible with enfp. What is enfp personality type. What personality type is similar to enfp. What personality type is best for enfp. What kind of personality is enfp.

ENTP, an acronym from the Myers-Briggs Type Indicator (MBTI), stands for Extraversion, Intuition, Thinking, and Perceiving. ENTPs are dynamic, innovative, and imaginative, thriving on interaction and exploring abstract possibilities. They prefer logical analysis over emotional considerations and value flexibility and spontaneity. Often seen as strategic thinkers and unafraid innovators, they might struggle with routine tasks and come off as argumentative due to their lively minds. ENFP Meaning ENFPs thrive on social engagement (Extraversion), lean towards visionary thinking and possibilities rather than concrete specifics (Intuition), prioritize personal values and emotional impact in their decision-making process (Feeling), and cherish flexibility and openness to new experiences (Perceiving). ENFPs are often described as warm, enthusiastic, and creative individuals. They are passionate about their interests, values, and ideas, and they have a natural ability to inspire and motivate others. ENFP are supportive and appreciative of their loved ones and are often described as charismatic and charming. They often have a strong artistic side and a unique mastery of language. They have excellent people and communication skills and gain energy from being in the company of others. They are free spirits with an optimistic and lively approach to life. However, they might also struggle with overthinking, become easily stressed, and may tend to neglect routine or practical matters. They can be highly emotional and sensitive to criticism. Famous ENTPs include Bill Clinton, Mark Twain, Dr. Suess, Drew Barrymore, Ellen DeGeneres, Ron Weasley, and Julie Andrews. ENFP is a fairly common personality type, and is the fifth most common among women.

ENFPs make up: 8% of the general population 6% of men 10% of women

ESFJs are sometimes referred to as “the Champion” or “the Campaigner.” ISTJ is the opposite personality type of ENFP. Strengths Weaknesses Outgoing and carefree Disorganized Empathetic Hypersensitive Outgoing and carefree Overthinks Highly creative Seek approval from others Strong social and communication skills Struggle to follow through on their ideas

ENTP Characteristics People with the ENFP personality type are highly imaginative and innovative They thrive in situations where they have creative freedom, and they are great at generating original ideas. They are expressive communicators and enjoy discovering the deeper meaning in people and ideas. They can be quite introspective, contemplating the creative possibilities of life. They are always looking for a novel way to do things and refuse to follow the traditional path. ENFPs are enthusiastic, people-centered individuals They are energized by time spent with other people and have a unique passion for helping others explore their potential. They love to talk with just about anyone, learning about what motivates and inspires them and what their dreams and aspirations are. They crave meaningful, deep connections with people and are highly attuned to other people’s feelings and needs. They are excellent communicators, and their warmhearted, approachable personalities enable them to have captivating conversations with all types of people. ENTPs are known to be laid-back and easy going They are non-judgmental and open-minded and like to use their banter and quick wit to analyze and understand other people. They deal well with change and are able to adapt well to any circumstances that might arise throughout their lives. However, ENTPs are also disorganized and seemingly untethered. They become bored easily and struggle with strict routines and schedules. ENFPs are natural-born leaders, standing up for what they believe in without hesitation or apology They are confident in their abilities to handle demanding responsibilities and will eagerly assume leadership positions. ENFPs are spontaneous and highly adaptable to change They strongly dislike routine and prefer having freedom and flexibility in their everyday lives. They often struggle to see things through to completion as they have ever-evolving interests and can become easily bored and stressed out with an old project. Cognitive Functions The MBTI suggests that the four different cognitive functions (thinking, feeling, intuition, and sensing) form a hierarchy where each function is either directed outwardly (extroverted) or inwardly (introverted). The order of these functions determines one’s personality. The dominant function is the primary aspect of personality, while the auxiliary and tertiary functions play supportive roles. ENFPs are abstract, creative thinkers who focus on the infinite possibilities of life and avoid any inconsequential, trivial details. They are inventive and imaginative with a knack for discovering unique connections and patterns among people, places, and ideas. ENFPs tend to prioritize their own emotions and feelings rather than logic and fact when making choices. They follow their heart and make decisions based on their internal system of values. It is important for ENFPs to act true to themselves and their principles. Although this cognitive function tends to be a weaker aspect of the ENFP personality, it is focused on organizing information, working through problems, and enforcing order in a logical, practical manner. This function tends to have a more minimized influence on the ENFP personality type, but ENFPs express this function by recalling past experiences to form expectations for future events.

ENFP Hobbies, Interests, and Careers Because of their creative nature and need for flexibility, ENFPs are commonly found in careers in religion, entertainment, and the arts. They are driven, inspired individuals who enjoy taking on problems that call for imaginative, original solutions. They make great journalists, actors, musicians, and politicians. Additionally, ENFPs often choose careers in nonprofits, public service, counseling, education, customer or public relations as these jobs tend to align with their core values. They are highly sensitive to people’s feelings and needs, and they tend to be most passionate about careers that enable them to help other people reach their full potential. In their free time, ENFPs enjoy writing, creating art, playing musical instruments, listening to music, participating in community theater, and reading fiction. ENFP Work Environments The ideal work environment for an ENFP is one that is relaxed and flexible with few restrictions on creativity. They dislike predictability, regimentation, and repetitions and tend to avoid careers that involve completing a lot of detailed, routine tasks. They prefer a workplace where they can set their own schedule, explore new ideas, and use their imaginations in an unstructured way.

They enjoy working on a team and establishing connections with the other employees. They even tend to treat their colleagues not just as coworkers but also as friends. They appreciate an environment where everyone is treated as equals, and they tend to struggle in environments where they are micromanaged or strictly controlled. ENFP Personal Relationships ENFPs love spending time with other people. They feel invigorated and energized when socializing with others, and they are able to draw just about anyone into a conversation. They even feel a sense of gratification when they are able to pull someone out of their shell and watch them gradually open up. They cherish their relationships deeply and have a longing for emotional connection. ENFPs are empathetic and insightful individuals who are able to bring out the best in almost every person they meet. They are naturally upbeat and enthusiastic, and they love getting to know other people and understanding what drives them. ENFPs are generous, supportive, and considerate in friendships and relationships and will go to great lengths to care for their loved ones. ENFPs are dedicated to their relationships - whether with a friend or a partner. They tend to fall in love fast and hard, and can become insecure when they feel their partner’s ardor does not match their own. Tips for Interacting With ENFPs Friendships ENFPs are not too particular in who they befriend as their approachable personalities draw in such a wide variety of people. They crave friends who are open-minded and adventurous, but also welcome those who are more shy or reserved. You can strengthen your relationship with an ENFP by opening up emotionally and being a support system. Relationships In relationships, ENFPs tend to feel more energized in the exciting and unpredictable honeymoon stages so they need a partner who is able to keep the romance alive by looking for new ways to bring excitement and adventure into the partnership. Parenting As parents, ENFPs typically have deep, loving relationships with their kids. They encourage their children to embrace their passions and interests and express themselves freely. They tend not to be strong disciplinarians and do not impart many rules or guidelines in the household, but rather they prioritize imparting their strong system of values on their children. Take the MBTI (Paper Version) References King, S. P., & Mason, B. A. (2020). Myers-Briggs Type Indicator. The Wiley Encyclopedia of Personality and Individual Differences: Measurement and Assessment, 315-319. Myers, I. B. (1962). The Myers-Briggs Type Indicator: Manual (1962). Myers, K. D., & Kirby, L. D. (2015). Introduction to type: A guide to understanding your results on the MBTI assessment . Sunnyvale, CA: CPP.



What is enfp personality type. What personality type is similar to enfp. What personality type is best for enfp. What kind of personality is enfp.

ENTP, an acronym from the Myers-Briggs Type Indicator (MBTI), stands for Extraversion, Intuition, Thinking, and Perceiving. ENTPs are dynamic, innovative, and imaginative, thriving on interaction and exploring abstract possibilities. They prefer logical analysis over emotional considerations and value flexibility and spontaneity. Often seen as strategic thinkers and unafraid innovators, they might struggle with routine tasks and come off as argumentative due to their lively minds. ENFP Meaning ENFPs thrive on social engagement (Extraversion), lean towards visionary thinking and possibilities rather than concrete specifics (Intuition), prioritize personal values and emotional impact in their decision-making process (Feeling), and cherish flexibility and openness to new experiences (Perceiving). ENFPs are often described as warm, enthusiastic, and creative individuals. They are passionate about their interests, values, and ideas, and they have a natural ability to inspire and motivate others. ENFP are supportive and appreciative of their loved ones and are often described as charismatic and charming. They often have a strong artistic side and a unique mastery of language.





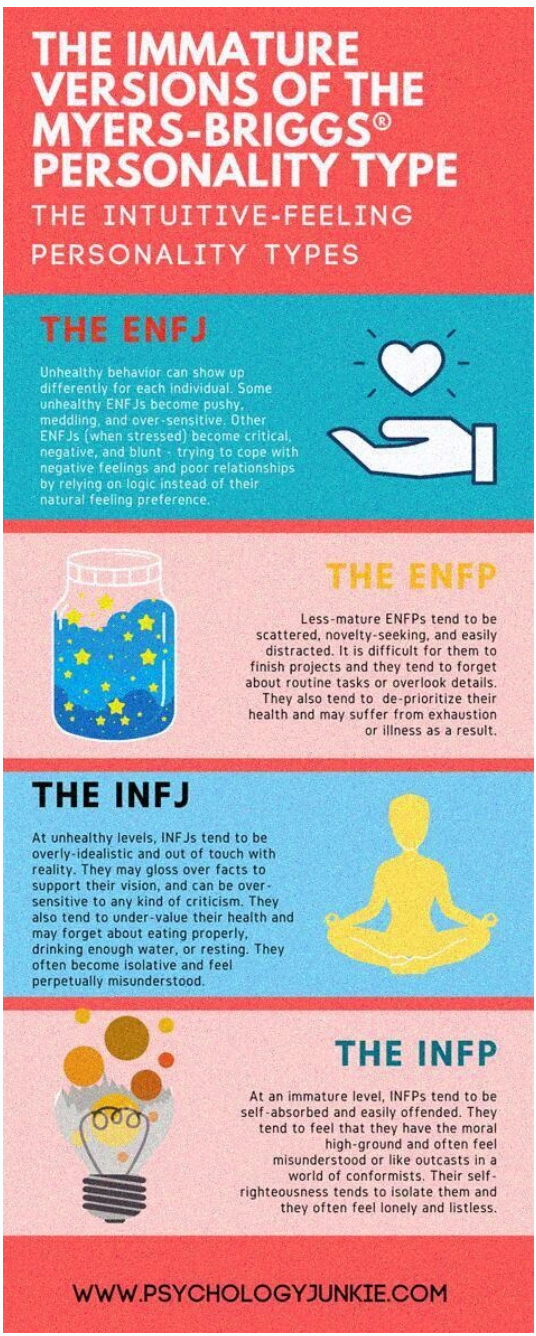
What personality type is similar to enfp. What personality type is best for enfp. What kind of personality is enfp.

ENTP, an acronym from the Myers-Briggs Type Indicator (MBTI), stands for Extraversion, Intuition, Thinking, and Perceiving. ENTPs are dynamic, innovative, and imaginative, thriving on interaction and exploring abstract possibilities. They prefer logical analysis over emotional considerations and value flexibility and spontaneity. Often seen as strategic thinkers and unafraid innovators, they might struggle with routine tasks and come off as argumentative due to their lively minds.



What is enfp personality like. What personality is compatible with enfp. What is enfp personality type. What personality type is similar to enfp. What personality type is best for enfp. What kind of personality is enfp.

ENTP, an acronym from the Myers-Briggs Type Indicator (MBTI), stands for Extraversion, Intuition, Thinking, and Perceiving. ENTPs are dynamic, innovative, and imaginative, thriving on interaction and exploring abstract possibilities. They prefer logical analysis over emotional considerations and value flexibility and spontaneity. Often seen as strategic thinkers and unafraid innovators, they might struggle with routine tasks and come off as argumentative due to their lively minds. ENFP Meaning ENFPs thrive on social engagement (Extraversion), lean towards visionary thinking and possibilities rather than concrete specifics (Intuition), prioritize personal values and emotional impact in their decision-making process (Feeling), and cherish flexibility and openness to new experiences (Perceiving). ENFPs are often described as warm, enthusiastic, and creative individuals. They are passionate about their interests, values, and ideas, and they have a natural ability to inspire and motivate others. ENFP are supportive and appreciative of their loved ones and are often described as charismatic and charming. They often have a strong artistic side and a unique mastery of language. They have excellent people and communication skills and gain energy from being in the company of others. They are free spirits with an optimistic and lively approach to life. However, they might also struggle with overthinking, become easily stressed, and may tend to neglect routine or practical matters. They can be highly emotional and sensitive to criticism. Famous ENTPs include Bill Clinton, Mark Twain, Dr. Suess, Drew Barrymore, Ellen DeGeneres, Ron Weasley, and Julie Andrews. ENFP is a fairly common personality type, and is the fifth most common among women. ENFPs make up: 8% of the general population 6% of men 10% of women ESFJs are sometimes referred to as “the Champion” or “the Campaigner.” ISTJ is the opposite personality type of ENFP. Strengths Weaknesses Outgoing and carefree Disorganized Empathetic Hypersensitive Outgoing and carefree Overthinks Highly creative Seek approval from others Strong social and communication skills Struggle to follow through on their ideas ENTP Characteristics People with the ENFP personality type are highly imaginative and innovative They thrive in situations where they have creative freedom, and they are great at generating original ideas. They are expressive communicators and enjoy discovering the deeper meaning in people and ideas. They can be quite introspective, contemplating the creative possibilities of life. They are always looking for a novel way to do things and refuse to follow the traditional path. ENFPs are enthusiastic, people-centered individuals They are energized by time spent with other people and have a unique passion for helping others explore their potential. They love to talk with just about anyone, learning about what motivates and inspires them and what their dreams and aspirations are. They crave meaningful, deep connections with people and are highly attuned to other people’s feelings and needs. They are excellent communicators, and their warmhearted, approachable personalities enable them to have captivating conversations with all types of people. ENTPs are known to be laid-back and easy going They are non-judgmental and open-minded and like to use their banter and quick wit to analyze and understand other people. They deal well with change and are able to adapt well to any circumstances that might arise throughout their lives. However, ENTPs are also disorganized and seemingly untethered. They become bored easily and struggle with strict routines and schedules. ENFPs are natural-born leaders, standing up for what they believe in without hesitation or apology They are confident in their abilities to handle demanding responsibilities and will eagerly assume leadership positions. ENFPs are spontaneous and highly adaptable to change They strongly dislike routine and prefer having freedom and flexibility in their everyday lives. They often struggle to see things through to completion as they have ever-evolving interests and can become easily bored and stressed out with an old project. Cognitive Functions The MBTI suggests that the four different cognitive functions (thinking, feeling, intuition, and sensing) form a hierarchy where each function is either directed outwardly (extroverted) or inwardly (introverted). The order of these functions determines one’s personality. The dominant function is the primary aspect of personality, while the auxiliary and tertiary functions play supportive roles. ENFPs are abstract, creative thinkers who focus on the infinite possibilities of life and avoid any inconsequential, trivial details. They are inventive and imaginative with a knack for discovering unique connections and patterns among people, places, and ideas.



What is enfp personality like. What personality is compatible with enfp. What is enfp personality type. What personality type is similar to enfp. What personality type is best for enfp. What kind of personality is enfp.

ENTP, an acronym from the Myers-Briggs Type Indicator (MBTI), stands for Extraversion, Intuition, Thinking, and Perceiving. ENTPs are dynamic, innovative, and imaginative, thriving on interaction and exploring abstract possibilities. They prefer logical analysis over emotional considerations and value flexibility and spontaneity. Often seen as strategic thinkers and unafraid innovators, they might struggle with routine tasks and come off as argumentative due to their lively minds. ENFP Meaning ENFPs thrive on social engagement (Extraversion), lean towards visionary thinking and possibilities rather than concrete specifics (Intuition), prioritize personal values and emotional impact in their decision-making process (Feeling), and cherish flexibility and openness to new experiences (Perceiving). ENFPs are often described as warm, enthusiastic, and creative individuals. They are passionate about their interests, values, and ideas, and they have a natural ability to inspire and motivate others. ENFP are supportive and appreciative of their loved ones and are often described as charismatic and charming. They often have a strong artistic side and a unique mastery of language. They have excellent people and communication skills and gain energy from being in the company of others. They are free spirits with an optimistic and lively approach to life. However, they might also struggle with overthinking, become easily stressed, and may tend to neglect routine or practical matters. They can be highly emotional and sensitive to criticism. Famous ENTPs include Bill Clinton, Mark Twain, Dr. Suess, Drew Barrymore, Ellen DeGeneres, Ron Weasley, and Julie Andrews. ENFP is a fairly common personality type, and is the fifth most common among women. ENFPs make up: 8% of the general population 6% of men 10% of women ESFJs are sometimes referred to as “the Champion” or “the Campaigner.” ISTJ is the opposite personality type of ENFP. Strengths Weaknesses Outgoing and carefree Disorganized Empathetic Hypersensitive Outgoing and carefree Overthinks Highly creative Seek approval from others Strong social and communication skills Struggle to follow through on their ideas ENTP Characteristics People with the ENFP personality type are highly imaginative and innovative They thrive in situations where they have creative freedom, and they are great at generating original ideas. They are expressive communicators and enjoy discovering the deeper meaning in people and ideas. They can be quite introspective, contemplating the creative possibilities of life. They are always looking for a novel way to do things and refuse to follow the traditional path. ENFPs are enthusiastic, people-centered individuals They are energized by time spent with other people and have a unique passion for helping others explore their potential. They love to talk with just about anyone, learning about what motivates and inspires them and what their dreams and aspirations are. They crave meaningful, deep connections with people and are highly attuned to other people’s feelings and needs. They are excellent communicators, and their warmhearted, approachable personalities enable them to have captivating conversations with all types of people. ENTPs are known to be laid-back and easy going They are non-judgmental and open-minded and like to use their banter and quick wit to analyze and understand other people. They deal well with change and are able to adapt well to any circumstances that might arise throughout their lives. However, ENTPs are also disorganized and seemingly untethered. They become bored easily and struggle with strict routines and schedules. ENFPs are natural-born leaders, standing up for what they believe in without hesitation or apology They are confident in their abilities to handle demanding responsibilities and will eagerly assume leadership positions. ENFPs are spontaneous and highly adaptable to change They strongly dislike routine and prefer having freedom and flexibility in their everyday lives. They often struggle to see things through to completion as they have ever-evolving interests and can become easily bored and stressed out with an old project. Cognitive Functions The MBTI suggests that the four different cognitive functions (thinking, feeling, intuition, and sensing) form a hierarchy where each function is either directed outwardly (extroverted) or inwardly (introverted). The order of these functions determines one’s personality. The dominant function is the primary aspect of personality, while the auxiliary and tertiary functions play supportive roles. ENFPs are abstract, creative thinkers who focus on the infinite possibilities of life and avoid any inconsequential, trivial details. They are inventive and imaginative with a knack for discovering unique connections and patterns among people, places, and ideas. ENFPs tend to prioritize their own emotions and feelings rather than logic and fact when making choices. They follow their heart and make decisions based on their internal system of values. It is important for ENFPs to act true to themselves and their principles. Although this cognitive function tends to be a weaker aspect of the ENFP personality, it is focused on organizing information, working through problems, and enforcing order in a logical, practical manner. This function tends to have a more minimized influence on the ENFP personality type, but ENFPs express this function by recalling past experiences to form expectations for future events. ENFP Hobbies, Interests, and Careers Because of their creative nature and need for flexibility, ENFPs are commonly found in careers in religion, entertainment, and the arts. They are driven, inspired individuals who enjoy taking on problems that call for imaginative, original solutions. They make great journalists, actors, musicians, and politicians. Additionally, ENFPs often choose careers in nonprofits, public service, counseling, education, customer or public relations as these jobs tend to align with their core values. They are highly sensitive to people’s feelings and needs, and they tend to be most passionate about careers that enable them to help other people reach their full potential. In their free time, ENFPs enjoy writing, creating art, playing musical instruments, listening to music, participating in community theater, and reading fiction. ENFP Work Environments The ideal work environment for an ENFP is one that is relaxed and flexible with few restrictions on creativity. They dislike predictability, regimentation, and repetitions and tend to avoid careers that involve completing a lot of detailed, routine tasks. They prefer a workplace where they can set their own schedule, explore new ideas, and use their imaginations in an unstructured way. They enjoy working on a team and establishing connections with the other employees. They even tend to treat their colleagues not just as coworkers but also as friends. They appreciate an environment where everyone is treated as equals, and they tend to struggle in environments where they are micromanaged or strictly controlled. ENFP Personal Relationships ENFPs love spending time with other people. They feel invigorated and energized when socializing with others, and they are able to draw just about anyone into a conversation. They even feel a sense of gratification when they are able to pull someone out of their shell and watch them gradually open up. They cherish their relationships deeply and have a longing for emotional connection. ENFPs are empathetic and insightful individuals who are able to bring out the best in almost every person they meet. They are naturally upbeat and enthusiastic, and they love getting to know other people and understanding what drives them. ENFPs are generous, supportive, and considerate in friendships and relationships and will go to great lengths to care for their loved ones. ENFPs are dedicated to their relationships – whether with a friend or a partner. They tend to fall in love fast and hard, and can become insecure when they feel their partner’s ardor does not match their own. Tips for Interacting With ENFPs Friendships ENFPs are not too particular in who they befriend as their approachable personalities draw in such a wide variety of people. They crave friends who are open-minded and adventurous, but also welcome those who are more shy or reserved. You can strengthen your relationship with an ENFP by opening up emotionally and being a support system. Relationships in Relationships, ENFPs tend to feel more energized in the exciting and unpredictable honeymoon stages so they need a partner who is able to keep the romance alive by looking for new ways to bring excitement and adventure into the partnership. Parenting As parents, ENFPs typically have deep, loving relationships with their kids. They encourage their children to embrace their passions and interests and express themselves freely. They tend not to be strong disciplinarians and do not impart many rules or guidelines in the household, but rather they prioritize imparting their strong system of values on their children. Take the MBTI (Paper Version) References King, S. P., & Mason, B. A. (2020). Myers-Briggs Type Indicator. The Wiley Encyclopedia of Personality and Individual Differences: Measurement and Assessment, 315-319. Myers, I. B. (1962). The Myers-Briggs Type Indicator: Manual (1962). Myers, K. D., & Kirby, L. D. (2015). Introduction to type: A guide to understanding your results on the MBTI assessment. Sunnyvale, CA: CPP. Myers-Briggs Type Indicator. (2019, May 28). New World Encyclopedia, . Retrieved from . Myers, Isabel B.; Myers, Peter B. (1995) (1980). Gifts Differing: Understanding Personality Type. Mountain View, CA: Davies-Black Publishing. ISBN 978-0-89106-074-1. Pittenger, D. J. (2005). Cautionary Comments Regarding the Myers-Briggs Type Indicator. Consulting Psychology Journal: Practice and Research, 57(3), 210-221. The purpose of the Myers-Briggs Type Indicator®. The Myers & Briggs Foundation: MBTI Basics. (n.d.). Retrieved from Author: April 8, 2022mbg Spirituality & Relationships EditorSarah Regan is a Spirituality & Relationships Editor, and a registered yoga instructor. She received her bachelor's in broadcasting and mass communication from SUNY Oswego, and lives in Buffalo, New York.According to the Myers-Briggs Type Indicator (MBTI), each of us falls under one of 16 personality types. And of all 16 personalities, there are few more energetic or enthusiastic in terms of expressing themselves than the ENFP type.The ENFP personality type.ENFP stands for extroverted, intuitive, feeling, and perceiving. This personality type makes up 8% of the world's population, with more women than men (10% of women are ENFPs versus 6% of men).As Michael Segovia, a senior consultant at The Myers-Briggs Company, explains to mbg, ENFPs are known to be spontaneous, creative, personable, energetic, and future-focused. And John Hackston, head of thought leadership at The Myers-Briggs Company, adds that they're also enthusiastic, caring, and people-centered.These folks love to try or share new things, from ideas to experiences, but they can have some difficulty with follow-through. And Segovia adds that they're also likely to feel overwhelmed or have a sudden change in emotions if they're forced to make a decision before they're ready for it.ENFPs have an unmistakable enthusiasm in their approach to things, from a new passion project to meeting new people. "They are enthusiastic instigators of projects, but may become bored, or excited by another new idea, and leave things unfinished," Hackston tells mbg.This type also enjoys variety, spontaneity, and having a "go with the flow" attitude—hence the difficulty with staying on track. "They love sharing new ideas and possibilities with other people [and] looking for adventures and novel experiences," Hackston explains.Hackston notes that ENFPs are also creative thinkers, with a focus on the big picture. They can think abstractly and have a strong capacity to create, though they don't always catch important details. "They may see new connections that others do not, helping them to be more aware of what is going on around them—however, they may occasionally see links that do not actually exist, seeing a hidden agenda where nothing of the sort is intended," Hackston explains.ENFPs have a charisma about them that makes them naturally inspiring and motivating to be around, according to both Hackston and Segovia. "People who have ENFP preferences are natural motivators, enjoy new challenges, and inspire others either in their professional setting or in their personal life," Segovia says. They are also guided by a strong core of personal values, Hackston adds.One last telltale trait of an ENFP is their ability to adapt and be flexible in a variety of scenarios, or with all kinds of people. As Segovia explains, this type is often described as adaptable to change, "and they like to keep their options open."PersonableCreativeInspiringBig-picture thinkersFlexibleCaringValues-drivenEasily overwhelmedCan miss important detailsDifficulty staying on taskOverthinkingSeeing connections that don't existSeeking approval from othersThe way ENFPs behave in relationships is reflective of their spontaneous and flexible personality. As Segovia explains, they like to meet new people, hear different points of view, and consider their options before settling down with someone long term.They tend to be



supportive and good listeners, making their partners feel seen and appreciated, he notes, adding that meaningful conversations to share dreams, feelings, and thoughts matter—to them deeply.According to Hackston, while they want to feel a deep connection to a romantic partner, they also want someone they can have fun with. "This may be overwhelming or too intense for some people, so the ideal romantic partner is likely to be someone who either reciprocates these characteristics—another ENFP, for example—or someone happy to be spontaneous and go with the flow" (aka likely another perceiving type). And as Segovia adds, ENFPs can be "more difficult to be understood by types that value stability and routine." Statistically speaking, research has shown that people who have intuition and feeling in common have a greater than 70% chance of compatibility. That means an ENFP will be most compatible with an ENFJ, INFJ, INFP, or another ENFP.When it comes to ENFPs and their careers, the love of spontaneity and trying new things holds true. And according to Hackston, they also make supportive and empathetic colleagues, enjoying working with others. "They are looking for variety, new challenges, and the opportunity to be creative. They want a connection to other people, and to work in a job and for an organization that fits with their values," he explains.Hackston and Segovia also note that it's not uncommon for an ENFP to change careers, and even career paths, multiple times throughout their life. Ultimately, they're creative problem solvers and thrive by learning new things and thinking outside the box, Segovia says. "They feel attracted by the opportunity of working alongside different people—especially those who also express their creativity when facing challenges," he adds.ENFPs like the freedom to follow their own process, so deadlines can be stressful for them. Because of this, ENFPs may find themselves interested in entrepreneurship, Segovia tells mbg. And as Hackston adds, they're also attracted to jobs where they can motivate and inspire others, combine innovation with teamwork and their values, and of course, be creative or even artsy.Careers well suited for ENFPs:CoachTeacherMotivational speakerEntrepreneurCharity workEthical startupsHow to thrive as an ENFP.To thrive as an ENFP, Hackston says it's important that this type remembers they can say no, even if something new piques their interest. "Don't overextend yourself," he explains. "Take a moment to think about what really matters to you. What are your values? What will help you to achieve these, and what gets in the way? What can you do about this?"Segovia echoes this point, adding to be aware of other commitments so you don't bounce around, overcommit, or overwhelm yourself. And speaking of overwhelming, "Schedules and deadlines are generally inevitable in the workplace, so try to create mechanisms to balance them with your creative process to avoid stress triggers," he adds.And lastly, according to Segovia, its important ENFPs remember to honor who they are first and foremost, "while learning how to flex to the opposite side of your preferences when the situation calls for it" (i.e., tapping into your logic or "thinking" when the "feeling" side is running the ship).Every Myers-Briggs type has its strengths and weaknesses, and ENFPs are no exception. They're spontaneous, inspiring, and creative forces to have in your life—just don't be surprised if they tend to overthink, gloss over details, or become easily overwhelmed.