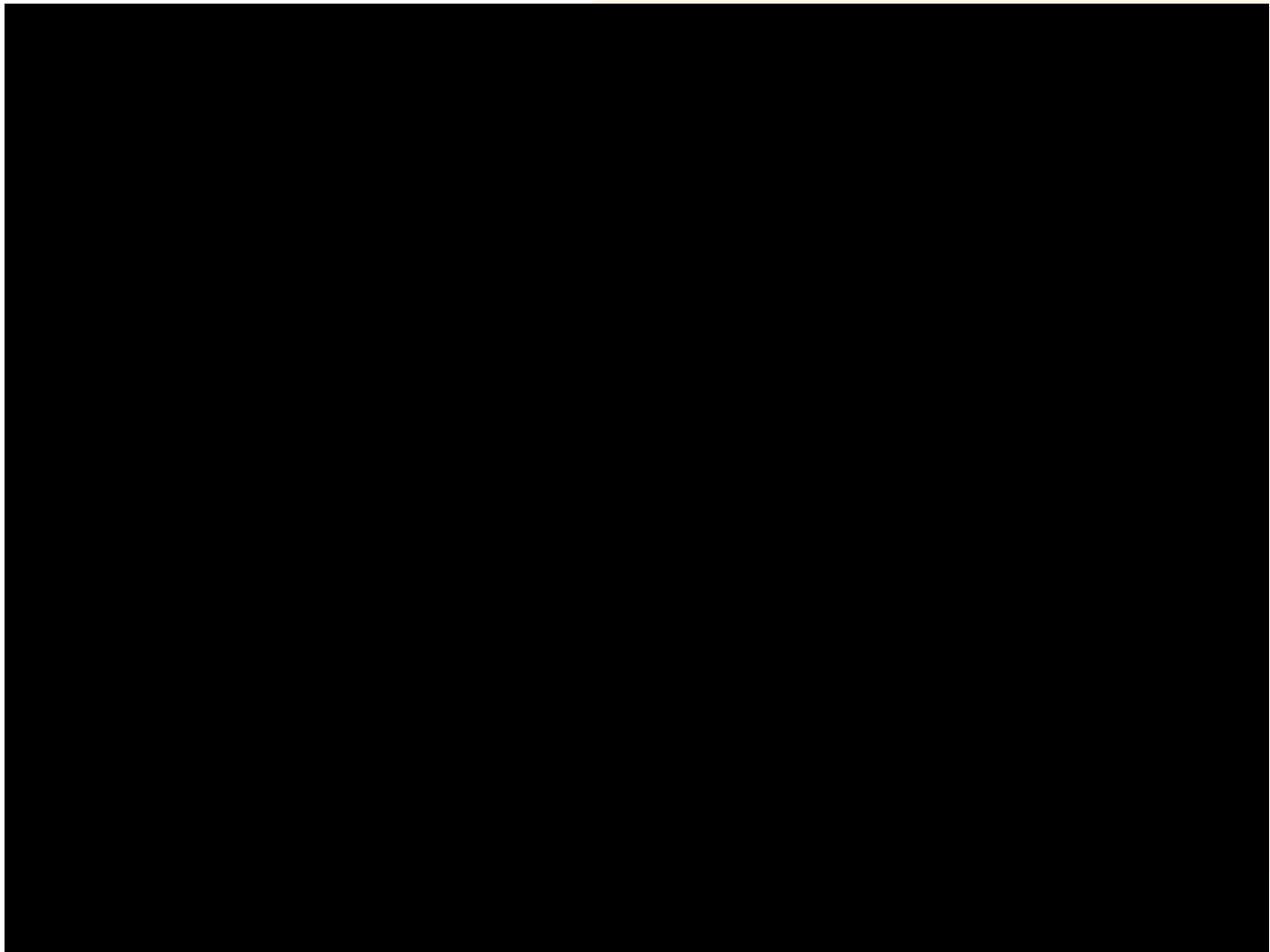
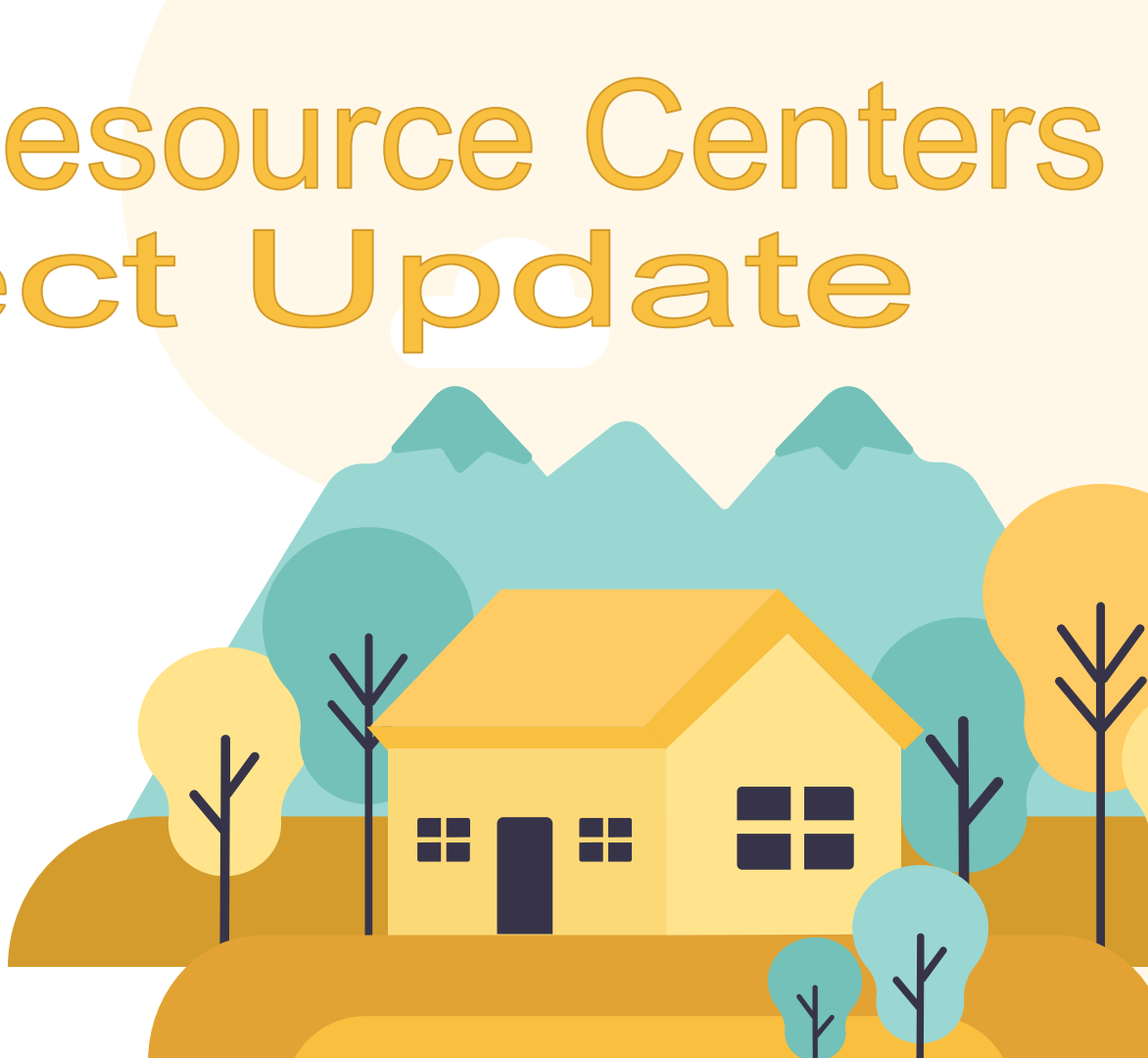
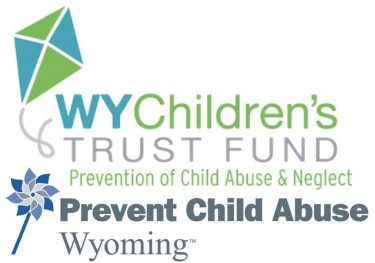


Family Resource Centers Project Update



# Family Resource Centers Project Update



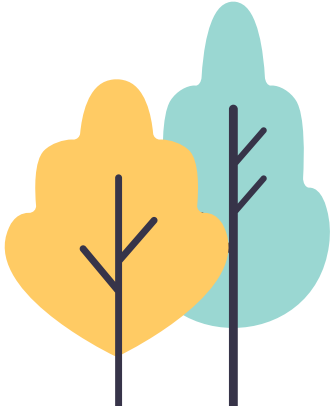
Project Leaders:



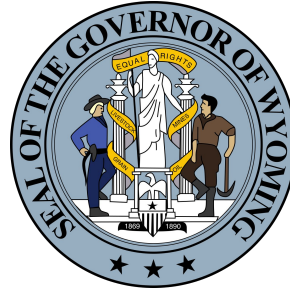


Where in Wyoming are you?

- EVOLUTION of PROJECT
- FAMILY RESOURCE CENTERS
- IMPLEMENTATION
- NEXT STEPS



PROJECT EVOLUTION



**Governor's Health  
Task Force**



Wyoming communities lack a coordinated, “no wrong door”, human services system. Siloed approaches to delivery of services, agency duplication, and gaps in data sharing create barriers for Wyomingites. In addition, Wyoming lacks the coordination of human services data across community organizations.

—Problem Statement





Because of this, the Governor's Health Task Force identified that multi-generational family resource centers, if established or strengthened, can address the gaps in human service access for Wyominites.

—Solution Statement

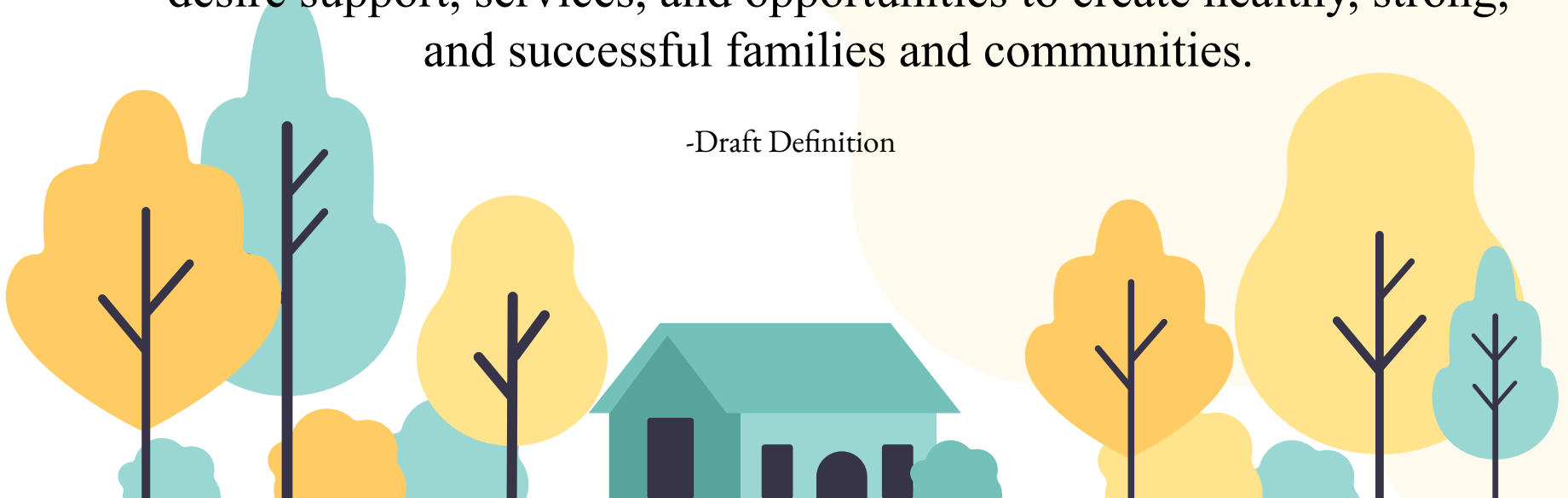


**Family Resource Center (FRC)** is a common name used however these centers may be called other names such as Family **Support** Center, Family **Success** Center, and Parent **Resource** Center.



**Family Resource Centers in Wyoming** are collaborative, community-based entities, with an individualized, family-centered approach. They provide on-site, targeted programs, services, resources, activities, and classes to strengthen families and Wyoming communities. These facilities welcome community members who desire support, services, and opportunities to create healthy, strong, and successful families and communities.

-Draft Definition



FRCs use a multi-generational approach to put families at the center of their services. Examples of services provided at FRCs include:

- **Parent Education and Enrichment Programs**
- **Youth and Child Development Programs**
- **Child Care Referral and Resources**
- **Home Visitation**
- **Concrete Support Assistance**
- **Resource Linkage and Referral**
- **Health and Wellness Programs and Activities**



FRCs are generally community-based drop-in centers that may be co-located or a stand-alone center. Examples of FRC Locations:

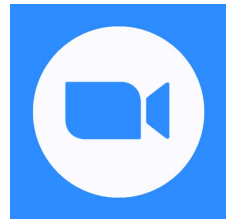
- **Community Centers**
- **Schools**
- **Libraries**
- **Faith-based Organizations**
- **Mobile**





# Family Voice: Community Needs

1. Transportation-inability to access services.
2. Housing-lack of affordability and availability.
3. Mental health and substance abuse treatment-lack of services, excessive wait times, and lack of choices in providers.
4. Childcare-affordability and accessibility.
5. Lack of knowledge of available resources.



**PROJECT**

# Implementation







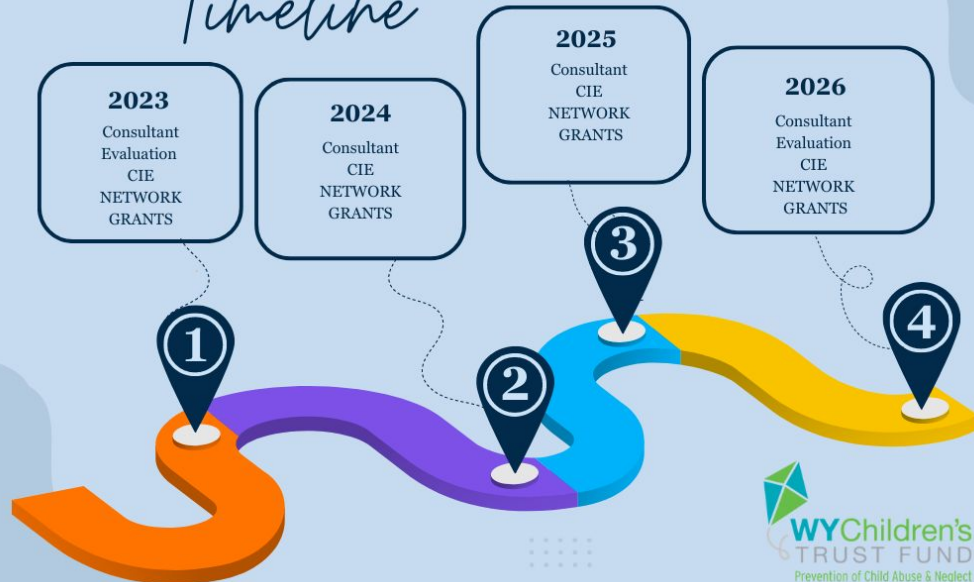
## PROJECT OUTLINE

The project has two primary **goals**:

- Create a **statewide network** whose focus will be to provide technical assistance and best practices for communities who receive family resource center grants.
- Provide **grants** to individual Wyoming communities to help establish and/or strengthen family resource centers and develop a structure for collecting and monitoring family resource center data.

# FRC PROJECT

## Timeline



## WHAT FUNDING DO WE NOW HAVE?



WYOMING DEPARTMENT  
OF FAMILY SERVICES

**Preschool Development Grant**  
**\$100,000**

 **Wyoming Preschool  
Development Grant**

**ARPA BILL**  
**Family Resource Centers**

**\$2.75 Million**

**Child Care ARPA Funds**

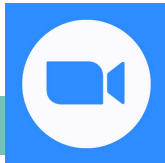
Supplemental Child Care and  
Development Fund (CCDF)  
Discretionary Funds Appropriated in  
the American Rescue Plan (ARP) Act  
of 2021 (Public Law 117-2) signed  
into law March 11, 2021.

**\$2 Million**



Funding Source	Objectives	2023	2024	2025	2026	TOTAL
Preschool Development Grant (PDG)	FRC Consultant, Standards Training	\$100,000	\$0	\$0	\$0	\$100,000
ARPA Supplemental Child Care & Development Funds - Original	WyCAN, Community Grants, Consultant	\$550,000	\$1,450,000	\$0	\$0	\$2,000,000
ARPA Direct (2023) HB 0195	WYCAN, Community Grants, Consultant	\$0	\$0	\$1,375,000	\$1,375,000	\$2,750,000
						<b>\$4,850,000</b>

<b>Major Expenditure Area</b>	<b>Funding Source</b>	<b>2023</b>	<b>2024</b>	<b>2025</b>	<b>2026</b>	<b>TOTAL</b>
<b>Community Grants to Establish or Enhance Family Resource Centers</b>	ARPA CCD: 1,677,500 (Spend by September 2024) ARPA Direct: 2,304,500 (Spend by September 2026)					
	ARPA Round 2			1,154,000	1,154,000	2,308,000
	ARPA CCDF	500,000	1,177,500			1,677,500
<b>Sub-Total</b>	<b>All Sources</b>	<b>500,000</b>	<b>1,177,500</b>	<b>1,154,000</b>	<b>1,154,000</b>	<b>3,985,500</b>



What is next?

Environmental  
Scan

ACES Training

Connect to  
211

Evaluation

National  
Standards  
Training

Protective Factors  
Training & Survey  
Implementation

FRC Network

Grant  
Applications




## What is next?



### Environmental Scan

Report will be available in August.

Provides information on already existing community partnerships, gaps and opportunities for collaboration.



### National Standards Training

National Family Support Network.

1st Training was held July 6 and July 7.  
More opportunities to come.




## What is next?



### ACES Training

30 Master Trainers across Wyoming.

ACES Training for Executive, Legislative, and Judicial Branches.



### Protective Factors Training & Survey Implementation

20 Protective Factors Trainers across Wyoming.


Implementing Protective Factors Survey to collect statewide data.





## What is next?

Training on how to utilize Wyoming 211 as organizations and communities.



Connect to  
211

Training and Technical Assistance.

Connecting providers within the community and across Wyoming.



FRC Network

Supporting the people supporting the families.

Training and Grants

## What is next?

1. Transportation-inability to access services.
2. Housing-lack of affordability and availability.
3. Mental health and substance abuse treatment-lack of services, excessive wait times, and lack of choices in providers.
4. Childcare-affordability and accessibility.
5. Lack of knowledge of available resources.

RFP to select Evaluator

Identify key indicators for provider, community and statewide data collection

Evaluation


Open to public and private organizations

Family Serving Organizations

Grant Applications



- Open to Public and Private Family Serving Organizations
- **Letter of Intent** will be due in August stating your organization is interested in:
  - **Training and Technical Assistance**
    - Connecting with 211
    - Protective Factors Training
    - Protective Factors Survey and Database
    - Adverse Childhood Experiences Study
    - National Standards Training
  - **Grant Funding**



Grant  
Applications

## Technical Assistance: Application



# Let's stay connected!

**<https://pcawy.org/frc>**

# QUESTIONS



# FRC Resources

FRIENDS: <https://friendsnrc.org/prevention/family-resource-and-support-center/>

New York Evaluation Brief: <https://friendsnrc.org/evaluation/sharing-data/>

Child Welfare Information Gateway:

<https://www.childwelfare.gov/topics/preventing/prevention-programs/familyresource/>

Casey Family Programs: <https://www.casey.org/family-resource-centers/>

National Family Support Network:

<https://www.nationalfamilysupportnetwork.org/family-support-programs>

# Thanks for your support



CREDITS: This presentation template was created by **Slidesgo**, including icons by **Flaticon**, and infographics & images by **Freepik**.

**Please keep this slide for attribution.**

