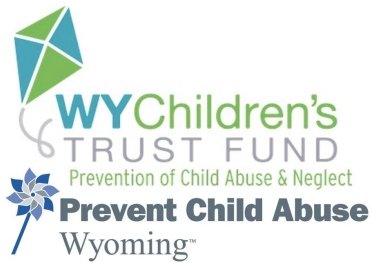
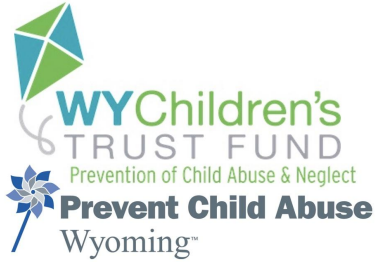


Family Resource Centers Letter of Interest



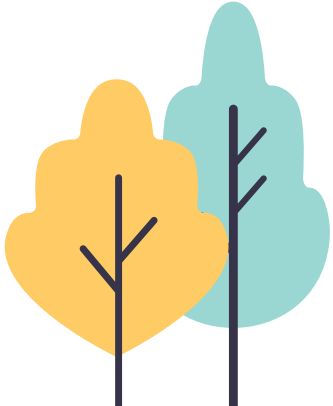
Project Leaders:





Where in Wyoming are you?

- PROJECT GOALS
- LETTER OF INTEREST
- GRANT PHASES
- NEXT STEPS



PROJECT EVOLUTION



**Governor's Health
Task Force**



WHAT FUNDING DO WE NOW HAVE?



WYOMING DEPARTMENT
OF FAMILY SERVICES

Preschool Development Grant
\$100,000



ARPA BILL
Family Resource Centers

\$2.75 Million

Child Care ARPA Funds

Supplemental Child Care and
Development Fund (CCDF)
Discretionary Funds Appropriated in
the American Rescue Plan (ARP) Act
of 2021 (Public Law 117-2) signed
into law March 11, 2021.

\$2 Million



This appropriation to the department of family services is for the purposes of developing a program to provide grants, collect and monitor data and provide technical assistance to communities to establish or strengthen family resource centers.



WYOMING DEPARTMENT
OF FAMILY SERVICES

Family Resource Centers in Wyoming are collaborative, community-based entities, with an individualized, family-centered approach. They provide on-site, targeted programs, services, resources, activities, and classes to strengthen families and Wyoming communities. These facilities welcome community members who desire support, services, and opportunities to create healthy, strong, and successful families and communities.

-WY Definition





PROJECT OUTLINE

The project has two primary **goals**:

- Create a **statewide network** whose focus will be to provide technical assistance and best practices for communities

WYOMING FAMILY RESOURCE CENTER COLLECTIVE

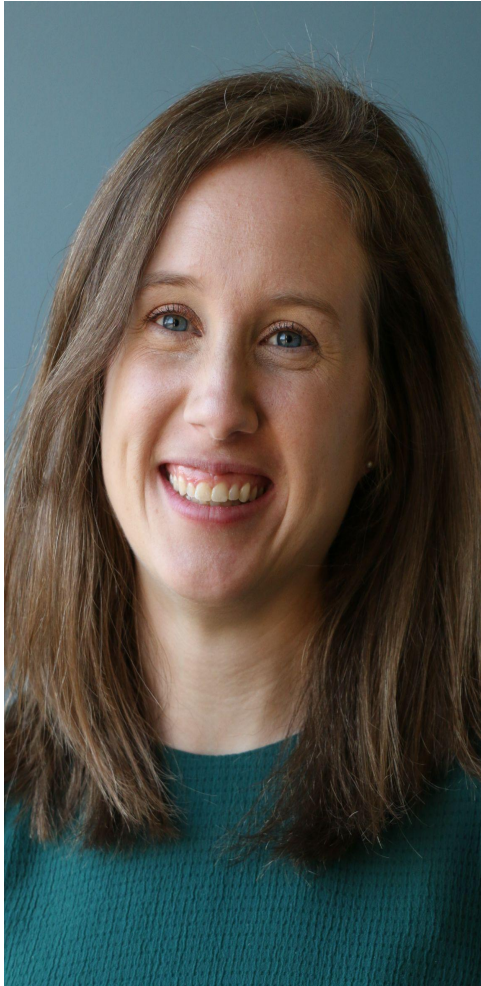
- Provide **grants** to individual Wyoming communities to help establish and/or strengthen family resource centers.



Family Resource Center Collective: Technical Assistance

The Wyoming Family Resource Center Collective has support from many state agencies, non-profits, and for-profit organizations to support grantees as they move through each phase of the grant cycle. Technical Assistance may be requested by a grantee at any time.





**Letter of Interest
Technical Assistance**

**Eighmey Zeeck
Silver Linings Consulting
Project Consultant**

Fiscal Support & Contracts



**Nicole Neider
Wyoming Children's Trust Fund
Business Office Coordinator**



County Data

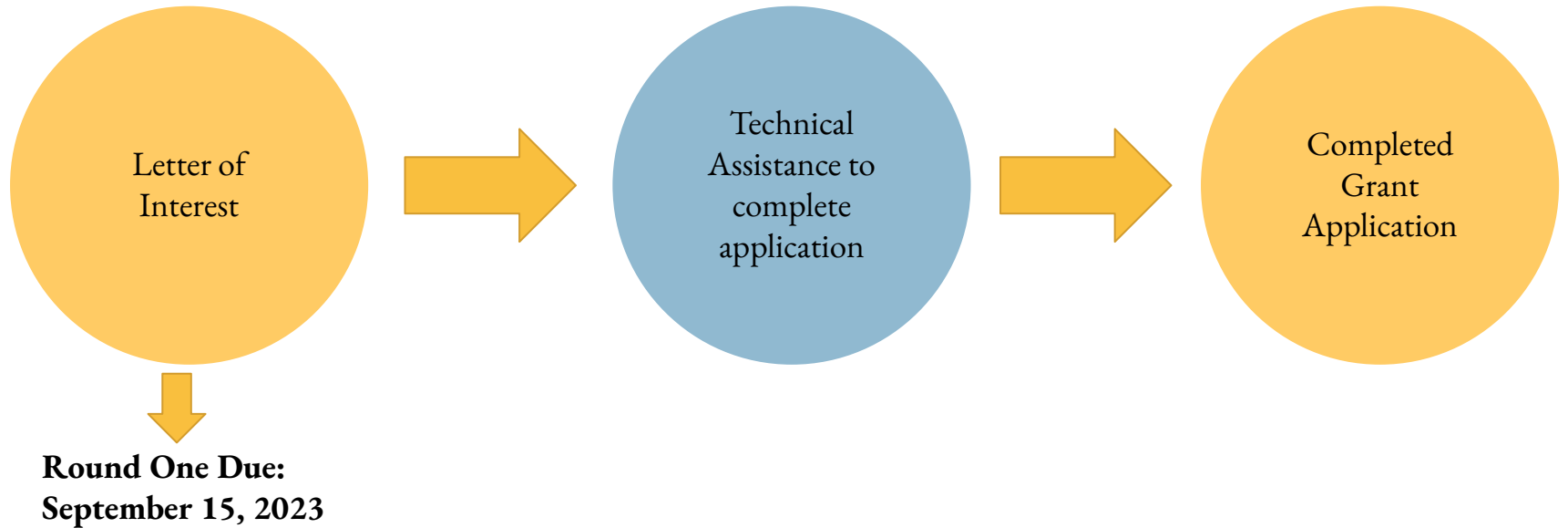
County	Total Population **	Child Population	Access*	Licensed Child Care Capacity Rate	Families Living in Poverty	Substantiated Child Maltreatment Rate	Unemployment	Food Insecurity
Albany	37,072	6,150	41.5%	.22	10.5%	.005	3.1%	12.3%
Big Horn	11,521	2,822	41.9%	.07	12.9%	.002	3.2%	10.6%
Campbell	47,026	12,539	41.3%	.14	14.6%	.012	2.9%	10.2%
Carbon	14,537	3,298	51.1%	.18	19.7%	.012	2.9%	11.2%
Converse	13,751	3,341	31.3%	.12	12.7%	.007	2.5%	9.9%
Crook	7,181	1,857	46.5%	.16	0.7%	0*	2.4%	8.7%
Fremont	39,234	9,913	38.7%	.10	19.1%	.003	3.5%	12.1%
Goshen	12,498	2,575	41.6%	.21	14.0%	.007	2.8%	9.9%
Hot Springs	4,621	949	53.9%	.18	15.1%	.019	2.7%	12.1%

COUNTY DATA CHART

SCAN ME



Technical Assistance: Application





Letter of Interest

Each applicant must meet the following criteria for funding:

1. Public or Private Organization.
2. Organization must be located within Wyoming.
3. Organization must be eligible for federal funding.
4. Organization must be family serving in one of the following areas:
 - a. Child Care Referral and Assistance
 - b. Early Childhood Education
 - c. Elementary and/or Middle School, and/or High School Education
 - d. Parent Education
 - e. Economic Assistance
 - f. Concrete Supports in Times of Need
 - g. Healthcare Assistance



Grant
Applications



Letter of Interest

- **Funding to all 23 Counties, Northern Arapaho, and Eastern Shoshone.**
- **Grant funding for the first year runs from October 2023-August of 2024 with the potential for funding to be extended to August of 2026.**
- **The maximum amount that a grantee may be awarded for the first year is \$67,100, with a maximum three year grant amount totaling \$159,420.**
- **Additional funding will be based on availability.**

LOI FORM

LETTER OF INTEREST FORM

SCAN ME



GET MORE INFORMATION AT
[PCA.WY.ORG/FRC](https://pca.wy.gov/frc)

**Round One Due:
September 15, 2023**

If you or your organization completes the Letter of Interest (LOI) form, you are not obligated to continue in the program. You can change your mind later.

GRANT FUNDING PHASES

Phase One:

Network Development & Training

Community Engagement Meetings
Logic Model/Measurement Plan
Protective Factors Training
Adverse Childhood Experiences Training
Customer Service Training
Mandatory Reporting Training
National Standards Training
Cohort Connections

Phase Two:

Community Grants

Community Informational Exchange (CIE)
Protective Factors Survey Implementation
Data Collection metrics established
National Standards Training

Phase Three:

National Standards Implementation

National Standards Training
Mentorship Training
Parent Advisory Council Training

Phase Four:

Full Resource Center Implementation

Full time staff & Main location
Parent Advisory Council Implementation

QUESTIONS



Please contact us with any questions.

<https://pcawy.org/frc>

FRC Resources

FRIENDS: <https://friendsnrc.org/prevention/family-resource-and-support-center/>

New York Evaluation Brief: <https://friendsnrc.org/evaluation/sharing-data/>

Child Welfare Information Gateway:

<https://www.childwelfare.gov/topics/preventing/prevention-programs/familyresource/>

Casey Family Programs: <https://www.casey.org/family-resource-centers/>

National Family Support Network:

<https://www.nationalfamilysupportnetwork.org/family-support-programs>

Thanks for your support



WYChildren's
TRUST FUND

Prevention of Child Abuse & Neglect

CREDITS: This presentation template was created by **Slidesgo**, including icons by **Flaticon**, and infographics & images by **Freepik**.

Please keep this slide for attribution.

