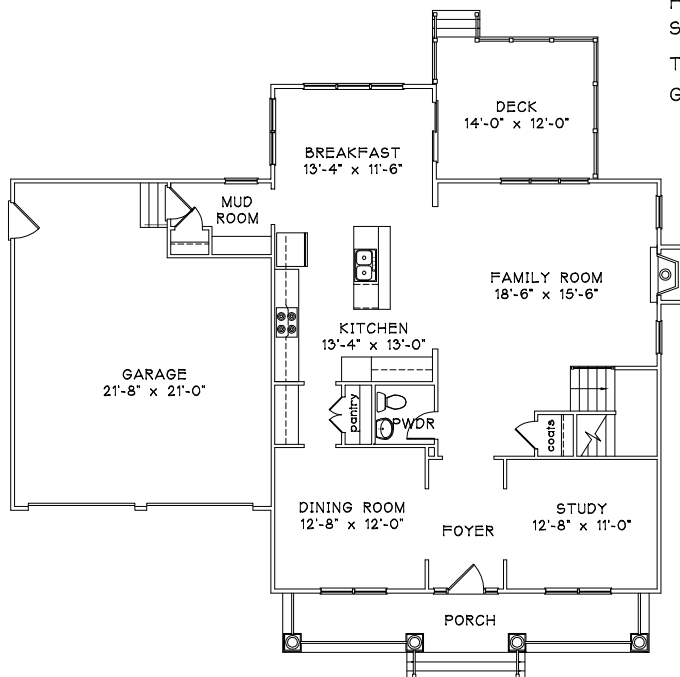


# THE VERONA

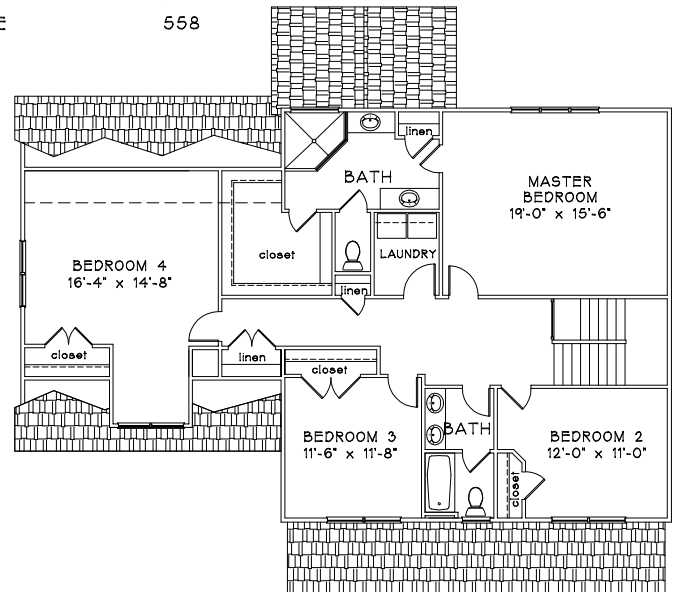


## SQUARE FOOTAGE

FIRST FLOOR	1,325
SECOND FLOOR	1,579
TOTAL	2,904
GARAGE	558



FIRST FLOOR PLAN



SECOND FLOOR PLAN

THIS RENDERING IS FOR ILLUSTRATIVE PURPOSES ONLY AND IS NOT PART OF A LEGAL CONTRACT. THIS RENDERING MAY INCLUDE A NUMBER OF OPTIONAL FEATURES, WHICH MAY BE ADDED AT AN ADDITIONAL COST TO THE PURCHASER. ACTUAL BUILDING PLANS ARE OFTEN MODIFIED TO MEET BUILDING CODES, FACILITATE MECHANICAL INSTALLATIONS AND TO INCORPORATE DESIGN IMPROVEMENTS. ALL DIMENSIONS IN THE RENDERING ARE APPROXIMATE AND MAY VARY FROM ACTUAL SPECIFICATIONS.

OCTOBER 2015



P.O. BOX 694  
PRINCE GEORGE, VA  
(804) 615-9133  
(804) 721-5940