

LOOK FOR NEW AND EXCLUSIVES

 Holland America Line®

Announcing
ALASKA
2024

Alaska Cruises & Cruisetours
May–September 2024



TABLE OF CONTENTS

- 2 WHY CRUISE HOLLAND AMERICA LINE
- 3 WHAT MAKES US DIFFERENT IN ALASKA
- 8 ALASKA UP CLOSE: OUR ONBOARD PROGRAMMING
- 13 ALASKA CRUISES
- 15 ALASKA CRUISETOURS
- 19 HAVE IT ALL EARLY BOOKING BONUS
- 20 TERMS & CONDITIONS

HOLLANDAMERICA.COM



CRUISE ALASKA WITH THE BEST



WHY CRUISING ALASKA WITH HOLLAND AMERICA LINE IS THE BEST

#1 IN GLACIER BAY

With more sailings to Glacier Bay National Park than any other cruise line, our privileged access gets you closer to the history, cultures and majesty.

DENALI & YUKON EXPERIENCE **EXCLUSIVE**

Extend your exploration inland to Alaska's majestic wilderness and remote landscapes with the comfort and service you expect from Holland America Line.

EXCURSIONS THAT BRING YOU CLOSER TO NATURE

From culture to kayaking, enjoy wildlife sanctuaries and sightseeing opportunities that connect you to the magnificent creatures, cultures, and spirit of the 49th state.

SUMMER SOLSTICE AT THE ARCTIC CIRCLE **NEW**

Circle the Arctic during the Summer Solstice and witness this spectacular celestial event from our expansive decks.

ALASKA UP CLOSE™ - ONBOARD EXPERIENCE

Our exclusive programming that brings the wildlife, people and cuisine of Alaska on board.

HAVE IT ALL EARLY BOOKING BONUS **LIMITED TIME**

Get 60% off our best amenities, with added benefits and free upgrades.



Authorized Concessioner
Glacier Bay National Park

Glacier Bay National Park & Preserve

#1 IN GLACIER BAY

Highlight of the Inside Passage and inaccessible by roadway, Glacier Bay National Park & Preserve is best explored on a Holland America Line cruise or cruisetour. As a proud Authorized Concessioner for Glacier Bay National Park, we bring expert park rangers and naturalists on board to share insights into this diverse ecosystem.

There's plenty for little nature fans on cruises to Glacier Bay too, including an exclusive Junior Ranger program for kids ages 3-12. Our ships are perfectly sized with spacious decks optimal for viewing and capturing photos of this natural wonder. You will leave Glacier Bay with both a shorter bucket list and a deeper understanding and appreciation of this UNESCO World Heritage Site.



Authorized
Concessioner
Glacier Bay National Park

Click to
SEE MORE
GLACIER BAY



Glacier Bay National Park & Preserve

EXCLUSIVE

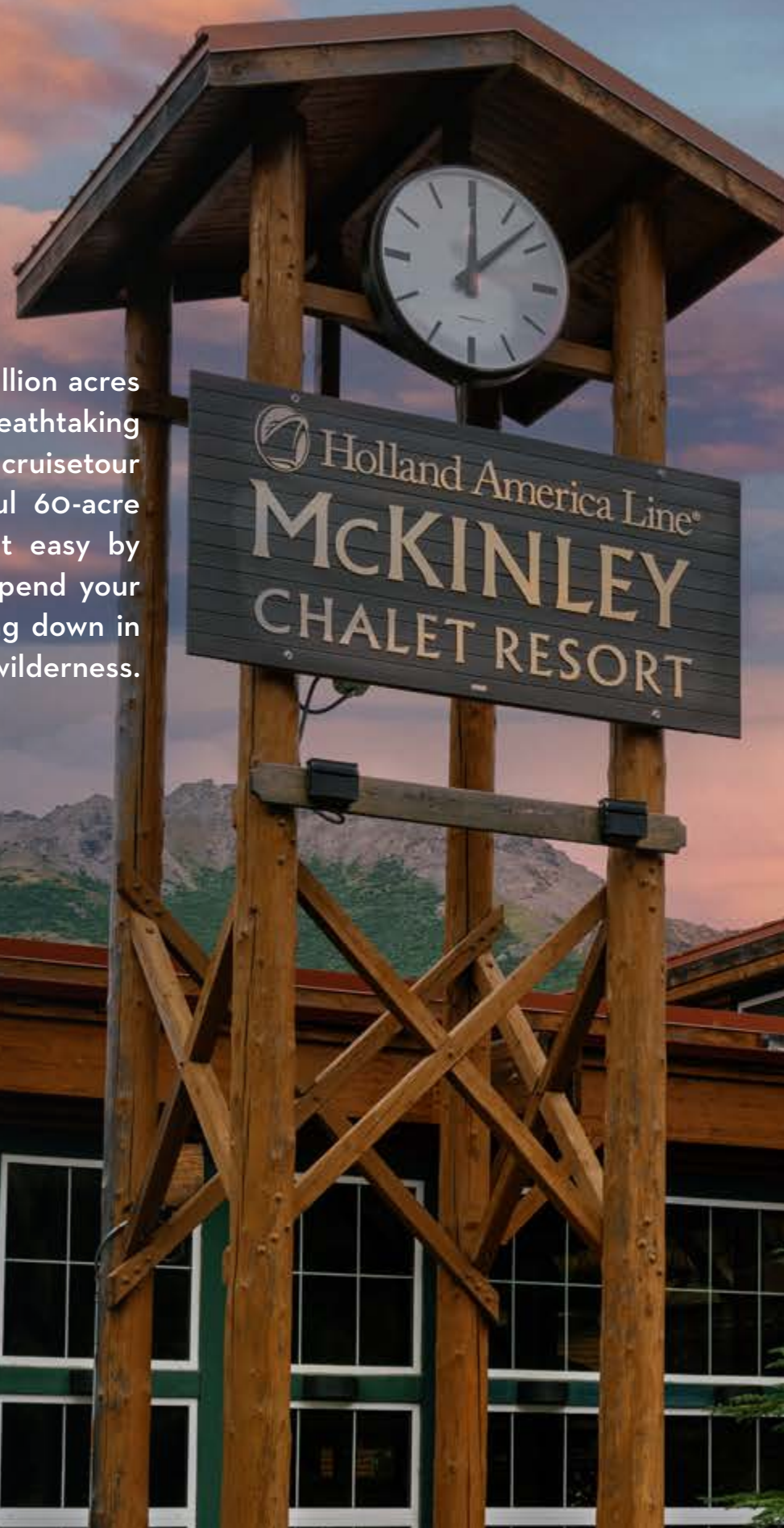
STAY AT THE GATES OF DENALI

Denali isn't just any mountain – it's an immersion into Alaska's 6 million acres of untouched land where you can explore some of the most breathtaking scenery in the world. It's also the #1 reason to book an Alaska cruisetour that includes up to 3 nights at Holland America Line's beautiful 60-acre McKinley Chalet Resort – the ultimate base camp. We make it easy by taking you directly to Denali on our luxury glass-domed railcar. Spend your days sightseeing in Denali National Park and your evenings winding down in the creature comfort of Denali Square, surrounded by northern wilderness.

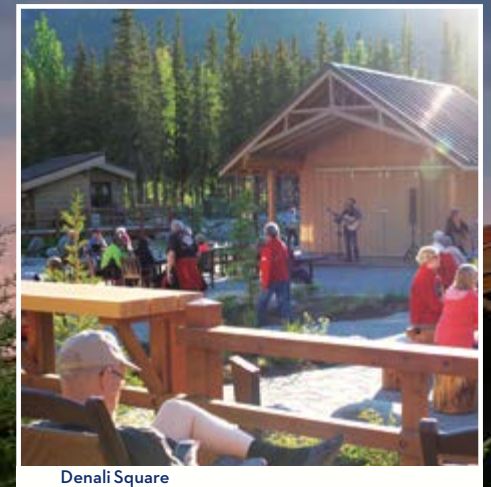
See more on page 16.



[LEARN MORE ABOUT OUR DENALI RETREAT >](#)



McKinley Explorer®



Denali Square



Tundra Wilderness Tour

McKinley Chalet Resort

EXCLUSIVE

OUR YUKON EXPERIENCE

If you like to explore destinations unseen by most, the Yukon is the place for you. Untamed and uncrowded, here you can experience the essence of frontier living. Once the pulsing heart of the Klondike Gold Rush, Dawson City is now a cluster of wooden sidewalks and charming shops on the banks of the mighty Yukon River.

With its rugged mountains, high plateaus, and remote wilderness, 80% of the Yukon Territory remains pristine. Long summer days offer you plenty of time to venture into areas largely unexplored, optimal for viewing wildlife and immersing yourself in nature. Along the way, our Journey Hosts share expert knowledge to help you get the most out of your Great Land adventure.

See more on page 17.



Fairbanks, Alaska



Dawson City, Yukon



Yukon, Canada

GET CLOSER TO **WILDLIFE & NATURE**

With more than 20 animal sanctuary and sightseeing excursions, Holland America Line brings you more of what you're looking for – WILDLIFE! From the whales and seals of Glacier Bay to the “Big 5” of Denali, we offer plenty of opportunities to experience the Last Frontier’s iconic wildlife firsthand.

Experience nature in comfort. We'll take care of the details so you can spend your time enjoying Alaska's great outdoors. From relaxing nature walks to guided bike rides, fishing and kayaking among Alaska's many waterways, our excursions give you access to the unique natural wonders of the 49th state.

[LEARN MORE ABOUT OUR TOP EXCURSIONS >](#)



Ketchikan, Alaska

NEW

SUMMER SOLSTICE AT THE ARCTIC CIRCLE

The first of its kind. Be part of this 28-day journey, crossing the Bering Sea to spend the Summer Solstice at the Arctic Circle. The summer days are long, so there is plenty of time to explore classic Alaska stops such as Juneau and Sitka and unique ports of call like Nome and the Kodiak Islands.

28-DAY ARCTIC CIRCLE SOLSTICE ROUNDRIP SEATTLE

Westerdam
2024: Jun 9



Hubbard Glacier

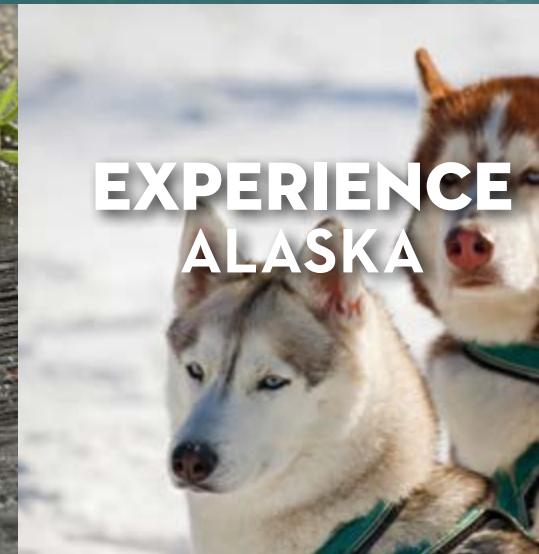
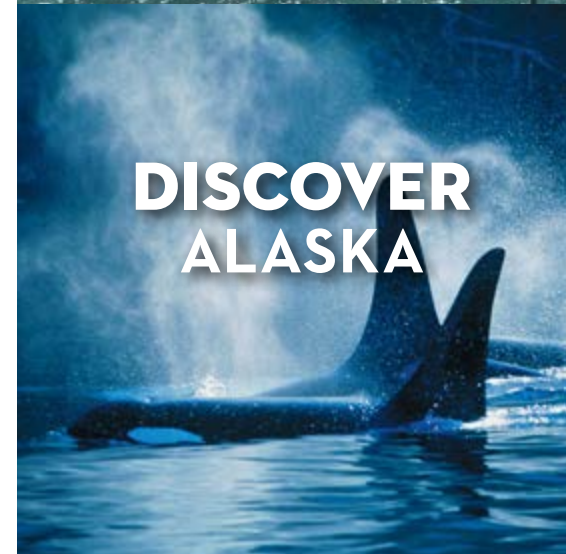
ALASKA UP CLOSE™

An onboard experience and perspective you won't find with any other cruise line.

See the best of Alaska while on board. You won't just spot whales from the ship – you'll learn their songs. You won't simply dine on fresh salmon – you'll be able to catch it yourself and have our chefs prepare and serve it to you the same evening. Enjoy privileged access to Glacier Bay National Park & Preserve and learn its history and ecosystem from naturalists and park rangers on deck. An immersive 360° experience in Alaska only Holland America Line can provide.



ALL FROM OUR PERFECTLY SIZED SHIPS



Learn about Alaska's unique history, culture, wilderness and wildlife from local expert-led programming. From onboard naturalists to National Park Service rangers, those who know Alaska best share the science and the significance behind every view.

The flavors of Alaska take center stage, and it starts with being the first and only cruise line serving only certified fresh, sustainable Alaska seafood. From fresh-caught fish to pints of our own blend of Denali Brewing Company draft beer, we serve up Alaska just for you.

Whether you long to walk across a glacier, get closer to majestic whales, or learn the secret meaning behind totem carvings, our excursions and land programs connect you deeply with the people, culture, and history of Alaska.

ALASKA UP CLOSE

EXPERIENCE THE **BEST ON BOARD**



ENTERTAINMENT

Activities day and night



DINING

Award-winning food, wine and cocktails



SPA

Rejuvenate your senses



CASINO

Play all night

ALASKA UP CLOSE

BEST OF ENTERTAINMENT



ONLY ON MUSIC WALK®

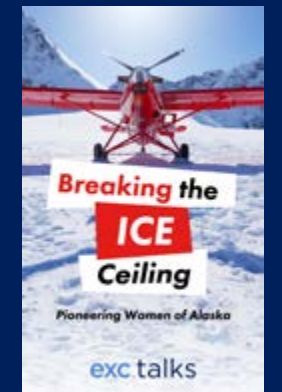
RollingStone
LOUNGE



RollingStone
ROCK ROOM

billboard
onboard

ONLY ON THE WORLD STAGE



Rolling Stone Lounge available only on board *Noordam*.
Rolling Stone Rock Room available only on board *Koningsdam*.
B.B. King's Blues Club available only on board *Westerdam*, *Eurodam*, *Nieuw Amsterdam* and *Koningsdam*.
Billboard Onboard available only on board *Noordam*, *Westerdam*, *Eurodam*, *Nieuw Amsterdam* and *Koningsdam*.

LEARN MORE >

ALASKA UP CLOSE

BEST OF DINING



The First and Only Cruise Line Serving Certified Sustainable Alaska Seafood

In addition to offering unmatched experiences in Denali and the Yukon, we are the only cruise line to earn the distinguished Responsible Fisheries Management (RFM) certification. We're proud to serve only fresh, sustainable, and traceable wild Alaska seafood on board all our ships sailing the Great Land. Achieving this global benchmark demonstrates our commitment to protecting the fish and the local communities responsible for the catch.

Savor Alaska Flavors with Ethan Stowell

Enjoy three new dishes designed by Master Chef and Culinary Council® member Ethan Stowell. Savor the salmon chop with cucumber, tomato, and avocado, a roasted fennel-crusted halibut, and a fried cod sandwich with malt vinegar aioli, available in the Dining Room.



Click to
GET A TASTE
of Holland
America Line



AWARD-WINNING OPTIONS

You'll find everything from fresh Alaska seafood, traditional Dutch coffee, and craft cocktails to pizza, sushi, and fresh-made gelato. You can even treat yourself to a late-night snack with our complimentary 24-hour room service.

COMPLIMENTARY DINING OPTIONS

The Dining Room
Lido Market
Dive-In

New York Deli & Pizza[■]
Club Orange[■]

SPECIALTY RESTAURANTS (for a nominal fee)

Pinnacle Grill
Canaletto
Rudi's Sel de Mer[■]
Tamarind[▼]

Nami Sushi[▼]
Grand Dutch Cafe[■]
Gelato[■]

BARS & LOUNGES

Crow's Nest
Explorer's Lounge
Gallery Bar[♦]
Mix[♦]

Notes[■]
Ocean Bar
Piano Bar[♦]
Tamarind Bar[▼]

INCLUDED DINING

All cruise dining is included[▲]. An additional snack is provided on the Tundra Wilderness Tour. Lunch is included before or after the riverboat *Discovery* cruise while traveling via motor coach between Dawson City and Whitehorse.

- Available only on board *Koningsdam*.
- ▼ Available only on board *Eurodam*, *Nieuw Amsterdam* and *Koningsdam*.
- ♦ Available only on board *Westerdam*, *Eurodam* and *Nieuw Amsterdam*.
- ◆ Available only on board *Zaandam*.
- ▲ A nominal fee is charged for specialty restaurants.

LEARN MORE >

ALASKA UP CLOSE

BEST OF SPA & WELLNESS



RELAX AND REVITALIZE

SPA SERVICES

- Massage & Body Therapies
- Facial Treatments
- Hair & Nail Services
- Couples Treatments

- Acupuncture Services
- Medi-Spa Cosmetic Treatments
- Teeth Whitening
- Thermal Suite & Hydropool

WELLNESS AND FITNESS

- Fitness Center
- Personal Trainers
- Nutritional Consultation
- Tai Chi
- Body Composition Analysis

- Sport Court
- Pickleball
- Circuit Training
- Guided Meditation & Stretching
- Pain Management Workshops

Click to **DISCOVER MORE** about our onboard activities



ALASKA CRUISES



We've been sharing the wonders of Alaska longer than any other cruise line. See the best of the 49th state's glaciers and coastal towns on board perfectly sized ships made to explore the Great Land.

THE ALASKA EXPERTS

- **MORE SAILINGS TO GLACIER BAY NATIONAL PARK & PRESERVE** than any other cruise line
- **GLACIER DISCOVERY ITINERARIES** take you to Hubbard Glacier or College Fjord in addition to Glacier Bay National Park & Preserve
- **ELEGANT UNCROWDED SHIPS** give you a front-row seat to Alaska's splendor
- **AWARD-WINNING 7- & 14-DAY ITINERARIES** feature unique ports of call and offer convenient weekend departures
- **NEW 28-DAY ARCTIC CIRCLE SOLSTICE** cruise allows you to spend the Summer Solstice at the Arctic Circle
- **PRIME DOCKING LOCATIONS** put you just steps away from all that Alaska has to offer and let you get a head start on your exploration every day



Glacier Bay National Park & Preserve



Authorized
Concessioner
Glacier Bay National Park

2024 ALASKA CRUISES

ITINERARY OPTIONS



Inside Passage, Alaska



ALASKAN EXPLORER VIA GLACIER BAY

ROUNDTRIP SEATTLE

Eurodam
 May 4, 11, 18, 25; Jun 1, 8, 15, 22, 29;
 Jul 6, 13, 20, 27; Aug 3, 10, 17, 24, 31;
 Sep 7, 14, 21, 28



ALASKAN EXPLORER ROUNDTRIP SEATTLE

Westerdam
 May 12, 19, 26; Jun 2; Jul 7, 14, 21, 28;
 Aug 4, 11, 18, 25; Sep 1, 8, 15, 22



INSIDE PASSAGE ROUNDTRIP VANCOUVER

Koningsdam
 Apr 27; May 4, 11, 18, 25; Jun 1, 8, 15, 22;
 Jul 6, 13, 20, 27; Aug 3, 10, 17, 24, 31;
 Sep 7, 14, 21, 28

Nieuw Amsterdam
 Apr 28♦; Sep 22■

Noordam
 May 5♦

Zaandam
 May 1, 8, 15, 22, 29; Jun 5, 12, 19, 26;
 Jul 3, 10, 17, 24, 31; Aug 7, 14, 21, 28;
 Sep 4, 11, 18

♦ These sailings do not include a service call for shore excursions at Tracy Arm.
 ■ This itinerary varies; visit HollandAmerica.com for details.



NORTHBOUND GLACIER DISCOVERY

VANCOUVER TO WHITTIER (ANCHORAGE)

Nieuw Amsterdam
 May 19; Jun 2, 16, 30; Jul 14, 28; Aug 11, 25; Sep 8

Noordam
 May 12, 26; Jun 9, 23; Jul 7, 21; Aug 4, 18; Sep 1



SOUTHBOUND GLACIER DISCOVERY

WHITTIER (ANCHORAGE) TO VANCOUVER

Nieuw Amsterdam
 May 26; Jun 9, 23; Jul 7, 21; Aug 4, 18; Sep 1, 15

Noordam
 May 19; Jun 2, 16, 30; Jul 14, 28; Aug 11, 25; Sep 8

Early Booking Bonus Have it all.

- Speciality Dining
- Premium Wi-Fi Upgrade
- Crew Appreciation
- Shore Excursions
- Elite Beverage Package Upgrade



GREAT ALASKAN EXPLORER ROUNDTRIP VANCOUVER

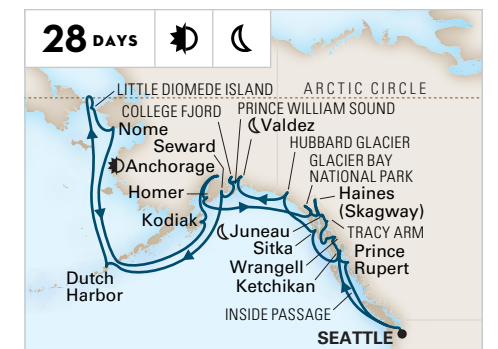
Nieuw Amsterdam
 May 5

☾ **Evening Stay.** Departure between 10:00 pm and midnight.
 ⌚ **Extended Stay.** Departure leaving the next calendar day.
 Calls to Glacier Bay National Park & Preserve are pending government approval.



GREAT ALASKAN EXPLORER ROUNDTRIP VANCOUVER

Noordam
 Sep 15



ALASKA ARCTIC CIRCLE SOLSTICE ROUNDTRIP SEATTLE

Westerdam
 Jun 9

ALASKA CRUISETOURS



Combine the best of an Alaska cruise with an unforgettable journey into the heart of Alaska's interior.

EXTEND YOUR EXPLORATION INLAND

With more visits to Glacier Bay and as the only cruise line that takes you to both the Yukon and Denali National Park, traveling with us is an opportunity like no other.

- **MORE WILDLIFE** Keep watch for Alaska's "Big 5" – see grizzly bears, moose, caribou, Dall sheep and gray wolves in the wild on the Tundra Wilderness Tour.
- **DIRECT TO THE HEART OF DENALI** Ride our McKinley Explorer® through an Arctic wild as the serenity of the backcountry envelopes you at our inviting chalet at the gates of the park.
- **THE YUKON EXPERIENCE** In a land of stunning peaks and glacier-fed waters, uncover legendary tales of the Klondike Gold Rush on the White Pass Scenic Railroad.
- **WE MAKE IT EASY** Access on our private railcars and luxury motor coaches, including luggage transport directly to your room, makes travel into the interior simple.



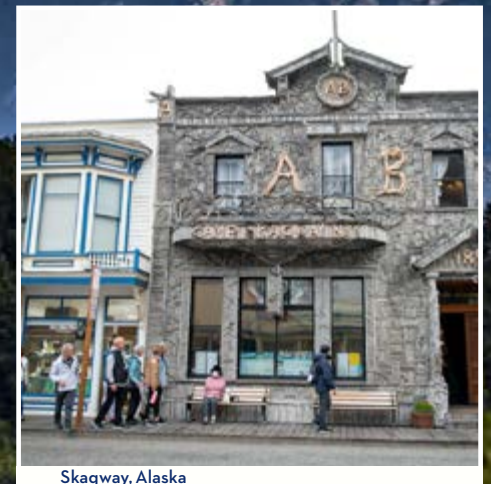
Mount Denali



McKinley Explorer®



Denali National Park & Preserve



Skagway, Alaska

2024 DENALI CRUISETOURS

ITINERARY OPTIONS



3 NIGHTS IN DENALI—TRIPLE DENALI CRUISETOURS

D1	DAY 0	1	2	3	4	5	6	7	8	9	10	11	12
land first	Fairbanks	Triple Denali			Anchorage	Whittier	Hubbard Glacier	Glacier Bay	Skagway	Juneau	Ketchikan	Inside Passage	Disembark Vancouver
cruise first	Vancouver	Inside Passage	Ketchikan	Juneau	Skagway	Glacier Bay	College Fjord	Anchorage	Triple Denali		Fairbanks	Cruisetour Ends	

D2	DAY 0	1	2	3	4	5	6	7	8	9	10	11
land first	Anchorage	Triple Denali			Whittier	Hubbard Glacier	Glacier Bay	Skagway	Juneau	Ketchikan	Inside Passage	Disembark Vancouver
cruise first	Vancouver	Inside Passage	Ketchikan	Juneau	Skagway	Glacier Bay	College Fjord	Triple Denali		Anchorage	Cruisetour Ends	

DIRECT TO DENALI

2 NIGHTS IN DENALI—DOUBLE DENALI CRUISETOURS

D3	DAY 0	1	2	3	4	5	6	7	8	9	10	11	12	13	14
land first	Fairbanks	Double Denali			Anchorage	Seward		Whittier	Hubbard Glacier	Glacier Bay	Skagway	Juneau	Ketchikan	Inside Passage	Disembark Vancouver
cruise first	Vancouver	Inside Passage	Ketchikan	Juneau	Skagway	Glacier Bay	College Fjord	Seward	Anchorage	Double Denali		Fairbanks	Cruisetour Ends		

D4	DAY 0	1	2	3	4	5	6	7	8	9	10	11	12	13	14
land first	Fairbanks	Double Denali			Anchorage	Alyeska		Whittier	Hubbard Glacier	Glacier Bay	Skagway	Juneau	Ketchikan	Inside Passage	Disembark Vancouver
cruise first	Vancouver	Inside Passage	Ketchikan	Juneau	Skagway	Glacier Bay	College Fjord	Alyeska	Anchorage	Double Denali		Fairbanks	Cruisetour Ends		

D5	DAY 0	1	2	3	4	5	6	7	8	9	10	11	
land first	Fairbanks	Double Denali			Anchorage	Whittier	Hubbard Glacier	Glacier Bay	Skagway	Juneau	Ketchikan	Inside Passage	Disembark Vancouver
cruise first	Vancouver	Inside Passage	Ketchikan	Juneau	Skagway	Glacier Bay	College Fjord	Anchorage	Double Denali		Fairbanks	Cruisetour Ends	

D6	DAY 0	1	2	3	4	5	6	7	8	9	10	
land first	Anchorage	Double Denali			Whittier	Hubbard Glacier	Glacier Bay	Skagway	Juneau	Ketchikan	Inside Passage	Disembark Vancouver
cruise first	Vancouver	Inside Passage	Ketchikan	Juneau	Skagway	Glacier Bay	College Fjord	Double Denali		Anchorage	Cruisetour Ends	

D0	DAY 0	1	2	3	4	5	6	7	8	9	10	
land first	Fairbanks	Double Denali			Whittier	Hubbard Glacier	Glacier Bay	Skagway	Juneau	Ketchikan	Inside Passage	Disembark Vancouver
cruise first	Vancouver	Inside Passage	Ketchikan	Juneau	Skagway	Glacier Bay	College Fjord	Double Denali		Fairbanks	Cruisetour Ends	

DIRECT TO DENALI

DIRECT TO DENALI

1 NIGHT IN DENALI—DENALI CRUISETOURS

D7	DAY 0	1	2	3	4	5	6	7	8	9	10
land first	Fairbanks	Denali	Anchorage	Whittier	Hubbard Glacier	Glacier Bay	Skagway	Juneau	Ketchikan	Inside Passage	Disembark Vancouver
cruise first	Vancouver	Inside Passage	Ketchikan	Juneau	Skagway	Glacier Bay	College Fjord	Anchorage	Denali	Fairbanks	Cruisetour Ends

D8	DAY 0	1	2	3	4	5	6	7	8	9
land first	Fairbanks	Denali	Whittier	Hubbard Glacier	Glacier Bay	Skagway	Juneau	Ketchikan	Inside Passage	Disembark Vancouver
cruise first	Vancouver	Inside Passage	Ketchikan	Juneau	Skagway	Glacier Bay	College Fjord	Denali	Fairbanks	Cruisetour Ends

D9	DAY 0	1	2	3	4	5	6	7	8	9	10
land first	Anchorage	Talkeetna	Denali	Whittier	Hubbard Glacier	Glacier Bay	Skagway	Juneau	Ketchikan	Inside Passage	Disembark Vancouver
cruise first	Vancouver	Inside Passage	Ketchikan	Juneau	Skagway	Glacier Bay	College Fjord	Denali	Talkeetna	Anchorage	Cruisetour Ends

DIRECT TO DENALI

DIRECT TO DENALI

2024 YUKON & DENALI CRUISETOURS ITINERARY OPTIONS



OUR BEST YUKON & DENALI CRUISETOURS WITH GLACIER DISCOVERY CRUISE

Y1	DAY 0	1	2	3	4	5	6	7	8	9	10	11	12	13
land first	Vancouver	Whitehorse	Dawson	Fairbanks	Triple Denali	Anchorage	Whittier	Hubbard Glacier	Glacier Bay					
CONT'D	14	15	16	17	18									
	Skagway	Juneau	Ketchikan	Inside Passage	Disembark Vancouver									
Y1	DAY 0	1	2	3	4	5	6	7	8	9	10	11	12	13
cruise first	Vancouver	Inside Passage	Ketchikan	Juneau	Skagway	Glacier Bay	College Fjord	Anchorage	Triple Denali	Fairbanks				
CONT'D	14	15	16	17	18									
	Dawson	Whitehorse	Vancouver	Cruisetour Ends										

Y2	DAY 0	1	2	3	4	5	6	7	8	9	10	11	12	13	14
land first	Vancouver	Dawson	Double Denali	Anchorage	Whittier	Hubbard Glacier	Glacier Bay	Skagway	Juneau	Ketchikan	Inside Passage	Disembark Vancouver			
cruise first	Vancouver	Inside Passage	Ketchikan	Juneau	Skagway	Glacier Bay	College Fjord	Anchorage	Double Denali	Dawson	Vancouver	Cruisetour Ends			

YUKON & DENALI CRUISETOURS WITH INSIDE PASSAGE CRUISE

Y3	DAY 0	1	2	3	4	5	6	7	8	9	10	11	12	13	14
land first	Anchorage	Triple Denali	Fairbanks	Dawson	Whitehorse	Skagway	Skagway	Glacier Bay	Ketchikan	Inside Passage	Disembark Vancouver				
cruise first	Vancouver	Inside Passage	Juneau	Skagway	Whitehorse	Dawson	Fairbanks	Triple Denali	Anchorage	Cruisetour Ends					

Y4	DAY 0	1	2	3	4	5	6	7	8	9	10	11	12
land first	Anchorage	Double Denali	Fairbanks	Dawson	Whitehorse	Skagway	Skagway	Glacier Bay	Ketchikan	Inside Passage	Disembark Vancouver		
cruise first	Vancouver	Inside Passage	Juneau	Skagway	Whitehorse	Dawson	Fairbanks	Double Denali	Anchorage	Cruisetour Ends			

Y5	DAY 0	1	2	3	4	5	6	7	8	9	10	11
land first	Anchorage	Double Denali	Fairbanks	Dawson	Whitehorse	Skagway	Glacier Bay	Ketchikan	Inside Passage	Disembark Vancouver		
cruise first	Vancouver	Inside Passage	Juneau	Whitehorse	Dawson	Fairbanks	Double Denali	Anchorage	Cruisetour Ends			

Y6	DAY 0	1	2	3	4	5	6	7	8	9	10
land first	Anchorage	Double Denali	Fairbanks	Dawson	Whitehorse	Skagway	Glacier Bay	Ketchikan	Inside Passage	Disembark Vancouver	
cruise first	Vancouver	Inside Passage	Juneau	Whitehorse	Dawson	Fairbanks	Double Denali	Anchorage	Cruisetour Ends		

2024 CRUISETOURS

FEATURES & DINING PLANS

CRUISETOUR FEATURES	D1	D2	D3	D4	D5	D6	D7	D8	D9	D0	Y1	Y2	Y3	Y4	Y5	Y6
GLACIER BAY NATIONAL PARK & PRESERVE♦ Full day of scenic cruising and glacier watching	✓	✓	✓	✓	✓	✓	✓	✓	✓	✓	✓	✓	✓	✓	✓	✓
MCKINLEY EXPLORER® Luxury domed railcars between Anchorage and Denali	✓	✓	✓	✓	✓	✓	✓	✓	✓	✓	✓	✓	✓	✓	✓	✓
TUNDRA WILDERNESS TOUR (S) 5- to 6-hour wildlife-spotting adventure deep into Denali■	✓	✓	✓	✓	✓	✓				✓	✓	✓	✓	✓	✓	✓
JOURNEY HOST Expert narration and travel coordination on land											✓	✓	✓	✓	✓	✓
KLONDIKE SPIRIT IN DAWSON CITY Narrated Yukon River cruise on a paddlewheeler											U	U	✓	✓	U	U
RIVERBOAT DISCOVERY (L) IN FAIRBANKS Cruise the Alaska interior on an authentic sternwheeler	✓		✓	✓	✓		P	P		✓	✓	CF				
GOLD DREDGE 8 IN FAIRBANKS Pan for gold at an actual mining camp	P		✓	✓	P		P	P		P	✓	LF	✓	✓	✓	
WHITE PASS & YUKON ROUTE RAILROAD Spectacular mountain ride on a narrow-gauge train													✓	✓	✓	✓
DIRECT TO DENALI Go to Denali right from your ship; no overnight in Anchorage		✓				✓		✓	✓	✓						
DIRECT RAIL TO THE SHIP Follow Alaska's dramatic coastline by rail	✓	✓			✓		U	✓	✓	✓	✓	✓				
PORTAGE GLACIER View Ice Age-era icebergs from just 300 yards away	U	P	✓	✓	U	P	U		P							
MCKINLEY CHALET RESORT DENALI SUITES Enjoy a spacious balcony, larger living area and enhanced amenities	U	U	U	U	U	U	U	U	U	U	U	U	U	U	U	U
SEATTLE CRUISETOUR CONNECTOR Make your cruisetour roundtrip from Seattle	✓					✓		✓						✓		

GREAT LAND DINING PLANS

Relax and focus all your attention on Alaska and the Yukon's spectacular sights, amazing wildlife, and historic outposts, knowing that most of your meals – and gratuities – are pre-planned and paid for with our Great Land Dining Plan.

Choose a breakfast-only, Denali, or full dining plan to pair with your journey. Dining plans are available on cruisetours.



Early Booking Bonus Have it all.

- **FREE** Elite Beverage Package Upgrade
- **FREE** Crew Appreciation
- **FREE** Premium Wi-Fi Upgrade
- Shore Excursions
- Specialty Dining
- Low Price Guarantee



Limited Availability: 60% Off Our Best Amenities Included in Your Fare.

Receive 60% off our top amenities with our new fully refundable Have It All Early Booking Bonus*!

For a limited time, enjoy all the benefits of our standard Have It All package, including Shore Excursion and Specialty Dining credit, plus free Crew Appreciation, a Low Price Guarantee, and upgrades to Premium Wi-Fi and Elite Beverage Packages. Don't wait – limited availability while supplies last!

Free Crew Appreciation

Crew Appreciation, or stateroom gratuities, is covered for you (a value of \$17 per day) to recognize the efforts of a wide variety of crew members who contribute to the experiences of all our guests.

Low Price Guarantee

If you find a lower, identical fare for your cruise before this offer expires, you are eligible to receive the difference in the form of an Onboard Credit, stateroom upgrade, or more!

A VALUE OF **\$126**
US
PER PERSON, PER DAY
INCLUDED

Book Early to Receive Our Best Value on Top Amenities



Shore Excursions

The longer you cruise, the more you can explore. Cruise 6 to 9 days and get a US\$100 Shore Excursion credit; 10 to 20 days and get a US\$200 Shore Excursion credit; 21 days or more and get a US\$300 Shore Excursion credit.



Specialty Dining

Enhance your cruise with award-winning specialty dining at Pinnacle Grill, Canaletto or Tamarind – with service charges included.



FREE Premium Wi-Fi Upgrade

Stay connected throughout your journey. Surf the web, use social media, check email, and send messages to friends and family.



FREE Elite Beverage Package Upgrade

Choose from a large selection of wine, beer, spirits, and cocktails, plus non-alcoholic options such as sodas, coffees, and more – with service charges included.

Book Today – Limited Availability

Have it all.

Early Booking Bonus Have it all.

Up to 3 Nights Specialty Dining
Includes service charges, varies by voyage

Up to 3 Nights Specialty Dining
Includes service charges, varies by voyage

Up to us\$300 Shore Excursion Credit
Varies by voyage length

Up to us\$300 Shore Excursion Credit
Varies by voyage length

Signature Beverage Package
Includes service charges

FREE UPGRADE: Elite Beverage Package
Includes service charges

Wi-Fi Surf Package

FREE UPGRADE: Premium Wi-Fi Package

FREE Prepaid Crew Appreciation
Gratuities

LOW PRICE GUARANTEE
U.S. and Canada only

See page 20 for terms and conditions.

TERMS & CONDITIONS

RESERVATIONS

Accommodations are limited. If you use a travel agent/travel agency ("TA") to book your reservation, you shall pay deposits and payments for Holland America Line's ("HAL") services to such TA. HAL will issue travel documents only if and when it has received full payment from TA. HAL will make any refunds to the applicable TA based only on the amount HAL actually received, less any applicable cancellation fees and charges; guest is responsible for obtaining any refund monies from TA.

DEPOSIT & FINAL PAYMENT REQUIREMENTS

Deposit is required at the time of cruise booking and final payment of balance must be received no later than 90 days prior to departure.

CANCELLATIONS

Our cancellation policy allows you to cancel your 2023-2024 Hawaii, Mexico, Panama Canal & Pacific Coast cruise up to 75 to 91 days prior to departure, depending on the cruise, and receive a full refund. If you cancel your 2023-2024 Hawaii, Mexico, Panama Canal & Pacific Coast cruise within 75 to 90 days prior to departure, depending on the cruise, you are required to pay a cancellation fee (including 3rd and 4th berths) as set forth below. Such fees are based on the fare paid, excluding Taxes, Fees & Port Expenses ("TFPE"), transfers, surcharges, shore and land excursions, and most pre-purchased gift(s) and/or special service(s). See more details in the [Cruise Contract](#). For 2023-2024 Hawaii, Mexico, Panama Canal & Pacific Coast cruises, the cancellation fee amount varies based on the length of sailing and timing of cancellation as follows:

Change to arrangements may be subject to change charges.

2024 ALASKA CRUISES — 7- TO 14-DAY CRUISES	
Number of Days Before Sailing Date on Which Guest Cancels Cruise	Amount of Cancellation Fee
90+ days notice	0%
89-76 days notice	Amount equal to deposit requirement
75-61 days notice	50% of gross fare
60-31 days notice	75% of gross fare
30 days or less notice	100% of gross fare

28-DAY ARCTIC CIRCLE SOLSTICE CRUISE	
Number of Days Before Sailing Date on Which Guest Cancels Cruise	Amount of Cancellation Fee
120+ days notice	0%
119-91 days notice	Amount equal to deposit requirement
90-76 days notice	60% of gross fare
75 days or less notice	100% of gross fare

CREW APPRECIATION & SERVICE CHARGES

For your convenience, **Crew Appreciation** will automatically be added to your onboard account to recognize the efforts of a wide variety of crew members in various departments, including those in the Dining, Entertainment, Guest Services, and Galley areas. The amount of the Crew Appreciation is based on your stateroom category and is subject to adjustment at your discretion, except as otherwise provided in the Crew Appreciation and Service Charge Policy. A **Service Charge** will automatically be added to optional purchases of beverage packages, drinks, dining room and specialty dining, onboard parties, and other services or amenities provided to guests that are not included in the cruise fare. The Crew Appreciation and Service Charge payments on all vessels in our fleet are pooled and distributed in the form of compensation, including bonuses. For further details, please review our [Crew Appreciation and Service Charge Policy](#).

TAXES, FEES & PORT EXPENSES

"Taxes, Fees & Port Expenses," or "TFPE" as used by HAL, may include any and all fees, charges, tolls, and taxes imposed on HAL by governmental or quasi-governmental authorities, as well as third-party fees and charges arising from

a vessel's presence in a harbor or port. TFPE may be assessed per guest, per berth, per ton, or per vessel. TFPE are subject to change, and HAL reserves the right to collect any increases in effect at the time of sailing even if the fare has already been paid in full.

GUESTS WITH DISABILITIES

Holland America Line seeks to accommodate the needs of guests with disabilities, to the extent feasible. Some accommodations require advanced notification. For more information, visit the [Accessible Cruising section](#) of our website.

MEDICAL SERVICES

Each of our ships is equipped with limited medical facilities that are staffed by a physician and registered nurses. Unless otherwise indicated in an active HAL policy (for example, the COVID-19 Protection Program), guest will be charged a fee for all medical services and medications obtained on board. If the onboard physician is unable to care for your needs on board, you will be transferred to medical facilities on shore.

If your condition will require you to have a special medical apparatus or assistance on board, we must be made aware of that at the time of booking in order to determine whether we can accommodate your needs.

PASSPORTS / VISAS / IMMUNIZATIONS

You are solely responsible for securing and having available all proper documentation for the countries visited on your cruise or land tour and for bringing all necessary travel documents such as passports, visas, proof of citizenship, re-entry permits, minors' permissions, and medical certificates showing all necessary vaccinations. Guests should check with their TA or the appropriate governmental authority to determine the necessary documents. Guest will be refused boarding or disembarked without recourse or liability for refund, payment, compensation, or credit of any kind if they do not have proper documentation, and they will be subject to any fine or other costs incurred by HAL that result from improper documentation or non-compliance with applicable regulations.

RESPONSIBILITY

All HAL vessels are owned by HAL Antillen N.V. and operated by Holland America Line N.V. in its capacity as general partner of Cruiseport Curaçao C.V. Transportation on board the ship is provided solely by the Shipowner and Operator and pursuant to the [Cruise Contract](#) that you will receive prior to embarkation. Ships' Registry: The Netherlands.

Non-Holland America Line services (for example, shore excursions) are generally performed by independent contractors. These non-Holland America Line services are solely at your risk and subject to the terms or arrangements with the independent contractor. HAL assumes no responsibility with respect to these non-Holland America Line services (including cancellation, injury, or death) even though HAL may collect monies or make bookings.

ACCURACY OF CONTENTS / GENERAL

Contents of this brochure, including terms and conditions, are subject to change at any time at the sole discretion of HAL. Please refer to [HollandAmerica.com](#) for up-to-date information. **Any advertised offer may be changed or revoked at any time.**

Situations may arise which, in our opinion, make it necessary for us to cancel, advance, or postpone a scheduled departure, change itineraries, or make substitutions involving hotels, restaurants, ports of call, other travel components, vessels, or other modes of transportation. In that event, we do not assume responsibility or liability for any resulting losses, expenses, or inconvenience. We are not required to make refunds once travel commences, regardless of the reason for guests being unable to complete their travel.

The ship names and all other trademarks, slogans, logos, and imagery used herein are, whether or not registered, owned by Holland America Line N.V.

All guests will be required to agree to the [Cruise Contract](#) and all information and terms therein.



CALL YOUR TRAVEL ADVISOR, OR 1-877-SAIL HAL (1-877-724-5425)



CALL YOUR TRAVEL ADVISOR OR 0344 338 8605



CALL YOUR TRAVEL ADVISOR OR 1300 987 322

OR VISIT HOLLANDAMERICA.COM



HAVE IT ALL EARLY BOOKING BONUS TERMS & CONDITIONS

Have It All Early Booking Bonus Offer ("Early Booking Bonus Offer") fare and its parts are neither transferable nor refundable and have no cash value. Early Booking Bonus Offer fares available only on select departures and exclude Grand Voyages and any voyage lasting 5 days or less. Any advertised fare may be changed or revoked at any time. Fares are subject to full terms and conditions, available at [HollandAmerica.com/package-terms](#). **Elite Beverage Package** has a daily limit of 15 beverages. Available only for beverages priced at US\$15 or less. Must be 21+ for alcoholic beverages. Management reserves the right to revoke the package and may refuse service for any reason. The package excludes beverages purchased in The Shops, from the mini-bar, through 24-hour room service or on Half Moon Cay. **Specialty Dining** based on cruise duration and ship type. Dining options are determined by ship and exclude all events in Pinnacle Grill. **Shore Excursion** offer is based on cruise duration and is per person, not per stateroom. For **Alaska cruisetours** and 6- to 9-day voyages, eligible guests will receive US\$100 credit per person to apply toward their shore excursion purchase(s). For 10- to 20-day voyages, eligible guests will receive US\$200 credit per person to apply toward their shore excursion purchase(s). For 21+ day voyages (excluding Grand Voyages), eligible guests will receive US\$300 credit per person to apply toward their shore excursion purchase(s). Shore Excursion credit must be used pre-cruise when applied toward an Alaska Cruisetour Land Excursion purchase. Shore Excursion credit must be used on corresponding cruise and is non-refundable. **Wi-Fi Premium Package:** All onboard Internet usage is subject to HAL's standard policies, which may limit or block browsing/use of some sites or applications due to network security and bandwidth usage. Offerings are subject to change without notice. Plan can be used on any device, but only one device can be actively connected at a time. Upgrades are available once on board. Offer applies to 1st/2nd guests in a stateroom only. **Low Price Guarantee:** If a guest books a HAL cruise with the Early Booking Bonus Offer (the "original booking") and such guest finds a cheaper price for an identical booking within the duration of the Early Booking Bonus Offer (the "Comparison Fare"), the difference may be compensated in the form of an onboard credit, stateroom upgrade or other method. HAL reserves the sole right to determine the method of compensation made to guests. A fare will be considered a Comparison Fare only if its booking consists of details that are identical to those of the original booking (including, but not limited to, the same ship, sail dates, stateroom category and number of guests as the original booking). A determination as to whether the located fare is identical to the original booking will be at HAL's sole discretion. HAL reserves the right to apply this price protection and offer at its discretion. Other restrictions and exclusions may apply. Holland America Line is neither responsible nor liable for any printing errors. Promotion is based on promotion code(s) N2 and based on double occupancy. Ships' Registry: The Netherlands.



HAVE IT ALL EARLY BOOKING BONUS TERMS & CONDITIONS

Have It All Early Booking Bonus Offer ("Early Booking Bonus Offer") is available for a limited time, on a first-come, first-served basis, to the first guests that make a new booking in connection with the Early Booking Bonus Offer while it is available. Taxes, Fees & Port Expenses are included. All values herein are in USD. Holland America Cruise Line ("HAL") may change or revoke the Offer or its parts at any time. Early Booking Bonus Offer is valued at US\$130 per day. Other exclusions and terms may apply; void where prohibited. Early Booking Bonus Offer and its parts are neither transferable, substitutable, nor redeemable for cash. Early Booking Bonus Offer is available for 1st/2nd guests only and applies only to the cruise portion of Alaska cruisetours. Early Booking Bonus Offer fares available only on select departures and exclude Grand Voyages and any voyage lasting 5 days or less. **Elite Beverage Package** has a daily limit of 15 beverages, including all beverages priced at US\$15 or less and includes beverage service charges. The Elite Beverage Package includes wine, beer, spirits, cocktails, non-alcoholic beverages, sodas, bottled water (sparkling or still, 400ml or less) and coffee. Guests must order one beverage at a time and be 21 years+ for alcoholic beverages. Sharing of any beverage or the package is not permitted. Beverage management/HAL reserve the right to revoke the package if misused and refuse service for any reason, including service of alcoholic beverages to intoxicated guests. Package excludes beverages purchased in The Shops, from the mini-bar, through 24-hour room service or on Half Moon Cay. **Specialty Dining** is based on cruise duration and ship type. For 6- to 9-day voyages, guests will receive one night at Pinnacle Grill, Canaletto or Tamarind. For ships without Tamarind, guests will receive one night at Pinnacle Grill or Canaletto. For 10- to 20-day voyages, guests will receive two nights: one night at Pinnacle Grill and one night at Canaletto or Tamarind. For ships without Tamarind, guests will receive two nights: one night at Pinnacle Grill and one night at Canaletto. For 21+ day voyages (excluding Grand Voyages), guests will receive three nights: one night at Pinnacle Grill, one night at Tamarind and one night at Canaletto. For ships without Tamarind, guests will receive three nights: two nights at Pinnacle Grill and one night at Canaletto. Offer excludes Specialty Dining Events in Pinnacle Grill such as Sel de Mer, A Taste of De Librije and Cellar Master Dinner. Reservations and dining times will be available to pre-reserve. **Shore Excursion credit** is based on cruise duration and is per person, not per stateroom. For Alaska cruisetours and 6- to 9-day voyages, eligible guests will receive US\$100 credit per person to apply toward their shore excursion purchase(s). For 10- to 20-day voyages, eligible guests will receive US\$200 credit per person to apply toward their shore excursion purchase(s). For 21+ day voyages (excluding Grand Voyages), eligible guests will receive US\$300 credit per person to apply toward their shore excursion purchase(s). Shore Excursion credit must be used pre-cruise when applied toward an Alaska Cruisetour Land Excursion purchase. Shore Excursion credit must be used on corresponding cruise and is non-refundable. Shore Excursion credit cannot be redeemed for cash value or applied to a non-shore excursion item. **Wi-Fi Premium Package:** All onboard Internet usage is subject to HAL standard policies, which may limit browsing of some sites due to network security and bandwidth usage. Applications that use high bandwidth may be blocked and offerings are subject to change with or without notice. The plan can be activated on any device, but only one device can be actively connected at a time. Upgrades are available once on board for a single day, the remaining duration of the voyage or adding more devices. Offer applies to 1st/2nd guests in a stateroom only. **Crew Appreciation:** Receive prepaid stateroom gratuities on board. Gratuities for other services, including, but not limited to, bar, dining room, wine accounts and spa/salon services, are not included. HAL is not responsible or liable for any printing errors. Promotion is based on promotion code(s) N2 and based on double occupancy. Ships' Registry: The Netherlands.



HAVE IT ALL EARLY BOOKING BONUS TERMS & CONDITIONS

Have It All Early Booking Bonus Offer ("Early Booking Bonus Offer") is available for a limited time, on a first-come, first-served basis, to the first guests that make a new booking in connection with the Early Booking Bonus Offer while it is available. Taxes, Fees & Port Expenses are included. All values herein are in USD. Holland America Cruise Line ("HAL") may change or revoke the Offer or its parts at any time. Early Booking Bonus Offer is valued at US\$130 per day. Other exclusions and terms may apply; void where prohibited. Early Booking Bonus Offer and its parts are neither transferable, substitutable, nor redeemable for cash. Early Booking Bonus Offer is available for 1st/2nd guests only and applies only to the cruise portion of Alaska cruisetours. Early Booking Bonus Offer fares available only on select 2024 and 2025 departures. **Elite Beverage Package** has a daily limit of 15 beverages, including all beverages priced at US\$15 or less, and includes beverage service charges. The Elite Beverage Package includes wine, beer, spirits, cocktails, non-alcoholic beverages, sodas, bottled water (sparkling or still, 400ml or less) and coffee. Guests must order one beverage at a time and be 21 years+ for alcoholic beverages. Sharing of any beverage or the package is not permitted. Beverage management/HAL reserve the right to revoke the package if misused and refuse service for any reason, including service of alcoholic beverages to intoxicated guests. Package excludes beverages purchased in The Shops, from the mini-bar, through 24-hour room service or on Half Moon Cay. **Specialty Dining** is based on cruise duration and ship type. For 6- to 9-day voyages, guests will receive one night at Pinnacle Grill, Canaletto or Tamarind. For ships without Tamarind, guests will receive one night at Pinnacle Grill or Canaletto. For 10- to 20-day voyages, guests will receive two nights: one night at Pinnacle Grill and one night at Canaletto or Tamarind. For ships without Tamarind, guests will receive two nights: one night at Pinnacle Grill and one night at Canaletto. For 21+ day voyages (excluding Grand Voyages), guests will receive three nights: one night at Pinnacle Grill, one night at Tamarind and one night at Canaletto. For ships without Tamarind, guests will receive three nights: two nights at Pinnacle Grill and one night at Canaletto. Offer excludes Specialty Dining Events in Pinnacle Grill such as Sel de Mer, A Taste of De Librije and Cellar Master Dinner. Reservations and dining times will be available to pre-reserve. **Shore Excursion credit** is based on cruise duration and is per person, not per stateroom. For Alaska cruisetours and 6- to 9-day voyages, eligible guests will receive US\$100 credit per person to apply toward their shore excursion purchase(s). For 10- to 20-day voyages, eligible guests will receive US\$200 credit per person to apply toward their shore excursion purchase(s). For 21+ day voyages (excluding Grand Voyages), eligible guests will receive US\$300 credit per person to apply toward their shore excursion purchase(s). Shore Excursion credit must be used pre-cruise when applied toward an Alaska Cruisetour Land Excursion purchase. Shore Excursion credit must be used on corresponding cruise and is non-refundable. Shore Excursion credit cannot be redeemed for cash value or applied to a non-shore excursion item. **Wi-Fi Premium Package:** All onboard Internet usage is subject to HAL standard policies, which may limit browsing of some sites due to network security and bandwidth usage. Applications that use high bandwidth may be blocked and offerings are subject to change with or without notice. The plan can be activated on any device, but only one device can be actively connected at a time. Upgrades are available once on board for a single day, the remaining duration of the voyage or adding more devices. Offer applies to 1st/2nd guests in a stateroom only. **Crew Appreciation:** Receive prepaid stateroom gratuities on board. Gratuities for other services, including, but not limited to, bar, dining room, wine accounts and spa/salon services, are not included. HAL is not responsible or liable for any printing errors. Promotion is based on promotion code(s) N2 and based on double occupancy. To be read in conjunction with the Holland America Line Cruise Contract at [HollandAmerica.com/en_US/legal-privacy-australia/cruise-contract.html](#), by which guests will be bound. Whilst all information is correct at time of publication, offers are subject to change or withdrawal. Carnival plc trading as Carnival Australia ABN 23 107 998 443 as agent for Holland America Line. Ships' Registry: The Netherlands.



HOLLAND AMERICA LINE
NAVIGATOR

DOWNLOAD THE NAVIGATOR® APP

The Holland America Line Navigator® App is your indispensable tool for cruise planning, essential updates, embarkation, managing your onboard experience and booking shore excursions.