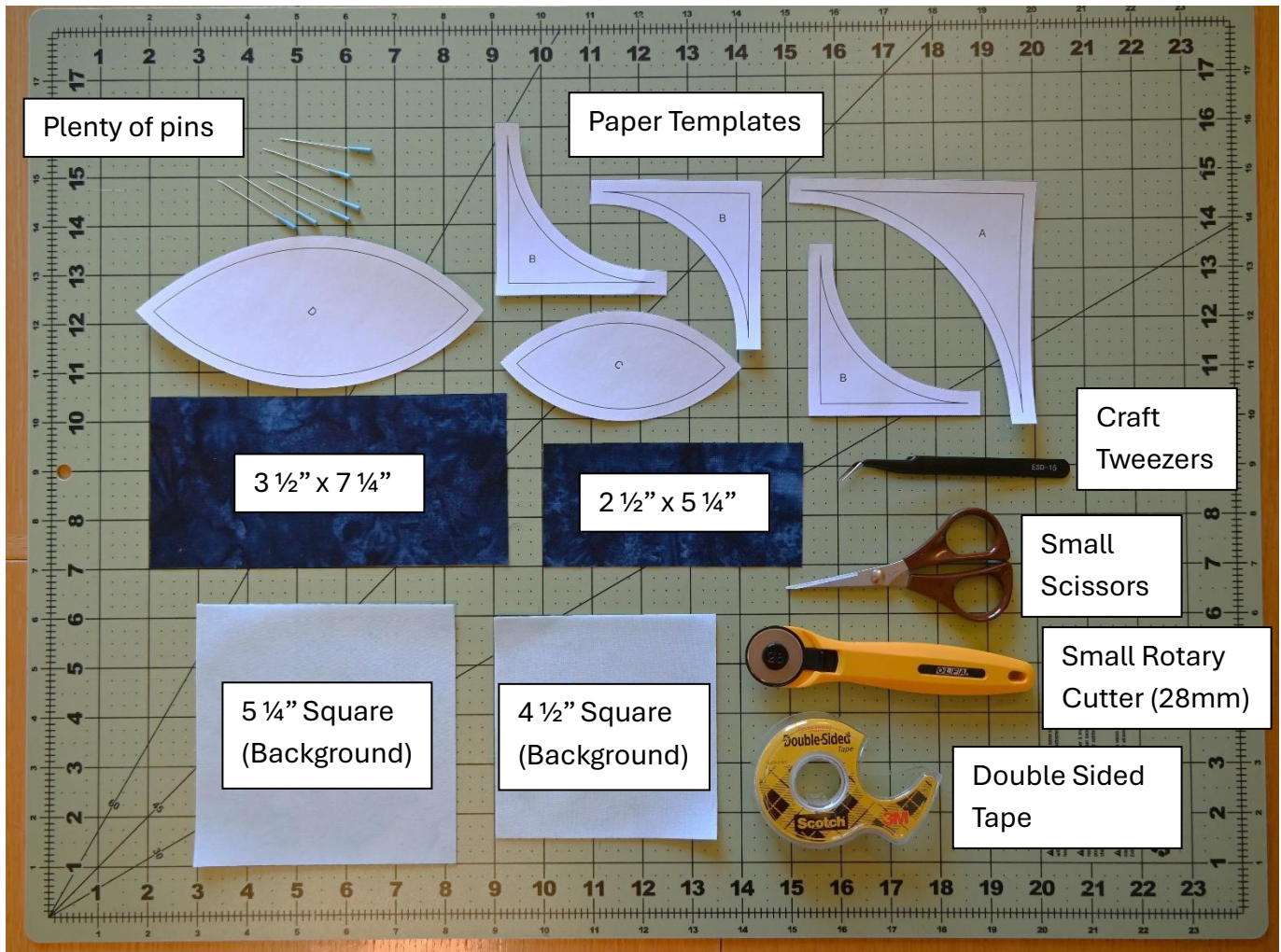
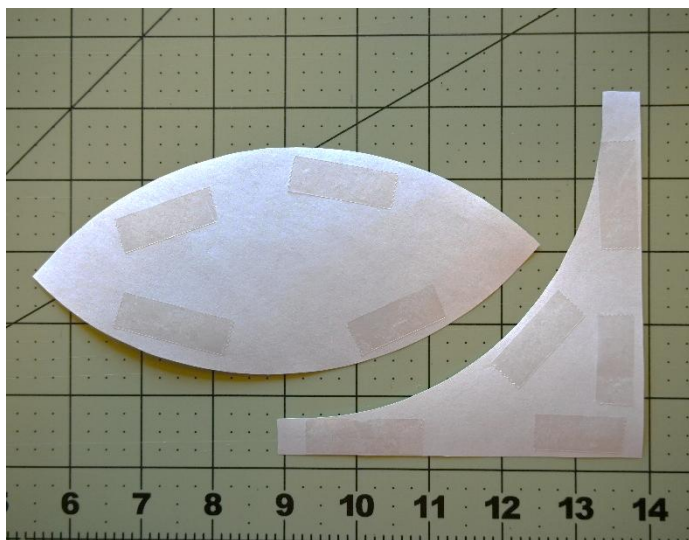


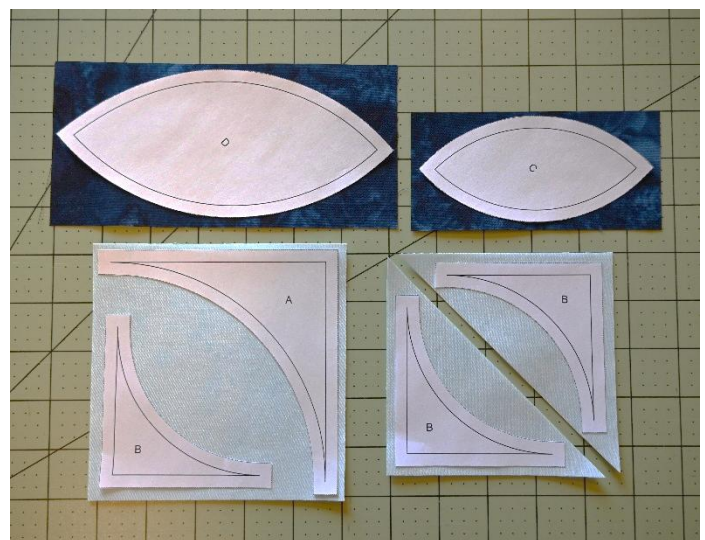
En Vol (In Flight) Curved Piecing Tutorial by Kris Holderness



These are the main items you will need for this portion of your project.



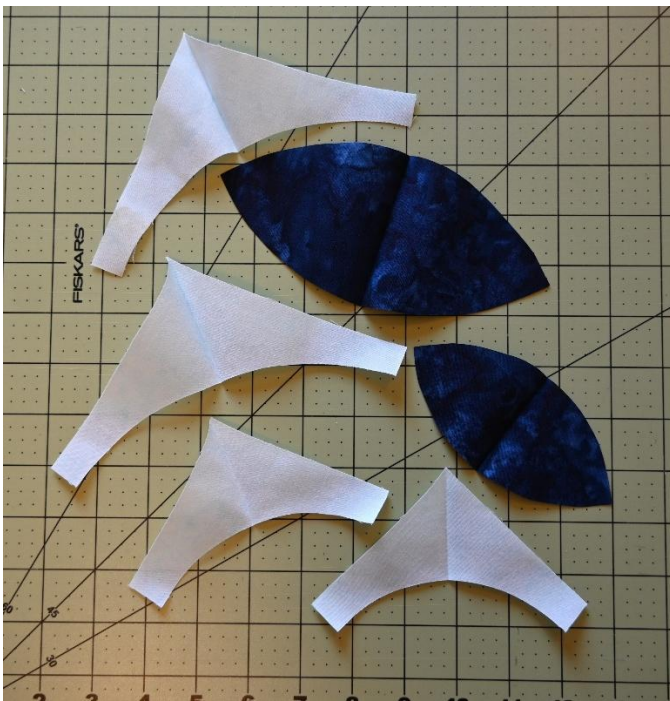
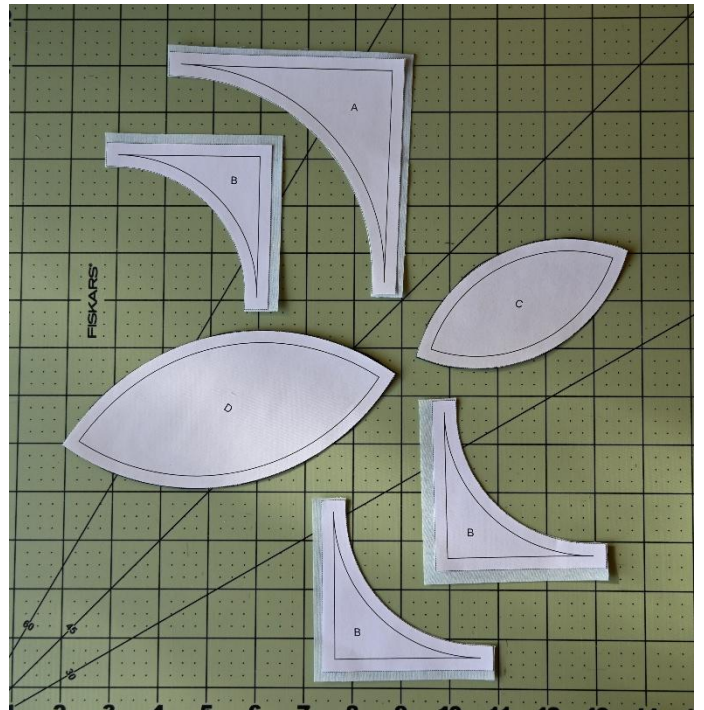
Apply double sided tape to the back of your paper templates.



Position your templates onto your fabric pieces. The 4 1/2" squares are cut into half square triangles for ease of handling.



Cut out your shapes with your rotary cutter. Cut the curves and ends exactly per the template. Leave $\frac{1}{4}$ " extra on the long sides of your A and B templates.



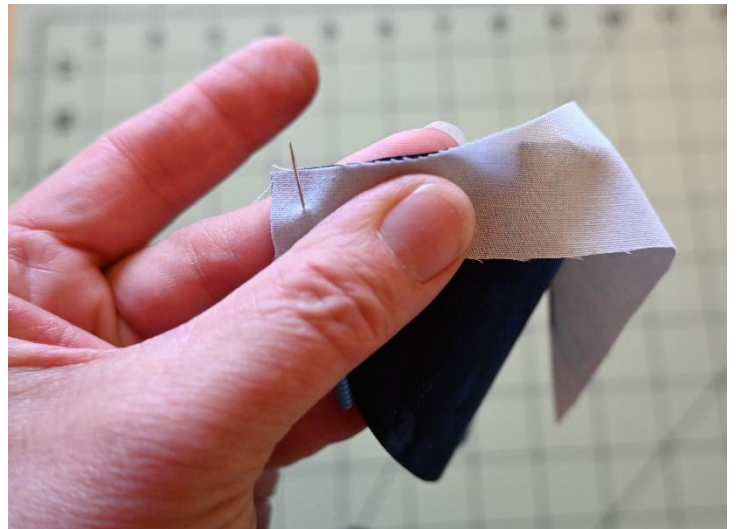
Fold your center shapes in half with right sides together and gently press.
Fold your background pieces in half with wrong sides together and gently press.



With right sides together, nest your folds and pin in place.



Match your ends together and pin in place.



Carefully match your raw edges together and pin.



Continue matching your edges together pinning as you go.

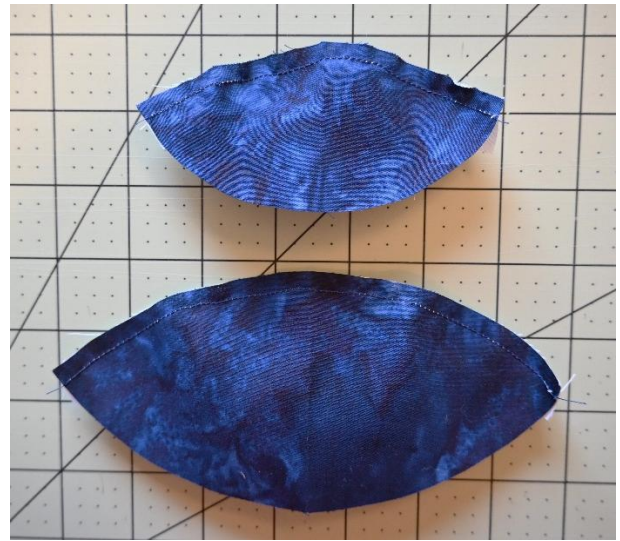


Sew a $\frac{1}{4}$ " seam following the shape of your curve. Use your tweezers to adjust and hold your top piece.

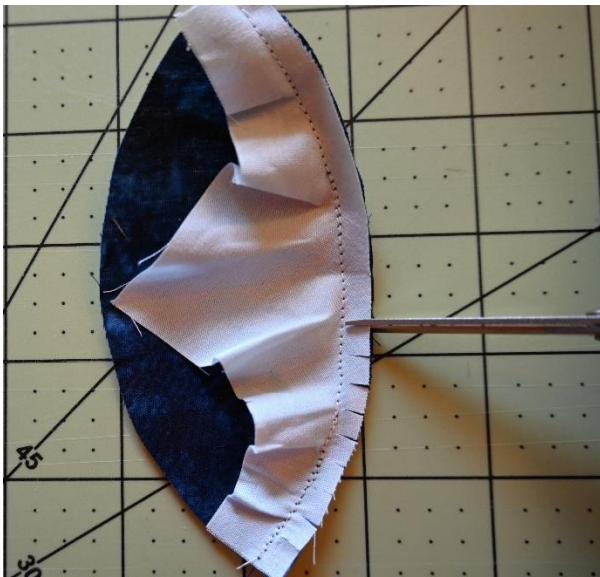




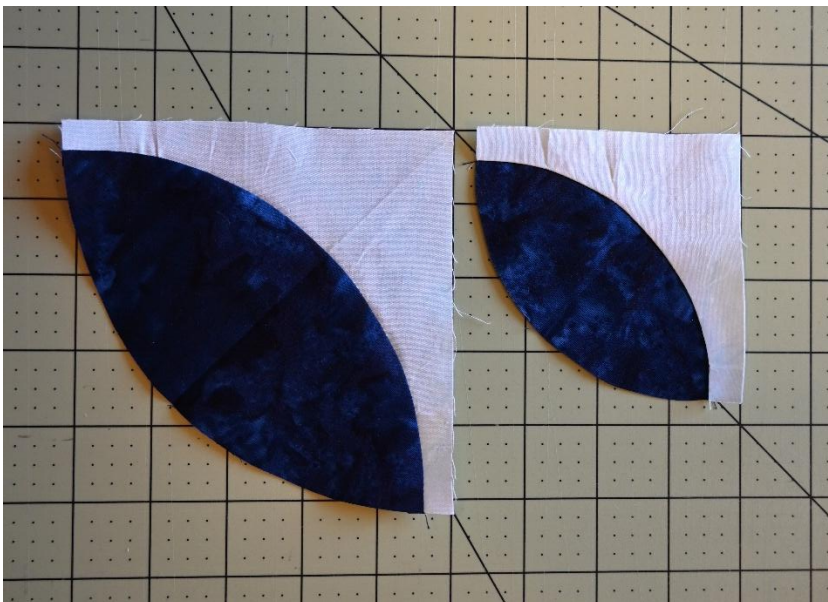
Completed seam front.



Completed seam back.



Clip the curve on the background piece of your smaller unit. This will help your block to lay flat. Clipping the curve on your larger piece is optional.



Press the seam of your smaller unit toward the background piece.

Press the seam of your larger unit toward the center piece. The direction of this seam allows the center unit to lay flat thus clipping the seam is optional.



Repeat the process with your remaining background pieces.



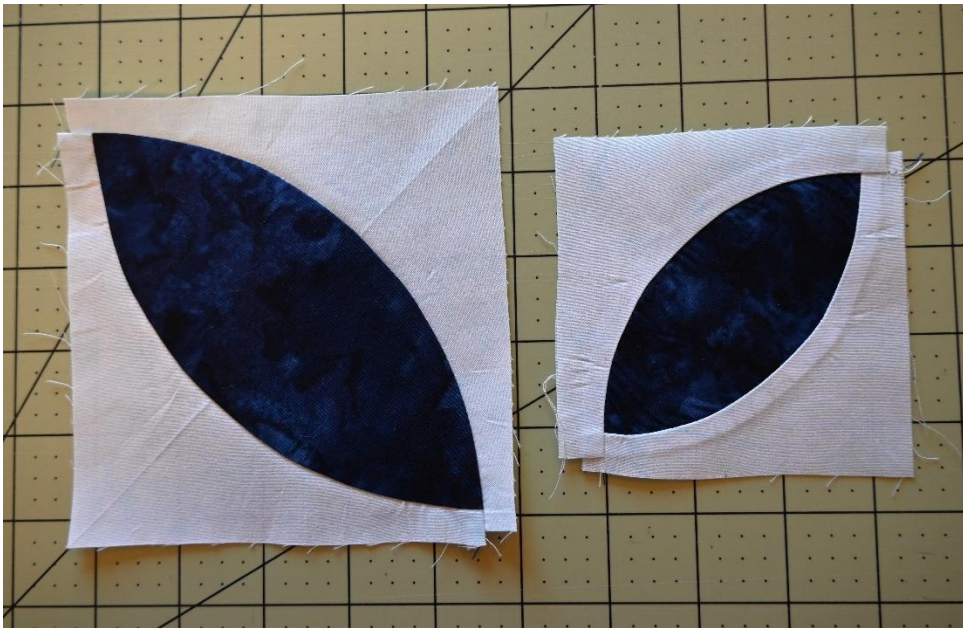
Be sure to match your ends with your 1/4" seam allowance and not to your extended edges.



Pieces are ready to sew.

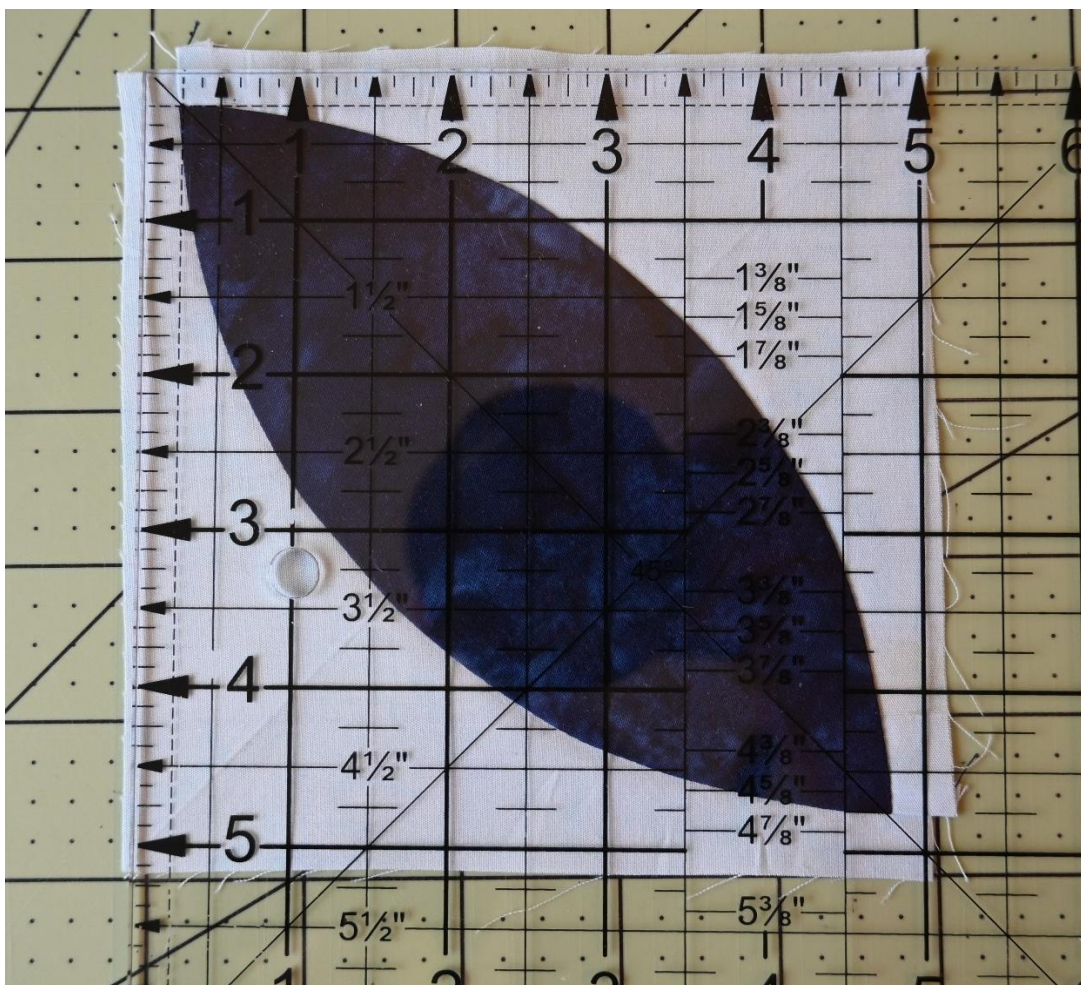


Completed seam on second background piece. Clip the curve on your small unit.

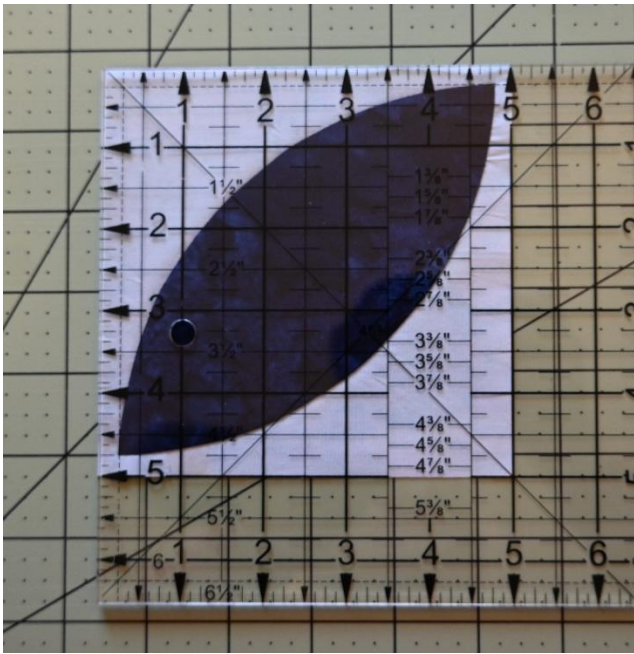


Press your seams and then press your blocks flat.

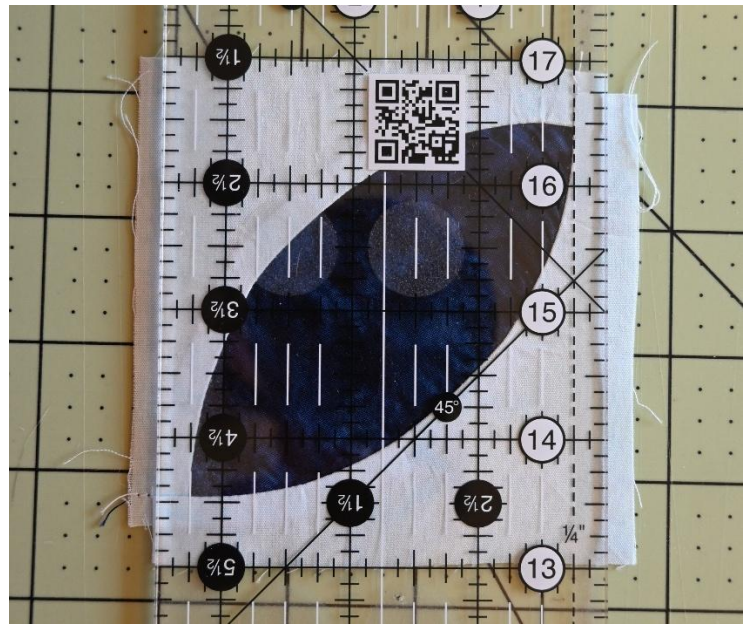
Your blocks will look rather concerning at this point but don't panic.



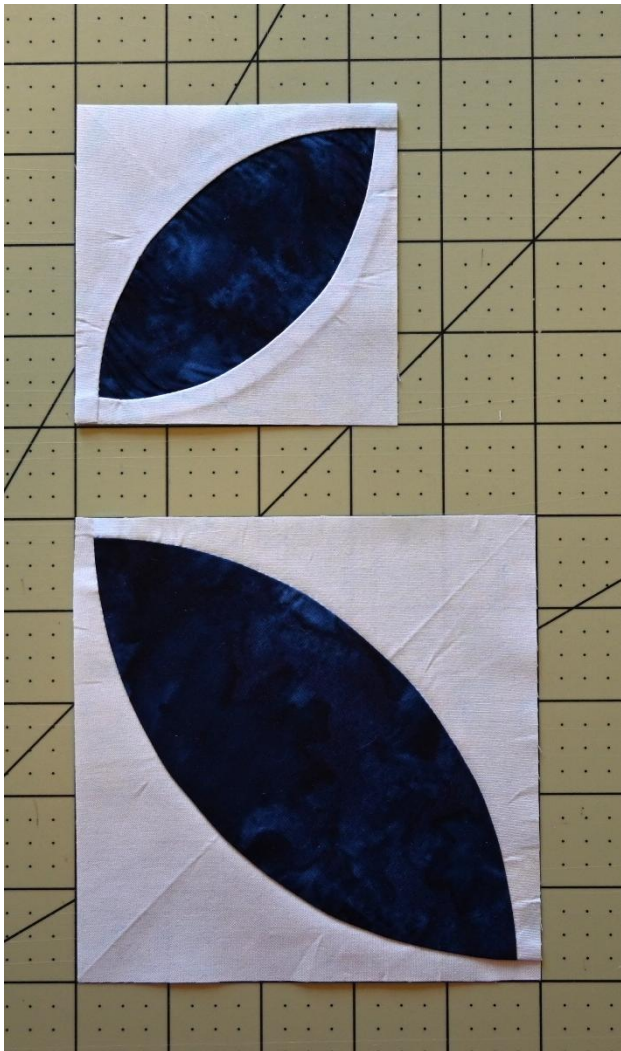
Trim your larger block to 5" square. Make sure you have a 1/4" seam allowance on your corners.



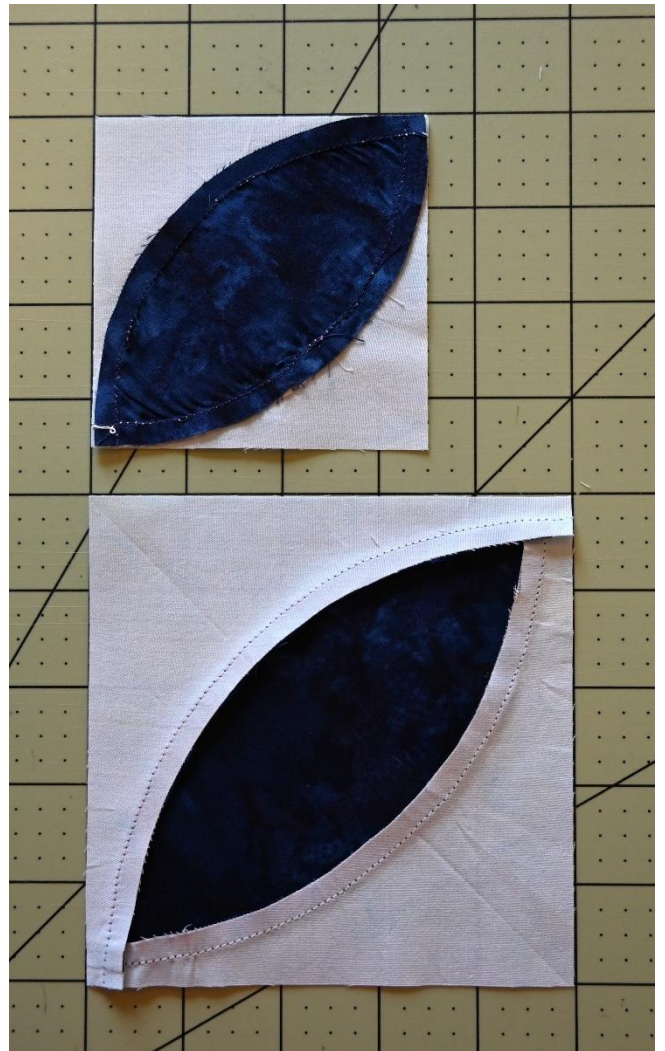
Large block trimmed to 5" square.



Use the same process to trim your little block to 3 1/2" square. (This is a 3 1/2" ruler).



Completed blocks front.



Completed blocks back.