

## OM Seating YS Series

The YS Lab Stool Series from OM Seating is our most popular mesh-back fully ergonomic seating option for lab, healthcare and similar task-oriented applications. Featuring breathable black mesh backrest and seat with a saddle contour, the YS offers both comfort and a contemporary design. Backed by a 12-year warranty, it is a reliable and durable ergonomic seating choice for a wide range of environments.

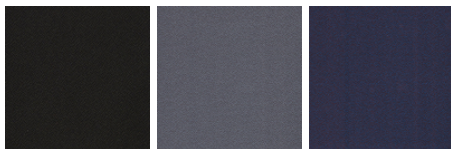


### Features:

- Backrest: 19"W x 20"H black mesh
- Seat: 20.5" W x 18 - 21.1"D saddle-contoured seat
- Adjustments: Seat height, seat slider, independent back angle
- Seat Height: 25" - 33" (pneumatic lift)
- Base: Spider tubular base with welded-on footring, chromed finish  
\*Alternative aluminum base/adjustable footring combination
- Armrests: 4D - motion, forward slanting T-arms with pivoting arm top
- Casters: Multi-surface casters, 65mm
- Weight Capacity: 300 lbs.

### Standard Upholstery Options:

#### Grade 1 Commercial/Contract

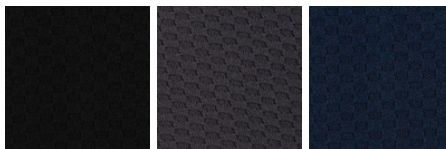


Oberon 1200

Pepper 1161

Juniper 1164

#### Grade 2 Softsit



Graphene 2570

Basalt 2571

Kelvin 2574

#### Grade 3 Healthcare/Polyurethane



Noir 3P30

Academy 3P31

Blockbuster 3P34

#### Grade 4 Healthcare/Crypton



Jet 4C00

Gunmetal 4C01

Indigo 4C04

#### Grade 5 Comfortknit



Flint 5501

Smoke 5503

Baltic 5515



Contact us for special upholstery options

**Manufacturer:** OM Seating - California, US  
**Warranty:** 12 years limited  
**Certifications:** BIFMA, Greenguard Gold, GSA