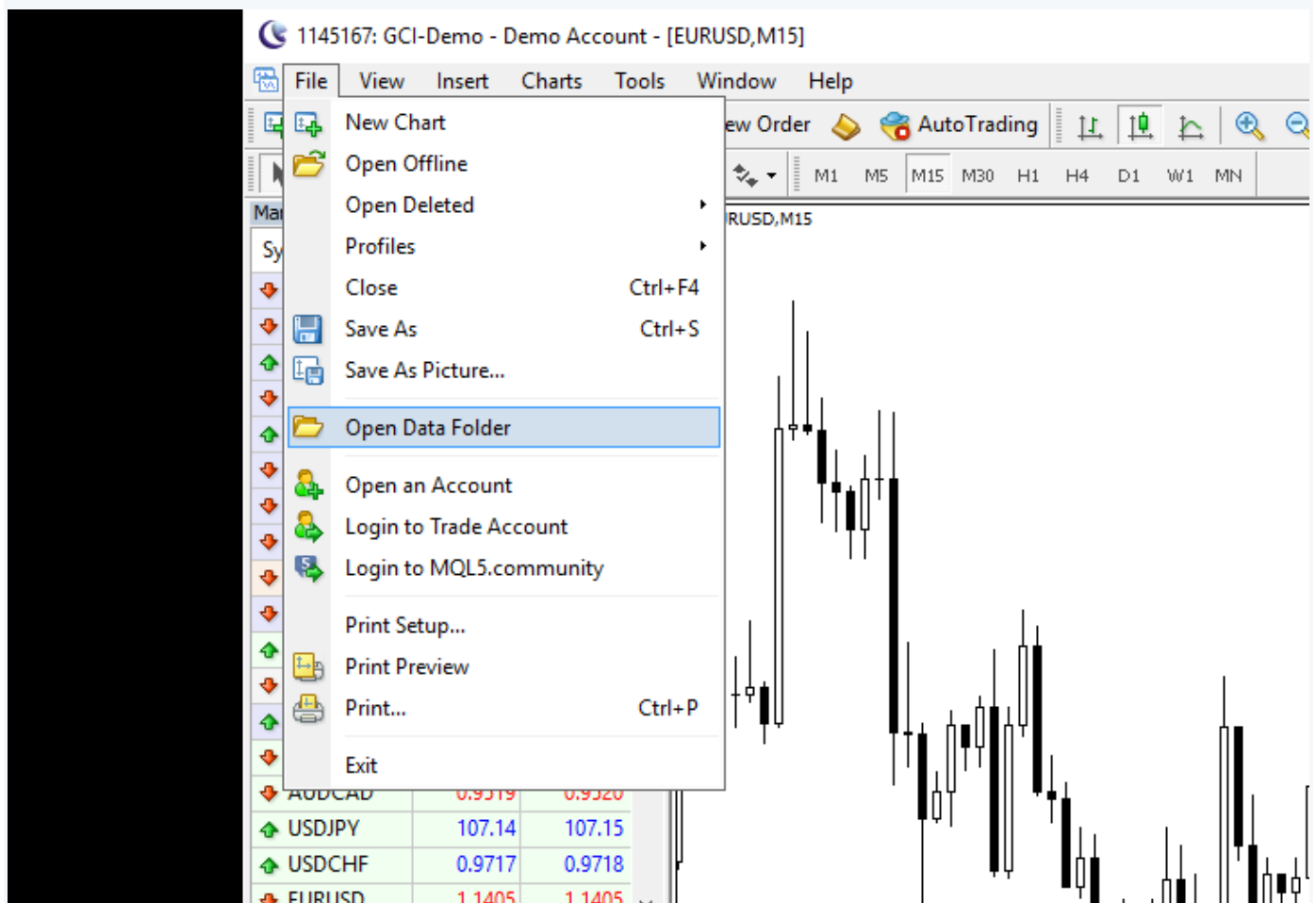


MetaTrader Expert Advisors — Installation Tutorial

Using [MetaTrader expert advisors](#) is simple, but sometimes people get confused about it. After downloading an expert advisor file, a user might get stuck with it without knowing what to do next. Here is a simple tutorial on how to attach an expert advisor to a MetaTrader chart and activate it for trading. The process is quite similar to [installing a new indicator](#), but there are some differences.

The tutorial reflects the most current and easiest way to install new expert advisors in MetaTrader — both MT4 and MT5. Since MT4 Build 600, there is no difference in the way it is done in the two versions of the platform.

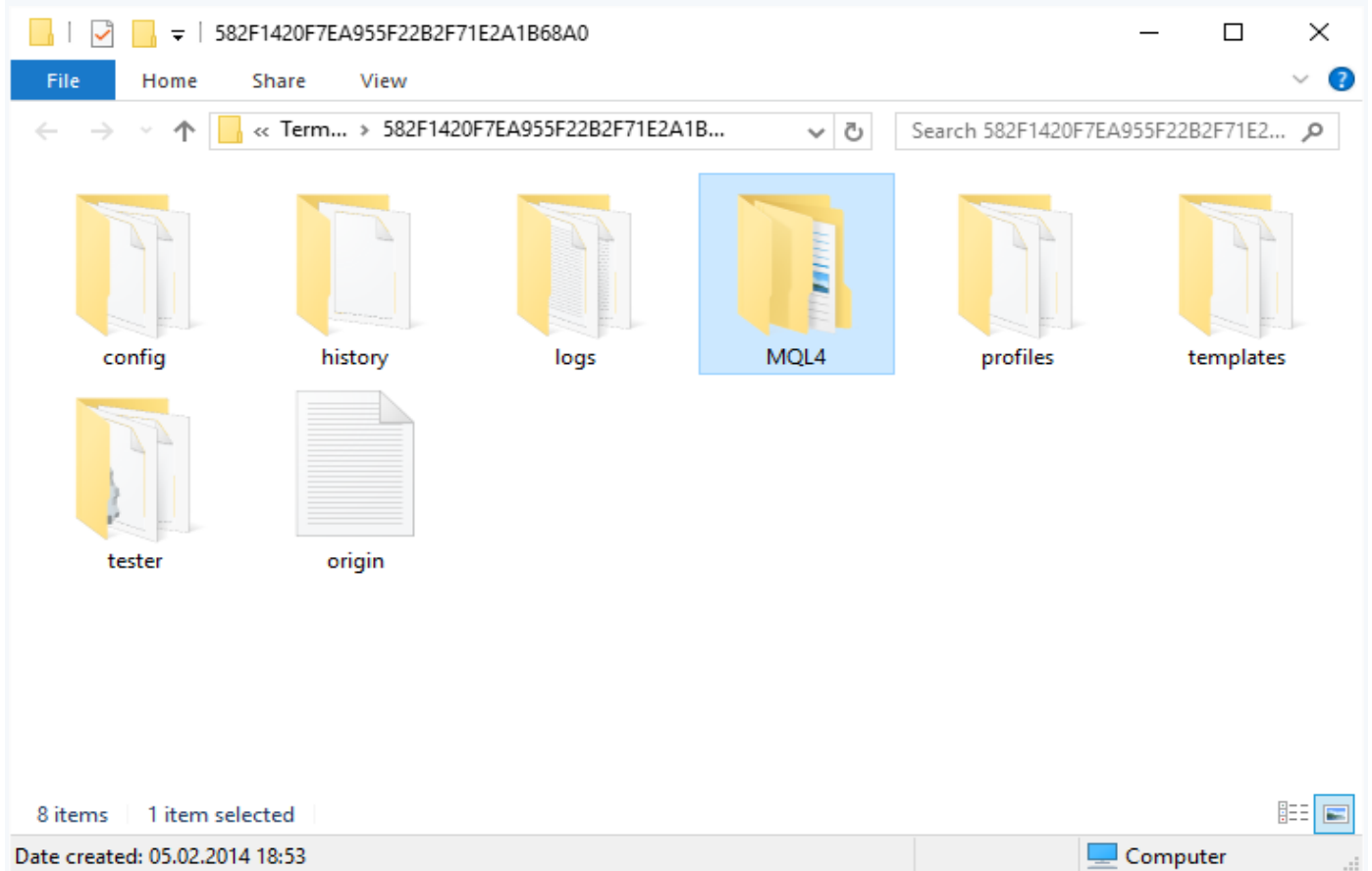
1. Download an MT4/MT5 expert advisor and save it anywhere on your PC.
2. Launch your trading platform.
3. Open the platform's data folder via menu *File->Open Data Folder*:



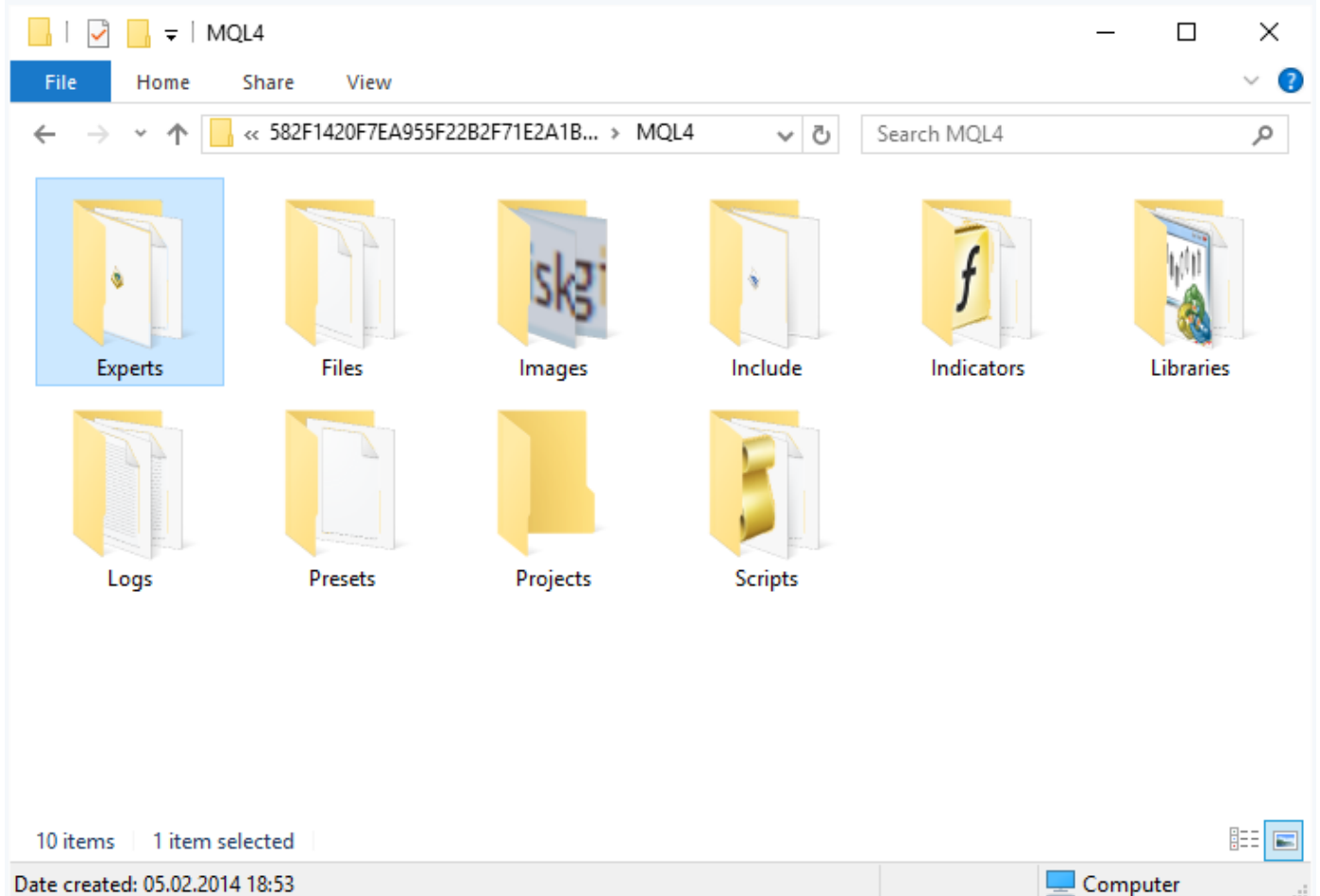
Alternatively, you can navigate to the folder using Windows Explorer:

```
C:\Users\AppData\Roaming\MetaQuotes\Terminal
```

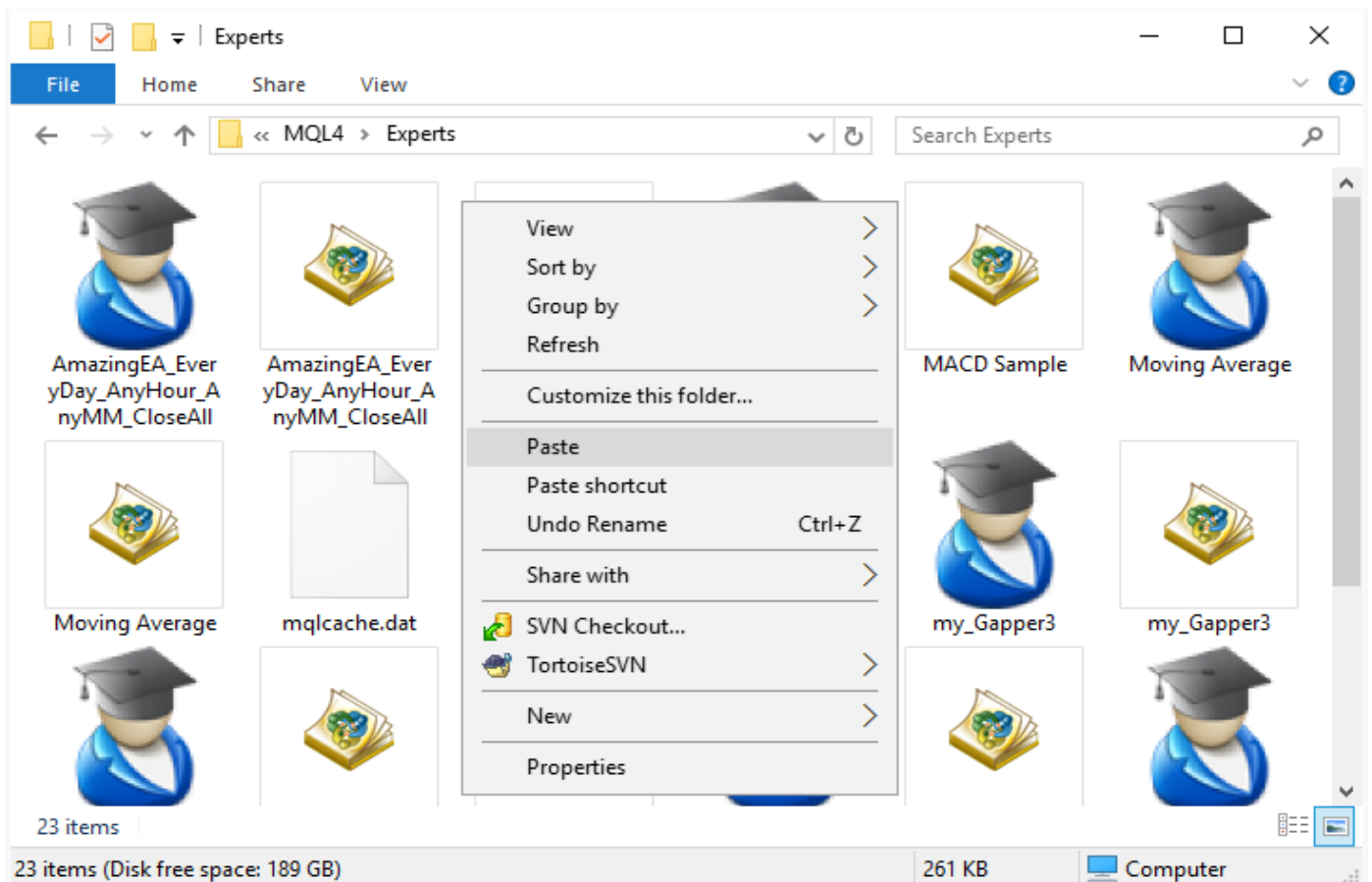
4. Open *MQL4* folder (or *MQL5* if you are installing an MT5 EA):



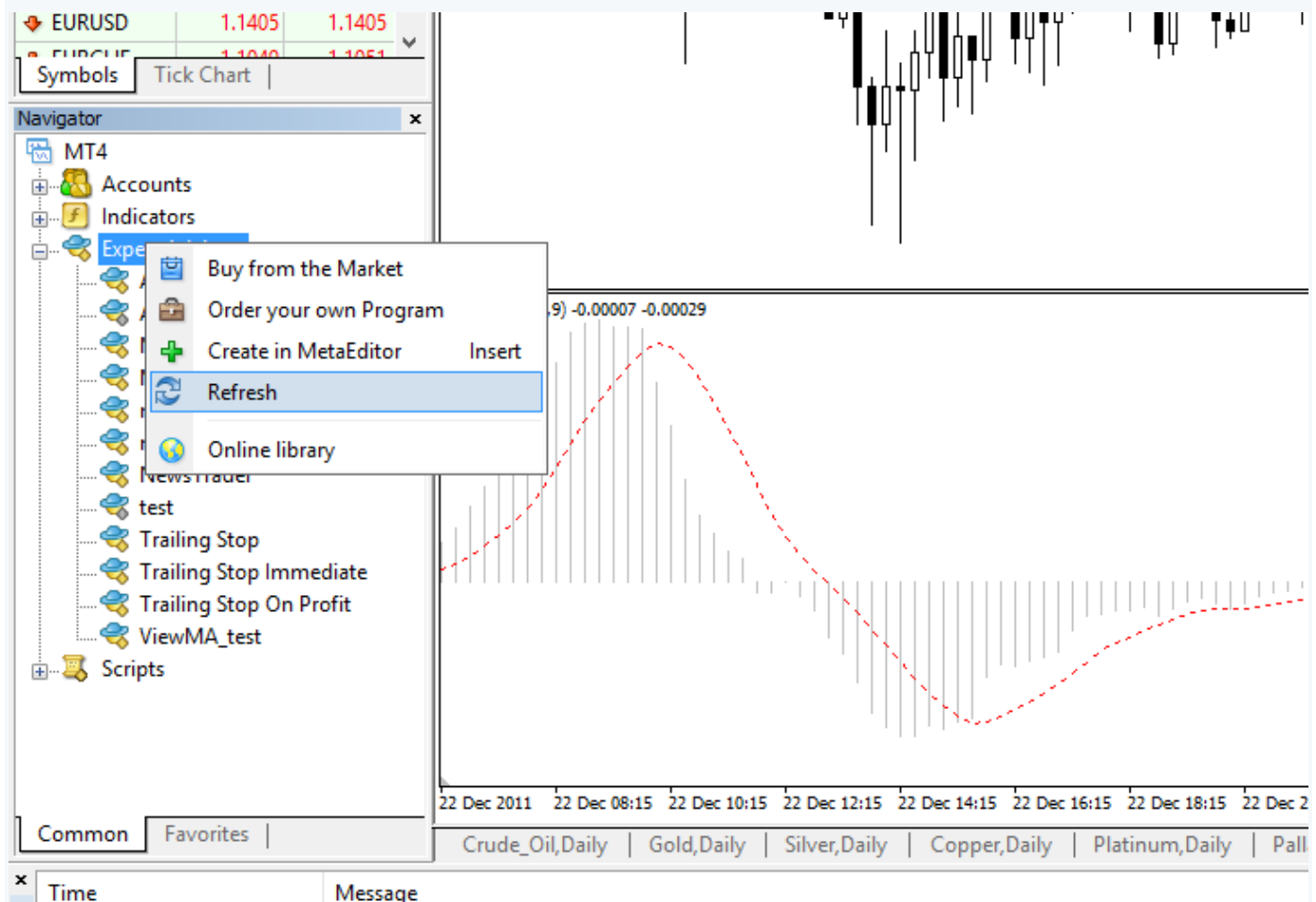
5. Open *Experts* folder:



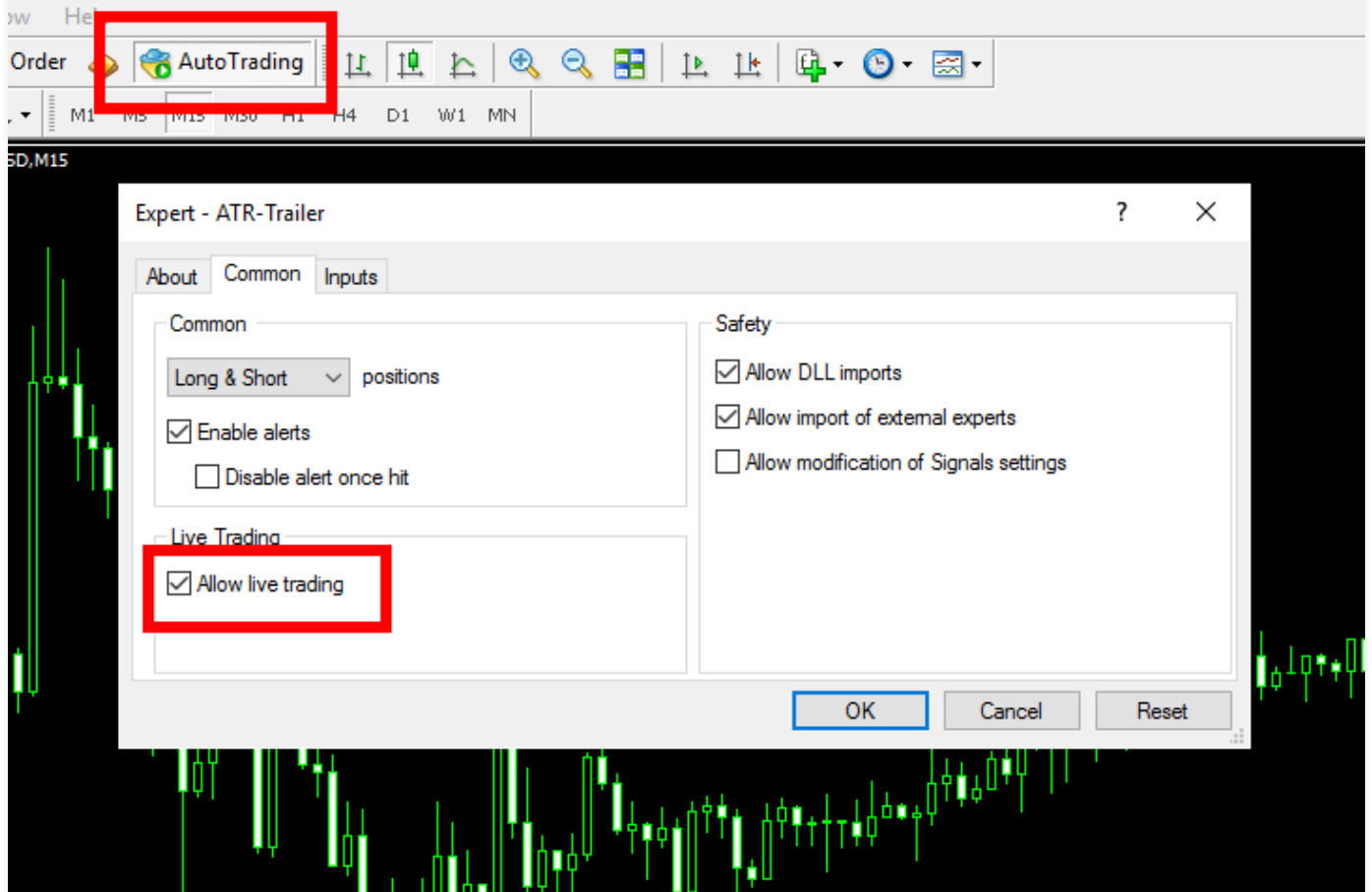
6. Paste your expert advisor file here:



7. If it is an already compiled file (.ex4 or .ex5), then fine. All you need to do is return to your MetaTrader, right-click on *Expert Advisors* in the *Navigator* panel and click *Refresh*. The new expert advisor will appear in the same *Navigator* panel:



M15]



11. Additionally, you can change some of the advisor's input parameters in the *Inputs* tab:

