

SELECT DOSER™ PARTS LIST

UPDATED 04/14/2026

Please contact your Distributor / Dealer for updated Pricing.

Purchase Orders must be e-mailed to selectdoser@genesisinstruments.com with accurate item numbers.

New Pump Set Ups require a completed questionnaire as water flow rate, water pressure, sensor flow range, pump tube flow range and desired dosing ratios are factors in selecting the correct equipment. Download questionnaire at www.genesisinstruments.com/select-doser

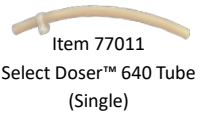
More Information on parts, equipment selection, installation videos and documents can be found at www.genesisinstruments.com/select-doser



Item 77002
Select Doser™ 640 Kit,
3/4" Sensor, Std Gal



Item 77017
Install Kit, Select Doser™ 640



Item 77011
Select Doser™ 640 Tube
(Single)



Item 77014-2
Tube Connector, 3/16" (Bag of 2)



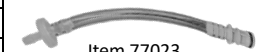
Item 77020-5
Check Valve, 3/16" (Bag of 5)



Item 77032-1
Quick Fit Male Connector
(Single)



Item 77035-1
Quick Fit Female Connector
(Single)



Item 77023
Check Valve Assembly, 3/16"
with Quick Fit Male Connector

SELECT DOSER™ 640 PUMPS & PUMP KITS

ITEM	ITEM #
Select Doser™ 640 Kit with 3/4" Turbine Sensor – Standard Gallon Program	77002
Select Doser™ 640 Kit with 3/4" Turbine Sensor – Standard Liter Program	77004
Select Doser™ 640 Kit with 1 1/4" Turbine Sensor – Choose Standard Gallon or Standard Liter	77003
Select Doser™ 640 with Power Supply (No Sensor, No Install Kit)	77005

SELECT DOSER™ 640 PUMP TUBES, TUBING & FITTINGS

Install Kit, Select Doser™ 640	77017
Select Doser™ 640 Tubes (12 Pack)	77008
Select Doser™ 640 Tube (1 Pack)	77011
Tube Connector, 3/16" – 3/16" (Bag of 2), Select Doser™ 640	77014-2
Tube Connector, 3/16" – 3/16" (Bag of 10), Select Doser™ 640	77014-10
Check Valve, 3/16" (Bag of 5), Select Doser™ 640	77020-5
Check Valve, 3/16" (Bag of 50), Select Doser™ 640	77020-50
Quick Fit Male Connector (Single), Select Doser™ 640	77032-1
Quick Fit Male Connector (Bag of 5), Select Doser™ 640	77032-5
Quick Fit Female Connector (Single), Select Doser™ 640	77035-1
Quick Fit Female Connector (Bag of 5), Select Doser™ 640	77035-5
Check Valve Assembly, 3/16" With Quick Fit Male Connector, Select Doser™ 640	77023
Injection Port, 3/4" with PVC Tee For Select Doser™ 640	77029
Inlet Tube, 10 ft with Weight, Select Doser™ 640	77038
3/16" ID Clear PVC Tubing (Per Foot), Select Doser™ 640	77041
Inlet Tube Filter Assembly, Select Doser™ 640	77044
Inlet Tube Filter, Select Doser™ 640	77047
Check Valve, 1/4"	77026

SELECT DOSER™ 640 PUMP PARTS & ACCESSORIES

12V 5A Power Supply For Select Doser™ 640/380	77080
Rollers, Select Doser™ 640	77051
Pump Head Assembly, Select Doser™ 640	77054
Pump Head Cover, Select Doser™ 640	77057
Thumb Screw, 6/32, For Select Doser™ 640 Pump Head Cover	77060
Magnetic Holder, Select Doser™ 640	77075
Motor, Select Doser™ 640	77063
Motor With 2 Leads, Select Doser™ 640	77066
Circuit Board Assembly, Select Doser™ 640	77069



Item 77057
Pump Head Cover
Select Doser™ 640



Item 77054
Pump Head Assembly
Select Doser™ 640



Item 77051
Rollers, Select Doser™ 640



Item 77080
12V 5A Power Supply



Item 77044
Inlet Tube Filter Assembly



Item 77038
Inlet Tube, 10 ft with Weight



Item 77060
Thumb Screw 6/32
Select Doser™ 640



Item 77075
Magnetic Holder
Select Doser™ 640



Item 77066
Motor with 2 Leads
Select Doser™ 640



Item 77063
Motor
Select Doser™ 640



Item 77069
Circuit Board Assembly
Select Doser™ 640



Item 77029
Injection Port, 3/4"
Select Doser™ 640

SELECT DOSER™ 380 PRODUCT LINE PUMPS & PUMP KITS

ITEM	ITEM #
Select Doser™ 380 Kit with 3/4" Turbine Sensor – Choose Standard Gallon Or Liter Program	77301
Select Doser™ 380 Kit with 1 1/4" Turbine Sensor – Choose Standard Gallon Or Liter Program	77302
Select Doser™ 380 with Power Supply (No Sensor, No Install Kit)	77300
Select Doser™ 382 with Power Supply (No Sensor, No Install Kit)	77305
Select Doser™ 388 with Power Supply (No Sensor, No Install Kit)	77304

**SELECT DOSER™ 380 PRODUCT LINE PUMP PARTS, TUBING, FITTINGS & ACCESSORIES
(PUMP TUBE / ROLLER REQUIRED DEPENDS ON PROGRAM)**

12V 5A Power Supply for Select Doser™ 380/640	77080
12V 10A Power Supply for Select Doser™ 382/388	77085
Install Kit, Select Doser™ 380	77303
Install Kit, Select Doser™ 382/388	77310
Stenner Roller Assembly, Black (For H Pump Tube), Select Doser™ 380/382/388	77306
Pump Tube, Stenner H (Tube Required Depends on Program), Select Doser™ 380/382/388	77309
Stenner Roller Assembly, White (For F Pump Tube), Select Doser™ 380/382/388	77312
Pump Tube, Stenner F (Tube Required Depends on Program), Select Doser™ 380/382/388	77315
PVC Tubing, 1/4" X 20', Stenner, Select Doser™ Max/380/382/388	77287
1/4" Ferrules, Stenner (5 Pack), Select Doser™ Max/380/382/388	77290
Connecting Nuts, 1/4" Tubing, Stenner (3 Pack), Doser™ Max/380/382/388	77292
Injection Port with Duckbill, Stenner, Select Doser™ Max/380/382/388	77294
Stenner Check Valve, Duckbill (Included with Injection Port)	77296
1 1/2" PVC Assembly with Stenner Injection Port, Doser™ Max/380/382/388	77260
2" PVC Assembly with Stenner Injection Port, Doser™ Max/380/382/388	77270
3" PVC Assembly with Stenner Injection Port, Doser™ Max/380/382/388	77280
Weighted Line Strainer, Stenner, Select Doser™ Max/380/382/388	77298
Circuit Board Assembly, Select Doser™ 380/382/388	77235



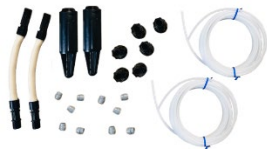
Item 77301
Select Doser™ 380 Kit,
3/4" Sensor, Std Gal or L



Item 77302
Select Doser™ 380 Kit,
1 1/4" Sensor, Std Gal or L



Item 77305
Select Doser™ 382 with Power
Supply (No Sensor, No Install Kit)



Item 77310
Install Kit,
Select Doser™ 382 / 388



Item 77303
Install Kit,
Select Doser™ 380



Item 77085
12V 10A Power Supply,
Select Doser™ 382 / 388



Item 77080
12V 5A Power Supply,
Select Doser™ 380



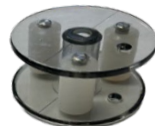
Item 77304
Select Doser™ 388 with Power
Supply (No Sensor, No Install Kit)



Item 77306
Stenner Rollers, Black
For H Pump Tube
Select Doser™ 380/382/388



Item 77309
Pump Tube, Stenner H
Goes with Black Rollers
Select Doser™ 380/382/388



Item 77312
Stenner Rollers, White
For F Pump Tube
Select Doser™ 380/382/388



Item 77315
Pump Tube, Stenner F
Goes with White Rollers
Select Doser™ 380/382/388



Item 77287
PVC Tubing, 1/4" X 20',
Select Doser™ Max/ 380/382/388



Item 77290
1/4" Ferrules, (5 Pack)
Select Doser™ Max/
380/382/388



Item 77292
Connecting Nuts
1/4" Tubing, (3 Pack)
Select Doser™ Max/ 380/382/388



Item 77294
Injection Port with
Duckbill, Stenner
Select Doser™ Max/
380/382/388



Item 77296
Stenner Check Valve,
Duckbill Select Doser™
Max/ 380/382/388



Item 77270
2" PVC Assembly
with Stenner Injection Port
Select Doser™ Max/
380/382/388



Item 77298
Weighted Line Strainer,
Stenner, Select Doser™
Max/ 380/382/388

SELECT DOSER™ MAX PUMPS & PUMP KITS

ITEM	ITEM #
Select Doser™ Max Kit with 3/4" Turbine Flow Sensor	77200
Select Doser™ Max Kit with 1 1/4" Turbine Flow Sensor	77205
Select Doser™ Max Kit with 1 1/2" Paddle Flow Sensor, Saddle Fitting	77203
Select Doser™ Max Kit with 2" Paddle Flow Sensor, Saddle Fitting	77206
Select Doser™ Max Kit with 3" Paddle Flow Sensor, Saddle Fitting	77211
Select Doser™ Max Kit with 1" Magmeter Flow Sensor	77217
Select Doser™ Max Kit with 2" Magmeter Flow Sensor	77220
Select Doser™ Max Kit with 3" Magmeter Flow Sensor	77223
Select Doser™ Max with Power Supply (No Sensor, No Install Kit)	77214
Select Doser™ Max Dual Pump with Power Supply (No Sensor, No Install Kit)	77207
Select Doser™ Max Dual Pump Kit with 3/4" Turbine Flow Sensor	77201
Select Doser™ Max Dual Pump Kit with 1 1/4" Turbine Flow Sensor	77202

SELECT DOSER™ MAX PUMP PARTS, TUBING, FITTINGS & ACCESSORIES

12VDC Power Supply, Select Doser™ Max	77081
Install Kit, Select Doser™ Max	77284
Quick Pro Collapsible Rollers, Select Doser™ Max	77275
Fixed Rollers, Clear, Select Doser™ Max	77278
Stenner Pump Tube #1 (Tube Required Depends on Program), Select Doser™ Max	77226
Stenner Pump Tube #2 (Tube Required Depends on Program), Select Doser™ Max	77229
Stenner Pump Tube #7 (Tube Required Depends on Program), Select Doser™ Max	77232
PVC Tubing, 1/4" x 20', Stenner, Select Doser™ Max/380/382/388	77287
1/4" Ferrules, Stenner (5 Pack), Select Doser™ Max/380/382/388	77290
Connecting Nuts, 1/4" Tubing, Stenner (3 Pack), Doser™ Max/380/382/388	77292
Injection Port with Duckbill, Stenner, Select Doser™ Max/380/382/388	77294
Stenner Check Valve, Duckbill (Included with Injection Port)	77296
1 1/2" PVC Assembly with Stenner Injection Port, Doser™ Max/380/382/388	77260
2" PVC Assembly with Stenner Injection Port, Doser™ Max/380/382/388	77270
3" PVC Assembly with Stenner Injection Port, Doser™ Max/380/382/388	77280
Weighted Line Strainer, Stenner, Select Doser™ Max/380/382/388	77298
Rain Roof, Stenner, Select Doser™ Max	77242
Phenolic Gear, Stenner, Select Doser™ Max	77245
Hall Effect / Tube Burst Cable Assembly, Select Doser™ Max	77236
Stenner Pump Head with Quick Pro Rollers #1 Tube, Select Doser™ Max	77251
Stenner Pump Head with Quick Pro Rollers #2 Tube, Select Doser™ Max	77254
Stenner Pump Head with Quick Pro Rollers #7 Tube, Select Doser™ Max	77248
Stenner Pump Head with Fixed Rollers, #1 Tube, Select Doser™ Max	77257
Stenner Pump Head with Fixed Rollers, #2 Tube, Select Doser™ Max	77261
Stenner Pump Head with Fixed Rollers, #7 Tube, Select Doser™ Max	77263
Stenner Tube Housing with Latches, Select Doser™ Max	77266
Stenner Tube Housing Cover, Select Doser™ Max	77269
Stenner Quick Pro Latch, 2 Pack, Select Doser™ Max	77272
Circuit Board Assembly, Select Doser™ Max	77239



Item 77200
Select Doser™ Max Kit,
3/4" Sensor, Std Gal or L



Item 77206
Select Doser™ Max Kit,
2" Paddle Sensor, Std Gal or L



Item 77214
Select Doser™ Max with Power
Supply (No Sensor, No Install Kit)



Item 77207
Select Doser™ Max Dual Pump
with Power Supply (No Sensor,
No Install Kit)



Item 77284
Install Kit,
Select Doser™ Max



Item 77242
Rain Roof, Stenner
Select Doser™ Max



Item 77226
Stenner Pump Tube #1
Select Doser™ Max



Item 77278
Fixed Rollers, Clear
Select Doser™ Max



Item 77275
Quick Pro Collapsible Rollers
Select Doser™ Max



Item 77245
Phenolic Gear, Stenner
Select Doser™ Max



Item 77236
Hall Effect / Tube Burst Cable
Select Doser™ Max



Item 77269
Stenner Tube Housing Cover
Select Doser™ Max



Item 77266
Stenner Tube Housing with
Latches, Select Doser™ Max



Item 77248
Stenner Pump Head with
Quick Pro Rollers, #7 Tube

FLOW SENSORS

FLOW SENSORS MEASURE THE WATER FLOW RATE AND SEND PULSES TO THE SELECT DOSER™ RESULTING IN PROPORTIONATE DOSING.

TURBINE FLOW SENSORS

ITEM	ITEM #
VTY 10, 3/4" Turbine Flow Sensor (5 GPH – 450 GPH)	77404
VTY 10, 3/4" Turbine Flow Sensor Assembly for 640 (5 GPH – 450 GPH)	77401
VTY 10, 3/4" Turbine Flow Sensor Assembly for Max/380 (5 GPH – 450 GPH)	77210
VTY 10, 3/4" Turbine Flow Sensor Assembly with Dual Injection Ports	77208
Coupler (British Pipe Threads), 3/4"	77407
VTH 25, 1 1/4" Turbine Flow Sensor (50 GPH – 2,500 GPH)	77413
VTH 25, 1 1/4" Turbine Flow Sensor Assembly for 640 (50 GPH – 2,500 GPH)	77410
VTH 25, 1 1/4" Turbine Flow Sensor Assembly for Max/380 (50 GPH – 2,500 GPH)	77215
VTH 25, 1 1/4" Turbine Flow Sensor Assembly with Dual Injection Ports	77209
Coupler (British Pipe Threads), 1 1/4"	77416
Plastic Washer, 1.5" OD x 1.0" ID, VTH 25	77425
VTH 25, 1 1/4" Turbine Flow Sensor Cable	77419

CLAMP ON FLOW SENSORS

FDX, 1/2" (0.5 GPH – 757 GPH) Clamp-On Digital Micro Flow Sensor	77540
FDQ, 1/2" (40 GPH – 954 GPH) to 3/4" (40 GPH – 1,585 GPH) Clamp-On Digital Flow Sensor	77541
FDQ, 1" (79 GPH – 3,170 GPH) to 1 1/4" (79 GPH – 4,755 GPH) Clamp-On Digital Flow Sensor	77542
FDQ, 1 1/2" (396 GPH – 6,340 GPH) to 2" (396 GPH – 7,925 GPH) Clamp-On Digital Flow Sensor	77543

PADDLE FLOW SENSORS

1 1/2" Paddle Flow Sensor, PVC Tee Assembly Kit, Max/380 (900 GPH – 9,000 GPH)	77428
2" Paddle Flow Sensor, PVC Tee Assembly Kit, Max/380 (1,800 GPH – 18,000 GPH)	77431
3" Paddle Flow Sensor, PVC Tee Assembly Kit, Max/380 (3,600 GPH – 36,000 GPH)	77434
1 1/2" Paddle Flow Sensor, In-Line Mold Kit, Max/380 (360 GPH – 3,600 GPH)	77437
2" Paddle Flow Sensor, In-Line Mold Kit, Max/380 (1,200 GPH – 12,000 GPH)	77440
1 1/2" Paddle Flow Sensor, Saddle Fitting Kit, Max/380 (900 GPH – 9,000 GPH)	77446
2" Paddle Flow Sensor, Saddle Fitting Kit, Max/380 (1,800 GPH – 18,000 GPH)	77449
3" Paddle Flow Sensor, Saddle Fitting Kit, Max/380 (3,600 GPH – 36,000 GPH)	77452
Paddle Sensor with Plug (Flow Range Depends On Fitting)	77443

MAGMETER FLOW SENSORS

1" Magmeter Flow Sensor (138 GPH – 6,600 GPH)	77455
2" Magmeter Flow Sensor (360 GPH – 18,000 GPH)	77458
3" Magmeter Flow Sensor (840 GPH – 40,000 GPH)	77461

WATER METER OPTION

WATER METERS MAY BE COMPATIBLE TO SEND PULSES TO SELECT DOSER™ PUMPS

Water Meter Cable, M12 Connector	77537
----------------------------------	-------



Item 77404
VTY 10, 3/4" Turbine



Item 77401
VTY 10, 3/4" Turbine
Assembly for 640



Item 77210
VTY 10, 3/4" Turbine
Assembly for Max / 380



Item 77413
VTH 25, 1 1/4" Turbine



Item 77410
VTH 25, 1 1/4" Turbine
Assembly for 640



Item 77209
VTH 25, 1 1/4" Turbine
Assembly for Max / 380



Item 77208
VTH 25, 1 1/4" Turbine Assembly
with Dual Injection Ports



Item 77540
FDX, 1/2" Clamp-On



Item 77541
FDQ, 1/2" to 3/4" Clamp-On



Item 77542
FDQ, 1" to 1 1/4" Clamp-On



Item 77543
FDQ, 1 1/2" to 2" Clamp-On



Item 77434
3" Paddle, PVC Tee Kit



Item 77446
1 1/2" Paddle, Saddle Fitting Kit



Item 77440
2" Paddle, In-Line Mold Kit



Item 77443
Paddle Sensor with Plug



Item 77458
2" Magmeter Flow Sensor

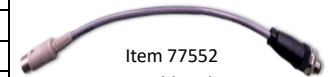


Item 77537
Water Meter Cable

PARTS COMMON TO ALL SELECT DOSER™ PUMPS	
ITEM	ITEM #
Sensor Cable Adapter (DIN Sensor Cable to M12 Doser Connection)	77551
Doser Cable Adapter (DIN Doser Socket to M12 Sensor Cable)	77552
Internal Power Wiring Harness	77514
Internal Flow Sensor Wiring Harness	77517
LCD Display Module	77529
Pigtail Parallel Cable, M12 Connector (Run 2 Pumps from 1 Sensor)	77531
Pigtail Parallel Cable, DIN Connector (Run 2 Pumps from 1 Sensor)	77532
DS Signal Splitter (Takes Pulse from Flow Sensor and Splits Pulse)	77533
Signal Out Adapter Lead (1 Pulse / Gal to Controller)	77535
Pressure Regulator, 3/4" Water Line	77538
Extended Cable Cost (per ft)	77422
LevelAlert Warning System (Visual Warning that Product Is Low)	77545
SPINSTIR™ & SPINSTIR™ PARTS	
Select SpinStir™ (1 Gallon to 5 Gallon Range), Includes All Components	77500
5 Gallon Bucket for Select SpinStir™	77502
Stirring Magnet, 2 1/2"	77505
12V Power Supply, SpinStir™	77508
Large SpinStir™ (5 Gallon to 55 Gallon Container Range)	77501
Stirring Magnet, 6"	77511
PROGRAMMING COMMON TO ALL SELECT DOSER™ PUMPS	
Processor Chip	77520
Programmed EEPROM Chip	77523
Custom Doser Program	77526
6H5 Plug-In (6 Hour Timed Dosing Out Of 5 Gallon Container)	77539



Item 77551
Sensor Cable Adapter



Item 77552
Doser Cable Adapter



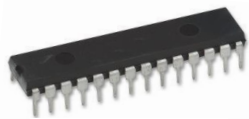
Item 77533
DS Signal Splitter



Item 77529
LCD Display Module



Item 77500
Select SpinStir™



Item 77520
Processor Chip



Item 77523
Programmed EEPROM Chip



Item 77539
6H5 Plug-In



Item 77545
LevelAlert Warning System



Item 77505
Stirring Magnet, 2 1/2"

Pricing

Please contact your Distributor / Dealer for updated pricing.

Purchase Orders

Customers must e-mail all **Purchase Orders** with part #s to selectdoser@genesisinstruments.com. We will respond to your purchase order with a sales order confirmation. The sales order confirmation is not your final invoice. Your final invoice will be sent by mail or e-mail.

Repairs

Customers must e-mail selectdoser@genesisinstruments.com to notify us of a repair to be sent in. Please include as many details as possible. We will respond with an RMA number to put on the box for shipment. Please ship repairs to: **Genesis Instruments 200 Main St. Elmwood, WI 54740** with provided RMA # on the box. Once we receive the product, we typically have a 1-2 business day turnaround on repairs. If you need a quote, you must ask for one. Labor on repairs is billed at \$75 / hour.

Customers Performing Repairs

Genesis Instruments offers repair parts to customers who attempt to repair equipment on their own. Genesis Instruments is not liable for damage caused by the customer's repair work.

Warranty

Genesis Instruments warrants the Select Doser™ to be free of defects due to parts or workmanship for one year from the date of purchase. Since we cannot control water conditions, Genesis Instruments will not warrant any flow sensors that are damaged due to mineral deposits, or any other water borne contaminants. Genesis Instruments will not warrant any pumps that are damaged due to leaking pump tubes.

Website

For more information on parts, installation videos, pump / sensor selection, helpful documents and manuals please visit, www.genesisinstruments.com/select-doser

