

Classic Commemorative Silver



- 1043P. Isabella Quarter, 1893. Lustrous attractively toned Choice to Gem Unc, very nice eye appeal!
- 1044. Isabella Quarter, 1893, colorfully toned Choice EF-AU, lt old cleaning and a few wispy marks and scs. Also, Columbian Expo Halves, 1892, clnd VF, rms and 1893, retoned EF, cpl marks. 3 coins.



- 1045P. Lafayette Dollar, 1900. DuVall 2-C, Hairlined Choice EF-AU. Still pleasing with luster remaining.
- 1046. Lafayette Dollar, 1900. Semi-reflective EF-AU, some faint stray hairlines with hints of golden toning near the rim.
- 1047. Lafayette Dollar, 1900. Hairlined EF-AU.
- 1048. Alabama Centennial, 1921(2), avg clnd EF-AU, cpl pin scs and tone spots; Long Island Tercentenary, 1936, clnd AU, wispy sc obv; Rhode Island, 1936, pale gold Unc, small carbon flecks/spots and Robinson-Arkansas, 1936, ltly wiped Unc; San Diego, 1935-S, hairlined AU; Sesquicentennial, 1926, hairlined/polished AU-Unc and Stone Mountain, 1925, aUnc-Unc. 8 coins.
- 1049. Alabama Centennial, 1921, VF-EF, lt pin scs obv; Albany, NY 250th Anniversary, 1936, ltly clnd lustrous Unc; Arkansas Centennial, 1936-S, ltly clnd Unc; Boone Bicentennial, 1935-D, very ltly polished AU-Unc and Robinson-Arkansas, 1936, ltly clnd lustrous Unc. 5 coins.

- 1050. Albany, NY 250th Anniversary, 1936, lustrous Unc, a few scattered microscopic spots of verdigris reverse; Huguenot-Walloon Tercentenary, 1924, golden-gray toned Unc along with Arkansas Centennial, 1937; Robinson-Arkansas Centennial, 1936 and Long Island Tercentenary, 1936 - avg Unc, pale golden toned with freckled areas of deeper color, the last with scattered contact marks. 5 coins.



- 1051P. Antietam 75th Anniversary, 1937. Pale golden toned Unc with underlying luster, a few scattered flecks of verdigris keep this from a better grade. Popular Civil War topical commemorative.
- 1052. Bay Bridge, San Francisco-Oakland, 1936-S, MS65, frosty luster; Cleveland-Great Lakes Expo, 1936, MS65 OGH; San Diego, California-Pacific Expo, 1936-D, MS65 rattler and Sesquicentennial, 1926, MS63 OGH – all nice original PCGS graded examples, neat lot. 4 coins.
- 1053. Bay Bridge, San Francisco-Oakland, 1936-S and California Diamond Jubilee, 1925-S, avg lustrous AU-Unc to Unc, a few scattered marks and wispy hairlines along with Bridgeport, CT Centennial, 1936; Oregon Trail Memorial, 1936 and San Diego, California-Pacific Expo, 1936-S, avg Unc, some slight haze from long term storage, cpl ltly wiped. 5 coins.
- 1054. Bridgeport, CT Centennial, 1936, mottled toned Unc, possible old cleaning; California Diamond Jubilee, 1925-S, ltly hairlined Unc; Connecticut Tercentenary, 1935, golden toned AU; Maryland Tercentenary, 1934, clnd AU and San Diego, California-Pacific Expo, 1935-S, ltly clnd yet lustrous AU-Unc. 5 coins.



- 1055P. Cincinnati Music Center, 1936-PDS Set. All PCGS MS65 with original toning and consecutively numbered slabs, accompanied by the original holder of issue in excellent condition. 3 coins + original holder.
- 1056. Cincinnati Music Center, 1936, Choice AU-Unc, a few stray marks; Cleveland-Great Lakes Expo, 1936, lustrous Choice Unc; Elgin, IL, 1936, Unc, amber toning in devices and Wisconsin Centennial, 1936. Lustrous Unc to Choice Unc. 4 coins.
- 1057. Cincinnati Music Center, 1936-S, Unc-Choice Unc, golden toning obverse; Cleveland-Great Lakes Expo, 1936, frosty pale gold BU; Long Island Tercentenary, 1936, lustrous Unc to Choice Unc; Columbia, SC Sesquicentennial, 1936-D and Rhode Island Tercentenary, 1936-D, both deeply toned Unc-Choice Unc. 5 coins.
- 1058. Columbian Expo, 1892, polished EF and 1893, beautifully toned AU; Monroe Doctrine, 1923-S(2), colorful AU and clnd VF-EF along with a Stone Mountain 1925 trio, Unc & cleaned EF-AU(2). 7 coins.

Call Us For A Consultation Today!

**We can help you with your collection
either buying or selling**

517-394-4443

1059. Connecticut Tercentenary, 1935, golden toned Unc, underlying luster and Maryland Tercentenary, 1934, lustrous mostly white Borderline AU-Unc. 2 coins.
1060. Delaware Tercentenary, 1936 and York County Tercentenary, 1936, both NGC MS64 along with Lynchburg, VA Sesquicentennial, 1936, PCGS MS65, gold and lilac toning. Sharp trio. 3 coins.
1061. Delaware Tercentenary, 1936, delicately toned Choice to Gem Unc; Elgin, Illinois Centennial, 1936 and Texas Centennial, 1934, both golden toned Unc with freckles of deeper colored toning. 3 coins.



- 1062P. Gettysburg 75th Anniversary, 1937. Handsome ltlly toned Unc to Choice Unc.
1063. Grant Memorial, 1922, deeply toned EF-AU; Huguenot-Walloon Tercentenary, 1924, pleasing amber toned Unc to Choice Unc; Iowa Centennial, 1946, BU; Lexington-Concord, 1925(2), Unc and hairlined AU; Maine Centennial, 1920, Fine, old marks as well as Stone Mountain, 1925(2), pale gold frosty Unc and AU, spot obverse. 8 coins.



- 1064P. Hawaiian Sesquicentennial, 1928. Lustrous ltlly toned AU, cpl stray marks.



- 1065P. Hudson, NY Sesquicentennial, 1935. Lustrous pale golden Unc to Choice Unc, a few stray marks from a higher grade.

Questions on a lot? Set up an appointment to view lots in the privacy of our offices today. Evenings & weekend times are available and lots can be viewed only prior to Auction Day. Lot viewing in person can give you a bidding advantage over those who do not view!



- 1066P. Hudson, NY Sesquicentennial, 1935. Appealing golden toned lustrous Unc to Choice Unc.



- 1067P. Hudson, NY Sesquicentennial, 1935. Lustrous Unc, some freckled golden toning and faint contact.

1068. Huguenot-Walloon Tercentenary, 1924; Lexington-Concord Sesquicentennial, 1925 and Pilgrim Tercentenary, 1920, avg cld AU along with Long Island Tercentenary, 1936; Maine Centennial, 1920 and Texas Centennial, 1936, avg toned Unc. 6 coins.

1069. Long Island Tercentenary, 1936, toned Unc, some carbon flecking; Maine Centennial, 1920, colorful retoned AU; Monroe Doctrine, 1923-S(2), handsome amber toned lustrous Unc and cld EF-AU; Pilgrim Tercentenary, 1920(2), mottled gold toned AU and cld EF-AU along with Grant Memorial, 1922, toned AU, rn rev and Stone Mountain, 1925, lustrous ltlly wiped Unc. 8 coins.

1070. Lynchburg, VA Sesquicentennial, 1936, attractive translucent amber toned lustrous Choice Unc and New Rochelle, NY, 1938, beautiful frosty original Choice to Gem Unc. Nice pair for the types. 2 coins.



- 1071P. Missouri Centennial, 1921. Attractive amber toned lustrous Unc to Choice Unc, a few random trace areas of die polish not to be confused with hairlines.

1072. Missouri Centennial, 1921, AU-Unc and Choice EF, both ltlly polished, now retoning in shades of gold and pale violet along with Alabama Centennial, Fine-VF, cpl old pin scs. 3 coins.

1073. Norfolk, VA Bicentennial, 1936, PCGS OGH MS64 CAC Gold tag with beautiful gold and pastel blue toning with great luster plus Roanoke Island, NC 350th Anniversary, 1937. NGC MS64, hints of golden toning. Nice pair. 2 coins.

1074. Norfolk, VA Bicentennial, 1936, lustrous apricot toned Choice Unc along with Roanoke Island, NC 350th Anniversary, 1937, frosty faint golden toned Choice Unc, nearly Gem. 2 coins.

1075. Norfolk, VA Bicentennial, 1936, Unc to Choice Unc; Norse American Centennial, 1925, thick flan, nice original toned AU, some It edge marks; Lexington-Concord, 1925, lustrous AU/EF and Stone Mountain, 1925, clnd EF, scattered tiny marks. 4 coins..
1076. Panama-Pacific Exposition, 1915-S, cleaned EF-AU, starting to retone; Lincoln-Illinois, 1918, ltly toned original Choice AU-Unc and Fort Vancouver Centennial, 1925, lustrous ltly toned AU-Unc, a few stray marks. 3 coins.
1077. Panama-Pacific Exposition, 1915-S, Hairlined EF, starting to retone; Fort Vancouver Centennial, 1925, ltly clnd AU and Vermont, 1927, deep golden-gray EF+. 3 coins.
1078. Rhode Island Tercentenary, ICG MS65; Sesquicentennial, 1926. PCGS MS63 with pastel toning along with slightly more common issues - Iowa Centennial, 1946, early small ANACS MS65; Booker T. Washington Memorial, 1946-D & 1951, both PCGS MS65, the first in OGH and American Eagle Silver Dollar, 1996, Unc, toning reverse. 6 coins.



- 1079P. Spanish Trail Memorial, 1935. Toned Unc. Always popular Key type to the Commemorative Series.



- 1080P. Spanish Trail Memorial, 1935. Slightly hazy AU-Unc, a few tiny marks yet still a pleasing Key to the set.
1081. Vermont Sesquicentennial, 1927, Unc with hints of toning, some tiny ticks along with Boone Bicentennial, 1935, golden toned lustrous Unc; Grant Memorial, 1922, very nice lustrous Choice Unc, typical die polish in fields and Lexington-Concord, 1925, pleasing Unc. 4 coins.
1082. Wisconsin Centennial, 1936, lustrous ltly toned Choice Unc and York County, Maine Tercentenary, 1936, Unc, splashes of gold color along with Roanoke Island, NC 350th Anniversary, 1937, lustrous champagne toned Choice Unc. 3 coins.
1083. Booker T. Washington, 1946-PDS Set plus 1946-S, 1947-D and 1950-S, Unc to Choice Unc along with other common date BTW(3) and Washington-Carver(5) types plus Columbian Expo, 1893(2), avg VF to EF-AU and Unc, some clnd as well as Sesquicentennial, 1926, whizzed AU-Unc, starting to retone; Cleveland-Great Lakes Expo, 1936, toned Unc; Iowa Centennial, 1946, Unc. A diverse grouping. 19 coins.

Be sure to place your bids early, tie bids are always awarded to the earliest Bidder!

1084. **Classic to Modern Commemorative Silver & More.** Features Columbian Expo, 1893 and Pilgrim, 1920 Halves, both lustrous ltly hairlined AU-Unc to Unc; Huguenot-Walloon Tercentenary, 1924, ltly hairlined lustrous Unc; Delaware Tercentenary, 1936, ltly clnd Unc, retoning in pale gold plus Long Island Tercentenary, 1936, Unc. Also, 40% Silver Bicentennial 3 Coin Set, 1976 and Silver Eagle, 1986-both cased Brilliant Proof; Commemorative Silver Dollars-1992 Columbus Proof(2) and 1993 Madison, Unc-no packaging; Silver CA Bicentennial, 1969 and undated 1oz .999 Silver Dollar sized Medallion issues, avg Unc along with Clad Coinage - Quarter, VA, 2000, Proof; Half Dollars, 2006-P, Satin Unc; SOL, 1986, Unc and Columbus, 1992 Proof plus Wheat Cents, 1936 and 1948-S, Unc. 20 pcs in all.

Modern Commemorative Silver & Clad Coinage

1085. **1980's Era Modern Commemorative Ensemble.** Features 1982 George Washington Silver Halves Proof(12) and Unc(9); 1983-P & 1983-PDS plus 1984-P Unc along with 1983/1984 Proof Olympic Silver Dollars; 1986 SOL Silver Dollar & Clad Half Proof Set and individual SOL Clad Halves(5); 1987 Constitution Proof(6) and Unc Silver Dollars; 1988 Olympics Proof(3) and Unc Silver Dollars as well as 1989 Congress Silver Dollar & Clad Half 2 Coin Sets Proof(4) and Unc(4). Nice grouping all in the original packaging, 29.25oz ASW. 63 coins.
1086. 1990 Eisenhower Centennial Proof(5) and Unc(5); 1991 Korean War Anniversary Proof(3) and Unc(3) & USO 50th Anniversary Proof(3) and Unc(3) Silver Dollars. Also, 1991 Mount Rushmore Silver Dollar & Clad Half 2 coin sets in Proof(2) and Unc(2) along with Clad Half, Unc. All in nice packaging of issue with COA's, 20.1oz ASW. 31 coins.
1087. 1992 White House Bicentennial Silver Dollars Proof(3) and Unc(3); 1993 Bill of Rights Silver Half Sets - Proof with Stamp(5) and Unc with Bronze Medal(3); WWII Clad Half & Bronze Medal Unc Sets(3); 1994 U.S. Capitol Bicentennial Silver Dollars - Proof Architectural Edition(3), plus standard Proof and Unc examples; Thomas Jefferson 250th Anniversary Silver Dollars - Proof(5), Unc(5) plus 3pc Unc Coin & Currency Sets(5) along with U.S. Veterans 3 Coin Silver Dollars Sets, Proof and Unc. All in nice packaging of issue with COA's, 27.627oz ASW. 48 coins + stamps and medals as issued.
1088. 1995 Special Olympics Silver Dollar Proof and Unc; 1996 National Community Service Silver Dollar Proof(3), Unc(3) & 2pc Proof Coin/Stamp Set(3); 1996 JFK Half Dollar, Proof Key Ring along with Silver Dollars - 1997 Law Enforcement Proof(3) & Unc(3); 1998 Black Patriots 2 Coin Proof & Unc Set; 1999 Dolly Madison 2 Coin Proof & Unc Sets(2) and 1999 Yellowstone 2 Coin Proof & Unc Set. All in fresh packaging of issue with COA's, 19.32oz ASW. 26 coins + 3 stamps.
1089. 1996 Atlanta Centennial Olympics 8 Coin Silver Dollar Proof Set. All Proof in case of issue with original box and COA. 8 coins.
1090. 1997 Botanic Garden Coin & Currency 3pc Set Featuring the Matte Specimen Nickel, Unc Silver Dollar and \$1 Banknote(5 Sets) plus additional Proof(3) and Unc(3) Silver Dollars. All in fresh packaging of issue with COA's. Nice lot. 16 coins + 5 notes.

NUMISMATIC AUCTIONS LLC
PO BOX 22026
LANSING, MI 48909
517-394-4443

1091. **1998 & 2014 Robert F. Kennedy & John F. Kennedy Commemorative Coinage Ensemble.** Includes 1998 R.F.K. Silver Dollar 2 Coin Proof & Unc Sets(2) and a Kennedy Collector's 2 Coin Set featuring the Silver J.F.K Matte Specimen Half Dollar and R.F.K. Unc Silver Dollar along with the 2014 50th Anniversary J.F.K. Silver Proof 4 Coin Half Dollar Set and Clad Unc 2 Coin Sets(5). All nice in fresh packaging of issue with COA's. 20 Coins.
1092. 2000 Leif Ericson and Library of Congress Silver Dollars in both Proof & Unc plus Millennium Coin & Currency Sets(5) each featuring 2000 Silver Eagle, Sac Dollar & \$1 FRN Unc examples; 2001 26pc Formation of the Union First 13 P&D Mint Statehood Quarters Unc in Folio(5 Sets) and Capitol Visitor Center Clad Half, Unc(no box); 2002 Military Academy Bicentennial Silver Dollars Proof(3) and Unc(3); 2003 First Flight Centennial Silver Dollars & Clad Halves in both Proof and Unc; 2004 Lewis & Clark Silver Dollars Proof and Unc plus Coin & Currency/Stamp Sets(3) each with Unc Silver Dollar, Sac \$1, Nickels(2) and medal/stamps along with Westward Journey 4 pc Coin & Medal Sets(4) as well as Thomas Edison Silver Dollars Proof and Unc plus a Collector Set with Edison \$1 and functional light bulb. All nice in fresh mint packaging with COA's, 21.24oz ASW. 185 coins + 5 notes and medals/stamps/souvenir cards.
1093. 2001 American Buffalo Silver Dollar 2 Coin Proof and Unc Sets(3). All nice in fresh original packaging of issue. 6 coins.
1094. 2005 U.S.M.C. Anniversary Silver Dollar Proof and Unc plus Coin & Stamp Set Unc(2); Justice John Marshall Silver Dollar Proof and Unc plus Coin & Chronicle Set Unc; 2006 Ben Franklin Silver Dollars – Scientist & Founding Father, both types Proof and Unc along with San Francisco Old Mint Silver Dollars Proof(5) and Unc(5) as well as U.S. Mint American Legacy Collection in Folio. All in fresh packaging with COA's, 17.78oz ASW. 33 coins + stamps.
1095. 2009 Abraham Lincoln Silver Dollars Proof(3) and Unc(3) along with 4 Coin 100th Anniversary Cent Proof Set(4); Louis Braille Silver Dollars Proof(3) and Unc(3) plus Educational Set Unc; 2010 Disabled Veterans Proof(2) and Unc(2) and Medal of Honor Proof and Unc Silver Dollars; 2012 Infantry Soldier/Dog Tag(2) and Star Spangled Banner Folio(2) Proof Silver Dollars as well as 2014 Baseball Hall of Fame Silver Dollars Proof and Unc(2), Clad Halves Proof(7) and Unc(7) plus Young Collector Unc(4). All nice in fresh packaging with COA's, 20.1oz ASW. 60 coins.
1096. **Commemorative Set, Silver Dollars, Clad Halves & More.** Features 2009 Lincoln Chronicles Proof Set; Unc Silver Dollars – 1991 Korea & USO, 1992 Columbus & White House, 1993 Bill of Rights, 1994 Capitol plus 1995 Gymnast & Blind Runner; Clad Half Dollars- 1992 Columbus Proof & Unc and 1995 Olympics Basketball and Baseball types in both Proof and Unc. Also, SBA Dollar, 1999 Clad Proof and **Canada**, Proof Silver Dollar, 1987. All in packaging of issue. 1 set + 16 coins.
1097. **Modern Commemorative Dollars & Halves Assortment.** Includes Silver Dollars: Congress, 1989, Proof; Madison, 1993, Unc; Civil War, 1995, Proof; Kennedy, 1998, Unc and Capitol, 2001, Unc along with Silver Half Dollars: Geo. Washington, 1982, Unc and Proof plus Clad Halves: SOL, 1986, Unc & Proof; Congress, 1989, Proof; Mt. Rushmore, 1991, Unc & Proof(2); Columbus, 1992, Unc; Olympics, 1992, Proof(2); Madison, 1993, Unc & Proof; WW2, 1993, Proof(2); World Cup, 1994, Unc & Proof; Olympic, 1995 Unc & Proof; Civil War, 1995, Unc & Proof(3); Olympics, Baseball, 1995, Unc and Swimming, 1996, Proof; Capitol, 2001, Proof; First Flight, 2003, Proof(2); Eagles, 2008, Proof and U.S. Army, 2011, Unc and Proof. Some toning or cloudy, viewing advised, no original packaging present. 36 coins.
1098. **Modern Commemorative Set Selection, 1986-2006.** Features 2 Coin Silver Dollar/Clad Half Dollar Proof Sets - 1986 SOL, 1992 Olympics & Columbus, 1993 Bill of Rights & World War II plus 1998 Robert F. Kennedy Silver Dollar 2 Coin Proof/Unc Set along with 1993 Thomas Jefferson, 2000 Millennium & 2006 Ben Franklin Coin and Currency Sets. All Brilliant Proof & Unc in packaging of issue. 9 sets.
1099. **Proof Commemorative Silver Dollar Ensemble, 1999-2006.** Includes 1999 Dolley Madison and Yellowstone National Park(2), 2000 Library of Congress and Leif Ericson, 2002 SLC Olympics and West Point, 2004 Lewis and Clark plus 2006 Ben Franklin – Founding Father types. Avg Brilliant Proof, cpl slightly hazy, all in packaging of issue. 9 coins.
1100. **Proof & Unc Modern Commemorative Silver Dollar Ensemble, 1987-2005.** Includes Proof Silver Dollars – 1987 Constitution, 1989 Congress, 1991 Mt. Rushmore & USO, 1996 Smithsonian, 1997 Botanic Garden, Jackie Robinson & Law Enforcement plus 1998 Robert F. Kennedy & Black Patriots as well as Unc Silver Dollars – 1991 Korean War, 1992 Olympic & 2005 Marine Corps issues. Avg Brilliant Proof and Unc in packaging of issue, the first minus outer box. 13 coins.
1101. **Proof & Unc Commemorative Silver Dollars and 2 Coin Sets Selection.** Includes Silver Dollars - 1988 Olympics, Proof and Unc along with Proof Silver Dollars-1990 Ike, 1991 Korea, 1991 USO and 1992 Columbus types as well as 2 Coin Sets featuring Silver Dollar & Clad Half Dollar-1991 Mt. Rushmore & 1992 Olympics, Proof and Unc Sets. All Choice Brilliant Proof in packaging of issue except as noted. 6 Singles + 3 Two Coin Sets.
1102. **Silver Proof Commemorative Dollar Selection, 2004-2007.** Includes 2004 Lewis & Clark and Thomas Edison, 2006 San Francisco Old Mint(2) along with 2007 Little Rock Desegregation and Jamestown 400th Anniversary(2) Avg Choice Brilliant Proof in packaging of issue. Also, later Unc and Proof Commemorative Silver Dollars, 2008-2013 - features 2008 Bald Eagle Unc and Proof, 2009 Lincoln Unc and Louis Braille Proof, 2011 Medal of Honor Unc and Proof & U.S. Army Proof(2) along with 2012 Star-Spangled Banner and Infantry Soldier as well as 2013 Girl Scouts Proofs. All Brilliant Unc and Cameo Proofs in packaging of issue with COA's. 18 coins.

Polish American Numismatic Society, Troy, Michigan
& Windsor Coin Club, Windsor, Ontario

12th International - Over 100 US & World Coin Dealer Tables

COIN SHOW

Sunday, February 21, 2021
10am - 4pm
FREE Admission

BUY - SELL - TRADE
COINS - CURRENCY
MEDALS - TOKENS
BOOKS - SUPPLIES
NO SALES TAX in Michigan
on Coins & Bullion

American Polish Cultural Center
2975 East Maple Rd., Troy, MI

Brett Irick: 313-207-3562
Les Rosik: 248-909-2670

www.pans-club.org
www.windsorcoinclub.com




Consigning is an easy process! You can ship your coins directly to us or visit our offices.

We also travel for larger collections and are more than happy to assist you in listing your material.

*P Denotes a lot that is Photographed,
Images may be enlarged or reduced in size*

Rare Original Coinage Plasters, Splasher and Photographic Relics

We are elated to bring the following two extraordinary lots to auction. These are important discovery pieces of the highest historical significance and rarity in the realm of coin design and Mint History, one of a kind and irreplaceable. According to the consignor, these items were once gifted by their creators to Victor DeMeo, who passed in 1947 and later inherited by William DeMeo. Victor was a sculpture artist and photographer who had a longtime professional relationship with James Earle Fraser. He frequently brought his son William to the Fraser NYC studio. There they met Charles Gibson, Charles Lindbergh, Ann Harding, Jack Johnston, Charles Atlas, Elihu Root & Edwin Robinson. Victor photographed James Earle Fraser and Laura Gardin Fraser in studio settings as well as his and Laura's sculptures and sculpture subjects. William served an apprentice with James Earle Fraser around 1932, then opened a NYC studio for 12 years before serving in World War II. William worked with many well known sculptors including Anthony DeFrancisci, Paulanship and others, making plaster pieces. These rare coinage related items being offered for auction today were handed down through the DeMeo family, gifted from the original artists and later acquired at the estate sales of relatives of William. The most solid information surrounding these relationships came from a loose-leaf book that William produced, a note book included in the group with hand written historical content and sketches dated 1935-36, as well as from letters and correspondence between James Earle Fraser and William DeMeo.



1103P. Likely Unique and Previously Unknown Original Obverse Plaster and Uniface Obverse Lead Splasher Die Trial Strike for The 1921 High Relief Peace Dollar. Features a white alabaster plaster model with yellow-ochre applied finish, 8 3/4" diameter, 1 1/4" thick, unsigned but design executed by Anthony DeFrancisci for use as the obverse of the 1921 replacement for the longstanding Morgan Silver Dollar. The design depicts a stunning art deco inspired portrait of Liberty with free flowing hair and a radiant tiara with LIBERTY at top and IN GOD WE TRUST divided at either side of the bust, date below. Overall EF, some minor chipping about the edge and mottled variation in the surface coloration due to age and some transient surface adhesion and deposits. Accompanied by an original lead composition Uniface Splasher Die Trial striking of the aforementioned design, 45mm in diameter overall and 5mm thick, weighing in at 77.1 grams. Heavily oxidized

with a thick, grayish-pewter colored patina the piece is otherwise EF to as struck - cpl light old marks likely part of the production process. The historic significance of this museum quality pair of United States Mint History relics cannot be overstated, a trophy acquisition for the Peace Dollar specialist or registry set collector, the likes of which will not present itself again. This lot contains both the Obverse Plaster and Uniface Die Trial together.



1104P. Likely Unique and Previously Unknown Original Unadopted Reverse Plaster and Original Studio Photograph of Laura Gardin Fraser Sculpting the Washington Quarter Design, c. 1931. Features a white alabaster plaster model with olive green applied finish, 11 1/2" diameter, 1 1/4" thick, with integral wire hangar as made on back, unsigned but design executed by Laura Gardin Fraser for use as the reverse of the 1932 George Washington Commemorative replacement for the Standing Liberty Quarter. The design depicts a magnificent Eagle in Heraldry with arrows and olive spray in talons, 13 stars above with UNITED STATES OF AMERICA at top while the Motto E PLURIBUS UNUM and QUARTER DOLLAR denomination reside below. Overall EF or better, some random minor chipping about the edge and to the finish, cpl trivial cracks in the surface coloration due

to age and some scattered areas of regional age toning and insignificant sediment/dust in devices. Accompanied by an original sepia tone 8"x10" Studio photographic portrait print of Laura Gardin Fraser at her easel, sculpting what appears to be the obverse for the aforementioned plaster. The image was lightly pierced at the top with a single pinhole for suspension, but otherwise perfect and accented by some peripheral silvering. The image conveys a rare window in time, viewing one of America's most noteworthy coin designers at work. Although this Quarter Dollar design was selected by the Council for Fine Arts as the rendering for coinage, the Treasury Secretary Andrew Mellon overruled the Committee and selected John Flanagan's design in its place. With a fast forward leap to commemorate the 200th Anniversary of George Washington's death, Laura's design finally came to numismatic fruition on the \$5 Gold Commemorative coinage of 1999. Once again as with the preceding lot, this discovery and offering of these amazing pieces, their historic nature and importance are utterly indescribable. An important opportunity for the advanced collector of U.S. Mint History, the Washington Quarter specialist or registry set collector, as well as mavens of Fraser's coinage and medallion art. This lot contains both the Reverse Quarter Dollar Plaster and original Studio Portrait together.

1105. No lot

Error Coinage



1106P. **Off-Center High Grade Early Buffalo Nickel, 1918.** PCGS AU55, struck 7% off-center, looks Unc and a minimum of 10% off center, a great certified Buffalo error worthy of resubmission!

1107. **Unusual 19th & 20th Century Error Coin Assortment.** Includes 3 Cents Nickel, 1866, clashed die & DDO/repunched motto and Seated Dime, 1853-O Arrows, unusual lamination “flap”, both EF, along with 20th Century Cents(10), Nickels(10), Dime and Quarters(3), various off-centers, clips, blank planchets, featuring a double clip Ike Dollar and a pair of fantasy Quarter errors. Balance of lot EF to Unc and mostly Unc. Viewing advised, an interesting group. 29 coins.

1108. **Modern Error Coinage Accumulation.** Features Double and Triple Dies, RPM's and Silver including Cents, 1956-D/D, FS-508; 1972, FS-101 and FS-108(2); Dimes, 1959-D/D, FS-504(6) and Halves, 1946, FS-801, aVF; 1964-D, FS-103(6), FS-105(2) and FS-108(3); 1973, FS-101 and 1974-D, FS-101(5), avg AU-Unc to BU except where noted. Also, Cent, 1992-D, Zinc core, minus outer copper layer, Ch. Unc; Wartime Nickel, 1945-P, struck on a tapered planchet, Unc; Type One Silver and Clad composition blank planchet Quarters, EF to Unc, It contact/abrasions and Washington Presidential Dollar, 2007, missing edge lettering, BU. Viewing advised. 33 coins.

Hawaiian Coinage & Tokens



1109P. Cent, 1847. 14 Berries. Sharpness of Choice EF, hints of verdigris in devices and some trace old tooling yet still presents quite well.



1110P. Dime, 1883. PCGS AU55, sharply appointed and accented by bold reflective luster with violet and golden peripheral toning.

1111. Dime, 1883. ANACS early small holder AU50 with blue and gold peripheral toning.

1112. Dime, Quarter and ½ Dollar, 1883. VF, marks and trace verdigris; toned EF and clnd VF-EF, bright respectively. 3 coins.

Be sure to place your bids early, tie bids are always awarded to the earliest Bidder!



1113P. Dollar, 1883. PCGS AU50 old green tag holder with desirable gunmetal toning and slate gray fields.



1114P. Dollar, 1883. EF, It toning, some tiny scattered contact marks in fields.



1115P. John T. Waterhouse Token, ND(1860). Honolulu, Hawaii. Pewter, 34mm. M.2TE-1. PCGS XF40, toned and appealing. Rare and seldom offered.



1116P. 12 ½ Cents Thomas H. Hobron Token, 1879. Handsome brown EF and quite pleasing. Very scarce.

Numismatic Auctions L.L.C.

**The Consignment Deadline
for our Spring Auction
is January 15, 2021**

Don't Miss Out!

Early Proof Sets



- 1117P. **Rare Original, Colorfully Toned 1883 Ten Piece Proof Cent, Cent to Morgan & Trade Dollar.** Features the Indian Cent, Three Cent Nickel, Shield, No Cents and With Cents Nickels, Seated Dime, Quarter and Half Dollar plus the Morgan and Trade Dollars. Beautiful original toned Brilliant Proof, well-matched hues of blue, gold and violet throughout and appealing beyond the technical grade from its many years residing in an old time Hollander coin display panel. Some typical minor inclusions or faint blemishes keep this from Gem, but an ultra-attractive set with terrific eye appeal and desirability! 10 coins.

Consigning is an easy process! You can ship your coins directly to us or visit our offices.

We also travel for larger collections and are more than happy to assist you in listing your material.

Modern Proof Sets

1118. **Large Modern Proof & Mint Set Accumulation w/Silver, c. 1956-2011.** Features Proof Sets – 1954 no box, 1956 & 1957(2 each), 1958 and 1960-1964(one each), toned to Brilliant Proof, no envelopes plus Silver Proof Sets – 1992, 2007 10pc & 14pc, 2008 and 2011 along with 1968 & 1970 as well as common Clad sets, mixed dates 1975-2004(22) w/cpl dups plus Mint Sets - 1958 Partial Set, 1960(2), 1966 SMS(3), 1967SMS(7), 1968(2) & 1969(7) as well as common Clad Sets, mixed dates, 1971-1986(49) some heavy duplication. Avg Proof and Unc, some toning or spots here and there or incomplete/missing packaging on a few. A comprehensive and useful grouping of sets. 39 Proof Sets + 71 Mint Sets in all.

1119. Silver Proof Sets, 1992-1996, 1997(2) and 1998 along with Clad Proof Sets, 1991-1998(one each). Avg Choice Brilliant Proof in packaging of issue. 16 sets.

Prestige Sets

1120. **Prestige Proof Set Collection.** Includes 1984(2), 1986-1995(one each year) and 1997, each featuring the Commemorative Proof Silver Dollars and Clad Proof Coinage of the year as issued in original, fresh boxes with COA's. A very nicely stored group with excellent packaging. 13 sets.

Miscellaneous & Group Lots

1121. **Colonial & Chinese Chopmarked Trade Dollar Pairing.** Nova Constellatio, 1783, Blunt Rays, Small U.S., sharpness of VG, old scs/tooling reverse and Trade Dollar, 1874-S, toned EF, cpl Chinese chops obv/rev and one interesting, large and apparently inscribed merchant mark; a few small patches of verdigris obverse. 2 coins.

1122. **Colonial, Odd Denomination & Type to Tokens Ensemble.** Includes Fugio Cent, 1787, States United, porous G-VG, trace graffiti obverse; Half Cent, 1833, EF, cpl rns; 2 Cents, 1864 LM, AU, both with blue iridescent toning plus 3 Cents Silver, 1853, VG/Fine and 3 Cents Nickel, 1865, EF-AU as well as type coins featuring Large Cents, 1836, 1847, 1849 and 1855, VG to VF-EF, one tooled, cpl with rbs; HTT Cent, 1837, HT-57, Choice VF along with common Civil War Tokens(3) and other similar arcade or trade issue, avg VF as well as Columbian Expo Half, 1892, VF and B.T.W. Half, 1946-D/D, toned Unc. 11 coins + 5 tokens.

1123. **19th Century Type Grouping.** Includes Large Cent, 1848 N-3, EF-AU, tiny old pin scs/digs obv; 2 Cents, 1865, Ch EF-AU and 1871, VG-Fine, old mks; 3 Cents Silver, 1852, AG-G and 1858, cld VF; 3 Cents Nickel, 1865, repunched legend, F-VF; 1870 and 1873, VF and Fine, lt scs; Dime, 1891-O, EF, edge mark rev; Quarter, 1855 Arrows, aEF, faint hairlines and 1888-S, toned Good; Half Dollar, 1834, cld VG; 1853 Arrows & Rays, brushed Choice EF, trace verdigris and Trade Dollar, 1878-S, bright ltly polished AU, some faint smoothing. 14 coins.

1124. **19th & 20th Century Type, Commems & Dollars Assortment.** Features Capped Bust Quarter, 1834, VF; Columbian Expo, 1892 and Stone Mountain Halves, 1925, both EF along with Morgan Dollar, 1898, Choice BU; 1921, Unc and mixed dates, 1886-1921(7), VF to AU as well as Peace Dollars(2), Fine and AU. 14 coins.

1125. **20th Century Silver & Clad Coinage Accumulation.** Features mixed type Silver Dimes(113), Quarters(34) and Halves(51) plus 40% Silver Halves(5) and a Cent to Half Dollar 1964-D type Set along with Nickel/Copper-Nickel 5 Cents(17), Dimes(50), Quarters(14), Halves(13), Ike(3) & SBA Dollars(7) as well as Presidential Dollars(15) and low grade Liberty(4), Buffalo(35) and Wartime Nickels. Balance of lot average circ to Unc, all common dates. 352 coins.

P Denotes a lot that is Photographed, Images may be enlarged or reduced in size

1126. **Better Cents to Silver Dollar Selection.** Includes Lincoln Cents, 1909-S over horizontal S, VF, cpl old pin scs, with ANACS papers as VF20/20; 1910 and 1934-D, both iridescent brown Unc; Buffalo Nickel, 1914, toned EF+; Barber Dimes, mixed dates, 1902-1916(11), avg Fine-VF; Franklin Halves, 1948, 1948-D(2) and 1949-S, Unc to Choice Unc and Morgan Dollar, 1904-O, unevenly toned Choice Unc. 20 coins.
1127. **Better Grade 20th Century Certified Minor Coinage.** Includes Cents, 1935-S, MS64RD; 1936-D, MS66RB; 1961-D, MS64RD; 1962-D, MS65RD; 1970-S Small Date PR67RD – all PCGS certified plus Dimes, 1941-S & 1948-S, PCGS MS66FB and MS67 along with Quarters, 1956, Type B Reverse FS-901, ANACS MS64, looks blast white 65 and 1964-D, NGC MS65, colorful as well as a raw 1964-D, RPM, Ch Unc and a lesser grade Upper Bank of Canada ½ Penny Token, 1857. 11 coins.
1128. **Capped Bust Type Trio.** Features Half Dime, 1831, crusty original Choice EF; Quarter, 1821, gunmetal toned Choice VF, faint old pin scs reverse and Half Dollar, 1831, toned VF, graffiti. 3 coins.
1129. **Certified Capped Bust & Seated Liberty Quartet.** Features Dime, 1834 Large 4, NGC F12; Half Dollar, 1838 Reeded Edge, NGC VF35; 1853-O Arrows & Rays, PCGS VF30 and 1855-O Arrows, ANACS EF40. All with original gray to deep gray toning. 4 coins.
1130. **Certified Toner Type Quintet of Gems.** Includes Half Dollars, 1945-S, PCGS MS65 and 1958, PCGS MS66. Also, Quarters, 1942-S, NGC MS64; 1950-S, PCGS MS65 and 1952-S, NGC MS66. All with original toning and color. 5 coins.
1131. **Interesting Type Quartet Ensemble.** Includes Nickel, 1883 NC, golden toned Unc; Dime, 1914, lustrous Unc, deep violet and gold freckled toning; Quarter, 1903, lustrous AU, color at rims and Stone Mountain Memorial Half Dollar, 1925, sunset target toned AU-Unc, lt rub but very handsome color. 4 coins.
1132. **Large 20th Century Accumulation – Cents to Dollars.** Features Cents – 1943-D PCGS MS66 and Rolls, 1946-S(2) RB to Brown Unc along with mixed Wheat/Memorial Rolls(50+/-) avg circ to Unc as well as 2003(97) and 2009(16) Rolls, Mint wrapped red BU; Cents in mixed partial sets(388) and 2x2's(79); Nickels, mixed mostly Jeffersons in partial sets, 2x2's and rolls or loose(456); Washington Quarters – mixed date Silvers in Proof(7), Unc(10) and circ (5) plus Clads(71); J.F.K. Halves – 90%(7), 40%(12) and Clad(12) along with Geo. Washington Halves, 1982(2), Proof; Ike Dollars – 40%(7) & Clad(22); SBA(10) & Sac(11) Dollars, Clad Dimes(3) and more. Some slightly better dates or grades present, S-Mint Proofs, etc. Balance of lot circ to Cameo Proof. Viewing advised. Approx. 9352 coins, extra handling charges apply if shipped.
1133. **Modern 20th Century Slabbed Minor Type Selection.** Includes Cent, 1995 Double Die, PCGS OGH MS66RD CAC and MS65RD along with PCI green tag MS66 Red as well as 1995-D, PCGS MS67RD. Also, Bicentennial Silver Quarter, 1976-S, PCGS Gem Proof w/designer Jack L. Ahr Autograph; South Dakota Clad Quarter, 2006-S, PCGS PR69DCAM and S.B.A. Dollar, 1979-S Clear S Type 2, Cameo Proof, faint haze. 7 coins.
1134. **Numismatic Coin & Currency, Reference Books and Historical DVD Assortment.** Includes Walter Breen's Complete Encyclopedia of U.S. and Colonial Coins, inscribed by the author; A California Gold Rush History by Q. David Bowers; Indiana Obsolete Notes & Scrip by Wolka/Vorhies & Schramm; United States Large Size National Bank Notes by Peter Huntoon, author signed and National Bank Notes, Sixth Edition by Don C. Kelly – spiral bound, all others in lot hardbound. Also, Historical & Reference DVD's relating to coins, WWII and more(12). A nice ensemble of working references and some entertaining digital media as well. 5 books + 12 DVD's.
1135. **Odd Denomination & Silver Type Coinage Accumulation.** Includes 2 Cents, 1865, retoned EF, spots; 3 Cents Silver, 1853, Fine; 1858, colorful VF and 1862, Ch. VF-EF along with 3 Cents Nickel, 1881, nice AU. Also, Half Dimes, 1800, Poor, multiple scs; 1835, colorful retoned VF+; 1837 No Stars, bent VG; 1853 Arrows, 1857 and 1871, aVF to VF along with Dimes, 1898, EF-AU; 1943 & 1946, both AU; Quarters, 1903, ltly cld aEF, retoning; 1917 Type One, EF; 1925, hairlined EF and 1958, Unc; Half Dollars, 1937, EF-AU, 1948-D & 1964, Unc; 1965, AU and Ike Dollar, 1971-S, AU-Unc. 23 coins.
1136. **Partial U.S. & Canadian Whitman Folder Cent & Nickel Sets, Proof Sets, Silver & More.** Includes partial Lincoln Cent Collections featuring mostly common dates and mints with duplication from 1909-1941(237), 1941-1974(411) and 1975 forward(116) in 26 folders, a few unused with no contents plus Indian Cent, 1904; Canadian Small Cents, 1920-1971(56); Canadian Nickels, 1922-1960(44) and 1961 forward(21), avg circ to Unc. Also, common date Morgan and Peace(3) Dollars, VF-EF and SBA Dollar, 1979, Unc along with Proof Silver Eagles, 1990(3); Proof Sets 1982 & 1984 as well as George Washington Half Dollar, 1982, Proof – all in boxes of issue plus Silver Casino Token, Canadian Dimes(3), Quarters(2) and Dollar, avg circ; Chelsea, MI Pontiac Dealership Copper 50th Anniversary Tokens, 1976(2), other tokens(3) and Canadian Bronze Dollars(2), mostly EF to Unc. Viewing advised. 919 pcs.
1137. **Seated Liberty Coinage Selection.** Includes Dimes, 1853 Arrows, Ch. VF, toned; 1873 No Arrows, ltly cld VF; 1875-CC, VG & 1891(2), toned VF+ and cld EF as well as Quarters, 1853 Arrows & Rays, cld VF-EF, fine porosity and 1859, toned sharp EF. Also, Trade Dollar/Box Dollar, 1877-S, VF-EF, some mild impairments and carbon deposits in devices. 8 coins.
1138. **Type Selection Featuring Silver & More.** Includes Nickels – Liberty(11), Buffalo(29), Jefferson Wartime(8) and other (29); Dimes – Barber(36), Mercury(59) and Silver Roosevelts(11); Quarters – Barber(21), Standing Liberty(8) plus Washington Silver(48) and Franklin Half Dollars(28) along with a Peace Dollar Cull. Balance of lot avg circ to BU, some problems, viewing advised, some useful collector coins present for retail. 289 coins.
1139. **Vintage Original 1948 Redbook and 1947 Reissue Pairing.** Features an Original Vintage 1948 "Redbook" – A Guide Book of United States Coins by R.S. Yeoman in handsome Choice VF-EF condition with only a couple slightly bumped corners, nice clean internal pages and no writing or notation, accompanied by a Whitman Publishing Reissue of the 1947 Edition in Near Mint with stickers and notation on dust jacket only, otherwise nice. These are a neat read as a wonderful trip down memory lane on pricing! A great pair of nostalgic volumes for the U.S. collector. 2 books.

Paper Money Continental Currency

1140. \$2/3, Continental Congress Issue, February 17, 1776. CC-22. The famous Fugio motif Hall and Sellers note inspired by founding father Benjamin Franklin. Appearance of VF-EF, pinned long ago at each corner, faded signature and faint dampstain yet always popular. Accompanied by a clipped historical article, great companion piece to the following lot.

NUMISMATIC AUCTIONS LLC
PO BOX 22026
LANSING, MI 48909
517-394-4443



- 1141P. **William Franklin, Son of Ben Franklin Signed Land Document As The Final Colonial Governor of the Colonial Province of New Jersey.** Two pages on linen, 15½" x 19½" hence separately matted and framed to the overall size of 23½" x 28½" in two frames, signed and dated June 20, 1765. William Franklin was the illegitimate son of Benjamin Franklin, later becoming a British sympathizer and fiercely loyal to the throne. William was present and assisted his father in the famous kite and key experiment and although often portrayed as a young boy in illustrations of such, he was actually a grown man at the time of 21 years! William was later exiled to England for his loyalist activity in the midst of the American Revolution. This document details the procurement of funding and the acquisition of land to improve the roads of Colonial New Jersey. Overall VF, some seps and toning at folds, chipping and small voids along outer periphery of the document not detracting, the signature being bold and vivid. A wonderful opportunity to obtain such a rare autograph and important piece of New Jersey and Colonial history by a character from such a scandalous bloodline. (\$1000-1500)

Colonial Currency – State Issues

1142. **New Jersey.** 18d, March 25, 1776. NJ-176. PCGS EF45 PPQ. Terrific impression and nice strong signatures.



- 1143P. **Rhode Island.** 10 Shillings, May 1786. RI-297. PCGS EF45, a charming piece flaunting the nautical themed seal.
1144. **Colonial & Continental Currency Assortment.** Includes **Colonial Currency – Connecticut**, 9 Pence, June 1, 1780, CT-226, hole cancelled VF-EF; **Maryland**, \$8, March 1, 1770, MD-59, Fine, multiple worm holes; **Massachusetts**, \$8, May 5, 1780, MA-284, F-VF, various repairs & chipping; **Pennsylvania**, 10 Shillings, Oct. 1, 1773, PA-167, Fine, bold sigs, hard central fold, spots on verso; 6 Pence, April 25, 1776, PA-199, VG, mounts and notation on back, folds & splits; 4 Pence, April 10, 1777, PA-210, appearance of VF/Fine, bends and near splits, trace adhesive and 20 Shillings, April 10, 1777, PA-222a, faded G-VG, small splits and seps, cpl internal – quarter folded. Also, **Continental Currency**, \$3, May 10, 1775, CC-3, Fair/AG, rough edges and \$6, November 29, 1775, CC-16, VG/G, rounded corners, pinned and old repairs. A useful entry level group of collector notes in spite of the typical impairments. 9 notes.

*P Denotes a lot that is Photographed,
Images may be enlarged or reduced in size*

Encased Postage Currency



- 1145P. Ayer's Sarsaparilla, Three Cents, HB-30, About VF-VF, cracked mica but stamp color is vivid despite some slight wrinkling plus Gage Brother & Drake(Tremont House), Ten Cents, HB-123, Bold VF, slight craze to mica, nice stamp color with a mild old dampstain. 2 pieces.



- 1146P. F. Buhl & Company, Detroit, MI, Ten Cents, HB-70, EF or nearly so, lovely deep green stamp with some trivial mica impairments along with Gage Brother & Drake(Tremont House), 5 Cents, HB-122, Fine+ outer case, yet mica voids at center exposing stamp, which is slightly darkened. 2 pieces.

Fractional Currency

1147. 3 Cents, 3rd Issue, Fr. 1226, vertical pair, EF-AU, tiny pinhole at top, speckles; 5 Cents, First Issue, Fr. 1229, AU, unevenly trimmed perfs, otherwise nice and Fr. 1230(2), VG, pinholes and Good along with Second Issue, Fr. 1232(2), EF-AU border toning and F-VF, uneven edges plus Fr. 1233, vertical pair, EF, toning and fold between notes, one corner nibbed and Third Issue, Fr. 1238, VG, chipped edge and a few tiny seps. 10 notes.
1148. 10 Cents, First Issue, Fr. 1241, Choice VF-EF, cpl lt smudges, a few incomplete perfs and Fr. 1242 vertical pair, VF, bends, tiny closed tear at bottom along with Second Issue, Fr. 1245, vertical quartet, ltly toned EF, bends between notes, cpl edge chips as well as other singles(3) avg Fine-VF, faulty, one with adhesive remains verso. 10 notes.
1149. 10 and 50 Cents, First Issue, Fr. 1242 and 1312; 3, 5 and 25 Cents, Second Issue, Fr. 1226, 1232 and 1283; 10 and 25 Cents, Fourth Issue, Fr. 1257 and 1303 plus 10 and 25 Cents, Fr. 1266 and 1308. Fine to AU-Unc, some minor faults. Viewing advised. 9 notes.
1150. 10 Cents, Fifth Issue, Fr. 1264, EF-AU, tiny staple piercing and Fr. 1265(3), avg AU to AU-Unc, one with border toning, another ltly smudged. Also, lesser grade circulated 10 Cents, Fourth and Fifth Issues, Fr. 1258(2), faulty VG and Good, seps along with Fr. 1265(2), VG and Fr. 1266(3), G-VG as well as others, avg Poor-Fair(2), most faulty. 13 notes.
1151. 25 Cents, First Issue, Fr. 1280, PCGS Choice About New 55 and 50 Cents, First Issue, Fr. 1312, PMG Choice Unc 64. Nice pair. 2 notes.
1152. 25 Cents, First Issue, Fr. 1281. Vertical quartet, VF, bends between notes, cpl pinholes plus other individual notes(3), avg F-VF. 7 notes.
1153. 25 Cents, Second Issue, Fr. 1284, VF-EF and Fr. 1286 vertical pair, VG, small faults; Fourth Issue, Fr. 1302 and Fr. 1307(2), all faulty avg circ to Good along with Fifth Issue, Fr. 1308, AU-Unc and Fr. 1309(2), VF and AG-G, both with small faults plus 50 Cents, First Issue, Fr. 1312, fresh AU-Unc, cpl tiny pinholes; Second Issue, Fr. 1318, AU-Unc, cpl trace thins at corners verso and Fourth Issue, Fr. 1376, Good, honest wear. 12 notes.

1154. 50 Cents, Third Issue, Fr. 1339, VF-EF, cpl mounts/tiny thins; Fourth Issue, Fr. 1374, Fine-VF and Fr. 1376, VF, irregular edges and tiny split along with Fr. 1379, nice AU-Unc, plus Fifth Issue, Fr. 1380, faulty Fine, pinholes. An interesting group of 50c denoms. 5 notes.
1155. Specimen 10 Cent Note, Obverse with Autographed Signatures of Colby and Spinner. Fr. 1253-SP. Toned AU, cpl faint bends, tiny chip at left end and possible mounts at corners verso. The rare hand-signed, wide margin variety. Seldom offered and still very presentable.
1156. Specimen 15 Cent Note, Obverse with Printed Signatures of Colby and Spinner. Fr. 1272-SP. aEF narrow margin variant of this scarce issue, some lt toning.
1157. Specimen Reverse Trio. Features Uniface Reverse Specimen impressions, all in the narrow margin formats. Includes 3 Cents, Fr. 1227-SP; 10 Cents, Fr. 1254-SP and 25 Cent, Fr. 1294-SP. Avg EF with small faults and lt toning, the second without "SPECIMEN" on verso. Inspection recommended. 3 notes.
1158. Specimen Reverse Quintet. Features Uniface Reverse impressions, all Third Issue narrow margin format varieties. Includes 10 Cents, Fr. 1255, AU50 and 25 Cents, Fr. 1294(2), AU50 and VF30 – all Green Back issues plus 25 Cents, Fr. 1291(2), AU58 and AU58 Red Back types. All PMG graded, all but the nicest Red Back example with comments as previous mounts noted verso, one with missing corner but all pleasing in fresh colors. 5 notes.

Confederate States of America Currency

1159. 50 Cents, 1863 and 1864 along with a Feb. 17, 1864 type collection including: \$1, \$2, \$5(2), \$10, \$20(2), \$50 and \$100 as well as a \$30 C.S.A. Bond Coupon and an earlier \$100, Nov. 24, 1862. VF to AU-Unc, avg EF or so plus a couple modern restrike tokens, Unc. 13 notes + 2 tokens.
1160. \$1, June 2, 1862; \$20, \$50 and \$100, all Sept. 2, 1861, the first and last appear to be contemporary counterfeits along with \$5, \$10, \$20 and \$50 notes of Feb. 17, 1864. Avg VG to Fine but with edge chipping, splits/seps and cpl with voids at ends or corners – still an interesting and presentable group of inexpensive collector grade C.S.A. currency. Also, better grade \$50, February 17, 1864(2), one vivid EF-AU, cpl small ink smudges on back and the second faded VF-EF, unevenly cut top at left end along with \$100, October 2, 1862, VF-EF as well as a novelty/promotional \$10, Feb. 17, 1864 pair with poems entitled "Confederate States Money" and "Reply" glued on verso, otherwise both fresh VF-EF with nice color. 13 notes.
1161. \$10, December 2, 1862(2); April 6, 1863 and February 17, 1864 plus \$20, December 2, 1862 and February 17, 1864(4). Avg Fine to VF-EF, cpl with minor faults, others problem free and many quite pleasing. Inspection recommended. Nice grouping of common types and varieties. 9 notes.
1162. \$100, June 17, 1862 Sequential Serial Numbered Pair with red and black interest stamps and signed by John Boston verso. Avg AU, slightly uneven bottom margins as made. A really neat pair! 2 notes.



- 1163P. \$500, Feb. 17, 1864. Key high denomination issue. Pleasing AU-Unc, one faint corner crease at lower rt from Choice.

1164. **Unusual C.S.A. Facsimile Advertising Note Ensemble.** Features \$1 type of 1861 – Michigan State Fair, Sept 18-27, 1911; \$10 types of 1861(2) – C.B. Jack of Ionia, MI and Queensboro Business Institute of Brooklyn, NY; \$10 type of 1864 – Detroit Free Press Cigar – Thomas Moore, Ashland, OH plus more modern c.1960's era "onion skin paper" \$1000 types of 1861(2) – Citizens Federal Savings Bank of Algonac, MI. Fine to EF, cpl with typical faults, one with faded back. Also, other assorted C.S.A. copies/facsimiles without ad backs - \$1, \$5, \$10(2), \$20, \$50 and \$100(2), mostly types of 1864, VF to AU-Unc. An unusual ensemble worthy of inspection. 14 notes.

Obsolete Currency & Southern States Issues

Alabama

1165. **Montgomery.** State of Alabama, \$50, Jan. 1, 1864, Fine-VF, small blue notation on face with hinge rem verso along with faint counter signature along with 50 Cents and \$1(2), January 1, 1863 plus \$5, January 1, 1864, avg faulty VG yet still presentable. Also, **Arkansas, Little Rock,** Arkansas Treasury Warrant, \$10, April 11, 1862, Cr. 54; May 30, 1864, Cr. 56B and May 8, 1863, Cr. 58A. VF, aVF, hinge rems and cpl pinholes and VG, cpl chips respectively plus **Tennessee, Maryville,** Blount County Script, \$2, Dec. 16, 1862, appearance of VF-EF, some tiny hairline seps and bends but presents well and **Nashville,** Bank of Tennessee, 10 Cents, Dec. 1, 1861, backed/repaid AG/Fair. 10 notes. (\$200-300)

Connecticut

1166. **East Haddam.** Bank of New England at Goodspeed's Landing, \$1-\$1-\$2-\$3, ND 18__, Uncut Sheet of Unsigned Remainders, ABNC-NY, X7, Unc, some edge toning and ink smudges in selvage. Also, **New Haven,** \$5-\$5-\$5-\$10, ND 18__, Uncut Sheet of Unsigned Remainders, TCC and ABNC Monogram, X5, ltly toned Unc, cpl corner/edge bumps. Additionally, **Maine, Calais,** Washington County Bank, \$1, \$5 and \$10, all different dates 1836-1839, G4, 16 and 28 respectively, avg nice VF-EF to EF, the first toned with notation verso and **Lewiston,** D. Tarboff, 5c Green, Feb. 2, 1863 issued note and 10c Black Unissued Remainder, avg VG-Fine, minor foxing. 13 notes. (\$250-300)

Florida

1167. **Tallahassee.** Tallahassee Rail Road Company. \$1-\$1-\$2-\$3, ND 18__, Uncut and Unsigned Sheet of Remainders by ABNC on cream colored paper minus the registration and cut markings as well as lacking the "Tallahassee R.R. Co." marking in selvage regions. AU-Unc, lt toning, slight ruffle and bends in selvage, otherwise nice along with a second similar sheet in lesser grade with cpl short tears into selvage at edge and old tape removal/thins on verso near top and bottom notes only, still very presentable from the face of the sheet. 8 notes. (\$200-300)

Georgia

1168. **Augusta.** Augusta Insurance & Banking Co., \$1, March 18, 1862, Fine; Bank of Augusta, \$1 and \$2, Unissued Remainders, 18__, ltly toned AU-Unc & Mechanics Bank, \$2 and \$5, c.1858-1860's, VG, pinholes and repaired aVG, voids at border along with Bank of Augusta, \$4-\$4-\$4-\$4 Uncut Unissued Sheet of Remainders, 18__ with 25c-50c-10c-25c-50c-10c-75c-50c-5c, Jan. 1, 1863 Unissued Sheet printed verso, VF-EF, horizontal bends between \$4 notes, a few tiny pinholes in selvage – one irregular margin. Also, **Milledgeville,** State of Georgia, \$5 and \$10, January 15, 1862 plus \$5, \$10 and \$20, April 6, 1864. Avg VF to EF, cpl with old dampstains, pencil notation verso or ruffling, still a pleasing ensemble of related issues as well as **Savannah,** Bank of Commerce, \$1, April 1, 1864, VG, old repair/worm holes and Merchants and Planters Bank, \$5 and \$10, c.1856-1857, avg VG, minor faults, the first with ad rubber stamp verso. A highly diverse Georgia grouping. 23 notes. (\$250-300)

Visit our website at

www.numismaticauctionsllc.com

Illinois

1169. **Chicago**, Branch State Bank at Chicago, \$100, Aug. 1, 1839, fresh AU, It cut cancels and **Lockport**, State Bank of Illinois, IL & MI Canal Fund \$5, Sept. 10, 1840, aVF, countersigned on back along with \$1-\$1-\$1-\$1 Uncut Unissued Sheet of Reminders with engraved Bank President signatures, 18__ EF-AU with old folds at or between the notes. 6 notes. (\$200-250)

Indiana

1170. **Indiana Obsolete Banknote Assortment & More**. Includes **Columbus**, Madison & Indianapolis R.R. Co., \$5, Oct. 18, 1842, spindled aVF; **Gosport**, Citizens Bank, \$2 & \$5, July 1, 1857, avg VF the second toned with foxing; **Greencastle**, Exchange Bank, \$1, May 10, 1854, F-VF severe ink burn and **Indianapolis**, State Bank of Indiana, Madison Branch, \$5, July 1, 1841, VF, cpl thins from old mounts plus an 1870's **South Bend**, Bank Check with Revenue Stamp. Also, **National Bank Note**, Small Size \$5, 1929 T-2, **St. Louis, MO** – The Boatman's National Bank, Ch. #12916, Fr. 1800, VF-EF and attractive. 7 pieces. (\$200-300)

Kentucky

1171. **Frankfort**. Farmers Bank of Kentucky. \$5-\$5-\$5-\$5 Uncut, Undated Sheet of Reminders with signatures, ND 18__, as G10a yet in sheet form, toned VF-EF, some It folds and chipping at selvage. Also, **Louisiana, New Orleans**, Canal Bank, \$20-\$20-\$20-\$20 Uncut Unissued Remainder Sheet, 18__, toned VF, folds/chipping at borders, tape mount rems at corners verso and **Baton Rouge**, State of Louisiana. \$1-\$2-\$3-\$1-\$2-\$3 Uncut, Issued Sheet, Feb. 24, 1862 printed on back of **MS, Holley Springs**, Exchange Office \$5-\$5-\$10-\$20 Uncut Unissued Sheet of Reminders 18__, VF, slight dampstain; seps & pinholes, chips along with **Louisiana Baby Bonds** \$5-\$5-\$5-\$5 Uncut Sheet, Series 1875, nice EF-AU. 18 notes. (\$250-300)

A Landmark Offering of Michigan Obsolete Banknotes – Predominantly from the Jack Lavis Collection

This group features over a hundred lots representing the Wildcat Broken Bank Note Banking Era of Michigan.

An impressive array of towns seldom offered at auction – an outstanding opportunity for the specialist.

Michigan

1172. **Adrian. Adrian Insurance Company**. \$3, ND, signed and numbered EF, ruffled corner and tiny chip top edge, accompanied by a separate Proof printing of just the portrait vignette, EF, *Ex: John Carter Brown Collection with tag, c. 1976* plus **Erie & Kalamazoo Railroad Bank**, \$5, August 1, 1853 and **Ann Arbor**' Bank of Washtenaw, \$1, May 1, 1854, both Fine-VF along with **Eagle River**, Bay State Mining Co., \$5, June 20, 1868, Fine, It stains/pinholes and **Lincoln Park**, Depression Scrip \$5, 1934, punch cancelled AU-Unc. Neat lot. 5 notes + printed portrait engraving. (\$150-200)

1173. -. **Fantastic Adrian Insurance Company Singles & Uncut Sheet Archive**. \$3, Jan.14, 1852, VG, redemption stamps, ink burn voids and pen notation verso along with a second example, AU-Unc, signed yet undated Remainder, trace mounts at corners on back only. Also, \$1 vertical Uncut Pair, signed but undated Reminders, Choice EF-AU, old It horizontal folds at center and similar individual Remainder \$1 and \$2 notes, both avg AU-Unc, the first ltly toned plus \$1-\$1-\$2-\$3, Jan. 14, 1853 Uncut Sheet of Reminders, EF-AU, faint old bends between notes and one faded dampstain on the rt end of the \$2 note and a second similar \$1-\$1-\$2-\$3, signed yet Undated Uncut Sheet of Reminders, VF-EF, faint bends, a few small ink burns at sigs & tone spots, a partial hinge verso. All Haxby unlisted and a great historical Adrian Insurance Company ensemble. 14 notes total. (\$300-400)

1174. -. **Bank of Adrian**. MI-5. \$1(2) and \$2, all Sept. 10, 1838, G2 and G4 respectively, the first two G-VG by wear but faulty with old small splits, voids and repairs yet quite presentable, the deuce being a nice Fine-VF with fresh paper, sporting the iconic Native American and Beaver vignette designs - all with redemption stamps. Also, \$1 and \$4, Sept. 10, 1838, G2a and G8a examples, avg VG-Fine with slight discoloration and minor faults/soiling as well as \$2, May 10, 1838, G4a, G-VG, irregular borders and old repairs verso, the latter trio being "Michigan Safety Fund" notes, the \$4 being always popular and in demand. Viewing advised. 6 notes. (\$200-300)

1175. - -. \$3, Sept.10, 1838(2), G6; Nov.1, 1841 and an Undated Unissued Remainder, both G6a, the second with faint unofficial penciled in signatures, avg VG to Fine, cpl with redemption stamps or penned endorsement verso, a few small faults or early repairs/seps. Also, \$4, Sept. 10, 1838. G8, toned Fine or nearly so, some deeper foxing in areas, endorsed on back by Michigan Pioneer & Political icon Alpheus Felch, scarce. Neat odd denomination quintet. 5 notes. (\$300-400)



1176P. - -. \$4, Sept. 10, 1838. G8. Handsome and bright aVF-VF issued specimen with the historic endorsement of Alpheus Felch who would later serve as Michigan's Governor as well as a Senator on verso. Great example of this tough quad denom in better grade. (\$200+)

1177. -. **Erie and Kalamazoo Railroad Bank – Early Issues**. MI-10. 50 Cents, Mar. 11, 1841, Choice VF-EF and \$1.50, Haxby Unlisted, signed yet Undated Remainder, nice AU-Unc, trace hinges verso; \$1, Oct. 1, 1840, G4, Fine+ or better, old ruffling but attractive and sharp plus \$2, July 4, 1838, G6, once PMG Fine 12, previously mounted, scarce and listed by Haxby as a Proof only issue, neat. Also, **Toledo(post MI/OH Border War dispute)** issues of the same bank, \$1, Jan 18, 1841, bright VF-EF, minor flaws along with \$1.25, with spurious or incorrect signatures and date of May 1861, some 20 years after issue date, VG-Fine. Interesting sextet. 6 notes. (\$200-300)

1178. - -. \$3, July 4, 1838, G10, listed as a Proof only in Haxby, this being an unusual issued example with full date and signatures, faded Good, some chipping and typical faults for the grade and a second example dated Oct. 1, 1840, VG+ overall appearance but scattered tiny wormholes and a few darker areas of foxing. An early and rare pair of threes in spite of the impaired conditional aspects. 2 notes. (\$200-400)

1179. - -. **Revived Bank Issues**. \$1, \$2 and \$5(2), Aug. 1, 1853 plus \$3, June 1, 1853 and July 4, 1853, both G29a, avg VG, some random pinholes and tiny chips/seps along with June 1, 1854 and Aug. 1, 1854 notes, as well as another Unissued Remainder example – all G30b, VF, AU and EF-AU respectively, the first with small chip left end, the last with trace mounts verso - still a presentable quintet of \$3 denoms, always popular as such as well as \$5, April 29, 1853 and \$10, Jan. 2, 1854, avg VG-Fine. Neat lot virtually different varieties, nearly all issued notes displaying the typical faults – a few being nicer. 11 notes. (\$200-300)

1180. **Allegan. The Bank of Allegan**, MI-15, \$3, Dec. 30, 1837, G6, VG-Fine, a few pinholes and It foxing along with **Kalamazoo River Bank**, MI-20, \$3, c.1838, G6, undated remainder w/faded sigs, appearance of bold VG, repairs and seps. A scarce pair of early threes on a tougher bank & town. 2 notes. (\$150-200)



- 1181P. **Ann Arbor. Bank of Ann Arbor.** MI-25. \$3, June 28, 1837. G12. Handsome and solid VG-Fine, some random tiny microscopic pinholes. A very elusive & early dated odd denomination on this "A-Squared" bank from the same year as Michigan became a state! (\$250-300)
1182. --. \$3, Jan. 4, 1838. G12. Appearance of EF, lt dampstain at right end and some faint toning/foxing overall. A difficult note in this grade in spite of the minor impairments. (\$200+)
1183. -. **Exchange Bank.** MI-35. \$1, \$3(2) and \$5, all Unsigned Remainers, G2, 4 and 6 respectively. Ltly toned AU-Unc, the second & third examples Unc, minor natural paper ruffle/wrinkle and the last Ch.EF-AU, lt bends. 4 notes. (\$200-300)
1184. -. **Government Stock Bank.** MI-40. \$1, \$1 3/4, \$2 and \$5, mixed dates, 1850-1853. G2; G6a, 8 and 10a respectively. Avg toned VG to VF, avg VG, the first three with small hinge rems or tiny chips. A scarce run, highlighted by the neat \$1.75 denom. Also, **Millers Bank of Washtenaw**, MI-45, \$1, \$2, \$3 and \$5, c. 1837-39 Undated Remainder single notes, G2, 4, 6 and 8, avg unevenly toned Unc, the \$3 with repair and one sig with ink burn. Also, \$1-\$2-\$3-\$5 partly signed/Undated Uncut Sheet, GX1, AU-Unc, old repaired tear at top and five internal repaired cut-cancels. 8 notes + 4 note sheet. (\$200-300)
1185. -. **Bank of Washtenaw, Early Issue.** MI-50. \$1(2), \$2, \$5 and \$10, mixed dates 1834-1835, one possibly 1837, G2, 4, 6, 14 and 16, avg EF-AU to AU-Unc, the second example VG, a few with trace hinge rems or minor flaws but mostly nice along with \$3, Dec. 9, 1835, G10 and G12 (one each), both ltly toned AU-Unc, trace hinge rems verso, a couple nice Ann Arbor threes. 7 notes. (\$200-300)



- 1186P. --. **Neat 8 Dollar Ann Arbor Note!** \$8, Dec. 9, 1835. G30. Appearance of VF-EF, cpl trace mounts and possible old repairs verso, areas of uneven toning/soiling. A very rare denomination and exceptionally tough as an issued note since these were made payable in New York. Very elusive! (\$300-400)
1187. --. **Revived Bank Issue.** \$1(3), \$2(2) and \$5(2), all May 1, 1854. G40a(2), 40b, 42a, 42b, 44b, 44d. VG-Fine to AU, some nice EF to AU. Nice variety present. 7 notes. (\$150-200)
1188. **Auburn. Bank of Auburn – Clinton Salt Works.** As MI-55 but Haxby Unlisted. \$1.50, May 1, 1838, VF-EF, ink burn through at left signature, redemption stamp and couple tone spots. Also, \$1- \$1.50- \$3- \$10 Unsigned/Uncut Remainder Sheet, VF, once wrinkled overall, cpl dampstains and internal splits. Scarce issues. 5 notes. (\$150-200)

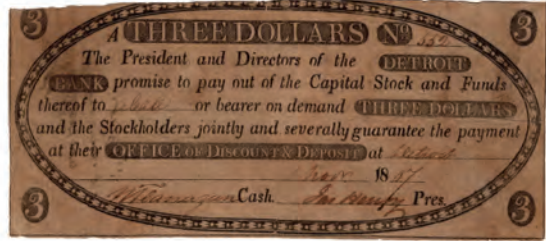
1189. **Barry. The Farmers Bank of Sandstone.** MI-60. \$1, \$3, \$5 and \$10, Jan. 8, 1838. G2, 6, 8 and 10. Avg Fine to VF, cpl ink burn regions at signatures or tiny inclusions, otherwise nice. 4 notes. (\$150-200)
1190. **Battle Creek. Bank of Battle Creek.** MI-65, \$1 and \$2 issued notes c. 1838-1840, G2 and 4 plus \$3(2) and \$5 Unissued Remainers, G6 and 8 respectively. The first two issued examples faulty Good and VG, pinholes/chipping while the remainders grade VF- EF to toned AU, old hinge rems/thins plus \$1-\$1-\$2-\$3 Undated Uncut Remainder Sheet, c.1838-1840, X1, Fine-VF, old vertical bend and lt folds & wrinkling, rough margin at bottom rt into outer border of the last note in the sheet. Also, **Branch, Branch County Bank**, MI-80, \$3, c.1837-1838, G6 Unissued Remainder, AU, uneven bottom margin and cpl old dampstains. 10 notes. (\$300-400)
1191. **Belvedere. Bank of Lake St. Clair.** MI-70. \$1, c.1838 yet this example with unofficial and/or spurious 1847 endorsement. G2. Crudely repaired Fair/AG, voids/faults and tape rems yet an exceedingly rare example, missing from most collections. (\$200+)
1192. **Berrien. Berrien County Bank**, MI-75, \$3, Feby. 1, 1838 issued note and an unissued remainder example, both G6, the first example G-VG appearance yet many hinges & crude repairs/small voids & pinholes, while the second is bright AU, cpl tiny faults and impressive. Also, **Branch, Branch County Bank**, MI-80, \$3, c.1837-38 Unused remainder, G6, unevenly toned, AU and **Coldwater, Bank of Cold-Water**, MI-110, \$3, Nov. 6, 1837, G6, toned VG-Fine, pinholes at corners, some small splits/seps and edge chips. A scarce quartet of threes, the Coldwater rarely offered. 4 notes. (\$200-300)
1193. **Brest. Bank of Brest, Safety Fund.** MI-85. \$1, \$2(2), \$3 and \$5(2). All various 1837 dates. G2, 4, 6 and 8 respectively. G-VG to Fine up to EF, some lower grades faulty, hinged or thinned – the \$3 note EF yet with thins at left end verso. 6 notes. (\$150-200)



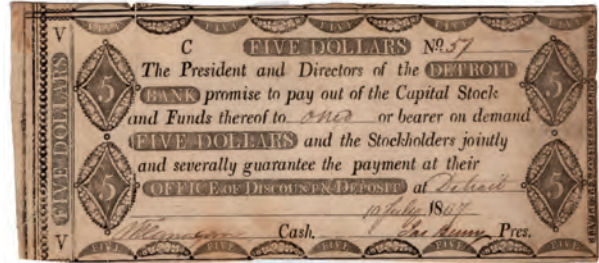
- 1194P. -. **Rare Census Topping Brest Note! Monroe & Ypsilanti Railroad Company.** MI-90. \$3, Novbr. 1, 1838. G6. A nice, bright Choice VF-EF example of this rare bank and denomination, bold signatures. Ex: *Charles Fenwick Collection and top of Census.* A trophy Michigan Obsolete. (\$1000-1500)
- 1195P. --. \$3, Novbr. 1, 1838. G6. Very faintly toned about EF, cpl trace thins and possible small areas of restoration visible on back only. Rare and still very pleasing, quite nice in overall appearance. (\$400-500)

Be sure to place your bids early, tie bids are always awarded to the earliest Bidder!

1196. **Brooklyn. Merchants Bank of Jackson County**, MI-95, \$1 and \$3, July 20, 1840, G2 and 10, VG-Fine and VF respectively, some scattered tiny pinholes to the first note, the second with only a pair. Also, an additional \$3, Jan. 2, 1838, G10 plus an Unissued Remainder note as well as third example with an unofficial date and endorsement, the latter two G12, avg VG, some faults, eroded or nibbed corners; the second of the last three notes repaired. A scarce quintet. 5 notes. (\$200-250)



1197. **Centerville. St. Joseph County Bank**, MI-100, \$3, Jan. 1, 1838, G6, VG, some scattered pinholes yet otherwise pleasing for the grade and very seldom offered, this being the Key denomination. Also, **Clinton, Bank of Clinton**, MI-105, \$2(2), \$3(3) and \$5, mixed dates 1836-1837 with several being Jan. 25, 1837, G4, 6 and 8 respectively, avg VG to Fine with small typical faults, cpl dampstained deuces, one \$3 nearly EF but pinholes. Viewing advised, neat group. 7 notes. (\$200-300)



1198. **Coldwater. Bank of Cold-Water**, MI-110, \$3, c.1837-38 Unissued Remainder, G6, AU-Unc, small horizontal cuts/cancels at signature lines, otherwise nice and scarce. Also, **Constantine, Bank of Constantine**, MI-115, \$3, July 1, 1839, G6, Ltly toned VG+, corner hinge rem verso, a very scarce issue and denom, one of the earliest reported dates with detailed note on back to Cashier and President – nice added historical value. A neat \$3 pairing. 2 notes. (\$200-300)

1200P. - - \$3, Nov. 1, 1807, G32 and \$5, July 10, 1807, G36. Avg Fine, the first with slightly deeper toning and cpl tiny pinholes. A very scarce and early pairing featuring the elusive \$3 denomination. 2 notes. (\$300-400)

1201. - **Detroit City Bank**. MI-125. \$1, Dec. 20, 1837, G2, Bright issued Coin Vignette note, AU-Unc, pinhole below cashier signature and uneven top margin as well as a \$3 pair, Dec. 20, 1837 issued note along with an Unsigned Remainder, both G6, repaired F-VF, hinges verso and fresh AU-Unc respectively. 3 notes. (\$150+)



1202P. - **Farmers & Mechanics' Bank of Michigan** – Payable in Detroit. MI-130. \$3, c.1829-1830's. G10. Unsigned/Undated Remainder, undoubtedly a Proof with tiny original punch perforations at signature areas. Bright EF or nearly so, only the slightest handling, bends and trace of hinge verso. Likely unique and important Michigan obsolete \$3 note. (\$400-600)

1199P. **Detroit. Detroit Bank**. MI-120. \$5(2), Oct. 24, 1806, G16 and \$10, Oct. 14, 1806, G20. Avg nice VF to EF-AU with bold penned signatures of Wm. Flanagan and A.B. Woodward, namesake of Woodward Avenue. A handsome early trio of Perkins Plate Notes. 3 notes. (\$200-300)



1203P. - - \$1, Sept. 1, 1861 & \$3, June 1, 1853. G100a and 104a respectively, listed as SENC by Haxby and plated for reference by Lee. Avg VG to VG+, the first with void at lower rt corner and the second with old repairs verso, both hinged. A very rare pair of overprinted issues. 2 notes. (\$300+)

Questions on a lot? Set up an appointment to view lots in the privacy of our offices today. Evenings & weekend times are available and lots can be viewed only prior to Auction Day. Lot viewing in person can give you a bidding advantage over those who do not view!



1204P. - - \$5, July 1, 1864 Unissued Remainder. G106a. Fresh Unc or virtually so. Lovely color and impression, this being part of an original trio of consecutively numbered high grade examples, likely as rendered from a sheet. (\$300-400)



1205P. - - As preceding lot except aUnc-Unc, one bumped corner and It pencil notation verso. This note is the consecutive successor to the previous lot and a wonderful companion as such. (\$200-300)



1206P. - - \$10, July 1, 1864 Unissued Remainder. G108a. Handsome Choice AU-Unc, cpl faint bends and bumps at corners. The predecessor to both of the two previous notes sequentially. A tough denom and important opportunity for the specialist. (\$300-400)

1207. - - **Bank of Michigan**. MI-140. \$1(2), \$2(2) and \$3, mixed dates 1833-1839, all different types. G4, 6, 10, 12 and 16. Avg G-VG to VG+, toned, the last crudely repaired – some with typical small faults. Also, an additional high grade \$3, Jan. 1, 1840, G64, lovely fresh AU with blue ink date and sigs, Kalamazoo Branch Stamp and countersigned at left end, a bright and handsome example, far, far above typical quality. 6 notes. (\$200+)

1208. - - **Michigan Insurance Bank**. MI-145. \$1, Dec. 2, 1861 along with \$2 and \$5 Unissued Reminders, one with Cashier sig. G2a & 6a, the first two avg AU, the last VF with faint orange/pink crayon "x" either side. Also, **Michigan Insurance Company** MI-146, \$3, July 18--, Unissued Remainder pair, both G12a, one Virtually Unc, small paper scuff at right end and a second in AU with multiple repairs, hinges, trace soil and pencil notation – all on back and note has nice presentation from the face, a tough issue with cool ornate engraved orange backs. Viewing recommended, neat lot. 5 notes. (\$200-300)

1209. - - **State Bank of Michigan**. MI-160. Fractional 5, 10, 25 and 50 Cents – all Nov. 1, 1862. VG to VF, cpl faulty with chips/repairs, one with punchmarks at signature – all signed by Wm. C. Duncan. Very Scarce & Haxby Unlisted along with \$1, \$3(2) and \$5, c.1859-1864, G2a, 6a and 8a plus **Peninsular Bank**, MI-155, \$5, c.1860's, G8c Unissued Remainder, nearly all handsome & colorful Unc. 9 notes. (\$300-400)



1210P. - - \$1-\$2-\$3-\$5, c.1859-64 Uncut Sheet of Reminders. X1. Unc, cpl trivial trace bends and hints of toning or ruffle in selvage, bold color. Nice sheet. 4 notes. (\$200-300)

1211. - - **Wyandotte Rolling Mill Co.** \$2 pair, Nov. 14, 1873. VF, small punch hole cancels at each signature line and a second example, Fine-VF, ornate punch cancel at center. Scarce and Haxby Unlisted. 2 notes. (\$200)

1212. **Eagle Harbor, Central Mining Company**, \$2, \$5(2) and \$10(2), mixed dates 1864-1868, all different unisyrf types along with **Eagle River, Bay State Mining Company**, \$5 and \$10, both c.1867. Avg VG to VG-Fine, cpl notes punch cancelled, some counterstamped or with added endorsements. Neat Haxby unlisted lot. 7 notes. (\$200-250)



1213P. **Erie. Erie Banking Company**. MI-165. \$1, July 4, 1840. G2. Fine to VF, some toning/possible trace of adhesive on reverse at ends. A Rare ace and very seldom offered. Worthy of a strong bid. (\$400-600)



1214P. - . \$2, July 4, 1840. G4. VF-EF, toning/possible trace of old adhesive verso at ends. Another Rare Erie issue and a terrific deuce denomination - perfect companion to the previous example. (\$400-600)

1215. **Flint Rapids. Farmers Bank of Genesee County.** MI-170. Wonderful denomination collection \$1, \$2, \$3, \$5, \$10 and \$20 - all Jan. 1838 issues, mixed dates. G2, 4, 6, 8, 10 and 12. VF-EF to EF-AU, the last cpl with a nibbed corner here and there - otherwise a nice set plus an additional \$10, c. 1838 Unissued Reminder, G10, pleasing Choice EF-AU and bright, seldom seen so nice or unissued. 7 notes. (\$200-300)



1216P. **Flint River. Genesee County Bank.** MI-175. \$3, c.1837-1839. G6. Date and sigs faded and appear to be later and facetious in nature. VG-Fine by wear and very scarce. (\$300-400)



1217P. **Gibraltar. Bank of Gibraltar.** MI-180. \$1 and \$3, c.1838. G2 and G6 respectively - the first with faded sigs and date, the second an Unissued Remainder. Appearance of G-VG and Fine+, horizontal repairs to the latter. A rare pairing indeed despite some condition issues. (\$600-800)



1218P. - . \$3, Remainder Issue falsely dated as March 1, 1861 with unofficial endorsements. G6. Appearance of Fine-VF. A rare town and denomination. (\$300-500)

1219. **Grand Haven/Dubuque, IA. Lumbermen's Bank of E.L. Fuller & Co.** \$3 trio, all dated Sept. 1, 1857. One Fine, cpl small spindle hole at center, a second VG-Fine with no spindle piercing and a third VG but punch cancelled and rubberstamped "W" on face, signature on right side is faded/smear. Scarce and unlisted in Haxby. 3 notes. (\$200+)



1220P. **Grand Rapids. Grand River Bank.** MI-190. \$3, c.1837-1839 Unissued Remainder. G6. Signed yet undated, cpl tiny trace ink burn spots at cashier signature, otherwise nice VF. A rarely offered denom from this city and bank. (\$200-300)

1221. - . **Exchange Bank of Daniel Ball & Co.,** \$5, Oct. 20, 1858, G-VG, reduced at borders, punch cancelled and a few wormholes along with **Grand River Bank**, MI-190, \$1, c.1837-39 Unissued Remainder, G2, featuring the Bust Dollar Heraldic Eagle reverse vignette, Fine but a few internal voids. Also, **Grand Rapids Bridge Company.** \$1, 18--. Unissued Remainder. Unc. Scarce trio, the first and last notes Haxby unlisted. 3 notes. (\$200+)

1222. **Gratiot. Commercial Bank.** MI-200, \$2, \$3, \$5 and \$10 Unissued Remainder Denomination Set, ND(1838), G2, 4, 6 and 8. aVF, AU-Unc, EF-AU and EF+ respectively, the last reduced with dampstain at left end along with \$2-\$3-\$5-\$10 Uncut Sheet of Unissued Reminders, c.1838, X1, toned VF with faint vertical & horizontal folds, some scattered wormholes and adhesive or dampstains/faded areas. 8 notes. (\$200-250)

1223. **Homer. Farmers Bank of Homer.** MI-205. \$1, Oct. 18, 1837. G2. VG-Fine, some edge/corner chipping at left and an old notation in red on verso. Also, **Marshall/Michigan City, IN. Exchange Bank of A.I. Perrin & Co.,** \$1 and \$2, April, 1862, bright AU-Unc and toned Fine, old split at top margin. Scarce Calhoun County trio. 3 notes. (\$200+)



1224P. - . **Rare Homer \$3 Note, Once in the Bowen and Lee Collections.** \$3, Sept. 8, 1837. G6. VF, cpl tiny pinholes yet sharp, bright and attractive. A very rare denomination and town combo. *This example was previously in the Bowen and Lee Collections.* Neat! (\$300-500)

**The Consignment Deadline
for our Spring Auction
is January 15, 2021**

1225. **Jackson. Detroit & St. Joseph Railroad Bank.** MI-210. Notes payable in Jackson, MI, \$3, c.1838-1840 Unissued Remainder, G10, bright Fine+, better aside from multiple folds and \$3, 184-, signed yet undated Remainder, G12, Fair-AG, voids at left end, cpl internal holes rt of center and chipped at top. Also, *Notes payable in Cincinnati, OH.* \$1, \$2, \$3 and \$5, the ace and three of Mar. 9, 1840 while the deuce and five are dated April 9, 1840, G20, 24, 28 and 34a respectively, avg solid VG to VG-Fine, some toning – the two and five with ink erosion at counter sigs. A neat grouping of early Jackson obsoletes for the specialist. 6 notes. (\$200-300)

1226. - -. \$1, Mar. 9, 1840, G22 and a \$3 pair from Jan 15, 1840 and Nov. 9, 1840, G28 and G28a respectively, first two notes Fine to Fine-VF, the last with VG appearance, old repaired vertical tear and chipping at edge – *all payable in Cincinnati, OH* along with **Jacksonburgh, Jackson County Bank**, MI-215, \$3 pair dated Nov. 15, 1837 and Dec. 1, 1837, both G4 and \$5, Nov. 15, 1837, G-6, AU, Fine with lt toning and VF respectively, cpl traces of minor faults verso. Nice run of 6 notes. (\$200-300)



1227P. **Kensington. Bank of Kensington.** MI-220. \$3 pair, Jan. 4, 1838 and Jan. 8, 1838. Both Haxby unlisted. The first VG-Fine, nibbed upper rt corner, some edge chips & tiny pinholes while the second note grades virtually Fine respectively, with cpl small chips and more prominent toning at left end. A very scarce odd denomination pair from this scandal-ridden Wildcat Bank; an infamous ghost town, once tied to railroad speculation scams and the eventual undoing of Rawsonville, Michigan's "Lost City of Atlantis", now submerged under Belleville Lake. 2 notes. (\$200-300)

1228. - -. \$5 pair, Jan. 4, 1838 and Jan. 10, 1838. Both G8. Fine and unevenly toned VG-Fine respectively. A solid duo of fivers from one of Michigan's most historic and colorful ghost towns, great relics of the Wildcat banking scandals of the period. 2 notes. (\$200-300)

1229. **Lafayette. Van Buren County Bank.** MI-225. \$5, c.1838 – Unused Remainder with unofficial or spurious sigs and dated March 4, 1853. G-6. VG, once spindled or with a small interior tear. Interesting note and very scarce issue, low grade yet not present in most collections. (\$100-150)

1230. **LaGrange. Cass County Bank.** \$1, \$3 and \$5. Unissued Remainder trio, unlisted in Haxby. Unc on nice fresh paper. 3 notes. (\$150-200)

1231. - -. \$1-\$3-\$5 Uncut Sheet of Unissued, unlisted Remainders. AU-Unc and appealing, cpl border smudges. 3 notes. (\$150-200)

Be sure to place your bids early, tie bids are always awarded to the earliest Bidder!



1232P. **Lapeer. Bank of Lapeer.** MI-235. \$1, \$3 and \$5, all Dec. 20, 1837. G2, 6 and 8. Fine-VF, about VF and VG-Fine respectively. A scarce and well-matched early dated denomination trio, all signed by Norman Davison, Michigan Pioneer and founder of the town of Davison. 3 notes. (\$300-500)



1233P. - -. \$5, Dec. 20, 1837. G8 and G10 types. Handsome EF to Choice EF and fresh. Nice pairing both signed by Norman Davison. 2 notes. (\$200-300)

1234. - . **Lapeer County Bank.** MI-240. \$3. G6 and listed in Haxby as SENC. This note is suspectly or surreptitiously dated Oct, 1842 with unofficial/possibly spurious signatures. Toned VG, torn away void at rt end, rough corners at left, notation verso. Problematic from a condition standpoint, yet highly unusual and very rare, without auction comparables. (\$150-200)

1235. **Linden. Jacob & Jarrid Hyatt, Grocers,** 5c, 10c, 25c and 50c, Dec. 24, 1862, avg sharp and attractive EF. Also, **Pontiac, Oakland County Bank**, \$1, Oct. 10, 1843, Fine and **Wisconsin, Green Bay, Bank of Wisconsin**, \$5, Nov. 1, 1839, VG, damaged/ repaired – reduced at right end. 6 notes. (\$150-200)



1236P. **Lower Saginaw. Saginaw County Bank.** MI-245. \$3, with fantasy/spurious date and endorsements. G8. Overall Fine to VF and pleasing. An incredibly rare note, unlisted in Bowen and only appearing once in a generation. A unique opportunity for the advanced collector. (\$600-800)

1237. **Manchester. Bank of Manchester,** MI-250, \$2, \$3(2), \$5 and \$10, all Nov. 20, 1837, G2, 4, 6 and 8 respectively. VG-Fine to EF, most cut cancelled, one with hinge closure verso. Additionally, **Marshall, Calhoun County Bank,** MI-255, \$3 pair, c.1837-1838, as G6 but two suspiciously & partially dated/endorsed examples – VG and Good, the first with multiple hinges verso, the latter with rough periphery and a pinhole/ink burn spot. Also, **Marquette, Collins Iron Works,** \$3, Dec 1, 1872, solid VG-Fine. 8 notes. (\$200-250)



1238P. **Marshall. Bank of Marshall.** MI-260. \$3, Oct. 24, 1837. G6. Fine. A very rare and underrated denomination, this being the only example of this issue offered in a decade and a half according to our research. (\$500-750)

1239. -. **Bank of Michigan,** MI-265, \$1, \$3 and \$5, G2, 4 and 6 plus \$1-\$3 Uncut Sheet, X1, c.1862-1865, Unissued Reminders, no dates or signatures, avg Unc to Choice Unc on nice bright paper. Also, **Bank of Marshall,** MI-260, \$2, Oct. 24, 1837, G4, Fine, a few tiny edge chips and toning. 6 notes. (\$200+)



1240P. **Michigan Centre. Bank of Michigan Centre.** MI-270. \$3, c.1837-1838 Unissued Remainder Pairing. One G6 Choice AU-Unc and a second, punch hole cancelled possible Proof or Prototype, backed and a very unusual underprint or overprint in present, VG-Fine, heavily foxed and repaired. A very unique pair of threes in spite of the impairments, one being possibly unique. 2 notes. (\$300-500)

1241. **Monroe. Merchant's and Mechanics Bank Collection,** MI-275, featuring \$1, \$2, \$3 Burton & Gurley variety plus \$5(2) Burton & Gurley and other Unissued Reminders. G4, 8, 12, 14 and 16. The deuce grades Fine with vertical creases while the others, all different varieties, grade EF-AU to Unc with faint toning along with additional \$3, Nov. 11, 1837, G10, nice VF-EF and scarce; another \$3, Undated yet signed (spuriously?) Remainder, G12, G-VG, small faults and \$10, June 1, 1838, possible unofficial date and sigs, G18, VF, old repair at top left plus \$1-\$2-\$3-\$5, Uncut Sheet of Unissued Reminders, X2, EF-AU with nice paper color, a few random bends and hinge rems verso. 12 notes in all. (\$300-400)



1242P. -. **Remarkable Bank of Monroe Three Dollar Doc Lee plate Note Rarity! Bank of Monroe. Early Issues.** MI-280. \$3, July 18, 1828. G6. Handsome VF-EF, a tremendous rarity, this example appearing in Lee's book as the plate note. An important opportunity for the specialist. Rare denomination and grade. (\$1000-1500)

1243. -. **Revived Bank Issues Type and Denomination Ensemble.** Features \$1, \$2, \$3(2), \$4, \$5 and \$10, mixed dates 1835-1836, one 3 Dollar falsely dated and endorsed. G20, 22, 24, 26, 28 and 30. VG to VF, some toning and small faults. Interesting Bank and time period with Mormon ties. 7 notes. (\$200-300)

1244. -. **Bank of River Raisin.** MI-285. \$3 Trio, all Jany. 2, 1843. G6. The first two notes nice solid VG to Fine, the last one slightly soiled and faulty AG. Neat lot featuring the sought after "Raisin" bank spelling. 3 notes. (\$150-250)

1245. -. **Bank of River Raisin. Revived Bank Issues.** \$1, \$3(4), \$5(2) and \$10, mixed dates, mostly 1843-1844 and two Unissued Reminders of the era. G42, 50, 54 and 58 respectively, G-VG to VF, a few with faults, mount residue or foxing as typically encountered. Also, \$1-\$1-\$2-\$3 Uncut Sheet of Unissued Reminders, all engraved payable to Lewis Cass with engraved plate letters present, VF, some old folds/bends, trace dampstain and cpl hinge rems verso but tough in sheet form. A nice array of denoms & type singles along with an original uncut sheet. 12 notes. (\$300-400)

1246. -. **River Raisin & Lake Erie Railroad Company,** MI-290, \$1(2), \$2(2), \$3(2) and \$5, mixed dates 1836-1840 and one Undated Remainder note, G8a, 10a, 16a, 18a, 24a and 32, Good-VG to Fine, some small faults or dampstains, the last an Unsigned Remainder with red rubberstamped ad for Louis B. Grim Segars-Tobacco along with \$1 and \$2, July 9, 1863 and August 1863, G14 and 22a, handsome AU and EF respectively the second note with some slight smudging at margins, bold green backs. Also, \$3 trio, August 20, 1863(2) and the third with indistinct faded date and sigs, G30a, nice Fine-VF, wrinkled VG and faulty G-VG, scuff reverse – the first two with rubberstamped ads in margins verso for H. Schmidt – Tobacco and the Russian American Fur Co, an intriguing ensemble of three dollar greenbacks add to the lure of this lot. Viewing advised. A very historic and interesting lot. 12 notes. (\$300-500)

1247. **Mt. Clemens. Bank of Macomb County.** MI-295. Type and denomination assortment, Features Early Issue - \$5, Feb. 6, 1834, G8, AG but voids at both ends along with Revived Bank Issues - \$1(2), \$2, \$3(2), \$5 & \$10 signed and issued notes plus \$10 Unissued Remainder, mixed common types, mostly 1858 dates and a couple others and additional **Revived Bank Issue** \$3 and \$5 Reminders, both Unc with nice color. Otherwise balance of lot avg VG to VF, some toning, cpl with minor problems. Viewing advised. 11 notes. (\$250-300)

1248. **Niles. Bank of Niles.** MI-300. \$1, \$2, \$3 and \$5, various January 1838 dates. G2, 4, 6 and 8. Avg VG-Fine appearance with well matched lt toning, some typical faults – the \$3 with hinges and mounts verso. Also, an additional better grade \$3, Jan. 11, 1838, G6, VF, mostly bright, a few tiny pinholes and small areas of faint discoloration – otherwise pleasing. A scarce denominational grouping. 5 notes. (\$200-300)



1249P. **Owosso. (Owosso spelling error)** High grade \$3 pairing, features one example on **Bank of Owosso**, MI-305, c.1838, G6, Unissued Remainder, attractive Unc and a second specimen on **Bank of Shiawassee**, MI-310, c.1837-1838, G4, Unissued Remainder, sharp EF-AU, nibbed corner at lower right. 2 notes. (\$250-300)

1250. -. A similar yet lesser grade \$3 pair, features one example, **Bank of Owosso, (Owosso spelling error)** MI305, c.1838, G6, Unissued Remainder, Fine or nearly so, a few tiny wormholes at upper left along with another, **Bank of Shiawassee**, MI-310, c.1837-1838, G4, overall appearance of Good, internal seps and one hinge repaired tear, reduced at right, falsely signed yet undated. An intriguing pair of well-circulated Unissued Remainders on a very tough Shiawassee County town. 2 notes. (\$150-200)

1251. **Palmyra. Lenawee County Bank**, MI-315, \$3 trio, Dec. 22 and 23, 1837 examples plus \$5, Dec. 22, 1837. G6 and G8 respectively. Fine, VG and Fine respectively, cpl faint dampstains along with an interesting quartet on **Palmyra & Jacksonburgh Railroad Co.**, featuring \$1 and \$3, both Apl. 5, 1838, avg toned VG, the second with cpl small holes near sec. sig, both with redemption rubberstamps for Tecumseh plus \$1, Unissued Remainder and \$2, likely spuriously dated & signed October 1862, avg F-VF with fresh paper color – all Haxby unlisted. 7 notes. (\$200-300)

1252. -. **Palmyra & Jacksonburgh Railroad Co. \$3 Type Trio.** Features an Unsigned/Undated Remainder, plus Apl. 5, 1838 and Jan. 4, 1860 examples – the second with Clinton redemption stamping and the last with vibrant red “THREE” Overprint. Unc with tiny pinholes at center; VG and VF respectively. A handsome and diverse trio of better \$3 denoms, Haxby unlisted. 3 notes. (\$200-300)

1253. **Plymouth. Wayne County Bank at Plymouth.** MI-320. \$1, \$2 and \$3, Dec. 1 partially dated and other undated Remainders. G2, 4 and 6. Good-VG, backed Fair and G-VG spurious signatures respectively. A rare trio featuring the Bust Dollar vignette on the Ace note. 3 notes. (\$300-500)

1254. **Pontiac. Clinton Canal Bank**, MI-325, \$2 and \$3, both Dec. 9, 1837, G4 and 6, Avg VG-Fine, cpl small faults along with higher grade \$3, \$5 and \$10, all Dec. 9 or 10, 1837 dated examples, G6, 8 and 10, avg nice ltly toned AU to AU-Unc, a few tiny typical pinholes or faint bends yet appealing. Also, **Bank of Pontiac**, MI-79

350, \$1 and \$3(2), all March 1864, G24 and 32, avg VF-EF, cpl nibbed corners from mount removal, cpl sealed spindle holes, still pleasing. 8 notes. (\$200-300)

1255. -. **Farmers & Mechanics Bank**, MI-335, \$5 and \$10, both Dec. 25, 1837. G8 and 10 respectively. VF and Fine or virtually so, the second with one soft corner and cpl bumps/internal seps near bottom margin plus **Bank of Oakland**, MI-340, \$3, Sep. 5, 1837, G6, pleasing VF-EF, nearly identical to the Vlack specimen and an equally desirable example of this tough Pontiac type and denom. 3 notes. (\$200-300)

1256. -. **Oakland County Bank**, MI-345, diverse denomination grouping including \$1, Oct. 10, 1843, G12, appearance of VF+, tiny pinholes and seps near center otherwise nice; \$2 pairing, ND(c.1830's), G10, Unissued Remainder, toned EF-AU, tiny void at rt signature line/some dark spots along with Oct. 10, 1843, G14, solid Fine+; \$3 pair, Sept. 21, 1843 and Oct. 10, 1843 respectively. G20 and 24a. VG-Fine, lt dampstain and nice AU, lt toning, no cut cancel. Also, \$5, Jany. 15, 1846, G32a, Fine+, cpl hairline internal seps & tiny pinholes and another variant, **Bank of Central New York, Utica payable** \$5, Jany. 1, 1839, G40a, Unissued Remainder, Fine, faint tone spots. A scarce and comprehensive grouping. 7 notes. (\$300-400)

1257. **Pontiac. Bank of Pontiac.** MI-350. Nice collector quintet featuring **Early Issues**, \$1.25 and \$1.75, c.1835-1840, G4 and 8 respectively, avg AU-Unc, both sharp, the first faintly filled in partially with imitation dates/etc while the second displays lt trace stains/mounts verso as well as **Revived Bank Issues**, \$1, \$2 and \$5 trio, all September 1, 1863, G26b, 30a and 38b, Sharp AU, VG and Fine-VF respectively – the last with toning at ends and old hinge verso, these later variants being a neat green tint and panel trio. Nice lot. 5 notes. (\$200-300)

1258. **Royal Oak. Farmers Bank of Oakland.** MI-355. \$3 pairing with post dated unofficial endorsements circa 1853-1854. Both G12. Avg VG, small faults yet very presentable. Also, **Saginaw. City of Saginaw**, George L. Burrows Banker, 5 and 10 Cents, Nov. 24, 1862 Unissued Remainders, avg Unc and **East Saginaw**, W.L.P. Little & Co. Bankers, 5, 10, 25 and 50 Cents, Dec. 1, 1862, Remainders, the first two EF, the higher denoms VG. 8 notes. (\$200+)

1259. -. **Saginaw City Bank.** MI-360. \$2(2), \$3(2) and \$10, all Dec. 26, 1837. G4, 6 and 10 respectively. The first two notes avg VG-Fine to Fine, while the last grades AU-Unc, cpl with minor impairments. 5 notes. (\$200-300)



Lot 1260
More pictures and
description on next page



1269P. - . **St. Clair and Romeo Railroad Co. MI-370.** \$3, c.1836-1837. G6. Lovely Proof Remainder on card stock, lacking the typical punch cancels at the signature areas. Outstanding Unc and rare with large lower margin and fresh appearance, no mounts or detriments. A rare opportunity for the collector. (\$500-750)



1270P. - . \$3, c.1836-1837. G6. Unissued Remainder, Fine, uneven margins, a few chips, areas of toning and cpl tiny pinholes yet sharp vignettes and still presents well. Rare and unusual issue and denomination. (\$200-300)

1271. **St. Joseph. Farmers & Merchants Bank. MI-380.** \$1, \$2 and \$3, c.1838 Unissued Reminders, G2, 4 and 6, all fresh AU-Unc to Unc, cpl with small inclusions along with an additional pair of \$1 examples falsely endorsed and dated, aVF and AG-Good, the latter with severe ink burn and seps. Neat group of unusual Reminders. 5 notes. (\$200+)

1272. **Saline. Bank of Saline. MI-385.** \$2 and \$3, Dec. 1 and Nov. 1, 1837 dates and \$5, Jan. 1, 1838. G4, 6 and 8. Fine, AU-Unc cpl tiny pinholes and VG+ cpl internal seps respectively. Scarce trio. 3 notes. (\$150-200)

1273. **Sault De. St. Marys. Chippeway County Bank, MI-390,** \$3, ND(1838), G3, Unissued Remainder, G-VG, old tear/repair at left, small faults along with **Bank of Chippeway, MI-395,** denomination set, \$2, \$3, \$5 and \$10, all Jan. 3, 1838, G2, 4, 6 and 10, avg EF-AU to Unc, areas of toning, cpl with hinges or lt folds/wrinkles. 5 notes. (\$200-300)

1274. - . **Bank of Chippeway, MI-395,** \$2, \$3(2) and \$5, all Jan. 3, 1838. G2, 4 and 6. EF-AU to Unc with lt toning. Nice ensemble. 4 notes. (\$200-250)



1275P. **Schoolcraft. Farmers Bank of Prairie Ronde.** \$5, questionably post dated and endorsed as Jan. 1858. Good-VG appearance, old hinge repaired tear at top and area of an old dampstain. Very rare and still a displayable and solid example. (\$200+)

1260P. - . **\$2, \$3, \$5 and \$10 Denomination Set,** all Dec. 26, 1837. G4, 6, 8 and 10 respectively. Avg fresh bright AU to Unc – some tiny impairments such as micro pinholes, uneven margins, paper ruffles, etc. An otherwise attractive group initially appearing as nice Unc. 4 notes. (\$300-400)

1261. - . Similar to preceding lot. AU-Unc, a few minor inclusions. 4 notes. (\$300-400)

1262. - . As preceding lot. 4 notes. (\$300-400)

1263. - . Similar to preceding lot. 4 notes. (\$300-400)

1264. - . Similar to preceding lot except EF-AU to Unc, some trace toning or tiny faults but appealing. 4 notes. (\$200-300)

1265. - . Similar to preceding lot except EF to AU-Unc, some small issues as in previous groupings yet still handsome. 4 notes. (\$200-300)

1266. **St. Clair. Bank of St. Clair. MI-365. Notes Payable at the Bank in St. Clair. MI-265.** \$1, \$5(12) and \$10, nearly all dated Jan. 10, 1837. G2, 8 and 10 respectively. Fair to VG-Fine, many toned or soiled, some with chipping or voids around borders, a few repaired, mounted or rough, still a presentable collector grade grouping. 14 notes. (\$200-300)

1267. - . **Notes Payable at the Bank in Detroit.** \$1 and \$3, both Nov. 10, 1843 plus \$10, April 4, 1844. G20, 28 and 36 respectively. Avg VG to VG-Fine, some lt dampstains/toning, a few tiny pinholes – the \$10 with a small paper scuff, accompanied by a 1966 donation letter from the Bank President of the Commercial & Savings Bank of St. Clair County along with **Notes Payable in Newark, Ohio,** \$5(5), all July 1, 1840, G56, all featuring the appropriate red rubberstamp and counter signatures at left along with the payable printed line “of Messrs. Smith Newark, OH” crossed out in pen, Good-VG to VG, some typical small faults, paper pulls, creases and minor edge chips/rollovers. A really intriguing ensemble for the collector. 8 notes + letter. (\$200-300)

1268. - . **Lesser grade Payable in Ohio Selection of Banknotes.** Features **Bank of Circleville, OH notes** \$5(3), Jan. 1, 1837(?), G44, avg tattered Fair-AG to AG-Good and **Newark, OH notes** \$2(2), \$5(3) and \$10, all July 1, 1840, G52, 56 and 58 respectively, avg AG-Good to G-VG, some faults, wormholes and spindle holes, tattered edges, etc. All with respective red rubber stamp redemption markings and counter signatures for the Ohio financial locations. A rare but lower grade grouping. 9 notes. (\$200-300)

***Lot Viewing will be regulated according to prevailing Covid-19 protocols, please call for appointment times well in advance after the catalog is released.**

1276. **Sharon. Farmers Bank of Sharon.** MI-410. \$1 and \$3, both Dec. 23, 1837. G2 and 4 respectively, Avg G-VG with old faults/repairs, the first with some pen restoration, a seldom encountered pair. Also, **Ypsilanti. Bank of Ypsilanti**, MI-465, \$1, \$3 and \$5, Jan. 2/ June 15/March 4, 1837 respectively, G2, 6 and 8, G-VG, wrinkle and tiny POC, VG-Fine and VG edge chips. 5 notes. (\$200-300)

1277. **Shiawassee. The Exchange Bank.** MI-415. \$3 pairing, ND(1838). G8. Unissued Reminders, one Choice AU-Unc and another in VF, scattered wormholes and interior seps. A scarce bank and neat odd denomination pair. 2 notes. (\$200+)



1278P. **Singapore. Bank of Singapore.** MI-420. \$3, Remainder with spurious Dec. 30, 1837 date and endorsements. G6. Ltly toned AU, small ink burn hole at serial number area as executed, cpl traces of old mount residue visible verso only. Popular and very similar to the Eric Newman example. (\$200-250)

1279. **Tecumseh. Bank of Tecumseh, Revived Bank Issues.** MI-435. Coin note trio featuring \$2, May 1, 1856 and a \$3 pair, one dated June 12, 1855 along with a second example being an Unissued Remainder. G24a and 26a. Fine, tiny pinholes; VG stain or adhesive residue at upper rt corner and G-VG, faded/soiled, back border tape reinforced & small faults respectively. Also, an additional Tecumseh \$5 note, Aug. 22, 1859, G30a, Choice EF-AU with nice green tint, a few micro pinholes noted for accuracy along with **Utica. Bank of Utica – The Shelby & Detroit Railroad Compy**, 25 Cents, Feb. 13, 1838, appearance of VG, cpl repairs, most notably at the lower rt corner and one old tape adhesion verso, another rare coin note issue featuring a depiction of the Capped Bust Quarter reverse. A very interesting lot. 5 notes. (\$200-300)

1280. -. **Tecumseh Bank.** MI-440. \$1-\$1-\$3-\$5 Uncut Sheet of Remainder Notes, ND(1838). X1. Nice ltly toned Unc with selvage plus additional notes from a similar cut sheet, \$1, \$3 and \$5, G2, 4 and 6, avg toned AU-Unc the last with small tape rems verso, the \$3 foxed. Also, **Toledo. The Erie & Kalamazoo Railroad Compy.** 25c-25c-50c Uncut Unissued Remainder Sheet, ND, VF-EF, would grade higher save for some horizontal folds from long ago. 10 notes total, most being in uncut sheet form. (\$200-300)



1281P. **White Pigeon. Bank of White Pigeon.** MI-455. \$1, June 1, 1843 spurious date and signatures on Remainder note. G2. Fine or slightly better appearance, cpl tiny inclusions, a possible very well-executed repair or restored region. Rare and popular. (\$200-250)

*P Denotes a lot that is Photographed,
Images may be enlarged or reduced in size*



1282P. **Zilwaukie. (Bank of) Zilwaukie.** \$3, June 1, 1861. Toned VG+, cpl tiny edge chips, sharp impression and bold vignettes. An exceptionally rare note and perhaps one of the rarest denoms from this locale. Missing from most major Michigan collections. (\$500-750)

Mississippi

1283. **Macon**, State of Mississippi, \$3, May 1, 1864, EF-AU, some lt areas of toning and **Jackson**, State of Mississippi, \$1 and \$2, both Sept. 1, 1870, avg PHC VF with small faults along with **Louisiana, Vidalia**, Parish of Concordia, \$2, April 15, 1862, about EF; **Missouri, Jefferson City**, State of Missouri (In Secession), \$1, January 1, 1862, Cr.13, AU, small nick at lower rt corner-otherwise nice and **South Carolina, Charleston**, Bank of South Carolina, \$1, 1862, F-VF, a few old pin holes. 6 notes. (\$200-300)

Nebraska (Territory)

1284. **DeSoto**, Corn Exchange Bank, \$1, Dec. 1, 1860, Fine, cpl rollovers/bumps at edge and one tiny ink burn through at sig along with Bank of DeSoto, \$2, Oct. 1, 1863, pleasing fresh AU, a sharp green overprint Territorial banknote pairing plus **Omaha City**, Western Exchange Fire & Marine Insurance Company, \$1-\$2-\$3-\$5 Uncut Unissued Sheet of Reminders, November 2, 1857, pleasing AU-Unc, cpl tiny toning spots, horizontal bend at bottom of the top note – a popular territorial sheet with terrific Western Americana vignettes. Neat Nebraska Territorial ensemble! 6 notes. (\$200-300)

New Jersey

1285. **Newton**, Sussex Bank, \$1-\$1-\$1-\$2, Uncut Unissued Sheet of Reminders, 18__, plus **NH, Farmington**, Farmington Bank, \$1-\$2 two note Uncut Unissued Sheet of Reminders. Both ltly toned appealing Unc, cpl tiny flecks or smudges – the first with a single micro pin hole upper left. 6 notes. (\$150-200)

New York

1286. **Diverse Locales & Issuers Assortment, c.1838-1864.** Features **Albion**, Bank of Albion, \$2; **Elmira**, Bank of Chemung, \$1; **Glen Falls**, Commercial Bank, \$2; **Hagerstown**, Franklin RR/Hagerstown Bank, 50c; **New York**, NY Loan Co., \$10 & North River Banking Co., \$100; **Palmyra**, Wayne Co. Bank, \$5; **Poughkeepsie**, Bank of Poughkeepsie, \$5 along with private issue Fractionals, **Amenia**, Bank of Pawling, 5c and **Schenectady**, Van De Bogert Brothers, 3c. One Unissued Remainder, others are issued notes. Avg circ to EF, mostly VG to VF, cpl faulty with balance of lot pleasing. Inspection advised. 10 notes. (\$200-300)

Ohio

1287. **Unusual Selection of Towns, Issuers & Denominations, c.1817-1862.** **Cleveland**, City Order, 5c; **Manhattan**, Manhattan Bank, \$3; **Marietta(Marietta)**, Ohio River Bank, \$100 Fantasy; **Massillon**, Bank of Massillon, \$5; **New Salem**, Jefferson Bank, \$1; **Ohio City**, Ohio Rail Road Bank, \$1 Unc Remainder and \$5 Issued note, VF along with **Worthington**, Ezra Griswold, \$1 Remainder. Also, **Pennsylvania -Montrose**, Susquehanna County Bank \$5; **Philadelphia**, Girard Loan Company, 10c and **Schuylkill**, Schuylkill Bank, 12 1/2c. Lot averages VG to AU except where noted, cpl with mount rems or small faults, others nice. Viewing recommended. 11 notes. (\$200-300)

Pennsylvania

1288. **Smethport**. McKean County Bank. \$5-\$5-\$5-\$5 Uncut Unissued Sheet of Remainders, 185_. EF, toning and lt chips at selvage, bends, cpl nibbed/bumped corners. Also, **Ohio, Portage County**, Franklin Silk Co., \$5-\$5-\$5-\$10 Uncut Unsigned Sheet of Remainders, 18__, VF, small faults, mount rems & edge chips in selvage plus **New York, NY Hungarian Fund**, Egy Forint \$1-\$1-\$1-\$1 Remainder Sheet, 18__, VF-EF, irregular edges in border selvage. 12 notes. (\$150-200)

Rhode Island

1289. **Johnston**, Rhode Island Agricultural Bank, \$5, \$10 and \$20 Unissued Remainders, 18__, the first toned VF-EF w/punch cancels at sig areas as similar to a Proof yet May 10, 1834 written in date, the last two undated AU-Unc, mount rems verso. Also, **Newport**, Merchants Bank, \$2 and \$3, Unissued Remainders, 18__, the first falsely dated Jan 1, 1866 and the second undated, avg VF-EF, small faults. 5 notes. (\$150+)

South Carolina

1290. **Columbia**, State of South Carolina, \$20-\$20-\$50-\$50, March 2, 1872 Uncut Unissued Remainder Sheet, ltly toned EF, lt horizontal quarter folds, perfect for framing along with **Florida**, Tallahassee Rail Road Company, \$1, \$2 and \$3 undated Remainder Reprints by ABNCo, AU-Unc 7 notes. (\$150-200)



Vermont

1291P. **Bennington**. Bank of Bennington. \$3-\$4-\$6-\$7 Uncut Unissued Sheet of Remainders, 18__. Ltly toned Choice AU-Unc, some irregularity at right and darker smudging at borders of selvage only. Seldom seen and all highly unusual denoms from this bank – especially rare as an intact original sheet! A unique opportunity to acquire such an item, a super showcase sheet of odd denoms. 4 notes. (\$500-750)



1292P. **Jamaica**. West River Bank. \$1-\$2-\$3-\$5 Uncut Unissued Sheet of Remainders, 18__. Handsome Unc with fresh color and impression, each note featuring the popular “coin note” vignettes of Seated Liberty coinage and cherubs surrounding. Nice sheet. 4 notes. (\$150-250)



Virginia

1293P. **Winchester**. Farmers Bank of Virginia. 6&1/4c-12&1/2c-25c-50c-\$1 Uncut Unissued Sheet of Remainders, Nov. 1, 1839. Ltly toned Unc, mostly toned at border of selvage, some tiny bumps/chips – otherwise nice. Terrific odd denoms/fractionals & early coin vignettes of Mexican Reales and Seated Liberty era specie. A really neat and rarely encountered sheet! 6 notes. (\$200-250)

Miscellaneous & Group Lots

1294. **East Coast Mixed States Banknote Assortment.** Includes **MD, Hagerstown**, Valley Bank, \$5, Jan. 31, 1855(2), Fine-VF and faulty AG-G with voids; **MA, Boston**, Cochituate Bank, \$5, Jan. 1, 1853, Blue ovpt, VF and **Salem**, Merchants Bank, \$3, Oct. 8, 1854, VG notation on back; **NJ, New Brunswick**, Farmers & Merchants Bank, \$2, fantasy date of 1860, faulty AG, mount rem rev; **VA, Harrisonburg**, Bank of Rockingham, \$1, falsely signed "Robert E. Lee", undated, spurious notation on face as "captured from a Confederate soldier", VG+, cpl small pinholes and trace mounts verso; **Portsmouth**, City of Portsmouth, 25c and \$1(2), Oct. 29, 1862, avg VG & **Richmond**, City of Richmond, 75 Cents, April 14, 1862; Bank of the Commonwealth, \$1, May 1, 1861 along with Virginia Treasury Note, \$1(2), both July 21, 1862 – avg VG to EF, cpl with typical minor faults. **VT, Windsor**, Bank of Windsor, \$1 Unissued Remainder, 18__ and \$5 Issued note, July 1, 1834, AU and VF, edge hits respectively along with **St. Albans**, Second National College Bank, \$5, Sept. 27, 1866, VF, cpl edge chips. Interesting lot. 16 notes. (\$200-300)
1295. **Mixed States Civil War & Reconstruction Era Grouping of Notes, Scrip & Ephemera.** Includes **Massachusetts**, 14th Massachusetts Heavy Artillery Regiment, 50 Cents Sutler Issue, ND, EF; **Mississippi**, Jackson, State of MS \$1, Nov. 1, 1862, AU and **Georgia, Atlanta**, Western & Atlantic R.R., 50 Cents, July 1, 1862, punched VF; **SC, Columbia**, Revenue Bond Scrip \$5 and \$50, Mar. 2, 1872, unevenly cut AU and handsome AU respectively plus **Charleston**, SC Railroad Co Fare Ticket, July 1, 1873, VG-Fine, old spindle/cut cancel repair to back and **Virginia, Richmond** – VA Treasury Note, Mar. 13, 1862, unevenly cut, EF, mount rem verso. Also, **Ohio**, 89th Volunteers, Paymaster stub, July 20th, 1863 and **Columbus, OH** – Relief Fund for Families of Volunteers, checks circa 1866(4); **Gettysburg, PA, National Bank** cancelled checks, circa 1890's(4) along with **Michigan**, Livingston Republican Extra edition small broadside, March 5, 1861, featuring the Presidential Inaugural Address, balance of items grade Fine to EF except where noted. Neat ensemble for the specialist. 7 notes/scrip plus 10 mixed checks & ephemera pieces – 17 items in all. (\$200+)
1296. **Mostly Civil War Era & Later Type Grouping.** Includes **Alabama**, Montgomery – State of AL, 25 Cents, Jan. 1, 1863, aVF; **Georgia**, Milledgeville, State of GA, \$20, April 6, 1864, VF; **Louisiana**, New Orleans, Canal Bank, \$20, Unc remainder; **Mississippi**, Jackson, State of MS, \$1, Sept. 1, 1870, EF, punch cancelled and **North Carolina**, Raleigh, State of NC, 10 Cents, Jan. 1, 1863, toned EF, cpl hinge rems and lt discoloration. Also, **CT**, Bank of N.E. at Goodspeed's Landing, \$1 and **OH**, Cuyahoga Falls, Summit County Bank, 50 Cents, 1862, both falsely signed AU; **NY**, Centaur Bank "100" Liniment Ad Note, VF+, crude repairs and **VT, Corinth**, Unknown Issuing Bank, 5c-50c-25c-5c-50c-25c-10c-50c-25c Uncut Unissued Sheet of Reminders, Dec. 1862. Toned VF-EF, cpl traces of lt old dampstains and bends, slightly uneven bottom selvage. An intriguing assortment. 17 notes. (\$200-300)
1297. **Large Framed ABNC Reissue of Rawdon, Wright, Hatch & Edson Engraving Sampler of 19th Century Vignettes & Banknote Design Elements.** A huge 22" x 28" card stock ABNC reissue print from the original plate - housed in an older, oversized frame – this print being a 1979 limited edition run of only 998 pcs, with an issue price at the time of \$65 plus shipping. An impressive and now sought after issue, even tied to the souvenir card community with a catalog number of FSO1979A. EF condition overall, some slight old wrinkling, toning and the faintest of dampstains from storage - lt chipping to the older vintage frame; giving it an almost original vibe and appearance of age. An interesting piece for décor use in an office, coin shop or vault room. Inspection advised. Neat item for the obsolete currency collector! (\$100-150)

United States Paper Money**Large Size Type Notes****Treasury Notes**

1298. \$1, 1891. Fr. 351. PCG (not PCGS or PMG) graded Fine, bold colors and bright, cpl repairs notable at margins, visible mostly from the back. Still quite presentable for type and looks VF from the face of the note.



- 1299P. \$1, 1891. Fr. 352. PMG Choice Unc 64 EPQ. An exemplary specimen of this rare issue, crackling fresh with an abundance of color.



- 1300P. \$2, 1891. Fr. 356. Choice Fine-VF, some lt soiling and discoloration, more prominent verso.



- 1301P. \$5, 1891. Fr. 363. Fine if not slightly better by wear, trace soiling or faint rust stain to right of portrait. Ex: Ross Bailey Collection.



- 1302P. \$10, 1890. Fr. 366. Appealing and colorful VF, tiny rust spot near bottom left margin and a single pinhole mentioned for accuracy – otherwise nice.

Questions on a lot? Set up an appointment to view lots in the privacy of our offices today. Evenings & weekend times are available and lots can be viewed only prior to Auction Day. Lot viewing in person can give you a bidding advantage over those who do not view!

Legal Tender



1303P. \$1, 1862. Fr. 16c. PMG Unc 62 EPQ. A tremendous note for the grade, nice color and impression.



1304P. \$1, 1875. Fr. 26. PMG AU53, fresh paper and vivid colors.



1305P. \$1, 1917. Fr. 36. PCGS EF45, the note appears a full grade nicer, tiny smudge lower left corner on back.

1306. \$1, 1917. Fr. 36(2), one about EF and fresh plus a second example VF-EF, washed long ago, very slight discoloration and traces of rust. Also, an additional trio of Fr. 39 aces, one VF-EF, staple holes at left end, paper scuff & trace of adhesive at right alongside another pair grading VG, both with typical small faults. 5 notes.

1307. \$1, 1917. One Fr. 38 Mule, pleasing Choice EF-AU, a few hints of toning and a second ace Fr. 39 example, fresh Choice AU with nice color & white paper. 2 notes.



1308P. \$2, 1862. Fr. 41a. VF, cpl soft/slightly nibbed corners. A scarce and appealing early deuce.

1309. \$2, 1917, Fr. 57, soiled VG and Fr. 60(3), one EF-AU and another pair avg VG, one with void at corner – the second with chipped margin upper right end. Also, \$5, 1907, Fr. 90, a solid VG Woodchopper. 5 notes.

Consigning is an easy process! You can ship your coins directly to us or visit our offices. We also travel for larger collections and are more than happy to assist you in listing your material.



1310P. \$2, 1917. Fr. 60. PCGS Very Choice New 64PPQ.



1311P. \$5, 1863. Fr. 63a. PMG VF25, comments as minor restoration, barely discernible and still handsome.



1312P. \$5, 1907. Fr. 91 "PCBLIC" Error. PCGS Very Choice New 64. A very desirable Mint State Woodchopper note & popular sub-variety.



1313P. \$10, 1880. Fr. 106. Appearance of Choice EF-AU, trace of discoloration at right end, possibly expertly trimmed at one time – otherwise a highly desirable "Jackass" note.



1314P. \$10, 1880. Fr. 111. Fine, areas of dampstaining, small pinhole. Still a very presentable example of the famous "Jackass" note.

Be sure to place your bids early, tie bids are always awarded to the earliest Bidder!



1315P. \$10, 1901. Fr. 116. PMG VF30. A seemingly conservatively graded sharp and handsome Bison note.



1316P. \$20, 1880. Fr. 147 Mule. PMG VF25, bright paper and vibrant colors for the grade.

Silver Certificates



1317P. \$1, 1886. Fr. 216. PMG Choice EF45. A very impressive and fresh Martha note on the cusp of AU and a grade infrequently available.



1318P. \$1, 1896. Fr. 224. Handsome EF/VF, towards Choice for the grade. Two vertical folds, far more visible from the back. A pleasing Educational note.



1319P. \$1, 1896. Fr. 224. Appearance of VF, some pinholes at either end yet it presents in an attractive fashion.

Please double check your bid sheet for errors on lot numbers & bids!

1320. \$1, 1899, Fr. 226a, VF-EF, three hard vertical folds; \$2, 1899, Fr. 249, Fine+ by wear but washed and small repair above portrait and **Legal Tender**, \$2, 1917, Fr. 60, VF+, bends and faint wrinkling yet pleasing. 3 notes.

1321. \$1, 1899. Black Eagle Quintet, includes Fr. 228, VG; Fr. 232(2) avg Fine, both with gift pen notation circa 1916 on backs; Fr. 233, about VF, slight chipping at top margin and traces of rust on verso plus Fr. 236, VG, minor soiling on back. 5 notes.



1322P. \$1, 1899. Fr. 232. CGA EF45 Original Paper Quality. Fresh and sharp for the grade.

1323. \$1, 1899. Fr. 236(2), one EF-AU, mild tri-fold vertical bends to the first keep it from a higher grade, the second note EF with cpl tiny pinholes, otherwise pleasing. 2 notes.

1324. \$1, 1923, Fr. 237(4) and Fr. 238(2). EF to AU, It vertical bends but nice paper and color. 6 notes.

1325. \$1, 1923, Fr. 237(4) and Fr. 238(2). Avg VF-EF, some with more prominent bends than others. 6 notes.

1326. \$1, 1923, Fr. 237(6) and Fr. 238(3). VG to VG-Fine, fairly typical for the grade and pleasing. 9 notes.

1327. \$1, 1923, Fr. 237(9) and Fr. 238(7). Good-VG to VF, avg VG by wear but most with minor faults, cpl more severe yet largely a presentable lower grade circ grouping. 16 notes.

1328. \$1, 1923. Fr. 238(2). PCGS Choice New 64 and a raw example in similar condition. 2 notes.



1329P. \$2, 1891. Fr. 245. PMG VF25 minor repairs noted, expertly executed and very well-concealed.



1330P. \$2, 1896. Fr. 248. PMG VF25. A very presentable middle grade Educational deuce with solid margins.

A 17.5% Buyer's Premium is in effect and will be added to all invoices



1331P. \$5, 1896. Fr. 268. PMG VF30 net, repaired. A very bright and crisp note with the initial visual impact of EF, a nicely done repair conserves this beautiful Educational Series Five.



1332P. \$5, 1899. Fr. 275. PMG VF30. A desirable and bright Chief note.



1333P. \$5, 1923. Fr. 282. PMG AU53 with comment stating foreign substance, although not easily recognizable or identifiable to the naked eye, tight bottom margin. An otherwise fresh, Itly circulated Lincoln Porthole note.



1334P. \$10, 1891. Fr. 299. PMG VF20. The popular tombstone note.

1335. **Low Grade Large Size Silver Certificates & More.** Includes: **Silver Certificates** \$1, 1886, Fr. 217, AG-G, pinholes, small repairs and perimeter voids/chipping; 1891, Fr. 222, Good, mostly solid, small faults; 1896, Fr. 224, appearance near G-VG, chips/voids/repairs, pinholes & toning along with \$1 and \$2, 1899, Fr. 236 and Fr. 256, the first with small internal splits and voids, dark borders/soil; the second with minor chipping. Also, **Legal Tender**, \$1, 1880, Fr. 30, once split into quarters & taped, toned, pinholes at corners. Still a viable yet well-circulated group of entry level collector notes. 6 notes.

Federal Reserve Notes

1336. \$1, 1918. Fr. 728. EF.



1337P. \$5, 1914 Red Seal. Fr. 838. Attractive VF-EF.

1338. \$5, 1914 Blue Seal, Fr. 855, AU/EF, presents very nicely from the face; Fr. 871, toned Fine+, cpl small stains and Fr. 876, Fine-VF. Also, \$10 and \$20, 1914, Fr. 930 and Fr. 988, both Fine-VF. 5 notes.

1339. \$5, 1914, Fr. 871a, VF-EF; \$10, 1914, Fr. 919a, EF and \$20, 1914, Fr. 971, VF. Neat collector grade trio. 3 notes.



1340P. \$50, 1914. Fr. 1050. PCGS EF40 with broad margins and legitimate claims to AU.



1341P. \$100, 1914. Fr. 1088. PCGS EF45, crisp and fresh with initial impact of an even higher grade.

Gold Certificates



1342P. \$10, 1922. Fr. 1173. PMG AU55 EPQ. A very pretty example giving the impression of new.



1343P. \$20, 1882. Fr. 1178. Appearance of VF with nice color, horizontal paper scuff/touch up across portrait area – otherwise pleasing.



1344P. \$20, 1922. Fr. 1187. PMG Choice EF45 EPQ. A vibrant example that truly looks AU.

1345. \$20, 1922. Fr. 1187. VG+/VG.



1346P. \$50, 1882. Fr. 1193. aVF from a standpoint of wear, some pinholes internal seps/splits and a couple repairs. Still very presentable and difficult to acquire.



1347P. \$50, 1922. Fr. 1200. PMG VF30, minor repairs noted on holder. Tough denomination.



1348P. \$100, 1882. Fr. 1214. PMG VF25, couple tiny pinholes noted for accuracy not mentioned by PMG, the back presenting a tad soft for the grade.



1349P \$100, 1922. Fr. 1215. PMG VF35. Visually at least a full grade better with nice embossing and color.



1350P. \$10,000, 1900. Fr. 1225h. A seldom offered signature pairing with the added bonus of the note being Uncancelled. Appearance of aEF to EF, cpl singed corners from the legendary DC fire provide both credibility and presence to the note, overall nice with transfer endorsement verso. An always popular and impressive high denom issue as well as an affordable trophy note. Housed in an oversized Capital Plastics display holder.

National Currency

Illinois



1351P. Carrollton. The Greene County National Bank. \$5, Series 1875 Fr. 404. Ch #2390. PMG Choice VF35 EPQ, presents as full EF with vivid color.

Maine



1352P. Belfast. Belfast National Bank. Lazy \$2, Original Series. Fr. 387a. Ch #840. PCGS EF40 and handsome. A condition rarity for the state and bank. Desirable to collectors of the Lazy Deuce series and Maine Specialists both. Worthy of a strong bid, this example eclipses the Nate Smith specimen by 15 points, likely at or near the top of the census.

Massachusetts



1353P. Boston. The National Shawmut Bank. \$5, Series 1882 Brown Back. Fr. 477. Ch #5155. PCGS EF45 PPQ with deeply hammered embossing and perfect, vivid color, seemingly undergraded and looks nearly new. A super Boston Brown Back fiver!

Michigan



1354P. **Algonac.** The First National Bank of Algonac. \$5 Series 1929 Type 1. Ch. #12944. Nice VF. A rare issue from this sought after St. Clair County Bank.



1355P. **Detroit.** First National Bank in Detroit. \$5, 1902 Plain Back, Fr. 605. Ch. #10527. PMG Gem Unc 66 with comment by PMG as Great Embossing & Color. Clearly a top-pop example from an original cut sheet, noted by the consignor as having provenance in the one-time holdings of both legendary Michigan numismatists Max Brail and Albert Grinnell. A cool note!

1356. **Hartford.** The Olney National Bank of Hartford. \$5 Series 1929 Type 1. Ch. #9854. Initial appearance of VF-EF or better from the face, cpl folds and ruffling on one end with lt soil only visible from the back.



1357P. - -. \$10 Series 1929 Type 1. Ch. #9854. Bright and fresh Unc, virtually Choice. Nearly if not the finest known.



1358P. - -. As preceding lot except Choice AU-Unc with only the faintest hint of a vertical bend at center. General appearance of Unc.

1359. - -. As preceding lot except Choice AU-Unc, tiny bump at bottom margin and faint central vertical bend. Looks Unc.

1360. - -. \$20 Series 1929 Type 1. Ch. #9854. Choice VF/VF, presents very nicely from the face with the look of EF.

Be sure to place your bids early, tie bids are always awarded to the earliest Bidder!



1361P. **Marine City.** The Liberty National Bank of Marine City. \$5 Series 1902 ND Fr. 606. Ch. #(M)11260. Fine, one tiny pinhole and some toning on the reverse.

1362. - -. \$5 Series 1929 Type 1. Ch. #11260. VG, small internal sep/split, tiny ink mark on verso.



1363P. **Port Huron.** First National Exchange Bank of Port Huron. \$10 Series 1882 Brown Back Fr. 484. Ch. #4446. Strong Fine-VF with bold color for the grade, slightly irregular top and bottom borders, a few small random ink marks visible from the back only. One of only a minimal group of reported examples.



1364P. - -. \$10 Series 1882 Date Back Blue Seal, Fr. 539. Ch. #(M)4446. VG, cpl small pinholes, soiling, minor chipping at top and bottom margins, completely faded sigs or appears to be unsigned. Very Scarce.



1365P. - -. \$10 Series 1902 ND Fr. 627. Ch. #(M)4446. Choice VF-EF with purple rubber stamped sigs. Some ruffling and handling, but colorful and pleasing.

NUMISMATIC AUCTIONS LLC
PO Box 22026
LANSING, MI 48909
517-394-4443



1366P. - First National Bank & Trust Company of Port Huron. \$10 Series 1902 ND Fr. 627. Ch. #4446. A spectacular Serial Number 1A note! AU to Virtually Unc and a vividly embossed, a fresh and colorful trophy note worthy of the finest collection.



1367P. - First National Bank in Port Huron. \$10 Series 1902 ND Fr. 627. Ch. #(M)4446. VF or slightly better, cpl hard folds, appears to be unsigned. Nice, yet another variation on the name and notation for this Charter.



1368P. - First National Bank & Trust Company of Port Huron. \$20 Series 1902 ND Fr. 653. Ch. #4446. VF to nearly EF, uneven bottom margin and a slightly scarcer denomination.

**Lot 1369 needs more room...
See this awesome lot on the next page...**



1370P. - \$10 Series 1929 Type 1. Ch. #4446. Virtually Unc, cpl very slightly bumped corners yet otherwise very nice. Tough grade for this issue and bank title.

1371. - \$10 and \$20 Series 1929 Type 1. Both Ch. #4446. Avg Fine-VF. 2 notes.

1372. - \$10 and \$20 Series 1929 Type 1. Ch. #4446. Avg. Fine-VF. Accompanied by an original passbook saving ledger and a similarly titled unused counter check, both with very minor condition issues - banknotes pleasing. Neat lot. 2 notes + bank ephemera.

**P Denotes a lot that is Photographed,
Images may be enlarged or reduced in size**

1373. - \$10(2) and \$20 Series 1929 Type 1. Ch. #4446. Avg Fine-VF, the first with some toning on verso, the last with staple piercing in the portrait area. 3 notes.



1374P. - First National Trust & Savings Bank of Port Huron \$20 Original S/N Run and Historical Archive. \$20 Series 1929 Type 1. Ch. #4446. A fantastic intact group of six consecutive notes S/N B000621A to B000626A. Avg fresh original Unc to Choice CU, cpl with faint teller handling marks, but otherwise select quality and seldom seen in multiples such as this. Accompanying the six notes are passbook savings ledgers(4) with embossed leather covers bearing the bank façade along with letters(2) imprinted PSE, advertising pieces(2) and an unused counter check - all with the same fourth variation title of this St. Clair County Bank. A historic & unique vintage archive worthy of a premium bid! 6 notes + bank ephemera.



1375P. **Early Ephemera Ensemble of John Miller & Co. and First National Bank of Port Huron.** Includes John Miller & Co. Bankers 10 Cents, Aug. 25, 1862, S/N 13(?), signed by Cyrus Miles, VG-Fine along with John Miller & Co. Bank Checks, circa 1868-1869(4) with revenue stamps and punch cancelled, otherwise Choice VF-EF and an early **First National Bank of Port Huron** imprinted PSE Postcard receipt of 12/9/1880, VF. Miller was eventually to become part of the First National Bank of Port Huron, a very historic group of early Port Huron and St. Clair County banking items. 6 items.



1369P. - - Rare Port Huron \$10-\$10-\$10-\$20 Series 1902 ND Fr. 627 & 653 Original Uncut Sheet. Ch. #4446. AU from a standpoint of wear with complete selvage as made; old folds between notes and into the lower printed regions of the first two notes of the sheet. A few other faint bends, not detracting and the number "66" very lightly penciled at top margin. Vibrant blue seals, Charter and Serial Numbers, strong embossing and mostly white paper with hints of toning primarily at the folds. Reportedly one of only two known surviving sheets according to Bill Herzog's census. The only other confirmed example being a higher serial numbered specimen, appearing as Lot 2146 in a sale conducted on May 19-20, 2000 by the now defunct firm Currency Auctions of America. Uncut Large Size National Sheets are very rare on Michigan, even more so on St. Clair County Banks. A unique opportunity for the specialist and worthy of a premium bid! One of the centerpieces of the Jack Lavis collection and another trophy acquisition for any Michigan Paper collector.

1376. **Port Huron, Michigan Banking History Ephemera Assortment.** Features Exchange Office of J.J. Boyce & Co., Check, Nov. 1, 1876; The Commercial Bank – Port Huron, MI, Check, Oct. 16, 1903 and Victorian era ad calendar board or ad card (minus contents), plus a Port Huron, MI Postal Savings \$1 Note, 1934 and a St. Clair County Savings Bank WWII preparedness ad booklet, ND. Avg. VF-EF. 5 items.



1377P. **Richmond.** The First National Bank of Richmond. \$10 Series 1902 ND Fr. 632. Ch. #10742. Fine-VF.

1378. **Romeo.** The Citizens National Bank of Romeo. \$10 Series 1929 Type 1. Ch. #2186. VG-Fine by wear, multiple tiny pinholes/wormholes and scattered rust flakes and speckles. Very scarce and still presentable.



1379P. **St. Clair.** The First National Bank of St. Clair. \$1 Original Series Fr. 382. Ch. #1789. Appearance of VF, A few vertical folds and several areas of old dampstaining noted, yet nice color and impressions, a very rare example.



1380P. **Yale.** The First National Bank of Yale. \$10 Series 1902 ND Fr. 633. Ch. #5482. Choice EF-AU, cpl bends, tiny pinholes and faded sigs, but very nice initial appearance of AU-Unc.



1381P. - - \$10 Series 1929 Type 1. Ch. #5482. VF and pleasing for the grade. A difficult town on Small Size National issues.

Call Us For A Consultation Today!

We can help you with your collection
either buying or selling

517-394-4443

New Hampshire



1382P. **Newport**. First National Bank. \$20, 1882 Brown Back, Fr. 494. Ch. #888 "Lucky Eights" the ultimate Good Luck Charter Number! PMG AU50, notated as stain lightened by PMG – otherwise appears virtually as new, an uneven top margin as originally cut. A really neat note and the conservation work is truly indiscernible, a remarkable piece that is an arms length CU.

New York

1383. **Rome**. The Central Bank of Rome. \$10 Original Series Fantasy/Facsimile Study note, small red seal. Good or better yet a few voids at right end and chipping at edge. An important reference piece for the collector and affordable space filler. Inspection recommended.

Wisconsin



1384P. **Manitowoc**. National Bank of Manitowoc. \$10, 1882 Brown Back, Fr. 487. Ch. #4975. PMG Choice VF35, looks fully EF and wonderful condition on this important harbor town issue. Brown Backs on Wisconsin are seldom encountered.

Small Size Type Notes

Legal Tender

1385. \$2, 1928-G(2), both pleasing AU-Unc along with circulated examples of 1928(2), 1928-C, 1928-D(12), 1928-E, 1928-F(10) and 1928-G(8), VG to Fine-VF. 35 notes.
1386. \$2, 1953-A(17), 1953-B(6), 1953-C, 1963(10) and 1963-A(4), avg AU-Unc to CU. Also, additional lesser grade circulated 1953(26), 1953-A(36), 1953-B(17), 1953-C(6) and 1963(44), Fine-VF to AU. 167 notes.
1387. \$5, 1928, fresh aUnc-Unc; 1928-E(2), toned Unc and AU; 1928-F(2), 1953, 1953-A and 1953-B(5), VG to EF along with 1963, AU-Unc(4) and mixed grades(52), VG to EF-AU. 68 notes.

Silver Certificates

1388. \$1, 1928(2), EF-AU and EF, the second with lt soil on verso; 1928-A(2), AU-Unc and EF+; 1928-B, VF-EF and 1934(2), Choice AU-Unc and AU. Nice Funny Back lot of aces. 7 notes.
1389. \$1, 1928-A(9), 1928-B(6) and 1934(11). Avg VG to VF, a few lesser grade, problematic or dark – others all respectable collector grade Funny Back examples. 26 notes.
1390. \$1, 1935, 1935-A(15), 1935-B(3), 1935-C(8), 1935-D(20), 1935-E(69), 1935-F(26), 1935-G(14) and 1935-H. VG to AU, mostly F-VF or better with many nice EF-AU grades present. 157 notes. 91

1391. \$1, 1935-A(3), 1935-C(3), 1935-D(7), 1935-E(31), 1935-G(4) and 1935-H. AU to CU, mostly fresh AU-Unc to CU in appearance. 49 notes.
1392. \$1, 1957(34), 1957-A(25), 1957-B(8) and 1957-B Star, avg pleasing AU-CU along with circulated examples of 1957(53), 1957-A(29) and 1957-B(49), F-VF to EF-AU. 199 notes.
1393. \$5, 1934-A(2), AU; 1934-C(6), 1934-D(4) and 1953 plus \$10, 1953-A, avg pleasing AU-CU. Also, lesser grade circulated \$5, 1934, 1934-A(3), 1934-C, 1934-D(14), 1953(8), 1953-A(12) and 1953-B(4) plus \$10, 1934, mixed grades VG to EF-AU, cpl with problems, others nice. Viewing advised. 58 notes.

Federal Reserve Notes

1394. \$1, 1963(22), 1963-A(14), 1963-B(85), 1969-C, 1969-D, 1974(3), 1977(43), 1977-A, 1981, 1981-A(2), 1988-A(23), 1993(6), 1995(12), 1999(53), 2001(60), 2003(13) and 2003-A. Some sequential runs, stars, radars or repeater S/N examples present. Mostly AU-CU, a few circs, a few later web notes. Also, \$2, 1976(2), CU and FDC issues with stamps(3) as well as \$5, 1950-A and 1977 Star note, both Chicago district, CU. An interesting modern accumulation of FRN issues from a diverse mix of districts. 348 notes.
1395. \$5, 1934-A; \$10, 1934(3), 1934-A(4) and 1934-C plus \$20, 1934(2) and 1934-A(4). Fine to EF, mostly VF to VF-EF, cpl with minor problems, still collectible grades. 15 notes.
1396. \$20, 1928 Atlanta(3), VF-EF; 1934-A(3), 1934-B(3) with one S/N pair in sequence and 1934-D, mostly EF to AU; \$50, 1934 and \$100, 1934 and 1934-C, VF to VF-EF. Primarily Chicago district unless noted. Pleasing group. 13 notes.



1397P. \$500, 1934. Fr. 2201-G. PCGS AU50, nice collector grade high denomination small size example.



1398P. \$1000, 1928. Fr. 2210-G. PMG AU55 and very appealing for this first year small size Thousand.

World War II Emergency Notes

1399. \$1, 1935-A Hawaii(5), avg Fine to F-VF along with \$10(2) and \$20, 1934-A Hawaii, avg VG with rust spots, stains or typical soil. 8 notes.
1400. \$1, 1935-A Hawaii(11), avg G-VG to VG with typical soil and toning along with lesser grade, problematic examples(6), these exhibit stains/voids/tape repair and the like. 17 notes.
1401. \$10, 1934-A North Africa. Choice AU-Unc, cpl lt smudges and slight paper wave, otherwise nice.

Please double check your bid sheet for errors on lot numbers & bids!

1402. \$10, 1934-A North Africa(6), avg VG to VG-Fine along with \$1, 1935-A North Africa(3), AG to VG, one tape repaired, others with small faults. Also, \$10, 1929, St. Louis, VG, chips at bottom. 10 notes.

Gold Certificates

1403. \$10, 1928. Fr. 2400, Choice EF-AU and \$20, 1928, Fr. 2402, VF+. 2 notes.



- 1404P. \$50, 1928. Fr. 2404. PMG Choice VF35, looks slightly better.



- 1405P. \$100, 1928. Fr. 2405. PMG Choice VF35, a long horizontal central bend. Tough denom and always sought after.

Error Notes

1406. \$10, 1974, Stunning full offset front to back error, PMG AU55 EPQ and \$1, 2006, partial offset back to front error, PMG Gem Unc 66 EPQ. Nice pair. 2 notes.



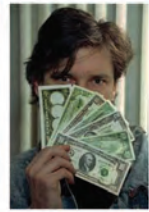
- 1407P. \$20, 1974. Bold full offset front to back error. PMG Gem Unc 65 EPQ. An exquisite error note in Gem condition.

1408. \$50, 1981-A. Dramatic full offset back to face error, back slightly off-center. Sharp VF-EF, unusual and rarely seen on this denom – especially one that reached circulation.

1409. **Collector Grade Ensemble of Diverse Error Notes.** Features Silver Certificate \$1, 1935-E, printed diagonal gutter, Fine; 1957(4), off-center cuts, AU-Unc and 1957-B, trace offset, EF; FRN \$1, 1977-A, 1981-A and 1988-A plus \$2, 1976, varied cutting and ink errors, VF-EF along with \$5, 1950-A, Seal and S/N shifted and 1985, major ink smear on back, avg VF, vertical folds, neat. 12 notes.



Currency Art



- 1410P. **Currency Art - Boggs, J.S.G., American Artist (1955-2017). Brew House Rent Transaction, Suite No. 5 “October Rent (\$500)” 1991.** Mixed Media Completed Transaction with Change and Receipt, ancillary materials enclosed, 20.5 x 24.5 x .3.25 inches. This large framed piece features a now legendary Boggs \$500 banknote highlighted by his portrait of “WILLIE” with the serial numbers in green of M15069105L and R20101991B along with the change of \$50 Federal Reserve Note Serial No. M15069105L with a whimsical drawing of a boat on the back. Framed with these two notes is the original receipt signed by the landlord, brass numeral “5”, bottle cap, Lipton tea wrapper, real estate business card, portion of the October calendar and the packaging for the brass number. Signed by the late artist. This is a storied and well-documented, early and complete transaction as performed by the artist in his heyday. This piece has a history in Swiss and other European art exhibitions and provenance from our November 30, 2015 Auction Sale #58 as lot 624 where it realized \$16,100 with the buyer premium. An extraordinary display piece and worthy of the finest modern art collection! Complete Boggs transactions, especially using such a high denomination note, are highly sought after and extremely difficult to come by. His global presence as a controversial artist coupled with his colorful history and tragic end add to the lure of this piece. Since his passing in 2017 pieces seldom come into the marketplace. Excellent condition as framed by the artist and ready for display by the proud winning bidder! (\$17,500-20,000)

Depression Scrip

1411. **Intriguing Michigan Depression Scrip Ensemble.** Features City of Detroit Specimen/Proof and issued \$1 denominations of 1933, both Unc along with an all different selection of varied types and denominations from Hamtramck(3), Lincoln Park(2) and Mecosta County(2) plus similar Board of Education and Public School issues of Grand Rapids and Holland circa 1933-1934. EF to Unc and a pleasing as well as interesting collector grouping. 11 notes. (\$200-300)

Military Payment Certificates

1412. **Diverse MPC Ensemble & More.** Features a broad range of European and Asian Allied Military Payment Certificates both WWII and post WWII era(27), avg EF to Choice Unc with a terrific range of issues, denoms and types including France, Germany, Italy, Japan and beyond along with a neat trio of **Georgia**, Civil War Era Obsoletes from **Midgeville**(2) and **Augusta**, avg nice EF-AU to virtually Unc, one \$4 with the typical overprinting on back over the top of a prior Unissued Remainder sheet of fractional notes of the same locale. 30 notes. (\$200-300)

Miscellaneous Lots

1413. **Large & Diverse Small Size Singles & Sheets Assortment.** Features Silver Certificate \$1, 1928-A Funnyback, AU; \$10 North Africa, 1934-A, VF-EF and \$50 First Wayne N.B. of Detroit, 1929, VG partial teller stamp on face. Also, Star Note common \$1 SC & FRN, \$2 Legal along with FRN \$5(2), \$10, \$20, \$50(2) and \$100, mixed series 1953-2013, primarily moderns, EF to CU as well as FRN Uncut Sheets, \$5, 32 subject, 1995 Atlanta, CU in tube and a common modern \$20 Star 4 subject, CU. Additionally, lesser \$1 SC(8), \$2(4) and \$5 FRN commons, avg circ to Unc. 62 notes.

1414. **Short Snorters, Autographed, Counterstamped & Novelty Dollar Bill Selection.** Includes WWII Short Snorters on Hawaii & North Africa Emergency Notes plus others on Silver Certificates(2); Vintage Musician autographed FRN, 1963-A, signed 9/24/68 by Marlena Shaw and others; Political and Chain Letter types(2), Support Your Local Militia(3) and Words of Mass Destruction(2) rubberstamped/countermarked notes along with rubberstamped or marked "Mutilated" or damaged notes(3) as well as a crude 1977 Xerox copy note. Avg circ to VF. An interesting group of curio notes, 16 pieces in all.

Paper Americana and Ephemera Lots

1415. **Diverse Michigan Paper Ephemera Ensemble.** Includes early ornate checks from Lake Superior & Ishpeming Railway Co., First National Bank of Romeo and Trimountain Mining Co. of Houghton; an early Lake Shore and Michigan Southern Railroad Line Large Size advertising note plus later 1960's "onion skin paper" banking ad notes(2); early and vintage Railway tickets/stubs from Detroit(11) and Flint & Pere Marquette, wooden nickel event notes/flats(4) and other items(2). Avg VF to AU-Unc. Neat lot. 23 items. (\$150)
1416. **Widely Varied Accumulation of Mixed States & Nations Paper Ephemera.** Features Columbian Expo ABNC(4) and other(2) tickets, plus other ticket stubs only(4) along with Caxton ticket envelope and School Ribbon from the W.C.E.; Vintage political RNC and DNC tickets, the latter torn; 19th Century School Shares Voucher and a Wells Fargo stamped grain weigh-in ticket; mixed 19th Century checks(9), U.S. Postal note and misc(2); various souvenir event wood flats and scrip(6); 1960's to modern novelty notes(8) plus Canadian items - Railroad Checks(3) & other; \$5 Zimmerman Banknote fragment, Canadian Tire(9) and other modern coupon notes(8) along with a Russian Bond, circa 1928 plus Cuban(2) and Mexican scrip. Avg VF to AU-Unc, cpl problematic. A fun group of paper ephemera! Viewing strongly advised. 67 items (\$150+)

Postal History - Michigan Territorial Period



- 1417P. **Important Michigan Territorial Period Fort Gratiot Lighthouse Relocation Letter. DETROIT MIC.T./JAN 2(1829).** Fine red double oval date stamp with red manuscript "25" rate folded cover containing a one page letter from Truman Beecher of the Collector's Office in Detroit, datelined Dec. 30th, 1828 to Colonel John McNeil, U.S. Army, Hillsborough, NH – seeking to purchase land held by him to construct a new lighthouse near Fort Gratiot. This was to become what is now the oldest lighthouse in Michigan, expanded in the 1860's to its current height of 86 feet and later automated in 1933. A necessary component of the area, guiding merchant ships from Lake Huron through the dangerous narrows of the St. Clair River. Nice VF-EF overall, typical folds from its original construct with nice paper quality and wax seal. Historic, topical and desirable – accompanied by a color copy facsimile suitable for framing and/or transcription use. A unique piece of history from Michigan's earliest lighthouse! (\$200-300) 93

**Exonumia by Category
Civil War Relics**



- 1418P. Rare Michigan Civil War Dog Tag, In The War of Union 1861, 2 & 3 & 4, AE, 29mm, stamped "A. KING" on reverse. Attributed by the family as belonging to Andrew King of Detroit, MI who mustered in at age 26 into Company H of the 1st Michigan Cavalry. Bold VF by wear, holed for suspension and with original brown patina, cpl edge bumps or old marks – otherwise nice. Great Michigan Civil War Relic, worthy of further research! (\$400-600)

**Civil War Tokens
Merchant Store Cards
Indiana**

1419. **Kendallville.** Jones & Moshers Bakery & Provision Store, 1864. 500K-la R6. EF, trace verdigris. (\$100+)

Michigan

1420. **Addison.** Smith Brothers Dry Goods, 1863, 3A-la R4, cld EF; **Albion.** Albion Commercial College, 1863, 25A-1a R3(2), cld EF and F-VF, verdigris along with Comstock & Bro. Druggists, 1863, 25B-1a R6, corroded Fine and **Hudson.** Tubbs & Spear Grocers, 1863, 480G-1a R5, sharp EF-AU. Neat local ensemble. 5 tokens. (\$150)
1421. **Adrian.** Blackman & Dibble Druggists, 5A-1a R4; Buck & Farrar Hardware, 5B-2a R4; J.A. Castle Grocer, 5C-3a and 5C-4a R3 plus Remington & Bennett Druggists & Grocers, 5D-1a R8 and 5D-4a R6. All 1863 dated issues. Avg VF to VF-EF. 6 tokens. (\$150-200)
1422. **Almont.** D.W. Richardson Drugs & Books, 1863, 35A-2a R4, pleasing AU; **Atlas.** F.J. & J. Palmer's Woolen Factory, 1863, 45A-3a R3, reverse sub-variety, VF-EF, It old cleaning and **Constantine.** E.H. Sheldon Hardware, 1863, 190A-1a R2, EF. 3 tokens. (\$150)
1423. **Ann Arbor.** Philip Bach Dry Goods, 1863, 40A-2a R3, AU-Unc; Dean & Co. House Furnishing Goods, 1863, 40B-1a R3, VF marks & old cleaning; 40B-2a R5, EF slight indent and 40B-3b, VF, old stains and cpl scs plus Stebbins & Wilson Druggists, 40D-1a and 40D-3a R2 pair AU and EF-AU both nice. 6 tokens. (\$150-175)
1424. **Charlotte.** C.J. Piper Groceries, Boots & Shoes, 160D-1a R5, EF-AU and 160D-1b R7, EF, Itly cld, Also, **Eaton Rapids.** Frost & Daniels Dry Goods, 300C-1a R5, VF; P. Leonard Dry Goods, 300D-1b R8, AU It old cleaning, now colorful and Wm. F. Stirling Dry Goods, 300F-1a R3, EF. Neat Eaton County grouping. 5 tokens. (\$150-200)
1425. **Chelsea.** Congdon Brothers Dry Goods, Groceries & Hardware, ND. 175A-2a R6. EF or nearly so. Very scarce town. (\$150-200)
1426. **Clarkston.** M.H. Clark Hardware, 180A-4a R6 and R. & J. T. Peter Druggists, 180B-1a R7, both VF-EF; **Pontiac.** Morris & Messinger Hdw & Stoves, 770B-1b&2b R4 & R8, avg cld EF, spots plus Fox & Smith Plaster, 1863, 770A-2a, VF-EF. Also, **Ypsilanti.** E. Hewitt & Bro Dry Goods, 1863, 960A-8a R5(2), VF and damaged Fine along with Showerman & Bro., 1863, 960B-2a R4, VF/F trace rust and 960B-4a R6, VF+. Neat regional ensemble. 9 tokens. (\$150-200)

1427. **Corunna**, G.W. Goodell Drugs, 1863, 200B-3a R4, VF-EF It mks and 200B-4a R4, VF; **Flint**, Giles Bishop Druggists, 320A-1b R2, AU and Clark's Drugs, 1863, 320B-1a R5 VF-EF along with **Owasso** spelling error, C.E. Shattuck Brick Drain Tile, 735A-1a R5, VF, tiny rn. 5 tokens. (\$150-200)
1428. **Detroit**. Collector Grade Better Merchant Selection of 1863. Features R7 to R9 225AF-3a, 225AG-1a(2), 225AY-1a, 225BW-1a, 225CK-3a, 225CM-1a(2), 225L-3a and 225Z-1a. VG to VF-EF, avg Fine-VF, cpl problematic. 10 tokens. (\$150-250)
1429. -. Higby & Stearns Druggists, 1863, 225AL-1a R4, EF, small spot reverse along with Patriotic Drug & Medicinal topical(5), all different, VF-EF to EF-AU. Neat Pharma related ensemble in nicer circ grades. 6 tokens. (\$150+)
1430. **Diverse Detroit Merchant Token Starter Collection**. A widely varied group of virtually all different Bakers, Butchers, Grocers, Hotels, Saloons and more – R2 to R6 variants. G-VG to EF, mostly F-VF, some cld or dark, a few problematic but mostly pleasing collector grade circulated examples. Inspection recommended. 28 tokens. (\$400-500)
1431. **East Saginaw**. A. Schmitz Iron, Nails, Stoves, Crockery & Paints, 280E-1a R5, nice chocolate brown aUnc-Unc – neat plow design along with N.W. Clark & Co. Merchants, 1863(2), both 280B-1a R7, avg VF, one corroded ltly. 3 tokens. (\$150+)
1432. **Grand Haven**. H Brouwer Dry Goods, Groceries, Boots & Shoes, 1863, 360A-3a R6, Choice EF-AU, It edge mark and G.V. Schelven Groceries & Candies, 1863, 360C-1a R6, EF-AU. Nice pair. 2 tokens. (\$150-200)
1433. **Grand Rapids**. Foster & Metcalf Plumbing, 1861, 370C-1a R8, oxidized VF-EF, slightly dark; Goodrich & Gay, 1863, 370D-1b R2, VF-EF cld; C. Kusterer City Brewery, 370F-1a, Choice EF and scarce; J.W. Peirce, 1861 and ND(2), 370H-1b, 2b & 4a, all R2, EF to AU and L.H. Randall, 1862, 370J-1b R3(2), cld AU and VF, It scs. 8 tokens. (\$200-300)
1434. **Hastings**, D.C. Hawley Groceries, 1863, 440A-3a R5, Sharp EF and **Ionina**, James Kennedy Exch. Ins & Collection, 1863, 495A-1a R2(2), avg VG-Fine, problems; 495A-2a R4, Sharp EF and F. Sloan Stoves & Hdw, 1863, 495B-1a R4, VF, 5 tokens. (\$125-150)
1435. **Hillsdale**. A. Gleason Diesinker, 1863, 450G-1a R2, EF/AU along with 450G-7a R2, VF and 450G-7b R6, EF–both cld; C.E. Mott & Co. Dry Goods & Carpeting, 1861, 450K-1a R4, Fine-VF, It pitting plus Mott Bro Druggists, 450L-1a R5, VF and 450L-3a, EF-AU. Neat group. 6 tokens. (\$150-200)
1436. **Hudson**. Baker & Brown Dry Goods & Groceries, 480A-2a R7, aEF, a few very faint old pin scs rev along with Green & Wardsworth Livery, 1863, 480D-1a R6, F-VF, old damage. 2 tokens. (\$150+)
1437. **Jackson**. Wm. Jackson Grocer, 1863, 525C-3a R3, EF old cleaning; 525C-5a R5, VF+ and 525C-9a R6, nearly EF, trace verdigris along with W. Jaxon, 1863 and 1864, 525D-2a & 525D-4a, both R3, VF to VF-EF, the first dark and porous. Also, **Lansing**, David Ekstein Grocer, 1863, 560A-2a R6, VF, a few old pin scs rev. 6 tokens. (\$150)
1438. **Lawton**, Fairbanks & Scriber Stoves & Hdw, 1863, 570A-2a R6, aEF; **Marshall**, L.H. Robinson Groceries, 1863, 610C-3a R7(2), EF and VF, cpl scs along with **Niles**, G.A. Colby Groceries, 700A-1a R5, F-VF and E.S. Parker Hats & Caps, 700C-3a R7, aVF, dark. Also, lesser grade and problematic issues from **Kalamazoo**(3) and **Mussey**(2). Interesting lot, viewing advised. 10 tokens. (\$150-200)
1439. **Manchester**, Van Duyn & Lynch Druggists & Grocers, 588A-1b R7, VF-EF, cpl It marks reverse and **Tecumseh**, C.S. Patterson Druggist, 1863, 920D-1a R4, VG+. Scarce local pairing of Pharmacists. 2 tokens. (\$150+)



- 1440P. **Maple Rapids**. Isaac Hewitt Dry Goods & Groceries, 1863. 595A-1a R9. Pleasing EF and always sought after, a classic Michigan Civil War Merchant Store Card Rarity! (\$1000-1500)
1441. **Morenci**. J.M. Page & Co. Hardware, 660A-1a R5(2), retoned EF and VF, mks along with Richards & Co. Dry Goods, 1863, 660B-1a R6(2), VF and cld Fine, residue. Also, **IN, Ligonier**(engraved Michigan), J. Pearce Druggist, 550G-3a R6, AU-Unc. 5 tokens. (\$150-200)
1442. **Pontiac**. A. Parker Druggist – French's Hair Restorative, 770C-1b R3, original EF. Always popular with medicine bottle motif. Nice. (\$150+)
1443. **Salina(Saline)**. Gallagher & Hess Druggists, 1863, 855A-1a R5, nice AU and 855A-3a R5, VF-EF It old bend yet sharp. Scarce town. 2 tokens. (\$150)

New York

1444. New York Merchant Token Selection. Features 140A-2a, ANACS MS64BN violet & blue tone; 630BQ-2A, NGC AU58BN; 630CH-1a, NGC MS63BN; 630CB-2a, NGC MS62BN & 890E-9b, MS64. An interesting NY grouping, cpl very nice! (\$150-200)

Ohio



- 1445P. **Cincinnati**. W.K. Lanphear, Die Sinker, 1863. 165CY-68a R-8. NGC MS65BN, hints of red. Rare issue and grade. (\$300-400)
1446. -. Peebles Groceries, 1863. 165EJ-8a R4. NGC MS64RB. Nice color. (\$100-150)



- 1447P. -. H.A. Ratterman, 1863. 165EQ-3b Reeded Edge R7. NGC MS64. (\$300-400)



- 1448P. -. John Ravy, Confectioner, 1863. 165ER-7a R6. NGC MS65RB, substantial red. (\$250-350)



1449P. -. Jacob Vogel, Butcher, 1863. 165GE-2a R4. NGC MS65RB. Nice. (\$200-250)

Miscellaneous States Store Card Tokens

1450. **Mixed States Merchant Store Card & Patriotic CWT Assortment.** Features Store Card issues from MI, NY(7), OH and WI(2) plus Patriotics(11). Nice group with cpl slightly better types present, VF to Unc, many AU-Unc, largely EF or better. Viewing advised. 22 tokens. (\$300-400)

Patriotics

1451. **Mint State Certified Patriotic Token Ensemble.** Features 138/434a, MS63BN; 163/352a, MS65BN; 168/311A, MS64BN; 237/423a, MS64BN and 240/337a, MS61BN. All in fresh NGC holders and pleasing luster, color and strike quality. Neat mix of types and die pairings. 5 tokens. (\$150-200)

1452. **Well Mixed Patriotic CWT Assortment.** Includes McClellan types, 138/255a, 138/434(2) and 140/394, sharp EF-AU to Choice AU along with a broad range of common types and R1 to R3 varieties with widely varied themes throughout. VG to AU-Unc mostly avg circ to VF-EF, some sporadic cleanings or problems. Viewing advised. 69 tokens. (\$500-750)

1453. -. Similar to preceding lot yet a different mix of types and a few slightly better varieties present. VG to EF-AU, some minor issues as typically encountered. Includes 42 largely different pieces plus clips/cuds(5) and mixed related novelties, etc(5). Inspection recommended. 52 items in all. (\$400-600)

Countermarked Coinage

1454. World's Columbian Exposition Countermarked Indian Cent, 1864 with 1893 No Stars c/m, Choice EF-AU and Shield Nickel, 1893 Stars c/m, VF-EF. 2 coins. (\$100-150)

Engraved Coinage

1455. 1876 "Potty Dollar" engraved in somewhat crude fashion on chamber pot. Host coin AG-Good. Rare and popular. (\$200+)



1456P. 1877 "Potty Dollar" engraved in slightly finer style than the preceding example on a chamber pot resembling a coffee cup with ribbon above. Host coin full rim Good-VG and toned, cpl old marks. Always sought after, accompanied by a seldom seen "Potty Dime", 1891, toned Fine/VF. 2 coins. (\$250-300)

Hard Times Tokens

1457. Liberty – Not One Cent, 1837, HT-47, NGC AU58BN and M.S. Baker & Moody, Hatters Token, Chicago, IL, M-III-4, ND(1853-1857), NGC MS64RB with handsome luster/color. 2 tokens. (\$200)



1458P. Half Cent Copper Token, 1837. HT-73. NGC MS63BN. Rare grade and fully original with nice color. (\$400-500)



1459P. Half Cent Copper Token, 1837. HT-73. NGC MS63BN. Another rare Mint State example of this popular issue. (\$400-500)

1460. Am I Not A Woman & A Sister, 1838, HT-81 and a related British Anti-Slavery Token – Am I Not A Man And A Brother, ND. Avg Fine with cpl typical minor impairments. Popular pairing. 2 tokens. (\$200-250)



1461P. Feuchtwanger Cent, 1837. HT-268(5H). Toned Ch AU and very appealing, luster in devices. (\$200-300)

1462. Feuchtwanger Cent, 1837. HT-268. NGC AU58, slate gray original color. (\$200-300)

Medals



1463P. **Rare Steam Coinage Press Medal of 1836.** February 22, 1836. Bronze, 28mm. Julian MT-20. The Rare date, under type visible and likely a set up strike with tiny centering mark reverse. EF. An important example - bearing the rarely available original date before the press broke down! Very seldom offered and an important opportunity. (\$3000-3500)

1464. **Neat 19th Century Medal Pairing.** New Jersey Agricultural Society Medal, ND. AE, 57mm, by Henning & Eymann. Allegoric figure with cornucopia, train, bee hive and farming tools; Rx: Awarded to T.W. and J. H. MULFORD for Express Wagon and Curl. Handsome brown Choice EF. Also, American Institute of New York Award Medal, 1892. AE, 51mm, by Lovett. Awarded to Easton Electric Co. for parts of dynamics in process of Construction-1892. Choice AU-Unc, retoning nicely with RB color. Interesting pair. 2 medals. (\$150-200)

1465. **Charles Barber Bronze Medal Trio.** Includes W.C.E. Liberty Head/Columbus Landing, 1892, Eglit-101, AE, 28mm, NGC MS65BN; Philadelphia - Spring Garden Institute Medal, ND(c.1885-1889), AE, 41mm Unawarded EF along with Abraham Lincoln/Broken Column Medalette, ND(20th Century Restrike) of Julian PR-38, AU-Unc. 3 medals. (\$150-200)



- 1466P. **Theodore Roosevelt Bas-Relief Large Bronze Wall Plaque, 1920.** Original Cast Bronze, 25.2 x 32.5cm, by James Earle Fraser. Wonderful Bas-Relief portrait of President Theodore Roosevelt facing right with three-line inscription below: "Aggressive Fighting For/The Right Is The Noblest/Sport The World Affords." Sculptor's signature and date at upper right. Choice condition and old time patina with the original "Decorator Art League" paper label on back and metal hanger. Lovely and ready for display. Impressive. (\$200-300)



- 1467P. -. Similar to preceding except without the paper label, quite possibly a later rendering of the issue. Virtually as made with handsome, somewhat glossy reddish-brown patina, small area of lt verdigris at lower right corner mentioned for accuracy. Beautiful for décor use and very attractive. (\$150-200)

1468. **Detroit A.N.A./C.N.A. Convention Medal Pair, 1962.** Silver and Bronze, 41mm. Nice Matte Unc in custom white Lucite holder of issue. Seldom available. (\$100+)

1469. **United States Annual Assay Commission Medal and Mint Director Autograph Pairing, 1977.** Official Assay Commission Medal in Pewter, Oval, 59 x 76mm. Martha Washington; Rx: First U.S. Mint. Uncirculated, accompanied by business card signed in presentation to Ed Young by Mary Brooks, Director of the Mint, 1969-1977. Neat pair of historic Mint items! (\$100-150)

Washington Medals



- 1470P. George Washington Civic Procession Medal – WM 2nd Restrike(c.1858). GW-130-R2. PCGS MS64, diagnostic die crack reverse. (\$250-300)

1471. George Washington Residence Medal(1st Obverse), White Metal, ND(c.1860). GW-304. PCGS Gold Shield MS63 and although not noted as such, it is a fully mirrored Prooflike. (\$150-200)

1472. George Washington Portrait Medalette – Paquet-1833 Jackson Die – 1st Obverse. GW-447, J-PR-28 Silver, ND(c.1862). PCGS SP45 with steel blue-gray toning, cpl tiny marks. (\$175-200)



- 1473P. George Washington Lovett's Headquarters Series(2nd Obverse) – Chad's Ford, Copper, ND(c.1862). GW-490. PCGS MS65BN. (\$200+)



- 1474P. George Washington Lovett's Mt. Vernon Tomb – Copper Mule, ND(c.1863). GW-521. PCGS MS64BN, embers of red glow in devices and this is the actual PCGS plate coin! (\$300+)

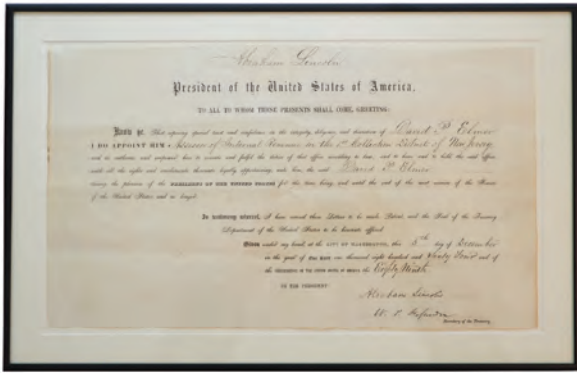


- 1475P. George Washington Lovett's Battle Series/Delphos Union School Medal-Second Obverse, WM, 1876. GW-901, Baker-416. PCGS Gold Shield MS62 (holed). The actual PCGS plate coin! (\$250+)

Lincoln Tokens & Medals

1476. **Abraham Lincoln Campaign Token.** Abraham Lincoln/Hannibal Hamlin Campaign Token, 1860. Ferrotypic style with brass outer ring. VF by wear if not better, but the central images and mica have been replaced in a modern repair. Still presents well for display and always popular. (\$150-200)

NUMISMATIC AUCTIONS LLC
PO Box 22026
LANSING, MI 48909
517-394-4443



Abraham Lincoln

1477P. **Abraham Lincoln Autographed Presidential Appointment Document.** Partially printed with hand written sections, document trimmed to 9 1/2 x 16 1/2" and archivally matted and framed to a slightly larger size. Appointment of David P. Elmer as Assessor of Internal Revenue in the First Collection District of New Jersey. Dated December 5, 1864, Washington D.C., bearing the boldly penned signatures of Lincoln and his countersigned officiant William P. Fessenden. EF overall and relatively untuned, a couple tiny inclusions along the outer edge and some light internal bends/folds, none impacting the signature area. The official seal impression is evident and clear, but largely lost is its original wax content. An outstanding opportunity for the Lincoln collector, as this document was signed while the Union Army pushed south during December of 1864 in an effort to conclude the Civil War. A seldom offered autograph from our legendary 16th President. (\$3000-5000)



1478P. **Abraham Lincoln Civil War Tokens.** Abraham Lincoln, 1864. Fuld 125/248a, nice EF and Fuld 128/290b, pleasing AU. Nice better grade pair. 2 tokens. (\$200-300)

1479. -. Abraham Lincoln, 1864. Fuld 127/248 and 128/289, avg Choice VF-EF along with an additional 128/289 pair, avg VF-EF, trace of lead adhesions at center of reverse on both, otherwise nice. 4 tokens. (\$200+)

1480. -. Abraham Lincoln, 1864. Fuld 127/248(2) and 128/289(2). VF to EF, cpl old cleanings and some faint old pin scs yet otherwise pleasing with nice sharp portraits. 4 tokens. (\$200+)



1481P. **Lincoln/Washington & Flags Medal, 1864.** WM, 28mm by William H. Key. Baker-235a. Prooflike Unc or virtually so, pierced for suspension as made but otherwise lovely. Very scarce. (\$250-300)



1482P. **Wonderful Large Victor D. Brenner Lincoln Plaque.** Abraham Lincoln Large Bronze Plaque, 1907. AE, 24 x 18cm, by Victor David Brenner(1871-1924), famed creator of the Lincoln Cent. This stunning bronze plaque with its original green marble base depicts the same bust of Lincoln facing right as was used on Brenner's 1909 Lincoln Cent, making this a favorite among collectors as such. EF with a typically encountered skilled repair to the original green marble backing mount, now reassembled and complete with its hinged bronze easel backing support leg intact for table top display - stamped S. Klaber & Co., Founders, NY. A lovely example which the consignor notes as being a very early specimen from the issue, exhibiting intricately stippled fields with original deep brown old-time patina. Sure attract some bidding activity! (\$1500-2000)



1483P. **Another Impressive Large Brenner Bronze Lincoln Plaque.** Similar to the preceding lot except this example no longer has the original green marble base or easel support leg. Otherwise Choice EF and spot free with pleasing tan to golden-brown color overall. Attractive. (\$500-750)



1484P. **Thomas Elder Issues.** Lincoln Gold Token, 1910. AV, 15mm. Emancipator and Martyr. As DeLorey-47. Possible restrrike, Brilliant Prooflike Unc. (\$300-400)



1485P. -. Lincoln Gold Token Pairing, 1910 and 1939. AV, 15mm. Both with A TOKEN reverse type as DeLorey-48 issues of 1927, yet both appear to be from re-engraved restrrike dies. Avg Brilliant Prooflike Unc. 2 pieces. (\$300-400)



1486P. -. Lincoln Gold Token, 1927. AV, 15mm. As DeLorey-48. Unc to Choice Unc. (\$200-300)



1487P. -. Lincoln Gold Token, 1927. AV, 15mm. As DeLorey-48. Unc, with auction ticket from the Litman, Sullivan & Dreyfuss Collection Sale at Presidential. (\$200-300)



1488P. -. Lincoln Gold and Aluminum Token Pairing, 1927. AV and Aluminum, 15mm. As DeLorey-48. Unc to Choice Unc. 2 pieces. (\$300-400)



1489P. -. Lincoln Gold Token So-Called Dollar, 1939. AV, 15mm. HK-493. Ltly hairlined AU. (\$200-300)

1490. -. Lincoln Gold Token So-Called Dollar, 1939. AV, 15mm. HK-493. Ltly clnd EF-AU. (\$200+)

Questions on a lot? Set up an appointment to view lots in the privacy of our offices today. Evenings & weekend times are available and lots can be viewed only prior to Auction Day. Lot viewing in person can give you a bidding advantage over those who do not view!



1491P. **Interesting Thomas Elder Lincoln Medal Quartet.** Features "Beloved Alike By Rich And Poor" Restrike Medals, ND, as DeLorey-58 in Brass, WM and Aluminum – all 39mm each, avg AU to AU-Unc along with Elder's Memorial Medal, ND, Uniface Die Trial in WM, 34mm, ltly toned Choice Unc. 4 medals. (\$300-400)

1492. **Enigmatic Lincoln Plaques & Bookend Assortment.** Features a large unbearded Lincoln "Malice Towards None..." Plaster Plaque, 1931, 13.5" diameter by WPA Artist Viola Stone(1872-1958), signed and dated on back, executed for State Representative Clyde Boyle of CA, EF, some minor chipping or rubbing to surface, integral suspension chain on back as made plus a pair of Cast Iron and/or Bronze alloy undated Portrait Wall Plaques, avg 11-12" diameter with nice age and patina along with a lesser grouping of mixed metal Portrait Plaques(4) and Bookend, undated, circa 1909-1940s in a variety of finishes, avg 6-8 inches in size, avg VF-EF. 8 items. (\$200-300)

1493. **Mostly Modern Popular Lincoln Medals & Plaquettes Ensemble.** Features a pair of the popular Abraham Lincoln/Victor D. Brenner MACO Small Bronze Art Plaques, c. 1971, 63 x 48mm; Metal Arts Co. Bronze Lincoln/Brenner/Mercury Medal, ND(c.1960's), 75mm, along with various U.S. Mint and other Lincoln Inauguration Medal reissues in Bronze, 3"(4) and 1 1/2"(2) as well as an additional 3" example that appears to be lead. Avg AU-Unc, lt rub to high points. 10 medals. (\$200-300)

Presidential & Political



1494P. William H. Harrison Campaign Medal, 1840. DeWitt-WHH-1840-55. Brass. NGC MS64, wonderful luster, loop intact as made. Tough grade and very nice! (\$200-300)

So-Called Dollars



1495P. Southwest Expedition – Pike's Peak, CO, 1906. HK-335. NGC PF66 with deeply mirrored fields and an exquisite strike. Rare grade. (\$1000-1500)

1496. Southwest Expedition – Pike’s Peak, CO, 1906. HK-335 and HK-338. Avg Unc details, nicely executed edge mount removals. 2 medals. (\$100-150)



- 1497P. Bryan Dollar, 1896. Tiffany & Co. HK-777, Zerbe-1. EF-AU, a few fine old hairline scs and lt old impairments. Still a very presentable example of this rare issue. (\$400-600)



- 1498P. Bryan Dollar, 1896. Tiffany & Co. HK-779, Zerbe-3. EF to EF-AU, some faint hairlines and barely notable wispy pin scs obv/reverse, visible when held at a certain angle. An affordable and seldom available Tiffany piece. (\$400-600)



- 1499P. Leshler Dollar, 1900. A.B. Bumstead, Type 2, Serial No. 734. HK-789, Zerbe-3, R5. PCGS Gold Shield AU55, rich original gunmetal/steel blue toning with nice eye appeal. Rare grade & type. (\$2500-2750)



- 1500P. Leshler Dollar, 1901. Geo. Mullen, Victor, Colo., Serial No. 1503. HK-795, Zerbe-9, R6. Toned EF-AU, couple small blunt indents, a few lt rbs/rms. Rare and desirable. (\$2500+)



- 1501P. Montana Dollar, 1933. HK-820. R5. NGC MS63 in an older holder, mostly white reflective luster. (\$400-500)

1502. Pedley-Ryan Dollar, 1933. Type III. HK-824. PCGS MS63, nice luster and originality grace this R6 variety. (\$250-300)



- 1503P. Pedley-Ryan Dollar, 1933. Type VII. HK-828. PCGS Gold Shield MS64. A handsome example of this R7 rarity at the very top of the condition spectrum available. (\$3500-4000)

1504. Continental Dollar - Bowers Restrike, 1776(1962). HK-854A. NGC MS66PL, lovely mirrors and scarce so nice. (\$200+)

Tokens & Medals

1505. **19th & 20th Century Bronze & Brass Token and Medallic Ensemble.** Features Brass Fantasy Round California Gold Charm “Dollar”, 1864, VF-EF; Half Eagle Spiel-Marke – II Stars/Compositions, ND, Brass Counter, NGC MS62; Connecticut Tercentenary Charter Oak Brass Medal, 1935, 32mm, NGC MS66 along with Boston Jubilee 350th Anniversary Medals, 1980, AE, 81mm, by the Paris Mint(4 pcs), Mint in box with COA’s along with a modern Uniface Brass Lincoln Portrait Medal, ND, 33mm, similar to the US Mint Portrait Medal yet with a different style of font in legend, Brilliant Unc. 9 pieces. (\$150-200)

1506. **Interesting Starter Collection of Prison Tokens.** Features Michigan tokens from Chippewa(4), Flint, Grass Lake(9), Huron Valley, Ionia(4), Jackson(15), Kinross(8), Marquette & Muskegon(15) along with others from Arkansas(4), Colorado, North Carolina(13), Brooklyn & Manhattan New York Issues, Rhode Island and South Dakota as well as a specialized group from the infamous Sing Sing Prison featuring 1, 5(3), 10(2), 25(4) and 50 Cent denominations plus fractional Commissary Scrip from MI and TX(2) and the hardcover reference book – **Prison Tokens and Medals of the United States** by Jerry Zara. An intriguing group, nice variety of denominations and types with some duplication. Avg circ to Unc. 91 tokens, 3 notes + 1 books. (\$200-300)

1507. **Risque, Transportation and Good For Token & Medal Accumulation.** Features Large Cents(7) and Flying Eagle Cent with the letter “E” engraved into a letter “U”, avg circ to Fine; Fantasy Brass Brothel Tokens(8) and other vintage risqué tokens/medals(3) along with Transportation tokens, mixed states(52) including Alaska and Hawaii plus Puerto Rico and Philippines issues and other(2) as well as Detroit Commercial Bar 12½c and Missant’s Café 5c Good Fors in Copper, both nice EF, balance of lot avg circ to Unc unless noted. 8 coins + 69 tokens & medals. (\$100-150)

Consignments Accepted for our Spring 2021 Public & Absentee Bid Auction

- We work regularly with banks, attorneys, museums and institutions as well as collectors and dealers - let us work for you
- Now more than ever we have buyers actively seeking fresh material from every corner of the Earth.
- We offer personal service, low commission rates and we'll help you sell all of your material, including your lesser value items, not just cherry-pick your holdings as many buyers and large firms do.
- Why sell your collection to just one dealer? Thousands of collectors and dealers will compete to pay the most for your material here - be it a rare single coin or a giant box of lower priced items.
- We handle everything from A to Z including Exonumia and bulk.
- We will travel to assist you in the process and have a proven track record with our consignors - we will happily provide references.



Consignment Deadline: Jan 15, 2021

Contact Us Today About Consigning!

Numismatic Auctions, L.L.C.

P.O. Box 22026, Lansing, MI 48909

Tel: 517.394.4443; Fax: 517.394.0579

Email: numauctionsllc@aol.com

Visit our Website @ www.numismaticauctionsllc.com