

QSHADING

HDPE SHADING SYSTEMS

Tel.: (+203 424 32 04)

Mobile: (+2 01000345277)

Head office

5 Mahmoud Shaker St. Sidi Gaber Alexandria.

Factory

Block 11, Southth 3zone, New Borg AlArab.

Sales office

33 Darna bulidings, beside Carrefour Maadi, Cairo.

 QShading  www.qshading.com

 qshading  info@qshading.com



SHADING

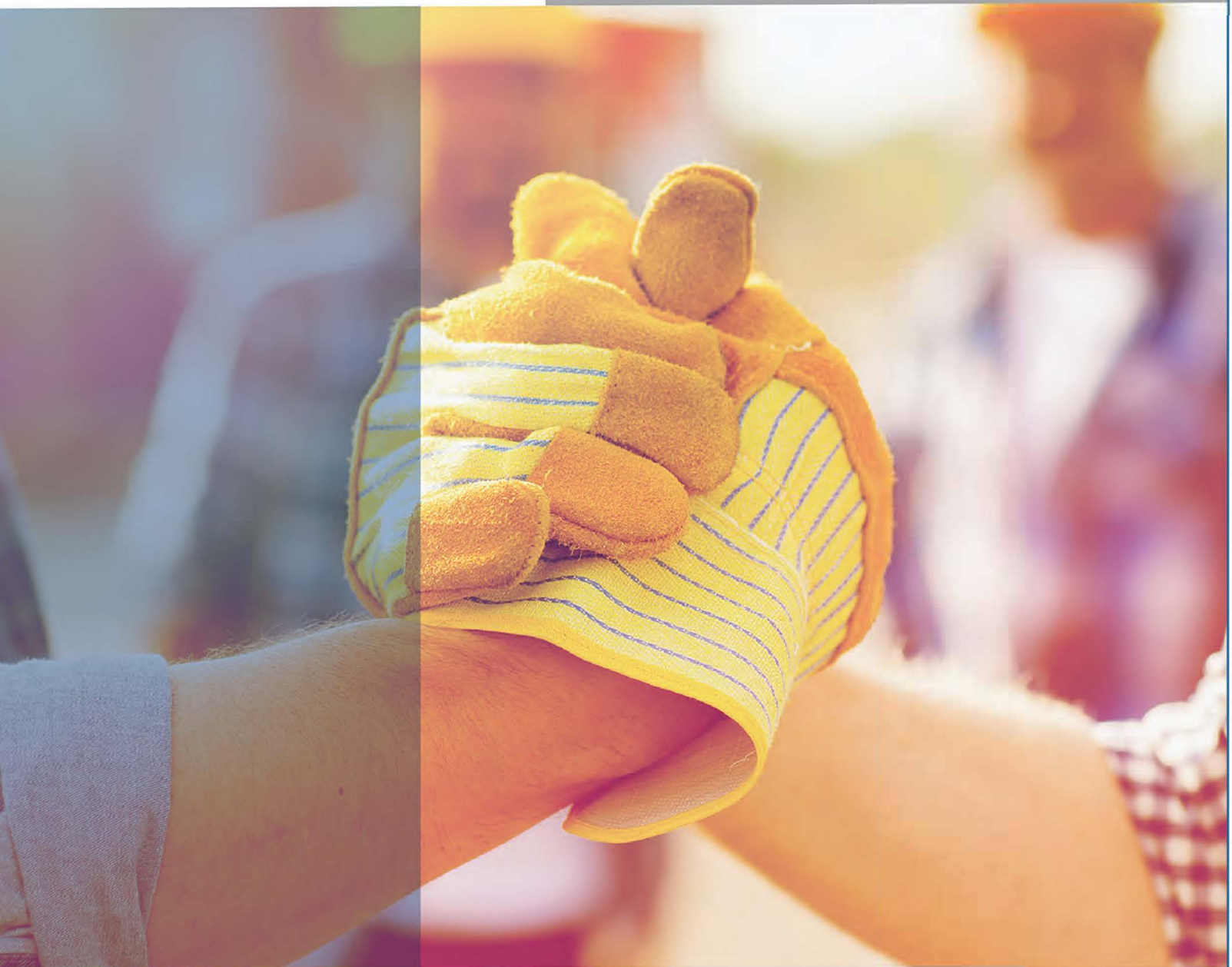
HDPE SHADING SYSTEMS

OUR VISION

To supply our clients with designs and high quality steel & products at competitive prices .

OUR MISSION

We will accomplish our mission through our commitment with growth strategy, outstanding manufacturing techniques, and after sale services.



**WHY
QSHADING ?**

- High Quality Shading Products.
- High Quality Steel Products.
- Safety and healthy workshop.
- Affordable Prices, Extreme safety
- Quick delivery schedule.
- After sale services.



QSHADING
HDPE SHADING SYSTEMS

In **2001** the mother company **ALQUDS STEEL** for steel fabrication and construction started its activities in **Egypt**. Our factory is located at **New Borg El Arab city** in Alexandria governorate, on **12000 m²** area. Ten years later, we proudly were **the first company** in Egypt to Lay the Foundation stone of **Shading Systems** within our new brand company **QSHADING**.

QSHADING brand is specialized in **shading** in all types of industrial, commercial, recreational, touristic, residential or landscaping projects. we have successfully fulfilled all the prerequisites of the **ISO certified**.

QSHADING Solutions is a leader in outdoor shade structure, design and fabrication. Our quality in-house **shade structures and tensile sails** will provide lasting sun protection for all sorts of outdoor areas.

In both manufacturing and construction business, we follow our principals to deliver the best **quality, service and value in the safest way**. We are capable of handling a full control on turnkey projects. Our strategically located **offices** in both **Cairo** and **Alexandria** enable us to reach out to our esteemed clients upon their budget and time frames, in addition to the general instructions. We professionally provide **custom designed services** as well as construction management.

TYPES OF SHADING



SAILS



UMBERLLA



HYPER



PYRAMID



PARKING

PARKING



MSC Parking

Area : 210 M
Location : Alexandria
Description : Parking
Fabric Type : HDPE
Implementation Year : 2017





BALBAA RESTAURANT

Area : 388 m²
Location : North Coast
Description : Chapeau
Fabric Type : HDPE
Implementation Year : 2018



ASMAK RESTAURANT

Area : 140 m²
Location : North Coast
Description : Hyper
Fabric Type : HDPE
Implementation Year : 2017



CAFE & RESTAURANTS



SCALA CAFÉ

Area : 63 m²
Location : Alexandria
Description : Sails
Fabric Type : HDPE
Implementation Year : 2017

PANORAMA CAFÉ

Area : 165 m²
Location : Alexandria
Description : Sails
Fabric Type : HDPE
Implementation Year : 2019



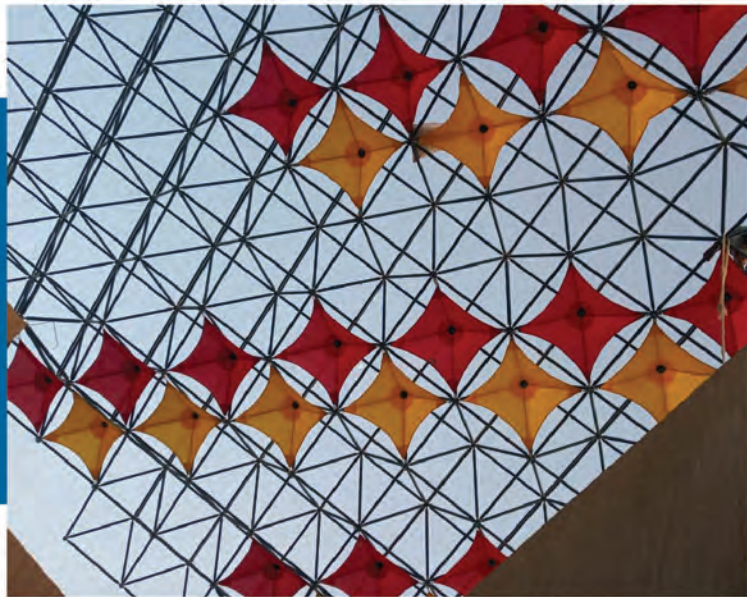


EL- SADAT CLUB

Area : 420 m²
Location : El sadat city
Description : Sails
Fabric Type : HDPE
Implementation Year : 2019

ASWAN ACADEMY

Area : 200 m²
Location : Aswan
Description : Space truss
Fabric Type : HDPE
Implementation Year : 2019



LAGOON CLUB

Area : 850 m²
Location : Alexandria
Description : Hyper
Fabric Type : HDPE
Implementation Year : 2018

CLUBS



OLYMPIC CLUB

Area : 264 m²
Location : Alexandria
Description : SAILS
Fabric Type : HDPE
Implementation Year : 2018



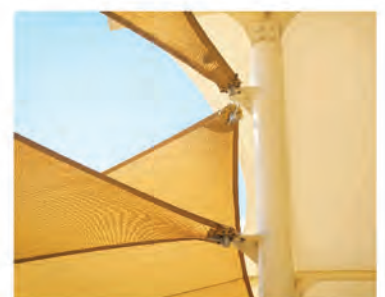
PHARMACY ACADEMY

Area : 240 m²
Location : Alexandria
Description : Sails
Fabric Type : HDPE
Implementation Year : 2019

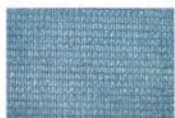
SPECIFICATIONS

CONNECTIONS

yarn	Knitted UV-stabilised HDPE
construction	Monofilament & tape
pattern	Lock - stitch knitted
temperature range (c°)	-30 to +70
Roll length (m)	40
Roll width (m)	3.00(folded)
Nominal fabric mass (gsm)(AS 2001.2.13)	340 +/- 30
Approximate thickness (mm)	∅1.6
Tensile strength - warp (N/50mm)(AS 2001.2.3.1)	635 N/50mm
Elongation at break - warp(%) (AS2001.2.3.2)	95.6
Tensile strength - weft (N/50mm)(AS 2001.2.3.1)	2494 N/50mm
Elongation at break - weft(%) (AS2001.2.3.2)	70.4
Wing tear - warp (mean)(AS2001.2.10)	187 N
Wing tear - weft (mean)(AS2001.2.10)	359 N
Burst pressure (kPa)(AS2001.2.19)	3500
Burst force (N)(AS2001.2.19)	2146
Flammability index (range0-100)	14
Lead	Not detected
Pthalate	Not detected



325Gr / aqm Mono + Tape shade cloth - standard colors



BLUE SKY



BLUE



DARK GREEN



DESERT SAND



MAROON



OF WHITE



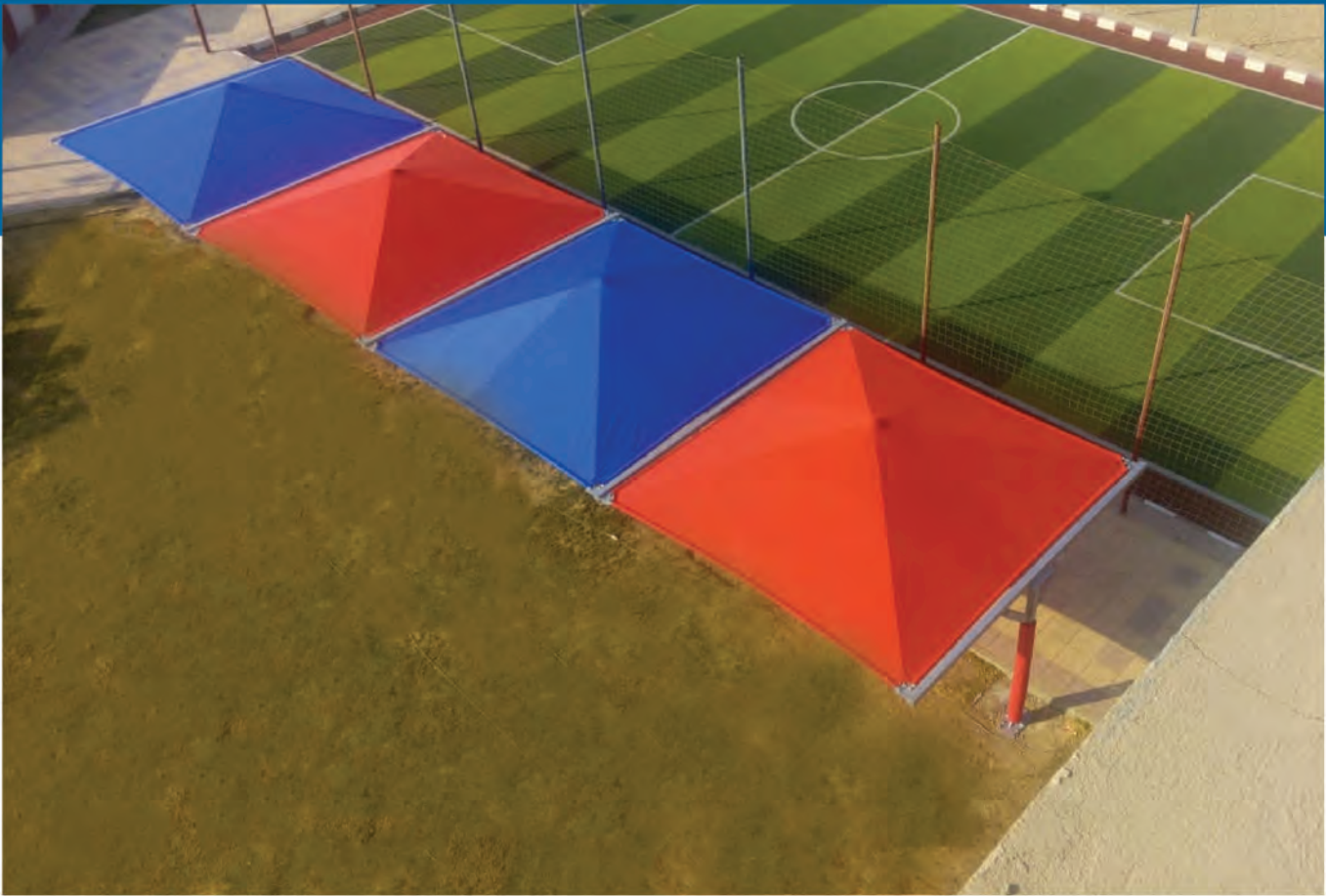
RED



RIVER



YELLOW



ROSANA RESORT

Area : 12 m²
Location : North coast
Description : pyramid
Fabric Type : HDPE
Implementation Year : 2017

MID SOFTS

Area : 60 m²
Location : The 5th Settlement
Description : pyramid
Fabric Type : HDPE
Implementation Year : 2019



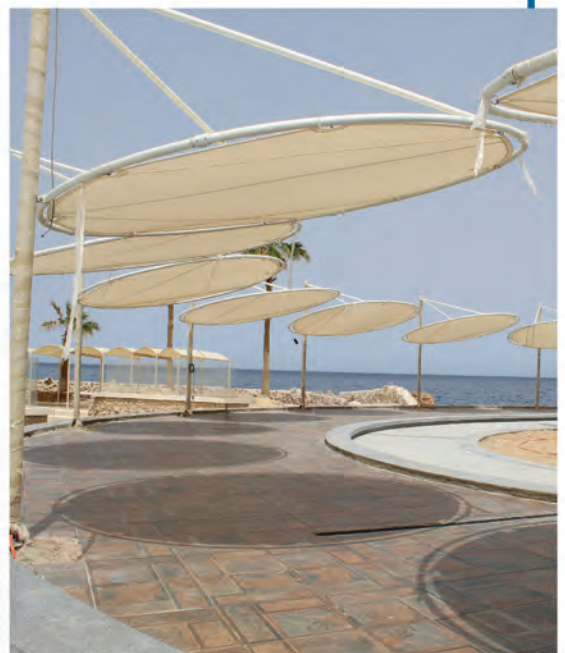


ALBATROS

Area : 600 m²
Location : Hurghada
Description : truss
Fabric Type : HDPE
Implementation Year : 2020



ALBATROS



Area : 200 m²
Location : Hurghada
Description : Sails
Fabric Type : HDPE
Implementation Year : 2020

SERENITY



Area : 100 M
Location : Hurghada
Description : Chapeau
Fabric Type : HDPE
Implementation Year : 2019



Area : 760 M
Location : Hurghada
Description : Sails
Fabric Type : HDPE
Implementation Year : 2019



EL-NORAS

Area : 350 M
Location : Portsaid
Description : Hyper
Fabric Type : HDPE
Implementation Year : 2017





RIVIERA PLAZA

Area : 120 m²
Location : Hurghada
Description : HYPER
Fabric Type : HDPE
Implementation Year : 2019



Area : 80 m²
Location : Hurghada
Description : sails
Fabric Type : HDPE
Implementation Year : 2019



RESORTS

RIVIERA PLAZA

Area : 134 m²
Location : Hurghada
Description : sails & truss
Fabric Type : HDPE
Implementation Year : 2019



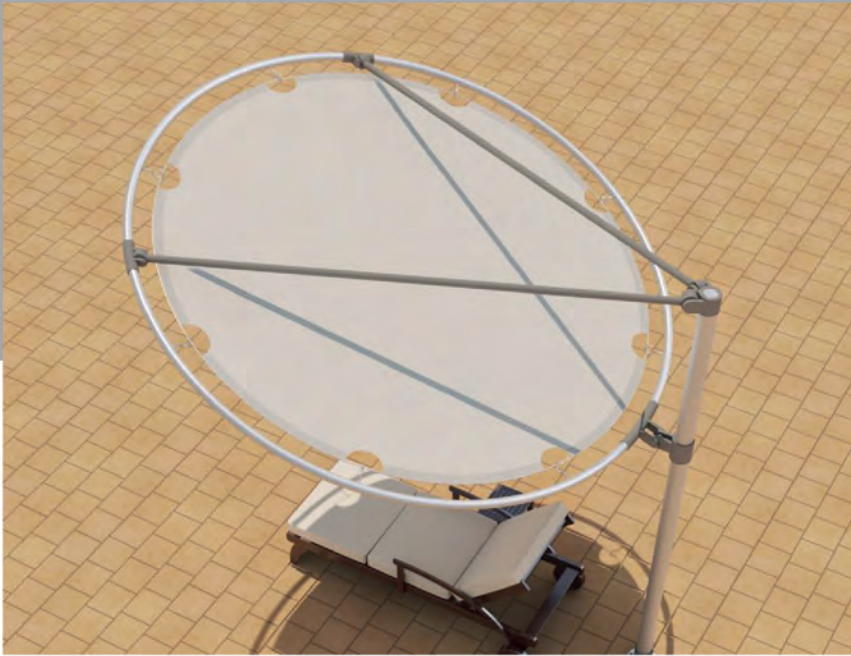
RIVIERA PLAZA

Area : 200 m²
Location : Hurghada
Description : Zigzag
Fabric Type : HDPE
Implementation Year : 2019



ALBATROS





ALBATROS



MARSEILIA

Area : 440 m²
Location : North coast
Description : Sails
Fabric Type : HDPE
Implementation Year : 2019



Area : 161 m²
Location : North coast
Description : Zigzag
Fabric Type : HDPE
Implementation Year : 2019





MARSEILIA

Area :135 m²
Location : North coast
Description : HYPER
Fabric Type : HDPE
Implementation Year : 2019

MARSEILIA (MANTA)



Area : 33 m²
Location : North coast
Description : Manta
Fabric Type : HDPE
Implementation Year : 2019

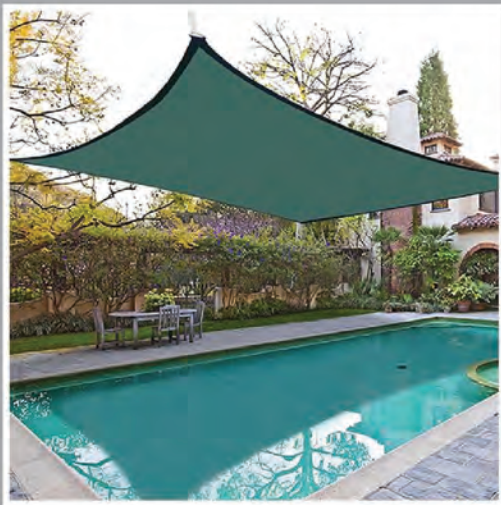


VILLAS



VILLAS

Area : 48.2 m²
Location : Borg Al Arab
Description : Sails
Fabric Type : HDPE
Implementation Year : 2019



SCHOOL



KIDS PARK

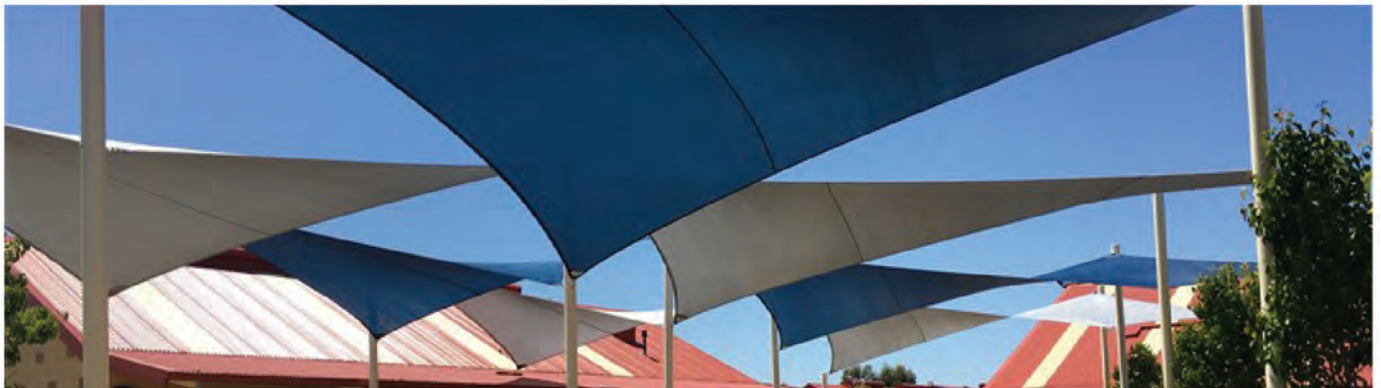
Area : 63 m²

Location : Alexandria

Description : Sails

Fabric Type : HDPE

Implementation Year : 2017



AL ASFORI SCHOOL

Area : 220 m²

Location : Portsaid

Description : Pyramids

Fabric Type : HDPE

Implementation Year : 2018



