



The Spiritual Journey  
Paintings  
of  
Rathbeagh Farmhouse  
Ballyragget, Co. Kilkenny

by  
Gillian Kelly Campden

# **The Spiritual Journey Paintings of Rathbeagh Farmhouse**

The following paintings were commissioned by Phil Phelan, and produced to reflect her spiritual journey and her deep, personal connection with Rathbeagh farmhouse, the land on which it stands, its history and its people, both past and present.

The paintings were produced by Kilkenny artist Gillian Kelly Campden who worked using her own spiritual practices to connect, interpret and visualise all of the information that she was given.

Gill has been practicing yoga and meditation for the past 20 years and has engaged the study and practice of Vipassana (insight meditation) as a life journey. She used many meditative and spiritual connection techniques, yoga body movements and visualisation to assist her in creating the work. Working slowly and meditatively over the course of two years, she incorporated the multitude of spiritual readings, story's, objects, historical events and the client briefs into the detail of the paintings.

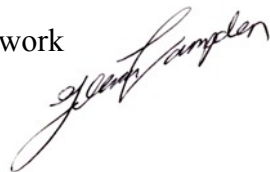
The work commenced during a very powerful celestial phenomenon. This rare event allowed Gill to embrace the energy that occurred during the Super Moon/Blood Moon Eclipse of 2015. As the phenomenon began to manifest, Gill used her practices to bring her creative energy into flow, and as it grew stronger, her creative mind was flooded with the imagery and the universal insights required to work on such spiritually inspired paintings.

The powerful influx of cosmic energy which occurred during this period, enticed the earth's vibration to amplify. This allowed new opportunities to immerse, opening awareness of the inter connectivity of everything, and it was Gill's intention to express this in the work. Her aim was for all those who experience the paintings to observe, feel, and contemplate these connections.

Gill believes that we can all tune in to the frequency of nature that surrounds us and use it to ground ourselves and bring about positive changes by extinguishing our negative tendencies. This new vibration can be used to assist us to work towards the process of reevaluating and re-establishing balance in our lives. If we open up and start to establish a creative and spiritual path, the fast pace of life that has structured our lives for so long, our fears, insecurities and judgments will begin to fade. We will open up to a new awakened sense of peace, creativity and compassion.

The blood moon reflects the energy of rebirth and cleansing and the paintings allow an opportunity for all to look deep into their hidden detail. To awaken to the detail around them and reestablish a connection with nature where peace and tranquility can be found.

I hope you enjoy the work



Gill has been teaching the Art of Meditation and the Art of Creativity for many years and holds weekly classes and workshops at Treogotuiscint (Direction to understanding)  
School of Meditative Arts  
Castlecomer Discovery Park, Kilkenny  
She can be contacted on 087 9738342 for more details.

**[www.gilliancampden.com](http://www.gilliancampden.com)**  
**[www.treogotuiscint.com](http://www.treogotuiscint.com)**



## The Entrance



Grape vines were originally grown in the entrance of Rathbeagh Farmhouse at the beginning of the century, so it seemed fitting to reinstate them, especially as they had been talked about by Phil's father.

There is also an important biblical connection with the grape vines and the teachings of Jesus. As we enter Rathbeagh Farmhouse the grape vines remind us that all spiritual traditions and journeys will bear fruits providing the correct effort and understanding is applied.



Some of the detail in the paintings

As you continue into the entrance hall of Rathbeagh Farmhouse, you step through a doorway and walk under the grapevines and into the hallway where the vines welcome you and wish you well, reminding you to make the most of your time at Rathbeagh, working diligently to bear the fruits of your practice.

The hallway is infused with an amazing sense of peace and tranquility which reflects the building, the current guardians of the Rath and its surrounding lands.



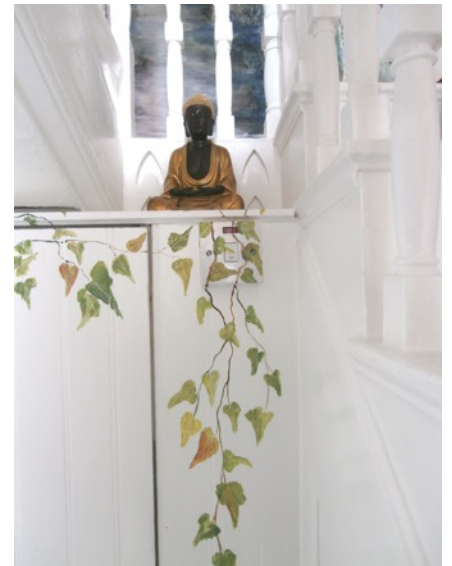
## The Entrance Hall



The Ivy painted in the entrance hall is a reminder of our interconnectivity, the Ivy entwines us all in the twists and turns of life, friendships and the long lasting connections and bonds we form. It is a symbol of our ability to grow, even in challenging environments, and how our vitality can continuously shine. Ivy also reminds us of survival and determination, as it will continue to grow even after it has been damaged.

Its form takes on divine proportion in the shape of a spiral, present in nature and our inner Kundalini energy, as it flows internally up through our energy centers. Each of its leaves form five points which symbolise harmony of the elements, unified by the subtle bonding energy.

It is hoped that as you enter the hallway you will feel the positive energy which surrounds you, open your awareness to the creativity and notice, in detail, every step you take up the stairs on your journey to become fully awakened.



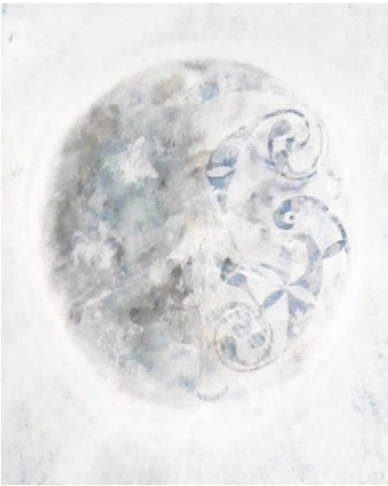
## **The Central Staircase**



**Blue Moon Over The Rath**



## Blue Moon Over The Rath



The blue moon of July 2015 was the inspiration for the central mural on Rathbeagh Farmhouse main staircase. It was painted directly onto the staircase wall and incorporates Celtic knotwork which symbolises the three natures of the Mind, Body and Spirit and the expression of wisdom which can be achieved when all three natures are open and in balance.

The energy which accumulates during the blue moon can give rise to a heightened sense of understanding and communication between our physical self and the divine energy that surrounds us. The painting of the moon is strong, and pulls your attention to this energy, creating a new beginning as the cycle of the moon begins over and over again. The halo surrounding the mother moon reflects the energy of change, transformation, illumination, creativity and the growth of intuition.

The wish of Rathbeagh is that you experience this as a result of your time in this spiritual place.

The Rath is pictured towards the back of the painting, and the sacred burial site of King Heremon is surrounded by the ancient spirits, dancing amongst the foliage.

In Gaelic its name is Rath Beithigh which means the Rath of the Birch trees and it is this that formed much of the inspiration for this piece.

If you open your imagination you can step into the painting from the central landing, down a few steps onto the ancient path where you are taken through the ancient birch forest, towards the light, and energy of the Rath. With the full Celtic blue moon illuminating the way, it shows the path to the light, the path to awakening.

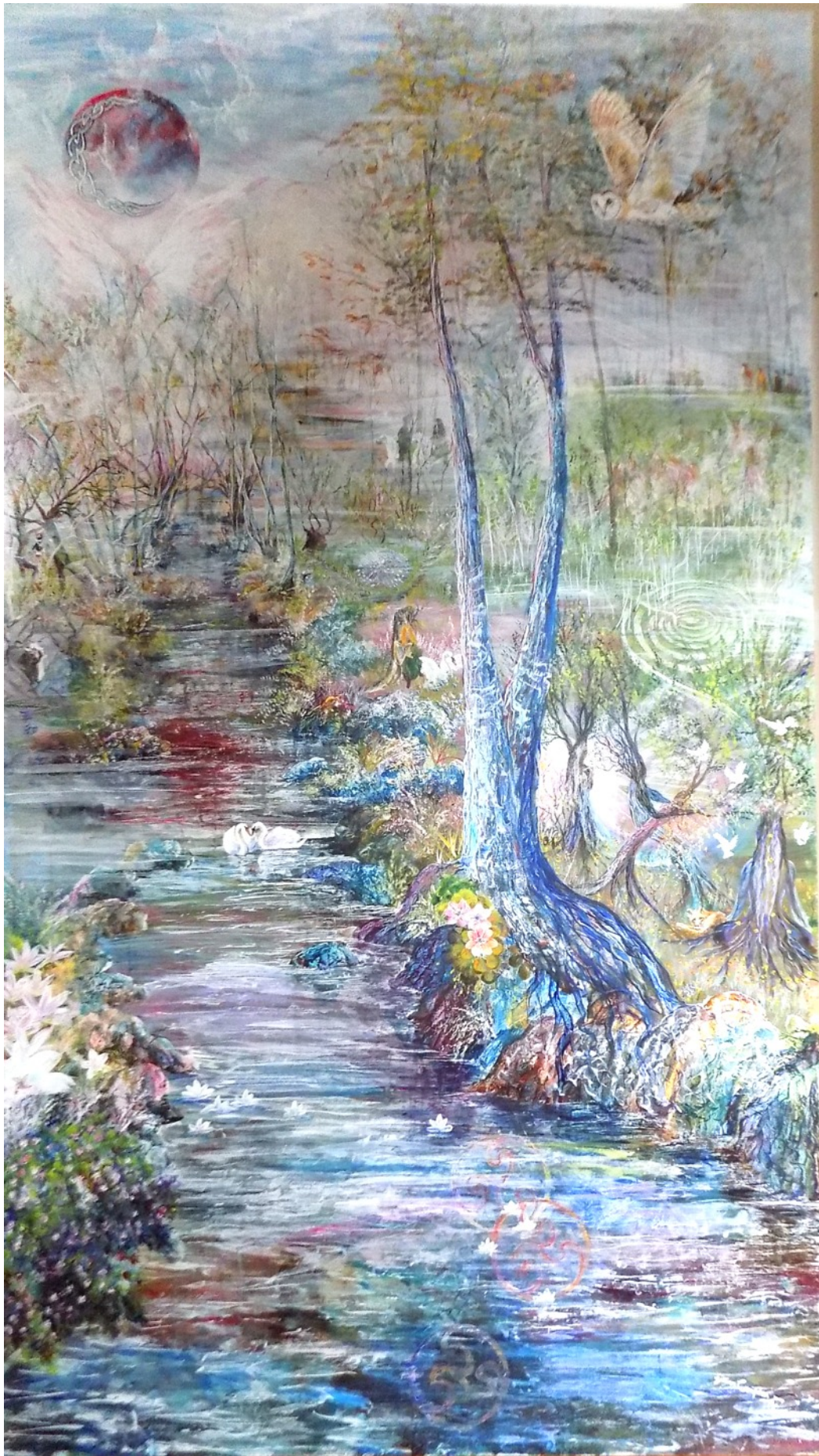
If we can bring ourselves back to our true nature and become a part of all that surrounds us, we can transform ourselves. The path to awareness may be long but if you take patient steps one at a time you will enjoy not only the journey but the light at the end.



In the distance at the end of the path to awakening an angelic figure leads the way forward. Beyond the boundaries that hold us and into new dimensions. From here we can see and understand so much more.







**The Crystal River of Rathbeagh**





The painting to the right of the Blue Moon mural entitled Crystal River of Rathbeagh, was inspired by the readings of Aodhran O'Maoileanaig from Divine Healing ([www.divinehealing.com](http://www.divinehealing.com)) and commenced during the powerful celestial phenomenon, Super Moon/Blood Moon Eclipse of 2015. The super blood red moon was the first object to be painted as Gill's creative energy began to rise. The energy manifested with visualisations and awareness to the new vibrations that were happening during this time.

Celtic knotwork was incorporated within the moon to honour the ancient people of Rathbeagh, with celestial beings and angels surrounding the moon. These spiritual beings are illuminated by the moon's glow, and dance majestically within its light. An Archangel is ascending beneath the moon towards the heavens and the sky is awash with colour and energy.

The precious barn owl, now rarely seen, would have frequented the Rath, has connections with wisdom and mystery. With its connection to the moon it is a symbol of femininity, which is a strong energy at Rathbeagh.



The Druids walk onto the Rath, a place of worship and ceremony. Led by Howard and Eimear, who have been important figures at Rathbeagh, and to whom Gill wanted to pay her deepest respect. Beneath them the fairies dance amongst the young woodland.

King Heremon and his wife Tea ride majestic white horses through the birch woodland which was their ancient homeland. They ride towards the River Nore, which meanders through the middle of the painting, dressed along its banks with native trees, Willow, Hazel, Elder and Hawthorne.

Below them is a crystal grid, a creative natural work of art which focuses energy towards the universal life force. Its potent energy reflects healing and wellbeing to all that encounter it.







As the River flows through the painting it is illuminated by the moonlight and shimmers like crystals, reflecting the red of the moon within its water. The banks, trees and foliage also glisten in the powerful light of the moon.

To the left of the river hidden amongst the dancing trees is the figure of the Egyptian Goddess, Hapthor (goddess of joy, love and femininity).

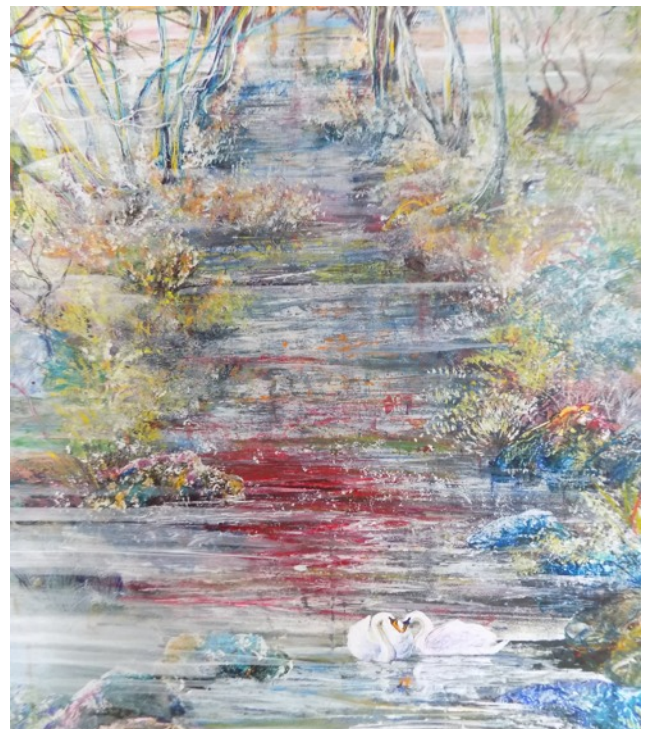
On the opposite bank sits Aengus, the God of love and Caer Ibormeith in swan form. He plays his harp and sings his beautiful music with love in his heart. Everything around him is peaceful and calm.



Below the dancing woodland fairies is a labyrinth which leads you on a meditative journey into wholeness, self discovery and wellness. As you follow the path you open your awareness and inner wisdom.



Below Aengus, beneath the reflection of the moon, within the river water, are a pair of swans. Their grace and beauty are reflected in the soul and eternal essence, reminding us that we have an inner grace and beauty which should be nurtured.



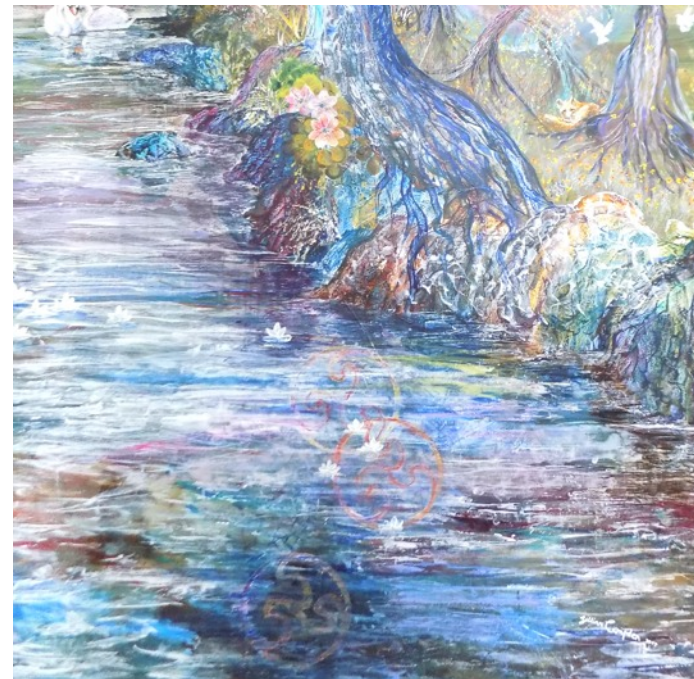




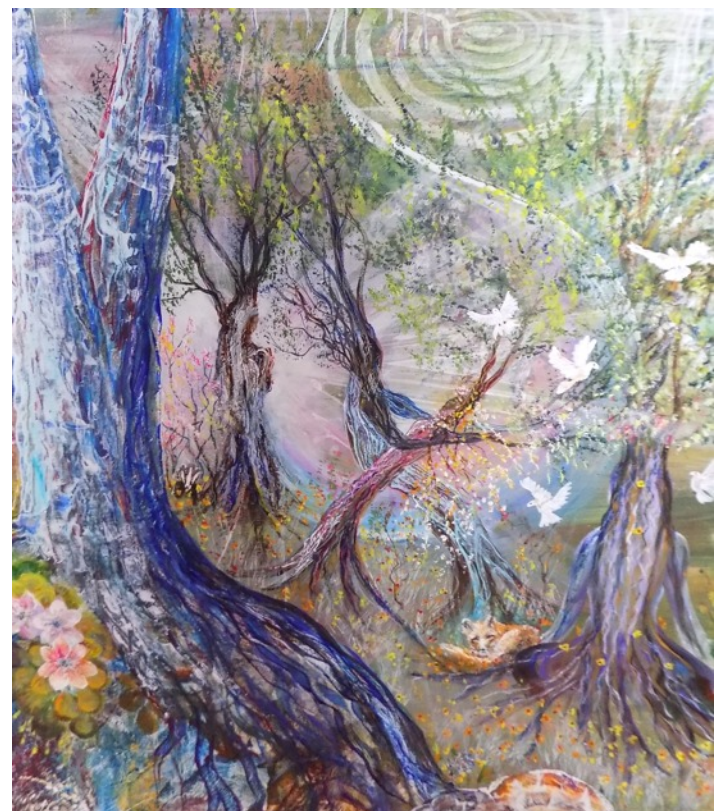
Within the detail of the river bank lies a trench and a reflection of a past life. It takes us to the peril of World war 1, and all of its horror, but there on the front line is a brave nurse assisting a wounded soldier. Beneath them is a link to Japan through the Japanese symbol for peace. We are reminded that this should be our true nature.

The Japanese peace symbol guides the journey down into the tranquility of the peace garden of the white lotus, where a pollen gathering fairy sits amongst the flowers.

The river is alive with colour and lilies float gently on its surface.



As we cross the river one more time, we see the crystal rocks which form the riverbank and Celtic Triskelion Symbols floating under the water, a symbol of personal growth, development, and spiritual expansion.



Finally below the labyrinth we enter the wood of Spiritual Yews trees, where the doves of joy and peace reside.

A golden fox, lays peacefully amongst the calm and safety of the woodland, with a badger and hedgehog. The spirits of the trees dance in the soft breeze whilst a yogic, meditative figure sits in harmony and balance with nature, understanding all.

The angelic light from the heavens shines down upon Mary who holds the baby Jesus in her arms. Wishing Peace and Joy to all who follow the journey to freedom.





**The Soul River of Rathbeagh**





The Soul River of Rathbeagh takes us on a journey into the cosmic energy that exists everywhere, between galaxies and the molecules which make up everything we know to exist. The sun holds the ancient Om symbol, the sound of the universe, the sound of silence. It is pulsating and vibrating, connecting us to the cosmos and all of nature.

Above Rathbeagh Farmhouse a school of dolphins playfully protect all around them and symbolise transformation, courage, strength and love.

The farmhouse remains in place and through the years it has given refuge to those that have been chosen to take care of its lands. It is bathed in soft auric colours and protected by the energy vortexes surrounding it.

A pair of faithful Rooks watch over the farmhouse, nothing escaping their sight from their vantage point. They hold the intelligence and wisdom of the universe and speak to us through their amazing vocabulary. In the distance field the Rooks are gathering for a meeting of minds.

The universe expands across the top of the painting in powerful energetic colours and as the sun sets over the farmhouse the constellations appear and the stars dance amongst its energy fields.

The Pleiades (Seven sisters) shine bright, their light crossing time to reach us and bring us to a higher consciousness.



Ley lines lead us to Chrystalle Ariel who is holding the knowledge of the universe, she is surrounded by orbs of colour and divine proportion. Her right hand holds a circular ball of light and cosmic energy which contains the Pleiades and the Nigerian symbol nwu na mawu (If God dies, so shall I) sits in front of the ball. The symbol reflects that as God never dies, so our souls never die and after death we become one with God.

Within her body and reading hands are Lotus flowers, symbols of purity of body, speech, and mind, and stars shine all around her.





As we travel into the paintings detail, we follow the rivers path once more. Past Rathbeagh Farmhouse, there in the distance is an ancient transparent pyramid structure with an arrangement of crystals and lines of divine proportion, its sacred energy spilling into the celestial elements above.

As you follow the river you pass ancient trees and begin to explore the wonders and mystery of the Stonehenge type stone circle, its energy representing the position of the Rath at this point on the river. The ley lines pass through and the alignments show the cardinal points where the moon, stars, sun, and all the constellation energy points meet. These points also connect to the great Pyramids of Giza and link to the importance and connections of the current guardian of the Rath.

The Eye of Horus offers healing and protecting to all who notice its symbol and come to Rathbeagh for healing. The eye is contained within an Ankh which serves as a symbol of clairvoyance, it represents the power of seeing the world beyond and the realisation of a superior power which is sacred and secret.

The river then cascades over a cliff and the waterfall takes us into Delphi, the centre of the world, and the purification of the sacred castalian spring. The spiritual Laurel trees offer their delights to the Oracle who takes in the vapours from the fissure in the tripod, entering her trance where she offers wisdom to all who seek it. She is similar to the current guardian of the Rath as readings have told. To the right of the spring is the Celtic Triquetra symbol of eternal life formed from a continuous interwoven line with no beginning or end.

Apollo the patron of Delphi with his association with healing, music and poetry, connect with the creative energies of the Rath. Apollo is represented here by his epithet, appearing as a Dolphin carrying a Cretan priest on his back who rides across illustrations of Greek symbolism, watched by a wise Rook.

As you drift across the painting you are introduced to the Wolf who lovingly watches over you as part of its family. The highly intelligent Wolf offers you its trust, but only if you earn it, and its highly developed third eye guides you on your journey to open up your intuitive awareness. Amongst the Rath the Wolf is a symbol of our true nature, walking with the wolf you will return to nature and begin to understand it and your interconnections with it.

In the woodland an angelic figure shows the direction to a portal into other worlds. More geometric symbolism is present here in the triangle, representing Father, Son, and Holy Spirit, past, present and future.

The point up triangle represents the foundations of stability, and the ascension towards the spiritual world, and the point down triangle represents the descent into the physical world.







Following the historical timeline of past lives, the Buddha represents connections with ancient India and the dharma. If we cultivate loving kindness and compassion we can follow a path to liberation and non suffering. The Buddha sits in meditation, with his third eye fully open, a bright white light emanates from his crown chakra signifying enlightenment. The lotus flower is close by and symbolises purity of body, speech, and mind. The roots of the flower are imbedded in the mud, a teaching about our lives, its blossom is above the water held on long stalks floating above the muddy waters of attachment and desire. The unfolding petals suggest the expansion of the soul and the growth of pure beauty and spiritual development. Detachment from the worldly realm is depicted by the droplets of water which slide off the petals so easily.

The Adinkra symbol Sesa wo suban links the Buddha with the lotus flower and reflects change and transformation of character.

The Himalayan mountains blend into the Buddha's figure and prayer flags float in the wind anchored to a Stupa. Here the Stupa represents the five purified elements, the base corresponding to earth, the dome, water, the conical spire represents fire and the upper parasol air, the final point at the top is the element of space. Stupas show how we can obtain enlightenment and wisdom free from suffering and ignorance.

The prayer flags emit positive spiritual vibrations as they flutter in the wind and there prayers are carried via the wind, there colours represent the elements. Blue symbolises the sky and space, white the air and wind, red is for fire, green for water and yellow for the earth. Health and harmony are produced through the balance of these five elements. They also blow in the four directions, north, south, east, west and centre. The prayer flags carry blessings of peace, compassion, strength, and wisdom to all beings and the air is purified by their prayers. As the prayers fade they become a permanent part of the universe, representing how life moves on and is replaced by new life. So the flags are never taken down, just new ones continually mounted against old. An act welcoming life's changes and acknowledging that all beings are a part of a greater ongoing cycle.

The spiritual journey takes in the medicine wheel and the four directions, linking the sacred realisations. Spirituality is not based on fixed beliefs but on understanding, knowledge and interpretation of the rhythms of life, and the observations of nature. The Wakan-Tanka symbol represents the great spirit/mystery. This circular symbol represents nature and balance, everything here is interconnected and part of the bigger cosmic whole. It is a circle of awareness and knowledge. A shamanic map to guide the way to a higher spiritual self.





The snow capped Himalayan mountains merge into the parched North American mountain range, where we realise a connectivity within the spiritual lands. A Puma sits high above the mountain range, looking down upon the valley below.

The puma is a spirit animal who is a guardian and protector, he leads you gracefully to balance the mind, body, and spirit and is our companion along the path to other worlds. The Puma teaches us not to take more than we need and to maintain peace and harmony with our surroundings, to understand and respect the land in which we live.

A waterfall cascades from the mountain top and connects through its energy field with the hair of a native American Indian. The image of the Indian was inspired by Luther Standing Bear, a Sioux chief who's wisdom and life's force link with the medicine wheels significance and meaning in the painting. His image not only merges with the mountain but is an extension of the mountain and represents the connection with the earth.

The face of the Indian chief sits side by side with a Bald Eagle which is another symbol of the connection with nature. The Bald Eagle as a spiritual animal and is a symbol of courage and seeing life from a higher perspective, connecting with the divine. It represents patience and strength, freedom and courage to move onwards in life. The figures look knowingly into the distance seeing and knowing all.





The river continues on its course and connects all parts of the spiritual journey along its banks.

As it flows past the medicine wheel it connects with the Oracle of Dadona. The high priestess stands in the sacred grove, interpreting the rustling of the oak leaves. The oracular sound originates from the bronze chimes hanging in the tree as they blow in the wind. The bronze tripod cauldrons create a circle of sound which vibrates continuously to protect the Oracle from evil, and providing more messages within there sounds. The Oracle has similarities in her features to the current guardian of the Rath.

The mother earth goddess reclines under the oak tree, where two doves sit representing the doves that flew from Thebes to Libya, the sanctuary of Zeus and the Dodona oak tree, proclaiming that a temple should be built. The doves also gave answers to the oracle for interpretation.

The divine earth mother lies across the water and is surrounded by all natural elements. She represents the connectivity with nature as she bears the roots of the tree around her body and nourishes them through the sacred waters in which she lies. She offers fertility, creation, nurturing and life.







The waterfall flows through the native American Indian into a crystal clear lake, where it connects with the Aboriginal Shaman. The lake feeds a river, which is symbolised by traditional Aboriginal artwork, with embedded symbols throughout. The artwork shows how the river moves, meeting places, camps, crossing points, paths and waterhole's. The river becomes a snake and reminds us of our spiritual growth as it rises up through our spine and the Kundalini energy awakens us to enlightenment. A giant rock depicts a frog who symbolises letting go of negative emotions, the frog walks between worlds, water, and earth and represents birth and fertility.

The Aboriginal wisdom then meets the wisdom of the Celts where the Triskelion symbols which are derived from the Greek word "Triskele" meaning three legs. These represent diverse meanings from life to death and into rebirth, the spirit, mind, and body, mother, father and child.

These Celtic symbols blend with Faith, Hope and Charity who are dancing in a garden surrounded by elemental symbols which lead to a sacred orchard.

Fairies dance and play in the garden where apple trees, sunflowers and roses grow. All significant to the Rath and its current guardian. The red rose is a symbol of the deepest love and corresponds to the root chakra, where the life force resides. The white rose is a symbol of innocence, purity and new beginnings. White is the spiritual colour of the higher realms, and corresponds to the white light of the soul. The Sunflower brings happiness, strength and love, it is a follower of the light just as all who enter Rathbeagh are. The Sunflower provides nutrition, energy and healing.



The garden path leads to the river once more, where you can stand and meditate as you listen to the grounding sounds of the rippling water.

Beneath the bank as you drop down into the deeper waters of the river, fish swim and bubbles travel to the surface. Down on the brightly coloured river bed, is a sleeping mermaid. resting in the quiet stillness of the waters. She represents the divine feminine essence and connects with Atlantis as the river runs into the seas.







The mermaid connects us with the seas and the lost city of Atlantis, governed by its story, it is our teacher. Our Karma should move us forward to create a new world, free from greed, hatred and delusion and not towards destruction, like that of Atlantis. Could it be that we were a soul who lived during the time of the Atlantean destruction? If so have we managed to redeem our Karmic debt?

The city lies deep beneath the waters and the beauty of its form comes to life once more as it shines through the water as nature absorbs it. The fallen city is giving light and life to all beings that inhabit its broken forms.

Bubbles and sparkles of light drift up to the surface of the water and the roots of the Lotus flower give anchor to the beautiful flowers that swim delicately above.

Dragonfly's dance above the rocks and are a significant symbol to the lost civilisation below them. The dragonfly symbolises change and more importantly the change in the perspective of self realisation and the understanding of the deeper, more profound meanings of life. To go beyond the surface and look deeper into the true nature of all beings.

To the left of the dragonflies dancing on the riverbank are butterflies. These deep and powerful representations of our soul offer transformation, hope and expansion in a life that's continuously unfolding through different life cycles, renewal and rebirth.

The two swans represent the birds that live on the Rath, a powerful symbol of inner grace and beauty. commitment and love. The Swans show us how to live in peace and balance within our busy world. They send a message that we should find time for silent solitude, space to breath and pay attention to our intuition, simply going with the flow of life.

The Heron is another majestic visitor to the Rath and is able to live its life amongst the safety of the land. It is a strong symbol of inner wisdom, showing us how to ground ourselves in nature with full understanding, this will bring about profound insights. The Heron offers us stability and forethought, it helps you to open your intuitive awareness.





Our final journey along the river brings us to the Salmon of Knowledge swimming down stream. The well of wisdom sits under Chrystalle, surrounded by Hazel trees, who's nuts drop into the well. The nuts travel into the river and are eaten by the Salmon who, in turn, gains the worlds knowledge and passes it to who ever eats its divine meat.

The garden of trees moves down to the sacred willow tree where two scarlet snake eggs are hidden. According to Druidic tradition, the universe was hatched from these two eggs, one contained the sun and the other the Earth giving rise to the birth of mankind. The Willow is an amazing tree with many qualities spiritual, medicinal and functional. A sacred watcher through both time and space, and if we choose to understand its offerings to us we will understand all.

Also represented in the tree garden is the Elder, covered in blossom, it offers us a bounty of qualities through its feminine form and links us to the spirits and fairies. A tree that deserves the upmost respect and care.

The Yew stands in its ancient form and again offers us its wisdom, it is our guardian and oracle, we should learn to understand it.

The Hawthorn is draped with offerings, highly respected for age old wisdom and its connections with the fairy world. The Hawthorn, if respected, will protect and nurture.

The final journey takes the spiritual traveller down through the woodland path past the Fairy trees to the river bank once more.

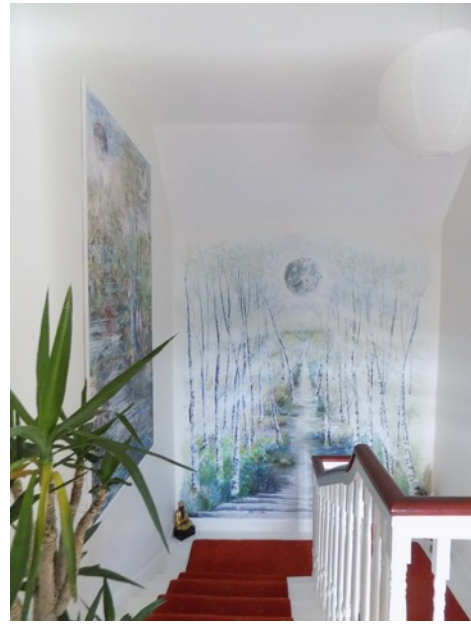
Beneath the rippling shadows and reflections is a bright shining light, surrounding the divine heavenly mother, a symbol to us all of the new age of femininity and higher cosmic vibrations.

May we all open our awareness to the true nature that surrounds us.

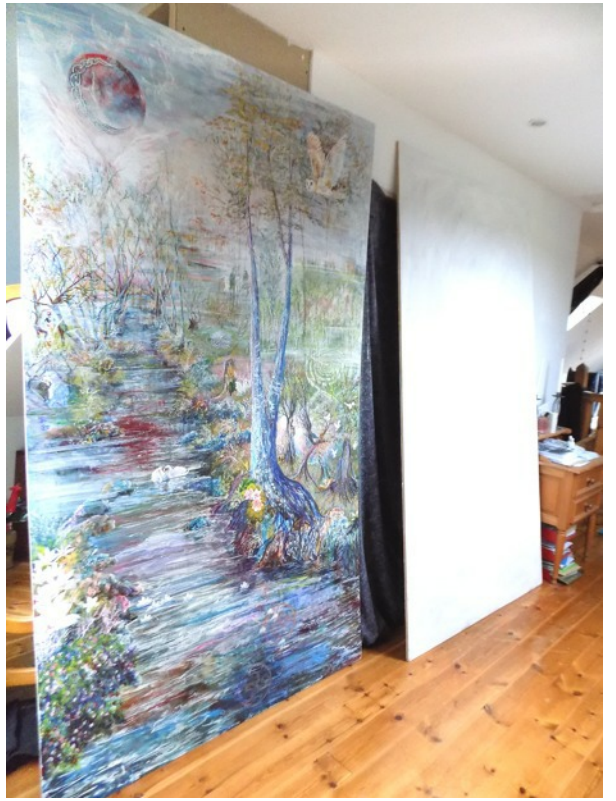




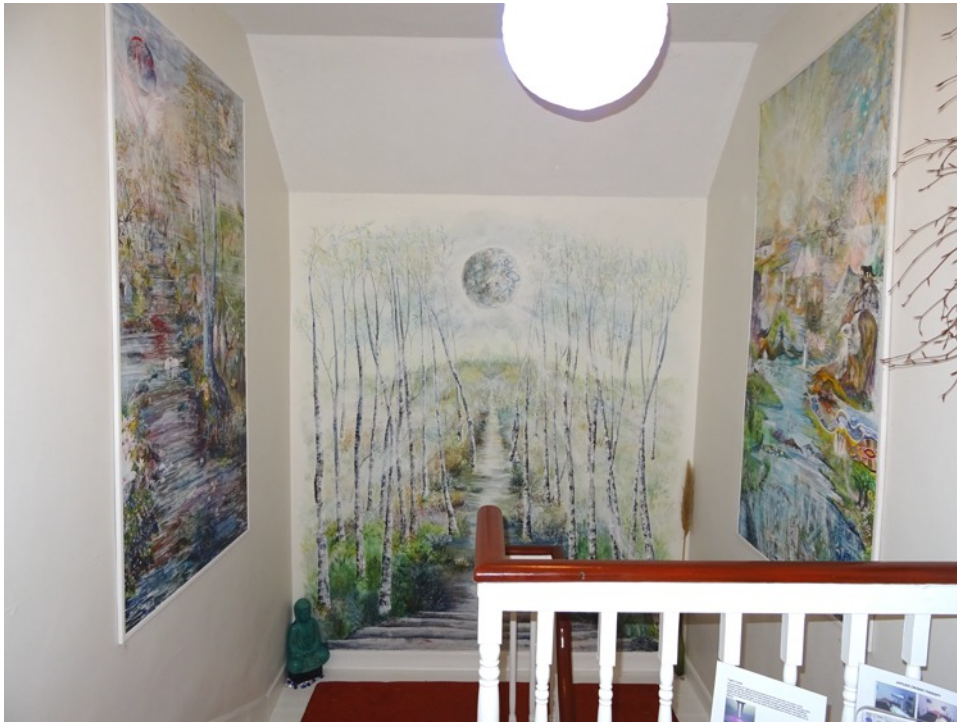
## Photo Gallery











Published and printed by  
Campdens Art and Design Studio  
Ireland  
087 9738342  
[www.gilliancampden.com](http://www.gilliancampden.com)

© Gillian Campden 2018