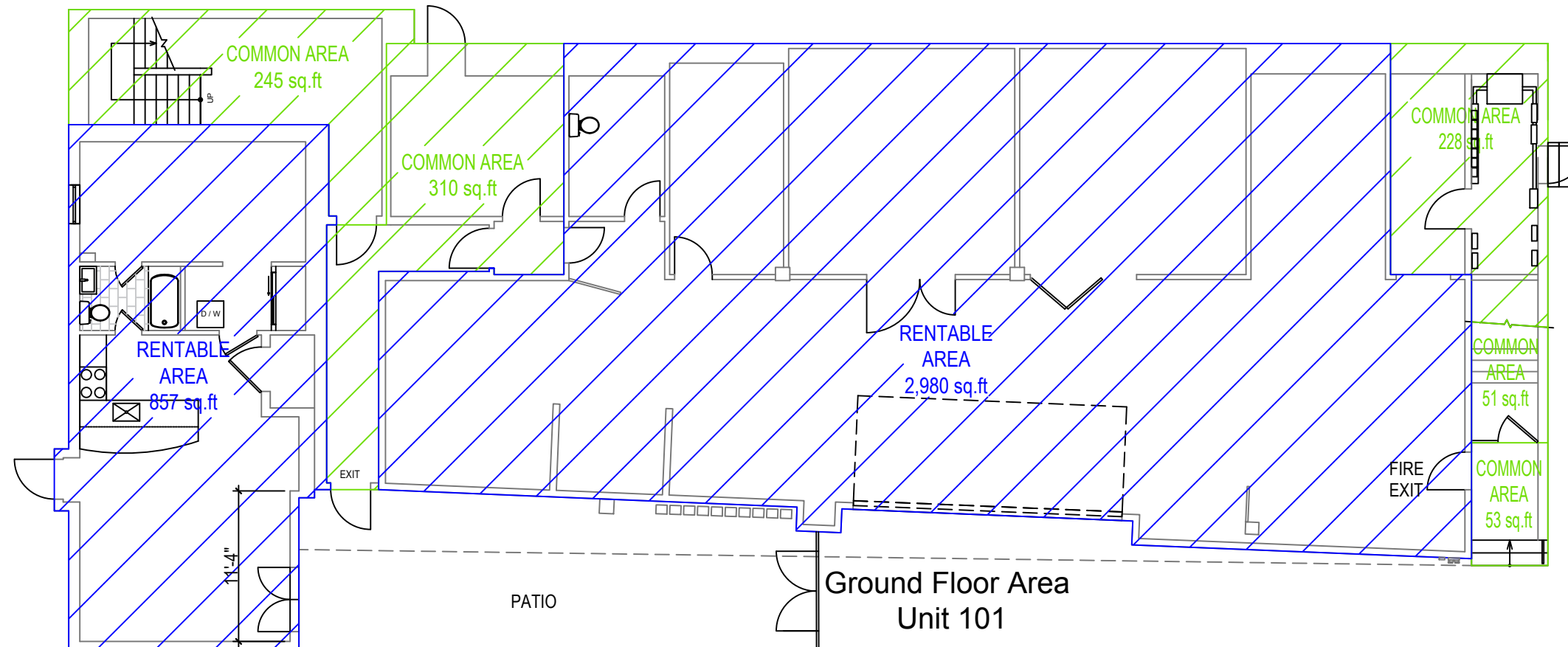


RENTABLE AREA
3,837 sq.ft(81%)

COMMON AREA
887 sq.ft(19%)

TOTAL 4,724 sq.ft(100%)



SUMMARY

	RENTABLE AREA	COMMON AREA	TOTAL
GF	3,837sq ft(81%)	887sq ft (19%)	4,724sq ft (100%)
2F	4,154sq ft(83%)	832sq ft (17%)	4,986sq ft (100%)
3F	4,696sq ft(96%)	204sq ft (4%)	4,900sq ft (100%)
LOFT	2,812sq ft(100%)	N/A	2,812sq ft(100%)
TOTAL	15,499sq ft(89%)	1,923sq ft (11%)	17,422sq ft(100%)

GROUND FLOOR
38 Kensington Place
Toronto, Ontario

As measured May 8, 2017

	K.O.S. DESIGN INC. 30 FORDHOUSE BLVD UNIT 2, ETOBICOKE, ON M8Z 1M6, CANADA +1.416-539-8383 info@kosdesigninc.com	PROJECT:	DRAWING:	NO.	ISSUED/REVISION	DATE	9-MAY-2017	SCALE	3/32"=1'-0"	DRAWING BY:		DWG#:	
		38 KENSINGTON PLACE TORONTO ON M5T 2K4	FLOOR PLAN: GROUND FLOOR			11-MAY-2017						RIHO.O/Y.M	01
						12-MAY-2017						DATE: 8-MAY-2017	