



cavagna group

Advanced Solutions for Gas Control



Kosangas

presents



QUICK-ON 

the new range

Evolution of

Low & High pressure regulators & adaptors

AUTOMATIC VALVES

THE EUROPEAN STANDARD EN16129 REPORTS A TYPE OF CONNECTION VALVE-REGULATOR CORRESPONDING TO:



20,21,22,27 mm valve



Bayonet valve

**RECA DEVELOPED THE RANGE
REGULATORS AND ADAPTORS
LOW AND HIGH PRESSURE
CORRESPONDING TO THE VALVES HERE ABOVE**

LOW PRESSURE REGULATORS EN16129

NEW RANGE

Quick-on 20,21,22,27 mm
Type 634 single stage

Basic version



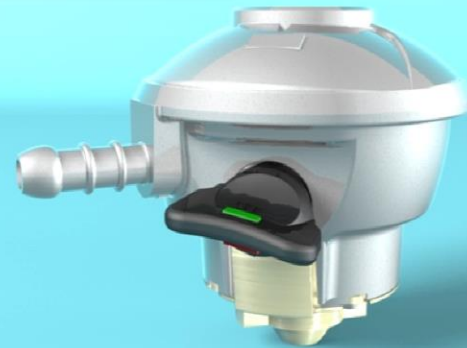
Excess Flow
with automatic reset

with
PRV

Excess flow
With manual reset

Quick-on bayonet
Type 634 single stage

Basic version



Excess flow
With manual reset

with
PRV

Excess Flow
with automatic reset

LOW PRESSURE REGULATORS EN16129

NEW DESIGN OF THE REGULATOR

- ✓ New look of the regulator
- ✓ New opening/closing system
- ✓ New design of the connection to the valve

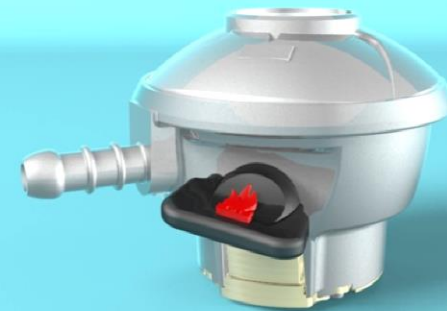
LOW PRESSURE REGULATORS EN16129

NEW LOOK OF THE REGULATOR

The regulator is more compact and with an easier reading when it is on/off



Old version

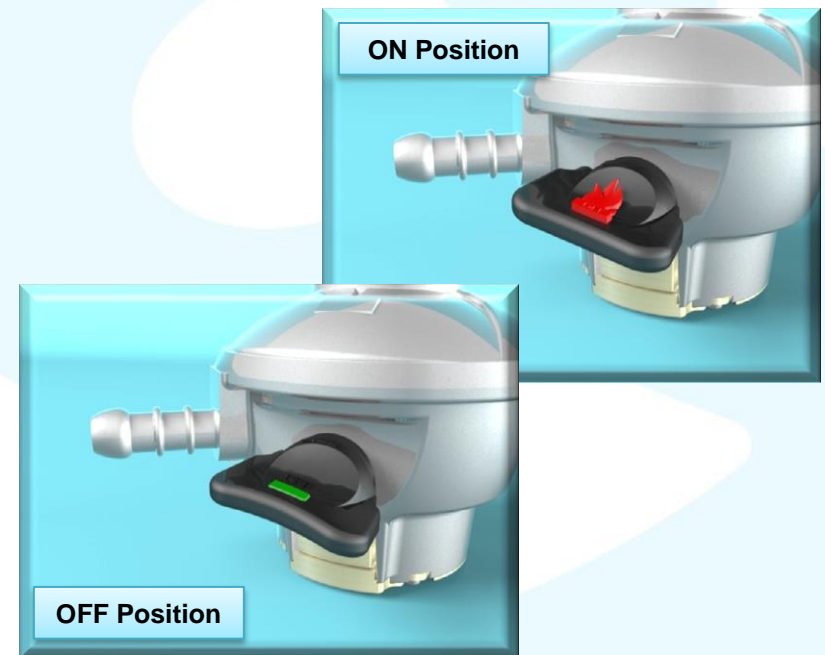
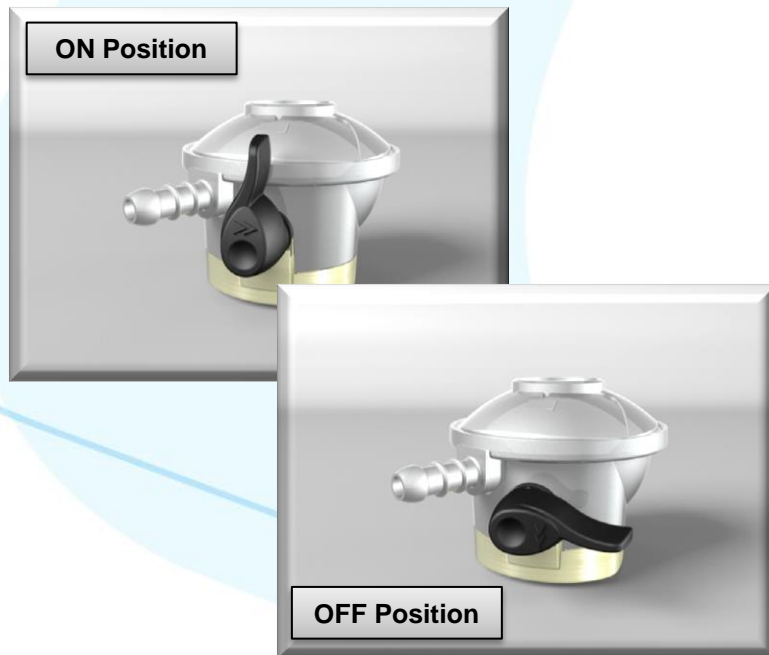


New version

LOW PRESSURE REGULATORS EN16129

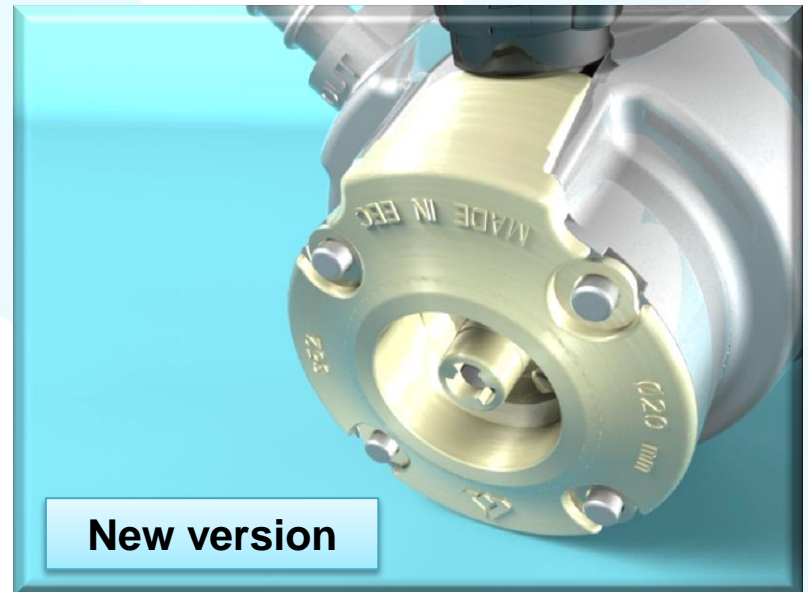
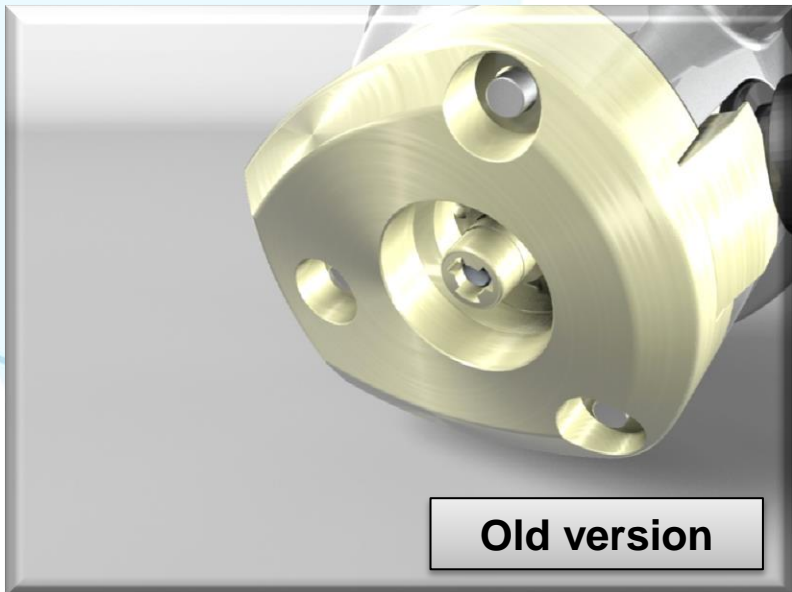
NEW OPENING/CLOSING SYSTEM

Opening and closing easier reading
180° on/off handle rotation



LOW PRESSURE REGULATORS EN16129

NEW DESIGN OF THE CONNECTION TO THE VALVE



LOW PRESSURE REGULATORS

EN16129

NEW TECHNOLOGY OF THE REGULATOR

- ✓ Secure connection/disconnection of the regulator to the valve
- ✓ New counter membrane plate & lever arm
- ✓ New pins body
- ✓ New location of the Excess flow
(reduction of further potential gas leakage)*
- ✓ Safety devices

* = optional

LOW PRESSURE REGULATORS

EN16129

Secure connection/disconnection of the regulator to the valve

- ✓ The regulator* can be connected/disconnected to the valve only when it is in the “Off” position
- ✓ It is not possible to disconnect the regulator from the valve when the handle is in the “On” position.
- ✓ This system (as per EN 16129) reduces the risk of potential accidental gas leakage

*= this system is not for the bayonet regulator

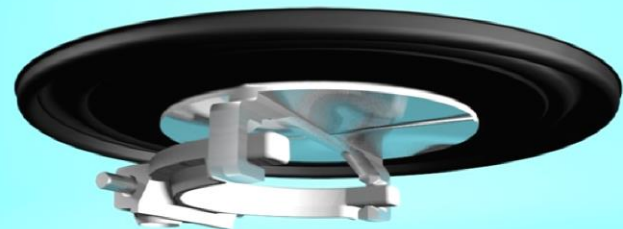
LOW PRESSURE REGULATORS

EN16129

New counter membrane plate & lever arm



Old version



New version

LOW PRESSURE REGULATORS

EN16129

New pins body

Old version



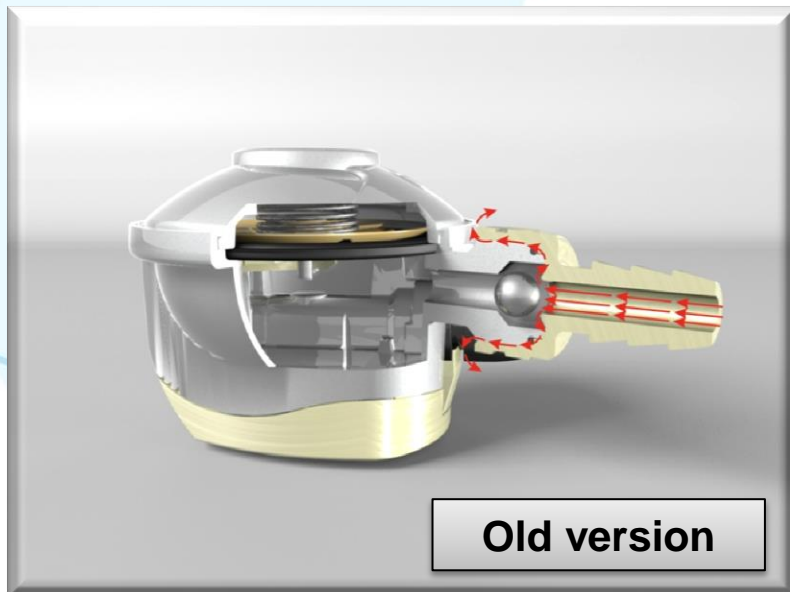
New version



LOW PRESSURE REGULATORS EN16129

New design of the Excess flow valve device (optional)

The excess flow is a safety build-in device
This allows to eliminate uncontrolled gas leakages



LOW PRESSURE REGULATORS

EN16129

Two group of Safety devices*

- ✓ Up stream
 - ✓ Thermofuse
 - ✓ Shut off
 - ✓ Excess flow device with manual reset
 - ✓ PRV

- ✓ Down stream
 - ✓ Excess flow device with automatic reset

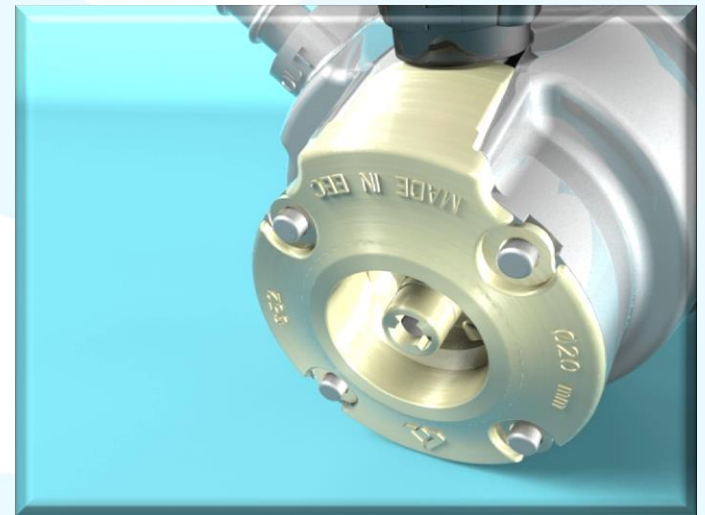
* = optional

LOW PRESSURE REGULATORS

EN16129

Safety device - Up stream

Thermofuse

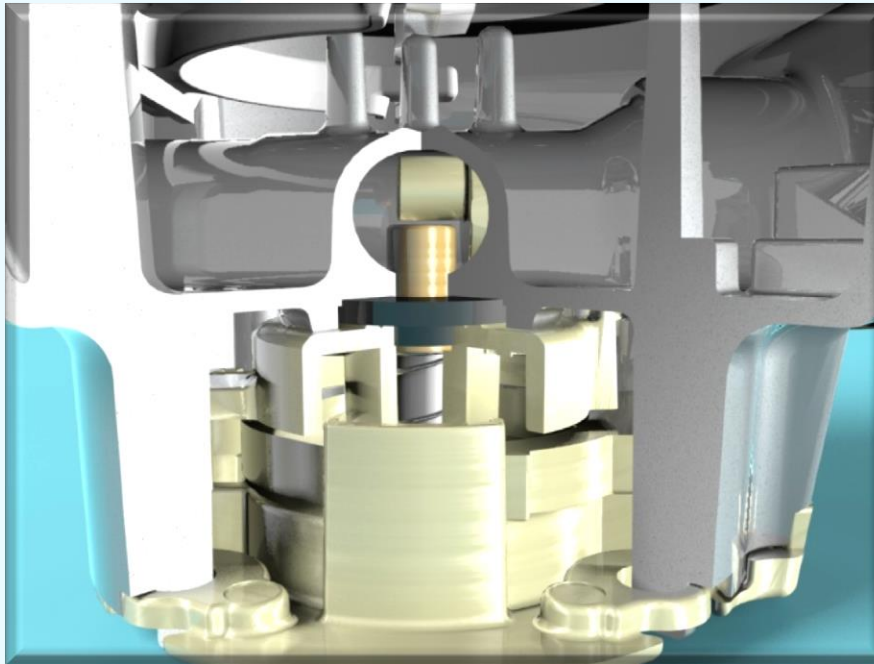


LOW PRESSURE REGULATORS

EN16129

Safety device - Up stream

Shut off



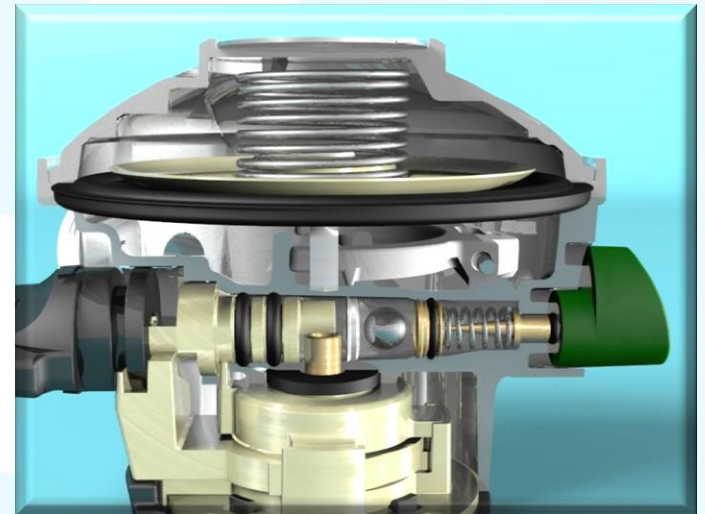
LOW PRESSURE REGULATORS

EN16129

Safety device - Up stream

Excess flow device with manual reset

- ✓ Device designed to prevent uncontrolled gas leakage
- ✓ Operates by limiting the gas passageway when the quantity of gas required by the appliance is greater than the regulator delivery capacity or whenever the appliance connecting hose gets accidentally disconnected or cut
- ✓ After actuation of the “excess flow device” and removal of any failures, the safety device must first be reset by hand pushing the reset button, to restore the correct operation of the regulator.



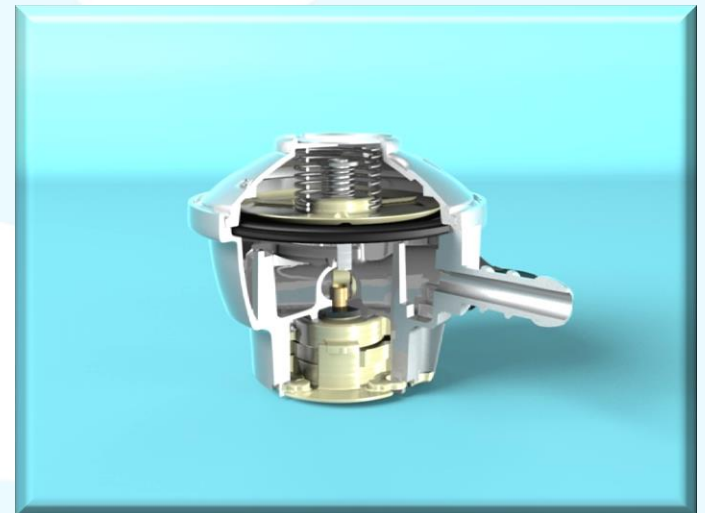
LOW PRESSURE REGULATORS

EN16129

Safety device - Up stream

PRV – Pressure Relief Valve

- ✓ Safety device designed to allow the regulating device to have a constant pressure
- ✓ Such relief valve enters in function at a specific pressure gas value
- ✓ It stops to relief once the nominal gas pressure is restored



LOW PRESSURE REGULATORS

EN16129

Safety device - Down stream

Excess flow device with automatic reset

- ✓ Device designed to prevent uncontrolled gas leakage
- ✓ Operates by limiting the gas passageway when the quantity of gas required by the appliance is greater than the regulator delivery capacity or whenever the appliance connecting hose gets accidentally disconnected or cut
- ✓ The reset is automatic



HIGH PRESSURE REGULATORS EN16129

NEW RANGE

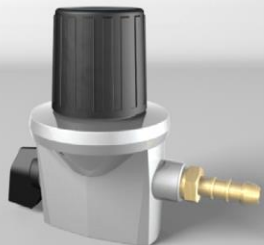
in compliance with the EN 16129

Quick-on HP 20,21,22,27 mm
Type 825



New version

Quick-on HP bayonet
Type 825



Old version

HIGH PRESSURE REGULATORS EN16129

NEW TECHNOLOGY OF THE REGULATOR

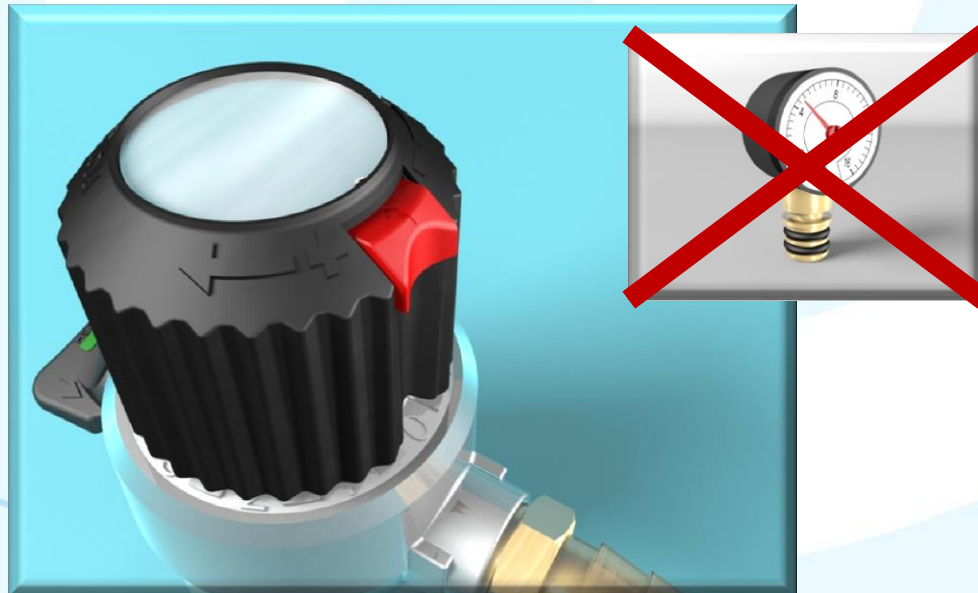
- ✓ 10 position regulation
- ✓ Safety on/off switch system

HIGH PRESSURE REGULATORS

EN16129

10 POSITION REGULATION

This type of regulation allows to have an indication about the outlet pressure without having a manometer

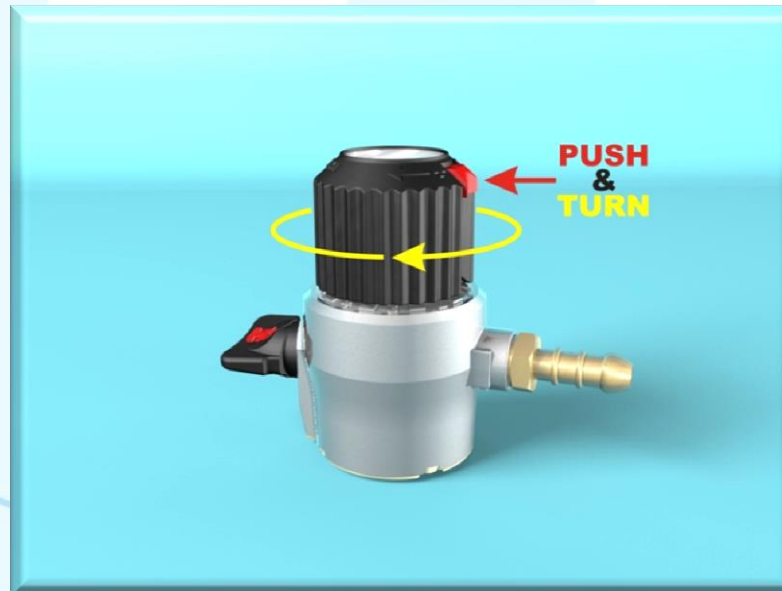


HIGH PRESSURE REGULATORS

EN16129

SAFETY ON/OFF SWITCH SYSTEM

The regulator has a safety switch
In order to open the flow from the valve, you
have to turn-on the opening/closing system



COUPLINGS EN16129

NEW RANGE

Quick-on 20, 21, 22, 27 mm
Horizontal & Vertical Version
Type 511



Quick-on Bayonet
Horizontal & Vertical Version
Type 511



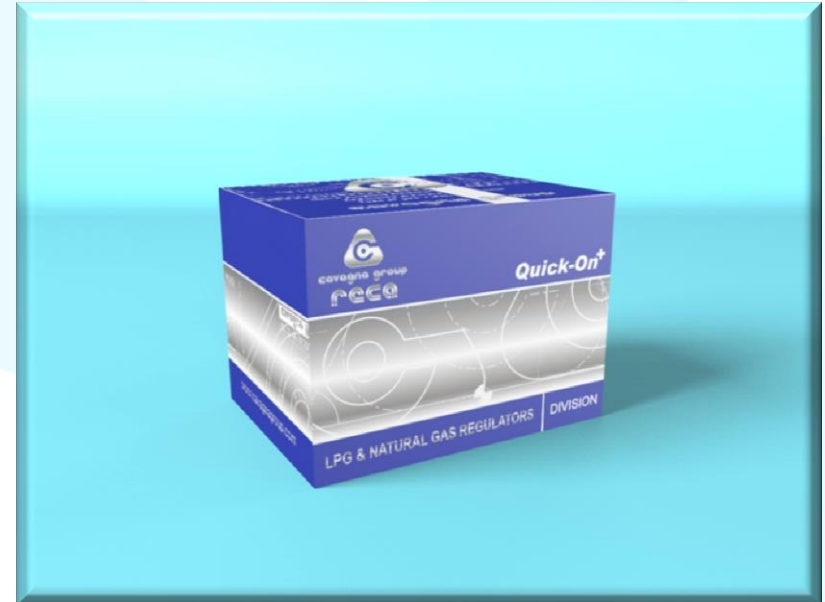
STANDARD SHIPMENT OF THE PRODUCT

- ✓ Standard single carton box
- ✓ Standard end-user manual
- ✓ Standard pallet layout

STANDARD SINGLE CARTON BOX

The standard single carton box of each regulator reports all the references of the EN 16129:

- ✓ Type of gas
- ✓ Outlet pressure
- ✓ Inlet connection



STANDARD INSTRUCTION

Each regulator has a standard multi-languages instruction in accordance with the references of the EN 16129 standard

LOGISTICS

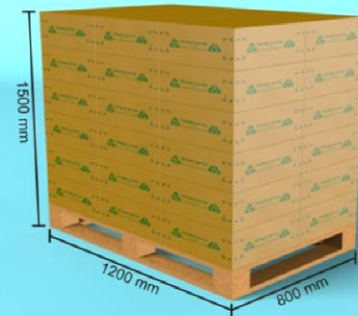
ORGANIZATION OF THE PALLET

Shipment box



50 pcs/box

Pallet EUR



24 box/pallet