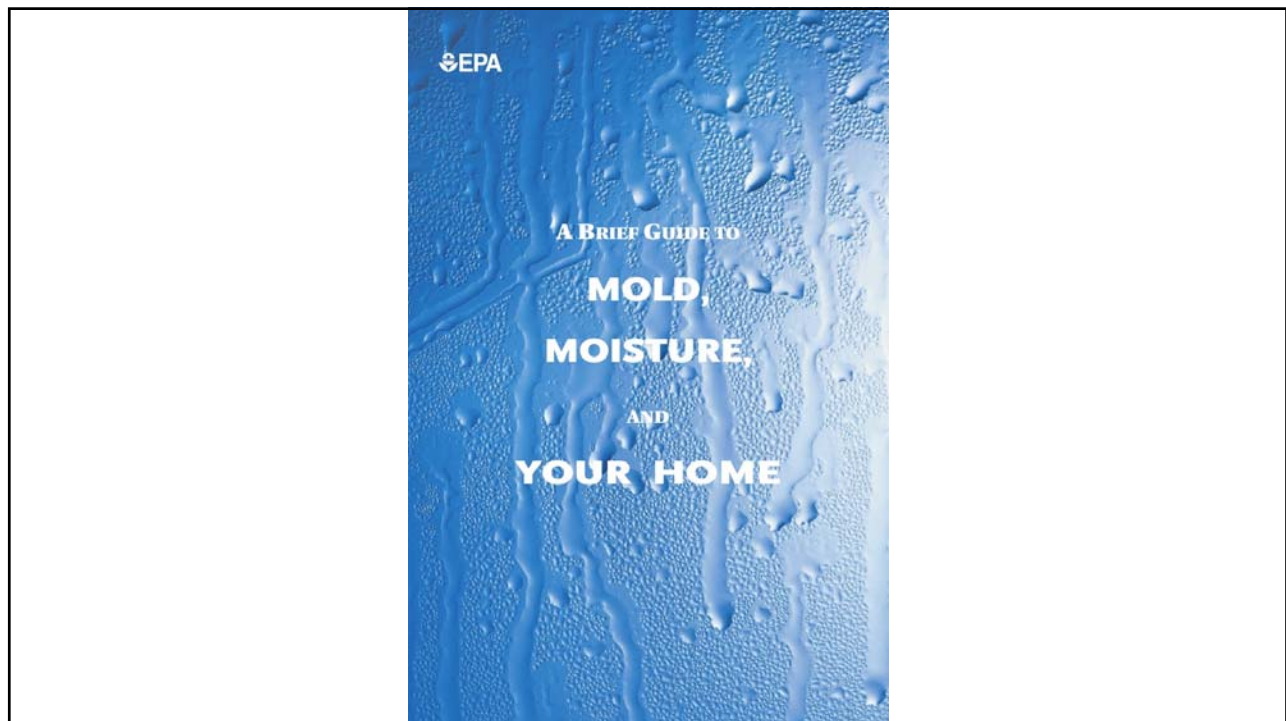
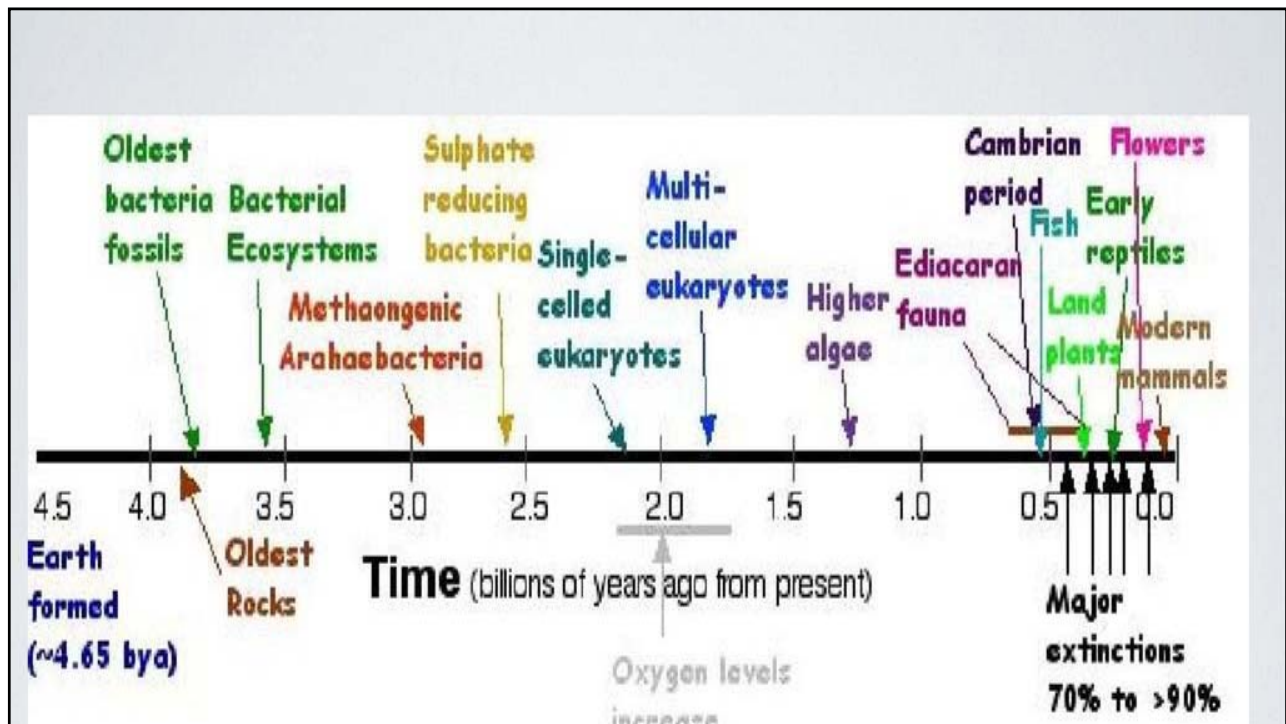


Eugene Benoit, BS, MS, MA
US Environmental Protection Agency
Environmental Engineer

- Indoor Environments Program Coordinator
- New England Regional Asthma Team
- Tribal Air Program Coordinator
- Clean, Green, Healthy Schools Coordinator
- Regional Healthy Communities Grants and Cooperative Agreements Project Officer

Mold, Mildew and Mushrooms

- EPA Mold Guidance Documents
- Mold and Health
- Mold Species
- Mushrooms





Mold Remediation

- New Non-Regulatory Guidance
- Aimed at Building Managers, Professional Remediators, Anyone Dealing with Mold Issues
- Mold Prevention and Remediation
- Checklists and Resources
- Communication with Building Occupants

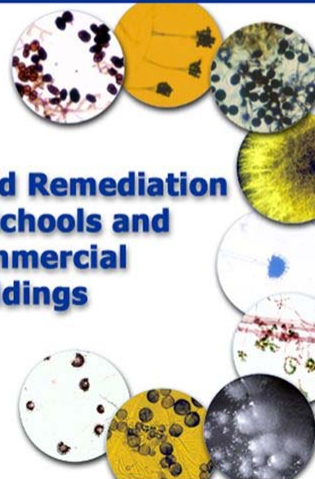


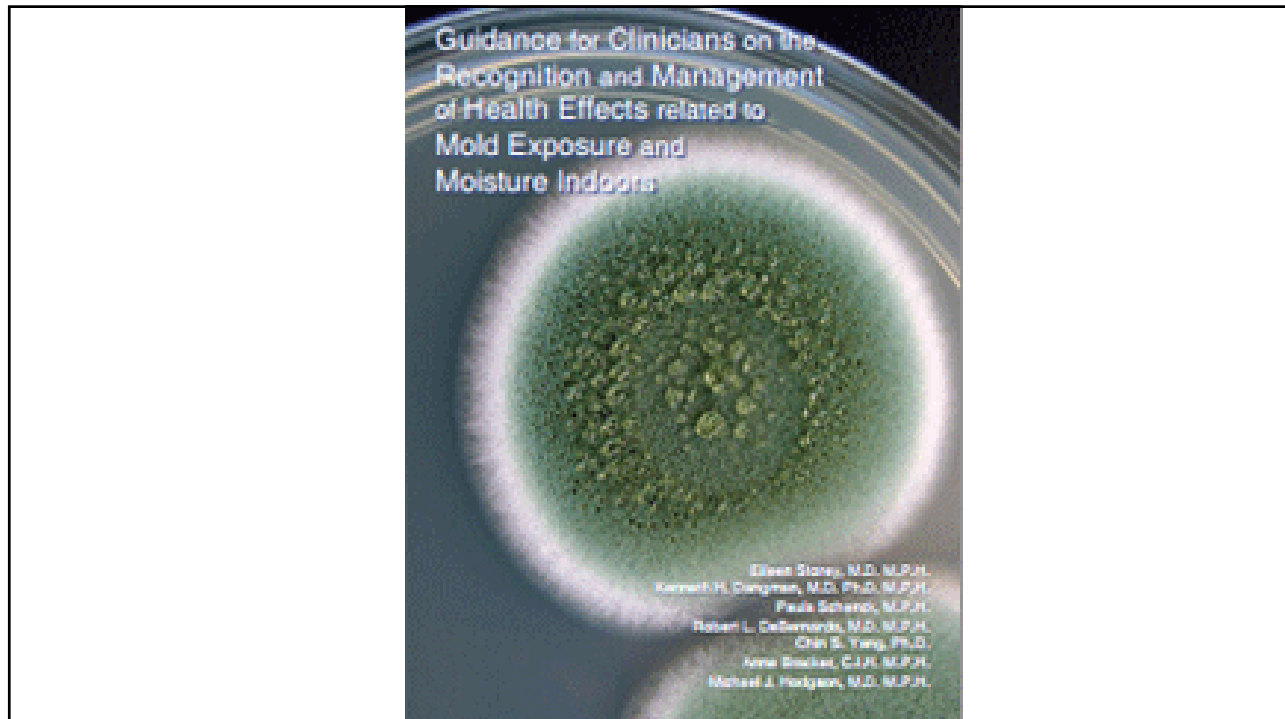
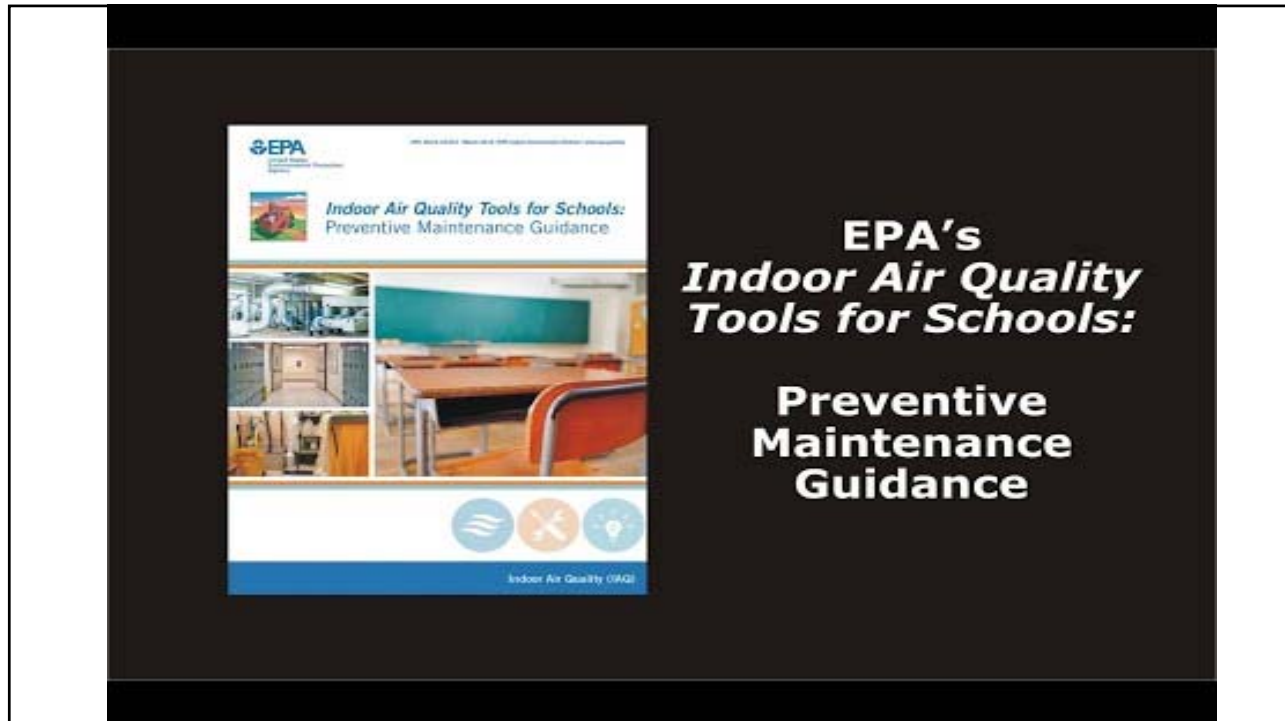
United States
Environmental Protection
Agency

Office of Air and Radiation,
Indoor Environments Division
(6609J)

EPA 402-K-01-001
March 2001

Mold Remediation in Schools and Commercial Buildings





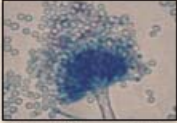




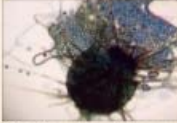


Common Toxin Producing Indoor Molds

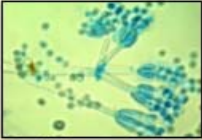
Mold species	Toxin types
<i>Aspergillus penicilloides</i>	aflatoxin, ochratoxin
<i>Aspergillus versicolor</i>	chaetosin
<i>Chaetomium globosum</i>	deoxynivalinol, T2 toxin
<i>Penicillium corylophilum</i>	gliotoxin
<i>Stachybotrys chartarum</i>	T2 toxin, satratoxin H
<i>Trichoderma viride</i>	T2 toxin, DAS
<i>Wallemia sebi</i>	walleminol




Aspergillus versicolor




Chaetomium globosum



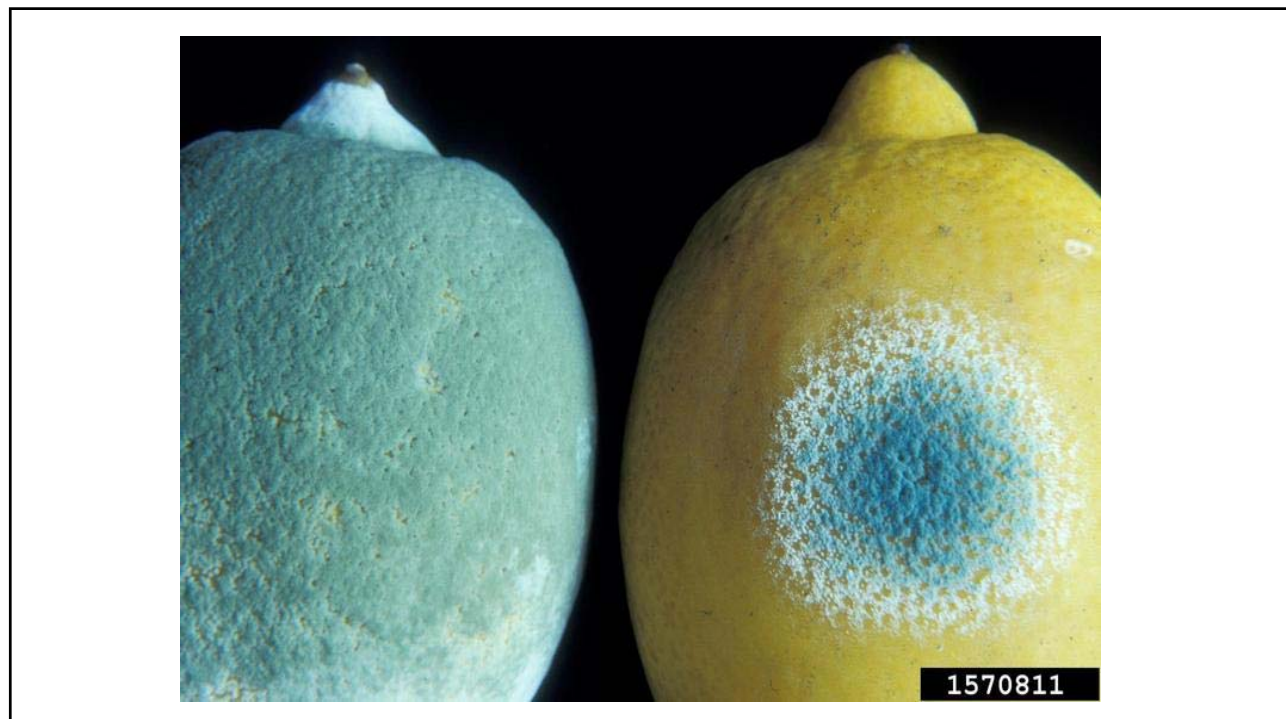
Penicillium corylophilum

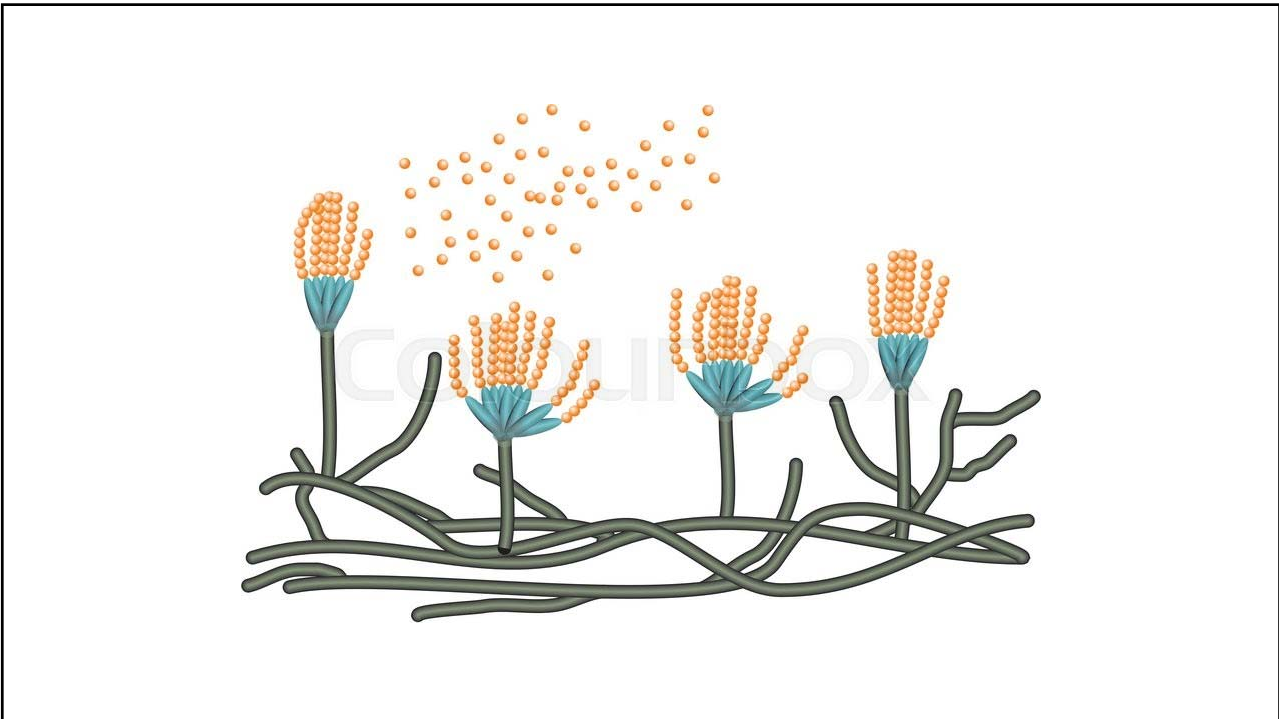


Trichoderma viride

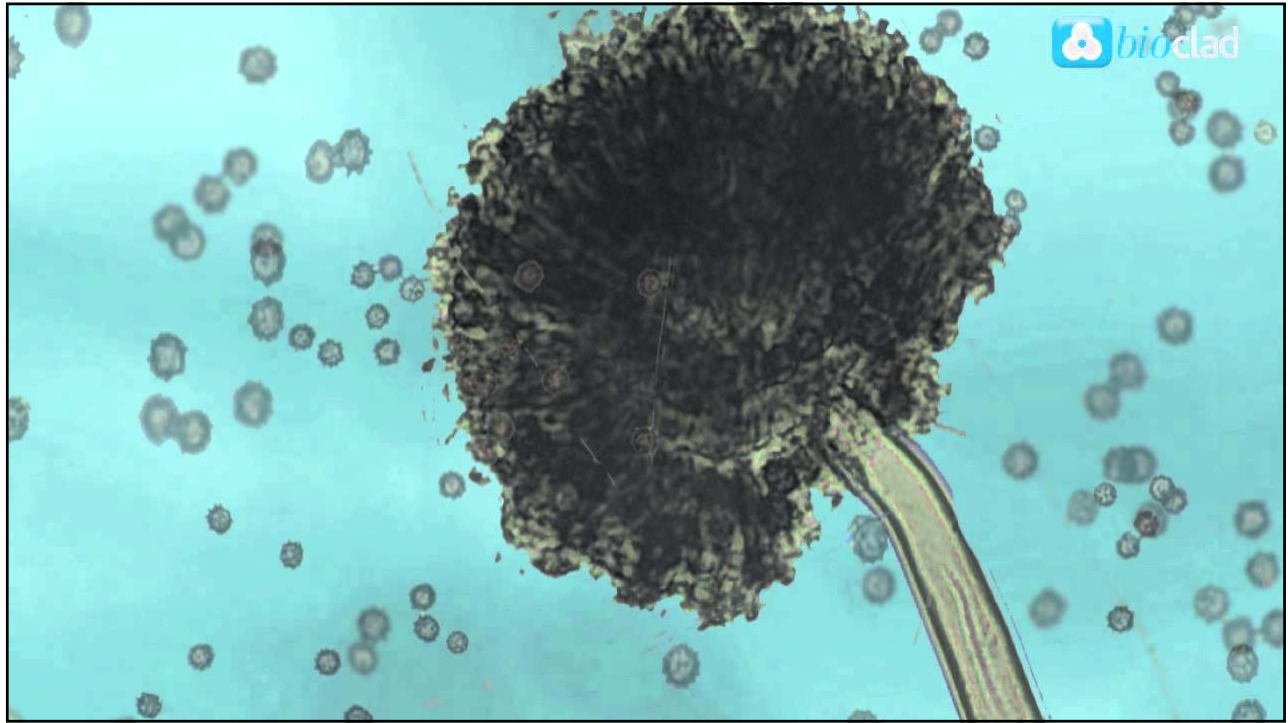


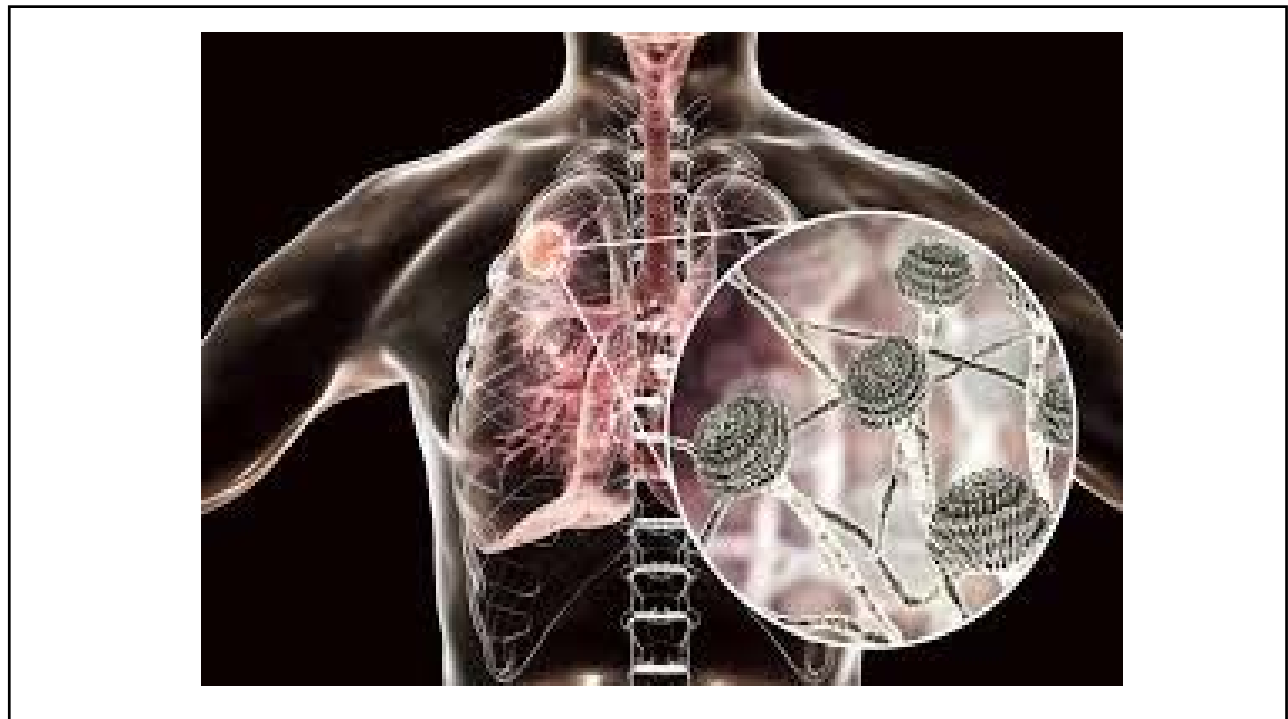
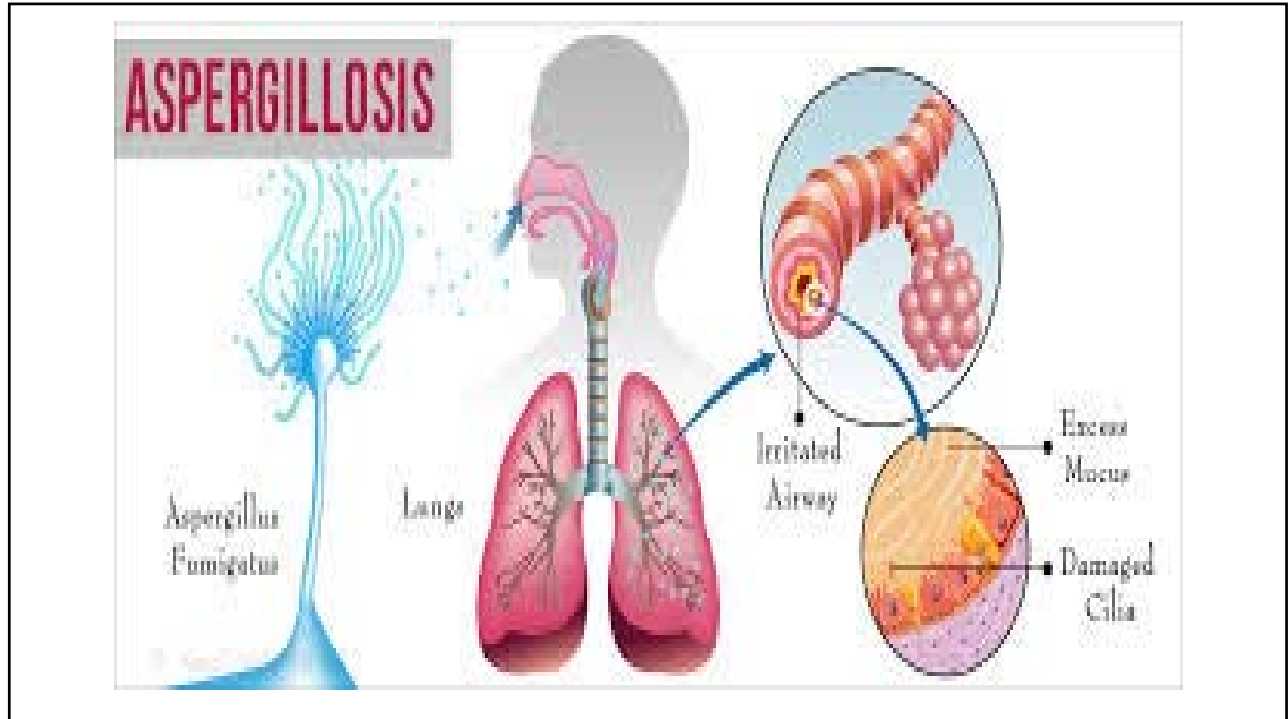
Wallemia sebi

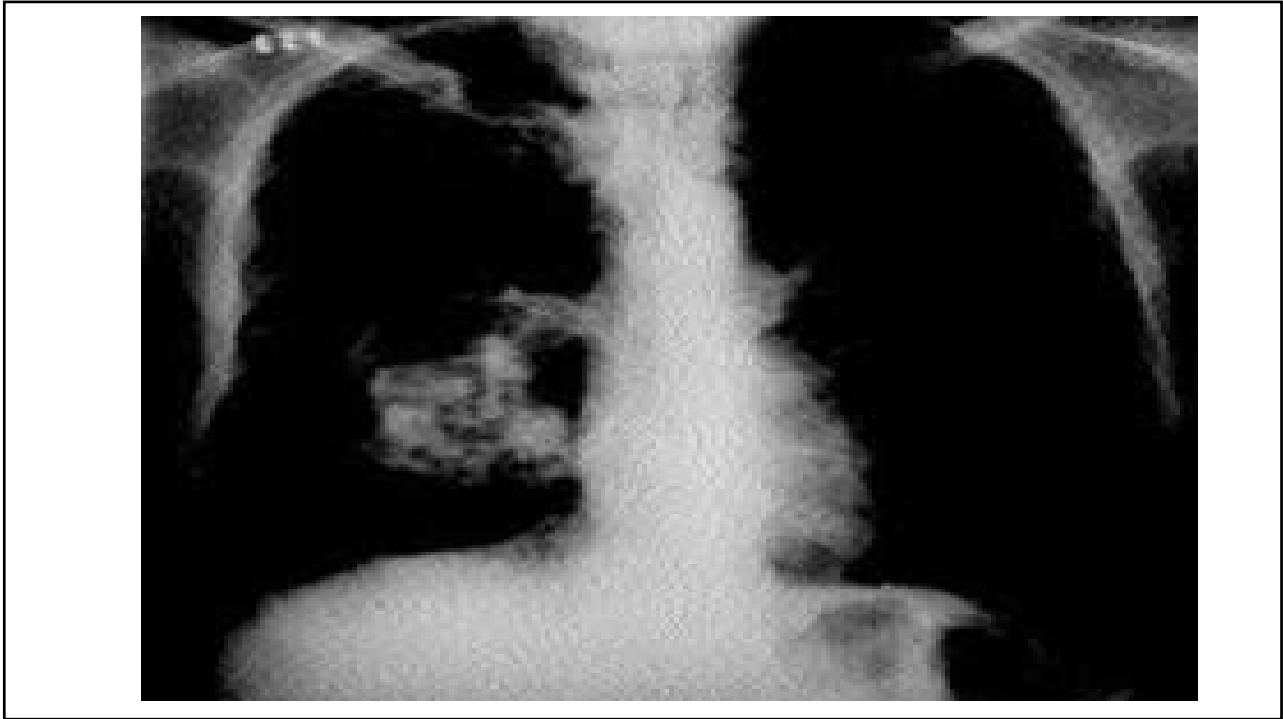




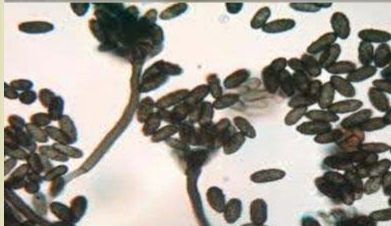








“Black Mold ” “Toxic Mold” “Killer Mold”



Stachybotrys chartarum

Scientific classification

Kingdom:	Fungi
Division:	Ascomycota
Class:	Sordariomycetes
Order:	Hypocreales
Genus:	Stachybotrys
Species:	<i>S. chartarum</i>

we color your digital life

Copyright © KristinGanda

