

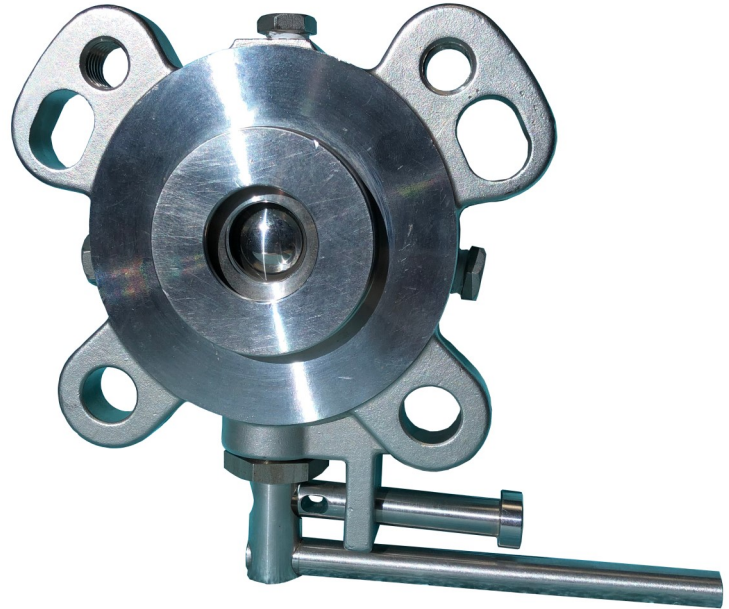


**TRANS-VALVE**  
—SPECIALTY VALVES FOR INDUSTRY—

**Figure 115 B**  
**Transmitter Isolation**  
**Ball Valve**

**Features:**

- Quarter turn
- 316 Stainless steel
- Bubble tight shutoff. Exceeds both ANSI/FCI 70-2-1976 Class VI & API 598 standards
- 1 Calibration port & 2 steam rated external purge ports
- Full 3" diameter diaphragm sensing area
- Integral closed position locking device
- Mounts to existing transmitter isolation knife gate flange pattern



**Description:**

The Figure 115 B is a quarter turn ball valve of transmitter isolation design that was created to replace leaky knife gate valves. It is an all 316 stainless steel valve with 50 / 50 SS and TFE seats. Seals are PTFE. Quarter turn handle allows quick operation and the multiple purge ports provide easy body cleaning and calibration in place. Bubble tight shutoff as valve exceeds both the API 598 and Class VI ANSI/FCI 70-2-1976 standards. A shaved ball and an additional purge port allow for external exhaust purging.

[www.trans-valve.com](http://www.trans-valve.com)

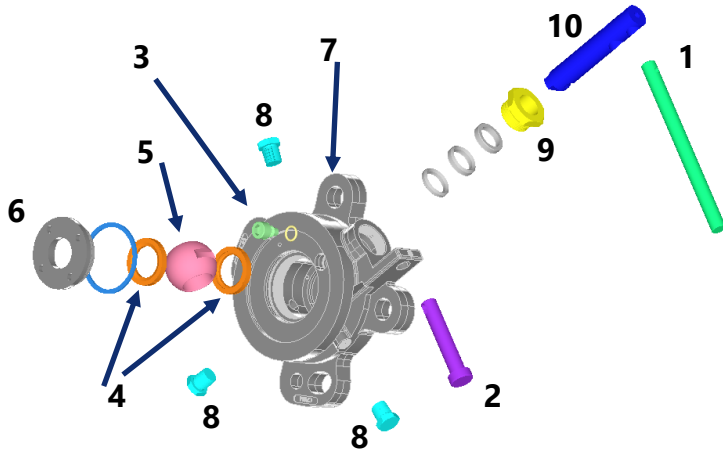


**TRANS-VALVE**  
—SPECIALTY VALVES FOR INDUSTRY—



**TRANS-VALVE**  
—SPECIALTY VALVES FOR INDUSTRY—

## Figure 115 B Transmitter Isolation Ball Valve



#	Part	Material	Quantity
1	Handle	304 SS	1
2	Lockout Pin	304 SS	1
3	Stop Pin	304 SS	1
4	Seat	50% SS 50% TFE	2
5	Ball	ASTM A351 CF8M	1
6	Retainer	ASTM A351 CF8M	1
7	Body	ASTM A351 CF8M	1
8	1/4" NPT Plug	316 SS	3
9	Gland Nut	304 SS	1
10	Stem	ASTM A351 CF8M	1

### Specification:

Valve shall be a ball valve of transmitter isolation design with a 316 stainless steel body, a 3" sensing area and a 1" port in ball. 316 stainless steel ball is to be shaved on top and bottom to allow for external purging.

Valve is to have a tank side flange drilled and tapped to accommodate a 26° to 28° offset (knife gate) flange pattern. Valve has a pressure rating of 275 PSI. Valve shall have a stainless steel locking closed handle.

Valve to have a total of 3 ports: (2) are functional external exhaust ports and (1) is a functional calibration port. All ports are 1/4" NPT and use MNPT plugs made of 316 stainless steel. The Calibration port is to be clearly marked on the valve body with the letter C. The other 2 ports are external exhaust ports and either can be used, but not simultaneously.

Seats to be made of 50% SS powder and 50% TFE. Seats designed for momentary, intermittent purge with steam rated at 250 SWP. Seats to be made of PTFE. Retainer gasket and packing in Teflon. Valve tested to exceed both the API 598 and Class VI ANSI / FCI 70-2-1976 standards.

[www.trans-valve.com](http://www.trans-valve.com)



**TRANS-VALVE**  
—SPECIALTY VALVES FOR INDUSTRY—