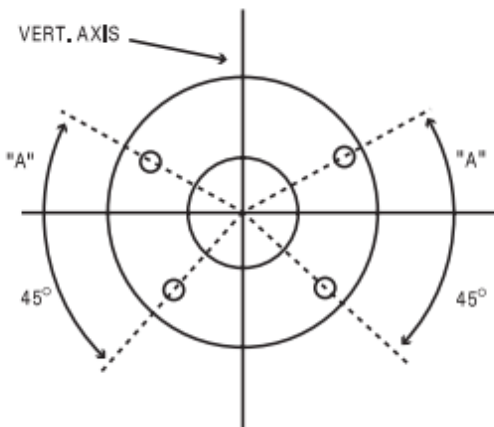




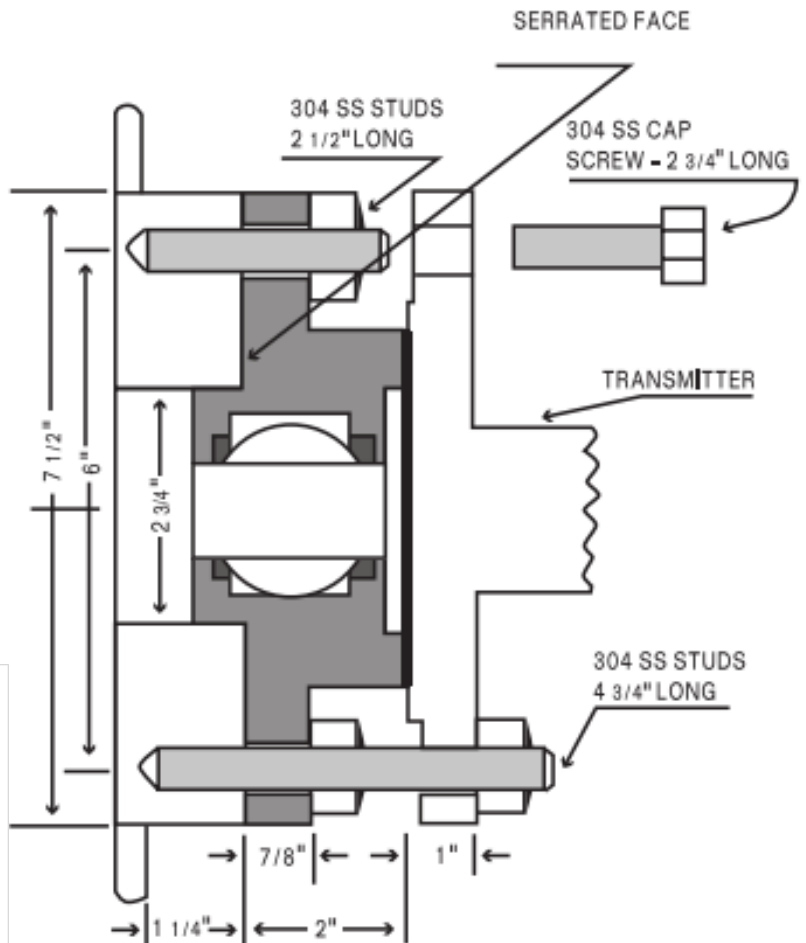
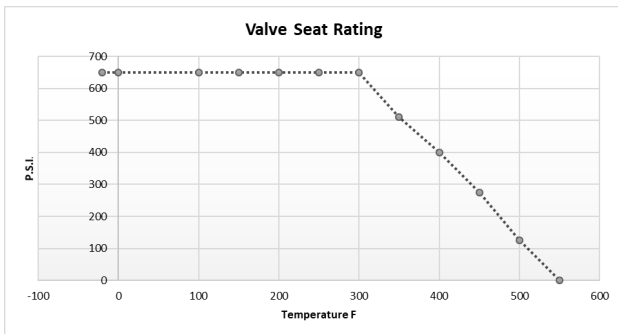
### Fig. 115 B Technical and Dimensional Data:

*Fig. 115 B has a stud bolt orientation designed for knife gate valve replacement.*

- Valve pressure rated to 275 PSI
- Valve seats are 50% SS and 50% TFE and designed for momentary, intermittent purge with steam rated at 250 SWP and are temperature rated -20 degrees F to 550 degrees F



MANUFACTURERS	ANGLE "A"
TRANS-VALVE	26°
FABRI	25°
DEZURIK	27°

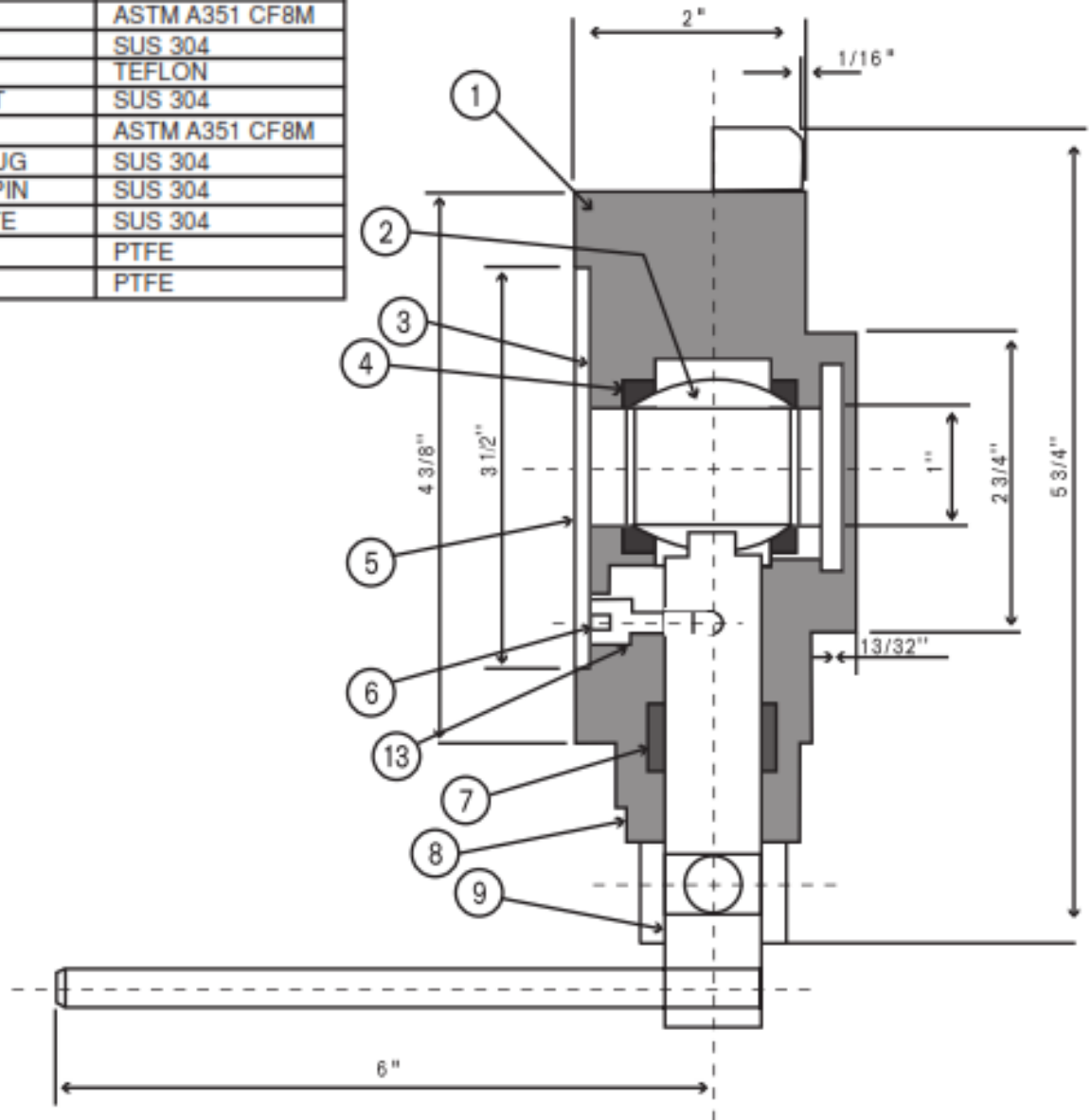




**TRANS-VALVE**  
—SPECIALTY VALVES FOR INDUSTRY—

**Figure 115 B**  
**Transmitter Isolation**  
**Ball Valve**

ITEM	DESCRIPTION	MATERIAL
1	BODY	ASTM A351 CF8M
2	BALL	ASTM A351 CF8M
3	RETAINER GASKET	TEFLON
4	SEAT	RTFE
5	RETAINER	ASTM A351 CF8M
6	STOP PIN	SUS 304
7	PACKING	TEFLON
8	GLAND NUT	SUS 304
9	STEM	ASTM A351 CF8M
10	1/4 NPT PLUG	SUS 304
11	LOCKOUT PIN	SUS 304
12	NAME PLATE	SUS 304
13	SEAL	PTFE
14	SEAL	PTFE





**TRANS-VALVE**  
—SPECIALTY VALVES FOR INDUSTRY—

**Figure 115 B**  
**Transmitter Isolation**  
**Ball Valve**

