

futureplan

FuturePlan Consulting (FPC), LLC Project Portfolio

Cape Coral Multimodal Transportation Master Plan, Cape Coral, Florida

FuturePlan Consulting recently served as modeling subconsultant on the Cape Coral Multimodal Transportation Master Plan in Southwest Florida. The Master Plan will guide future decisions by the City on transportation investments through adopted project, policy, and program recommendations. The Master Plan was developed through a technical analysis of crash, demographic, land use, and transportation data along with community and stakeholder input. The Master Plan provides a strategic 20-year vision for creating a safe multimodal transportation network in Cape Coral for people of all ages and abilities. FuturePlan Consulting provided the study team with information on anticipated growth in development, traffic, and congestion to help target project proposals to the areas where these would be most relevant. FuturePlan Consulting also developed a unique approach to simulate motorized vehicle trip diversion from roadways proposed for a future pedestrian-oriented focus.



Client Contact – City of Cape Coral Public Works Department: Laura H. Dodd, AICP, Principal Planner, (239) 574-0425, ldodd@capecoral.gov

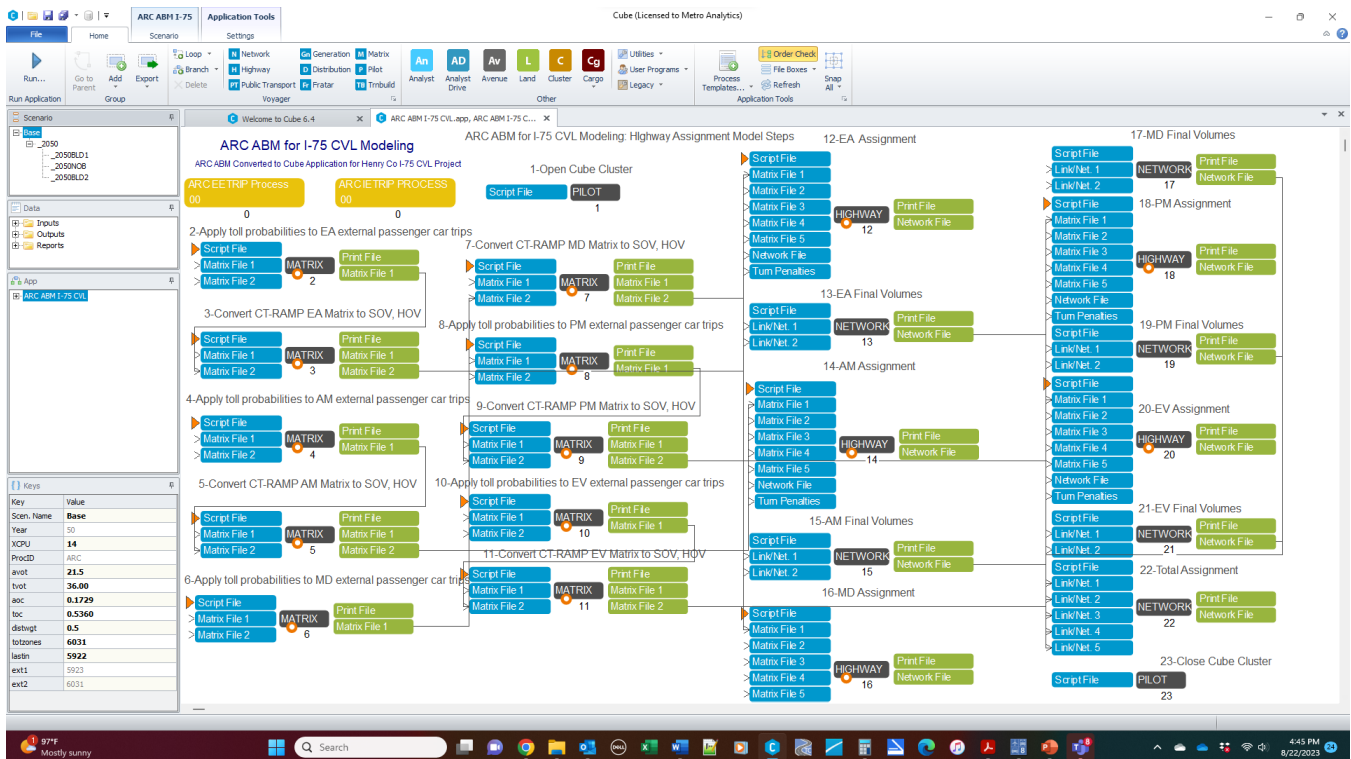
FuturePlan Consulting, LLC | 1256 Walden Rd | Tallahassee, FL 32317 | t 850-877-1995 | c 850-570-8958

<https://futureplan.us/>

futureplan

Interstate 75 Commercial Vehicle Lanes, Atlanta, Georgia

FuturePlan Consulting recently served as modeling subconsultant on a study of truck only lanes proposed for a section of Interstate 75 in the suburbs of Atlanta, Georgia. The Georgia Department of Transportation had previously approved construction of these commercial vehicle lanes (CVL); however, Henry County wished to conduct an additional study to determine the feasibility of extending the CVLs further north to the intersection of I-75 and I-675. The Atlanta Regional Commission (ARC) uses a complex activity-based model that requires a large amount of file storage and computer run times. FuturePlan Consulting devised a streamlined approach to using the ARC model since the study was focused on the I-75 corridor near the model's external boundary and only external and truck trips would be impacted by the alternatives under consideration. Even with this streamlined Cube application, depicted below, there were still 30 model steps required to test each alternative under consideration.

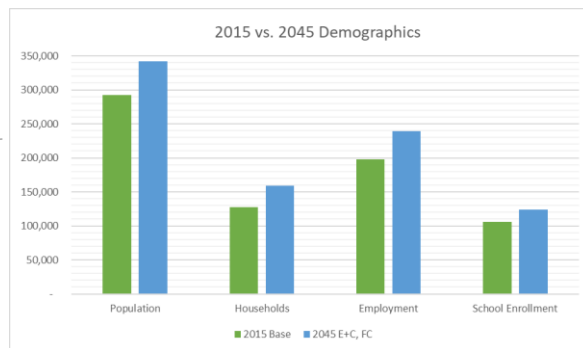


Client Contact – Henry County Government: Sam Baker, AICP, Sr. Transportation Planner, (770) 288-7669, sbaker@co.henry.ga.us

futureplan

Montgomery MPO 2045 LRTP, Montgomery-Prattville, Alabama

FuturePlan Consulting was modeling subconsultant on the Montgomery Metropolitan Planning Organization's (MPO) 2045 Update to their Long-Range Transportation Plan. Key responsibilities for FuturePlan include leading model development and validation of a Cube Voyager transportation planning model, applying the model for future conditions, recommending needed future transportation projects and evaluating project performance for prioritization. The Montgomery MPO covers a three-County region, including the crossroads of I-65, I-85, US 31, US 80, US 82, US 231, and US 331. Transportation challenges include a large transit dependent population, significant urban sprawl, multiple tolled and un-tolled river crossings, and limited funding for new mobility needs.

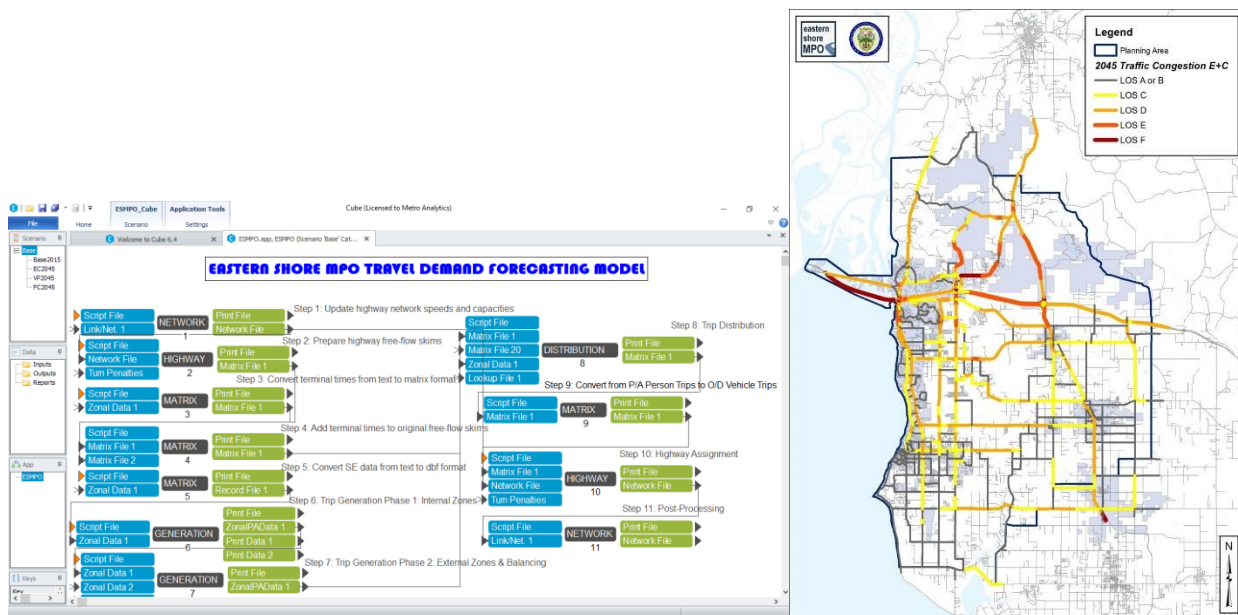


Client Contact – Montgomery Metropolitan Planning Organization (MPO): Robert Smith, MPO Director, Montgomery MPO, (334) 625-2218, rsmith@montgomeryal.gov

futureplan

Eastern Shore MPO 2045 LRTP, Fairhope-Daphne, Alabama

FuturePlan Consulting recently served as modeling subconsultant on the Eastern Shore Metropolitan Planning Organization's (MPO) 2045 Update to their Long-Range Transportation Plan. Key responsibilities for FuturePlan Consulting included support on socioeconomic data development, leading model development and validation of a Cube Voyager transportation planning model, applying the model for future conditions, recommending needed future transportation projects and evaluating project performance for funding in the cost feasible plan. Streetlytics data were used to update assumptions on external travel patterns. The model was enhanced from a vehicle trip model to a person trip model with the addition of a new auto occupancy step. Standard ALDOT area types, facility types, and related capacities were assigned to an enhanced model network with a complete review of every zone centroid and connector in the network. Techniques were employed during model validation to address the large number of daily work trips that exit the model study area for large employers across the bay in Mobile, Alabama. The model structure is depicted below, along with a map of projected 2045 levels-of-service, resulting from the model.

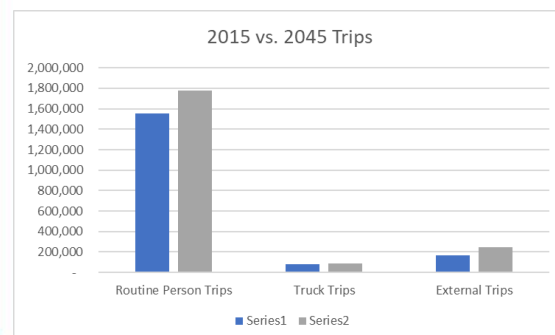
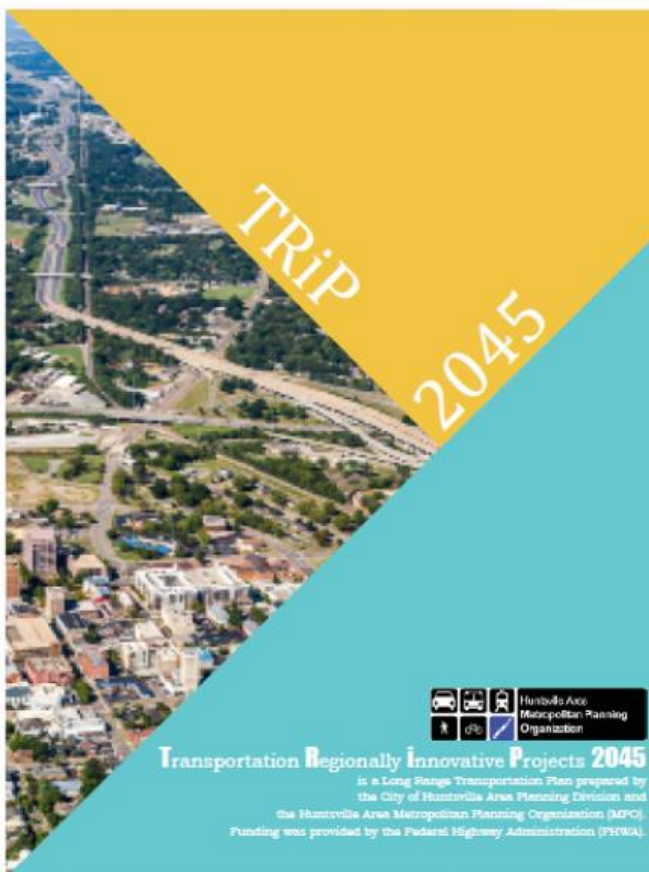


Client Contact – Eastern Shore Metropolitan Planning Organization (MPO): Sarah Hart Sislak, MPO Director, Eastern Shore MPO, (251) 990-4640, SHART@baldwincountyal.gov

futureplan

Huntsville MPO 2045 LRTP, Huntsville, Alabama

FuturePlan Consulting served as modeling subconsultant on the Huntsville Area Metropolitan Planning Organization's (MPO) 2045 Update to their Long-Range Transportation Plan ("TRiP 2045"). Responsibilities for FuturePlan Consulting included calibration and validation of the MPO's Cube Voyager transportation planning model, model technical support, model troubleshooting, analyzing future demographic growth, forecasting external trips, and identifying needed transportation projects. FuturePlan has streamlined the previous MPO model structure to make it more user-friendly for MPO staff and updated model assumptions for compatibility with transferable model parameters from *NCHRP Report 716, Travel Demand Forecasting: Parameter and Techniques*. Rob Schiffer, President of FuturePlan Consulting, was subsequently selected to serve as Project Manager on a separate Regional Commuter Study focused on refining estimates of employment and travel patterns, focused on Federal workers in the Huntsville region and the Madison County Transportation Master Plan, focused on roadway needs in unincorporated areas outside the Huntsville city limits.



Client Contact – Huntsville-Area Metropolitan Planning Organization: Shontrill M. Lowe, Transportation Planner III, Huntsville-Area MPO, (256) 427-5117, shontrill.lowe@huntsvilleal.gov

FuturePlan Consulting, LLC | 1256 Walden Rd | Tallahassee, FL 32317 | t 850-877-1995 | c 850-570-8958

<https://futureplan.us/>

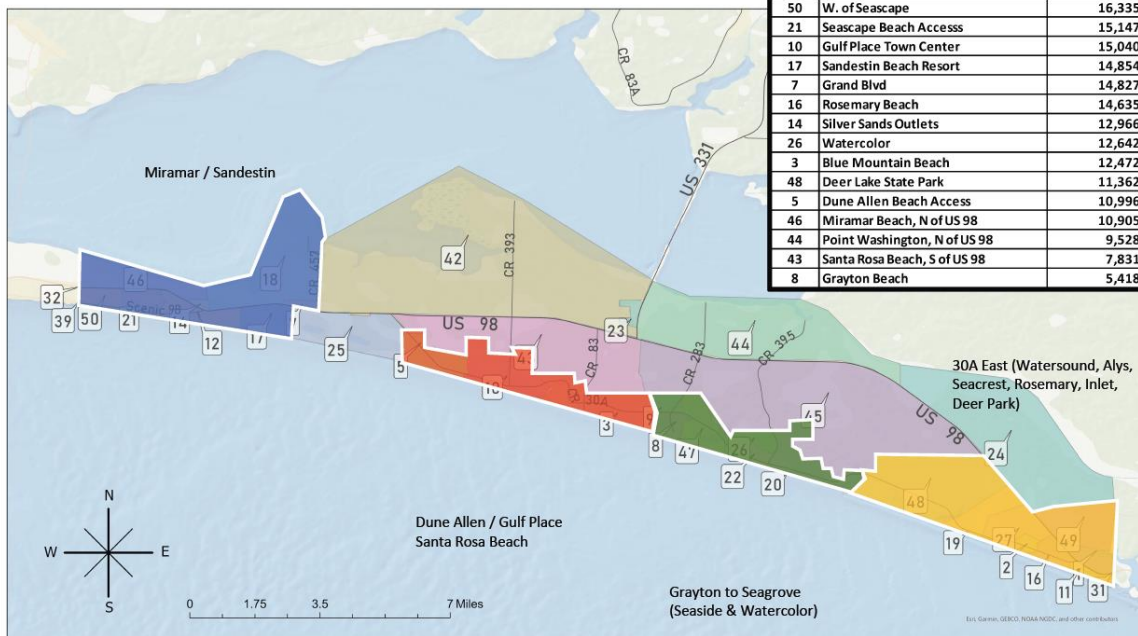
futureplan

Walton County Mobility Plan, DeFuniak Springs, Florida

FuturePlan Consulting is subconsultant to NUE Urban Concepts on a study to prepare a mobility plan and mobility fee for fast growing Walton County in Northwest Florida. FuturePlan Consulting is leading travel demand forecasting and travel behavior analysis using big data on trip Origin-Destination (O/D) patterns in combination with the area's regional travel model. Travel demand forecasting has been based on the Northwest Florida Regional Planning Model (NWFRPM) that covers three Transportation Planning Organizations and adjacent rural counties. The NWFRPM is being used to summarize demographic estimates and vehicle-miles traveled (VMT) for base year and horizon year 2040 conditions in Walton County. The model has also been used to identify potential future transportation projects for funding through a mobility fee. FuturePlan Consulting is also using big data from StreetLight InSight to estimate existing daily trip activity, seasonal variations in travel demand, O/D patterns, and the impacts of the COVID-19 pandemic on regional traffic patterns.

Streetlight Data for Walton County (2019)

South Walton County Mobility Zones



Client Contact – Walton County Planning Department: Kristen A. Shell, AICP, Planning Manager, Walton County Planning Department, (850) 267-1955, SheKristen@co.walton.fl.us

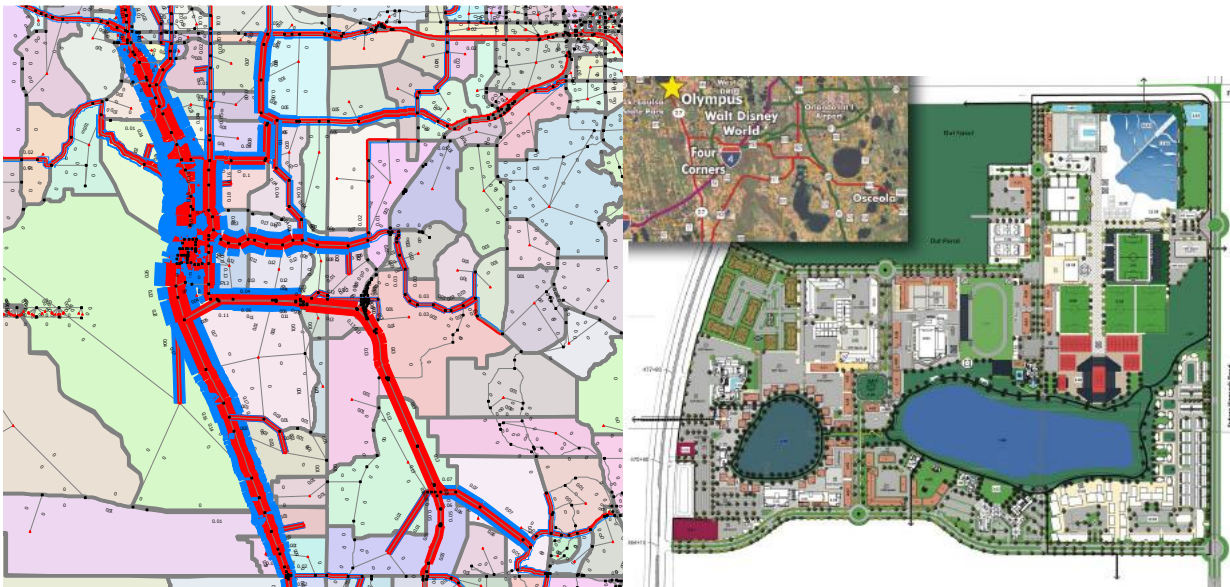
FuturePlan Consulting, LLC | 1256 Walden Rd | Tallahassee, FL 32317 | t 850-877-1995 | c 850-570-8958

<https://futureplan.us/>

futureplan

Olympus Sports Development Traffic Impact Study, Clermont, Florida

FuturePlan Consulting served as subconsultant to Dantin Consulting on a traffic impact study for the proposed Olympus Sports and Entertainment development, to be located along US 27 in Lake County, just south of Clermont, Florida. FuturePlan Consulting provided travel demand modeling services, simulating internal and external project traffic for the year 2025 using the Central Florida Regional Planning Model (CFRPM). Resulting traffic forecasts were used to identify impacts on existing and proposed future roadway corridors. The project required refinement of the CFRPM and coordination with multiple government agencies and representatives of adjacent properties also planned for future development.



Client Contact – Olympus Sports and Entertainment Group: Michael Carroll, Principal, Olympus Sports and Entertainment Group, (407) 733-1277, mjc@olympusorlando.com