

CONNECTIONS

Community Connections Darlington Quarterly Newsletter



What's New

Fall is a season of transformation, as nature sheds the old to prepare for the new. Trees drop their leaves, making space for the renewal of spring. This natural cycle mirrors the journey of what Community Connections Darlington has spent the last year traveling as it has transitioned to its own 501(c)(3).

Just as trees let go of their leaves, Community Connections Darlington has gradually shed its reliance on The First Church of God. Over the past year, we have come into our own and have branched out from those loving and well established roots that have made Community Connection's life and growth possible. The process hasn't been immediate—like the slow change of seasons— we have moved through each stage.

The latest milestone in this journey is securing the title to the community center's property. To this end, we are working with the First Church of God to transfer the title of the Crazy Hope Community Center to Community Connections Darlington. This transfer not only symbolizes our independence but also provides a solid foundation to move forward serving the community.

Our transition this past year has been much like the shift from fall to winter and winter to spring—a necessary shedding that leads to greater strength and new growth. As the season changes, Community Connections Darlington, also moves into a new phase, ready to flourish and serve. Just as the trees prepare for spring, our organization is primed for growth and is ready to deepen its impact in the community.

NEWSLETTER HIGHLIGHTS

What's New

Crazy Hope Community Center Update

Soup Kitchen Spotlight

Fundraisers

Connecting with the Community

Team Member Spotlight

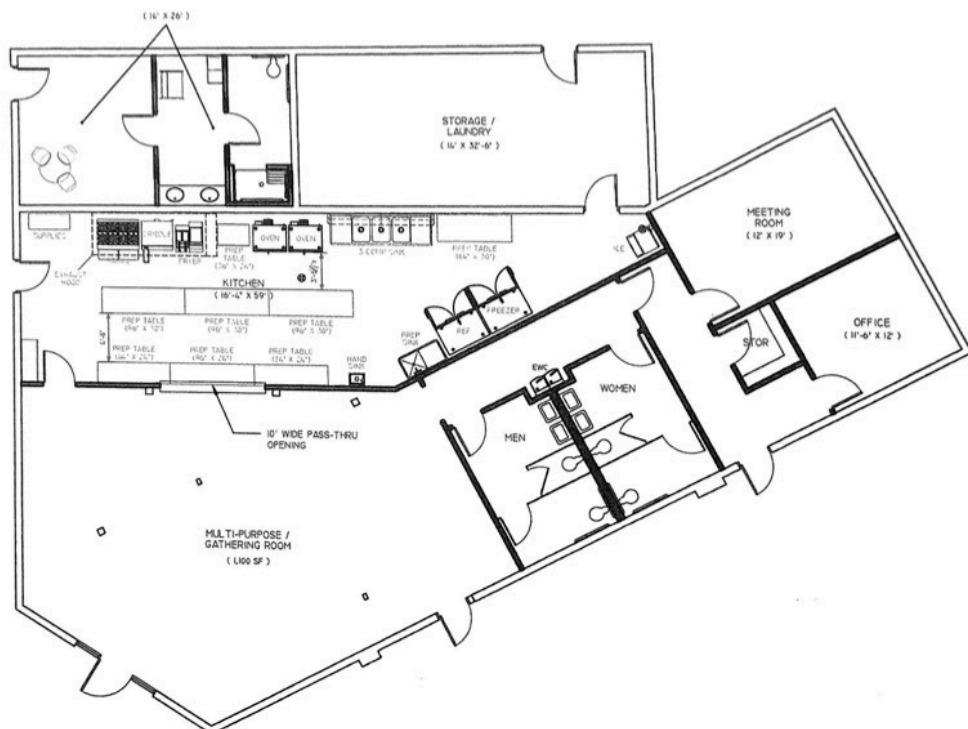
Financial Report

The logo for Crazy Hope Community Center is a circular emblem. The words "CRAZY HOPE" are arched across the top in a bold, sans-serif font. In the center, the word "COMMUNITY" is written in a large, bold, sans-serif font, and the word "center" is written below it in a smaller, cursive script. A blue cross is positioned at the bottom center of the emblem. Along the bottom inner edge of the circle, the text "transforming lives, with Jesus at the center." is written in a small, sans-serif font.

Everyone is eager to see progress being made at the center. However, sometimes things do not always go as planned, and sometimes progress is stalled. Delays are indeed frustrating, but renovations can often involve waiting for the right pieces to fall into place, so right now we're doing everything we can to ensure things move forward. While we wait, please know that we are not idly standing by. We are continuing to work in our community to reach those in the greatest need. We are also continue to raise funds in preparation for renovations to begin inside Crazy Hope.

Sometimes things move more slowly than planned, but we all know that it is not our timing that matters most but rather the Lord's, and we all know that He works all things for the ultimate good. Therefore, we wait patiently, and we appreciate your patience and understanding as we navigate the challenges that always come with progress. And, rest assured that we are just as committed as ever to transforming Crazy Hope into a space that will serve our community.

Phase 4 : Kitchen



P.O. Box 1344
Darlington, SC 29540

Connect with Community Connections Darlington



Soup Kitchen Spotlight

Thanks to our faithful teams of volunteers, the Saturday Soup Kitchen is helping many in our community. Here is what we have done January - September of 2024:

- served over 5, 032 meals
- helped over 1,353 people
- had over 425 brothers and sisters in Christ volunteer
- provided clothing, canned goods, vitamins, Narcan, resource cards, and devotionals

Many ask what we serve at the soup kitchen, and the answer to that is that our meals vary depending on our volunteers. Below are some of the meals our volunteers have served this past quarter.

- breakfast casserole, grits, fruit, muffins, and water
- sausage biscuits, hard boiled eggs, fruit, and water
- sausage, eggs, grits, fruit, and water
- breakfast casserole, grits, fruit, Pop-tarts, pb & j sandwiches, and chicken bog
- eggs, grits, sausage, bacon, muffins or donuts, SunnyD or orange juice, and water
- waffles, sausage, and water



 Community Connections Darlington

DOUBLE YOUR IMPACT!

WITH A \$50,000 MATCH!

Donations given as of June 1, 2024 will be matched up to a total of \$50,000! Help us double your donation!

DONATE NOW

P.O. Box 1344
Darlington, SC 29540

WWW.communityconnectionsdarlington.org

FALL Fundraiser!

Baked goods will also be available for purchase!

Chicken Bog Plates
(Chicken Bog, Green Beans, & Pickles)

November 14th
11AM - 2PM

We would love to deliver your lunch!
Lunch deliveries for 10+ plates.

Call or email your order today!
maface26@gmail.com
(843) 495-3433

Join us for Oliver Segar's delicious BBQ!

Connecting with the Community

- Kingdom Fishermen: Dargan Street Event, September 14
- Time To Connect with Various Community Organizations
 - Community-based Alliance of Rural Peer Support, Gregory Jacobs - July
 - Tower of Hope Consulting & Counseling Services, Dr. Dolores Bess - August
 - The Naomi Project, Joyce Ford - September



Team Member Highlight



Cherry Grove Missionary Baptist Church is located down the country road of Billy Farrow Highway and was formed in 1869 when 17 African American members of Swift Creek Baptist Church requested permission to form a church of their own. Their request was granted, and Swift Creek - Cherry Grove Baptist Church was formed. With the help of Reverend Billy Beck, this church became Cherry Grove Baptist Church.

Cherry Grove preaches the Gospel, seeks salvation for the lost, and extends the cause of mission and education. The church has a deep desire to help people. As a result, it has collected hygiene items, washcloths, and socks to donate to the homeless and the battered women's shelters. Seeing a need, the church then partnered with Harvest Hope to begin a food ministry that distributes food baskets the third Saturday of every month. The church also joined with Community Connections Darlington and serves at the Saturday Soup Kitchen.

Since 1981, Cherry Grove has held regular morning worship each Sunday at 10:00 AM and fulfillment Hour (Sunday School) at 9:00 AM. The church has a vibrant spiritual life and many ministries. Cherry Grove has had a glorious past, is experiencing a divine present, and looks forward to a bright future. They invite you to join them in person or on the web at <https://www.cherrygrovembc.org>.

Financial Report: June 1, 2024 - August 31, 2024

Previous Balance: \$ 40,444.35

Income: \$

- Donations: \$ 14,523,44

Expenses: \$ 9,825.03

- Utilities: \$ 348.22
- Supplies: \$ 736.19
- Web & Email Services: \$ 189.67
- Renovation Expenses: \$ 8,300.00
- Insurance: \$ 200.00
- Misc. Expenses: \$ 39.95

Investment CD: \$25,651.30

Balance: \$ 45,142.96



About Us

Vision: Transforming lives with Jesus at the center. Leaving a lasting and giving legacy that positively impacts the community of Darlington and provides by leading a model of caring and service that others can follow as they do God's work.

Mission: Meeting others where they are, providing a lasting and Godly sanctuary and save haven for the community that we serve. We also aim to continually strive to minister to the spiritual and physical needs while walking with people to where Jesus wants them to be.

Contact Us: Please email us at connect@communityconnectionsdarlington.org or by the telephone numbers below.

- Mark Face, Chairperson: 843-495-3433
- Chanel Muldrow, Vice Chairperson: 843-617-6726
- Lindsey Byrd, Treasurer: 843-307-2603
- Debra Wallace, Secretary: 843-992-0777

