

RioTinto

Rio Tinto Kennecott

Copperton Council

May 15, 2024

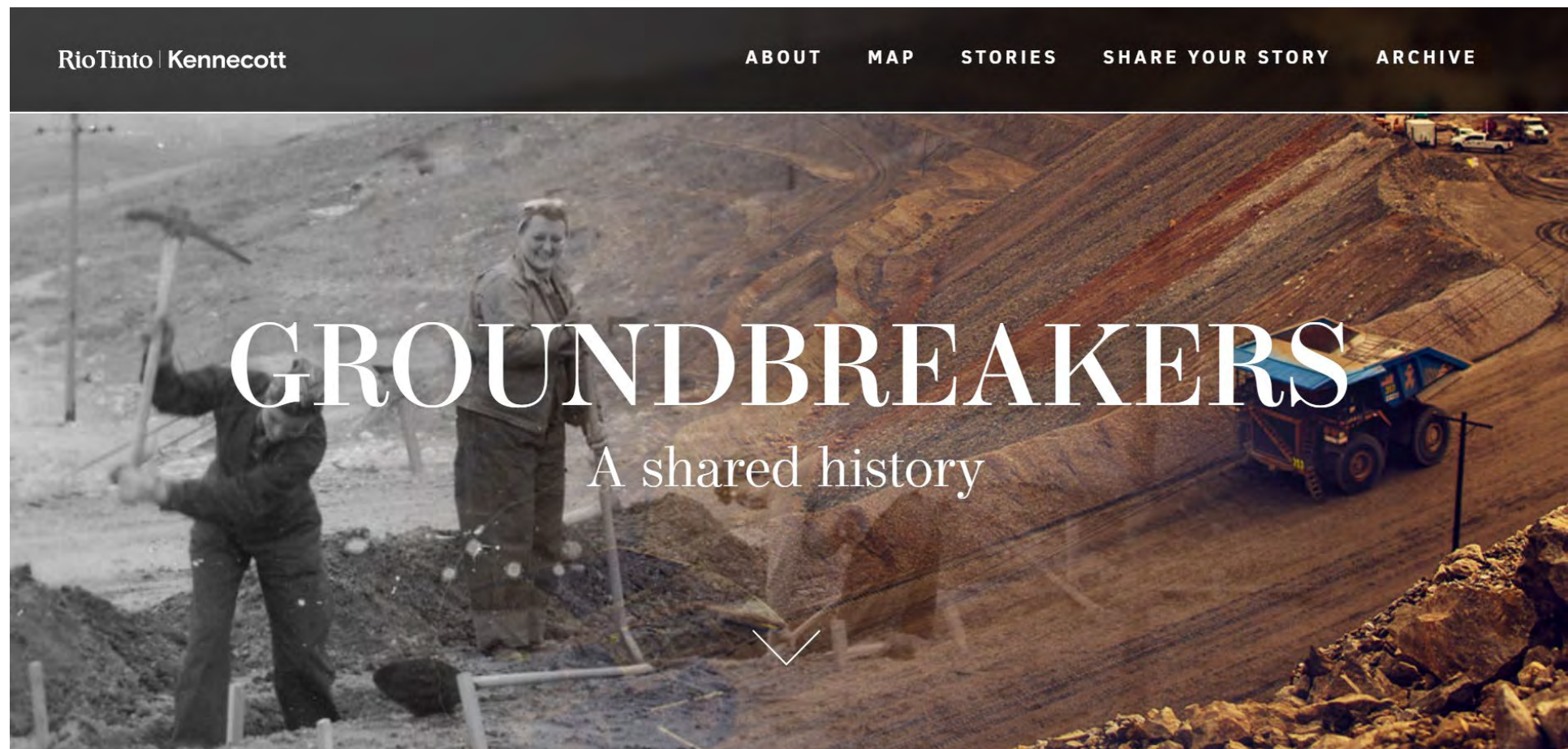


RioTinto
Kennecott

120

RioTinto
150

RioTinto



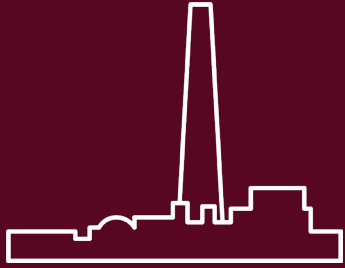
Groundbreakers collects and preserves the history of our community. It details stories of the towns and communities surrounding Bingham Canyon Mine, and the people that have made Kennecott the success that it is today.

kennecott-groundbreakers.com/

We're Leading Today

12%

of domestic copper production



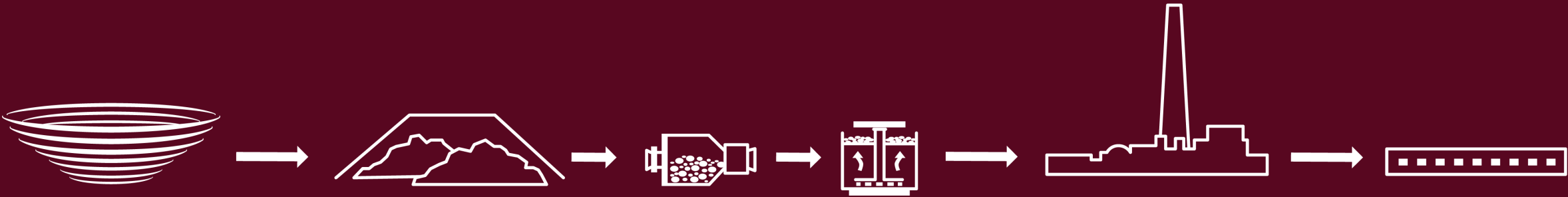
Largest U.S. smelter



U.S. copper producer with lowest carbon footprint



Enabling world-leading products



Unique integrated supply chain

Dust Management Strategy

Dust Management is critical part to our license to operate. A proper management plan ensures compliance, promotes our health, safety and environment goals, and ensures we are a good neighbor to the community.

There are three major components for our Dust Management Strategy:

Operations Strategy:

- Water Trucks
- Water Stands
- Area Priorities

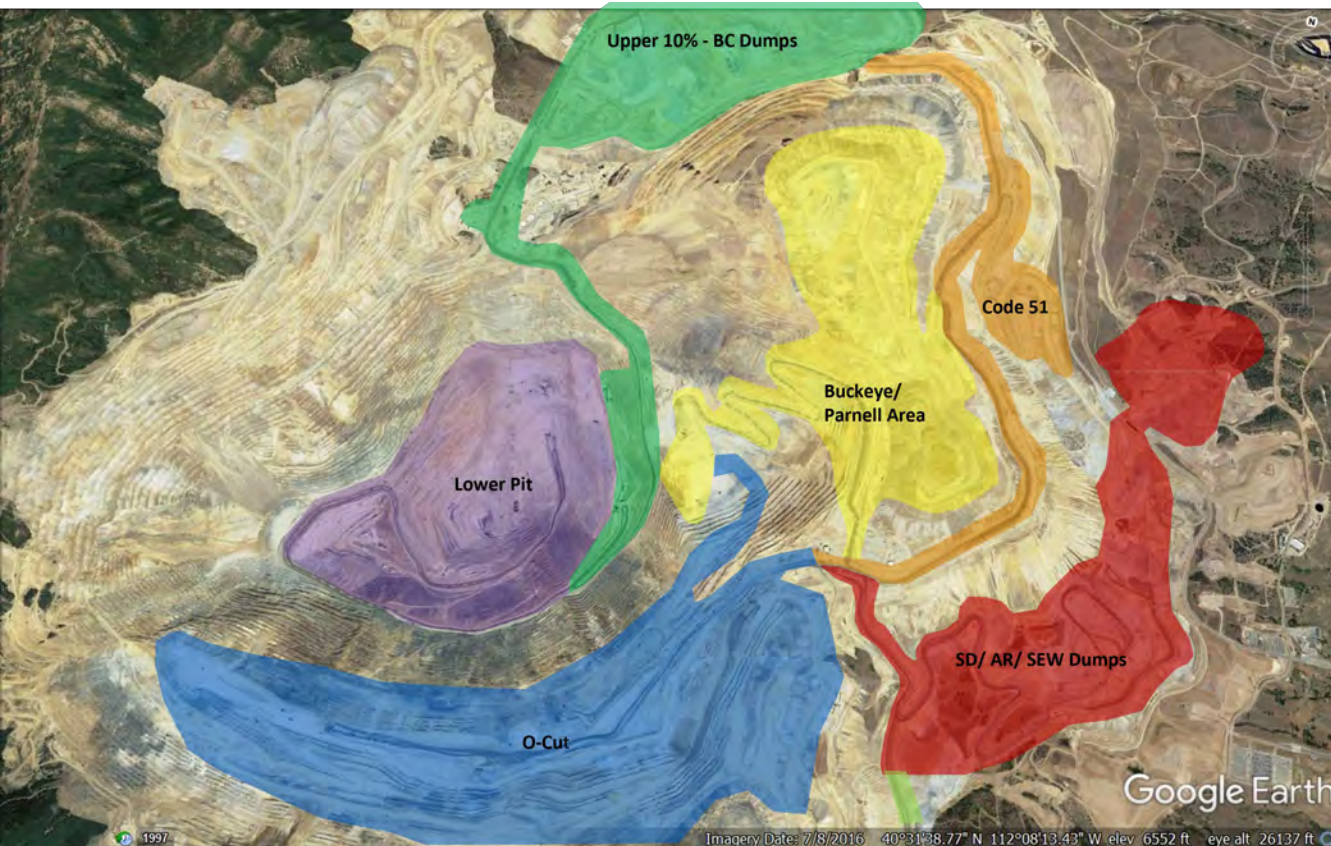
Water Supply Plan:

- Supply and Contingencies
- Chemical Suppression

Dust Spotting:

- Documentation
- Mitigation and Escalation

Dust Management Strategy



Area Priorities

- Efforts focus on orange, red, and green areas which are visible to community

Dust Spotters

- Hot seat spotters, binoculars always in spotter vehicle
- Detailed dust log
- Communication with Production Control, Supervisors, and water trucks

Dust Suppression Materials

- Surfactant - chemical added to water extends time roads stay wetness (*all active haul roads*)
- Sealant - Magnesium-Chloride applied to auxiliary roads

Concurrent Reclamation

- Vegetation planted when possible in operational areas

Fire Mitigation and Weed Management

- **Maintain Fire Breaks**

Fire breaks are features with limited or no vegetation that provide defensible space in the event of a wildfire.

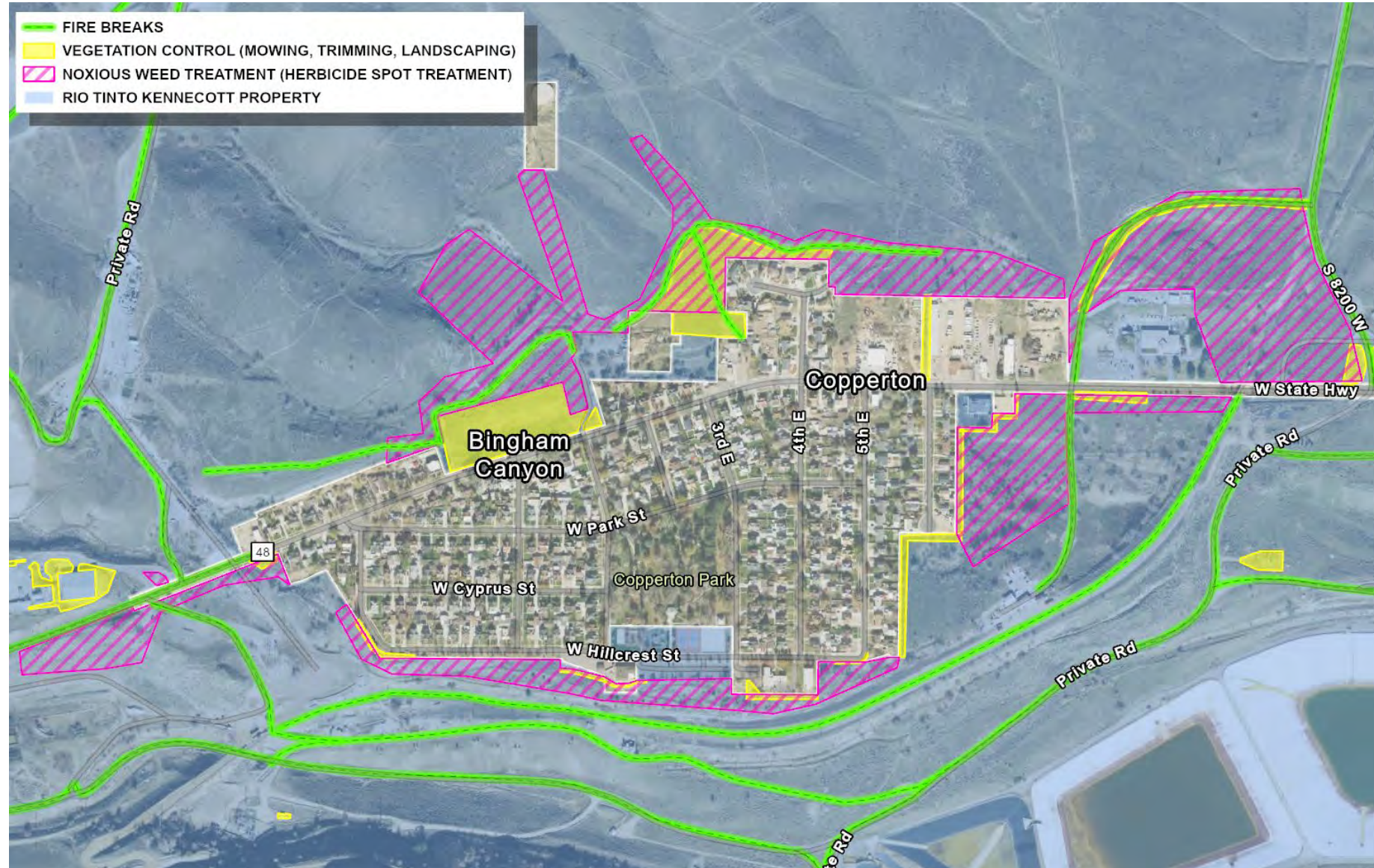
- **Vegetation Control**

Vegetation control such as trimming and mowing reduces fire risk and maintains aesthetics.

- **Noxious Weed Treatment**

Herbicide is selectively used against noxious invasive weeds such as thistle to limit growth and spread.

Work began in April and will continue through October.



Visitor Experience

- Self-guided tour - Bingham Canyon Mine, history, and operations exhibits
- Open seven days a week April - October
- Shuttles every 30 minutes, 9:30 a.m. to 2:30 p.m.
- Free admission for school groups
- Tickets \$6 each, children under five free
- All proceeds donated to Kennecott Charitable Foundation

[riotinto.com/en/operations/us/
kennecott/visitor-experience](https://riotinto.com/en/operations/us/kennecott/visitor-experience)

info@rtkvisitorexperience.com

RioTinto | Kennecott

Visitor Experience

**NOW
OPEN**

Schedule your 2024 tours
now



Local voices matter

Get involved

- Join our online survey program to help Rio Tinto Kennecott understand what's important to you and your community
- Earn donations for local community groups
- Surveys take 15 minutes and can be completed on your phone, tablet or computer
- 100% confidential - surveys are delivered by Voconiq and your personal details will not be disclosed

What's important to you?

Have your say at:

voconiqlocalvoices.com/riotinto/kennecott



voconiqlocalvoices.com/riotinto/kennecott



RioTinto | Kennecott

Local Supplier Portal

Where possible, we aim to add local businesses to our supply chain. Our Buy Local initiative helps businesses near our operations bid for work with us, by:

- Promoting upcoming work opportunities
- Enabling suppliers to register interest
- Providing a dedicated team to support local suppliers through our procurement processes

riotintoliprocurement.atl@riotinto.com

<https://www.riotinto.com/en/about/suppliers/local-suppliers/buy-local-north-america>

Rio Tinto | **Kennecott**

801-204-2070

rtkcomments@riotinto.com

Rio Tinto