



Crawford Road Project Goals



- **Improve traffic capacity**
- **Improve safety**
- **Improve drainage**
- **Transfer maintenance permanently to Argyle**





Crawford Road Project Goals



- **Improving traffic capacity:**
 - **Widen pavement from 22' to 26'**
 - **Add turn lanes at key intersections**
 - **Roundabout at John Paine**





Crawford Road Project Goals



- **Improving safety:**
 - **Eliminate obstacles in roadway clear zone**
 - **Improve guardrail**
 - **Add roundabout**





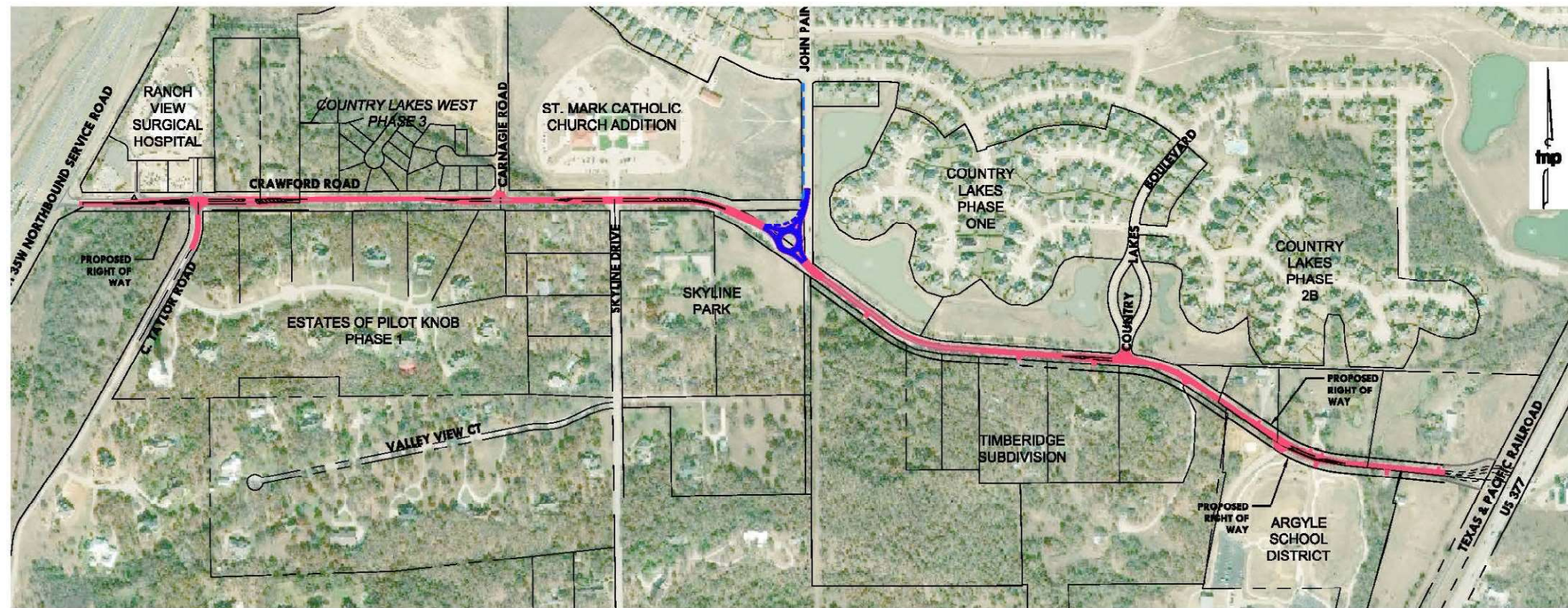
Crawford Road Project Goals



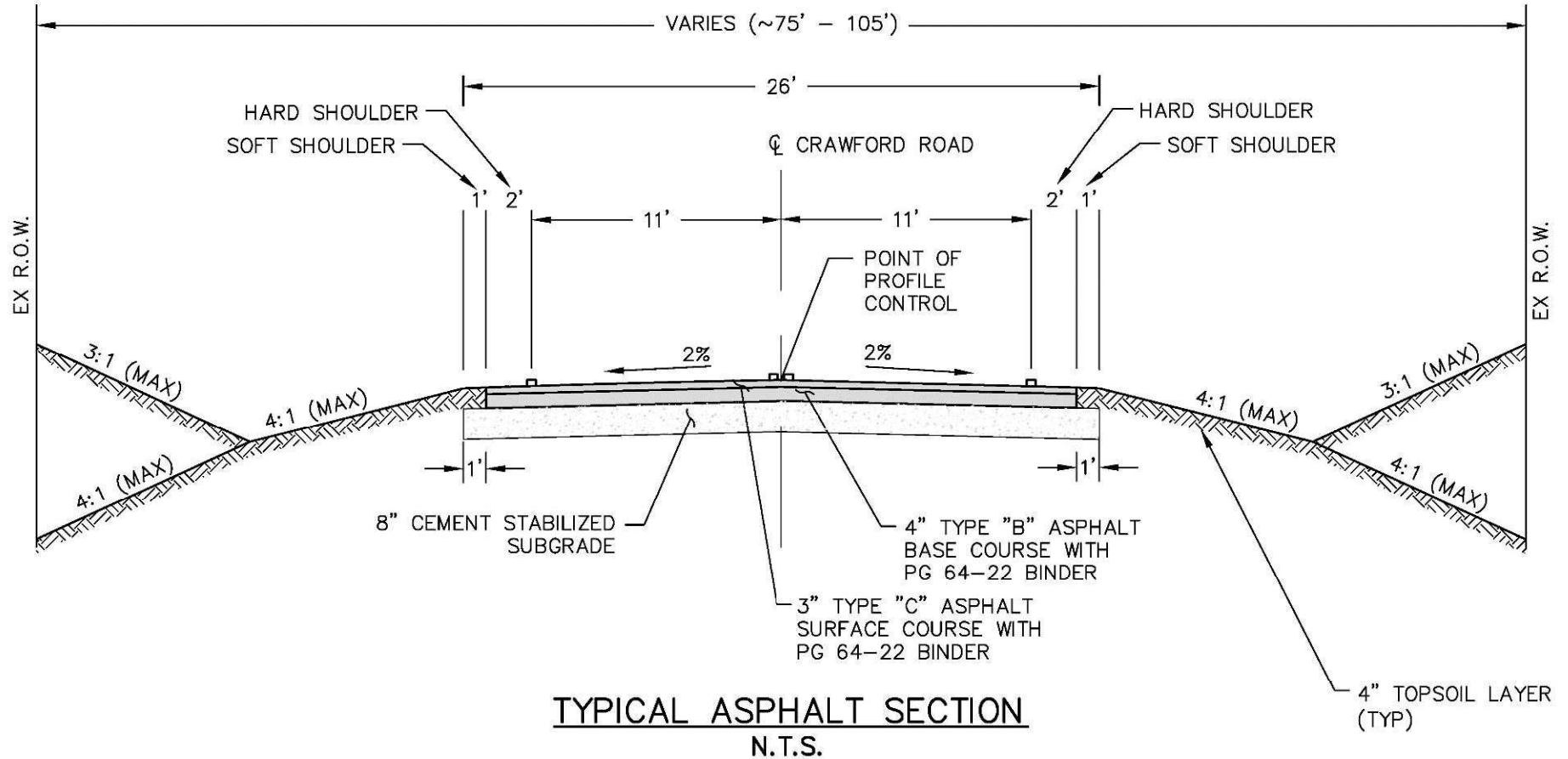
- **Improving drainage**
 - **Enlarge roadside ditches**
 - **Improve ditch slope**
 - **Replace poorly functioning culverts**



Project Concept Plan and Limits



Typical Section



Roundabout Plan





Why Build a Roundabout?

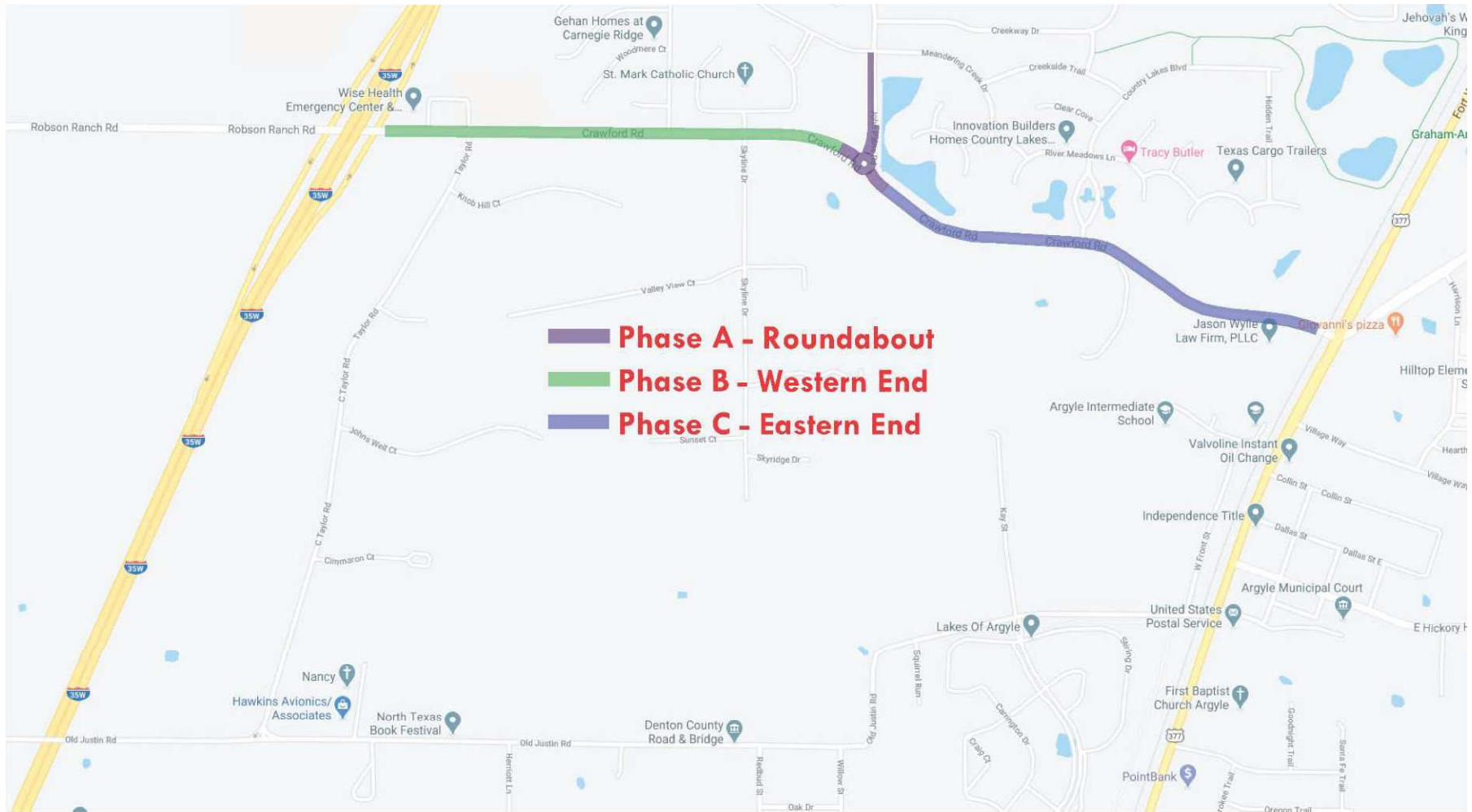


- **Benefits of a roundabout:**
 - **Improves safety by significant reduction in overall and injury collisions**
 - **Reduces delays, improves traffic flow**
 - **Aesthetics**
 - **Lower long term costs than signalization**





Preliminary Phasing Plan





Preliminary Traffic Plan – Phase A & B





Preliminary Traffic Plan – Phase C

