

## Intestinal Infections

Acute Intestinal Infections (A.I.I) are one of the primary causes of hospitalization in infectious disease departments. In accordance with the data provided by the contemporary literature the following bacterial and viral agents are the most often detectable and generally spread etiological agents of AII:

1. Bacterial agents:
  - Shigella species microorganisms and enteroinvasive E coli (EIEC);
  - Salmonella species microorganisms;
  - Thermophilic group of Campylobacter species microorganisms;
  - Enteropathogenic E coli (EPEC) and enteroaggregative E coli (EAEC);
2. Viral agents
  - Group A rotaviruses;
  - Genotype 2 noroviruses;
  - Group F adenoviruses (Types 40 and 41);
  - Astroviruses.

The following causative agents are less widely or not universally spread but are no less important for epidemic outbreaks:

1. Vibrio cholerae;
2. Yersinia pseudotuberculosis;
3. Clostridium difficile;
4. Enterotoxigenic E. coli (ETEC), Enterohemorrhagic E. coli (EHEC);
5. Genotype 1 Enteroviruses;
6. Group C Rotaviruses.

### Intestinal Infections Kits

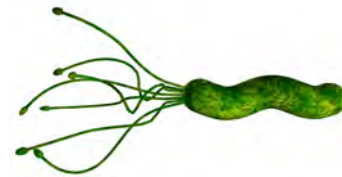
TV40-50FRT SA, RG, iQ, SC, MX, A, B	<b>Rotavirus/Norovirus/Astrovirus Real-TM</b> Complete Real Time Test with Ribo-Sorb extraction kit	R	€€	50	5 x10 <sup>2</sup> copies/ml
V40-50FRT SA, RG, iQ, SC, MX, A, B	<b>Rotavirus/Norovirus/Astrovirus Real-TM</b> Real Time Amplification kit	R	€€	50	5 x10 <sup>2</sup> copies/ml
TB44-50FRT SA, RG, iQ, SC, MX, A, B	<b>Shigella/Salmonella/Campylobacter Real-TM</b> Complete Real Time Test with DNA-Sorb-B extraction kit	R	€€	50	5 x10 <sup>2</sup> copies/ml
B44-50FRT SA, RG, iQ, SC, MX, A, B	<b>Shigella/Salmonella/Campylobacter Real-TM</b> Real Time Amplification kit	R	€€	50	5 x10 <sup>2</sup> copies/ml
TB45-50FRT SA, RG, iQ, SC, MX, A, B	<b>A.I.I. (Acute Intestinal Infections) Real-TM</b> Complete Real Time Test with Ribo-Sorb extraction kit	R	€€	50	5 x10 <sup>2</sup> copies/ml
B45-50FRT SA, RG, iQ, SC, MX, A, B	<b>A.I.I. (Acute Intestinal Infections ) Real-TM</b> Real Time Amplification kit	R	€€	50	5 x10 <sup>2</sup> copies/ml
TB62-50FRT SA, RG, iQ, MX, SC, A, B	<b>Escherichioses Screen &amp; Diff Real-TM</b> Multiplex RT-PCR detection and identification E.coli (EPEC, ETEC, EIEC, EHEC, and EAgEC)	R	€€	50	5 x10 <sup>2</sup> copies/ml
B62-50FRT SA, RG, iQ, MX, SC, A, B	<b>Escherichioses Screen &amp; Diff Real-TM</b> Real Time Amplification kit	R	€€	50	5 x10 <sup>2</sup> copies/ml
B64-50FRT SA, RG, iQ, SC, MX, A, B	<b>Yersinia enterocolitica/Y.pseudotuberculosis Real-TM</b> Real Time Amplification kit	R	€€	50	5 x10 <sup>2</sup> copies/ml
B88-100FRT SA, RG, iQ, SC, MX, A, B	<b>Aerobic complex Real-TM</b> RealTimeAmplification kit for detection of Enterobacteriaceae (E. coli, Klebsiella spp, Proteus spp, Streptococcus spp)	R	€€	100	
B-1972-100FRT	<b>Clostridium difficile + ToxA + ToxB Real-TM</b> <span style="color: red;">NEW</span> Real Time Amplification kit	R		100	
B1766-96FRT	<b>Enterobacterium spp. / Klebsiella Real-TM</b> <span style="color: red;">NEW</span> Real Time Amplification kit	R		100	
B-1771-96FRT	<b>Serratia spp. Real-TM</b> <span style="color: red;">NEW</span> Real Time Amplification kit	R		100	
B1769-96FRT	<b>Proteus Real-TM</b> <span style="color: red;">NEW</span> Real Time Amplification kit	R		100	

## Intestinal Infections Kits

TB35-50FRT SA, RG, IQ, SC, MX, A, B, LC	<b>Campylobacter species Real-TM</b> Complete Real Time Test with DNA-Sorb-B extraction kit	R	€€	50	5 x10 <sup>2</sup> copies/ml
B35-50FRT SA, RG, IQ, SC, MX, A, B, LC	<b>Campylobacter species Real-TM</b> Real Time Amplification kit	R	€€	50	5 x10 <sup>2</sup> copies/ml
TB58-50FRT SA, RG, IQ, SC, MX, A, B, LC	<b>Cronobacter sakazakii Real-TM</b> Complete Real Time Test with DNA-Sorb-B extraction kit	R	€€	50	5 x10 <sup>2</sup> copies/ml
B58-50FRT SA, RG, IQ, SC, MX, A, B, LC	<b>Cronobacter sakazakii Real-TM</b> Real Time Amplification kit	R	€€	50	5 x10 <sup>2</sup> copies/ml
TB12-50FRT RG, IQ, SC, MX, A, B	<b>Shigella Spp &amp; EIEC Real-TM</b> Complete Real Time Test with DNA-Sorb-B extraction kit	R	€€	50	5 x10 <sup>2</sup> copies/ml
B12-50FRT SA, RG, IQ, SC, MX, A, B	<b>Shigella Spp &amp; EIEC Real-TM</b> Real Time Amplification kit	R	€€	50	5 x10 <sup>2</sup> copies/ml
TB59-50FRT SA, RG, IQ, SC, MX, A, B	<b>EHEC Real-TM</b> Complete Real Time Test with DNA-Sorb-B extraction kit	R	€€	50	5 x10 <sup>2</sup> copies/ml
B59-50FRT SA, RG, IQ, SC, MX, A, B	<b>EHEC Real-TM</b> Real Time Amplification kit	R	€€	50	5 x10 <sup>2</sup> copies/ml
TB11-50FRT SA, RG, IQ, SC, MX, A, B, LC	<b>Salmonella species Real-TM</b> Complete Real Time Test with DNA-Sorb-B extraction kit	R	€€	50	5 x10 <sup>2</sup> copies/ml
B11-50FRT SA, RG, IQ, SC, MX, A, B, LC	<b>Salmonella species Real-TM</b> Real Time Amplification kit	R	€€	50	5 x10 <sup>2</sup> copies/ml
B63-50FRT SA, RG, B, SC	<b>Salmonella Diff Real-TM</b> Real Time Amplification kit for detection and differentiation of <i>S. typhi</i> , <i>S. paratyphi</i> , <i>Salmonella</i> H1 flagellar antigen types ( <i>S. stanley</i> , <i>S. isangi</i> , <i>S. muenchen</i> , <i>S. gaminara</i> , <i>S. utrecht</i> )	R		50	
V27-50FRT SA, RG, B, SC	<b>Norovirus GI / GII Real-TM</b> <b>NEW</b> Real Time Amplification kit	R	€€	50	
V45-50FRT SA, RG, B	<b>Rotavirus / Norovirus GI/GII / Astrovirus / Adenovirus Real-TM</b> <b>NEW</b> Real Time Amplification kit	R		50	
B45-50FRT SA, RG, B	<b>Shigella spp + EIEC / Salmonella spp / EHEC / Campylobacter spp Real-TM</b> Real Time Amplification kit	R		50	
B1767-96FRT	<b>Enterococcus faecalis/faecium Real-TM</b> <b>NEW</b> Real Time Amplification kit	R		96	
B1743-96FRT	<b>Shigella dysenteriae Real-TM</b> <b>NEW</b> Real Time Amplification kit	R		96	
B1745-96FRT	<b>Salmonella typhi Real-TM</b> <b>NEW</b> Real Time Amplification kit	R		96	
B-167-100F	Enterococcus faecalis/faecium 402/220 IC <b>NEW</b>	A		110	
B-168-100F	Escherichia coli 405/220 IC <b>NEW</b>	A		110	
B-142-100F	Shigella spp. 333/747 IC <b>NEW</b>	A		110	

## Helicobacter Pylori

*Helicobacter pylori* is a gram-negative bacillus responsible for one of the most common infections found in humans worldwide. It's usually found in the stomach.

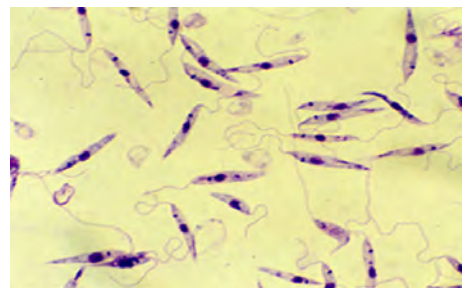


### Helicobacter Pylori Kits

TB9-50FRT SA, RG, iQ, SC,MX, A,B,LC	<b>H.pylori Real-TM</b> Complete Real Time Test with DNA-Sorb-B extraction kit	R	€€	50	1 x10 <sup>3</sup> copies/ml
B9-50FRT SA, RG, iQ, SC,MX, A,B,LC	<b>H.pylori Real-TM</b> Real Time Amplification kit	R	€€	50	1 x10 <sup>3</sup> copies/ml
B-118-50R	Helicobacter pylori <b>NEW</b>	A		55	1 x10 <sup>3</sup> copies/ml
B-118/3-50R	Helicobacter pylori cag A <b>NEW</b>	A		55	
B-118/4-50R	Helicobacter pylori vac A <b>NEW</b>	A		55	
B-118/5-50R	Helicobacter pylori ice A <b>NEW</b>	A		55	
B-118/6-50R	Helicobacter pylori bab A <b>NEW</b>	A		55	

## Dangerous microorganisms and parasites

Parasites are one of the four main agents of infection known to man, the other three being bacterial, fungal and viral. The diseases are less prevalent in temperate climates, partly because of the occurrence of a cold season, which controls the insect population by forcing hibernation. Insects such as mosquitoes and flies are one of the most common disease carrier. These insects may carry a parasite, bacteria or virus that is infectious to humans and animals.



### Leishmania Kits

N3-50FRT SA, RG, iQ, SC,MX, A	<b>Leishmania spp. Real-TM</b> Real Time Amplification kit	R		50	1 x10 <sup>3</sup> copies/ml
----------------------------------	---	---	--	----	------------------------------

### Zika Virus Kits

V73-50FRT SA, RG, iQ, SC,MX, A	<b>Zika Virus Real-TM</b> Real Time Amplification kit	R	€€	50	5 x10 <sup>2</sup> copies/ml
-----------------------------------	--	---	----	----	------------------------------

### Yellow fever Kits

H2461-50FRT SA, RG, iQ, SC,MX, A	<b>Yellow Fever Virus Real-TM</b> Real Time Amplification kit	R	€€	50	
-------------------------------------	--	---	----	----	--

### Rickettsia Kits

H2741-50FRT SA, RG, iQ, SC,MX, A	<b>Rickettsia conorii Real-TM</b> Real Time Amplification kit	R	€€	50	
-------------------------------------	--	---	----	----	--

### Diphtheria Kits

B2842-50FRT SA, RG, iQ, SC,MX, A	<b>Corynebacterium diphtheriae / tox-genes Real-TM</b> Real Time Amplification kit	R		50	
-------------------------------------	---	---	--	----	--

## Pestis

*Yersinia pestis* is a Gram-negative rod-shaped bacterium. It is a facultative anaerobe able to infect humans and other animals. Many evidence suggest that it was a contributing factor in many plagues throughout human history. The reservoir commonly associated with *Y. pestis* is several species of rodents (marmot, rats).

### Pestis Kits

B79-50FRT SA, RG, A, iQ, SC, MX, B, A, LC	<b>Yersinia pestis Real-TM</b> Real Time Amplification kit	R	€€	50	5 x10 <sup>3</sup> copies/ml
--	---	---	----	----	------------------------------