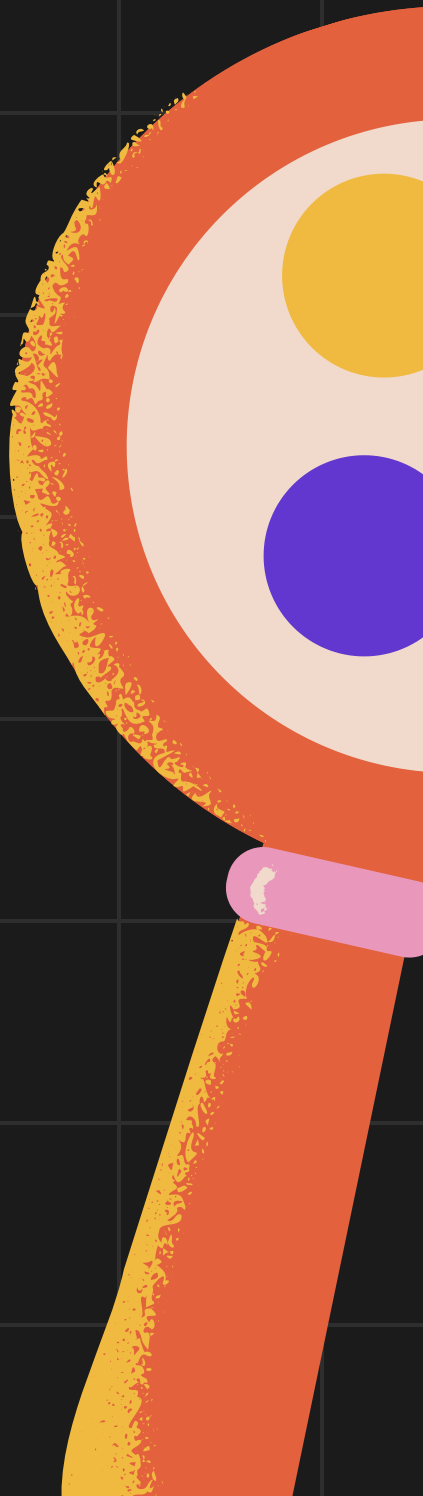
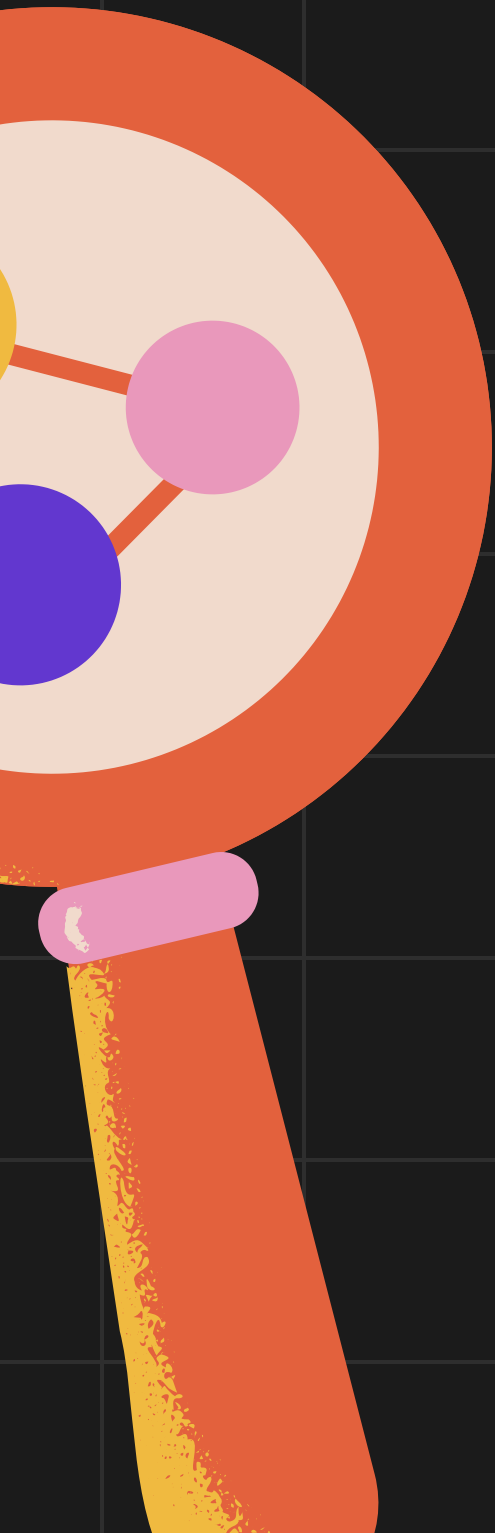
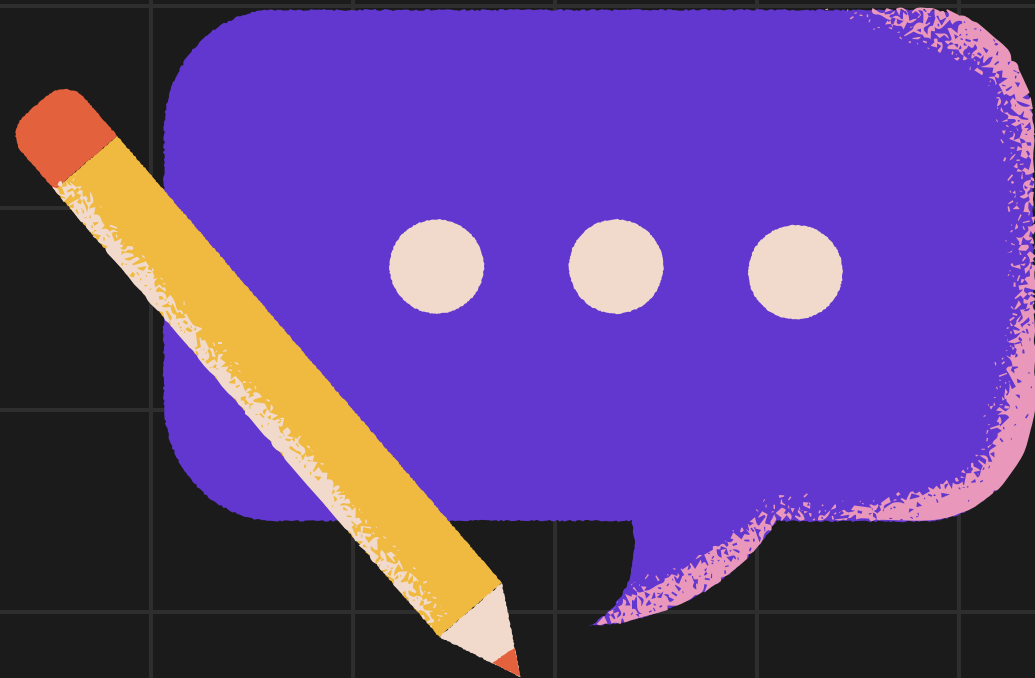




MEAL DPRO & POWER BI

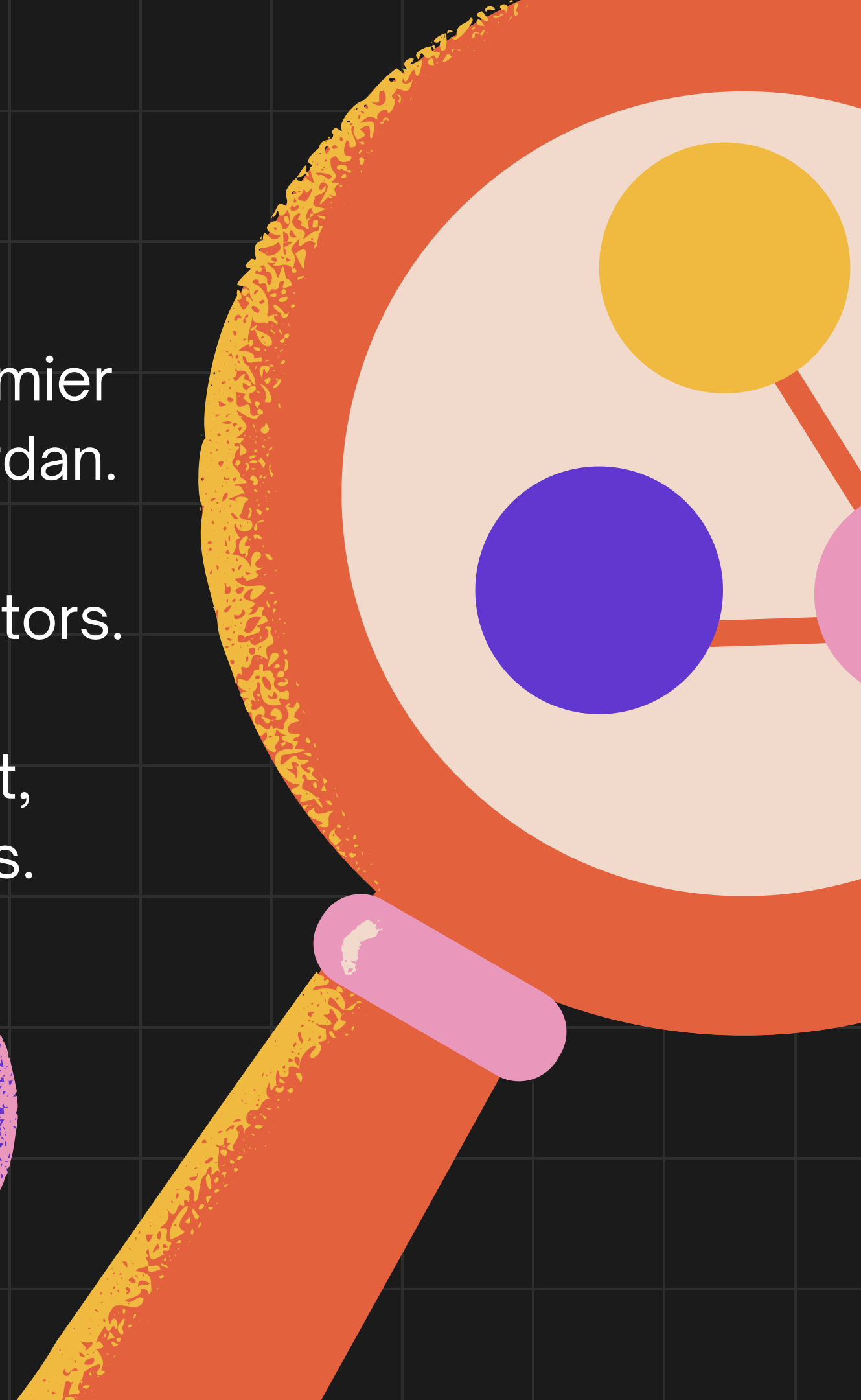
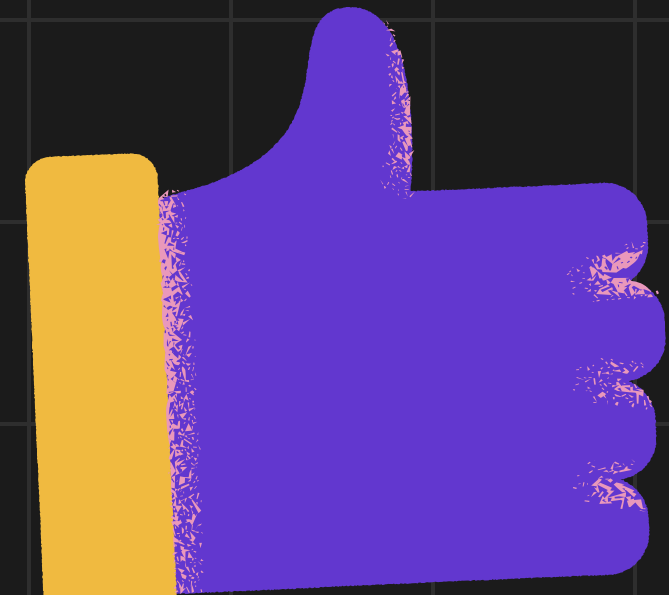
Presented by: SEH Jordan
Total Duration: 45 Hours

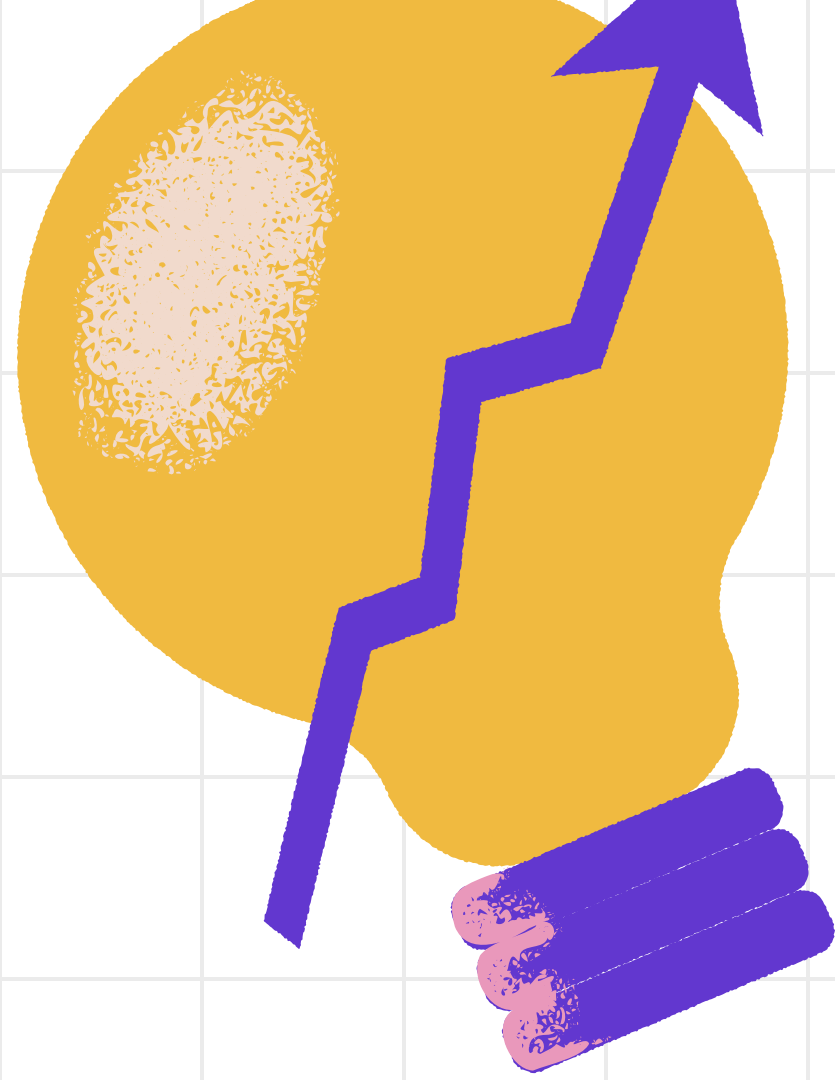
- 36 HOURS TRAINING
- 9 HOURS GRADUATION PROJECT



ABOUT SEH JORDAN

SEH Academy (Success Education Hub – Jordan) is a premier training and development institution based in Amman, Jordan. We specialize in building professional capacities in the humanitarian, development, education, and nonprofit sectors. Through certified programs and expert-led training, we empower individuals and organizations to improve impact, efficiency, and sustainability in their projects and services.



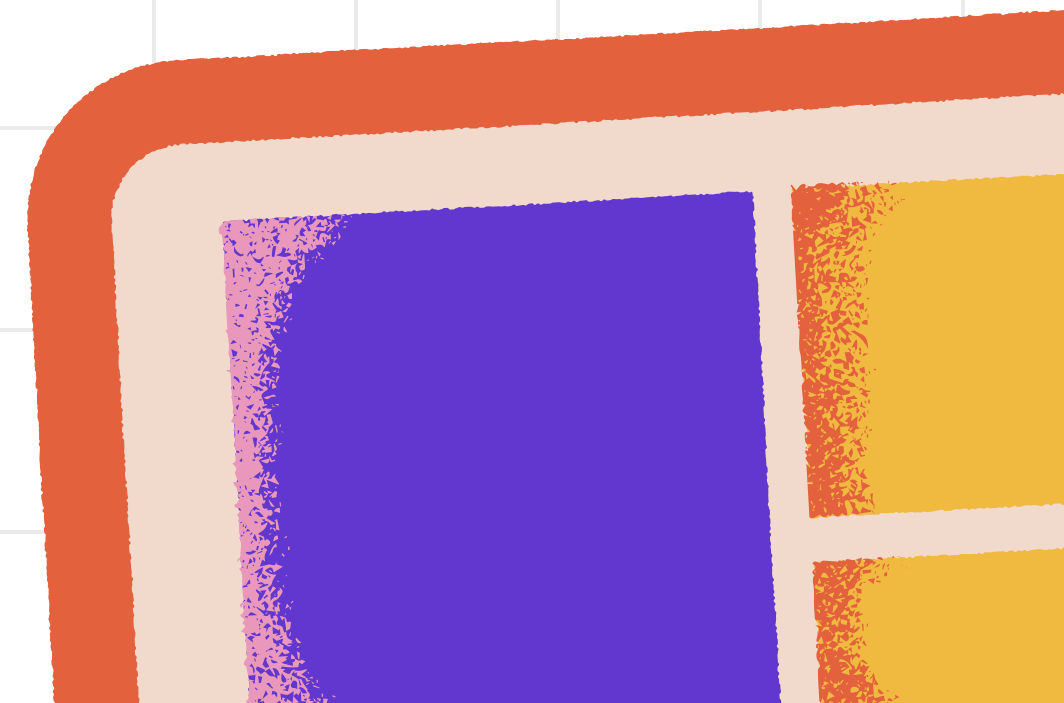


COURSE OVERVIEW

This integrated course combines two critical components for development professionals:

- MEAL DPro – Monitoring, Evaluation, Accountability, and Learning, based on the global standard by PM4NGOs
- Power BI – Data visualization and analysis for improved decision-making

Participants will learn how to design and manage MEAL systems and visualize data using Power BI to communicate results effectively and drive learning.



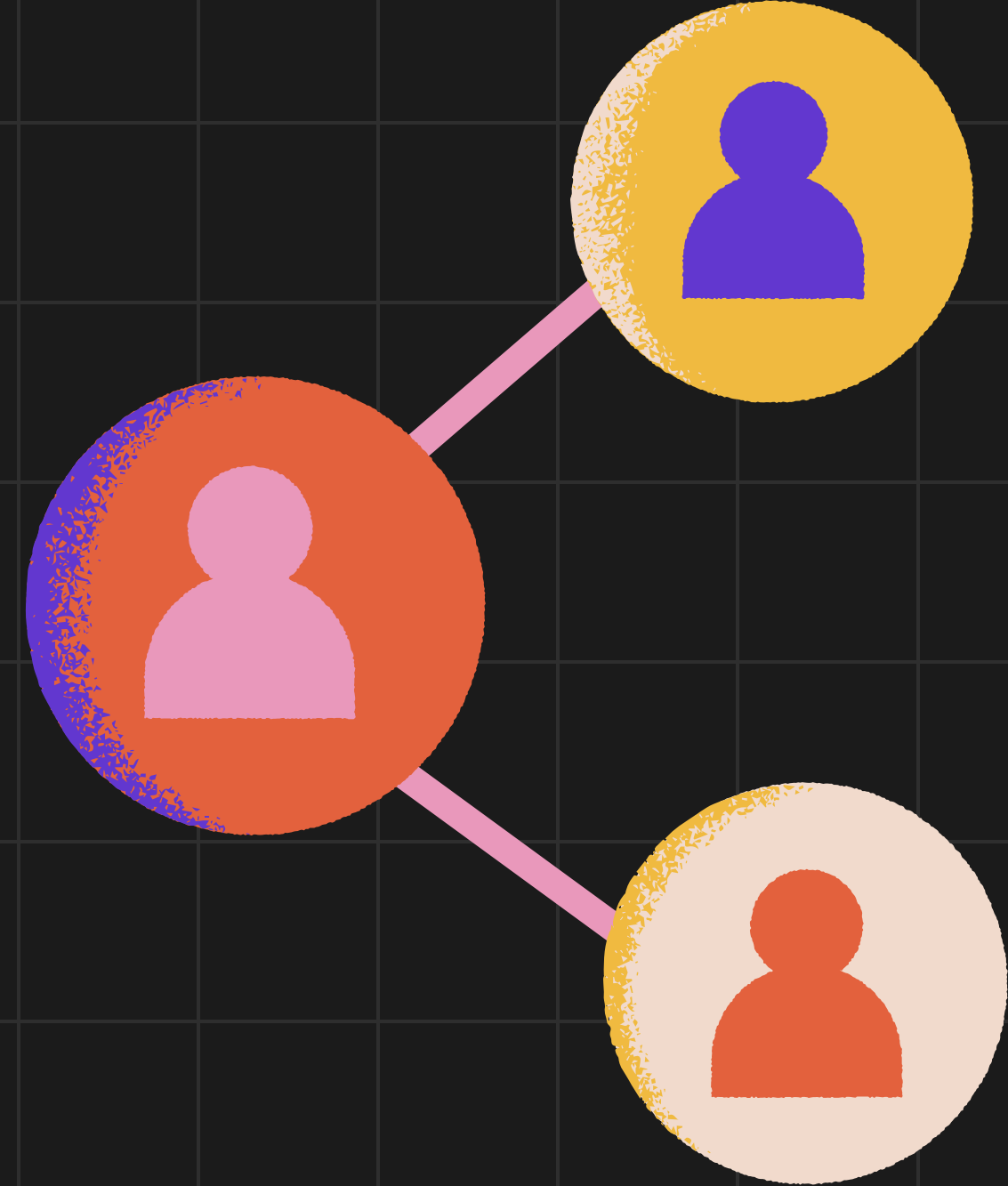
WHO SHOULD ATTEND

- MEAL Officers / Coordinators
- Project Managers and Program Staff
- NGO Field Workers and Analysts
- Data Management & Reporting Officers
- Development Professionals seeking certification

COURSE OBJECTIVES

BY THE END OF THIS COURSE,
PARTICIPANTS WILL BE ABLE TO:

- Understand and apply MEAL principles and frameworks
- Develop MEAL plans with indicators, tools, and learning mechanisms
- Use Power BI to clean, analyze, and visualize data
- Create live dashboards and professional reports for NGOs and donors
- Prepare for the MEAL DPro international exam





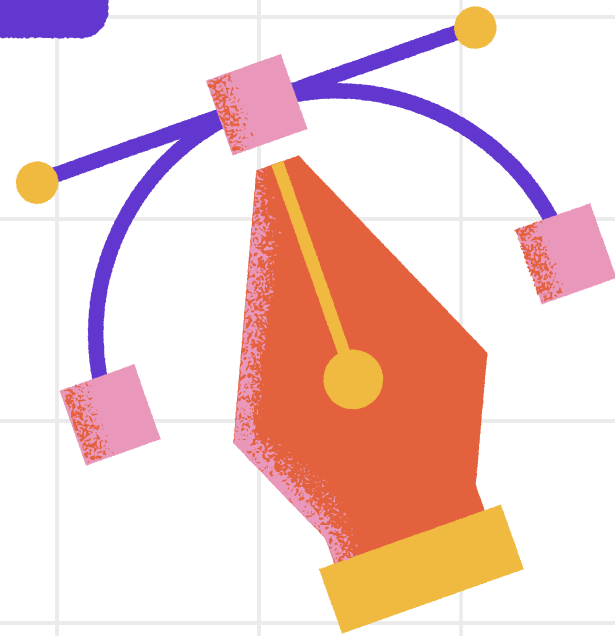
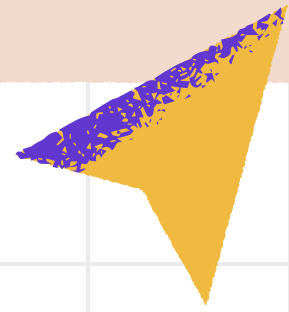
TRAINING MODULES (36 HOURS)

Module 1: Introduction to MEAL (6 Hours)

- Overview of MEAL and its role in development projects
- MEAL vs. M&E – Clarifying terms and processes
- The MEAL cycle and integration with PMD Pro

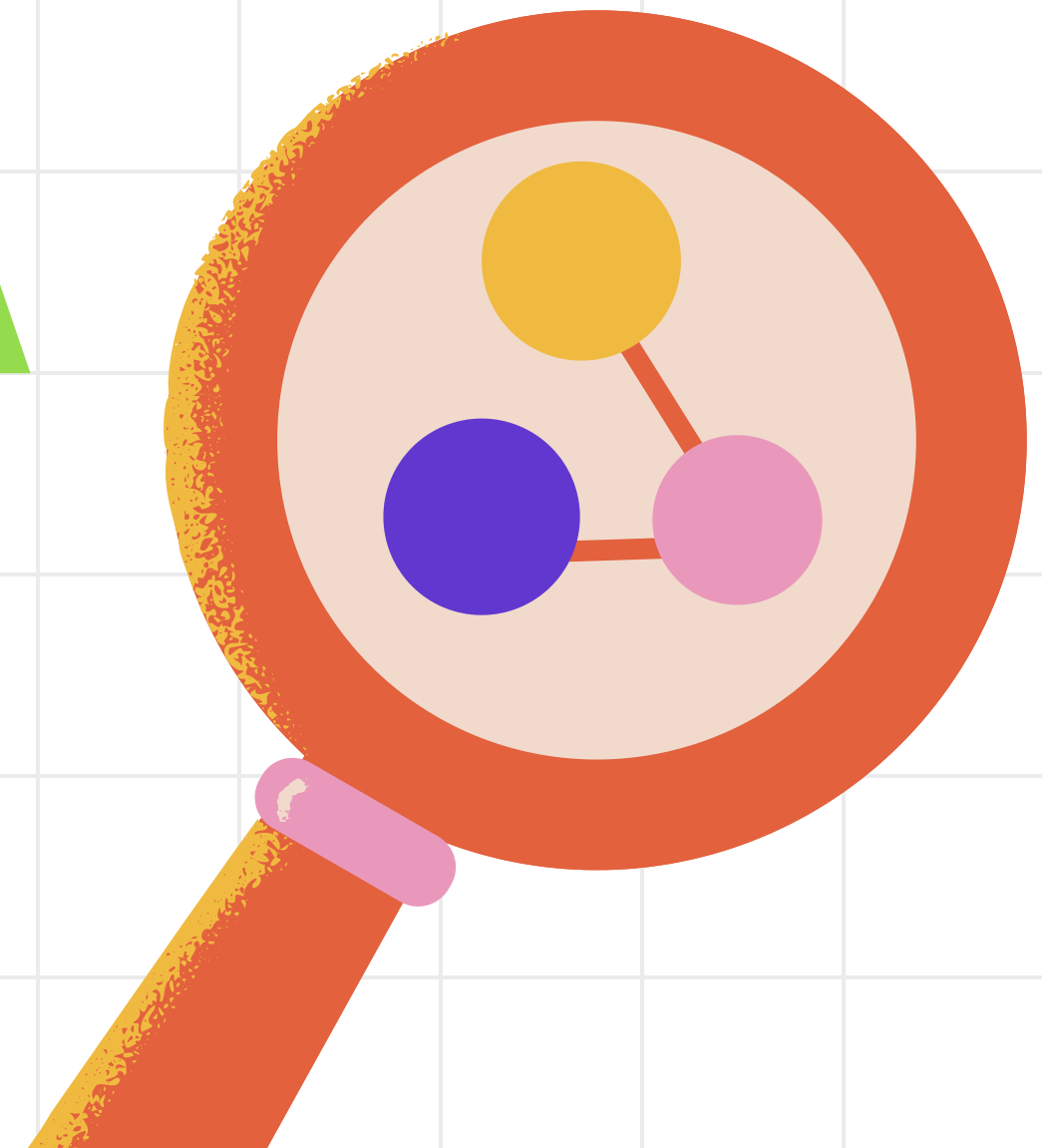
Module 2: MEAL Frameworks and Planning (6 Hours)

- Building a Theory of Change and Logical Framework (LogFrame)
- Selecting SMART indicators
- MEAL planning tools and templates



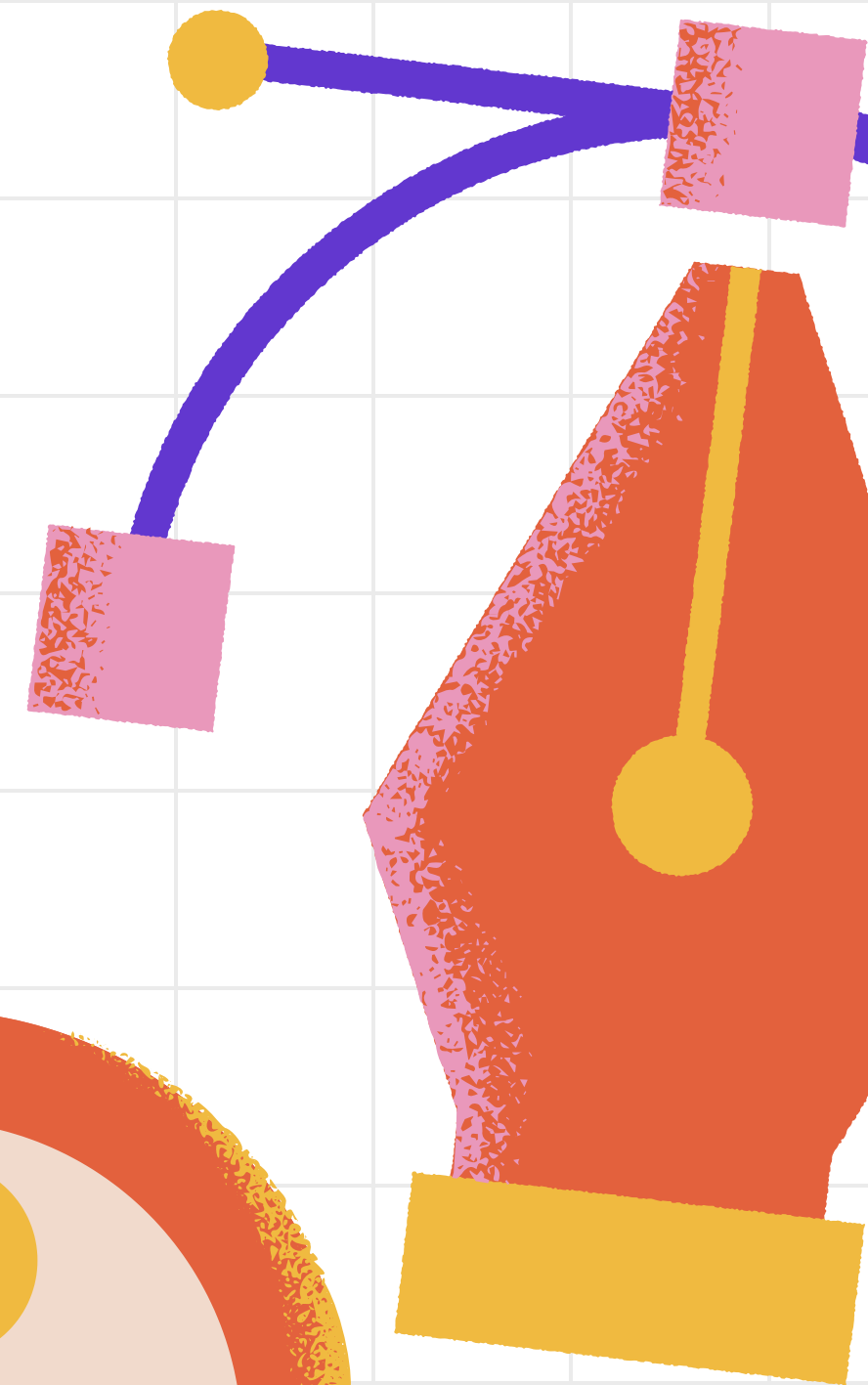
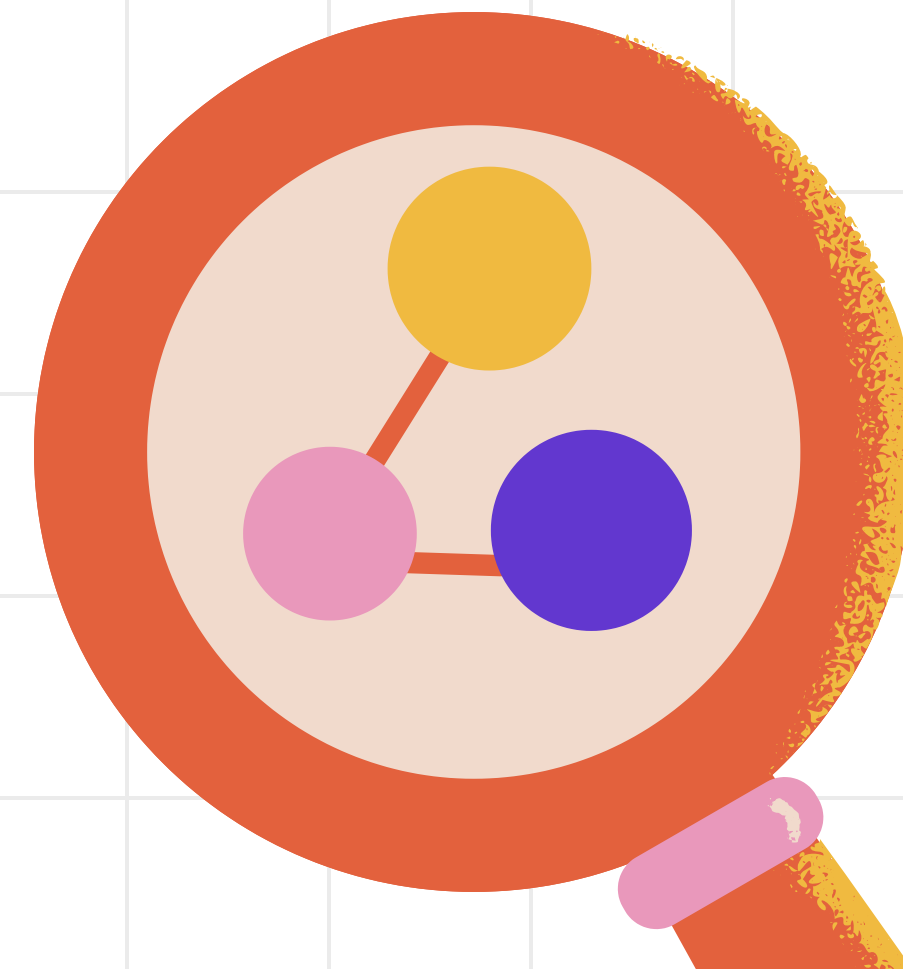
- Data collection methodologies (quantitative/qualitative)
- Designing monitoring tools (forms, checklists)
- Accountability: feedback and complaint systems

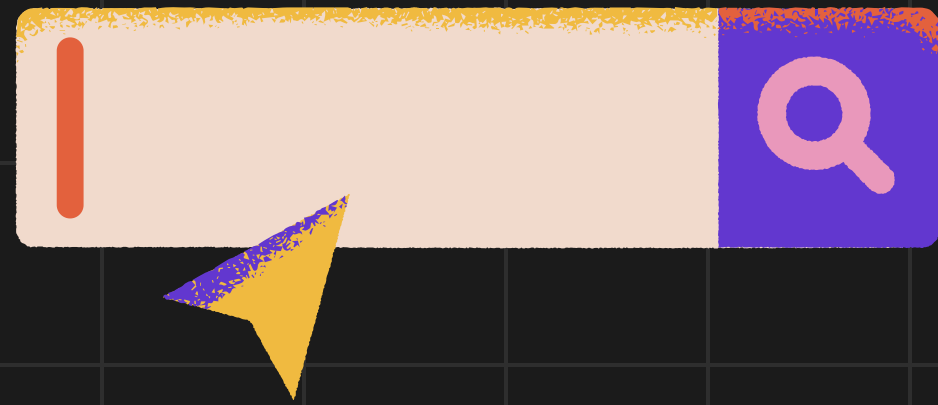
MODULE 3: MONITORING, DATA COLLECTION & ACCOUNTABILITY (6 HOURS)



MODULE 4: INTRODUCTION TO POWER BI (6 HOURS)

- Power BI Interface and Setup
- Connecting to Excel/CSV/Online Data Sources
- Data cleaning and transformation using Power Query

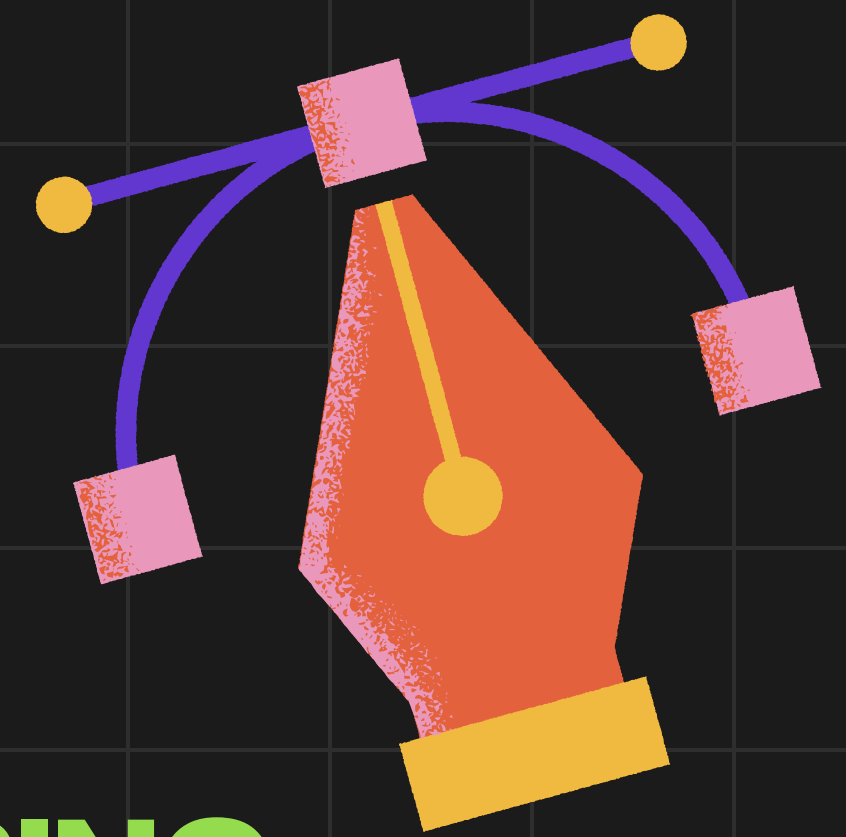
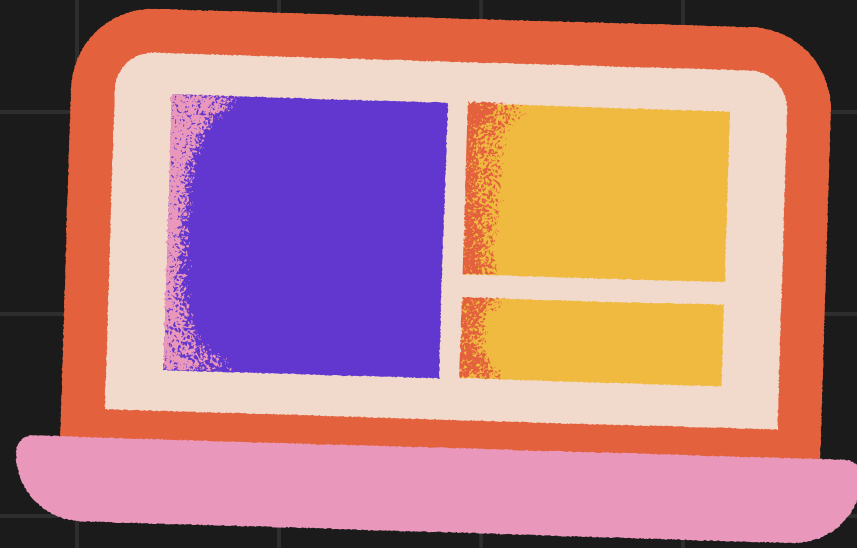
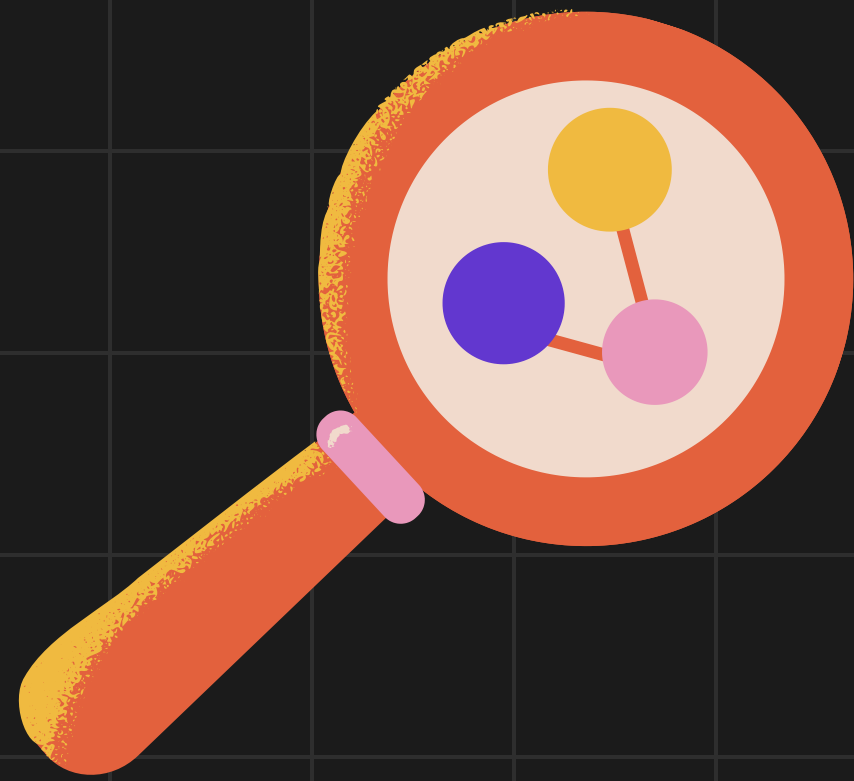




MODULE 5: VISUALIZATION AND DASHBOARD CREATION (6 HOURS)



- Data modeling and creating calculated fields with DAX
- Creating interactive reports and dashboards
- Customizing visuals for MEAL indicators



MODULE 6: REPORTING, SHARING, AND INTERPRETATION (6 HOURS)

- Publishing reports to the Power BI service
- Sharing data with internal and external stakeholders
- Making data-driven decisions using MEAL dashboards



GRADUATION PROJECT (9 HOURS)

Each participant will:

- Design a MEAL plan for a development or humanitarian project
- Use mock or real data for visualization
- Build a live Power BI dashboard
- Present their project and insights to the class




CERTIFICATION

✓ MEAL DPro Certificate:

Issued by PM4NGOs upon passing the international MEAL DPro exam.

✓ Power BI Certificate:

Issued by SEH Jordan upon completing training and the final project.





THANK YOU

