

Putting the puzzle together ...



to produce more profit for your bottom line!

Production Sale
Friday, April 24, 2015

5:00 pm CDT • Napoleon Livestock
Napoleon, ND

Selling:

27 Red Angus Yearling Bulls
**26 Simmental & SimAngus™
Yearling Bulls**



Kuhn's Red Angus & Crosshair Simmentals

Crosshair Simmental

Ben, Cassie, Brinley and Hailey Kleppe
3220 48th St SE • Dawson, ND 58428
Home: 701-327-8330 • Cell: 701-426-9210

**K
R**

Hello and welcome to our annual production sale. The bulls have been fed a complete mixed ration consisting of chopped hay, silage, corn, distillers and a complete mineral program. The average daily gain test started the day of weaning on October 10th and continued for 120 days. All the bulls are semen and soundness evaluated and are ready to go to work for you.

We are excited for you to see the bulls, they are bred to grow and fed to last in anyone's program. We would like to invite you to take the evening off and join us on April 24, 2015. If you are unable to attend the sale we encourage you to view the bulls at the ranch any time before the sale, or give us a call and we can help select a bull to fit your needs and program.

We hope to see you at the sale and see for yourself how a bull from CHSR can add pounds to your calf crop and improve your profitability. Thank you for your interest and support.

Ben, Cassie, Brinley and Hailey Kleppe



Kuhn's Red Angus

James, Stephanie, Elodie, Reagen and Hudson
6962 28th Ave SE • Napoleon, ND 58561
Home: 701-332-6378 • Cell: 701-426-6921

K

Welcome!

We at Kuhn's Red Angus are celebrating our 21st year in the Red Angus breed and what a great year to be in the cow-calf business! The Red Angus female is commanding top dollar for her overall functionality in her fertility, docility and mothering ability and these are some of the key points that we at Kuhn's Red Angus strive to do.

This is one of the finest sets of bulls we have to offer from birth to growth to carcass – they seem to cover all the bases. We here at Kuhn's Red Angus strive to bring you the best possible genetics by traveling throughout the nation looking for the best out there. We also try to achieve this through artificial insemination. Every female will go through the A.I. chute. By doing this we believe we can give you, the customer, a more complete bull!!

Feel free to call or better stop and look at the bulls and cows.

Here at Kuhn's Red Angus we strive to give, you the customer, the best. Thank you for your belief and support in our program
James, Stephanie Kuhn • Elodie, Reagen, Hudson and Brock



Kuhn's Red Angus & Crosshair Simmental

Friday, April 24, 2015 at 5 p.m. CDT

Napoleon Livestock, Napoleon ND • 1-800-932-8821 • 701-754-2216

SALE DAY PHONE:

Ben Kleppe701-426-9210
Cassie Kleppe701-471-2699
James Kuhn701-426-6921
Stephanie Kuhn701-269-9959

INDEPENDENT REPRESENTATIVE:

Ray Erbele701-226-7288 Cell, 701-754-2216 Work

SELLING:

27 Purebred Red Angus Yearling Bulls
26 Simmental Yearling Bulls

SALE ORDER:

The bulls will be sold by a sale order that we will put together that day.

CATTLE VIEWING:

Prior to April 23, Kuhn's Red Angus bulls can be viewed at the farmstead 7 miles south of Napoleon on Hwy 3 and 3 miles west then 1/2 mile north.

Crosshair Simmental can be viewed at the farmstead 15 miles north of Napoleon on Hwy 3 and 1 mile west.

We invite you to join us for snacks, coffee and pop prior to the sale. Come earlier to view the cattle that afternoon, on April 24, 2015. The sale begins at 5 p.m. Central Time.

AUCTIONEER:

Seth Weishaar605-210-1336

RINGMEN:

Kirby Goettsch, *Farm & Ranch Guide*605-380-3939 Cell
Scott Ressler, N.D. Stockmen's Assn.701-223-2522 Office
701-391-7310 Cell
Kris Petersen, *Cattle Business Weekly*701-339-0305 Cell

ONLINE CATALOG:

Catalog online at: www.cowcampcatalogs.com

VOLUME DISCOUNTS AVAILABLE

We will offer volume discounts if you purchase multiple bulls from either Kuhn's Red Angus or Crosshair Simmental – 3% discount on three bulls, a 4% discount on four bulls and a 5% discount on five or more bulls. Discount does not apply to a combination of bulls purchased from both.

LIABILITY

All persons attending the sale do so at their own risk. Kuhn's Red Angus and Crosshair Simmental assume no liability, legal or otherwise, of any accidents which may occur.

PROMOTION & CATALOG:

Cow Camp Promotions • Tracey Koester
Steele, ND • www.cowcamppromotions.com
Printing: LivestockDirect.net

BREEDING GUARANTEE

Kuhn Red Angus and Crosshair Simmental guarantee to provide you with a sound breeding bull capable of passing a semen test at 14 months of age.

If a problem arises, the seller must be notified before Sept. 1, 2015. After notification of issue seller has 90 days to make an adjustment of said problem. It is the buyer's responsibility to return the bull to the seller at the buyer's expense.

If the bull is declared unsatisfactory, buyer will be provided with a bull of equal value or credit given towards the purchase of another bull, seller's choice.

At no time will seller be responsible for more than the purchase price of animal.

Kuhn Red Angus and Crosshair Simmental will do everything possible to make any problem that arises, satisfactory to buyer.

Kuhn Red Angus and Crosshair Simmental strongly encourage taking insurance on your purchases.

TERMS AND CONDITIONS:

As soon as any animal is sold, it becomes the responsibility of the purchaser. We will discount \$50.00 per bull taken home by the customer on sale day. After May 1, a \$2.50 per-day feed cost will be charged.

All Sales are in the U.S dollar. Each animal is to be sold to the highest bidder. The auctioneer shall settle any disputes as to bids.

All cattle are to be paid for by the purchaser during or immediately after the sale and will not be removed until after settlement has been made unless prior arrangements have been made with Kuhn's Red Angus or Crosshair Simmental.

Napoleon Livestock would like the animals removed from their facility as soon as possible.

NAPOLEON AUCTION MARKET ALTERNATIVE BIDDING:

We will be offering the Kuhn's Red Angus and Crosshair Simmental Sale on the internet. To bid from your computer, you will need to follow these steps:

- 1) Log on to www.napoleonlivestock.com and click on the green oval that says: "Live Auction."
- 2) Click on "Viewer Registration" and register your information. Click the "Proceed" button at the bottom.

This should all be done at least one day prior to the sale to allow time for approval. If you purchase your animals, you will need to contact Napoleon Livestock at 1-800-932-8821 to make payment arrangements and to make arrangements to pick up or to have livestock delivered.

You must have DSL to be able to bid during the sale.

Bull Selection – Simplified.

Red Angus stakeholders have enjoyed the capability of selecting bulls based on economically relevant traits (ERTs), such as Heifer Pregnancy or Stayability, that truly impact their operations profitability. While these ERTs allow for efficient selection decisions, the growing number of ERTs and EPDs has resulted in confusion as producers attempt to estimate a sire's overall impact. In response, RAAA has developed the HerdBuilder and GridMaster indices, which answer the question:

“What impact will each potential sire have on my operation's profitability?”

While the process of calculating an index is very complex, the resulting selection tool is very simple to implement.

HerdBuilder and GridMaster are expressed as differences in profitability per exposure.

For more information, visit RedAngus.org.

Ranch Tested. Rancher Trusted.
Red Angus

HERDBUILDER

Producers selecting bulls to develop profitable replacement females and maximize the value of non-replacement marketed progeny should incorporate the HerdBuilder Index into their selection decisions.

The HerdBuilder Index is built using the following scenario:

- Red Angus bulls mated to cows and heifers
- Replacement heifers retained from within the herd
- All remaining progeny sold on a quality-based carcass grid

Given that replacement heifers are retained, significant influence is placed on the obvious maternal ERTs of Stayability, Heifer Pregnancy and Calving Ease. Additionally, with all remaining progeny sold on a quality-based carcass grid, Marbling, Yield Grade and growth EPDs also impact the HerdBuilder Index.

GRIDMASTER

Use the GridMaster Index if your operation's primary goal is maximizing profitability of feeders in the feedyard and on the rail.

The GridMaster Index is built using the following scenario:

- Red Angus bulls mated to cows
- All progeny sold on a quality-based carcass grid

Marbling, Yield Grade and growth EPDs are the traits of primary importance in the GridMaster Index.



BULL MORTALITY *and* LOSS OF USE INSURANCE COVERAGE



Coverage Option 1: Bull Mortality and Loss of Use Coverage

- Values:** Bulls valued up to \$25,000, not to exceed purchase price.
- Term:** One Year Policy Term
- Premium:** 12% of the Purchase Price Premium Fully Earned \$150 Minimum Premium Per Animal
- Testing:** All bulls must be tested, certified and listed in an official herd sale catalog.

Coverage Option 2: Bull Full Mortality Coverage

- Values:** Bulls valued up to \$25,000, not to exceed purchase price.
- Term:** Renewable One-Year Policy Term for Bulls 6 Month - 7 Years of age.
- Premium:** 5.5% of the Purchase Price Premium Fully Earned \$150 Minimum Premium Per Animal
- Testing:** Veterinarian examination and signed statement of health required for all bulls for which coverage is requested.

Protect Your INVESTMENT

Jolene Christofferson,
Independent Agent
LTD Insurance Agency, Inc.
PO Box 75, Napoleon, ND 58561

christof@bektel.com
Cell - (701) 426-7435
Office - (701) 754-4440

COVERAGES

- Full Mortality:**
100% of the value of the bull in the event of death or life-threatening injury.
- Loss of Use:**
80% of the value of the bull, less salvage value, of in the event of Loss of Use from an accident, illness, or disease that can clearly be diagnosed or identified to have occurred on a specified date.
- 25% of the value of the bull in the event of Loss of Use from an accident, illness, or disease if there is a diagnosis consistent with an accident, illness, or disease but no real evidence that provides clear diagnosis or identification.

COVERAGE

- Full Mortality:**
100% of the value of the bull in the event of death or life-threatening injury.

Coverage Underwritten By:
Aegis Security Insurance Company
PO Box 3153, Harrisburg, PA 17105-3153
AM BEST RATING: A VI



C-Bar Contour 107X

A **C-BAR CONTOUR 107X** #1405033
 BD: 1/17/10 1A 100% Dam's MPPA: 103.6
 BW: 79 WW: 680 WR: 1223 YW: YR: %IMF: 3.96 Rat: 16.4
K HXC CONQUEST 4405P | BECKTON JULIAN GG B571
 BROWN C- ABIGRACE S602 | HXC ELLIE MAY MA638
 BECKTON HERITAGE N013
 BROWN MS ABIGRACE P7905

HB	GM	CED	BW	WW	YW	MILK	ME	HPG	CEM	STAY	MARB	YG	CW	REA	FAT
153	53	12	-3.7	60	110	26	3	6	3	15	0.78	0.09	31	0.26	0.02
16%	15%	10%	20%	45%	21%	18%	60%	93%	65%	10%	12%	67%	28%	29%	70%



Andras Fusion R236

B **ANDRÁS FUSION R236** #1506931
 BD: 9/18/11 1A 100% Dam's MPPA: 100.0
 BW: 74 WW: 648 WR: 100 YW: YR:
K ANDRAS IN FOCUS B175 | MYTTY IN FOCUS
 DI ESTONIA 316
 ANDRAS BELLE B167 | ANDRAS THUNDER B105
 ANDRAS BELLE 416

HB	GM	CED	BW	WW	YW	MILK	ME	HPG	CEM	STAY	MARB	YG	CW	REA	FAT
146	53	14	-3.6	52	84	28	-1	10	9	11	0.76	0.08	15	0.03	0.01
19%	17%	6%	21%	66%	60%	13%	35%	57%	14%	45%	13%	64%	65%	60%	54%



Larson Jubilee 155

C **LARSON JUBILEE 155** #1437600
 BD: 3/4/11 1A 100% Dam's MPPA: 100.3
 BW: 81 WW: 686 WR: 101 YW: 1274 YR: 112 %IMF: 3.08 Rat: 79 REA: 12.8 FAT: 110
K VGW BASES LOADED 905 | RED SSS OLY 554T
 VGW WAR-SLICK 0786
 LARSON ABIGAIL MARIE 09 | LCHMN HEVN'S SAKE 1002F
 LARSON MARIE 567-866

HB	GM	CED	BW	WW	YW	MILK	ME	HPG	CEM	STAY	MARB	YG	CW	REA	FAT
94	53	8	-4.5	71	122	15	7	10	8	6	0.39	0.14	36	0.17	0.02
63%	15%	26%	14%	17%	8%	79%	80%	49%	17%	90%	60%	80%	16%	41%	70%



D **5L HOBO DESIGN 980-239Z** #1549821
 BD: 3/18/12 1A 100% Dam's MPPA: 103.1
 BW: 73 WW: 732 WR: 130 YW: 1338 YR: 124 %IMF: 4.35 Rat: 100 REA: 14.0 FAT: 115
K 5L HOBO DESIGN 273-7047 | 5L DESTINATION 893-6215
 5L ANALISE 1591-273
 5L BONITA 28-980 | 5L TRADESMAN 1715-6237
 5L BONITA 1446-28

HB	GM	CED	BW	WW	YW	MILK	ME	HPG	CEM	STAY	MARB	YG	CW	REA	FAT
156	50	6	0.7	74	118	21	1	17	11	13	0.38	0.11	42	0.27	0.01
10%	40%	29%	83%	7%	7%	43%	41%	1%	4%	24%	60%	80%	6%	22%	60%

Stephanie, the bull whisperer, on picture day



8001 Kuhn's Chey Bond

E **8001 KUHN'S CHEY BOND** #1253220
 BD: 1/26/08 1A 100% Dam's MPPA: 105.1
 BW: 76 WW: 727 WR: 103 YW: 1378 YR: 102 %IMF: 4.53 Rat: 11.4 REA: 102
K NSF BOND L007 BIEBER MAKE MIMI 7249
 MS NSF PROOF POSITIVE J
 VAR CHEYENNE ELSIE 6013 LCC CHEYENNE B221L
 ALBERG ELSIE 171

HB	GM	CED	BW	WW	YW	MILK	ME	HPG	CEM	STAY	MARB	YG	CW	REA	FAT
140	53	9	-5.8	62	96	21	5	9	7	12	0.50	-0.01	19	0.28	0.00
23%	14%	19%	8%	37%	40%	47%	68%	72%	23%	31%	42%	33%	58%	27%	40%



C-T Rio Grand 2044

F **C-T RIO GRAND 2044** #1512361
 BD: 1/31/12 1A 100% Dam's MPPA: 100.3
 BW: 80 WW: 749 WR: 103 YW: 1236 YR: 104 %IMF: 2.54 Rat: 83 REA: 14.5 Fat: 109
K C-T GRAND STATEMENT 1025 LJC MISSION STATEMENT P27
 C-T MISS PAN 0510 C-T MISS PAN 0760
 C-T FREIGHTLINER 303
 CTDB MISS PAN 239

HB	GM	CED	BW	WW	YW	MILK	ME	HPG	CEM	STAY	MARB	YG	CW	REA	FAT
92	52	3	-2.4	52	85	26	0	12	4	7	0.67	0.21	17	-0.27	0.02
70%	13%	54%	31%	70%	60%	12%	33%	20%	57%	89%	13%	97%	61%	97%	76%



Red SVR Warrior 99X

G **RED SVR WARRIOR 99X** #1425736
 BD: 2/21/10 1A 100%
 BW: 95 WW: 671 WR: 100 YW: 1175 YR: 100
K RED SVR KNIGHT 236T RED SVR KNIGHT 73P
 RED SOUTH VIEW MISS MAXI 45H
 RED DWAJO DUCHESS 75M RED CRESCENT CREEK CHEROKEE
 RED WBR DUCHESS 16'96

HB	GM	CED	BW	WW	YW	MILK	ME	HPG	CEM	STAY	MARB	YG	CW	REA	FAT
89	45	1	1.4	56	72	17	-16	5	3	10	-0.09	-0.18	15	0.52	-0.03
67%	99%	71%	87%	57%	79%	70%	2%	94%	65%	59%	99%	3%	68%	9%	6%



Hudson and Brock



Elodie's kindergarten graduation
 Crosshair Simmental & Kuhn's Red Angus Production Sale



Lot 1



Lot 2



Lot 3



Udder on a Contour daughter

1 **KUHNS COUNTOUR B011** #1691713

BD: 2/2/14 1A 100% Dam's MPPA: 101.6 Dam's Age: 2

BW:	WW:	WR:	YW:	YR:	ADG:	%IMF:	Rat:	REA:	Rat:
75	728	104	1267	100	3.36	2.93	77	14.0	106

K C-BAR CONTOUR 107X
 KUHNS DUCHESS Z104

HXC CONQUEST 4405P
 BROWN C- ABIGRACE S602
 RED SVR WARRIOR 99X
 JKRA PRESID QUEEN

HB	GM	CED	BW	WW	YW	MILK	ME	HPG	CEM	STAY	MARB	YG	CW	REA	FAT
127	50	6	-3.0	50	74	27	-1	5	4	13	0.42	0.02	16	0.22	0.01
32%	41%	29%	21%	74%	78%	7%	32%	97%	56%	23%	52%	43%	65%	27%	58%

2 **KUHNS COUNTOUR B017** #1691714

BD: 2/5/14 1A 100% Dam's MPPA: 98.0 Dam's Age: 2

BW:	WW:	WR:	YW:	YR:	ADG:	%IMF:	Rat:	REA:	Rat:
80	667	95	1222	97	3.46	3.89	102	12.5	95

K C-BAR CONTOUR 107X
 KUHNS BOND GIRL Z102

HXC CONQUEST 4405P
 BROWN C- ABIGRACE S602
 8001 KUHN'S CHEY BOND
 KUHNS GALEAN P 0932

HB	GM	CED	BW	WW	YW	MILK	ME	HPG	CEM	STAY	MARB	YG	CW	REA	FAT
118	50	5	-2.8	52	83	26	4	6	5	13	0.45	0.01	20	0.20	-0.01
42%	46%	37%	23%	69%	63%	8%	73%	95%	40%	26%	46%	38%	51%	30%	21%

3 **KUHNS COUNTOUR B019** #1691716

BD: 2/5/14 1A 100% Dam's MPPA: 103.6 Dam's Age: 2

BW:	WW:	WR:	YW:	YR:	ADG:	%IMF:	Rat:	REA:	Rat:
82	758	109	1452	115	4.33	4.35	114	13.5	102

K C-BAR CONTOUR 107X
 KUHNS BOND GIRL Z063

HXC CONQUEST 4405P
 BROWN C- ABIGRACE S602
 8001 KUHN'S CHEY BOND
 KUHNS REAGEN RENE 0925

HB	GM	CED	BW	WW	YW	MILK	ME	HPG	CEM	STAY	MARB	YG	CW	REA	FAT
120	52	7	-3.5	65	113	26	5	5	5	12	0.55	0.08	30	0.30	0.02
39%	13%	22%	15%	22%	8%	8%	80%	97%	40%	35%	27%	70%	21%	17%	76%

4 **KUHNS COUNTOUR B024** #1691718

BD: 2/6/14 1A 100% Dam's MPPA: 98.4 Dam's Age: 2

BW:	WW:	WR:	YW:	YR:	ADG:	%IMF:	Rat:	REA:	Rat:
71	673	96	1336	106	4.14	3.80	100	13.2	100

K C-BAR CONTOUR 107X
 KUHNS MEDORA Z038

HXC CONQUEST 4405P
 BROWN C- ABIGRACE S602
 BADLANDS NET WORTH 23U
 KUHN'S BIRMINGHAM FOREST

HB	GM	CED	BW	WW	YW	MILK	ME	HPG	CEM	STAY	MARB	YG	CW	REA	FAT
142	52	4	-2.2	58	99	22	0	5	4	15	0.66	0.13	26	0.26	0.04
19%	16%	47%	32%	46%	27%	37%	40%	97%	56%	9%	13%	87%	33%	21%	93%



Lot 5



Lot 6



Lot 7



Lot 8

5 **KUHNS COUNTOUR B026** #1691719

BD: 2/8/14 1A 100% Dam's MPPA: 106.0 Dam's Age: 2

BW:	WW:	WR:	YW:	YR:	ADG:	%IMF:	Rat:	REA:	Rat:
99	802	115	1400	111	3.73	4.33	114	14.1	107

K C-BAR CONTOUR 107X
 HXG CONQUEST 4405P
 BROWN C- ABIGRACE S602

KUHNS MEDORA Z058
 BADLANDS NET WORTH 23U
 KUHNS LAD QUEEN 6035

HB	GM	CED	BW	WW	YW	MILK	ME	HPG	CEM	STAY	MARB	YG	CW	REA	FAT
125	51	-2	1.9	74	117	21	1	6	4	15	0.57	0.11	45	0.32	0.01
34%	37%	95%	95%	5%	6%	39%	44%	95%	56%	11%	24%	81%	2%	15%	58%

6 **KUHNS JUBILEE B029** #1691650

BD: 2/16/14 1A 100% Dam's MPPA: 99.4 Dam's Age: 3

BW:	WW:	WR:	YW:	YR:	ADG:	%IMF:	Rat:	REA:	Rat:
64	651	91	1185	96	3.33	2.18	74	12.4	96

K LARSON JUBILEE 155
 VGW BASES LOADED 905
 LARSON ABIGAIL MARIE 09

KUHNS COVER GIRL Y014
 LSF HIGH YIELD 8088U
 KUHNS DIRECT QUEEN 0915

HB	GM	CED	BW	WW	YW	MILK	ME	HPG	CEM	STAY	MARB	YG	CW	REA	FAT
141	53	13	-6.5	47	74	20	8	13	9	11	0.47	0.05	5	-0.12	-0.01
19%	12%	2%	2%	82%	79%	56%	94%	10%	5%	50%	41%	57%	89%	91%	21%

7 **KUHNS FUSION B031** #1691722

BD: 2/17/14 1A 100% Dam's MPPA: 97.7 Dam's Age: 3

BW:	WW:	WR:	YW:	YR:	ADG:	%IMF:	Rat:	REA:	Rat:
62	674	95	1229	100	3.46	2.69	91	12.0	93

K ANDRAS FUSION R236
 ANDRAS IN FOCUS B175
 ANDRAS BELLE B167

KUHNS BOND GIRL Y027
 8001 KUHNS CHEY BOND
 KUHNS DIRECT HORIZON 0911

HB	GM	CED	BW	WW	YW	MILK	ME	HPG	CEM	STAY	MARB	YG	CW	REA	FAT
154	52	15	-5.6	50	81	25	2	11	10	12	0.62	-0.01	9	0.12	-0.01
11%	12%	1%	3%	75%	67%	12%	52%	34%	3%	42%	17%	30%	83%	45%	21%

8 **KUHNS JUBILEE B032** #1691721

BD: 2/18/14 1A 100% Dam's MPPA: 97.4 Dam's Age: 3

BW:	WW:	WR:	YW:	YR:	ADG:	%IMF:	Rat:	REA:	Rat:
86	731	103	1292	105	3.50	3.00	101	12.6	97

K LARSON JUBILEE 155
 VGW BASES LOADED 905
 LARSON ABIGAIL MARIE 09

KUHNS DIRECT KING Y023
 FEDDES DIRECT KING 7144
 KUHNS BAILEY QUEEN 7035

HB	GM	CED	BW	WW	YW	MILK	ME	HPG	CEM	STAY	MARB	YG	CW	REA	FAT
97	49	5	-0.4	62	106	22	1	13	6	8	0.34	0.10	33	0.18	0.01
69%	62%	37%	66%	31%	16%	37%	46%	9%	26%	84%	71%	78%	16%	34%	58%

9 **KUHNS HOBO B038** #1691725
 BD: 2/20/14 1A 100% Dam's MPPA: 99.6 Dam's Age: 2
 BW: 72 WW: 692 WR: 99 YW: 1183 YR: 93 ADG: 3.06 %IMF: 3.71 Rat: 98 REA: 10.6 Rat: 81

K 5L HOBO DESIGN 980-239Z | 5L HOBO DESIGN 273-7047
 5L BONITA 28-980
 KUHNS BOND GIRL Z075 | 8001 KUHN'S CHEY BOND
 KUHNS BAILEY QUEEN 7022

HB	GM	CED	BW	WW	YW	MILK	ME	HPG	CEM	STAY	MARB	YG	CW	REA	FAT
159	52	6	-1.7	63	84	18	1	12	8	14	0.40	0.11	26	0.08	0.01
9%	20%	29%	40%	30%	61%	71%	48%	22%	9%	14%	57%	81%	32%	53%	58%



Lacey Kreft

Lot 11



Lacey Kreft

Lot 12



Lacey Kreft

Lot 13

10 **KUHNS JUBILEE B040** #1691726
 BD: 2/20/14 1A 100% Dam's MPPA: 101.0 Dam's Age: 11
 BW: 79 WW: 707 WR: 99 YW: 1288 YR: 104 ADG: 3.62 %IMF: 4.68 Rat: 158 REA: 13.1 Rat: 101

K LARSON JUBILEE 155 | VGW BASES LOADED 905
 LARSON ABIGAIL MARIE 09
 KUHN'S BLAZING QUEEN | FORSTER KING ROB 9028
 MS KUHN'S BLAZE

HB	GM	CED	BW	WW	YW	MILK	ME	HPG	CEM	STAY	MARB	YG	CW	REA	FAT
107	52	7	-3.2	54	92	22	5	11	7	9	0.54	0.16	20	0.12	0.05
56%	19%	22%	18%	63%	43%	30%	81%	40%	15%	78%	28%	93%	52%	45%	97%

11 **KUHNS FUSION B057** #1691728
 BD: 2/24/14 1A 100% Dam's MPPA: 105.1 Dam's Age: 5
 BW: 83 WW: 708 WR: 99 YW: 1262 YR: 102 ADG: 3.46 %IMF: 2.16 Rat: 73 REA: 13.6 Rat: 105

K ANDRAS FUSION R236 | ANDRAS IN FOCUS B175
 ANDRAS BELLE B167
 KUHN'S DIRECT HORIZON 0911 | 5L DIRECT DESIGN 893-6315
 KUHN'S BLAZING HORIZON

HB	GM	CED	BW	WW	YW	MILK	ME	HPG	CEM	STAY	MARB	YG	CW	REA	FAT
127	50	10	-1.7	53	84	26	1	12	9	10	0.58	-0.03	18	0.14	-0.03
32%	48%	8%	40%	65%	60%	11%	47%	18%	5%	60%	22%	23%	60%	41%	5%

12 **KUHNS JUBILEE B058** #1691729
 BD: 2/24/14 1A 100% Dam's MPPA: 101.1 Dam's Age: 3
 BW: 79 WW: 748 WR: 105 YW: 1355 YR: 110 ADG: 3.79 %IMF: 2.47 Rat: 83 REA: 14.2 Rat: 110

K LARSON JUBILEE 155 | VGW BASES LOADED 905
 LARSON ABIGAIL MARIE 09
 SMJ SIERRA BC RUMBLER Y306 | CBR RUMBLER 116-7140
 SMJ SIERRA NEL COMMIT W305

HB	GM	CED	BW	WW	YW	MILK	ME	HPG	CEM	STAY	MARB	YG	CW	REA	FAT
124	52	7	-2.5	71	117	19	2	12	3	11	0.47	0.11	34	0.17	0.01
35%	13%	22%	27%	9%	5%	62%	57%	20%	70%	53%	41%	81%	13%	35%	58%

13 **KUHNS JUBILEE B060** #1691733
 BD: 2/24/14 1A 100% Dam's MPPA: 100.0 Dam's Age: 3
 BW: 79 WW: 694 WR: 97 YW: 1229 YR: 100 ADG: 3.34 %IMF: 2.23 Rat: 75 REA: 13.2 Rat: 102

K LARSON JUBILEE 155 | VGW BASES LOADED 905
 LARSON ABIGAIL MARIE 09
 KUHN'S BAILEY BOND Y112 | 8001 KUHN'S CHEY BOND
 KUHNS BAILEY LOGAN 7032

HB	GM	CED	BW	WW	YW	MILK	ME	HPG	CEM	STAY	MARB	YG	CW	REA	FAT
126	52	8	-3.8	64	102	16	4	12	7	10	0.39	0.05	27	0.18	0.00
33%	19%	16%	13%	26%	21%	81%	68%	25%	15%	60%	60%	57%	31%	34%	42%



Lot 14

14 KUHNS BOND B092 #1691742
 BD: 3/3/14 1A 100% Dam's MPPA: 97.3 Dam's Age: 6
 BW: 84 WW: 691 WR: 97 YW: 1022 YR: 83 ADG: 2.07 %IMF: 3.56 Rat: 120 REA: 12.3 Rat: 95
 8001 KUHN'S CHEY BOND | NSF BOND L007
 | VAR CHEYENNE ELSIE 6013
 JACOBSON REBA 8203 | SHOCO DATA
 | GLACIER REBA 759

HB	GM	CED	BW	WW	YW	MILK	ME	HPG	CEM	STAY	MARB	YG	CW	REA	FAT
156	54	8	-4.5	51	55	19	1	11	8	13	0.66	0.06	5	0.05	0.02
10%	4%	16%	8%	73%	95%	59%	50%	38%	9%	28%	13%	62%	89%	60%	76%



Calf shelter

15 KUHNS WARRIOR B100 #1691746
 BD: 3/8/14 1A 100% Dam's MPPA: 106.0 Dam's Age: 5
 BW: 97 WW: 846 WR: 119 YW: 1360 YR: 110 ADG: 3.21 %IMF: 4.19 Rat: 141 REA: 14.4 Rat: 111
 RED SVR WARRIOR 99X | RED SVR KNIGHT 236T
 | RED DWAJO DUCHESS 75M
 KUHN'S QUEEN P 0938-5008 | FORSTER PROSPECTOR 5252
 | KUHN'S RAM QUEEN

HB	GM	CED	BW	WW	YW	MILK	ME	HPG	CEM	STAY	MARB	YG	CW	REA	FAT
93	48	-1	1.6	60	80	24	-6	9	4	10	0.20	0.03	21	0.31	0.02
73%	87%	91%	93%	41%	68%	22%	10%	74%	56%	70%	92%	48%	48%	16%	76%



Lot 16

16 KUHNS WARRIOR B106 #1691747
 BD: 3/12/14 1A 100% Dam's MPPA: 99.3 Dam's Age: 4
 BW: 64 WW: 643 WR: 90 YW: 1088 YR: 88 ADG: 2.78 %IMF: 2.75 Rat: 93 REA: 13.2 Rat: 102
 RED SVR WARRIOR 99X | RED SVR KNIGHT 236T
 | RED DWAJO DUCHESS 75M
 KUHN'S BOND GIRL X060 | 8001 KUHN'S CHEY BOND
 | KUHN'S CHY QUEEN 7008

HB	GM	CED	BW	WW	YW	MILK	ME	HPG	CEM	STAY	MARB	YG	CW	REA	FAT
156	51	11	-5.9	42	50	22	-5	8	7	14	0.38	-0.09	-3	0.18	-0.01
10%	31%	5%	3%	91%	97%	31%	14%	81%	15%	20%	62%	9%	97%	34%	21%



Lot 17

17 KUHNS BOND B113 #1691750
 BD: 3/14/14 1A 100% Dam's MPPA: 100.2 Dam's Age: 6
 BW: 80 WW: 734 WR: 103 YW: 1214 YR: 98 ADG: 3.00 %IMF: 2.93 Rat: 99 REA: 14.8 Rat: 114
 8001 KUHN'S CHEY BOND | NSF BOND L007
 | VAR CHEYENNE ELSIE 6013
 8062 KUHN'S PROSP. PRESID | FORSTER PROSPECTOR 5252
 | KUHN'S FLAME PRESID

HB	GM	CED	BW	WW	YW	MILK	ME	HPG	CEM	STAY	MARB	YG	CW	REA	FAT
104	49	7	-4.1	44	62	24	4	10	7	10	0.32	-0.12	2	0.17	-0.03
60%	67%	22%	10%	88%	92%	18%	72%	57%	15%	64%	75%	5%	92%	35%	5%



Lot 18

18 KUHNS HOBO B114 #1691751
 BD: 3/14/14 1A 100% Dam's MPPA: 108.4 Dam's Age: 2
 BW: 96 WW: 845 WR: 121 YW: 1278 YR: 101 ADG: 2.70 %IMF: 2.60 Rat: 68 REA: 13.7 Fat: 104
 5L HOBO DESIGN 980-239Z | 5L HOBONITA 28-980
 KUHNS BOND GIRL Z098 | 8001 KUHN'S CHEY BOND
 | 5L RED SKY 2094-648

HB	GM	CED	BW	WW	YW	MILK	ME	HPG	CEM	STAY	MARB	YG	CW	REA	FAT
150	50	1	1.6	75	99	21	0	11	6	15	0.20	0.07	43	0.34	0.00
13%	55%	78%	93%	4%	27%	47%	41%	38%	26%	7%	92%	66%	3%	13%	42%



Lot 19

19 KUHNS BOND B121 #1691754
 BD: 3/18/14 1A 100% Dam's MPPA: 96.3 Dam's Age: 6
 BW: 75 WW: 678 WR: 95 YW: 1123 YR: 91 ADG: 2.78 %IMF: 2.47 Rat: 83 REA: 13.6 Fat: 105
 8001 KUHN'S CHEY BOND | NSF BOND L007
 8022 KUHN'S RATT LAD | VAR CHEYENNE ELSIE 6013
 | DLC LOGAN LAD 4125
 | KUHN'S QUEEN RATT 6029

HB	GM	CED	BW	WW	YW	MILK	ME	HPG	CEM	STAY	MARB	YG	CW	REA	FAT
119	51	9	-5.0	52	70	19	3	10	8	9	0.45	-0.08	8	0.17	-0.03
41%	24%	12%	5%	70%	84%	63%	62%	47%	9%	74%	46%	10%	85%	35%	5%



Lot 20

20 KUHNS WARRIOR B123 #1691755
 BD: 3/18/14 1A 100% Dam's MPPA: 96.4 Dam's Age: 5
 BW: 79 WW: 629 WR: 88 YW: 1135 YR: 92 ADG: 3.16 %IMF: 2.23 Rat: 75 REA: 13.4 Fat: 103
 RED SVR WARRIOR 99X | RED SVR KNIGHT 236T
 | RED DWAJO DUCHESS 75M
 KUHNS EPIC LAD 0944 | MLK CRK EPIC 7176
 | KUHN'S LAD RATT 7015

HB	GM	CED	BW	WW	YW	MILK	ME	HPG	CEM	STAY	MARB	YG	CW	REA	FAT
115	49	4	-2.0	52	73	21	-8	9	5	11	0.30	-0.06	12	0.37	0.01
46%	71%	47%	35%	70%	81%	46%	5%	74%	40%	57%	79%	14%	75%	11%	58%



Lot 21

21 KUHNS RIO B130 #1691759
 BD: 3/19/14 1A 100% Dam's MPPA: 98.7 Dam's Age: 5
 BW: 87 WW: 686 WR: 96 YW: 1278 YR: 104 ADG: 3.70 %IMF: 3.54 Rat: 119 REA: 12.1 Fat: 94
 C-T RIO GRAND 2044 | C-T GRAND STATEMENT 1025
 | C-T MISS PAN 0510
 KUHNS EPIC TREND 0917 | MLK CRK EPIC 7176
 | KUHN'S LAD TREND 7001

HB	GM	CED	BW	WW	YW	MILK	ME	HPG	CEM	STAY	MARB	YG	CW	REA	FAT
117	51	4	-3.7	45	79	27	0	13	5	11	0.50	0.07	8	-0.14	-0.01
44%	39%	47%	14%	86%	69%	6%	35%	13%	40%	51%	35%	66%	84%	93%	21%



Putting the puzzle together ...



Lacey Kreft

Lot 22

22 KUHNS RIO B136 #1691770
 BD: 3/21/14 1A 100% Dam's MPPA: 94.6 Dam's Age: 3
 BW: 81 WW: 656 WR: 92 YW: 1371 YR: 110 ADG: 4.46 %IMF: 3.01 Rat: 102 REA: 11.8 Fat: 91
 C-T RIO GRAND 2044 C-T MISS PAN 0510
 KUHNS BOND GIRL Y054 8001 KUHNS'S CHEY BOND
 KUHNS QUEEN P 0940-2014

HB	GM	CED	BW	WW	YW	MILK	ME	HPG	CEM	STAY	MARB	YG	CW	REA	FAT
108	51	5	-3.1	46	90	23	2	12	6	10	0.69	0.07	9	-0.18	-0.01
55%	37%	37%	20%	85%	46%	25%	51%	22%	26%	63%	11%	66%	83%	96%	21%



Lacey Kreft

Lot 23

23 KUHNS WARRIOR B141 #1691762
 BD: 3/23/14 1A 100% Dam's MPPA: 105.3 Dam's Age: 5
 BW: 85 WW: 730 WR: 102 YW: 1290 YR: 104 ADG: 3.50 %IMF: 2.61 Rat: 88 REA: 11.9 Fat: 92
 RED SVR WARRIOR 99X RED SVR KNIGHT 236T
 KUHNS REAGEN RENE 0925 RED DWAJO DUCHESS 75M
 BIEBER ROB ROY 10444
 KUHNS'S RAM FLAME

HB	GM	CED	BW	WW	YW	MILK	ME	HPG	CEM	STAY	MARB	YG	CW	REA	FAT
68	48	4	-0.2	60	81	24	-3	6	4	7	0.00	0.00	20	0.27	0.01
93%	89%	47%	69%	41%	66%	17%	20%	95%	56%	95%	99%	34%	54%	20%	58%



1022
Coso

Spring 2015

24 KUHNS HOBO B143 #1691764
 BD: 3/31/14 2 100% Dam's MPPA: 109.2 Dam's Age: 2
 BW: 81 WW: 856 WR: 123 YW: 1375 YR: 113 ADG: 3.24 %IMF: 4.83 Rat: 127 REA: 13.7 Fat: 104
 5L HOBO DESIGN 980-239Z 5L HOBO DESIGN 273-7047
 KUHNS IMPRESSION Z055 CONNEALY IMPRESSION
 KUHNS'S GALENA MARIAC

HB	GM	CED	BW	WW	YW	MILK	ME	HPG	CEM	STAY	MARB	YG	CW	REA	FAT
127	51	3	1.0	74	118	26	-1	12	7	12	0.66	0.03	37	0.53	0.02
32%	30%	57%	87%	5%	5%	8%	29%	17%	15%	45%	13%	48%	8%	4%	76%

- Black-hided
- Category 2, 100%



Lacey Kreft

Lot 25

25 KUHNS WARRIOR B144 #1691765
 BD: 4/3/14 1A 100% Dam's MPPA: 98.9 Dam's Age: 4
 BW: 86 WW: 726 WR: 102 YW: 1212 YR: 97 ADG: 3.04 %IMF: 2.68 Rat: 90 REA: 13.0 Fat: 101
 RED SVR WARRIOR 99X RED SVR KNIGHT 236T
 KUHNS I.P. QUEEN X079 RED DWAJO DUCHESS 75M
 KUHNS'S IMPERIAL 6007
 KUHNS'S PRESIDIO QUEEN

HB	GM	CED	BW	WW	YW	MILK	ME	HPG	CEM	STAY	MARB	YG	CW	REA	FAT
111	47	1	0.3	55	73	18	-7	9	5	11	0.14	-0.04	17	0.24	-0.02
52%	91%	78%	78%	59%	80%	71%	8%	74%	40%	47%	95%	19%	61%	24%	10%



Lot 26



Lot 27

26 KUHNS RIO B146 #1691768
 BD: 4/3/14 1A 100% Dam's MPPA: 98.8 Dam's Age: 3
 BW: 82 WW: 693 WR: 97 YW: 1148 YR: 92 ADG: 2.84 %IMF: 3.58 Rat: 11.7 REA: 91
 C-T RIO GRAND 2044 C-T MISS PAN 0510
 KUHNS SHAWNEE Y048 SIX MILE WIN-CHESTER 745W
 KUHNS CHY QUEEN 7008

HB	GM	CED	BW	WW	YW	MILK	ME	HPG	CEM	STAY	MARB	YG	CW	REA	FAT
132	52	4	-2.7	52	77	22	-1	11	5	12	0.55	0.18	17	-0.30	0.01
27%	15%	47%	24%	70%	74%	35%	30%	28%	40%	40%	27%	95%	62%	99%	58%

27 KUHNS WARRIOR B148 #1691767
 BD: 4/5/14 1A 100% Dam's MPPA: 102.9 Dam's Age: 9
 BW: 100 WW: 831 WR: 117 YW: 1320 YR: 106 ADG: 3.05 %IMF: 2.73 Rat: 12.2 REA: 94
 RED SVR WARRIOR 99X RED SVR KNIGHT 236T
 KUHNS LOGAN QUEEN RED DWAJO DUCHESS 75M
 FORSTER KING ROB 9028
 MS KUHN'S LOGAN

HB	GM	CED	BW	WW	YW	MILK	ME	HPG	CEM	STAY	MARB	YG	CW	REA	FAT
107	48	-1	0.7	63	86	22	-6	9	6	11	0.20	0.02	26	0.26	0.00
56%	78%	91%	84%	30%	57%	35%	11%	76%	26%	52%	92%	43%	33%	21%	42%

Buy a Bull – We'll Buy Your Tags!

If you purchase a bull from us, we will purchase one bag of FCCP or Allied Access tags per bull for you.

All you need to do is call the Red Angus Marketing Department, answer a few management questions, and enroll your calf crop for free. Then start reaping the premiums through Red Angus' marketing programs!

Feeder Calf Certification Program (FCCP) "yellow tags" are for bull customers using ONLY Red Angus bulls. FCCP cattle are accepted into the Choice+ Grid and Pro-Cow Program. Cattle enrolled in FCCP are USDA genetic, source and age verified.

Allied Access "green tags" verify source and age for bull customers utilizing halfblood bulls in their planned crossbreeding program.

RedAngus.org • (940) 387-3502

Red Angus Feeder Calf Certification Program

For nearly two decades the FCCP has been delivering results for bull customers using ONLY Red Angus

Genetic, Source & Age

Released in 2012, Allied Access provides an added-value option for Red Angus customers using multiple breeds in a rotation, hybrids and/or composite bulls to capture heterosis in their crossbreeding programs.

Source & Age

RedAngus.org • (940) 387-3502



Ellingson Ideal 13X

H **ELLINGSON IDEAL X13** #2563890
 BD: 1/28/10 PUREBRED POLLED RED
 BW: 100 WW: 919 WR: 114 YW: 1751 YR: 114 IMF: 1.81 RAT: 82 REA: 18.7 TI: 116
K THSF FREEDOM 300N | BH TRACKER 998J
R ELLINGSON POWERLINE S681 | SAFN MISS ZING 02H
 ELLINGSON POWERLINE P430
 ELLINGSON LONG CUT N343

CE	BW	WW	YW	MCE	MILK	MW	STAY	CW	YG	MARB	BF	REA	API	TI
3.1	2.3	84.9	134.2	17.7	7.4	49.8	21.2	53.0	-0.43	-0.19	-0.089	1.18	107.8	70.0
95%	60%	1%	1%	1%	99%	75%	45%	1%	10%	99%	10%	2%	80%	35%



KS Sundance Kid S28

I **KS SUNDANCE KID S28** #2353900
 BD: 2/16/06 PUREBRED POLLED RED
 BW: 89 WW: 742 WR: YW: YR: IMF: 3.47 RAT: 100 REA: 14.0 TI: 100
K CNS DREAM ON L186 | NICHOLS LEGACY G151
R KS SHANIA H871 | CNS SHEEZA DREAM K107W
 MV RED LIGHT 406
 BOZ MISS F578

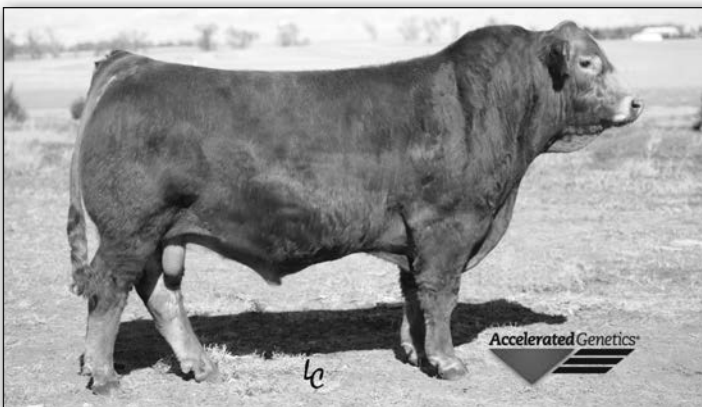
CE	BW	WW	YW	MCE	MILK	MW	STAY	CW	YG	MARB	BF	REA	API	TI
14.5	-0.5	58.0	86.9	12.2	28.4	57.4	21.1	20.9	-0.23	0.30	-0.019	0.71	141.0	72.0
5%	10%	75%	65%	20%	10%	30%	50%	75%	85%	15%	99%	70%	15%	25%

J **SRF FORCE 213Z** #2658130
 BD: 2/18/12 PUREBRED POLLED RED
 BW: 90 WW: 670 WR: 98 YW: 1202 YR: 99
K HOOKS SHEAR FORCE 38K | NICHOLS LEGACY G151
R SRF MISS 044X | C&D TRACY
 BF M218 SNAKE EYES
 SRF MISS BODYBUILDER 30N

CE	BW	WW	YW	MCE	MILK	MW	STAY	CW	YG	MARB	BF	REA	API	TI
17.7	-2.5	61.3	85.3	13.4	26.9	57.5	23.9	16.2	-0.44	0.25	-0.043	1.15	152.9	76.9
1%	1%	60%	70%	10%	20%	30%	20%	85%	5%	25%	75%	3%	3%	10%

K **HSF HIGH ROLLER 12T** #2408113
 BD: 1/19/07 PUREBRED POLLED RED
 BW: 87 WW: 650 WR: 109 YW: 1216 YR: 106 IMF: 4.81 RAT: 141 REA: 15.9 TI: 108
K TJ 57J THE GAMBLER | HARTS BLACK CASINO B408
R HSF RED FORTUNES SIS 33 | TJ NELLIE 56C
 SRS FORTUNE 500
 BOZ MISS C397

CE	BW	WW	YW	MCE	MILK	MW	STAY	CW	YG	MARB	BF	REA	API	TI
18.9	-2.1	65.3	92.2	16.3	37.4	70.0	26.5	21.2	-0.36	0.11	-0.039	0.94	152.6	75.3
1%	2%	45%	50%	1%	1%	1%	5%	75%	25%	60%	90%	20%	3%	15%



Ellingson Klondike Y123

L **ELLINGSON KLONDIKE Y123** #2616685
 BD: 2/1/11 PUREBRED POLLED RED
 BW: 96 WW: 926 WR: 116 YW: 1678 YR: 112 IMF: 2.56 RAT: 102 REA: 20.7 TI: 122
K WS BEEF MAKER R13 | HOOKS SHEAR FORCE 38K
R ELLINGSON MS TEDDY U894 | DCR MS RIBEYE N72
 WHEATLAND RED TEDDY 457P
 ELLINGSON POWERLINE P439

CE	BW	WW	YW	MCE	MILK	MW	STAY	CW	YG	MARB	BF	REA	API	TI
6.0	4.6	82.1	133.5	9.5	27.7	68.7	20.4	56.3	-0.46	0.25	-0.082	1.38	129.8	79.6
80%	95%	2%	1%	50%	15%	1%	55%	1%	3%	25%	10%	1%	30%	4%



Lot 28

28 CROSSHAIR 1B #2894862
 BD: 3/10/14 PUREBRED POLLED RED Dam's Age: 3
 BW: 97 WW: 722 WR: 99 YW: 1390 YR: 108 ADG: 4.2 %IMF: 2.54 Rat: 112 REA: 13.2 Rat: 90
K KS SUNDANCE KID S28 CNS DREAM ON L186
R CHSR MS HAILEY 44Z KS SHANIA H871
 ELLINGSON IDEAL X13
 DAVES R DREAM 866

CE	BW	WW	YW	MCE	MILK	MW	STAY	CW	YG	MARB	BF	REA	API	TI
8.9	3.1	85.1	138.1	13.7	23.8	66.4	22.5	56.7	-0.15	0.16	-0.048	0.66	134.6	79.5
50%	75%	1%	1%	10%	40%	2%	30%	1%	99%	45%	75%	80%	20%	4%

- Long bodied
- Out of a good first-calf heifer
- Ranks in top 1% WW and YW with High ADG



Lot 29

29 CROSSHAIR 5B #2894810
 BD: 3/13/14 PUREBRED POLLED RED Dam's Age: 2
 BW: 85 WW: 680 WR: 93 YW: 1210 YR: 94 ADG: 3.3 %IMF: 2.46 Rat: 109 REA: 14.1 Rat: 96
K HSF HIGH ROLLER 12T TJ 57J THE GAMBLER
R CHSR MS IDEAL 47Z HSF RED FORTUNES SIS 33
 ELLINGSON IDEAL X13
 DAVES R DREAM 818

CE	BW	WW	YW	MCE	MILK	MW	STAY	CW	YG	MARB	BF	REA	API	TI
13.1	-0.2	69.9	103.4	16.6	28.4	63.4	24.6	30.8	-0.28	0.15	-0.032	0.87	142.5	75.2
15%	15%	25%	25%	1%	10%	10%	15%	40%	65%	50%	90%	35%	10%	15%

- Big middled and smooth made
- Little more calving ease and maternal in this guy



Lot 30

30 CROSSHAIR 18B #2894820
 BD: 3/18/14 PUREBRED POLLED RED Dam's Age: 2
 BW: 103 WW: 693 WR: 95 YW: 1223 YR: 95 ADG: 3.3 %IMF: 2.88 Rat: 127 REA: 12.6 Rat: 86
K KS SUNDANCE KID S28 CNS DREAM ON L186
R CHSR MS IDEAL 94Z KS SHANIA H871
 ELLINGSON IDEAL X13
 DAVES G S 538 888

CE	BW	WW	YW	MCE	MILK	MW	STAY	CW	YG	MARB	BF	REA	API	TI
7.1	3.1	67.9	100.8	15.5	21.2	55.1	21.3	34.4	-0.22	0.19	-0.052	0.59	123.0	68.9
70%	75%	30%	30%	2%	60%	40%	45%	25%	90%	40%	55%	90%	45%	45%

- Dark red and deep bodied
- Sundance Kid and Ideal makes a nice cross
- Add depth of body in a set a calves with this guy



Lot 31

31 CROSSHAIR 34B #2894852
 BD: 3/24/14 PUREBRED POLLED RED Dam's Age: 7
 BW: 99 WW: 724 WR: 100 YW: 1209 YR: 94 ADG: 3 %IMF: 1.72 Rat: 76 REA: 13.8 Rat: 94
K LRX BUCKEYE 72Y DESTINY BUCKEYE
R DAVES GUNNER 807 LRX MS CEASAR 62T
 TNT GUNNER N208
 DAVES R QUARM R568

CE	BW	WW	YW	MCE	MILK	MW	STAY	CW	YG	MARB	BF	REA	API	TI
6.6	3.0	64.4	78.2	12.9	21.7	53.9	16.9	19.9	-0.32	-0.16	-0.085	0.46	90.0	57.3
75%	75%	45%	85%	15%	55%	50%	90%	75%	45%	99%	10%	99%	99%	95%

- Cherry red outcross son of Buckeye
- As soggy and deep as you can make them
- Out of a really good Gunner cow



Lot 32

32 CROSSHAIR 41B #2894945
 BD: 3/28/14 PUREBRED POLLED RED Dam's Age: 9
 BW: 97 WW: 756 WR: 104 YW: 1373 YR: 107 ADG: 3.8 %IMF: 2.57 Rat: 114 REA: 13.9 Rat: 95
K ELLINGSON KLONDIKE Y123 | WS BEEF MAKER R13
R DAVES G SLAM 600 | ELLINGSON MS TEDDY U894
 | WHF GRAND SLAM H21
 | MISS ARNOLD J1955

CE	BW	WW	YW	MCE	MILK	MW	STAY	CW	YG	MARB	BF	REA	API	TI
4.7	3.6	77.7	120.7	11.8	28.0	66.8	20.0	46.9	-0.24	0.20	-0.052	0.81	121.9	75.1
90%	85%	10%	3%	20%	15%	2%	60%	3%	80%	35%	55%	45%	50%	15%

- Disposition that is second to none
- Long bodied and made really nice
- A Klondike sure to add pounds and with this guy's mother you will want to keep daughters



Lot 33

33 CROSSHAIR 46B #2894938
 BD: 3/29/14 PUREBRED POLLED RED Dam's Age: 6
 BW: 98 WW: 733 WR: 101 YW: 1362 YR: 106 ADG: 3.9 %IMF: 1.66 Rat: 73 REA: 15.4 Rat: 105
K ELLINGSON IDEAL X13 | THSF FREEDOM 300N
R CHSR CROC766 907 | ELLINGSON POWERLINE S681
 | DAVES CROC 766
 | DAVES G SLAM R535

CE	BW	WW	YW	MCE	MILK	MW	STAY	CW	YG	MARB	BF	REA	API	TI
2.7	3.2	78.3	122.2	15.8	16.5	55.6	21.8	47.3	-0.31	-0.15	-0.063	0.94	104.9	65.9
99%	75%	5%	3%	2%	90%	40%	40%	3%	50%	99%	35%	20%	85%	60%

- Power Ideal son
- Mother has been a great producer with nice udder
- Top 5% WW and 3% YW and CW



Lot 34

34 CROSSHAIR 57B #2894946
 BD: 3/31/14 PUREBRED POLLED RED Dam's Age: 5
 BW: 97 WW: 648 WR: 89 YW: 1204 YR: 94 ADG: 3.5 %IMF: 2.06 Rat: 91 REA: 13.8 Rat: 94
K ELLINGSON IDEAL X13 | THSF FREEDOM 300N
R CHSR MISS WINCHESTER X18 | ELLINGSON POWERLINE S681
 | WINCHESTER HR P8315
 | DAVES B MAKER 803

CE	BW	WW	YW	MCE	MILK	MW	STAY	CW	YG	MARB	BF	REA	API	TI
8.8	2.4	67.4	100.8	13.9	16.0	49.7	24.3	33.3	-0.48	-0.04	-0.100	0.99	121.5	64.9
50%	60%	35%	30%	10%	95%	75%	15%	30%	2%	90%	1%	15%	50%	65%

- Long-made son of Ideal
- Dam has been a great producer having a full brother to this guy in last year's sale



Lot 35

35 CROSSHAIR 61B #2894935
 BD: 4/1/14 PUREBRED POLLED RED Dam's Age: 4
 BW: 94 WW: 658 WR: 90 YW: 1168 YR: 91 ADG: 3.2 %IMF: 1.21 Rat: 54 REA: 12.8 Rat: 87
K LRX BUCKEYE 72Y | DESTINY BUCKEYE
R BCLR MISS DOM Y133 | LRX MS CEASAR 62T
 | STF/HR DOMINATOR W1202
 | BCLR MISS TEGAN T712

CE	BW	WW	YW	MCE	MILK	MW	STAY	CW	YG	MARB	BF	REA	API	TI
7.8	1.7	58.9	77.7	11.1	15.7	45.1	16.6	18.3	-0.26	-0.23	-0.075	0.34	88.6	53.7
60%	45%	70%	85%	30%	95%	95%	90%	80%	75%	99%	15%	99%	99%	99%

- Dark cherry red
- Thick made
- Different pedigree if you are looking for an outcross bull



Lot 36

36 CROSSHAIR 65B #2894889
 BD: 4/1/14 PUREBRED POLLED RED Dam's Age: 5
 BW: 98 WW: 807 WR: 111 YW: 1462 YR: 114 ADG: 4.1 %IMF: 2.65 Rat: 117 REA: 16.2 TI: 110
K ELLINGSON KLONDIKE Y123 | WS BEEF MAKER R13
R CHSR CROC 9107 | ELLINGSON MS TEDDY U894
 | LBR CROCKETT R81
 | MISS DEVORE N300

CE	BW	WW	YW	MCE	MILK	MW	STAY	CW	YG	MARB	BF	REA	API	TI
4.4	4.7	90.7	144.2	9.3	26.9	72.2	20.4	62.5	-0.33	0.26	-0.065	1.18	130.4	83.7
90%	95%	1%	1%	55%	20%	1%	55%	1%	40%	25%	35%	2%	30%	1%

- Powerful best describes this guy
- Top 1% for WW, YW, MW, and TI
- Crockett dam is nice uddered and extremely deep bodied



Lot 37

37 CROSSHAIR 67B #2894910
 BD: 4/2/14 PUREBRED POLLED RED Dam's Age: 7
 BW: 98 WW: 814 WR: 112 YW: 1260 YR: 98 ADG: 2.8 %IMF: 2.07 Rat: 92 REA: 14.5 TI: 99
K ELLINGSON IDEAL X13 | THSF FREEDOM 300N
R DAVES R DREAM 881 | ELLINGSON POWERLINE S681
 | DILLONS K217 RED DREAM
 | DAVES G SLAM 643

CE	BW	WW	YW	MCE	MILK	MW	STAY	CW	YG	MARB	BF	REA	API	TI
6.8	2.1	75.6	109.5	16.6	19.5	57.3	24.9	37.7	-0.39	-0.04	-0.090	0.85	122.3	69.3
75%	55%	10%	15%	1%	75%	30%	15%	15%	15%	90%	2%	40%	50%	40%

- Really nice-made Ideal out of good-uddered dam
- Deep quartered and wide topped
- Got a little slow start this fall but is really coming on – don't overlook him



Lot 38

38 CROSSHAIR 68B #2894861
 BD: 4/2/14 PUREBRED POLLED RED Dam's Age: 2
 BW: 80 WW: 655 WR: 90 YW: 1166 YR: 91 ADG: 3.2 %IMF: 2.28 Rat: 101 REA: 13.7 TI: 93
K SRF FORCE 213Z | HOOKS SHEAR FORCE 38K
R CHSR MS IDEAL 104Z | SRF MISS 044X
 | ELLINGSON IDEAL X13
 | DAVES F BUILDER 682

CE	BW	WW	YW	MCE	MILK	MW	STAY	CW	YG	MARB	BF	REA	API	TI
11.6	-0.4	65.1	97.7	14.8	23.4	55.9	21.6	27.3	-0.35	0.07	-0.045	0.95	129.3	70.2
20%	15%	45%	35%	4%	40%	35%	40%	50%	30%	70%	75%	20%	30%	35%

- Great disposition
- Nice phenotype
- The Force calves with bring some more calving ease in a nice-made package



Lot 39

39 CROSSHAIR 69B #2894793
 BD: 4/2/14 PUREBRED POLLED RED Dam's Age: 5
 BW: 97 WW: 702 WR: 97 YW: 1239 YR: 97 ADG: 3.4 %IMF: 2.42 Rat: 107 REA: 15.0 TI: 102
K ELLINGSON IDEAL X13 | THSF FREEDOM 300N
R CHSR TNTSF 991 | ELLINGSON POWERLINE S681
 | TNT SHEAR FORCE T278
 | DAVES R S 729

CE	BW	WW	YW	MCE	MILK	MW	STAY	CW	YG	MARB	BF	REA	API	TI
8.7	2.2	71.0	105.6	16.3	14.6	50.1	23.7	35.8	-0.39	0.00	-0.061	1.05	123.5	67.7
50%	60%	20%	20%	1%	95%	75%	20%	20%	15%	85%	35%	10%	45%	50%

- Wide and deep
- Dark cherry red
- Dam has been a consistent producer always bring in a top calf



Lot 40

40 CROSSHAIR 73B #2894835

BD: 4/4/14 3/4 SIMMENTAL POLLED RED Dam's Age: 2
 BW: 82 WW: 660 WR: 91 YW: 1245 YR: 97 ADG: 3.7 %IMF: 1.68 Rat: 74 REA: 16.2 TI: 110

K SRF FORCE 213Z HOOKS SHEAR FORCE 38K
 SRF MISS 044X
R CHSR MS BIRMINGHAM 105Z KUHNS BIRMINGHAM 0923
 DAVES G SLAM R532

CE	BW	WW	YW	MCE	MILK	MW	STAY	CW	YG	MARB	BF	REA	API	TI
12.3	-0.1	53.1	85.9	10.3	28.1	54.6		21.4	-0.28	0.08	-0.023	0.83	120.1	60.5
35%	40%	80%	70%	25%	15%	40%	%	65%	20%	90%	65%	15%	55%	85%

- Moderate birth weight
- Deep and thick
- His young damm has a great udder



Lot 41

41 CROSSHAIR 80B #2894828

BD: 4/5/14 PUREBRED POLLED RED Dam's Age: 6
 BW: 108 WW: 710 WR: 98 YW: 1221 YR: 95 ADG: 3.2 %IMF: 2.80 Rat: 124 REA: 14.8 TI: 101

K CDI TRUMP CARD 210Y NF TRUMP S582
 CDI MS SHEAR FORCE 71T
R CHSR CROC766 921 DAVES CROC 766
 MISS DEVORE M210

CE	BW	WW	YW	MCE	MILK	MW	STAY	CW	YG	MARB	BF	REA	API	TI
4.7	6.1	63.9	95.0	8.1	26.5	58.5	19.4	35.4	-0.34	0.14	-0.059	0.90	107.4	62.4
90%	99%	50%	45%	70%	20%	25%	70%	25%	35%	50%	55%	30%	80%	80%

- Deep, heavy-quartered bull
- Dark red and sure to add pounds in a moderate package
- Dam is perfectly uddered.



Lot 42

42 CROSSHAIR 82B #2894923

BD: 4/5/14 PUREBRED POLLED RED Dam's Age: 7
 BW: 89 WW: 662 WR: 91 YW: 1252 YR: 98 ADG: 3.7 %IMF: 2.00 Rat: 88 REA: 13.8 TI: 94

K ELLINGSON IDEAL X13 THSF FREEDOM 300N
 ELLINGSON POWERLINE S681
R DAVES R DREAM 819 DILLONS K217 RED DREAM
 DAVES R S 619

CE	BW	WW	YW	MCE	MILK	MW	STAY	CW	YG	MARB	BF	REA	API	TI
8.5	1.2	69.1	105.7	16.4	16.0	50.6	24.0	34.5	-0.26	-0.06	-0.049	0.73	121.4	65.8
55%	35%	30%	20%	1%	95%	70%	20%	25%	75%	95%	75%	65%	50%	60%

- Dark red
- Long bodied
- Free-moving Ideal son that add pounds and length into a set of feeder cattle



Lot 43

43 CROSSHAIR 92B #2894877

BD: 4/6/14 3/4 SIMMENTAL POLLED RED Dam's Age: 4
 BW: 105 WW: 755 WR: 104 YW: 1353 YR: 106 ADG: 3.8 %IMF: 3.91 Rat: 173 REA: 16.8 TI: 115

K ELLINGSON KLONDIKE Y123 WS BEEF MAKER R13
 ELLINGSON MS TEDDY U894
R CHSR MS NORSE KING Y22 TNTS NORSEMAN KING U273
 DAVES BOLD 603

CE	BW	WW	YW	MCE	MILK	MW	STAY	CW	YG	MARB	BF	REA	API	TI
8.2	3.7	75.6	122.7	9.4	24.5	62.3		48.6	-0.44	0.52	-0.088	1.16	130.8	80.3
75%	95%	10%	5%	35%	35%	10%	%	3%	1%	25%	3%	1%	40%	15%

- Homo polled
- Powerful, long-bodied Klondike son
- Disposition is great with IMF ration of 173 and Ribeye in Top 1%
- Nice herd sire prospect



Lot 44

44 CROSSHAIR 103B #2894934
 BD: 4/8/14 PUREBRED POLLED RED Dam's Age: 7
 BW: 102 WW: 713 WR: 98 YW: 1316 YR: 103 ADG: 3.8 %IMF: 2.01 Rat: 89 REA: 15.5 TI: 106
K ELLINGSON IDEAL X13 THSF FREEDOM 300N
R DAVES R DREAM 850 ELLINGSON POWERLINE S681
 DILLONS K217 RED DREAM
 DAVES R S 645

CE	BW	WW	YW	MCE	MILK	MW	STAY	CW	YG	MARB	BF	REA	API	TI
7.4	3.3	75.9	117.0	15.8	15.4	53.3	23.3	44.4	-0.39	-0.02	-0.088	0.94	120.6	68.8
65%	80%	10%	5%	2%	95%	55%	25%	5%	15%	85%	10%	20%	50%	45%

- Homo Polled
- Wide topped and long bodied
- Great disposition out of real nice dam



Lot 45

45 CROSSHAIR 104B #2894825
 BD: 4/8/14 PUREBRED POLLED RED Dam's Age: 5
 BW: 102 WW: 756 WR: 104 YW: 1358 YR: 106 ADG: 3.8 %IMF: 2.51 Rat: 111 REA: 15.2 TI: 103
K ELLINGSON IDEAL X13 THSF FREEDOM 300N
R CHSR BEEF MAKER X27 ELLINGSON POWERLINE S681
 WS BEEF MAKER R13
 MISS DEVORE P402

CE	BW	WW	YW	MCE	MILK	MW	STAY	CW	YG	MARB	BF	REA	API	TI
5.7	3.5	82.3	126.5	15.3	21.2	62.4	23.0	50.1	-0.29	0.13	-0.046	1.05	127.5	75.9
85%	80%	2%	1%	3%	60%	10%	25%	2%	60%	55%	75%	10%	35%	15%

- Thick-made, powerful Ideal son
- This bull is backed by a great cow family for us
- He is sure to add pounds to any calf crop



Lot 46

46 CROSSHAIR 112B #2894943
 BD: 4/9/14 PUREBRED POLLED RED Dam's Age: 4
 BW: 70 WW: 664 WR: 91 YW: 1187 YR: 93 ADG: 3.3 %IMF: 1.85 Rat: 82 REA: 14.4 TI: 98
K ELLINGSON IDEAL X13 THSF FREEDOM 300N
R CHSR GUN 848 X82 ELLINGSON POWERLINE S681
 DAVES GUNNER 848
 DAVES GS 503 7105

CE	BW	WW	YW	MCE	MILK	MW	STAY	CW	YG	MARB	BF	REA	API	TI
7.3	0.9	62.0	93.1	16.3	20.7	51.7	21.5	26.7	-0.40	-0.13	-0.082	0.81	108.7	60.8
65%	30%	60%	50%	1%	65%	65%	45%	55%	15%	90%	10%	45%	80%	85%

- Super dark red
- Moderate birth weight
- Wide across top and long bodied



Lot 47

47 CROSSHAIR 116B #2894947
 BD: 4/10/14 PUREBRED POLLED RED Dam's Age: 11
 BW: 95 WW: 698 WR: 96 YW: 1237 YR: 97 ADG: 3.4 %IMF: 1.76 Rat: 78 REA: 14.0 TI: 96
K LRX BUCKEYE 72Y DESTINY BUCKEYE
R MISS DEVORE P422 LRX MS CEASAR 62T
 BH RIGHT TIME 520E
 MISS ARNOLD J1889

CE	BW	WW	YW	MCE	MILK	MW	STAY	CW	YG	MARB	BF	REA	API	TI
6.4	2.9	67.6	90.6	10.8	20.1	53.9	16.1	27.4	-0.28	-0.16	-0.063	0.60	91.3	59.7
75%	70%	35%	55%	35%	70%	50%	95%	50%	65%	99%	35%	85%	99%	90%

- Big middled and thick made
- Outcross bull sired by Buckeye
- Dam is a super easy-keeping, nice-uddered cow



Lot 48

48 CROSSHAIR 118B

#2894873

BD: 4/10/14 PUREBRED POLLED RED Dam's Age: 7
 BW: 108 WW: 707 WR: 97 YW: 1337 YR: 104 ADG: 3.9 %IMF: 2.37 Rat: 105 REA: 17.9 TI: 122

K CDI TRUMP CARD 210Y | NF TRUMP S582
 | CDI MS SHEAR FORCE 71T
R DAVES G S 538 892 | DAVES G SLAM R538
 | MISS DEVORE N353

CE	BW	WW	YW	MCE	MILK	MW	STAY	CW	YG	MARB	BF	REA	API	TI
4.7	5.2	67.0	105.7	10.0	27.1	60.6	20.0	40.7	-0.39	0.01	-0.057	1.14	105.5	62.7
90%	99%	35%	20%	45%	15%	15%	60%	10%	15%	80%	55%	3%	85%	80%

- Wide topped with a big ribeye
- Stout from end to end
- Sure to sire a tremendous set of feeder cattle



Lot 49

49 CROSSHAIR 134B

#2894822

BD: 4/13/14 PUREBRED POLLED RED Dam's Age: 7
 BW: 93 WW: 793 WR: 109 YW: 1377 YR: 107 ADG: 3.6 %IMF: 2.47 Rat: 109 REA: 14.5 TI: 99

K ELLINGSON IDEAL X13 | THSF FREEDOM 300N
 | ELLINGSON POWERLINE S681
R DAVES R DREAM 830 | DILLONS K217 RED DREAM
 | DAVES G SLAM 600

CE	BW	WW	YW	MCE	MILK	MW	STAY	CW	YG	MARB	BF	REA	API	TI
6.6	2.0	79.7	122.8	16.4	20.9	60.7	24.9	45.7	-0.27	0.08	-0.064	0.78	131.1	74.9
75%	55%	4%	2%	1%	60%	15%	15%	4%	70%	65%	35%	55%	30%	15%

- Dark red and homo polled
- Super long bodied
- If you want a stretch out a set of cows, this is your guy ranking in top 4% WW and 2% YW



Lot 50

50 CROSSHAIR 148B

#2894864

BD: 4/23/14 PUREBRED POLLED RED Dam's Age: 6
 BW: 102 WW: 684 WR: 94 YW: 1313 YR: 102 ADG: 3.9 %IMF: 2.15 Rat: 95 REA: 15.1 TI: 103

K CDI TRUMP CARD 210Y | NF TRUMP S582
 | CDI MS SHEAR FORCE 71T
R CHSR TNTSF 936 | TNT SHEAR FORCE T278
 | DAVES RS 746

CE	BW	WW	YW	MCE	MILK	MW	STAY	CW	YG	MARB	BF	REA	API	TI
9.3	4.0	65.9	102.8	11.5	26.0	59.0	23.8	37.1	-0.32	0.05	-0.048	0.97	122.6	65.0
45%	90%	40%	25%	25%	25%	20%	20%	20%	45%	75%	75%	20%	50%	65%

- Moderate framed
- Deep bodied and gained well on test
- Dam has had a bull in sale or heifer in the replacement pen every year



Lot 51

51 CROSSHAIR 153B

#2894808

BD: 4/29/14 3/4 SIMMENTAL POLLED RED Dam's Age: 4
 BW: 95 WW: 775 WR: 107 YW: 1438 YR: 112 ADG: 4.2 %IMF: 2.32 Rat: 103 REA: 16.2 TI: 110

K ELLINGSON KLONDIKE Y123 | WS BEEF MAKER R13
 | ELLINGSON MS TEDDY U894
R CHSR BIRMINGHAM X142 | 8004 KUHN'S BIRMINGHAM
 | MISS DEVORE P473

CE	BW	WW	YW	MCE	MILK	MW	STAY	CW	YG	MARB	BF	REA	API	TI
6.0	3.5	86.4	145.6	9.6	23.3	66.5		62.0	-0.19	0.17	-0.033	0.99	109.5	77.0
90%	95%	1%	1%	30%	50%	2%	%	1%	55%	80%	50%	4%	70%	20%

- Homo Polled
- Big-time power bull
- Dark red and moves with ease - long and thick to boot
- A younger bull that you don't want to miss, you'll like him better every day



Lot 52

52 CROSSHAIR 154B #2894815
 BD: 4/29/14 PUREBRED POLLED RED Dam's Age: 3
 BW: 81 WW: 754 WR: 104 YW: 1277 YR: 100 ADG: 3.3 %IMF: 2.38 Rat: 105 REA: 14.0 TI: 96
K SRF FORCE 213Z HOOKS SHEAR FORCE 38K
R CHSR MS ALL IN 6Z SRF MISS 044X
 WS ALL IN W111
 CHSR GUN 848 X53

CE	BW	WW	YW	MCE	MILK	MW	STAY	CW	YG	MARB	BF	REA	API	TI
15.7	-0.9	72.1	97.9	13.4	29.6	65.7	26.5	26.0	-0.31	0.23	-0.037	0.88	154.4	79.2
3%	10%	20%	35%	10%	10%	3%	5%	55%	50%	30%	90%	30%	2%	4%

- Calving-ease prospect
- Great phenotype
- Thick made and out of nice young dam



Lot 53

53 CROSSHAIR 156B #2894874
 BD: 5/3/14 3/4 SIMMENTAL POLLED RED Dam's Age: 5
 BW: 61 WW: 697 WR: 96 YW: 1164 YR: 91 ADG: 3 %IMF: 2.52 Rat: 112 REA: 14.8 TI: 101
K ELLINGSON IDEAL X13 THSF FREEDOM 300N
R CHSR MAJOR LEAGUE X1 ELLINGSON POWERLINE S681
 LCC MAJOR LEAGUE A502M
 DAVES GUNNER 838

CE	BW	WW	YW	MCE	MILK	MW	STAY	CW	YG	MARB	BF	REA	API	TI
9.5	-1.2	62.3	88.5	11.9	16.8	47.9		20.4	-0.34	0.12	-0.053	0.76	122.8	66.4
60%	25%	45%	60%	10%	95%	80%	%	70%	10%	85%	25%	25%	50%	60%

- Low birth Ideal son
- Smooth-made with a nice, small head and moderate bone
- Good disposition and dark red

**Thank you for your confidence in our programs
 and your support at the sale.
 If we can be of any assistance with your new
 purchases, please don't hesitate to call!**



Hailey and Brinley



Brinley and Hailey



Red Angus Guide to EPDs

*Courtesy of the Red Angus Association of America
For more information on EPDs, visit redangus.org.*

HB HerdBuilder Index – Need bulls for developing a profitable cowherd and maximizing the value of marketed progeny? Select a bull with a high HB value.

GM GridMaster Index – If you market all of your calf crop and want to increase the value of that calf crop, select a bull with a high GM value to maximize your profit.

CED Calving Ease Direct – Breeding Heifers? Select bulls with a high CED to increase the probability that the heifers will calve unassisted.

BW..... Birth Weight – Predicts differences in birth weight. BW is included in the CED EPD, so simplify your decisions by selecting bulls based on CED instead of BW.

WW Weaning Weight and **YW** Yearling Weight – Predicts differences in weight at weaning and yearling. While selection based on these growth measures can increase your payweight, be cautious what the bull's other EPDs are.

Milk Milk – Predicts differences in weaning weight of daughter's progeny due to milk production.

ME Maintenance Energy – Selecting bulls with a lower ME EPD will decrease the amount of feed his daughters will require to maintain body weight.

HPG.... Heifer Pregnancy – Retaining heifers? Select bulls with a high HPG to increase the percentage of exposures that result in a calving observation.

CEM Calving Ease Maternal – Another number to pay attention to if you are retaining heifers. Selecting bulls with a high CEM will increase the probability of those daughters calving unassisted.

STAY.... Stayability – The most important trait if your goal is developing cows that stay productive, thus increasing your profitability. Bulls that have a high Stay EPD are expected to sire daughters that remain productive in the herd until at least 6 years of age.


MARB .. Marbling Score – Select bulls with high MARB EPD to increase the number of progeny that grade Choice or Prime.

YG Yield Grade – Marketing calves on a grid? Placing selection pressure on YG EPD will decrease the number of YG discounts on grid-marketed progeny.

CW..... Carcass Weight – Selecting bulls with a high CW EPD will increase the weight of the hanging carcass, which directly impacts revenue.

REA Rib Eye Area – Need to add muscle? Select bulls with a high REA EPD to increase rib eye area, which favorably increases Yield Grade.

FAT Backfat – Need to reduce waste in carcasses? Select bulls with a low FAT EPD to reduce backfat, which favorably increases Yield Grade.

 *Crosshair Simmental & Kuhn's Red Angus Production Sale*

Simmental Guide to EPDs

*Courtesy of the America Simmental Association
For more information on EPDs, visit simmental.org.*

CE Calving Ease – predicts the ease with which a bull's calves are born to first-calf heifers or mature cows. Larger number indicates higher percentage of unassisted births for calves sired by this bull.

BW..... Birth Weight – predicts the difference in average birth weight of a bull's progeny compared to other bulls.

WW Weaning Weight – predicts the difference in average 205-day weight of a bull's progeny.

YW..... Yearling Weight – predicts the difference in average 365-day weight of a bull's progeny compared to other bulls.

MCE Maternal Calving Ease – The ease with which a sire's daughters calve as first-calf heifers or mature cows. Larger number indicates higher percentage of unassisted births for calves born out of this sire's daughters.

Milk Milk – predicts the milking ability of a bull's daughter. A positive value indicates above average milking ability.

MWW Maternal Weaning Weight – predicts the weaning weight of a bull's daughter's calves in pounds. A positive value indicates higher-than-average weaning weights.

CW..... Carcass Weight – predicts the difference in average hot carcass weight. A positive number indicates heavier-than-average carcass weights.

REA Ribeye Area – predicts the average difference in ribeye area between the 12th and 13th rib of an animal's progeny. Express in sq. inches.

MARB .. Marbling Score – A subjective evaluation of the amount and distribution of intramuscular fat (IMF) measured between the 12th and 13th rib. A positive value indicates higher-than-average marbling.

BF or FAT Backfat – predicts the average differences between an animal's progeny in external fat thickness at the 12th and 13th rib. Express in inches at a given age endpoint.

YG Yield Grade – predicts the average differences in cutability and is expressed as a deviation. A negative or lower value is desirable just as a lower Yield Grade is desirable.

STAY Stayability – predicts the probability that a sire's daughters entering the herd will stay in production through 6 years of age. A higher value indicates greater stayability.

API All-Purpose Index – Evaluates sires for use on the entire cow herd with a portion of their daughters required to maintain herd size and the remaining progeny put on feed.

TI Terminal Index – Evaluates sires for use on mature Angus cows with all offspring put on feed. Maternal traits are not considered in this index.



Ben & Cassie Kleppe
3220 48th St SE
Dawson, ND 58428

FIRST-CLASS MAIL
U.S. POSTAGE PAID
LivestockDirect
PERMIT NO. 29

POSTMASTER: TIME DATED MATERIAL

Putting the puzzle together ...

to produce more profit for your bottom line!



Production Sale

Friday, April 24, 2015

5:00 pm CDT • Napoleon Livestock • Napoleon, ND

Selling:

27 Red Angus Yearling Bulls

**26 Simmental & SimAngus™
Yearling Bulls**

Kuhn's Red Angus & Crosshair Simmentals