

# Built to Protect.

Tru-View™ Doors

## The Attractive Tru-View™ Door with the Screen that Keeps Intruders Out, Withstands Bending, Breaking, Smashing and Pulling.

### SPECIFICATIONS:

#### 1.0 GENERAL

**1.1 Scope** – Tru-View™ Security Screen Doors of the type and sizes in the plans and/or as called for in this specification shall be furnished with all necessary hardware, fasteners and miscellaneous equipment as herein specified and shall be manufactured by R. LANG COMPANY or equal, the basic design to be a tubular master frame with integral stainless steel mesh.

#### 2.0 MATERIALS

**2.1 Alloys** – Aluminum shall be commercial quality and of proper alloy for door construction, free from defects impairing strength and durability. All extruded sections shall be of 6063-T5 alloy and temper.

**2.2 Door Members** – Tubular door stile shall be extruded aluminum, and exposed face width shall be at least 3" x 1" thick with 0.062" nominal wall thickness. Z-bar surround shall be 1-1/8" x 1-1/2" with 0.050" nominal wall thickness. The bottom expander exposed face width shall be at least 1-3/4" x 1-1/8" deep with 0.050" nominal wall thickness.

**2.3 Mesh** – 316 Series Stainless Steel, .032 wire diameter woven in a 12 x 12 mesh & epoxy coated for additional corrosion protection.

**2.4 Hardware** – Hardware shall be corrosion resistant materials compatible with aluminum. The heavy duty pneumatic door closer shall have a 1-1/4" tube diameter, and 10-1/4" length. The handle set shall include a keyed cylinder lock with an inside thumb turn, stainless steel strike plate.

**2.6 Glass Panel(s)** – (Optional) Glass panel(s) shall consist of an outer perimeter frame of extruded aluminum screwed with external fasteners. Glass shall be 1/8" thick tempered clear.

#### 3.0 CONSTRUCTION

**3.1 Assembly** – Doors shall be assembled in a secure and workmanlike manner. The tubular master frame shall be of mitred construction joined at each corner by four (4) screws into an extruded aluminum gusset. Doors contain three (3) stainless steel hinges with two (2) bronze bushings per hinge leaf, each hinge securely fastened to the main frame.

#### 4.0 FINISH

**4.1 Anodizing** – All extruded frame members, Z-bars, expanders shall be anodized 201-R1 commercial bronze.

**4.2 Paint** – All extruded frame members, Z-bars, expanders shall be high-gloss white thermal setting polyester coated.

Pre-Hung Style	Fits Opening Width	Fits Opening Height	Hinge Expander Style	Fits Opening Width	Fits Opening Height
30" x 80"	29-7/8" to 30-1/8"	79-3/4" to 81-1/4"	30" x 80"	29-7/8" to 30-5/8"	79-3/4" to 81-1/4"
32" x 80"	31-7/8" to 32-1/8"	79-3/4" to 81-1/4"	32" x 80"	31-7/8" to 32-5/8"	79-3/4" to 81-1/4"
36" x 80"	35-7/8" to 36-1/8"	79-3/4" to 81-1/4"	36" x 80"	35-7/8" to 36-5/8"	79-3/4" to 81-1/4"

Please visit our complete line of products:  
[www.truframe.com](http://www.truframe.com)  
[www.greenhousewindows.com](http://www.greenhousewindows.com)  
[www.truframesecuritydoor.com](http://www.truframesecuritydoor.com)  
[www.rollaway.com](http://www.rollaway.com)



**TRU-FRAME®**  
 A name you can build on.  
 8240 W. Doe Visalia, CA 93291  
 P.O. Box 7960, Visalia, CA 93290  
 1-800-677-5264 • Fax: 1-888-526-4329  
 sales@truframe.com • www.truframe.com



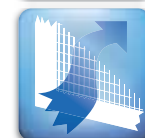
R. Lang Company  
 Visalia, Richmond & Sacramento, California

# Built to Protect.

Tru-View™ Doors



**Security** Stainless steel mesh offers a clear and unobstructed view.



**Offers more ventilation** than a conventional screen door.



**Pet resistant.** Dogs, and cats are kept safe and secure.



**TRU-FRAME®**  
 A name you can build on.



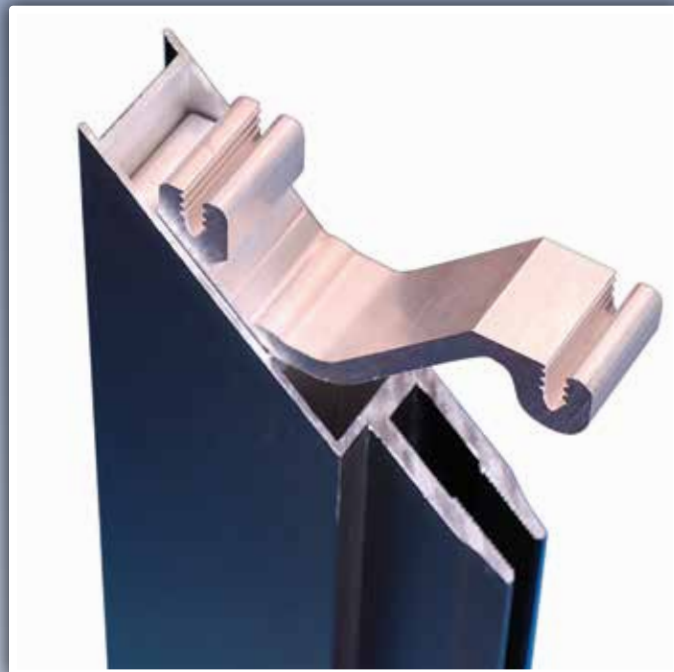


# Built to protect your family when strangers approach your door.

## The Tru-View™ Security Screen Door. Keeping the view without sacrificing quality, security or beauty.

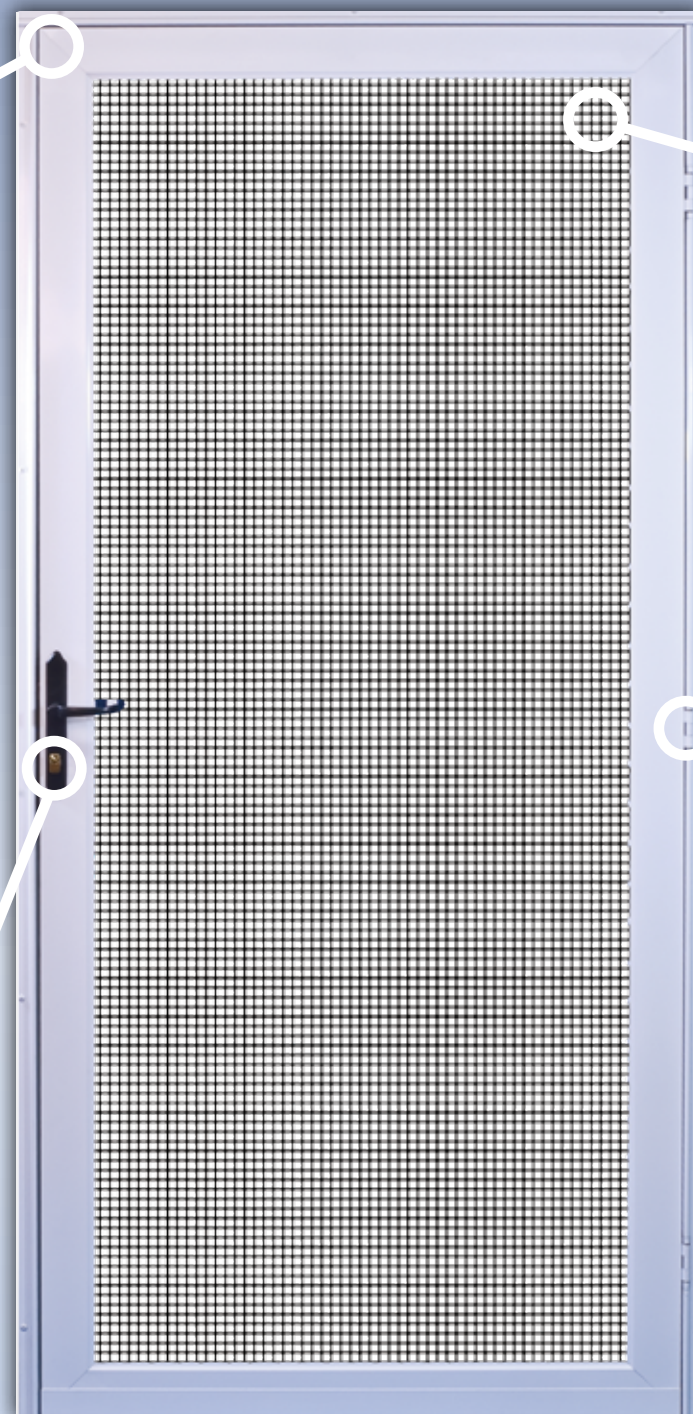
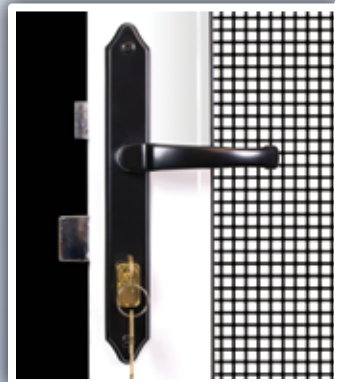


Details of the Tru-Frame® five-year warranty may be found on the warranty certificate issued with each security screen door.



- Heavy gauge extruded aluminum frame is a full 3" x 1" x .062" for lasting durability.
- Available in bronze anodized or white paint finishes. Other colors are available.
- Keyed lock with inside thumb turn, steel strike plate and deep extending dead bolt lock with tumbler cylinder is virtually pick proof.
- No need to purchase additional expensive lock sets.

- High tensile strength extruded aluminum construction with four (4) screws at each corner for extra durability.
- 316 Series Stainless Steel, .032 wire diameter woven in a 12 x 12 mesh.



- Heavy duty pneumatic door closer, with adjustable closing speed, all hardware and instructions.
- Safety spring and chain retainer for additional door protection.



- Three stainless steel tamper resistant hinges.
- Pre-hung weather stripped sub frame for easy installation.
- Bottom expander includes vinyl sweep to keep bugs out.



- Optional tempered safety glass panel conserve energy as a storm door in the winter, and easily remove for warm summer weather.

- Ventilation The Tru-View™ Door can be locked securely, allowing you to safely and confidently leave your front door open day or night for ventilation.
- Visibility The Tru-View™ Door allows viewing of the outdoors and visitors with its stainless steel mesh.
- Deadbolt Security Combined with the high tensile strength aluminum construction, the deadbolt lock affords the best protection available. The deadbolt lock cannot be pried open by a metal or plastic insert.
- Mesh 316 Series Stainless Steel, .032 wire diameter woven in a 12 x 12 mesh & epoxy coated for additional corrosion protection.
- Pet Resistant Have a large dog but can't have him in the house with a flimsy front screen door? Feel safe and secure knowing that you and your pets are safe.
- Rust Free With extruded aluminum construction, the Tru-View™ Door won't rust and is ideal for coastal environments.
- Easy Operating With concealed stainless steel hinges and extruded aluminum construction, the Tru-View™ Door swings freely and easy.
- Easy Installation Pre-hung or hinge-expander installation is simple and easy. With complete instructions and hardware, the Tru-View™ Door provides everything you need for the do-it-yourself homeowner.
- French Door Option Tru-Frame® Security Screen Doors are also available with a French Door Kit for double doors, and include all hardware. (Hinge expander only)
- Special Sizes Available by special order.

### GUARANTEED TO OPEN AND CLOSE 100,000 TIMES.



**TRU-FRAME®**  
A name you can build on.