

THE SECOND INNING

Luxury, Healthy, Enjoy

HELPING YOU
LIVE YOUR
LIFE



LIVE HOME IN FARM CENTER



OUR JOURNEY



**SUCCESS
IS A JOURNEY, NOT A
DESTINATION.
THE DOING IS OFTEN
MORE IMPORTANT THAN
THE OUTCOME**

KNOW MORE :- 9999-66-2245, 844-744-7444



Foundation

2007

2008



**OPEN OLD AGE
CENTER FOR 15
PERSONS**

**STARTED A CENTER
IN HARYANA**

2011

2014

**OPEN A LUXURY CENTER
FOR 40 PERSONS**

2015

**HEALTH COMP. CHILD
EDUCATION, SKILL
DEVELOPMENT FOR
WOMEN**

2017



**OPEN A RETIREMENT
CENTER**

**OPEN A SELLER CENTER FOR 100
PERSONS, TARGET SINCE 2030
OPEN 10 OLD AGE CENTER IN ALL OUR
INDIA**

2019



YOUR SECOND CHILDHOOD BEGINS AS YOU GROW OLDER

ENQUIRY ANY TIME :- 844-744-7444



OUR ACHIEVEMENTS

- ✦ All centers are in Farm Houses. Experience of 13 years where you can trust on us.
- ✦ Best Old Age Center, comes in TOP 5 centers in Delhi NCR, approved by Help Age India.
- ✦ Most of our Senior Citizens are from UK, USA, Singapore, Canada, Germany.
- ✦ All Senior Citizens of our center are highly post retired persons, like Government Retired, Defense Retired, Army Retired, Indian Police Service retired, Air Force retired, Cricket retired, Business Retired, NRI's.
- ✦ All Major Centers in 4 (four) Metro Cities / Posh Areas.
- ✦

KNOW MORE :- 9999-66-2245, 844-744-7444



**IT'S TIME TO CELEBRATE, BE FREE OF RESPONSBLITY AND LEAVE
ALL WORRIES BEHIND.**

IT IS TIME TO LIVE YOUR LIFE YOUR WAY AND BE SURROUNDED BY LOVE AND CARE

The Second Inning Senior Citizen Center is place where we take your worries and convert them into happiness. The Second Inning Offers you a dignified lifestyle in a king

The Second Inning is a well- planned center to ensure that you are always Happy, Comfortable, Secured and Looked after- Focusing on the minor as well as major requirements starting from Food & Diet Security & Medical Care from House- Keeping to entertainment planning of the Senior Citizen People.

Most of the Senior citizens at Second Inning are Government department Retd, Business man, Senior Managers who are used to certain kind of lifestyle like an NRI. Second Inning will be a premium project providing dignity living with focus on top- of –the-line security, healthcare and wellness services besides housekeeping, concierge and help desk services along with regular features like Table Tansies, Musical Evening, Group Discussion, Indoor & Outdoor Games etc. Several retired NRIs who don't want to continue living abroad, had evinced keen interest in projects like ours as they feel they would be better cared ford in the Second Inning Home. The biggest concern for retired NRIs is failing health and security. We are coming with all the trapping of a modern lifestyles, plus security and health care facilities. These are serviced apartments, making life for easier for aging residents.

ANY SUGGECTION & ENQUIREY :- 844-744-7444



HAPPY
D PARENTS
DAY



LITTLE

Millennium



professionals care that helps your loved on
de; Luxury room, Big washroom, Green G
all, Indoor game, Table tennis, Snook
backup Outdoor activity, Many more
Long Terms
Short Terms
Day / Night Care

24 HOURS CUSTOMER SUPPORT 224

THE
FIRST
TOWARD

Your Child's P
should be as
Turn Your Little
at Little Millenni

ADMISSION
Age Group: 2 to 5+



For Admission Enquiry,
Call: +91 8009940522, 7942247371
Visit: Little Millennium, E31, Park
Side of Apollo, KONDU Road, Noida

IN LITTLE + 3RD FLOOR ONLY + OVER 100



WHAT IS AN ELDER DAY CARE ?

A place where elderly persons can come together socialize, address their need to connect with similar age people for love, friendships and sharing of their stories. A place where they will have freedom, compassionate care, love, affection, medical attention, learning and importantly opportunity to contribute back to society.



WHY ?

While we are working closely with elderly for last 12 years in Delhi and India's we heard and felt need for day care & senior citizen centre. The need is specifically for Elderly staying alone or away from their kids. The lack socialization that impacts their emotional as well physical well being. They lack empathetic ears, opportunity to contribute to society, opportunity to learn new things, friends to share their joys, stories, frustration in safe, trustworthy environment. This will also help family to focus their time on their career without any compromise.



WHAT IS OFFERED ?

WE WILL PROVIDE THEM WITH BELOW FACILITY



**Pick up & Drop
Services**



**Breakfast/ Lunch
Snacks/Dinner**



**Fun Activities,
Group Games**



**Spiritual Session
(Satsang, Prayer)**



Yoga Session



**Vital Parameter like
BP/ Sugar Checks**



**Doctors/
Physiotherapist**



**Activities to
contribute back to
society**



**Learn Digital
Technology
(Mobile/ Laptop &
WIFI)**



**Mini Theater,
Table Tennis,
Snooker**

THE SECOND INNING elderly Health Services is Delhi one of the most trusted center elderly health service, serving in Delhi & India's , more than 12 years.

For enquiries & registration call us on **9999-66-2245, 844-744-7444** or send us email on thesecondinningclub@gmail.com . We have limited seats left so please do advance booking.

ELDERLY CARE ACTIVITIES & SERVICES

Many day center offer additional services,
including:



Counseling



**Yoga
Classes**



**Indoor &
Outdoor
Activities**



**Physiotherapy
room**



**Exercise
Classes**



**Group
Discussion**

Adult day service centers are also designed to offer family support. They could caregiver support groups, offer education on topics such as managing difficult or confusing behaviors and safety in the center, provide, counseling, and maintain contacts with community resources.

Seniors attending adult day service centers are eligible for funding from a number from a sources including Medicaid waiver programs, Veteran's programs. Guidelines for receiving these funds are different in every state.

ON PENAL HOSPITAL :- FORTIS, SPINAL, BATRA, ROCKLAND,

AAKASH.



IF YOU ANSWER “YES” TO ANY OF THE FOLLOWING QUESTIONS, SERVICES MAY BENEFIT BOTH YOU AND YOUR LOVED ONE:

- ✗ Do you worry about your loved one’s safety at center while they are alone ?
- ✗ Do you worry about that your loved ones is unhappy or bored sitting at center all day ?
- ✗ Do your worry about the ongoing health of your loved ones?
- ✗ Do they need assistance during the day to remember to properly take their medications or to eat healthy meals ?
- ✗ Do you want help to be able to keep your loved ones at center as long as possible ?
- ✗ Does your loved ones seems depressed ?
- ✗ Does your loved ones have no one to talk to them ?

“When my dad moved in with us due to his inability to live alone, I thought I was going to have to quit my job and stay second in line center for him. But second in line has provided a safe, stimulation and homelike environment. I Continue to work and don’t worry about my dad during those hours, thanks to second in line center . And the added benefits is that he has made new friend and loves attending.





MAINTENANCE

A component property maintenance company adds significant value to your investments and living experience, which is why at second inning. We will tell you that a good management company is worth their weight in gold. Here are a few ways that a good property maintenance company adds value.

MANAGEMENT DUTIES INCLUDES

- Hiring and training of manpower for total
- Operation of the project
- To operate and maintain
- Water Filtration Plant
- Waste water treatment plants
- Rainwater Harvesting System
- Electrical power Supply System
- Generators

TO OPERATE COMPLETE FOOD SERVICE.

- Hiring experienced staffs, training of cooks and helpers
- Purchasing right ingredients
- Planning proper menus for appetizing meals
- To provide for other services
- Housekeeping Service
- Ambulance service
- Laundry/ Dry Cleaning Service
- Organize Events
- Personal Care
- Maintaining health records
- Scheduled Entertainments
- Scheduled Transportation
- Taxi service





CILITIES

- 24x7 Ambulance service in center
- 365 days Nurse on duty
- Doctors on call
- Pharmacy in center
- Yoga & Meditation
- Maintaining Health Records
- Medial Assistance room
- Blood Collection services lab
- Physiotherapist on call
- Medical Facilities in close proximity
- Tie ups with hospital with preferred rates.
- Ward boy when required non assistance
- Diet Consultation
- Eye care camp of out side
- Health Care camp of out side

ACTIVITY

Always Listening- Always Learning I ready to accept changes based on researched feedback.

Though we have studies various numbers of similar senior living projects, though we have consulted various hospitality industry people, though we have a good number of inputs from event management companies.

On Pannel Hospitals Fortis, Spinal, Rockland, Batra, Aakash, etc.





OTHER FACILITY AND SERVICE

- Spiritual
- Temple
- Aarti
- Satsang live & Pre- recorded
- Special trip to City mall / temples.
- Periodic Katha and Privation in Campus
- Spiritual lectures by prominent speaker
- Secured Environment
- Emergency response system in each room
- Secured center with single entry
- Security staff on duty 24x7
- Intercom system in each room
- CCTV cameras in common areas
- Main door bell with camera
- 24x7 manager in campus
- center Keeping
- Common services
- Cleaning of Common areas
- Pest Control
- Gardening
- Cleaning & Washing of Utensils
- Linen Change/ Bed Sheet
- On call services
- Plumber/ Electrician, Carpenter on call
- Laundry/ Dry cleaning on call
- Air Conditioner maintenance on call
- Anti skid tiles
- Grab handle in bathroom,
- Wheel chairs friendly staff
- Security guard
- Round edge furniture and corners
- Windows with grills & mosquito net
- Bigger switches at low height
- Night Lamps
- 24 hours water supply





FESTIVALS & CELEBRATIONS



FESTIVALS & EVENTS

- Musical Nights
- Aarti/ Satsang/ Katha
- Film Shows
- Birthday Celebration
- Group watching of Drama/ Films
- Social Get together
- Sports Day
- Nature walk
- Children's day
- Blood Donation Camp
- Transport facility
- Holi
- Deepawali
- Lohdi
- Fun Fair
- Quiz competition
- Kitty party
- Cookery show
- Art of living classes
- Karaoke Night
- Social activities
- Shopping tour
- Father's & Mother's day celebration
- Valentine day
- New year celebration
- Food festival
- Energy conserving

And Special Republic Day, Independence Day, Gandhi Jayanti

- Fun Fair
- Quiz competition
- Kitty party
- Cookery show
- Art of living classes
- Karaoke Night
- Housie
- Social activities
- Shopping tour
- Father's & Mother's day celebration
- Valentine day
- New year celebration
- Food festival
- Energy conserving
- Street Lights
- Water Filtration Plant

- Nature walk
- Children's day
- Transport facility
- Insurance & Medi claim services
- Environment friendly features
- Solar powered lights within campus
- Musical Nights
- Aarti/ Satsang/ Katha
- Film Shows
- Birthday Celebration
- Group watching of Drama/ Films
- Social Get together
- Sports Day
- Approx 65% open space in the campus

Local Tour, Hill Station, Theater, Outdoor Picnic





DAILY LIFESTYLE

Timing 6-9 am

- Regular get fresh Tea Morning News Paper watch TV @ Home
- Health Morning Nature Walk with Friends/ Spouse/ Alone Mild workout at garden.
- Spiritual Prayers Aarti in Mandir Pooja Meditation
- Entertainment experience Soothing Music in common
- Activities Debate the latest news with friends Gup Shup in Groups

Timing 9-12 pm

- Regular Breakfast/ Snacks/ In Apartment Tea Morning News Paper
- Health Mild Workout at Gym with trainer Swim at Pool
- Spiritual Pravachan
- Entertainment Play Cards carom Board Chess



DAY NIGHT ROUTINE

Timing 12-4 pm

- Regular lunch at center/ Central Common Dining or prepare Food/ Order Food Afternoon Sleep Reading Books.
- Entertainment TV Serials at center Old Movies in TV Room.
- Activities Play Cards, Carom Board, Chess Internet Library, Table Tennis

Timing 6-9:30 pm

- Regular Dinner in center/ Central Common Dining or Prepare food/ Order food reading books TV time
- Health Meditation
- Spiritual Bhajan Sandhya recorded Satsang
- Entertainment Sing –a-long old songs enjoy the Soft Light ambience of campus TV together
- Activities GupShup in Group Table Tennis Volley Ball.

Timing 4-6 pm

- Regular High Tea
- Health Evening Walk Mild workout at garden
- Spiritual Prayers Aarti in Mandir Pooja Katha
- Activities Days Celebration Hobby Centre Periodic Activities

Timing 9:30 -6 am

- Have a very Good tension Free Sleep.







PERIODIC ACTIVITIES

- Kaun Banega Crorepati
- Kitty party
- Cookery show
- Field trips
- Shopping Trip
- Social Get Together
- Antakshri/ Musical Night
- Medical Camps
- Birthday/ Anniversary Celebration
- Group Stage Events Viz, Songs
Jokes, Stories, Shayari
- Leisure/ Entertainment /Recreation
- Health Club with Instructor
- Salon and Spa
- Arts & Craft Studio
- Garden with Walking
- Educational & Spiritual Classes
- Internet Services with WIFI
- Coffee/ Tea Services
- Gazebo in sitting area
- Nature Walk
- Garden Swing
- Video Conference Room Home
Theater with Large collection of
classic movie

Musical Evening, Ghazal Night, Poetry Event



OUTDOOR ACTIVITIES





TERMS & CONDITIONS

Our facility works on a security deposit model. The Security Deposit is non- interest bearing. There are two distinct components of the security deposits 80% of the total security deposit amount is fully refundable and 20% of the total deposit is the Non- refundable.

We offer a window of 2 months to our resident to settle in. In case they decide to leave within 2 months from the date of booking, 100% of the security deposit will be refunded.

THE SECURITY DEPOSITS ARE DEFINED AS PER THE CATEGORY OF ROOM.

- | | | | |
|-----------|------------------------|---|--|
| 1 | Single Room | : | Separate living area and bedroom |
| 2. | Shearing Room | : | Combined sitting and sleeping area. |
| 3. | Triple Shearing | : | Triple shearing with bathroom living area. |

INCLUDE MONTHLY CHARGES

While staying at the second inning senior citizen center, the resident is required to pay monthly charges for the use of all services and facilities

- | | | | |
|-----------|------------------------|---|--|
| 1 | Single Room | : | Separate living area and bedroom |
| 2. | Shearing Room | : | Combined sitting and sleeping area. |
| 3. | Triple Shearing | : | Triple shearing with bathroom living area. |



CENTER FACILITIES

MONTHLY CHARGES FOR SHARED SERVICES: THESE

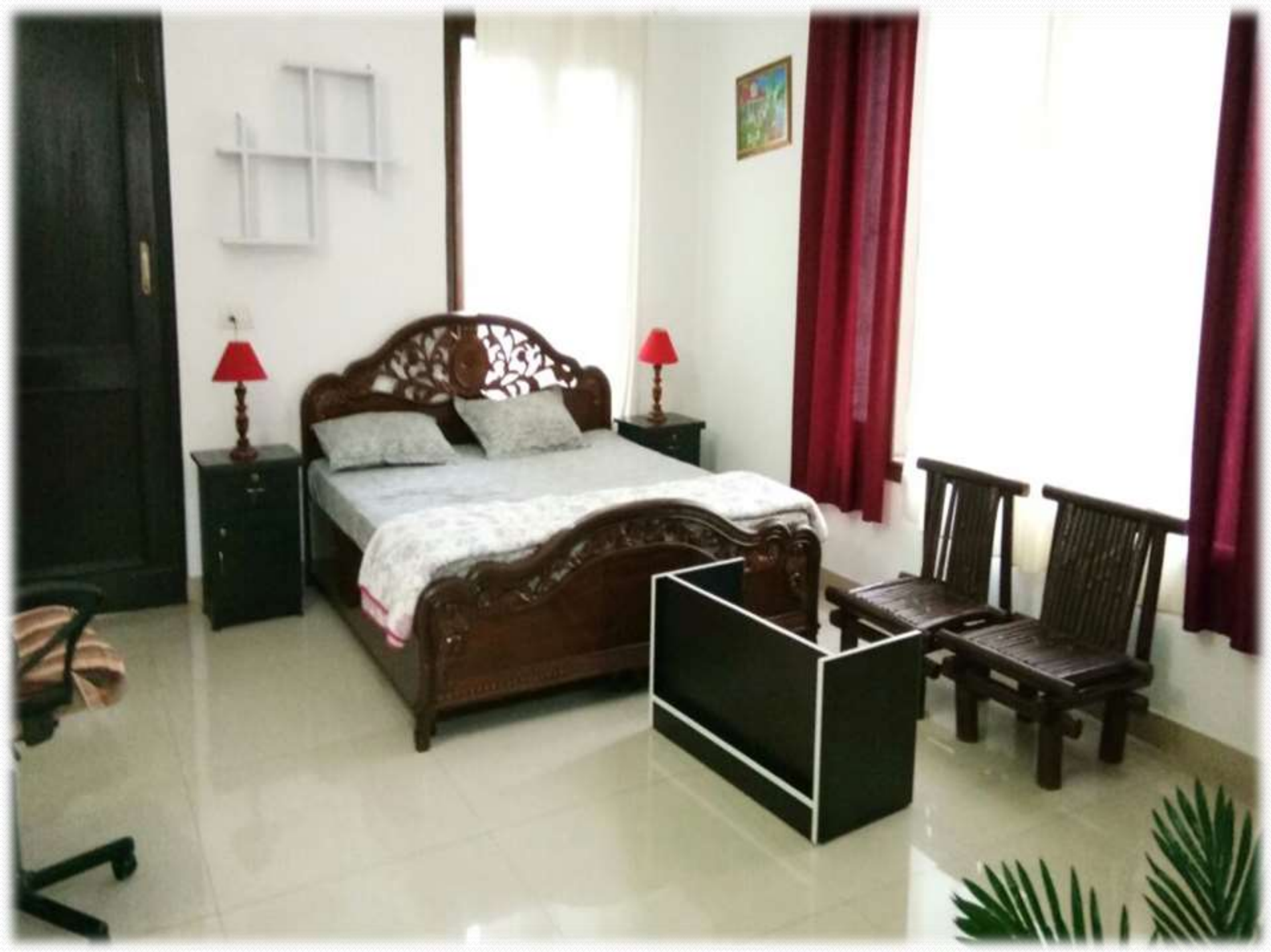
INCLUDE

- Maintenance of furniture, furnishing and equipments provided in individuals living units as well as all common areas
- F&B services
- Housekeeping Services
- Laundry for bed linen and soft furnishings
- 24X7 medical supports- Monitoring of general health and preventives health check ups by the in center medical professionals, maintenance of health records of all residents, emergency evacuation to partner hospital.
- Physiotherapy clinic as chargeable
- DTH TV connection in each unit as well as in the entertainment areas.
- Internet connection
- Morning newspaper delivered in each unit
- All facility such as the business centre, library, lounge, cards room, indoor game room, meditation/ yoga centre.
- 24X7 Utility back up
- Overall facility management
- Events and recreational activities.



PACKAGES

- These are specific packages available for short term stay, which is good option for people requiring accommodation for less than 6 months. These package are cater to meet the logistic requirements of individuals whose children are living overseas, involved in job profiles which requires frequent travelling or people living overseas who like to spend time in INDIA during festivals and extreme weather conditions. The charges include the below mentioned services.
- F&B and Housekeeping services
- All facilities such as the business centre, library,
- Lounges, cards room, indoor games room.
- Physiotherapy Clinic
- DTH TV Connection & Internet
- Professionals, maintenance of health records of all residents
- Emergency evacuation to partner hospital
- Electricity & Laundry Charges
- 24X7 Security
- 24X7 Medical supports- Monitoring of general health and preventive health checks- ups by Staff.
- In- center Medical Meditation/ Yoga Centre
- Events and Recreational activities



QUESTIONS

Q What is Senior living or The Second Inning Retirement Home ?

A At the onset of the time when maintaining your own center, daily chores, cooking, house- keeping, gardening etc. becomes more of a headache than enjoyment. The Second Inning retirement center brings such independent living which brings solution and a gateway to a new hassle- free life. The Second Inning retirement center, offers such accommodation where retirement life can be spent independently , enjoyably and in companionship of friends. The Second Inning retirement center is a place where you can spend time if you continue to do whatever you choose. It gives you opportunity to continue living your life full of activities, enjoying meals, sitting in gardens and all this fully independently.

Q How will The Second Inning retirement Home enhance my lifestyle ?

A The Second Inning retirement center has been designed especially for fulfilling the needs and offering all facilities to the seniors. The security, medical and health, cleaning and maintaining the center, recreation and spiritual needs have been kept in mind while designing The Second Inning retirement Home

KNOW MORE :- 9999-66-2245, 844-744-7444



Helping you. Live your life

Compassionate, professional care that helps your loved ones live their lives-and helps you live your life
Services include; Luxury room, Big washroom, Green Garden, Reading room, Medical assistant
Doctor on call, Indoor game, Table tennis, Snooker table, Card room, Mini theater, Security
Power backup Outdoor activity, Many more.....

Living Arrangement

The Second Inning

Luxury. Health. Enjoy

Long terms

Short terms

Day / Night care

24X7 HELP LINE 011-65-123-123

24X7 CUSTOMER SUPPORT :- 9999-66-2245

Farm House-26, Park Lane, Church Road, Vasant kunj N.D.

FREQUENTLY ASKED QUESTIONS

Q How is The Second Inning Retirement Home different than other homes ?

A No homes other than The Second Inning provides 365 days of fun and activities specially designed for retirement Senior Citizen. Each and every object in the campus is made and designed with its unique 51+ audience in mind. The Second Inning is specially designed for the seniors so it will be equipped with non-skid paths, Anti Skid floorings in center, round corners, rails & handles, 24 hours accessible reception service, wheelchair friendly toilets with grab rails and many other items, equipments and services to ensure the safety and security of seniors. Dedicated emergency staff response 24x7 at the press of an emergency button that is conveniently located in common area state-of-the-art, 24x7 manned securities, with access control, CCTV monitoring, and video door phones at the entrance of center. Facilitation and coordination of medical services, reminders about treatments, appointments and medication schedules, assistance with arranging transport or escort, if required, for appointments or doctors visits.

Q What is the difference between old age center and The Second Inning retirement Home ?

A Senior citizens 'choose' to star in Hassel free living. Seniors who can afford the cost of the accommodation and cost of living usually stay here. Senior citizens who can manage medications and daily activities on their own who like enjoy living in a community with their peers Seniors citizens who wish to enjoy extra facilities, services, activities & dignified life

KNOW MORE :- 9999-66-2245, 844-744-7444

LOCATION

Q Where is The Second Inning located and how can one reach the place ?

A The Second Inning retirement Home is conveniently located from Vasant Kunj South Delhi India i.e. around 10 kms (20minutes) The Second Inning can be easily accessed from NH.8 it is approximately 8 km from International/ Domestic Airport at Delhi.

Distance from	Apx distance (in kms)	in minutes
AIRPORT	10	20
FORTIS HOSP.	2.6	08
CHHATARPUR METRO	3.5	15
AMBIENCE MALL	06	25
TEMPLE	02	10
CHURCH	01	10
SHOPPING MALL	02	30

KNOW MORE :- 9999-66-2245, 844-744-7444

ROAD MAP

MAHIPAL PUR

DISTANCE OF THE SECOND INNING

9 K.M. INTERNATIONAL AIRPORT T-3

8 K.M. DOMESTIC AIRPORT T-2

5 K.M. WORLD CLASS HOSPITAL (SPINAL INJURY)

4 K.M. MALL (VASANT SQUARE)

3 K.M. WORLD CLASS HOSPITAL (FORTIC GROUP)

3.5 K.M. AMBIENCE MALL

5 K.M. CHATTERPUR METRO

4.5 K.M. ILBS HOSPITAL



KNOW MORE :- 9999-66-2245, 844-744-7444

26, Park Lane, Church Road, Vasant kunj

HERE ARE SOME FREQUENTLY ASKED QUESTIONS

Q How far away are the hospitals and Nursing Homes from The Second Inning Retirement Home ? What in case of an emergency ?

A Fortis Hospital- in vasant kunj (10 min away), Spinal Hospital in vasant kunj (25 min away), ILBS Hosp. in vasnat kunj(15min away). A number of reputed medical practitioners and dentists have their clinics or nursing homes in a 20 min traveling radius. You can choose from a large number of doctors, super specialists, physiotherapists, pathologists, homeopathic and ayurvedic practitioners. In addition, The Second Inning has a dedicated van or Ambulance and driver standing 24x7, to take you to doctor or a hospital in an emergency. Also services of other professionals like Lawyers, Tax and Financial Consultants, bankers etc. can be arranged for you by The Second Inning on chargeable basis.

Q What are the transportation facilities to reach The Second Inning from main cities ?

A The Second Inning will provide point to point transport service for main city locations. The Second Inning shall also provide taxi- on- call service on chargeable basis. The Second Inning is well connected Roads, Railway and Airport in near distance.

KNOW MORE :- 9999-66-2245, 844-744-7444



HERE ARE SOME FREQUENTLY ASKED QUESTIONS

Q What are the special features in The Second Inning for Seniors ?

A Comfortable and customized designed suitable for seniors : The Second Inning is specially designed for the seniors so it will be equipped with non-skid paths, Anti-skid flooring in center, round corners, rails & handles, 24 hours accessible reception service, wheelchair friendly toilets with grab rails and many other items, equipments and services to ensure the safety and security of seniors.

Services: All services as mentioned in a [Features & Services](#) shall be provided to the residents.

SECURITY :

Dedicated 24x7 manned security staff, immediate medical help, dedicated emergency staff response 24x7 at the press of an emergency button that is conveniently located in each room are the key features of The Second Inning. Facilitation and coordination of medical services, reminders about treatments, appointments and medication schedules, assistance with specification will be provided as mentioned in [Features & Services](#).

KNOW MORE :- 9999-66-2245, 844-744-7444



FACILITIES & SERVICES

Q What do I need to bring with me when I check in at resident ?

A Nothing, except your personal belongings and any other items that may be required for your day to day requirements. Home is fully equipped and furnished with all basic necessities as mentioned [Furnishing](#). These are maintained and subsequently replaced by owner as and where necessary.

Q What are the common facilities at The Second Inning Retirement Home ?

A An all common facilities that **The Second Inning Retirement Home** offers to residents as listed in web link of [Features & Services](#) . Some of these are :

- Health Club Facility
- Meditation Hall/ Temple
- Multipurpose Hall
- Indoor Games- Billiards, Chess, Carom, Cards, Table Tennis
- Library and Gym
- Provision shop and a drug store with in the campus
- Water bodies and fountains for walk around and relaxation.

KNOW MORE :- 9999-66-2245, 844-744-7444



THANK YOU

For Your Time And Consideration

THE SECOND INNING

26, Park Lane, Church Road, Vasant Kunj, New Delhi – 110070

Contact – 9999-66-2245, 9999-66-2145

Email- thesecondinningclub@gmail.com

www.thesecondinninghome.com