

“The Seagull” Concept

...

By Jordan Ingersoll



Mood Board (Acts I-IV)

“The Seagull” Inspo

- Set in 1895 (19th Century) Russia. (Neoclassical inspired by Greek and Roman architecture + Gothic Revival.)
- Takes place at the Sorin Estate which back faces a beautiful lake. Can be seen from the front of the house as well.

Inspired by: *Bykovo Estate*





Foliage in Russia:

- Birch, Spruce, and Oak trees. (Specifics mentions of trees in script.)
- Long, humid, cold winters and short summers.



Preliminary Sketches:

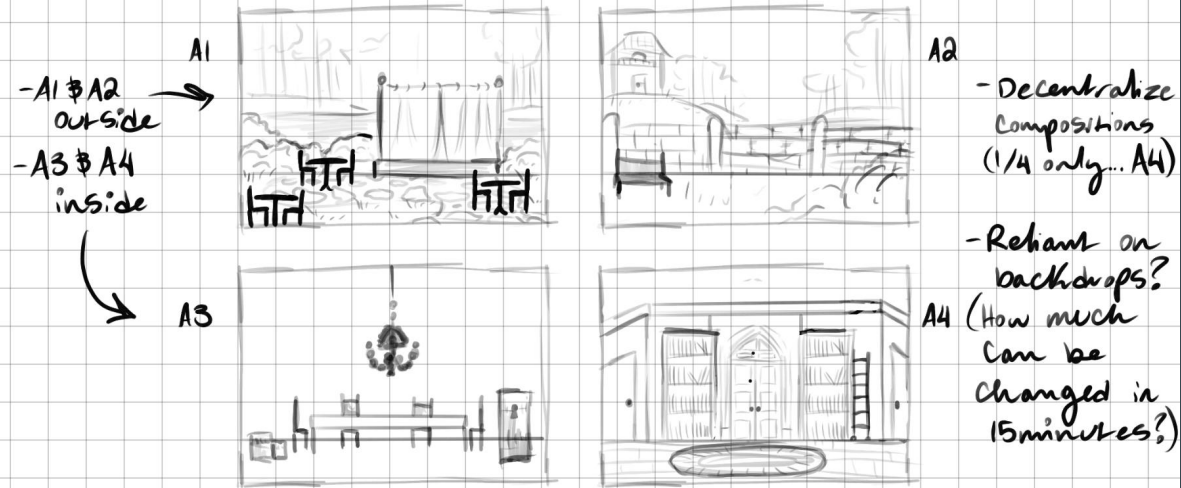
- Decentralizing composition until the final Act.
- Utilizing backdrops to ease transitions.
- Dark and moody. Lots of practical lights. (Lamps.)
- AI & AII are outside of the Sorin Estate (back and front respectively.)
- AIII & AIV are inside of the estate after intermission. (How much change-over can be done in that time frame?)

Act 1: Back of Sorin Estate, Theatre

Act 2: Gardens in front of the Sorin Estate (w/Terrace)

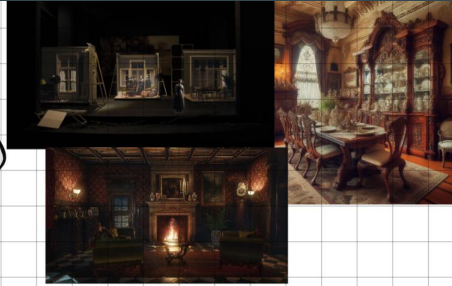
Act 3: Dining Room

Act 4: Sitting/Writing Room (Front-facing) w/Terrace

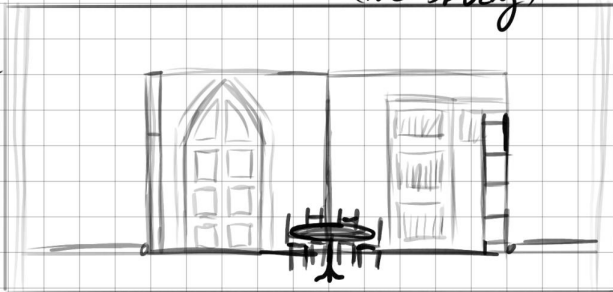


Preliminary Sketches p2:

- Most sets are bare-bones, or take place exclusively outside
- Utilizing tracks (one US, one CS)
- Wagon for the stage (USL)
- Wagon for the house (USR)
- Wagon for dining room (CSR): half of Study, connects
- Wagon for study (CSL): window, door, bookshelf (light?)



- Theatrical
Flat, LED tape
in stained
glass window
(change
between dining
& study)

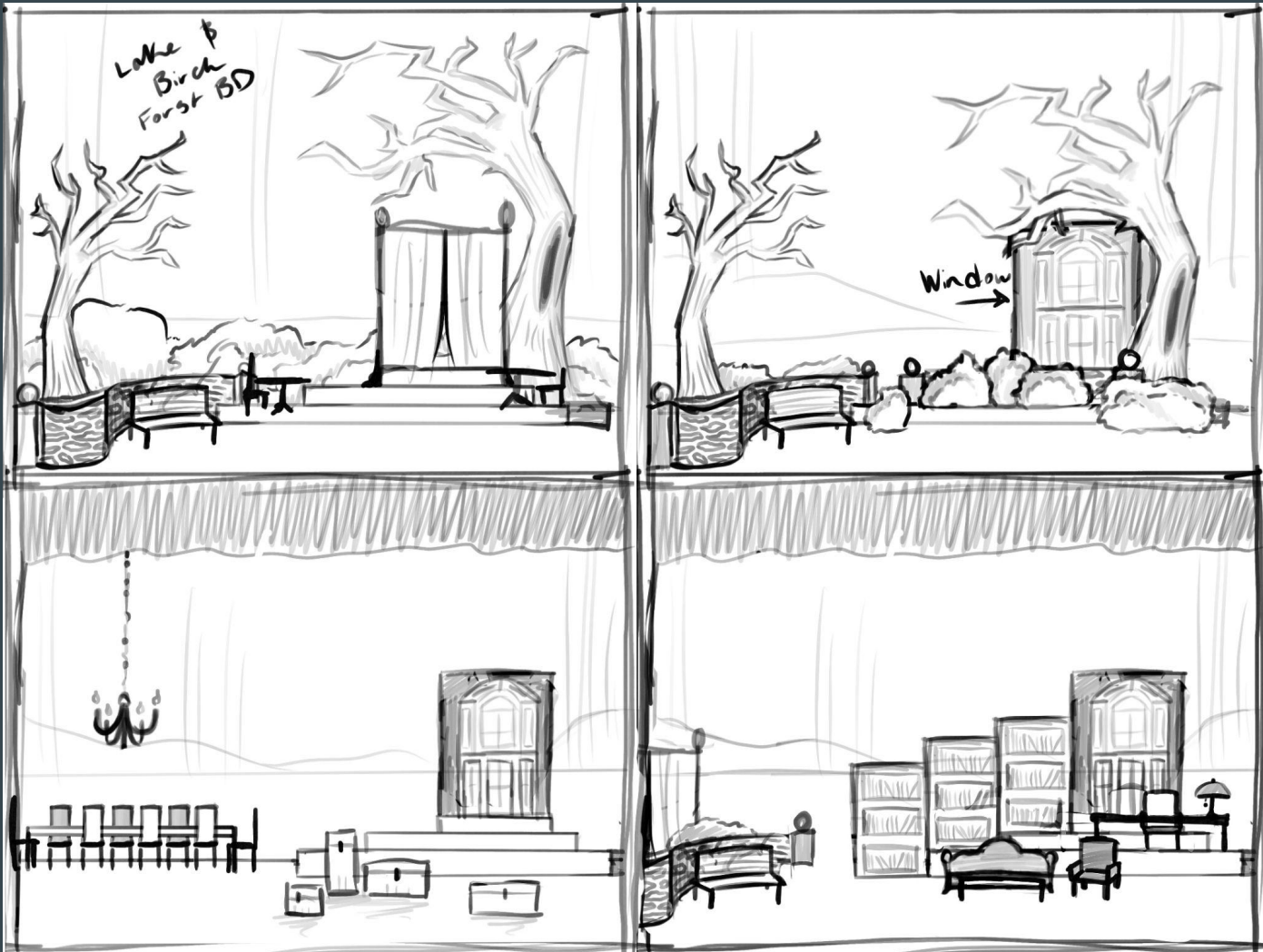
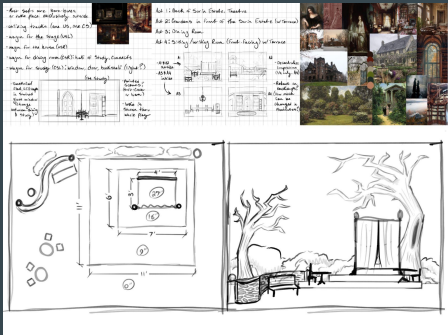


- Painted
Scenes?
(Soft-Cover
or Iuam)

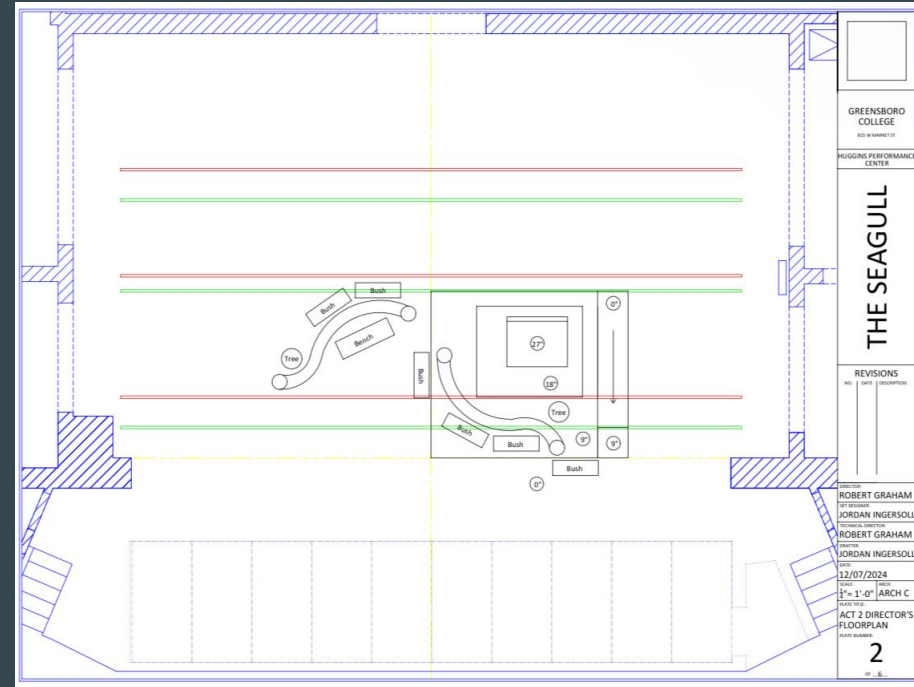
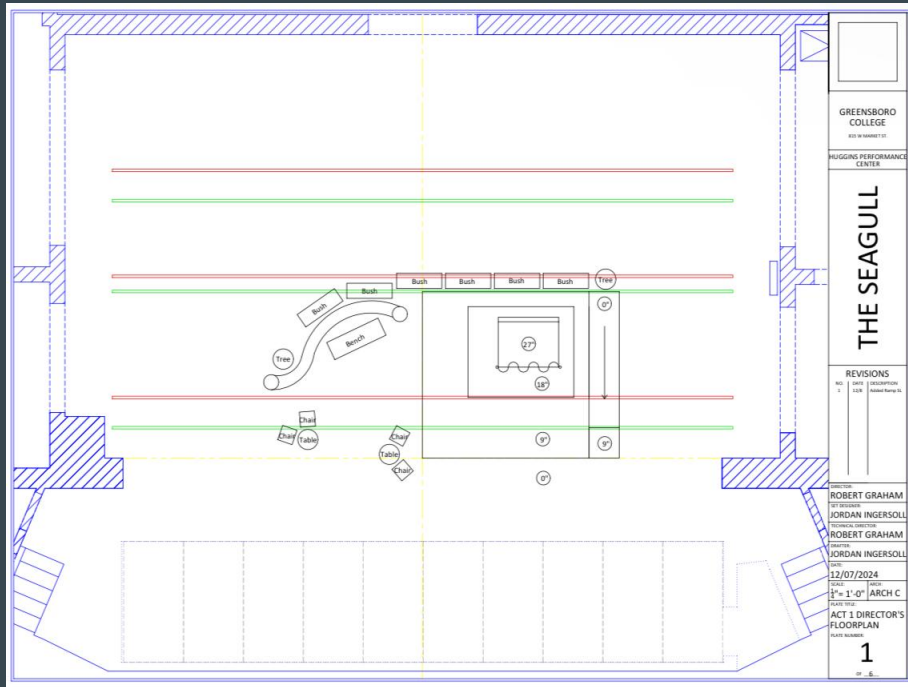
- Lake is
shown thru
whole play



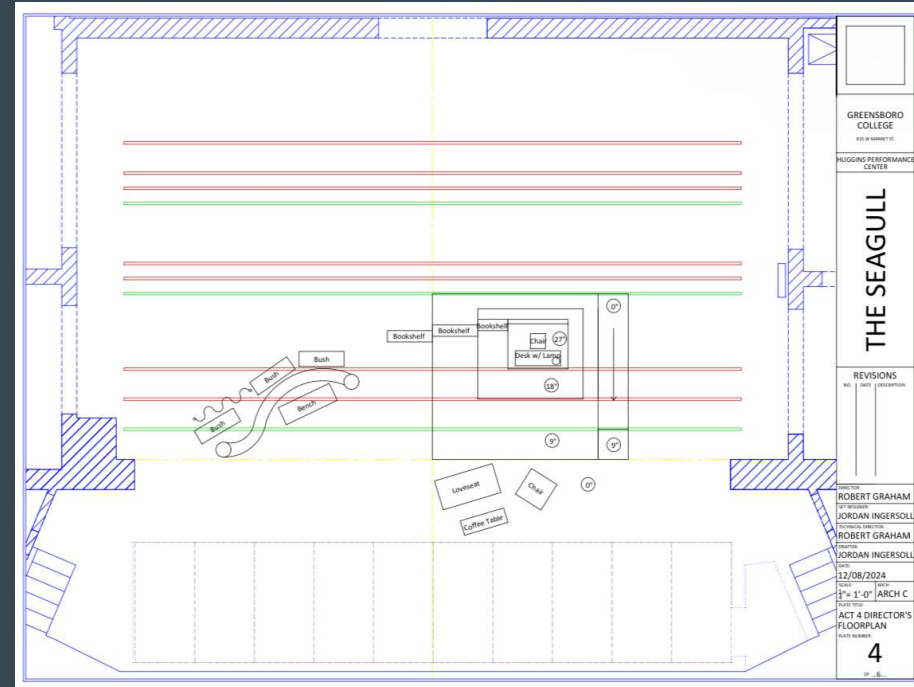
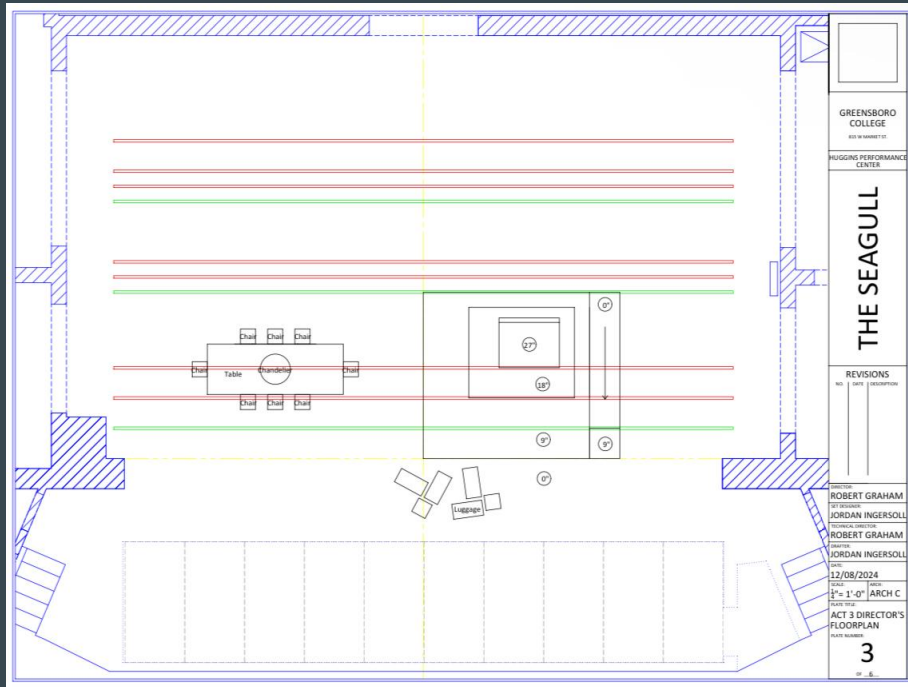
A large, ornate interior space, likely a grand hall or ballroom, featuring high ceilings with intricate moldings and a large chandelier. The room is furnished with elegant seating, including a large sofa and armchairs, and a dining area with a table and chairs. The walls are decorated with large framed paintings and ornate wall sconces.



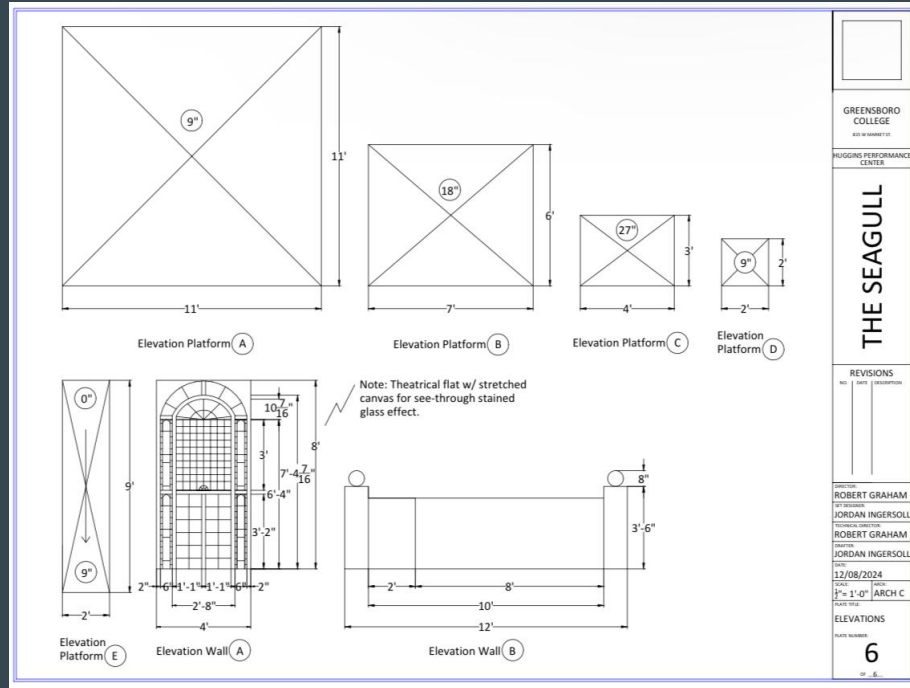
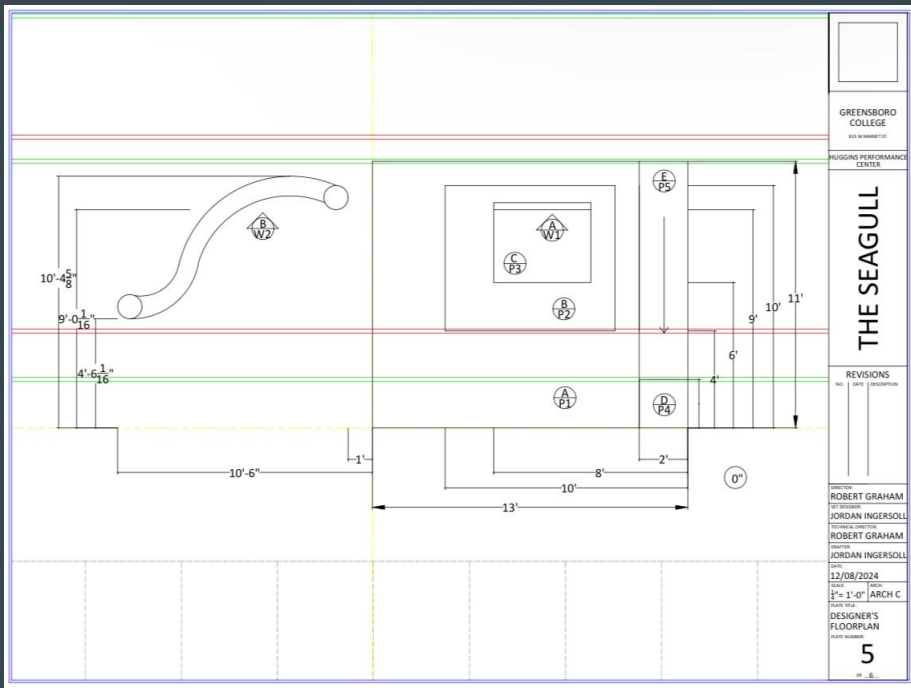
Act One & Two Ground Plans (Outside the Sorin Estate)



Act Three & Four Ground Plans (Inside the Sorin Estate)



Seagull Designer's Plan & Elevations (Platforms & Walls)



Colored Sketches

(Act One - Four)

