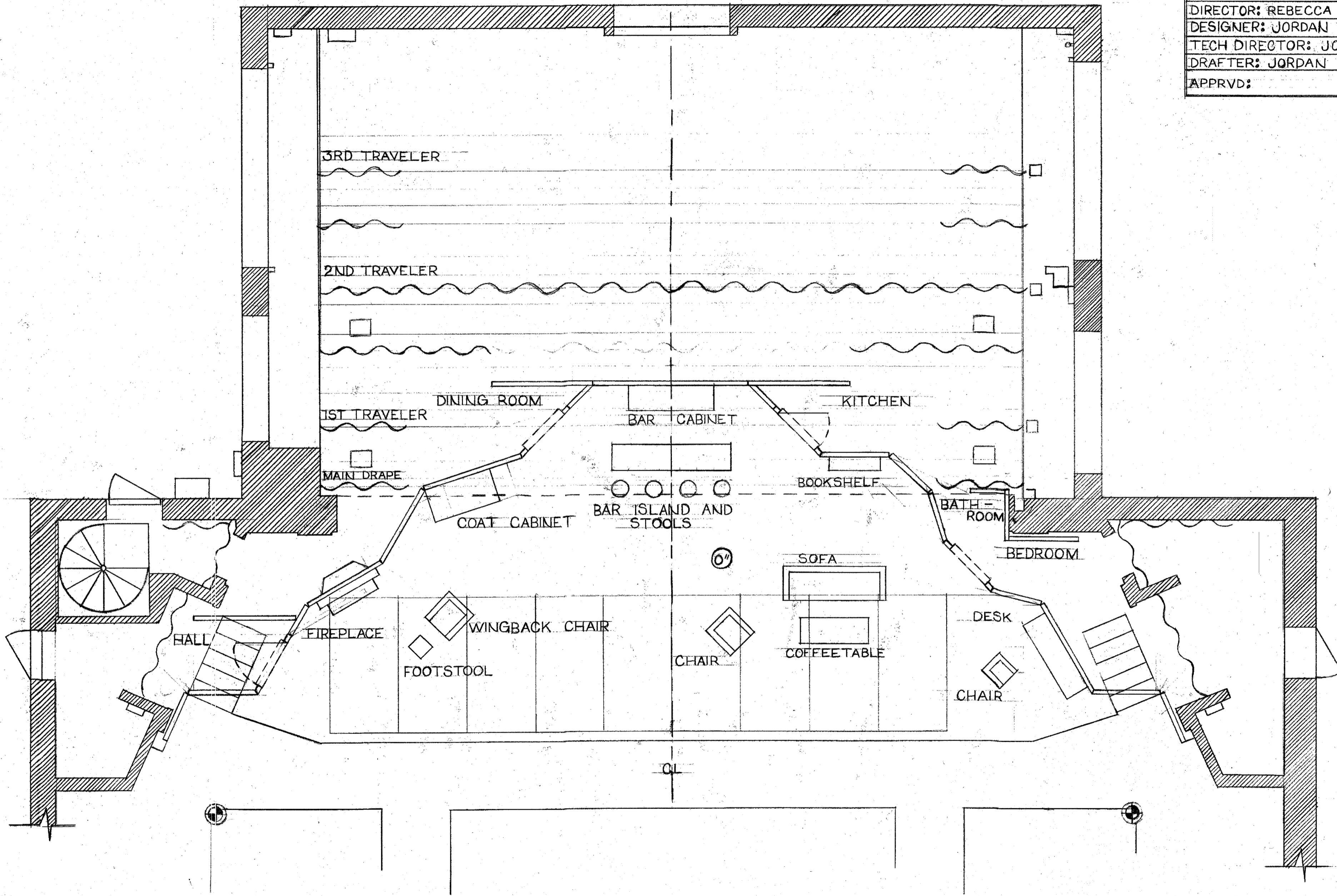
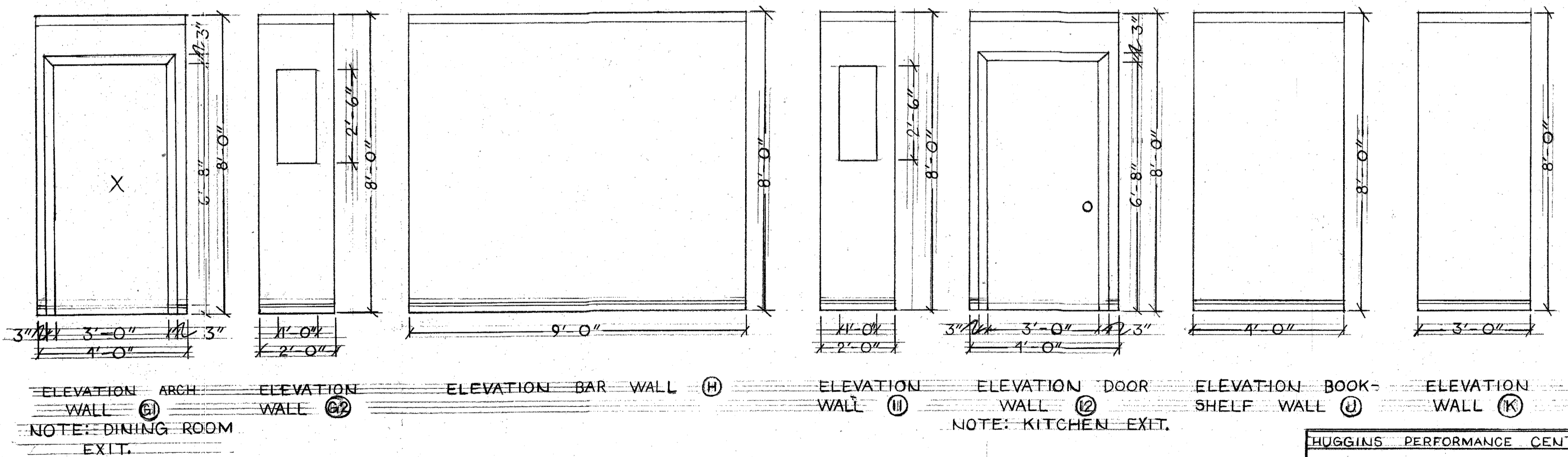
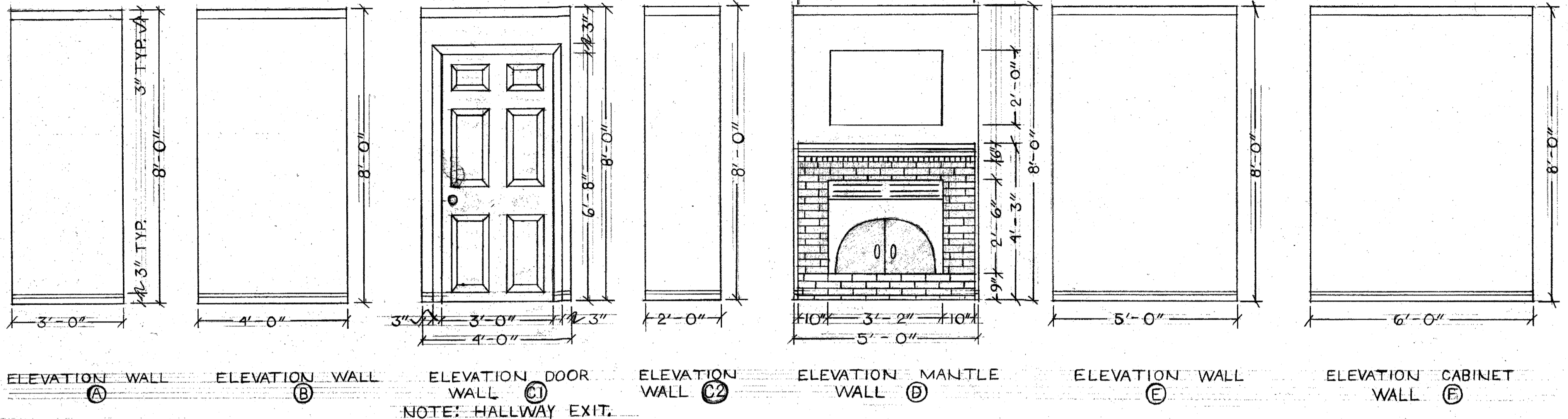


|                            |                              |
|----------------------------|------------------------------|
| HUGGINS PERFORMANCE CENTER |                              |
| LET'S MURDER MARSHA        |                              |
| DIRECTOR'S FLOORPLAN       | DWG NO.                      |
| DIRECTOR: REBECCA HAWKES   |                              |
| DESIGNER: JORDAN INGERSOLL |                              |
| TECH DIRECTOR: JOHN SAARI  | OF                           |
| DRAFTER: JORDAN INGERSOLL  |                              |
| APPRVD:                    | SCALE: 1/4" = 1'-0" 7/7/2023 |

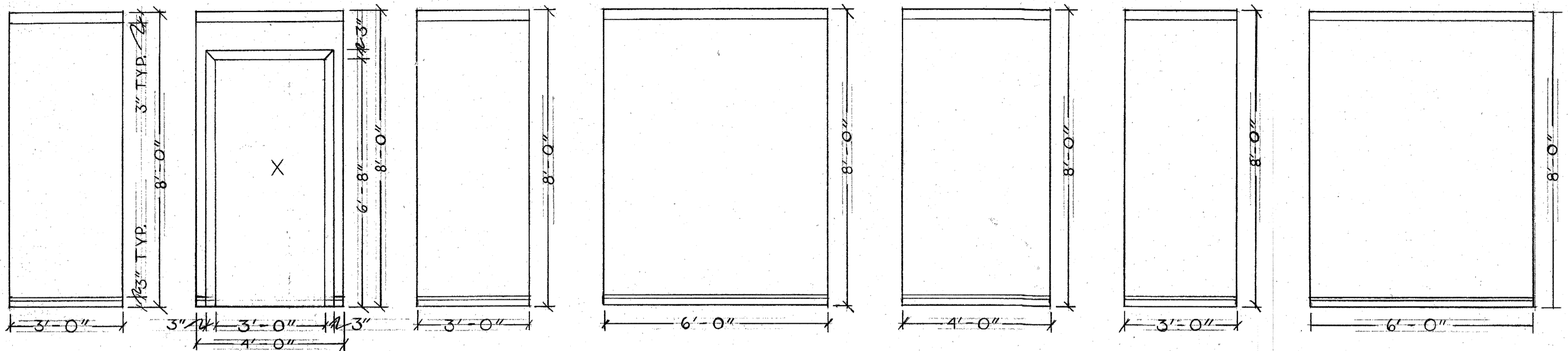


GENERAL NOTE: SCUMBLE  
AND SPATTER PINK WALLS.  
SEE PERSPECTIVE SKETCH.

NOTE: 4'-10" X 2'-0" X 9"  
RAISED MANTLE PIECE.  
SEE BOTTOM OF (D).



|                            |                              |
|----------------------------|------------------------------|
| HUGGINS PERFORMANCE CENTER |                              |
| LET'S MURDER MARSHA        |                              |
| ELEVATIONS                 | DWG NO.                      |
| DIRECTOR: REBECCA HAWKES   | 3                            |
| DESIGNER: JORDAN INGERSOLL | OF                           |
| TECH DIRECTOR: JOHN SAARI  |                              |
| DRAFTER: JORDAN INGERSOLL  |                              |
| APPRVD:                    | SCALE: 1/2" = 1'-0" 8/6/2023 |



ELEVATION WALL (L)

ELEVATION DOOR WALL (M)

ELEVATION WALL (N)

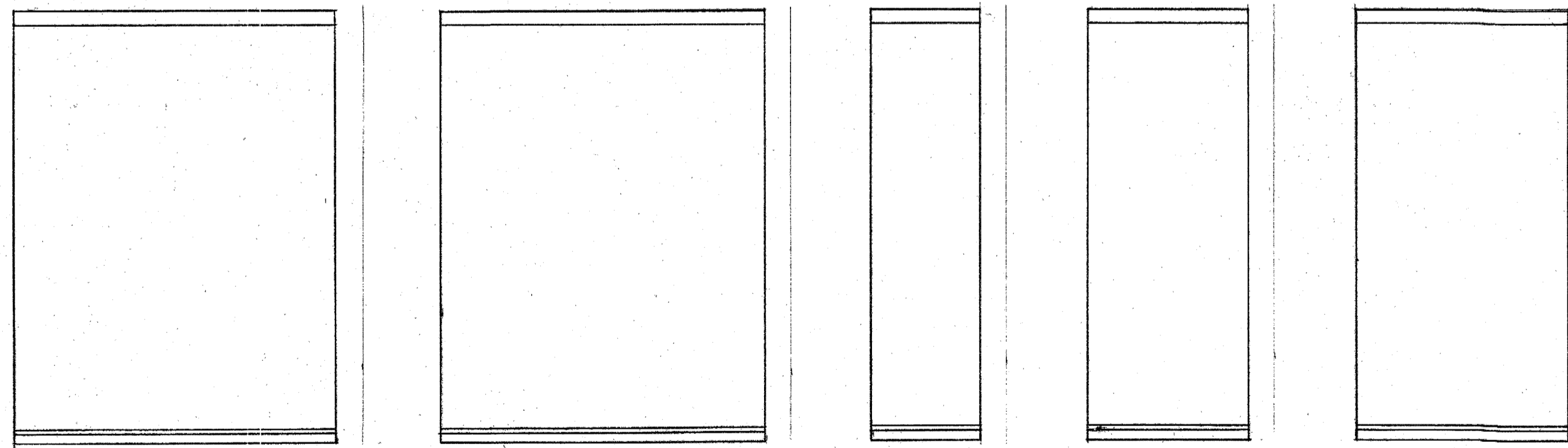
ELEVATION WALL (O)

ELEVATION WALL (P)

ELEVATION WALL (Q)

ELEVATION MASKING WALL (R)

NOTE: BEDROOM AND BATHROOM EXIT.



ELEVATION MASKING WALL (S)

ELEVATION MASKING WALL (T)

ELEVATION MASKING WALL (U)

ELEVATION MASKING WALL (V)

ELEVATION MASKING WALL (W)

|                            |                              |
|----------------------------|------------------------------|
| HUGGINS PERFORMANCE CENTER |                              |
| LET'S MURDER MARSHA        |                              |
| ELEVATIONS                 | DWG. NO. 4                   |
| DIRECTOR: REBECCA HAWKES   |                              |
| DESIGNER: JORDAN INGERSOLL |                              |
| TECH DIRECTOR: JOHN SAARI  | OF                           |
| DRAFTER: JORDAN INGERSOLL  |                              |
| APPRVD:                    | SCALE: 1/2" = 1'-0" 8/6/2023 |