

The Direction of Energy

Introduction to Nuclear Energy

Direction of Energy Nuclear Intro 12 Hours

DoE-TRG24-001 July 23 & 24 from 8:00 am to 2:30 pm MST

DoE-TRG24-002 Aug 7 & 8 from 9:00 am to 3:30 pm MST

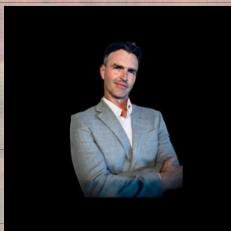
DoE-TRG24-004 Oct 16 & 17 from 10:00 am to 4:30 pm MST

\$450/attendee

\$425 with any professional association membership

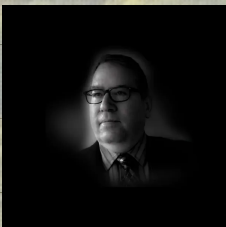
\$275/student (including high school)

15% discount on dedicated classes from 15 to 25 students.

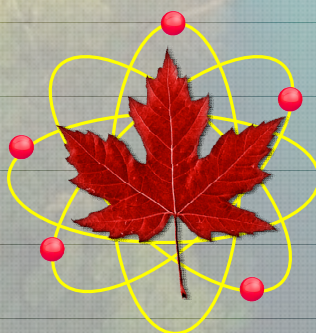


Dr. Fournier's formal graduate training was in chemical physics, with a focus on solid state electrochemistry specific to hydrogen fuel cells and battery technologies and his undergraduate training was in physics and environmental chemistry.

Currently, Dr. Fournier lives 100 km east of Calgary near the village of Rockford, where he and his family own and operate a ranch along Service Berry Creek.



Brad's been in the electrical industry for 30 years, with 20 years of that on the tools as an electrician & NAIT Electronics Engineering Technologist, Brad has worked on various electrical control systems such as motor drives and Building Automation. His bias is towards understanding the curriculum as it works in the field. Brad hones his skill as an Information Broker, bridging teams from engineering to construction, design to execution.



The Direction of Energy

Introduction to Nuclear Energy

Qty

Nuclear Intro Registration

DoE-TRG24-001	July 23, 24	from 8:00 am to 2:30 pm MST
DoE-TRG24-002	Aug 7, 8	from 9:00 am to 3:30 pm MST
DoE-TRG24-004	Oct 16, 17	from 10:00 am to 4:30 pm MST

Presentation is delivered via Zoom.

There is a noon 30 minute break.

There are mid morning and mid afternoon 20 minute breaks.

\$450/attendee

\$425 with any professional association membership

\$275/student (including high school)

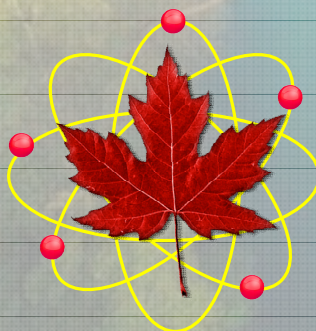
15% discount on dedicated classes from 15 to 25 students.

All fees are in Canadian Dollars.

Payment accepted Electronically, including Major Credit Card & E-Transfer.

E-Transfer registrations receive a 3% discount.

For registration, email this completed form to Info@OpenStar.ca



The Direction of Energy

Introduction to Nuclear Energy

Client Contact

Name

First

Last

Email

Discounts

Professional Association

School/University/College

Company

Position

Optional

Optional

\$450/attendee

\$425 with any professional association membership

\$275/student (including high school & Post Secondary)

15% discount on dedicated classes from 15 to 25 students.

All fees are in Canadian Dollars.

Invoicing will be sent out for payment.

Payment in full required before the first day of class.

Payment accepted Electronically, including Major Credit Card & E-Transfer.

E-Transfer registrations receive a 3% discount.

For registration, email this completed form to Info@OpenStar.ca

