

SAFE PILOTING OF MACHINERY






General Information

Author	Samantha Pritchard
Last Revision Date	25th September 2024
Related Standards & References	<ul style="list-style-type: none"> NHVR - Class 1 load carrying vehicles & special purpose vehicles https://transport.vic.gov.au/Business/Heavy-vehicles/Escort-and-pilot-vehicles/Escort-and-pilot-vehicles-overview National Transport Commission (Road Transport Legislation -- Oversize And Overmass Vehicles Regulations) Regulations 2006 (Sli No 29 Of 2006) - Schedule 1 https://classic.austlii.edu.au/au/legis/cth/num_reg/ntctloavrr2006n29o20061256/sch1.html

Responsibilities

Position	Duties
Employer	To provide workers with safe equipment and workplaces, appropriate PPE for the task, adequate training & ongoing supervision.
Workers / Operators	To follow these Safe Work Procedures and to inform your Manager of potential hazards in performing the task.

Personal Protective Equipment:

Personal Protective Equipment					
	Protective Boots (essential)	Protective clothing (essential)	UHF radio (turned on & up)	High-vis Vest (in case of emergency)	Safety Gloves (in case of emergency)

Operating Procedures

Guidelines	Chain of Responsibility (CoR)
	Under the HVNL, every party in the Chain of Responsibility (CoR) has a positive duty to ensure the safety of their activities in relation to a heavy vehicle. This duty, known as the “primary duty”, applies to the scheduling, loading and consigning of a vehicle, as well as to its operation on a road.

SAFE PILOTING OF MACHINERY

Guidelines (cont...)

The need for a pilot vehicle is determined by the level of risk in the movement of oversize load. Risk factors include the size of the load, the nature of the route and the volume of the traffic likely to be encountered.

What's the difference between a Pilot and a Certified Pilot?

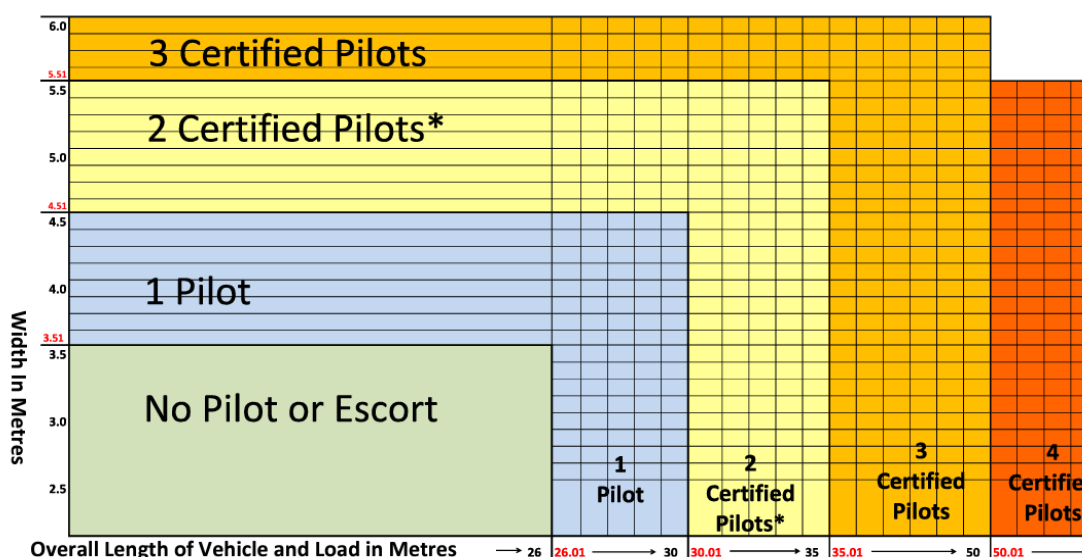
Pilot Vehicle - A vehicle that accompanies an oversize vehicle to warn other road users of the oversize vehicle's presence.

Certified Pilot - A vehicle driven by a police officer or another person authorised to direct traffic under an Australian road law.

*Refer to the below graph for determining whether an oversized vehicle requires a Pilot or Certified Pilots.

Pilot and Escort Graph Guide

Over 6m wide or 60m long - a combination of certified pilots and/or VicRoads escort vehicles will be required



NOTE: * When travelling on a freeway outside the Melbourne and Geelong Urban Areas, only one (1) Certified Pilot Vehicle is required

Note: - Number of pilot/escort vehicles required may depend on variable circumstances and will be considered on a case by case basis.

This guide does not apply to mountainous areas

Pilot Vehicle Requirements:

- "Oversize Load Ahead" double sided sign on the roof,
- Amber flashing warning light on the roof (above or below the sign, or one on either side),
- Headlights switched on, and
- Must not carry a load in the tray but must have tools or equipment to assist the oversize machinery in the case of a breakdown.

SAFE PILOTING OF MACHINERY

Guidelines (cont...)

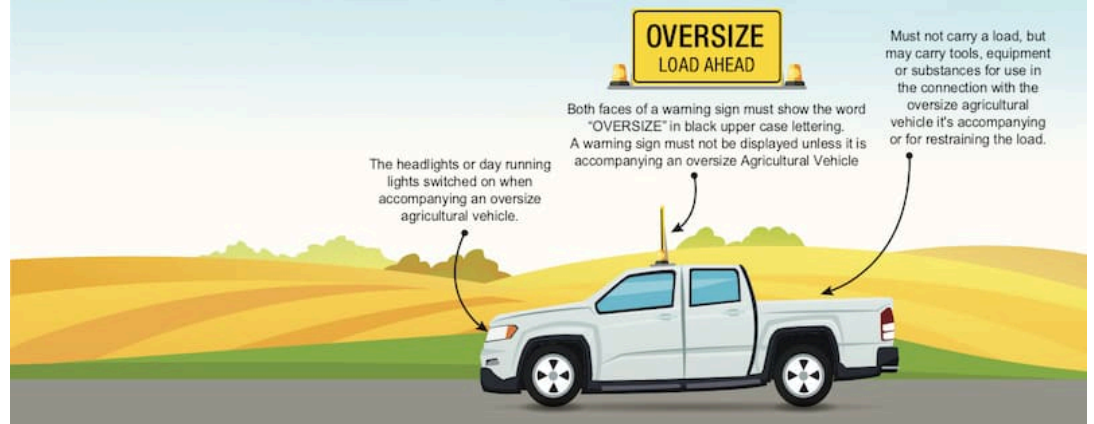
Oversized Vehicle Requirements;

- Must be escorted by another vehicle,
- "Oversize" warning signs displayed at the front and the rear of the vehicle,
- At least one warning light attached, and
- Flags attached to protruding parts of the vehicle or its attachments

Agricultural Pilot Vehicles

The vehicle driven by an Agricultural Pilots must have 4 or more wheels and a GVM of:
(a) 6.5 t or less in the case of a rear pilot vehicle, if 2 pilot vehicles are required; or
(b) 4.5 t or less in any other case.

Must have a warning sign on its roof and an amber flashing warning light, these lights must be above or below the sign or at each side.



Before Driving the Pilot Vehicle:

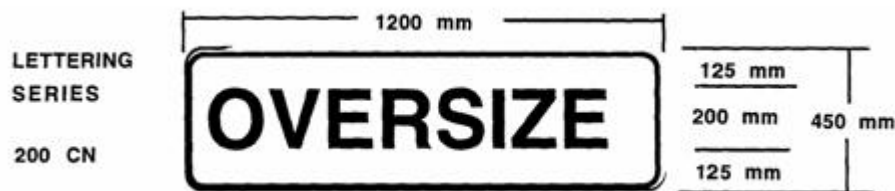
- Ensure the pilot vehicle has enough fuel and a pre-start check has been conducted.
- Ensure the ute tray is empty, except for any tools and/or equipment to assist the oversized vehicle in the case of a breakdown, including a witches hat.
- Ensure there are rigger gloves and a high-vis vest in case of a breakdown.
- Test the UHF & the flashing lights before commencing the trip.
- Ensure the sign is up and locked into place.
- Check all rear vision and side mirrors are clean and in position.
- Confirm the planned route with the driver of the oversized vehicle.

Whilst driving the Pilot Vehicle:

- The pilot vehicle's primary function is to warn oncoming traffic and ensure safe passage.
- Be aware and astute of everything around you; oncoming traffic from both directions, uneven road sides, narrow bridges, overhead powerlines, cross roads, unexpected hazards such as stock out on the road

SAFE PILOTING OF MACHINERY

- Do not get distracted by music, any passengers or unrelated incoming phone calls - only focus on the role of ensuring a safe passage for all vehicles on the road
- Do not get too far in front of the vehicle you are piloting - but far enough ahead that you can see around any corners.
- When you come to a narrow bridge, you are in control. Lots of communication is key. Let the driver know in advance of the bridge. Also announce over channel 40 to other large vehicles and trucks. When safe to do so, drive over the bridge to encourage any drivers coming from the opposite direction to wait on that side until the oversize vehicle has passed. Don't allow the oversize vehicle to start crossing the bridge until you are confident they will have a clear passage.
- Ensure your flashing lights are clearly visible at a distance of 500m to oncoming traffic - safe distances can vary depending on road conditions, visibility, and other factors.



Additional warning devices at night:

At night, an oversize vehicle or combination must display:

- (a) lights showing yellow to the front and red to the rear (known as 'side markers') no more than 2 m apart along both sides of the vehicle and along any front or rear projection; and
- (b) two red lights (known as 'rear markers') fixed to the rear of any rear-projecting load, within 400 mm of each side of the load, and at least 1 m but not more than 2.1 m above the ground; and
- (c) a warning light if the vehicle or combination, together with any load, is wider than 2.5 m or longer than 22 m.

Safe Work Procedures (SWP)

SAFE PILOTING OF MACHINERY

Operation of this Procedure

If you are unsure or unclear about any aspect of this Safe Work Procedure, or any procedural step required to safely perform the task, please seek further assistance, and do not engage in such activity.

Any Employee who does not abide by this Safe Work Procedure will be subject to disciplinary action which may include dismissal with or without notice, depending on the severity and gravity of the offending conduct.

Employee Name: _____

Employee Signature: _____ Date: _____

Supervisor Name: _____

Supervisor Signature: _____ Date: _____