

*This exhibition highlights some twenty examples of the evolution of the town of Farmville. These works move through time from a Civil War reconnaissance map of Farmville in 1864, to the development of different communities in and around the town, and eventually to the development of the downtown region. These maps are intriguing, full of history, and reveal how the town grew from a farming community to a bustling business and tobacco center.*

*A New Exhibition:  
Historic Maps of Farmville  
1864-1923  
April-June 2023*

*May Museum & Park  
3802 Main Street  
Farmville, NC 27828*



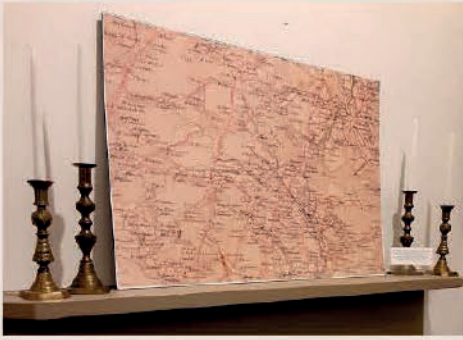
*OPEN Mon-Thurs 9:30am-1:00pm  
For Appointments Call  
252-758-6882  
Or E-mail  
[rkammerer@farmvillenc.gov](mailto:rkammerer@farmvillenc.gov)*

*The May Museum  
& Park Invites  
You To Explore A  
New Exhibition...  
Historic Maps  
of Farmville:  
1864-1923*



*April Through  
June 2023*





[1] Map of property on Main Street (New Road to Marlboro), 1911. [Map Book 2, p. 19--Pitt County Register of Deeds]

[2] Plat of the S. M. Pollard Property, 1912; showing the Post Office, and the drug store at the corner of Main and Wilson Streets. [Map Book 1, p. 6]

[3] Town Lots Divided between the heirs of S. M. Albritton and A. G. Dupree, 1913; showing James W. May house and Christian Church, Main Street. [Map Book 1, p. 5]

[4] Map of the division of land among the Belcher heirs, 1913; showing the Belcher homeplace, brickyard and Farmville Warehouse. [Map Book 1, p. 32--Pitt County Register of Deeds]

[5] Map of the division of part of the James Williams May lands, 1913 [Map Book 1, p. 16--Pitt County Register of Deeds]

[6] Map of the division of land among the Belcher heirs along Wilson Street, 1913; [Map Book 1, p. 17--Pitt County Register of Deeds]

[7] Map of the division of land among the Belcher heirs along Belcher, Pearl, George and Horne Streets, 1913.

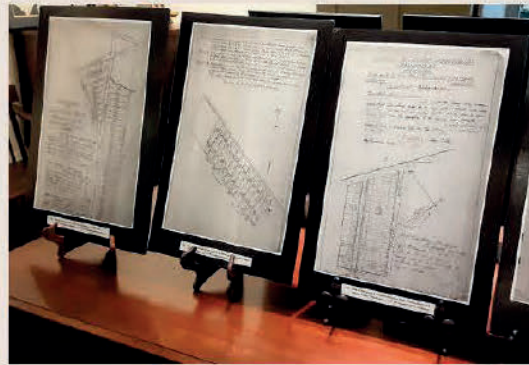
[Map Book 1, p. 10--Pitt County Register of Deeds]

[8] Map of the division of lands of Moses T. Horton, Robert L. Davis and the Norfolk-Southern Railway, 1914.

[Map Book 1, p. 49--Pitt County Register of Deeds]

[9] Map of Lincoln Park, developed by H. L. Humphrey and J. H. Darden, 1914; showing development of Division, Main, Cameron, William, Horton and Bennett Streets

[Map Book 1, p. 45--Pitt County Register of Deeds]



10] Map of part of Lincoln Park, developed by H. L. Humphrey and J. H. Darden, 1914; showing development of William, Darden, Thorne, Humphrey Streets and McKinley Ave. [Map Book 1, p. 46--Pitt County Register of Deeds]

[11] Map showing the division of Town Property of Moses T. Horton, 1914; showing the Horton Hotel. [Map Book 1, p. 39--Pitt County Register of Deeds]

[12] Map of land of H. L. Humphrey on Main Street in North Farmville, 1915. [Map Book 1, p. 112--Pitt County Register of Deeds]

[13] Map of the DeVisconti Property, 1917; showing Church, Turnage, Wilson and Horton Streets. [Map Book 1, p. 99--Pitt County Register of Deeds]



[14] Map of Contentnea Park, 1917; showing Roosevelt, Hughes and Contentnea Streets. [Map Book 1, p. 101--Pitt County Register of Deeds]

[15] Map of the George E. Moore Subdivision, 1918; showing Moore and George Streets. [Map Book 1, p. 121--Pitt County Register of Deeds]

[16] Map of the division of land among the Leggett heirs, 1920; showing buildings on Main Street. [Map Book 2, p. 142--Pitt County Register of Deeds]

[17] Map of Crestwood Park, 1923. [Map Book 1, p. 183--Pitt County Register of Deeds]

[18] Map of the Townsend Tobacco Warehouse on Main Street, 1927. [Map Book 2, p. 193--Pitt County Register of Deeds]

[19] Map of Washington Heights, 1927. [Map Book 1, p. 179--Pitt County Register of Deeds]

[20] Map of Downtown Farmville. 1923 [Sanborn Insurance Map]

[21] Portion of the J. F. Gilmer Map of Pitt County, showing the Farmville community, 1864 [NC Archives]

