



E-PENGUIN

LP02 7KW

# Portable EV Charger User's Manual

\*Please read the instructions carefully before using.



# Contents

|                                  |    |
|----------------------------------|----|
| Product Safety Information ..... | 1  |
| Product Description .....        | 3  |
| Technical Specification .....    | 4  |
| Use Precautions .....            | 5  |
| Charging Operations .....        | 7  |
| Wi-Fi Function .....             | 12 |
| Installation Method .....        | 16 |
| Warranty Conditions .....        | 17 |
| Fault Code Reference .....       | 18 |



# Product Safety Information

Thank you for purchasing and using this portable electric vehicle charger. In order to help you properly use this product, please read this user's manual carefully before charging.

## CAUTION

- Do not submerge the control box in water;
- Do not step on, pull, fold or knot the cable;
- Do not drop the control box or place heavy objects on it;
- Do not place the charging cable near high-temperature objects when charging;
- Do not place the device in the car or in a sealed space when charging;
- Do not operate the device in temperatures beyond its operating range of -25°C to +50°C;
- 32A Power- supply side input cable should be at least 3\*9mm<sup>2</sup> (recommended 3\*8mm<sup>2</sup> ) It is suggested that the power distribution is operated by professionals.

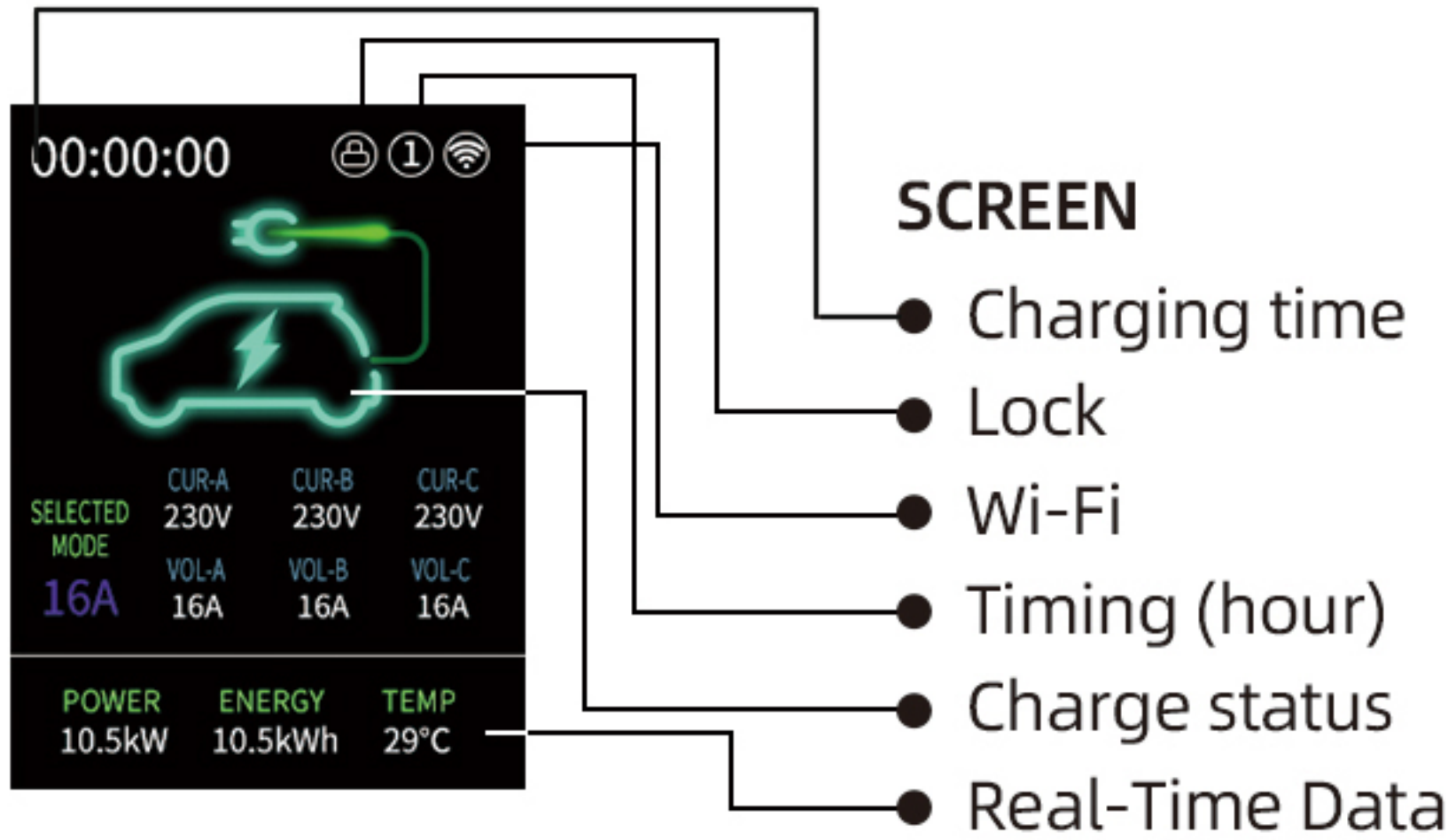
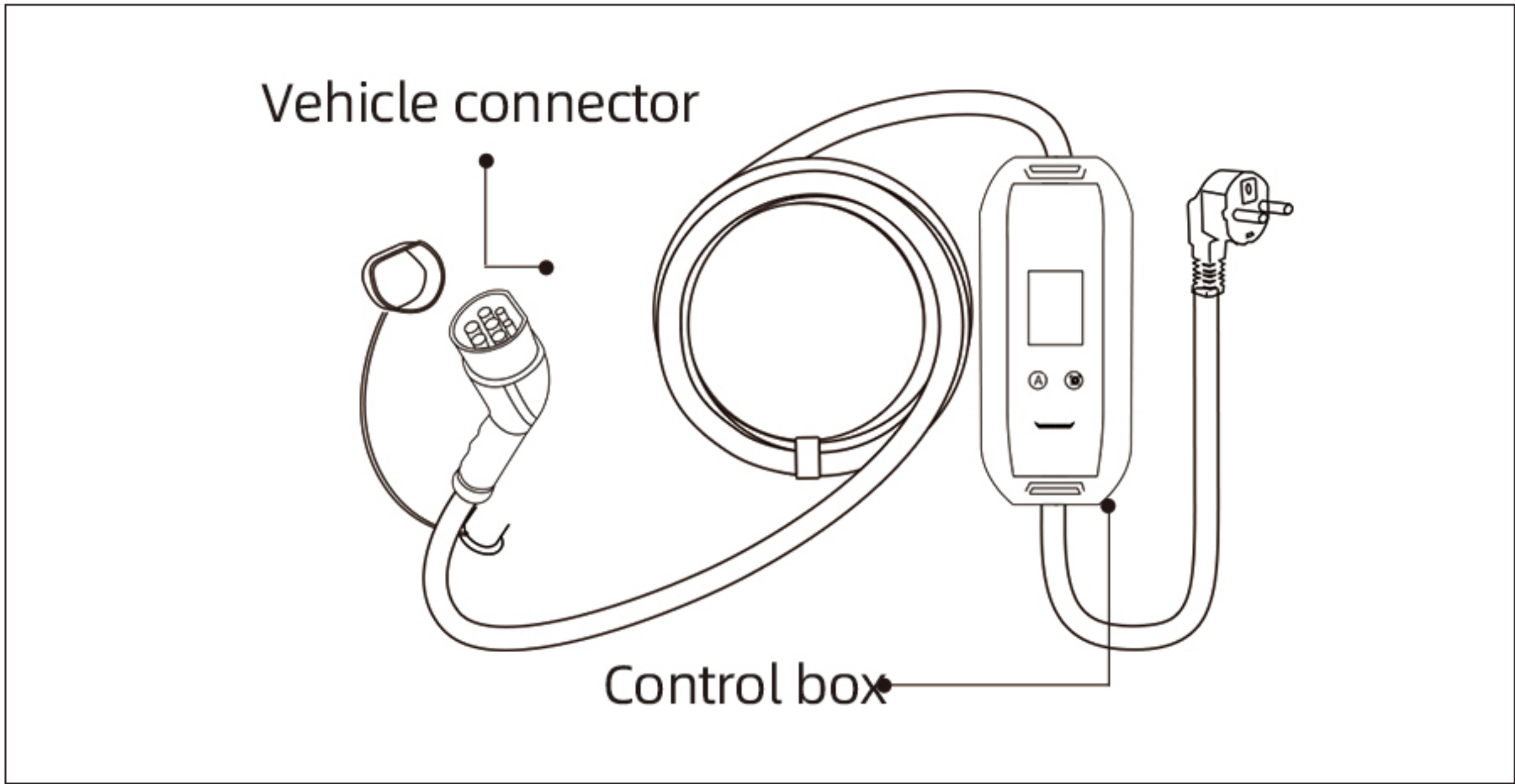
# Product Safety Information



## WARNING

- Only for EV charging.
- Only for use in the situation that the power-supply side contains an RCD breaker protector.
- Do not use the device when the cable is broken .
- Do not use the device with an extent cord.
- Do not put your fingers into the charge connector.
- The device contains no maintainable parts. Do not attempt to repair or maintain it by yourself.
- Please contact the dealer for repair or replacement when the device can not work.

# Product Description



## INDICTOR

- Blue Solid : Unconnected
- Green Solid : Connected
- Green Breathing: Charging
- Red Solid : Fault



# Technical Specification

|                    |   |                           |
|--------------------|---|---------------------------|
| Technical Features | Input Power   | 100~240VAC 50/60Hz 1Phase |
|                    | Output Current  | 8A/10A/13A/16A/22A/32A    |
|                    | Standby Power   | <1.5W                     |
|                    | Standard  | IEC 61851-1               |
|                    | Charge Interface  | Type 2 Plug               |
|                    | User Interface  | RGB LED, LCD,Touch Button |
| Physical Features  | Dimensions  | 230*100*57mm(L*W*H)       |
|                    | Weight  | ~3.6kg                    |
|                    | Enclosure IP Rating   | IP65                      |
|                    | Operating Temperature   | -25°C to +50°C            |
|                    | Humidity  | <95%RH                    |
|                    | Operating Altitude  | <2000m                    |
|                    | Cooling Method  | Natural Cooling           |
| Safety Design      | Overvoltage Protection,<br>Overcurrent Protection,<br>Leakage Protection,<br>Overtemperature Protection,<br>CP Protection,<br>Lightning protection,<br>ground protection. |                           |

## Use Precautions

1. Please make sure to follow the instructions when charging; failure to do so may void your warranty;
2. Maintain a clean and dry vehicle connector. Clean with a dry cloth and avoid contact with the connector core when powered;
3. Do not use the charging pile if the vehicle connector or cable is damaged. Report any defects immediately;
4. Refrain from disassembling or modifying the charging pile. Contact staff for repairs or modifications to prevent damage or hazards;
5. In case of abnormality, immediately press the emergency stop button to cut off all power;
6. Exercise caution when charging in rain or thunderstorms;
7. Keep children away from the charging pile during operation to prevent injury;
8. Only charge when the vehicle is stationary and turned off, especially for hybrid electric cars;

## Use Precautions

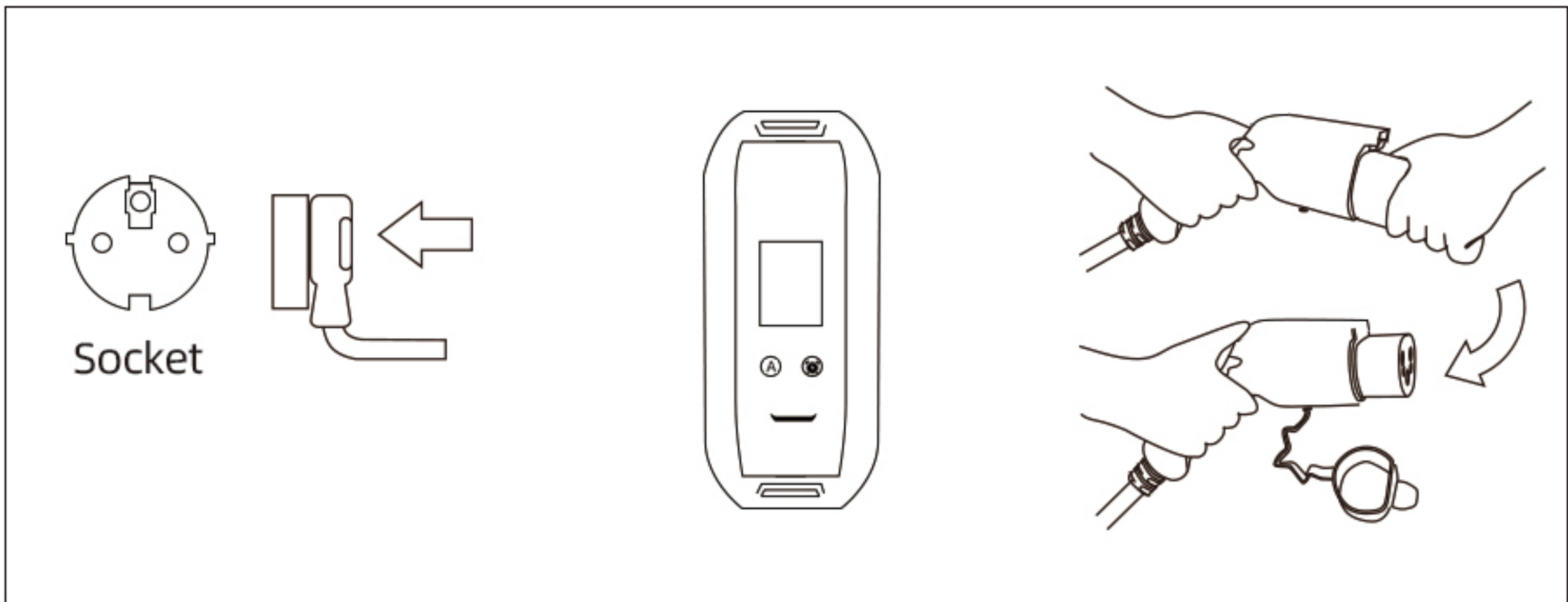
9. The charging current is not adjustable during the process. To reset, unplug and replug the charger. Disable Auto-Start for scheduled charging;

10. The vehicle connector's maximum current is 32A. Installation of a 40A breaker by a professional electrician is required.





# Charging Operations



Step 1

Step 2

Step 3

1. Insert the plug into the power-supply socket firmly(Step 1).

⚡ Ensure the cable is in compliance with national standards.

2. Press the button [A] to switch the charging current mode.

Press the button [CLOCK] to set the charging time (Step 2).

3. Pull the cap of the charging gun lightly and completely, then insert the vehicle connector's head into your vehicle's outlet (Step 3).

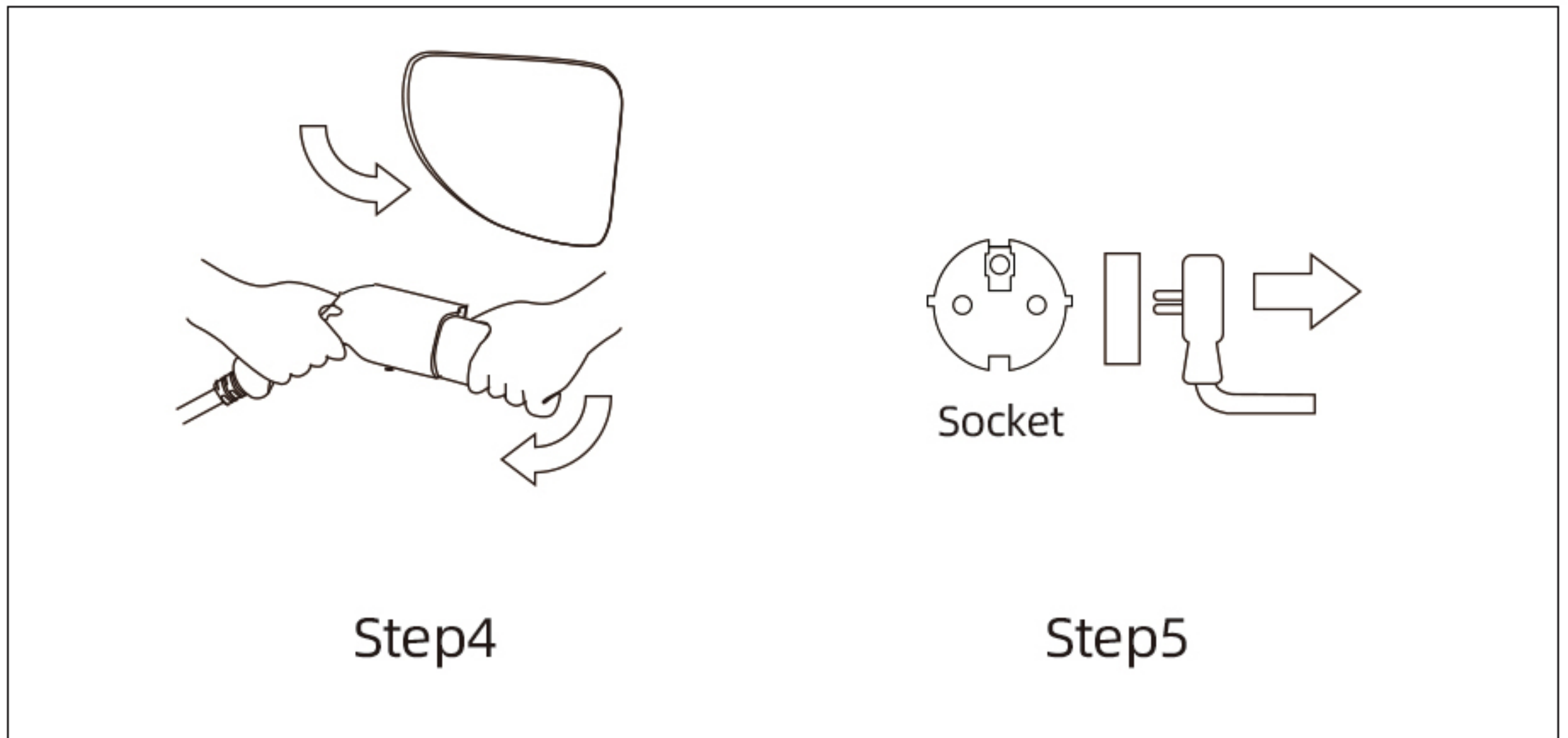
Ensure the vehicle connector's head is fully inserted until it's locked.

4. The device starts charging automatically.

⚠ If "Auto-Start" is on (no small lock icon in the top right corner of the screen), charging starts automatically when the gun is inserted;

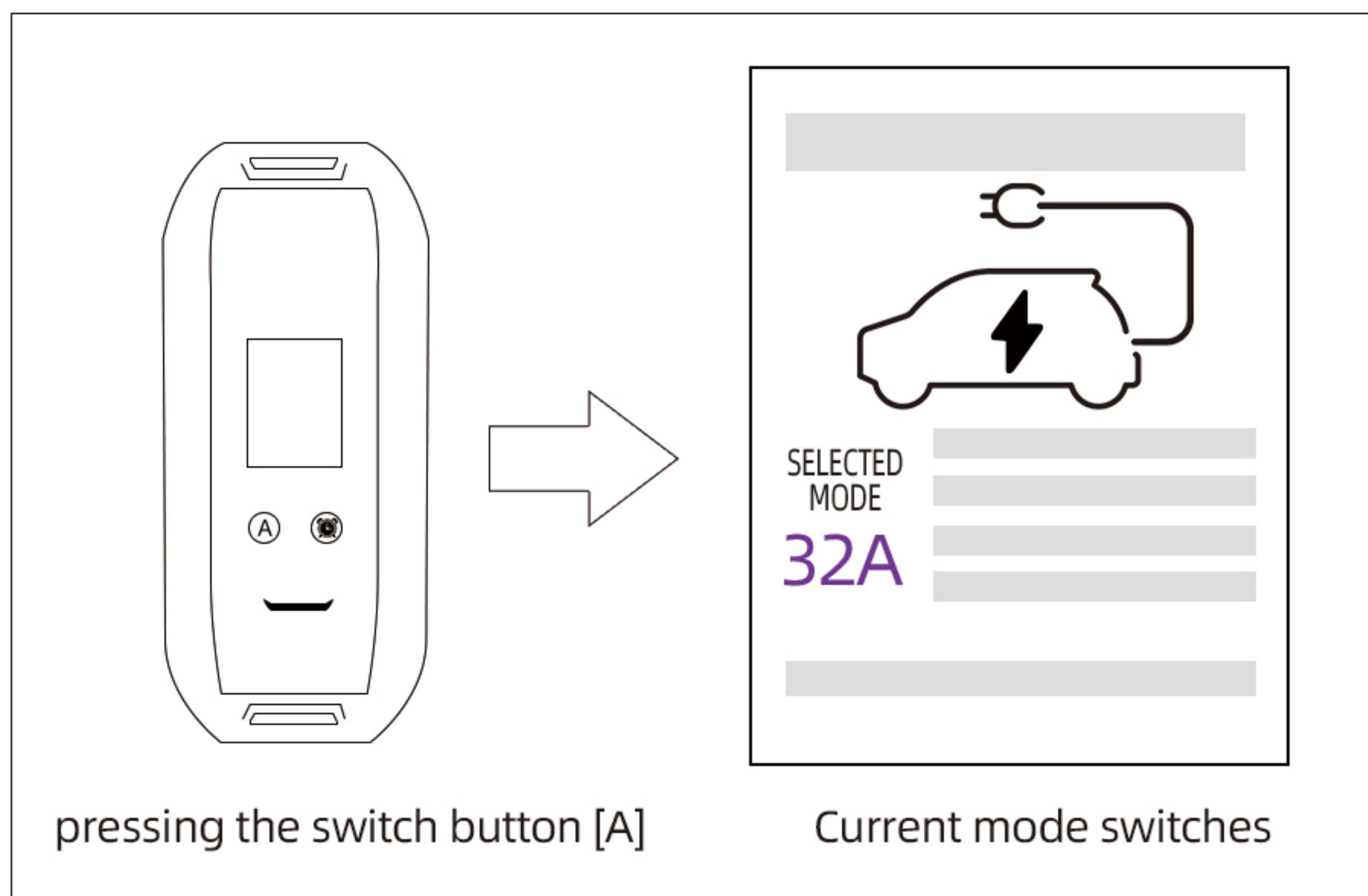
⚠ If "Auto-Start" is switched off (there is a small lock icon in the top right corner of the screen), the phone needs to be connected to Wi-Fi for authorization to start charging.

# Charging Operations



1. Disconnect the charger from vehicle.
2. Close the protective cap of EV and put on the protective cap of charging connector(Step 4).
3. Disconnect the plug from the power-supply socket (Step 5).
4. Put the charging cable into the bag.

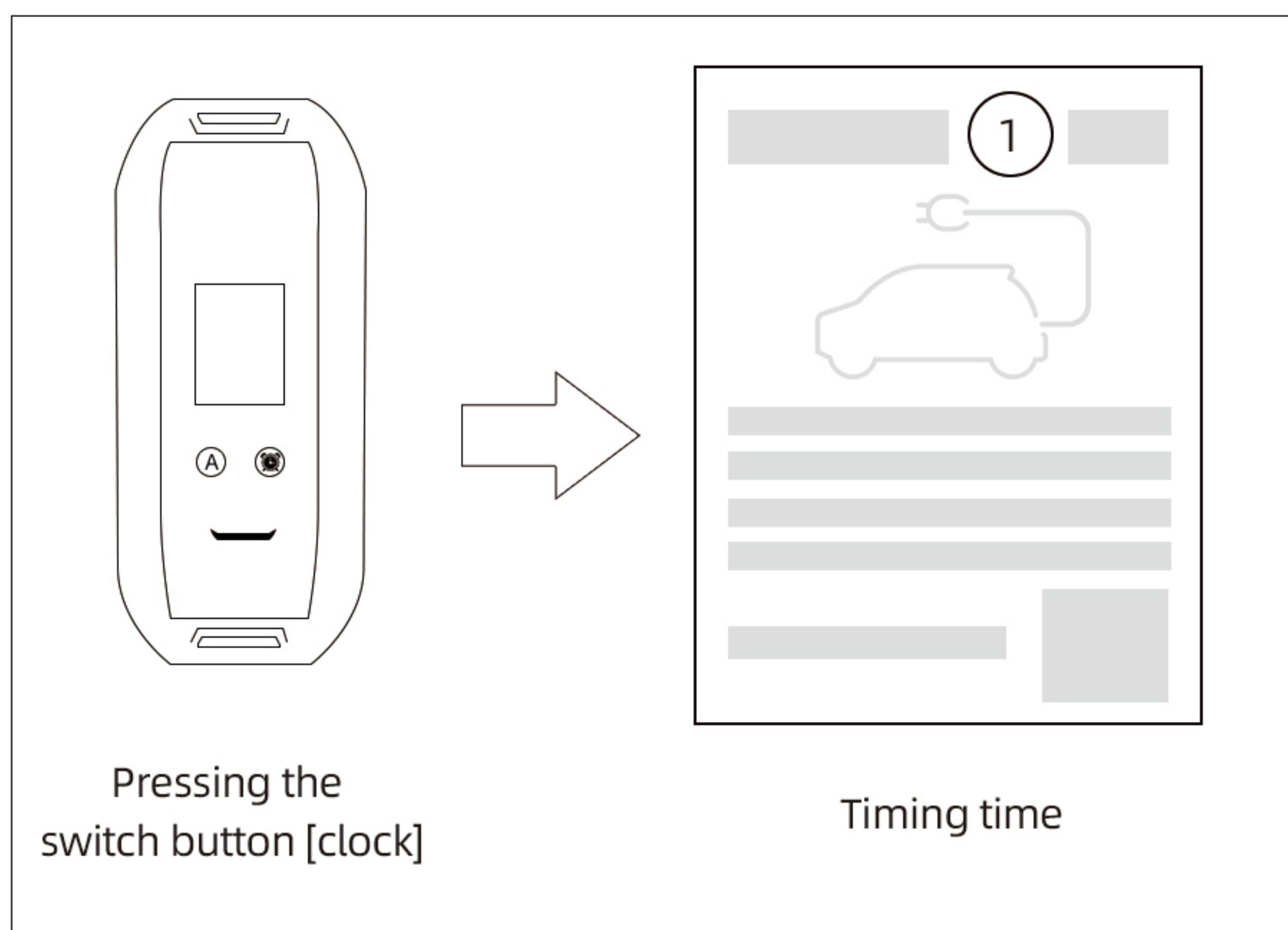
# Charging Operations



1. Please insert the power-supply plug into the power-supply socket firmly and disconnect the vehicle, then current mode can be switched by pressing the switch button [A].
2. The device supports 6 current modes of 8A/10A/13A/16A/22A/32A (Current switching numerical change in real-time.)



# Charging Operations

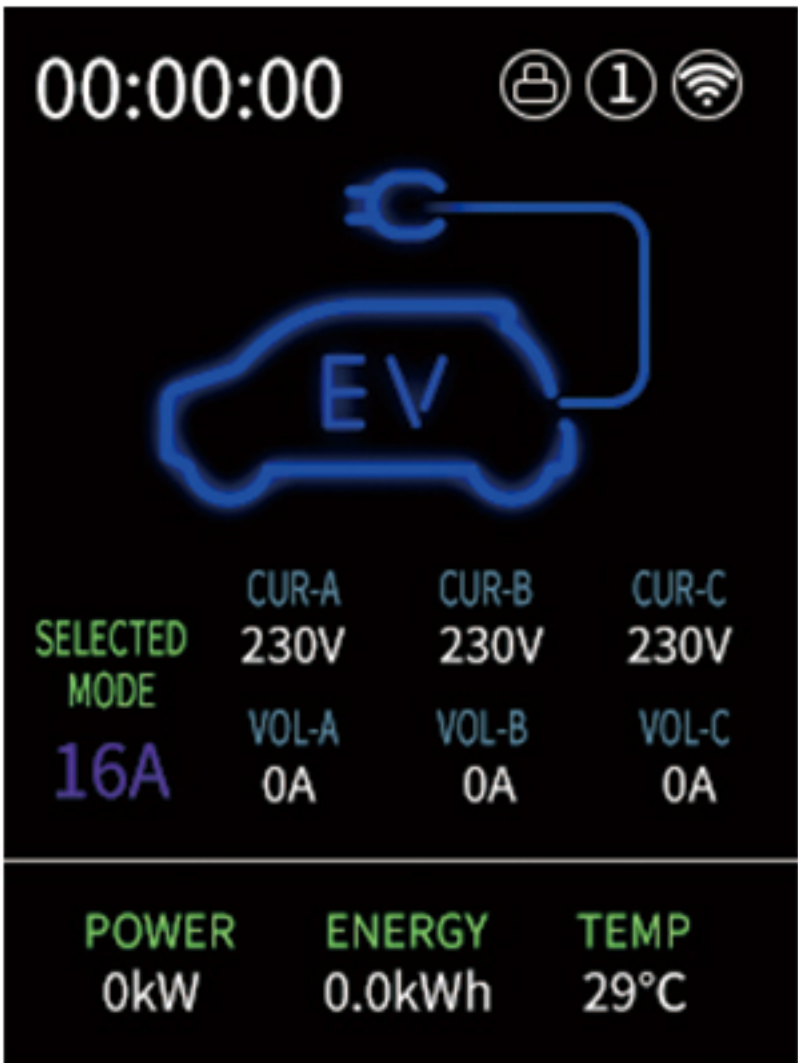


1. Please insert the power-supply plug into the power-supply socket firmly and disconnect the vehicle, then the timing charging can be set by pressing the switch button [clock];
2. The timing time increases by 1 hour when you press the button once.

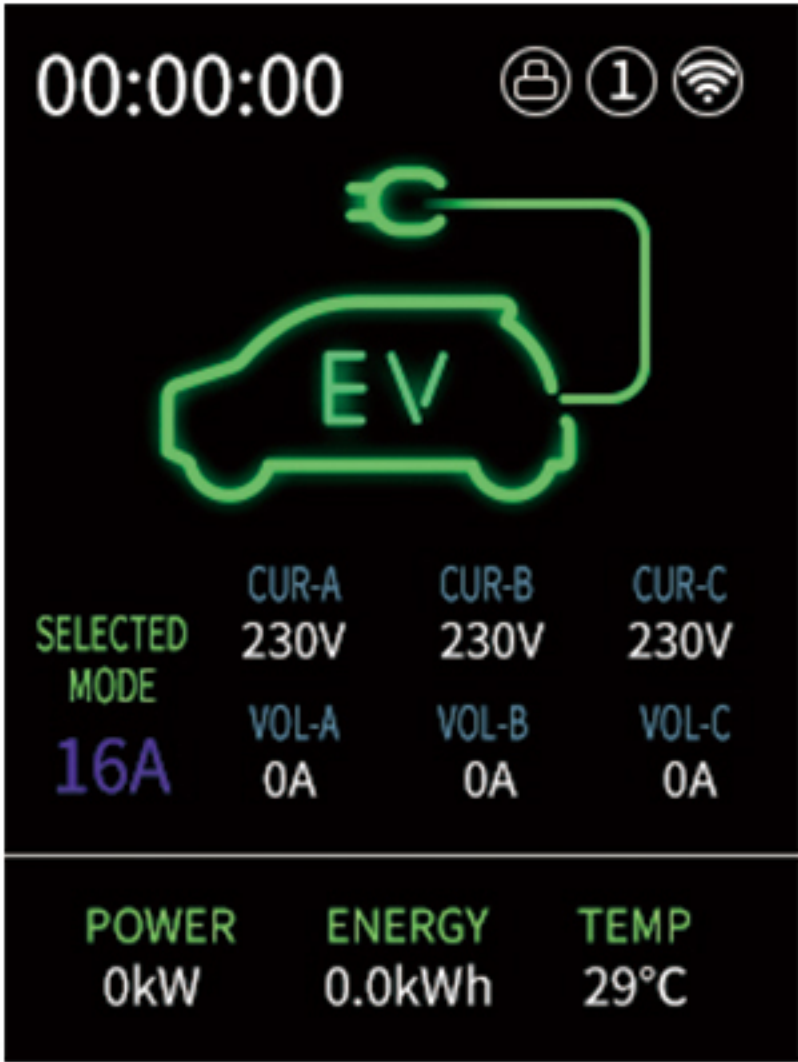
# Charging Operations



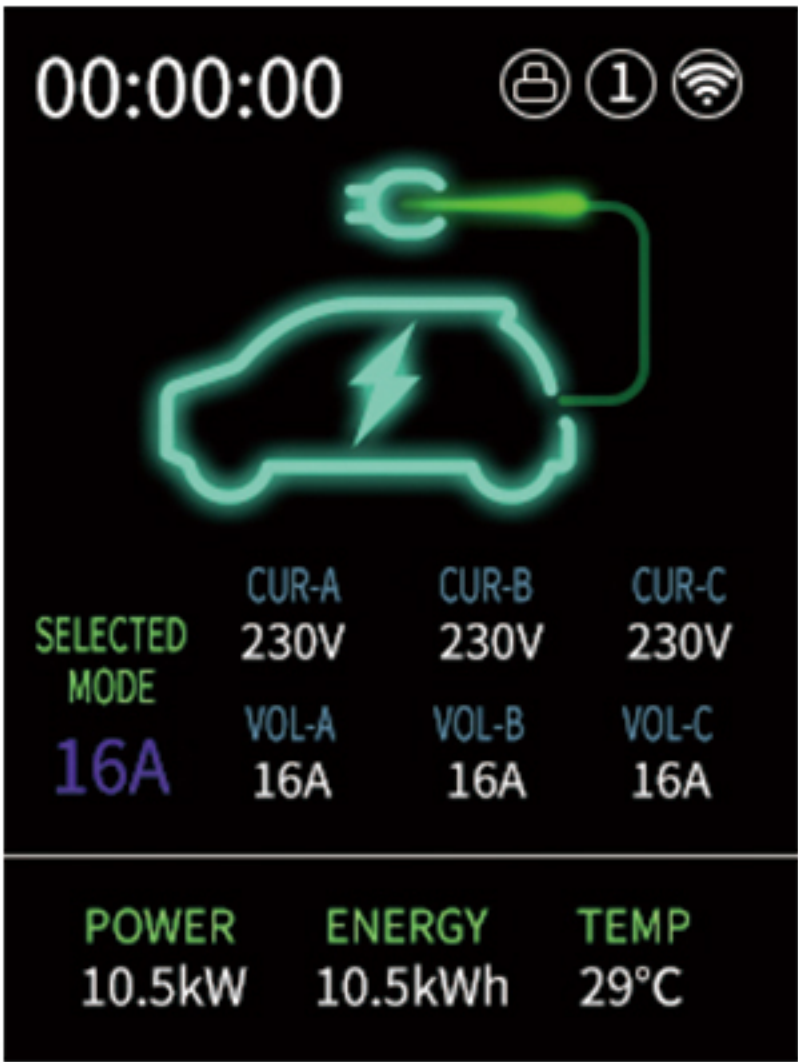
Loading



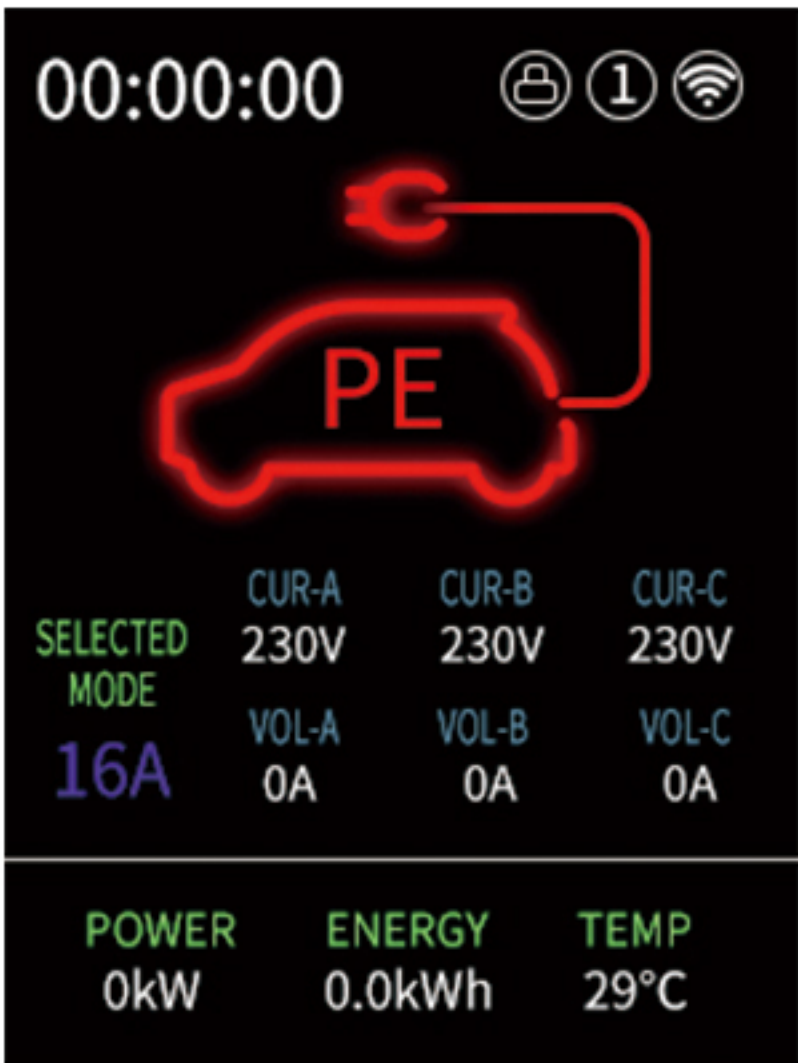
Unconnected



Connected



Charging



Fault



## Wi-Fi function

1. Connect to Wi-Fi, turn on the Wi-Fi of the mobile phone, search, and connect to the Wi-Fi name beginning with E-Penguin, the initial password is: 12345678 (note: the mobile phone cannot access the Internet after connecting to Wi-Fi)

⚠ If your phone prompts you that this network is not available, whether to use it or whether to switch, please choose to continue using it or not to allow switching.

2. Open the mobile browser (it is recommended to use the default browser of the mobile phone), enter the IP address in the browser URL bar: 192.168.4.1, or use the browser to scan the code to open the web page:

Tip: You can save this website as a bookmark, and next time you use it, open the browser after connecting to the charger Wi-Fi and click on the bookmark to open the web page;

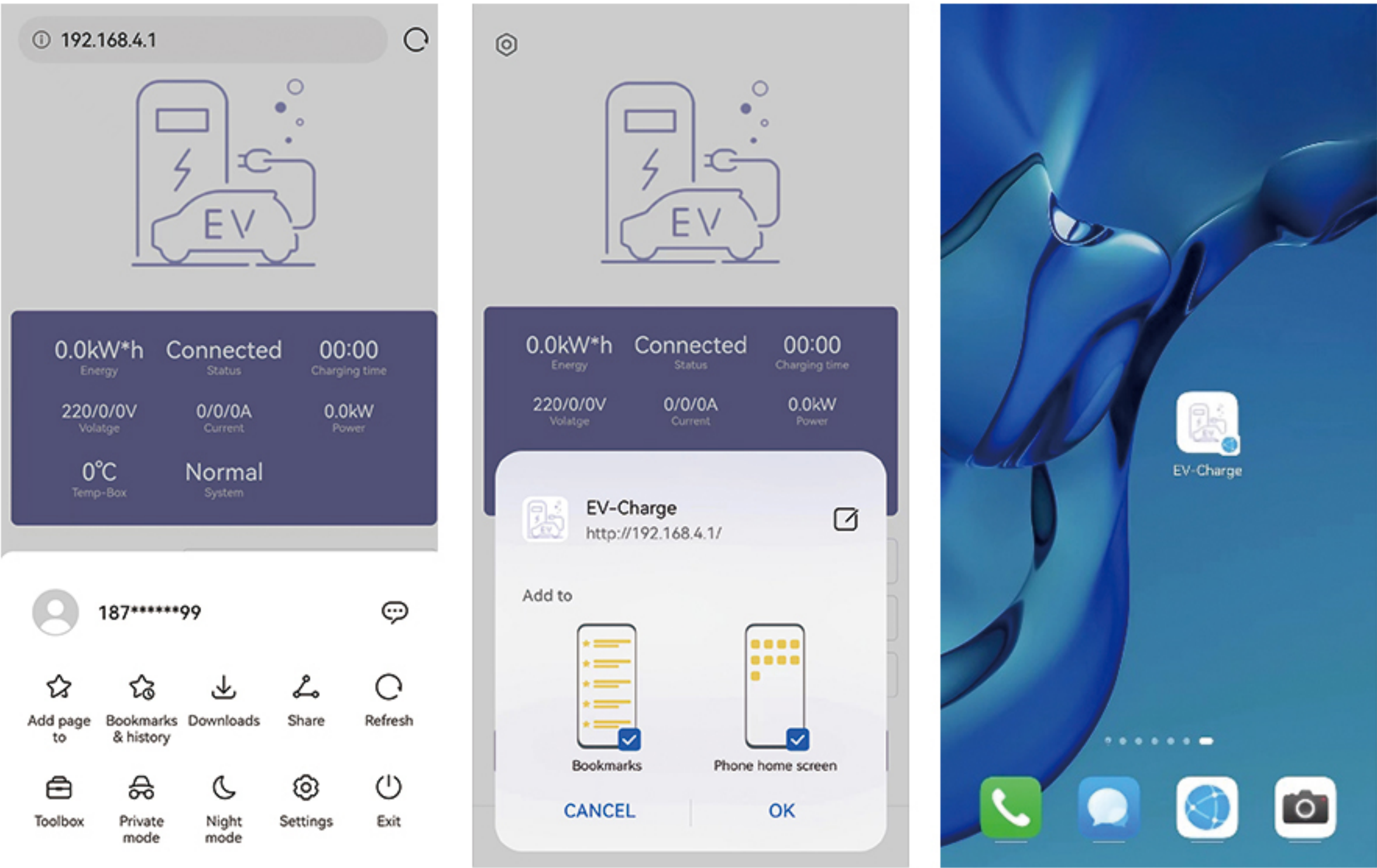
Some browsers also support adding bookmarks to the desktop. After connecting to the Charger Wi-Fi, we can simply click on the icon on the desktop to open the web page, just as convenient as using an APP.



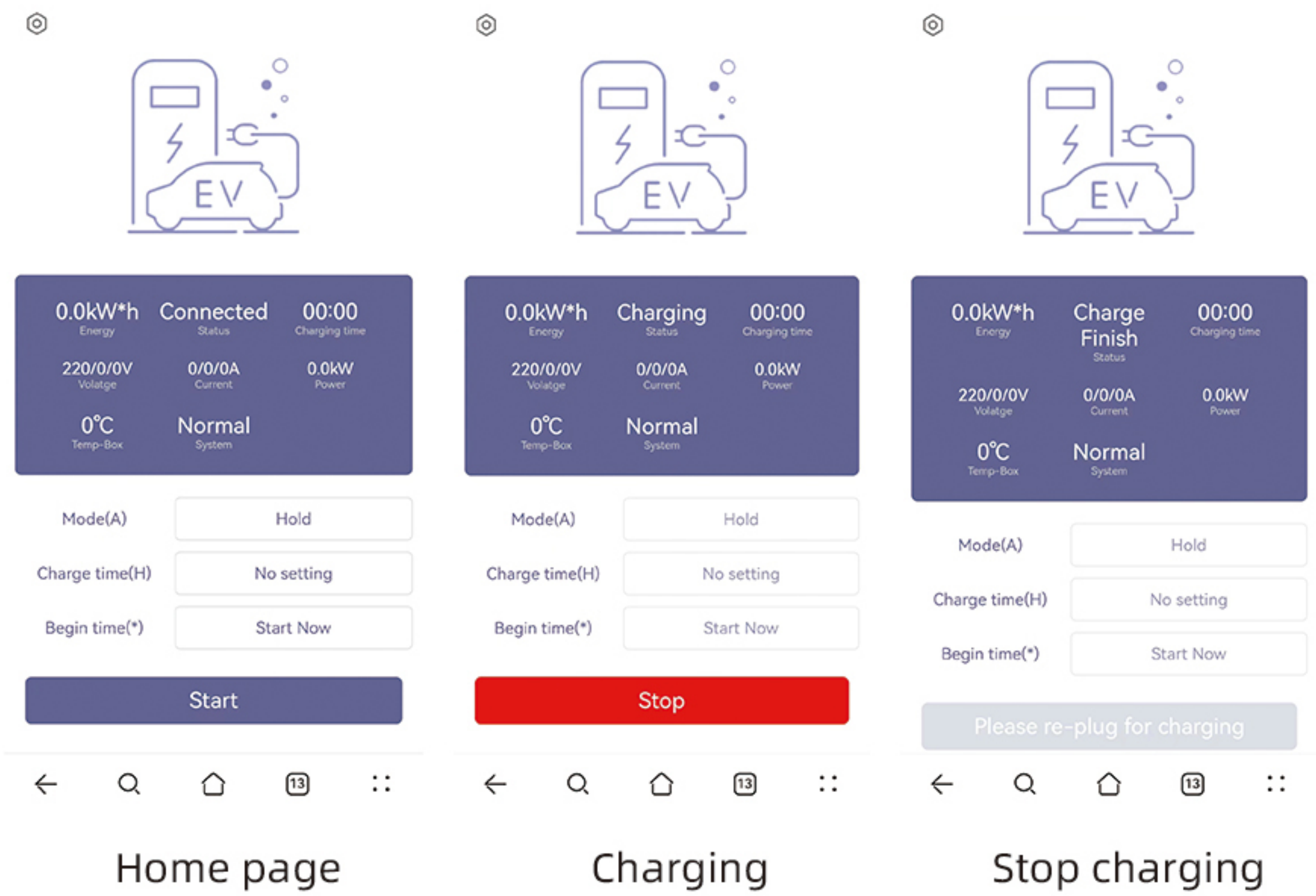
scan the code to  
open the web page



# Wi-Fi function



## 3.Using the handset to initiate charging





## Wi-Fi function

Once the charger has been inserted into the vehicle's charging port, charging can be started by clicking on "Start" on the mobile phone's web page;


**Before charging, if required the following settings can be made :**


- **Mode:**Setting the level of charging current, the higher the current, the higher the output power provided by the charger;
- **Charge time:**It will automatically stop charging when the charge duration reaches a set value;
- **Begin time:**It is the time at which charging will begin. By setting this parameter, an schedule charging is made to start charging at a certain point in time; when Countdown appears, the schedule charging is set successfully;

**Set the parameters and click Start to charge.**

To start or stop charging the charger using the phone, you need to turn off "Auto-Start" in the settings;

To use the schedule charging charging function, you need to turn off "Auto-Start " and "Conn-Start" in the settings;

 Some car models may not support the schedule charging function, if the schedule charging does not work, please set the Begin time to Start Now.

 The schedule charging setting is valid for a single time and the device will record the set time. If the next time you start charging at the same time, just need to open the web page and click on Start;

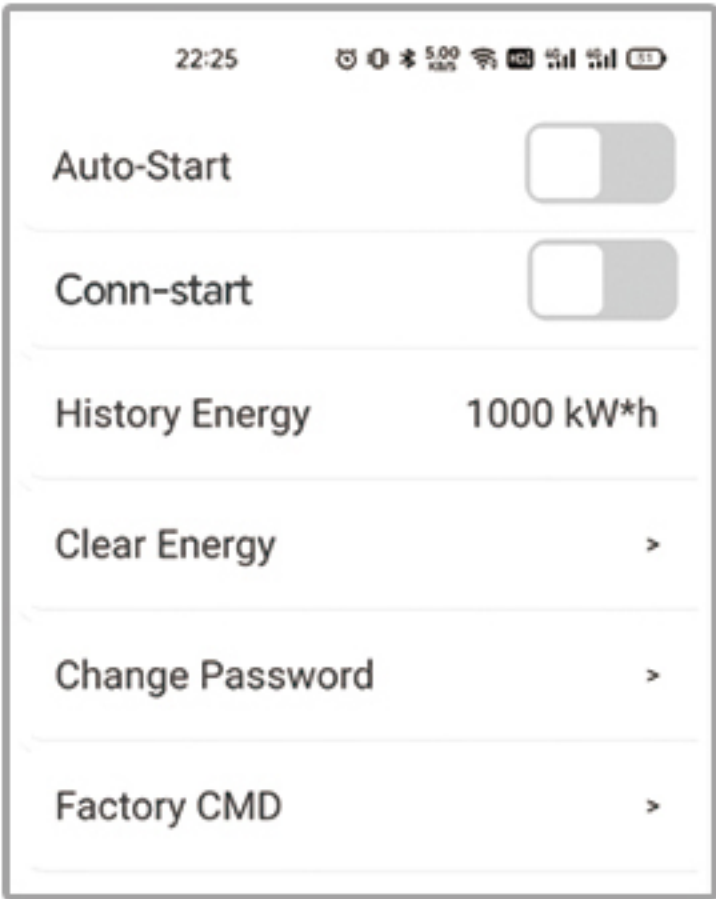


# Wi-Fi function

## 4. Settings

The settings screen can be accessed by clicking on the settings icon in the top left corner of the home page, with the following main options:

- (1) Auto-Start: When this function is switched on, charging starts automatically when the gun is inserted;



When this feature is switched off, a mobile phone connection to the charger's Wi-Fi is required for authorization before charging can be activated, which prevents others from stealing the charger;

- (2) Conn-Start: When switched on, the plug gun can automatically start charging when the phone is connected to the charger's Wi-Fi;

**! Note:** To use the sensor-less start-charge function, you need to turn off "Auto-Start" .

### (3) History Energy

Historical charge total; if cleared, accumulated since last cleared;

### (4) Clear Energy

Clear accumulated power

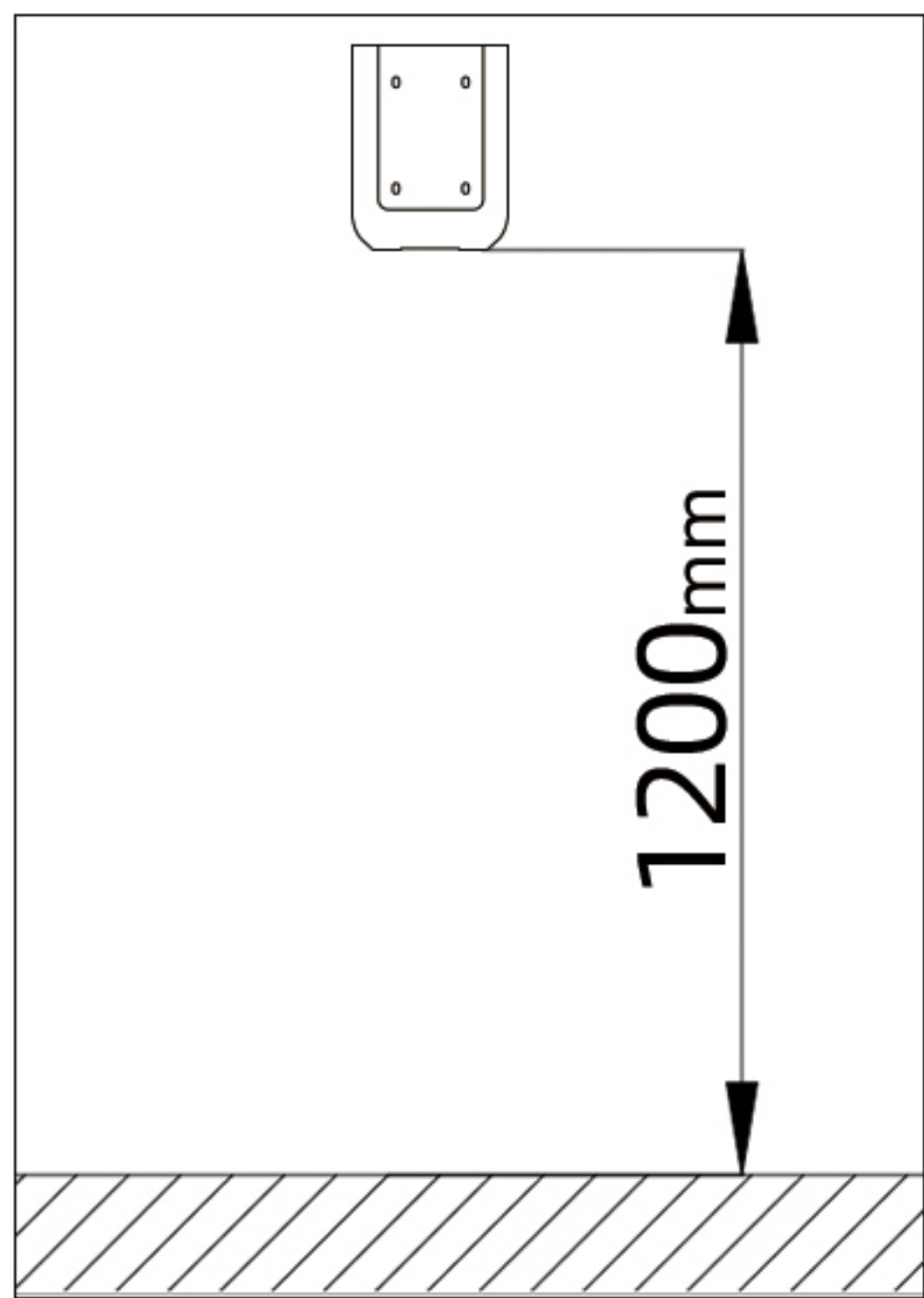
### (5) Change Password

Change the password of the Wi-Fi hotspot; to prevent others from connecting to the charger, it is recommended that the password be changed after the first connection;

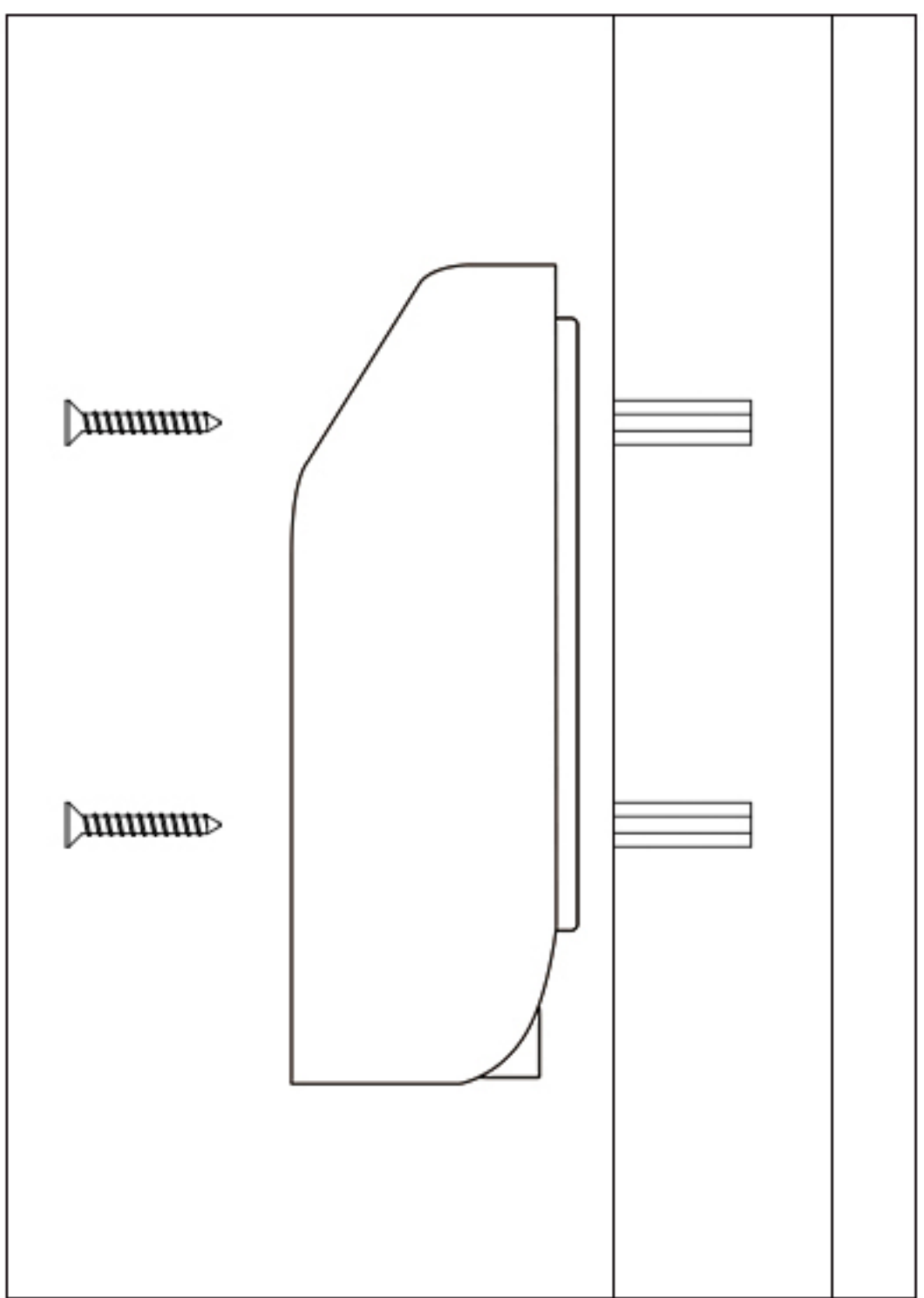


# Installation Method

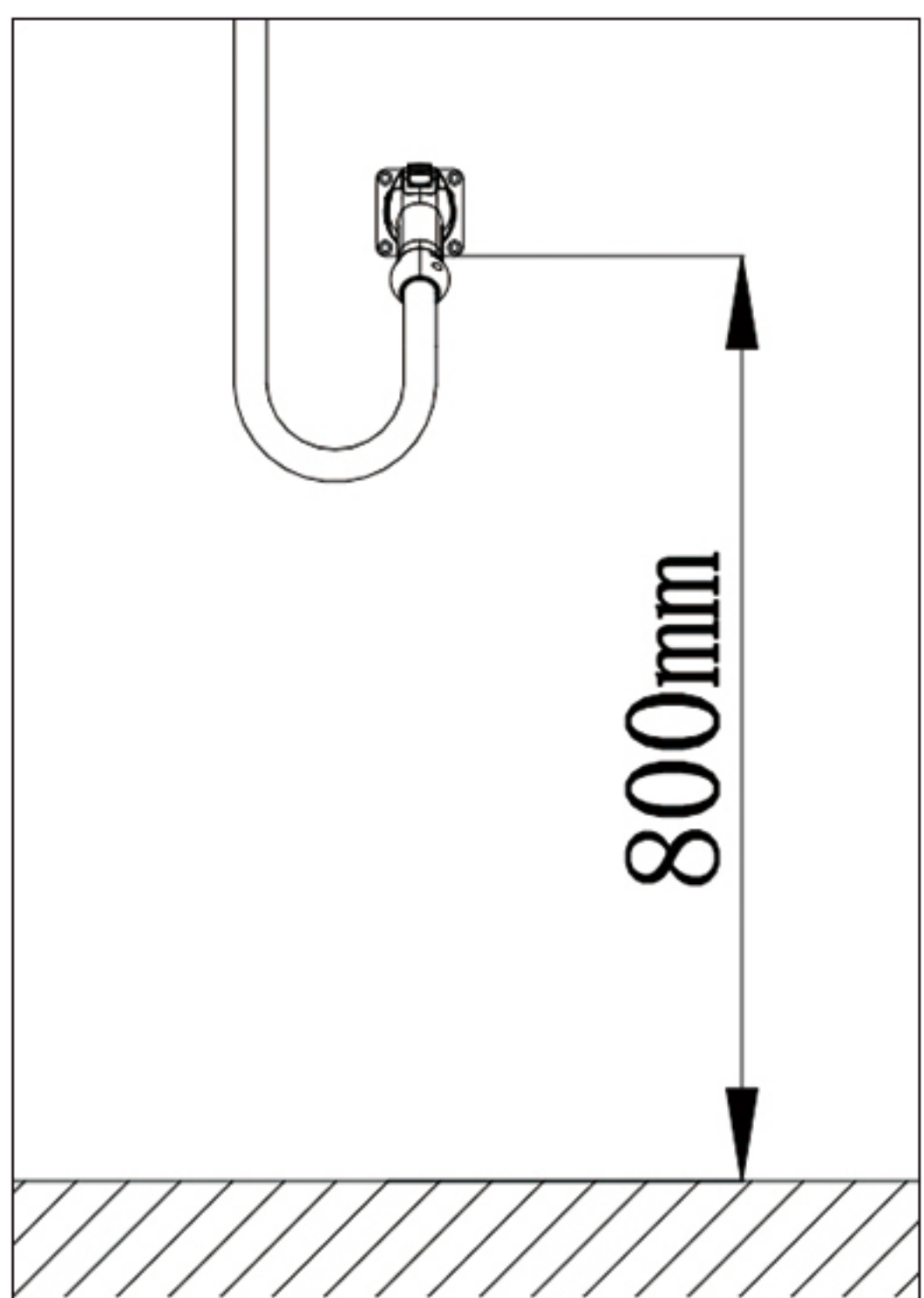
1. Locate and drill holes on a



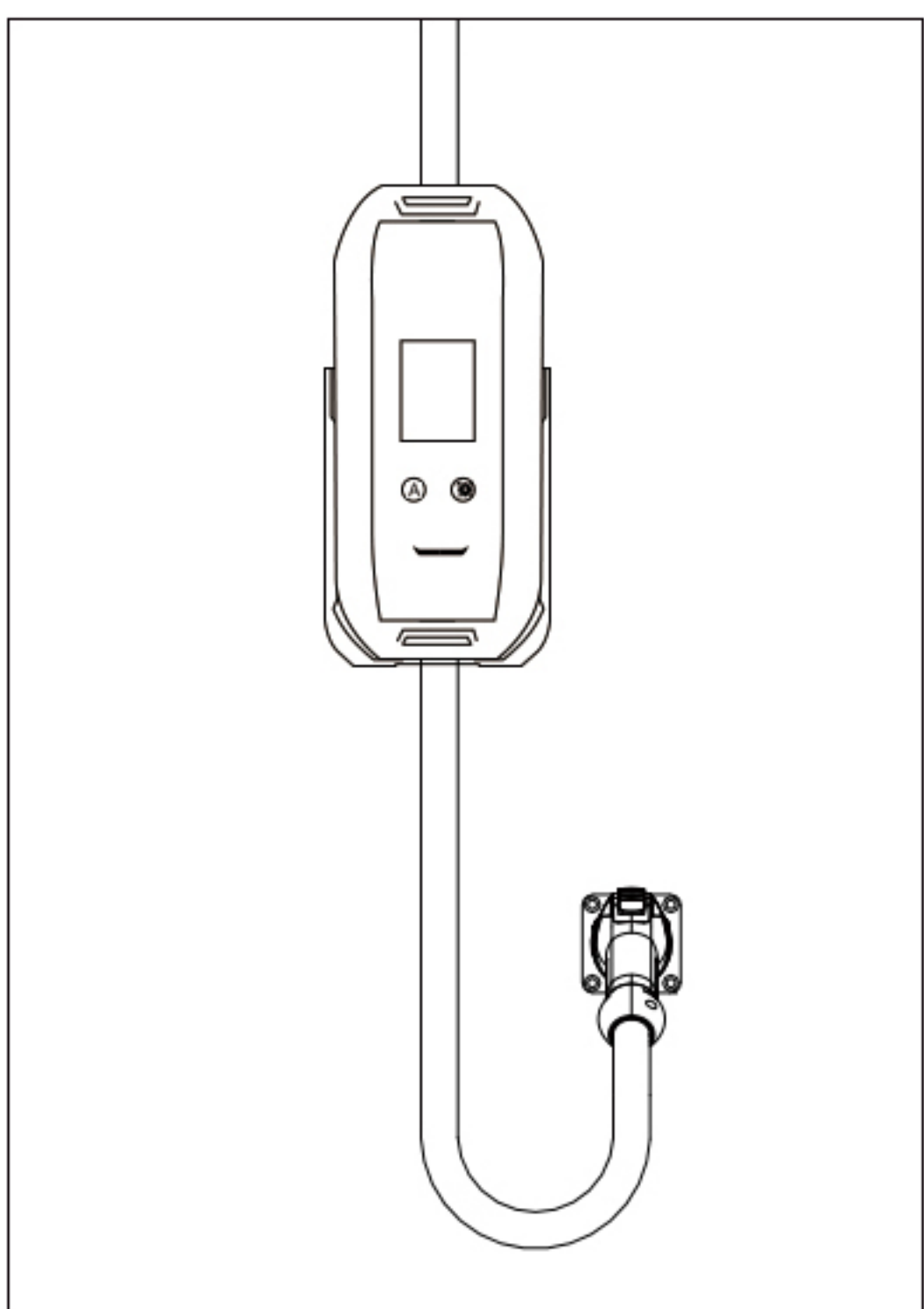
2. Install the back plate



3. Install the charger



4. Design sketch



# Warranty Conditions

This portable EV CHARGING is warranted to be free of maintenance for products that can not charge properly due to self-quality for a period of one year from the date of shipment.

Our company offers free maintenance service to those products that can not charge properly due to self-quality from the date of shipment within one year.

This warranty does not cover any damage due to the following cases:

1. Improper handling, installation, use and maintenance by users
2. The break down and the failure caused by the force majeure, such as direct damage and inability to function properly caused by natural disasters.
3. Products drop from a high height or are soaked in water.

This warranty does not include the cost of freight to return the device to our company.

This warranty is only valid to the original purchaser of the device and is not transferable.

# Fault Code Reference

| Fault Name | Cause of failure  |
|------------|---|
| OV         | The input voltage is too high, and it is detected that the AC input voltage exceeds 270±5VAC      |
| UV         | The input voltage is too low, and the AC input voltage is detected to be lower than 90±5VAC       |
| OC         | Over-current, it detects that the charging current is too large and lasts for more than 5 seconds |
| OT         | Over-temperature, the internal temperature of the charger exceeds 85°C                            |
| LEAK       | Power leakage, detected leakage current exceeding 30mA AC   |
| PE         | The PE connection is faulty   |
| CP         | The communication between the charger and the vehicle is abnormal                                 |





Charge for Today, Change for Future

