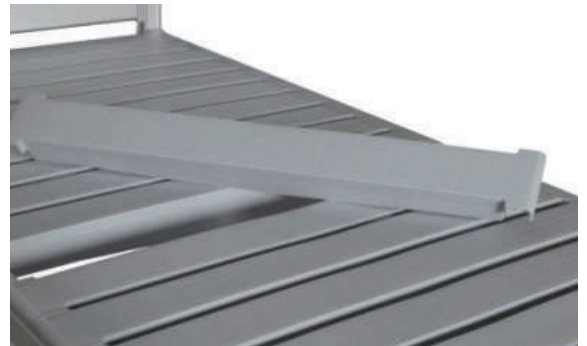


STORAGE & HANDLING SOLUTIONS for COMMERCIAL & INDUSTRIAL



Defined Space
Commercial Furniture and Interiors

Our Story

Young in years but old in experience.

With more than a decade supplying furniture and interiors, it's fair to say, we've experienced a lot!

Whether it's a small single office or a full refurbishment for a large multi-national, we really have seen everything.

Partnering with leading UK based manufacturers allows us to offer a wide selection of furniture to create a customised solution that meets your unique needs and budget.

Our Philosophy

People-first design

At Defined Space, we believe that everyone deserves to work in an inviting, comfortable environment that encourages collaboration and engagement.

We believe the best workspace design is built around people.

It's all about you!

Our Approach

We follow our 3D approach
Design, Detail, Deliver

By listening and understanding your individual needs, our expert designers can help you create a cohesive look that reflects your company's personality and culture.

Every step of the way will be clearly explained as your dedicated project manager works through every detail with you

Adopting innovative products and practices allows us to deliver workspaces that contribute to improved productivity and promote health and mental wellbeing.

Defined Space Limited
22-24 Harborough Rd, Kingsthorpe, Northampton NN2 7AZ

01604 385320
customersupport@definedspace.co.uk

CONTENTS

Eclipse Chrome Wire..... 4-13

Standard Units..... 4-5

Accessories & Special Shelves..... 6-11

ESD Safe..... 12-13

Eclipse Perma Plus Epoxy Coated..... 14-15

Eclipse Plastic Plus..... 16-17

Eko Fit Polymer..... 18-19

Stainless Steel Shelving..... 20-23

Eclipse Wire..... 20-21

Solid & Vented..... 21-23

High Density Storage..... 24-25

Small Part Storage..... 26 -27

Trolleys..... 28-33

General Purpose Trolleys..... 29

Chrome Wire Trolleys (inc. ESD safe)..... 30

Linen/Laundry Carts & Security Cages..... 31

Order Picking Trolleys..... 32-33

Euro Box Storage..... 34-35

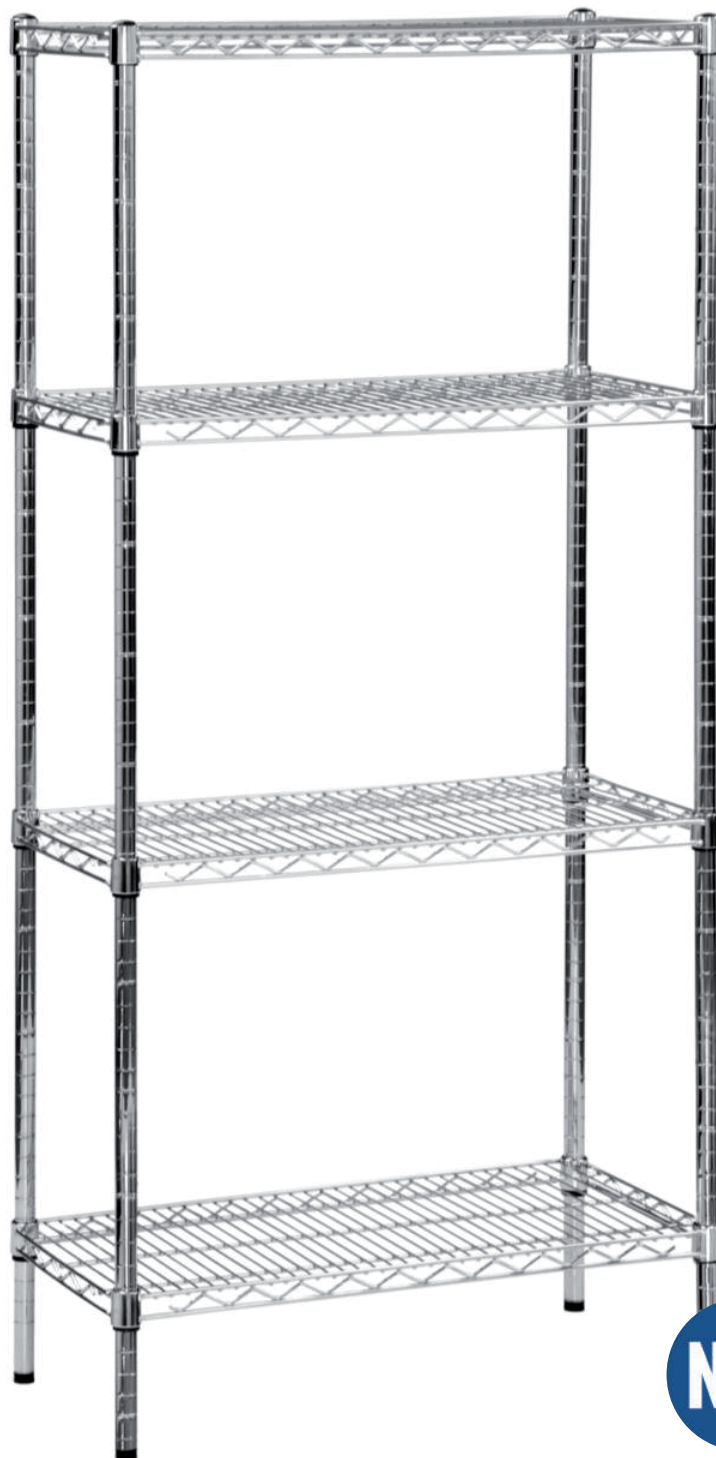
Lockers..... 36-37

Hazardous & COSHH Cupboards..... 38



ECLIPSE CHROME WIRE

OPEN WIRE SHELVING SYSTEM



ECLIPSE CHROME WIRE

ECLIPSE CHROME WIRE



HARD WEARING CHROME FINISH WITH UP TO 300KG* SHELF LOAD.

- Ideal for dry store, catering, retail display, medical authorities, hospitals, electronic, engineering and office
- Quick and easy to assemble
- Innovative design – reduce costs and improve access by using add -on units
- Fully adjustable – shelf heights every 25mm
- Available in 87 size combinations
- Huge range of accessories including angled shelves, display baskets and utility rails
- Options 1625mm, 1820mm and 2130mm height

*Note: Load capacity based on static units. Load capacities may vary according to design. Please contact us for accurate load bearings for your desired design.

DEPTH (mm)	LENGTH (mm)								
	460	610	760	915	1070	1220	1370	1520	1820
305		•	•	•	•	•			
355			•	•	•	•	•	•	•
460	•	•	•	•	•	•	•	•	•
610		•	•	•	•	•	•	•	•



Upgrade
Available



Quick and easy to assemble bolt - free, no specialist tools required.

Fully adjustable - shelf heights every 25mm.

Add swivel castors for mobility. Available in 75mm, 100mm and 120mm sizes. Unbraked and braked options.



making better use of space



Upgrade
Available

ECLIPSE CHROME ACCESSORIES

ECLIPSE CHROME WIRE SPECIAL SHELVES AND ACCESSORIES

Eclipse chrome wire units can be adapted and modified to suit your needs as required. Special shelves such as sloping (27 degree and 45 degree), basket, lipped and reel shelves, as well as accessories such as garment rails, shelf dividers and utility rails can be added onto units or can replace existing shelves to make your shelving more versatile.



Please see the following pages and explore the different accessories that can be added to the Eclipse Chrome units.

making better use of space

ECLIPSE CHROME ACCESSORIES

GARMENT RAILS UNITS

- Available in 915, 1220 and 1520mm lengths
- Suitable for retail, office, schools, theatre or wholesale storage



ECLIPSE CHROME WIRE SLOPED SHELF

- Available in 3 different sizes and 2 different angles
- Ideal in the retail environment for creating a more user-friendly display

DEPTH (mm)	LENGTH (mm)					
	27 Degree			45 Degree		
	610	915	1220	610	915	1220
305	•					
460		•	•		•	•



making better use of space

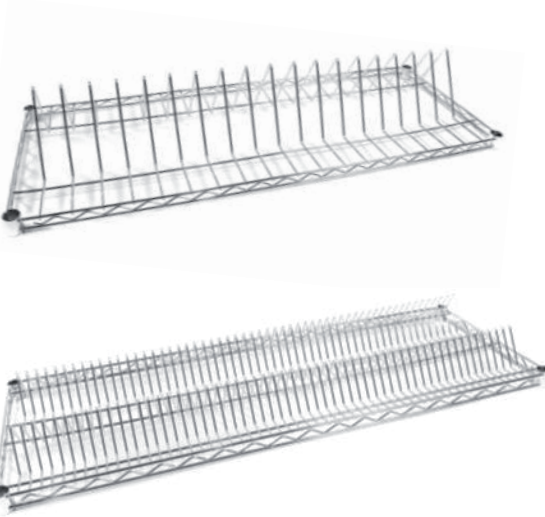


Upgrade
Available

ECLIPSE SPECIAL SHELVES

ECLIPSE CHROME WIRE REEL SHELF

- Shelf size: 460 x 1220mm
- Single: 18 reels
- Double: 112 reels



CORNER SHELVES

- Available in the following sizes:

DEPTH (mm)	LENGTH (mm)	
	460	610
460	•	
610		•



ECLIPSE CHROME BASKET SHELF

- 90mm high
- Available in 2 different sizes

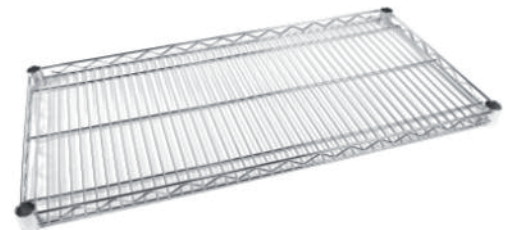
DEPTH (mm)	LENGTH (mm)	
	610	915
460	•	•



LIPPED SHELVES

- 25mm lipped edge
- Ideal for storing/displaying small or loose products

DEPTH (mm)	LENGTH (mm)	
	915	1220
460	•	•



making better use of space

ECLIPSE SPECIAL SHELVES

HEAVY DUTY SHELVES



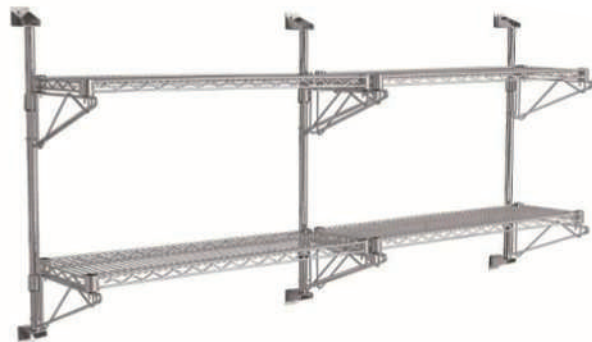
Upgrade
Available

- Ideal for storing heavier items.
- Up to 540kg loading per shelf UDL.
- Can be added to existing units with Eclipse chrome shelves.

DEPTH (mm)	LENGTH (mm)	
	915	1220
460	•	•
610	•	•

WALL SHELVING

- Create extra storage space with ECLIPSE cantilever wall shelving.
- Fully adjustable and strong.
- Includes 2 x 610mm wall posts and fixing brackets, shelf/shelves and 2 support arms for each shelf.
- Shelf spans in excess of 1200mm available using double supports.
- 1 or 2 tier option.



DEPTH (mm)	LENGTH (mm)		
	760	915	1220
305	•	•	•
355	•	•	•
460	•	•	•

ECLIPSE ACCESSORIES

SHELF COLLARS



CONDUCTIVE COLLARS



ADD ON CLIPS



POST CLAMPS



DISPLAY HOOKS



BASE PLATES



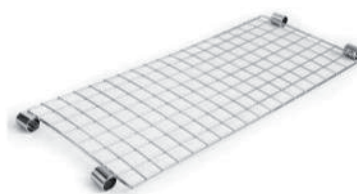
TICKET EDGING



BACK GRIDS

- Available in the following sizes:

DEPTH (mm)	LENGTH (mm)	
	915	1220
350	•	•



making better use of space

ECLIPSE ACCESSORIES

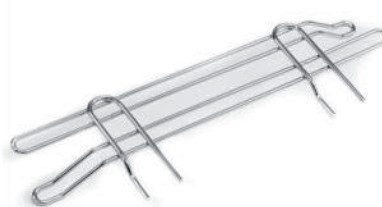
SHELF DIVIDERS

- 170mm high
- Choice of 305, 355, 460 and 610mm depths



SHELF LEDGES

- 115mm high
- Choice of 305, 355, 460, 610, 760, 915, 1070, 1220, 1370, 1520 and 1820mm widths



EURO BOX RUNNERS (PAIR)

- 610mm deep



UTILITY RAILS

- 25mm high
- Choice of 460, 610, 760, 915, 1070, 1220, 1370, 1520 and 1820mm widths



SHORT CART HANDLES

- Choice of 460 or 610mm widths



LONG CART HANDLES

- Choice of 460 or 610mm widths



making better use of space

ESD SAFE SHELVING



ESD SAFE SHELVING

ESD SAFE SHELVING

ESD SAFE CHROME WIRE SHELVING

Our ESD safe chrome wire shelving is available in the full range of sizes and accessories including trolleys.



If storing electrical devices on metal shelving or trolleys, then it is important to ensure it is ESD (Electro Static Discharge) safe. Intense heat from ESD can melt or vaporize the small parts in the device, causing it to stop working or shorten it's life.

To make our Eclipse Chrome wire shelving or trolley ESD safe, all that is needed are conductive collars with metal base plates, conductive feet or anti-static castors.



making better use of space

ESD SAFE SHELVING

ECLIPSE PERMA PLUS

EPOXY COATED WIRE SHELVING WITH
AN ANTIBACTERIAL EDGE



ECLIPSE PERMA PLUS

ECLIPSE PERMA PLUS EPOXY COATED SHELVING



10 YEAR ANTIBACTERIAL & ANTI-CORROSION GUARANTEE

- Ideal for harsher environments such as freezers and cold rooms
- Quick and easy to assemble
- Coated shelves and posts for complete protection
- Up to 300kg* shelf load capacity UDL
- Fully adjustable - shelf heights every 25mm
- Innovative design - reduce costs and improve access by using add-on units
- Available in 81 size combinations
- 1625mm 1820mm and 2130mm height options

*Note: Load capacity based on static units. Load capacities may vary according to design. Please contact us for accurate load bearings for your desired design.

LENGTH (mm)

DEPTH (mm)	460	610	760	915	1070	1220	1370	1520	1820
305			•	•	•	•			
355			•	•	•	•	•	•	•
460		•	•	•	•	•	•	•	•
610		•	•	•	•	•	•	•	•



10 years antimicrobial and anti-corrosion guarantee

99.9% effective against most common bacterial strains

Add swivel castors for mobility. Available in 75mm, 100mm and 120mm sizes. Unbraked and braked options.



making better use of space

ECLIPSE PLASTIC PLUS

THE STRENGTH OF STEEL WITH
THE BENEFITS OF PLASTIC



ECLIPSE PLASTIC PLUS

ECLIPSE PLASTIC PLUS POLYMER SHELVING

ECLIPSE PLASTIC PLUS POLYMER SHELVING



10 YEAR ANTIBACTERIAL & ANTI-CORROSION GUARANTEE WITH EXTRA HEAVY-DUTY 360KG* SHELF LOAD

- Mix and match - removable solid or vented shelf panels
- Removable polymer shelf panels for extra hygiene
- Temperature resistant from -29°C to $+88^{\circ}\text{C}$
- 99.9% effective antibacterial additive to posts, frames and shelf panels
- Fully adjustable – shelf heights every 25mm
- Available in 48 size combinations
- 1625mm, 1820mm and 2130mm height options

* Note: Load capacity based on static units. Load capacities vary according to design. Please contact us for accurate load bearings for your desired design.

DEPTH (mm)	LENGTH (mm)								
	460	610	760	915	1070	1220	1370	1520	1820
460	•	•	•	•	•	•	•	•	•
610	•	•	•	•	•	•	•	•	•



Removable polypropylene panels for easy cleaning in a commercial washer*

*Standard commercial dishwasher & detergents only. Frame wipe clean with damp sponge or water jet only. Temperature resistance range is -29°C to $+88^{\circ}\text{C}$

Add swivel castors for mobility. Available in 75mm, 100mm and 120mm sizes. Unbraked and braked options.



making better use of space

EKO FIT

FLEXIBLE POLYMER SHELVING SYSTEM



EKO FIT

EKO FIT POLYMER SHELVING



THE MOST FLEXIBLE SHELVING SYSTEM AVAILABLE, WITH LENGTHS UP TO 2 METRES AND 330 SIZE VARIATIONS

- Superior strength and hygiene,
- Load bearing parts are manufactured with high strength anodised aluminium, up to 250kg per shelf and 1000kg per bay UDL
- Plastic components moulded to high resistance using basic acids and bacteria proof raw materials
- Easily removable and dishwasher proof shelf slats
- Temperature resistance range is -30°C to $+90^{\circ}\text{C}$

*Note: Load capacity based on static units. Load capacities may vary according to design. Please contact us for accurate load bearings for your desired design. Shelf elements suitable for cleaning in standard commercial dishwasher and detergents. Not suitable for use in autoclaves. Easy to clean wipe down surface or simply remove slats.



Removable polyethylene shelf elements for easy cleaning

Available in:

- 5 depths - 300, 375, 450, 525 and 600mm
- 22 lengths - 470-2045mm in 75mm increments
- 4 heights - 1550, 1700, 2000 and 2450mm

making better use of space

ECLIPSE STAINLESS STEEL WIRE

OPEN WIRE SHELVING SYSTEM



ECLIPSE STAINLESS STEEL WIRE SHELVING



GRADE 304 STAINLESS STEEL, UP TO 300KG* SHELF LOAD

- Shelves manufactured in grade 304 stainless steel, posts in hard wearing blue chrome
- Grade 304 stainless steel post upgrade option
- Innovative design - reduce costs and improve access using add - on units
- Suitable for use in many environments including wet and dry areas

*Note: Load capacity based on static units. Load capacities may vary according to design. Please contact us for accurate load bearings for your desired design

DEPTH (mm)	LENGTH (mm)				
	915	1070	1220	1520	1820
460	•	•	•	•	•
610	•	•	•	•	•



Quick and easy to assemble bolt - free, no specialist tools required.

Fully adjustable - shelf heights every 25mm.

Add swivel castors for mobility. Available in 75mm, 100mm and 120mm sizes. Unbraked and braked options.



making better use of space

STAINLESS STEEL

SOLID & VENTED SHELF OPTIONS



STAINLESS STEEL

STAINLESS STEEL SHELVING



FLEXIBLE STAINLESS STEEL SHELVING WITH SOLID OR VENTED SHELVES.

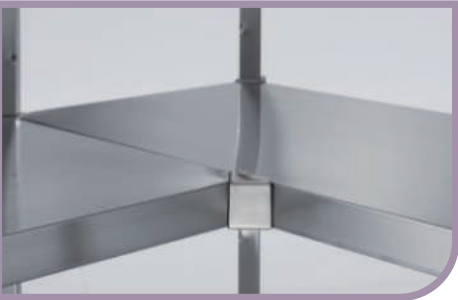
- Grade 304 stainless steel posts and shelves
- Temperature resistant to 30°C
- Fully adjustable - shelf heights every 100mm
- Adjustable post feet for uneven floors
- Quick and easy to assemble - bolt-free, no specialist tools required
- Up to 200kg shelf load UDL

*Note: Load capacity based on static units. Load capacities vary according to design. Please contact us for accurate load bearings for your desired design.

DEPTH (mm)	LENGTH (mm)			
	360	460	560	660
660	•	•	•	•
760	•	•	•	•
860	•	•	•	•
960	•	•	•	•
1060	•	•	•	•
1160	•	•	•	•
1260	•	•	•	•
1360	•	•	•	•
1460	•	•	•	•
1560	•	•	•	•
1660	•	•	•	•
1760	•	•	•	•
1860	•	•	•	•
1960	•	•	•	•
2060	•	•	•	•

*Note: Lengths include 2 x 30mm posts.

Add swivel castors for mobility.
Available in 75mm, 100mm and 120mm sizes.
Unbraked and braked options.



making better use of space

HIGH DENSITY STORAGE

MORE STORAGE IN LESS SPACE



HIGH DENSITY STORAGE

HIGH DENSITY STORAGE

Why High Density Storage?

High density storage is a grand name for a very simple idea - get more storage into the same space by removing all but one access aisle. By using mobile units between static ends, the aisle becomes moveable; so the unnecessary aisle in the static system now become additional units in the high density system.



We offer 2 types of High Density systems to maximise your surface area storage:

FLOOR TRACK HD

- Mobile shelving unit slides easily along aluminium floor tracks on Grade 304 stainless steel blocks
- Use on all Eclipse range shelving & Eko Fit
- Use in dry store, cold rooms and freezers
- Lower cost than other HD options
- Retro-fit to existing shelving
- One piece stainless steel rolling block allows for smooth action with minimal drift
- Up to 400kg loading per mobile unit

TRACKLESS OVERHEAD HD

- Mobile units mounted on Grade 304 stainless steel blocks glide easily on standard smooth flooring
- Kept in line with overhead aluminium guide rails and top mounted stainless steel shuttles
- No floor track, so easy to keep clean
- Use on all Eclipse range shelving & Eko Fit
- Up to 1800mm unit length and spans up to 4 metres
- Retro-fit to existing shelving
- One piece stainless steel rolling block allows for smooth action with minimal drift
- Up to 400kg loading per mobile unit

Includes free site survey and end-to-end planning from concept to installation

making better use of space

SMALL-PART STORAGE

IDEAL FOR STORAGE OF LOOSE ITEMS



SMALL-PART STORAGE

SMALL-PART STORAGE



- DSL's small-part storage units are ideal for storing loose items such as nuts, bolts and tools.
- Units (1980mm high) are available in epoxy coated steel or stainless steel and can be supplied as single, one column units. They can be made bigger with the use of add-on units.
- Trays slide into runners that easily attach to the frame without the use of tools.
- The unique design of the trays means that dividers can be fitted inside to customise the size of the compartments.
- The trays are available in depths of 50mm, 100mm or 200mm and either clear or grey ABS plastic.



making better use of space

TROLLEYS



GENERAL PURPOSE TROLLEYS



304 GRADE STAINLESS STEEL GENERAL PURPOSE TROLLEY

- Dished shelves with anti-drip edges
- Wipe clean hygienic design
- Welded construction
- Rubber disc bumpers
- Non-marking castors, 2 braked
- No assembly required

DEPTH (mm)	LENGTH (mm)					
	840	940	1120	840	940	1120
550	•			•		
600		•			•	
710			•			•

COATED GENERAL PURPOSE TROLLEY

- Grey colour powder coated steel frame
- Removable aluminium shelves
- Non-marking castors, 2 braked
- No assembly required
- 825 x 525 x 900mm high - 2 or 3 tier option



ECLIPSE CHROME WIRE GENERAL PURPOSE TROLLEY

- 2 or 3 tier trolley, manufactured from steel with a hard-wearing blue chrome finish
- Supplied with 75mm castors, 2 braked
- 1060mm height
- Maximum load 210kg



**Upgrade
Available**

DEPTH (mm)	LENGTH (mm)					
	2 Tier			3 Tier		
	610	760	915	610	760	915
460	•	•	•	•	•	•
610	•	•	•	•	•	•

making better use of space



Upgrade
Available

CHROME-WIRE TROLLEYS



ECLIPSE CHROME WIRE BASKET TROLLEY

- 90mm high basket shelves.
- Supplied with 75mm castors, 2 of which are braked.
- Maximum load 210kg.
- Height 1060mm
- 2 or 3 tier options available

DEPTH (mm)	LENGTH (mm)	
	610	915
460	•	•

ECLIPSE CHROME WIRE LIPPED EDGE TROLLEY

- 25mm lipped edge shelves.
- Supplied with 75mm castors, 2 of which are braked.
- Maximum load 210kg.
- Height 1060mm
- 2 or 3 tier options available

DEPTH (mm)	LENGTH (mm)	
	610	915
460	•	•



ECLIPSE CHROME WIRE COMBINATION TROLLEY

- 2 tier trolley, 1 shelf and 1 basket.
- Supplied with 75mm castors, 2 of which are braked.
- Maximum load 210kg.
- Height 1060mm

DEPTH (mm)	LENGTH (mm)	
	610	915
460	•	•

making better use of space

LINEN/LAUNDRY CARTS AND SECURITY CAGES



ECLIPSE CHROME LAUNDRY & LINEN CARTS

- For collection of soiled laundry and distribution of clean linen.
- Open wire design for excellent air-flow.
- Quick and easy to assemble
- Fully adjustable - shelf heights every 25mm
- Supplied with 120mm castors, 2 of which are braked.
- Maximum unit load 300kg.

ECLIPSE Chrome Laundry Collection Cart (Left) and Linen Distribution Cart (Right)



Upgrade Available

DEPTH (mm)	LENGTH (mm)				
	Laundry Cart		Linen Distribution Cart		
	915	1220	915	1220	1520
460	•	•	•	•	•
610	•	•	•	•	•



ECLIPSE SECURITY CAGES

Providing secure storage for high value or high risk items such as electronics, small parts or pharmaceuticals.

- Finished in hard-wearing blue chrome.
- Number of shelves stated includes the top and bottom shelf.
- Padlock not included.
- Unit is supplied assembled ready for use.
- Available with 3, 4 or 5 shelves.
- Max load 300kg UDL per shelf on static units.
- Max load 300kg UDL per unit on mobile units.

DEPTH (mm)	LENGTH (mm)	
	610	915
460	•	•

making better use of space



Upgrade
Available

ORDER PICKING TROLLEYS



Order Picking Trolleys

- It is essential to have the right equipment when picking products in a warehouse or similar facility. This is to ensure the safety of employees and efficiency of work-flow.
- Our order picking trolleys are specifically designed for loading, transporting and unloading boxes and packages of different shapes, sizes and weights
- Accessories such as the handle, side/back grids and shelf dividers make these trolleys very easy to use, products can be easily organised on each shelf level.
- Swivel castors make the trolleys highly manoeuvrable and the 2 braked castors means they can be secured in place during the loading/unloading process.

making better use of space

ORDER PICKING TROLLEYS

ORDER PICKING TROLLEYS



Upgrade
Available

- 5 tier picking trolley with shelf dividers
- Heavy duty shelf at the bottom
- Mesh panels either end
- Short Handle
- 120mm castors, 2 of which are braked
- 460 x 1220 x 1625mm



- 4 tier picking trolley with 3 basket shelves
- Heavy duty shelf at the bottom
- Mesh panels either end
- Option of back grids
- Short Handle
- 120mm castors, 2 of which are braked
- 460 x 915 x 1625mm

- 4 tier picking trolley with top sloping shelf
- Heavy duty shelf at the bottom
- Shelf ledges on middle 2 shelves
- Short Handle
- 120mm castors, 2 of which are braked
- 460 x 1220 x 1625mm



- 4 tier picking trolley with 2 top sloping shelves
- Heavy duty shelf at the bottom
- Shelf ledges 3rd shelf down
- Short Handle
- 120mm castors, 2 of which are braked
- 460 x 915 x 1625mm

making better use of space

ORDER PICKING TROLLEYS

EURO BOX STORAGE



Modular box storage, designed for the storage and transportation of Euro size boxes.

- Available in 7 size combinations
- Bolt-free design for quick and easy assembly
- Simply snap the collar onto the post anywhere on a 25mm pitch and drop the runner into position
- Strong and durable - max unit load 210kg, 15kg per level
- Constructed from mild steel finished in hard wearing polished chrome, with or without standard 75mm castors
- Mix & match: Boxes of different heights can be stored within the same unit

**Boxes sold separately*

making better use of space

EURO BOX STORAGE



- Units supplied in kits, comprising 2 x 4 sided frames (480 x 610mm), 4 posts, box runners and the option of 75mm castors
- Fully adjustable to accept any combination of 600mm x 400mm Euro boxes
- The following sizes are available:

TO FIT 120mm BOX	HEIGHT
6 tier	1200mm
8 tier	1450mm
10 tier	1750mm

TO FIT 220mm BOX	HEIGHT
3 tier	1200mm
6 tier	1750mm

TO FIT 325mm BOX	HEIGHT
2 tier	1200mm
4 tier	1750mm

making better use of space

LOCKERS



EXPRESS LOCKERS

- 1, 2, 3, 4, 5, 6 or 8 door lockers
- Height: 11800mm
Width: 300mm or 450mm
Depth: 300mm or 450mm
- All lockers supplied with mid grey carcass with doors available in green, blue, dark grey, red, yellow, black or mid grey
- Anti-bacterial powder coating
- Robust steel construction with rebated doors
- Various lock options
- Semi concealed door hinges

making better use of space

LOCKERS

ECLIPSE WIRE MESH LOCKERS

Providing secure storage for high value or high risk items such as electronics, small parts or pharmaceuticals

- Manufactured from electroplated zinc finished 2.5mm wire, with a 25 x 25mm grid and 8mm frames
- All sizes fitted with hasp and staple lock; single and 2 door lockers also have 3 point locking system (padlocks not included)
- Fitted with 150mm legs and floor brackets (fixings not included)



No. of Doors	Sizes mm (DxL)
Single door locker	305 x 305 x 1980
	305 x 380 x 1980
	305 x 450 x 1980
	450 x 450 x 1980
2 door locker	305 x 305 x 1980
	305 x 380 x 1980
	305 x 450 x 1980
	450 x 450 x 1980
3 door locker	305 x 305 x 1980
	305 x 380 x 1980
	305 x 450 x 1980
	450 x 450 x 1980

No. of Doors	Sizes mm (DxL)
4 door locker	305 x 305 x 1980
	305 x 380 x 1980
	305 x 450 x 1980
	450 x 450 x 1980
5 door locker	305 x 305 x 1980
	305 x 380 x 1980
	305 x 450 x 1980
	450 x 450 x 1980
6 door locker	305 x 305 x 1980
	305 x 380 x 1980
	305 x 450 x 1980
	450 x 450 x 1980

All available in 1, 2 or 3 columns

making better use of space

HAZARDOUS CUPBOARDS



- Supplied with adjustable spillage trays and liquid tight sump tray.
- Doors are rebated and secured by chrome locking handle.
- High visibility powder coated finish with appropriate warning labels.

Floor Cupboards

460 x 900 x 1200
460 x 900 x 1800
460 x 1200 x 1800
300 x 350 x 700
460 x 900 x 700
460 x 460 x 900
460 x 900 x 900

Mobile Cupboards

460 x 900 x 1040
460 x 900 x 840

Floor Chests

340 x 610 x 510
460 x 1170 x 610

Stands

460 x 460
460 x 900
300 x 350

Extra Shelves

460 x 900
460 x 1200
460 x 460
300 x 350

Wall Mounted

255 x 850 x 570

making better use of space

COSHH CUPBOARDS



CUPBOARDS SUITABLE FOR THE SEPARATE STORAGE OF HAZARDOUS SUBSTANCES AS REQUIRED UNDER THE COSHH REGULATIONS

- Snag-free handles with 2 point locks
- Adjustable galvanised shelves with spill-retaining edges for excellent spill management*
- Integral liquid-tight sump to provide correct handling of spills using absorbents*
- Wall cupboards pre-drilled for mounting—fixings not included
- Stands include adjustable feet for uneven surfaces

Floor Cupboards

460 x 900 x 1200
460 x 900 x 1800
460 x 1200 x 1800
340 x 610 x 510
460 x 1170 x 610
300 x 350 x 700
460 x 900 x 700
460 x 460 x 900
460 x 900 x 900

Mobile Cupboards

460 x 900 x 1040
460 x 900 x 840

Floor Chests

340 x 610 x 510
460 x 1170 x 610

Stands

460 x 460
460 x 900
300 x 350

Extra Shelves

460 x 900
460 x 1200
460 x 460
300 x 350

Wall Mounted

255 x 850 x 570