

accuracy in motion. accuracy in motion

# TrainWate MDS

accuracy in motion. accuracy in motion

## in-motion rail scale



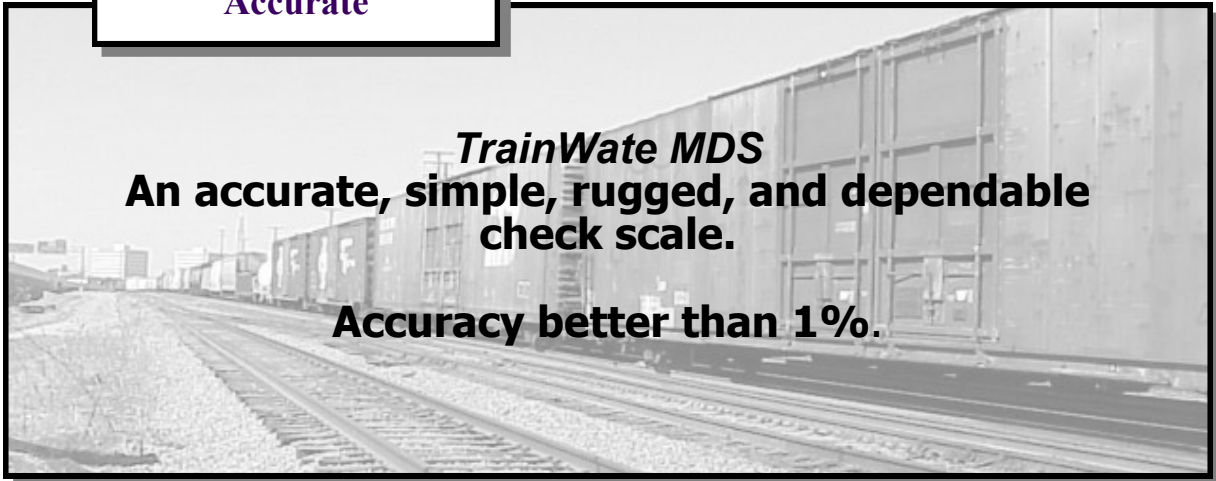
**Installs in One Day  
Lower in Cost  
Accurate**

The **TrainWate MDS** coupled in-motion rail scale eliminates the need for expensive pits and weigh bridges.

It's simple installation reduces the high costs associated with scales equal to the **TrainWate MDS** tolerances.

The **TrainWate MDS** can be installed on your site in **ONE DAY**.

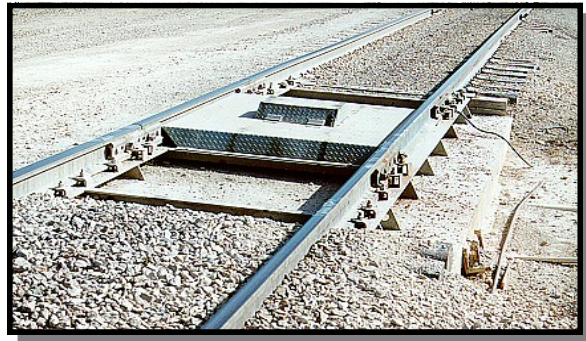
Weigh coupled in-motion at up to **6 MPH**.



**TrainWate MDS**  
**An accurate, simple, rugged, and dependable check scale.**

**Accuracy better than 1%.**

*No scale is easier to operate than the TrainWate MDS coupled in-motion rail scale. Its point and click with our new Windows based software. Add the AEI car-tag reader and get all the information for the cars weighed into a simple yet detailed report that can be saved for future use.*



## Viking Scales, Inc.



**www.vikingscales.com**  
**sales@vikingscales.com**

accuracy in motion

**Call us today at:**  
**(512) 917-3712**



**Viking Scales, Inc.**

accuracy in motion

**TrainWate MDS**  
Coupled In-Motion  
Rail Scale

### **Technical Description**

The **TrainWate MDS** weighs coupled in-motion cars, one axle at a time. The **TrainWate MDS** consists of two rails, one Datataker/Junction Box, 110VAC multiple outlet, surge suppressor, temperature sensor and lightning protection. All these components together along with the proper foundation will produce axle weights with better than 1% accuracy for most cars. Installation time on this configuration is typically less than one 8 hour work day. The scale is Windows based and is absolutely the easiest scale to operate and maintain.

### **GENERAL**

Accuracy of car weights is <1%.

### **ELECTRICAL REQUIREMENTS**

120 vac 30 amps

### **DELIVERY AND INSTALLATION**

4 - 6 weeks (subject to prior sale).

Buyer will provide crew for all track work and concrete work if needed.

Viking Scales, Inc. will supervise installation of the scale and will calibrate the system, train the scale operators on proper use and maintenance of the equipment.

### **VIKING SCALES, INC. TO PROVIDE THE FOLLOWING**

One (1) TrainWate MDS as above F.O.B. Marble Falls, TX including:  
115# Weigh Rails (one set of two)  
Datataker  
Steel Cover Plate  
Shielded Cable  
Surge Suppressor  
Temperature Sensor  
TrainWate MDS Software  
AEI Car Tag Reader (optional)

### **BUYER TO PROVIDE THE FOLLOWING**

One Scale House w/HVAC to maintain temperature of 60-90 degrees F.  
One (1) computer system w/Windows 10 w/serial port  
Four (4) pairs of insulated joints  
Four (4) select uniform crossties  
Four (4) pairs Compromise Joint bars (if required) 115# to \_\_\_\_  
Conduit: 1" EMT  
Two (2) Bridge Timbers  
Installation labor including:  
Excavation by backhoe and/or front-end loader  
Backhoe operator  
Track gang  
All tools necessary for completion of installation