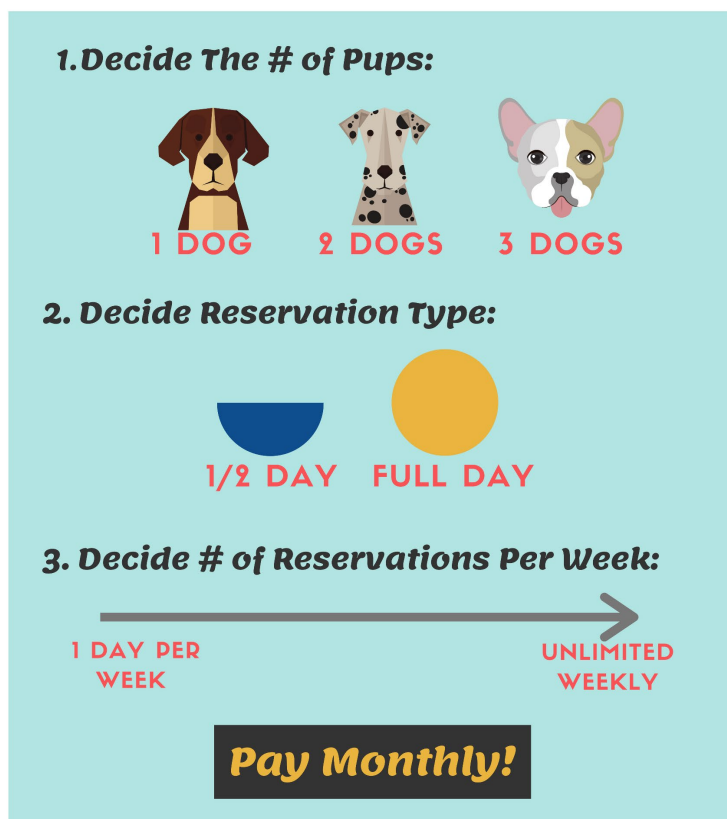


## Monthly Payment Plans

Introducing a new way to pay! With our new payment plan, you'll be able to pay monthly for a customized daycare plan that fits you and your pup's needs.

Here's how it works.



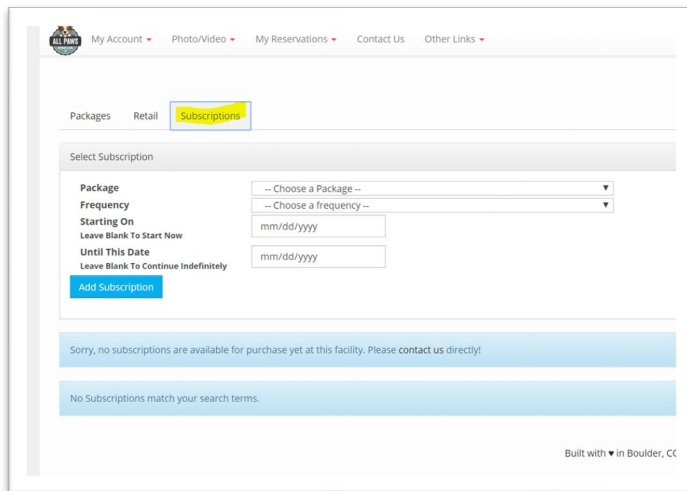
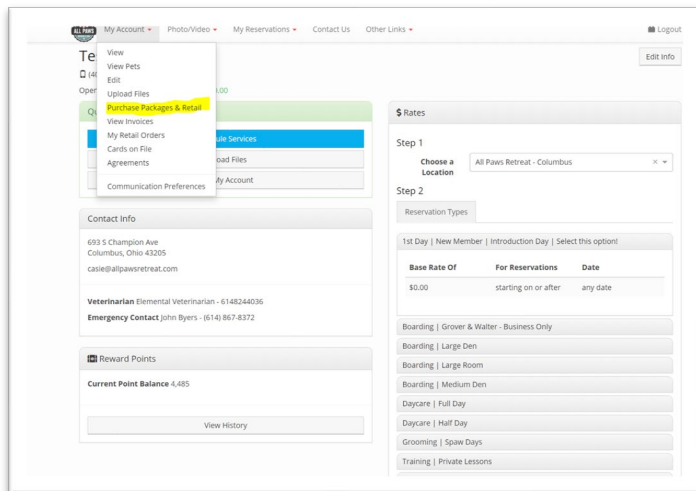
## How Much Does it Cost?

Full Days	One Dog Package Price	Two Dogs Package Price	Three Dogs Package Price
1 day a week	\$ 115	\$ 220	\$ 285
2 days a week	\$ 198	\$ 336	\$ 432
3 days a week	\$ 273	\$ 520	\$ 702
4 days a week	\$ 340	\$ 646	\$ 816
5 days a week	\$ 399	\$ 756	\$ 945
Unlimited Monthly	\$ 496	\$ 930	\$ 1,209

Half Days	One Dog Package Price	Two Dogs Package Price
2 days a week	\$ 131	\$ 252
3 days a week	\$ 182	\$ 351
4 days a week	\$ 230	\$ 442
5 days a week	\$ 273	\$ 525
Unlimited Monthly	\$ 325	\$ 624

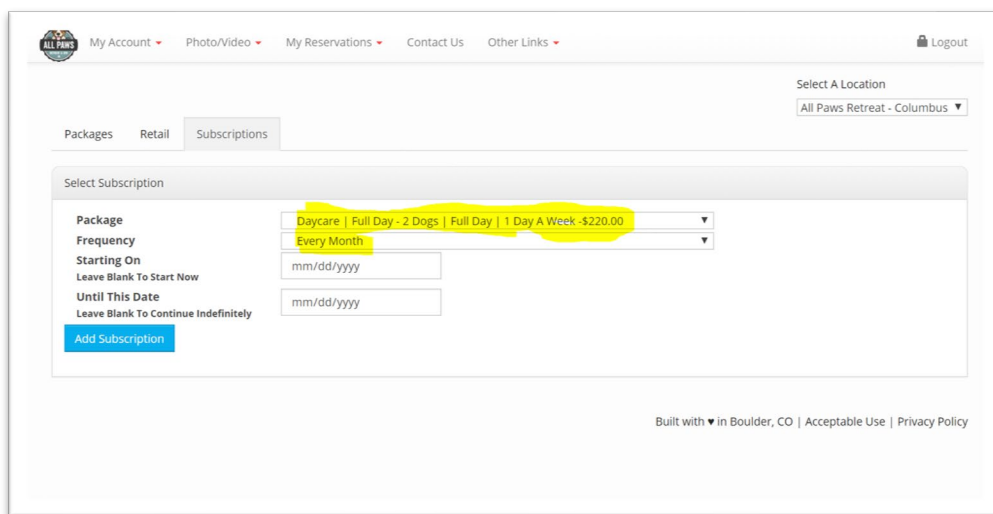
## Great. How do I purchase this?

It's easy! Simply log into your dashboard by using your email or phone number and password. Once on your dashboard, select the "My Account" drop-down and then "Purchase Packages & Retail".



From the subscriptions tab, select the package type you'd like to purchase, set the frequency as "Monthly". Once these items have been selected, complete the transaction by selecting the "Add Subscription" button.

**\*\*\*Note: You must have a credit card on file in order to participate.**



## What else do I need to know?

- Subscription members MUST schedule daycare in advance.
- Packages are non-refundable and are based on a use it or lose it model.
- Each month, you will be allocated a number of credits associated to the package you purchased. If you use more than allocated, you will receive a 10% discount full price services.
- Packages will automatically renew, unless you choose otherwise.