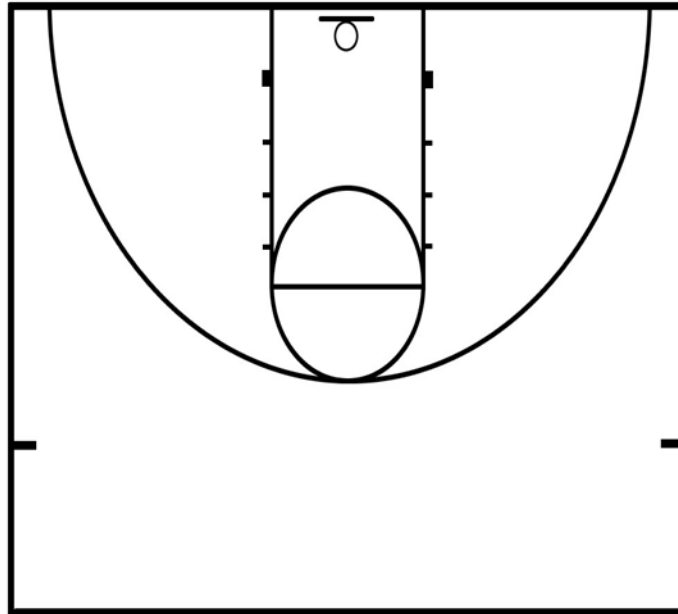


Please show where each position goes on offense.

(Example: write 1 where the PG should be and so on and so on.)



What position takes the ball out of bounds each time? _____

Which lane should the 2 (SG) run in? Right or Left (Circle one)

List the two ways the 1 (PG) is supposed to receive the ball from out of bounds.

-
-

List the 6 different types of screens that Coach has talked about.

- 1.
- 2.
- 3.
- 4.
- 5.
- 6.

TERMINOLOGY TEST

What does pick the picker mean?

What is a flare screen?

What side of the floor is considered strong side?

What is a baseline runner? When do you use one?

What does rim run mean?

What does get below the ball mean?

