

THE DOUBLE-EDGED CROWN: A SCOTTISH TRAGEDY



EDINBURGH CASTLE



STIRLING CASTLE



HONOURS OF SCOTLAND



MARY QUEEN OF SCOTS



MURDER OF RIZZO



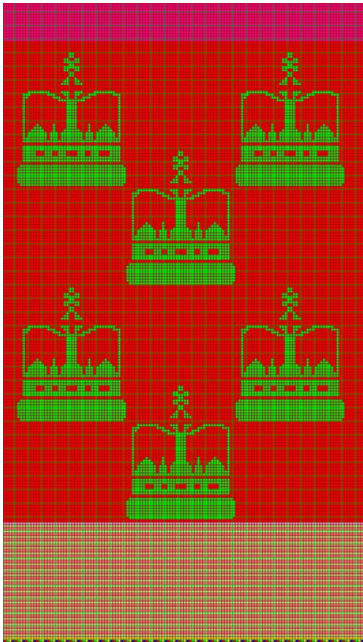
FEEL THE PATTERN



All samples are plated purl samples designed on Shima Apex 3 and knitted on a 12 gauge Shima machine with fine cashwool yarn, plated with silk yarn.

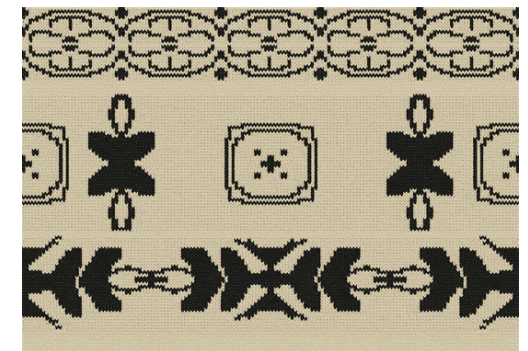
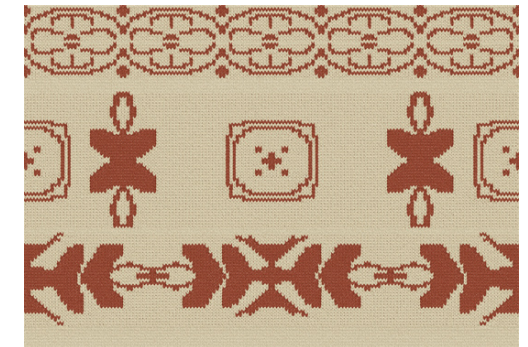
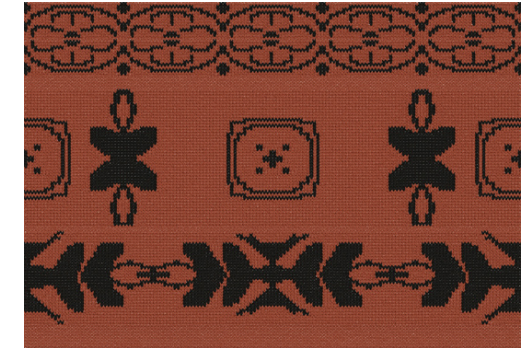
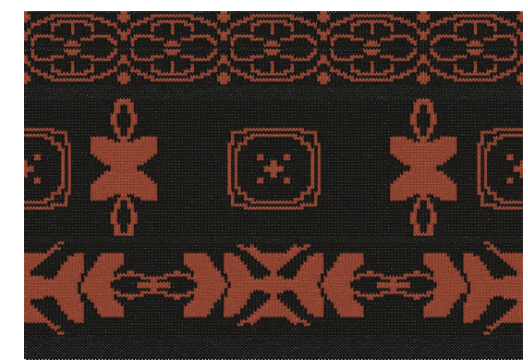
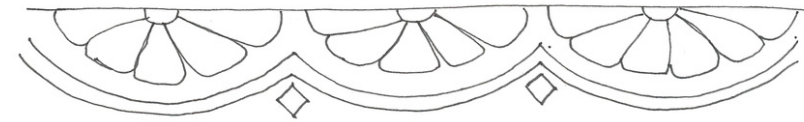
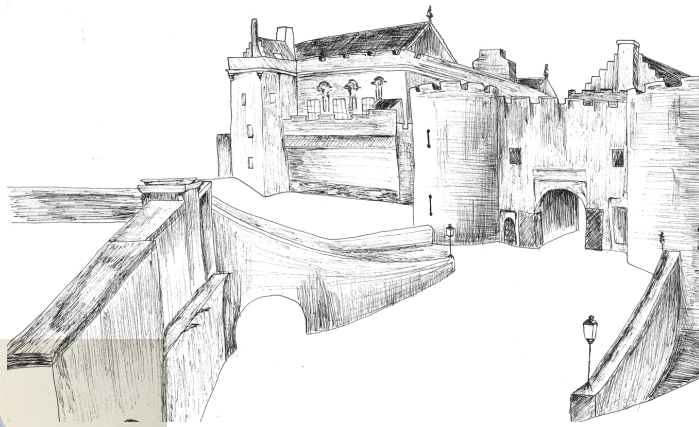


Using front and back bed transferring to create graphic patterns which can be felt and alter the handle of the fabric





Jacquard designed on Shima Apex 3 and knitted on a 12 gauge Shima machine with fine cashwool yarn.

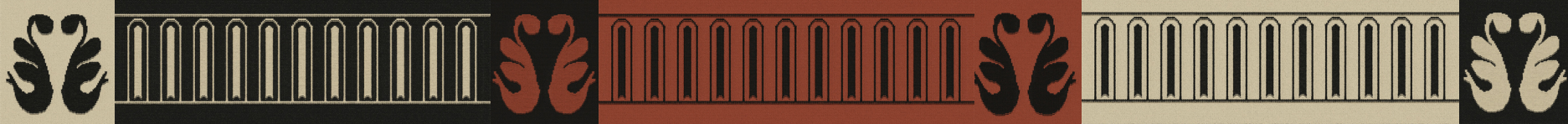


The toile de jouy style jacquard shows Mary Queen of Scots life. Where she grew up and lived important moments and where she was held captive.

Produced monochromatic fairisles from the Queen's son, James VI's crib detailing. The fairisle patterns are meant to be a modern twist as they have just 2 colours and are slightly larger in scale.

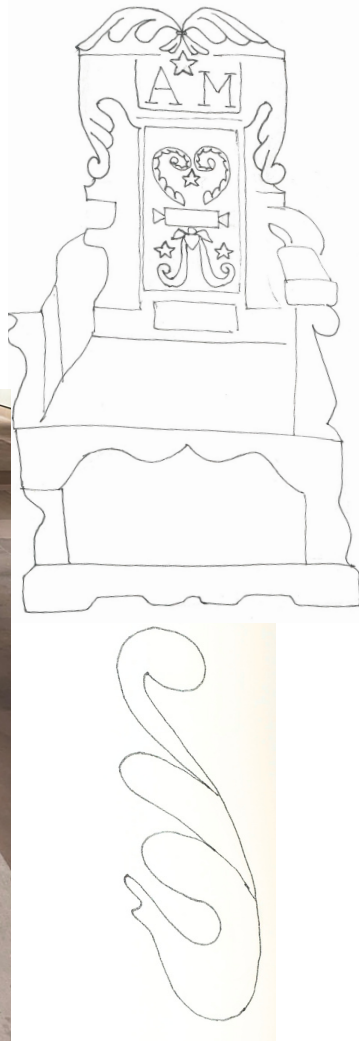


Whole garment reversible 2 colour jacquard jumper simulation

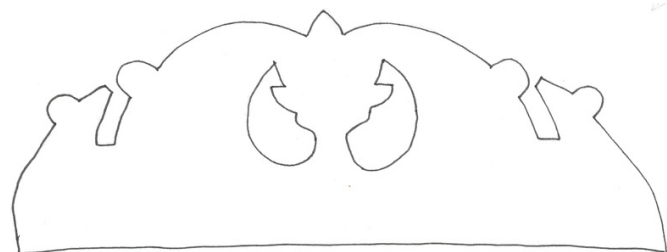


TO NURSE YOUR CHILD

Developed front and back bed patterns from James VI's crib and nursing chair.



Designed on Shima Apex 3 and knitted on a 12 gauge Shima machine with fine cashwool yarn gold silk yarn for plating.



Trialed trims and overall placements to develop a large reversible vest through the use of plating,



SCOTTISH HERITAGE



Both designs are 2 colour reversible jacquard designed on Shima Apex3 and knitted on a 12 gauge Shima machine with cash wool yarn.



Visulisations are my 2 colour reversible jacquards knitted and draped onto mannequinnns emulating dramatic capes.