

OCTOBER 2019

# UNDER THE HOOD

With Don Brown Automotive & Transmission



## Fall Car Care Month

Summer driving takes a toll on vehicles. Fall is the perfect time to get ready for winter hazards, like snow and ice.

### Schedule your \$49 Fall Service Special Today!

- Tire Rotation & Evaluation
- Belts, Hoses, Fluid Inspection
- Battery & Terminal Inspection
- Oil & Filter Change
- Brake Evaluation



## October Events

### Car Care Month

October 1  
International  
Coffee Day

October 17  
National Pasta Day

October 19  
Sweetest Day

October 31  
Halloween

## Trick or Treat Safety

Look twice! Be extra careful backing out of driveways and driving through neighborhoods! Kids are harder to see and dart everywhere!

Teach kids to exit from the curb side, not the street side, and to look both ways twice before crossing driveways and streets.

Add reflective stickers, bright clothing, and flashlights to costumes.

Check windshield wipers, headlights, brakes, and tail lights before Halloween.



## Trunk or Treat



Many churches, schools, and other groups are organizing Trunk or Treat events as an alternative to traditional trick or treating.

These events are marketed as safer

and work well for smaller children who can easily become overwhelmed with traipsing through neighborhoods. If you don't feel very creative, you can find Trunk or Treat kits online at Michael's or Oriental Trading starting at \$25.



## Road Trips for Fall Leaves

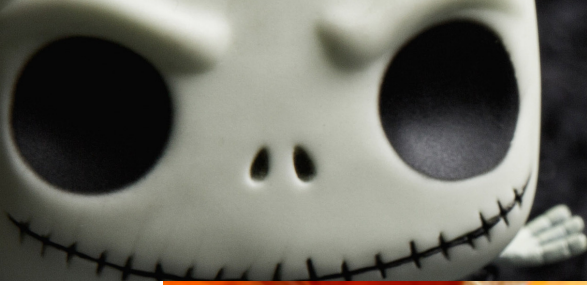
Georgia's State Parks offers an online Leaf Watch Travel Planner to help road trippers find the best fall foliage and peak times to view those vibrant fall hues! The site will post regular updates beginning in October, but the traditional peak leaf viewing time is most often late October to early November.

Bookmark [gastateparks.org/leafwatch](http://gastateparks.org/leafwatch) to stay updated on the progression of fall colors and where to view them. The site posts also posts trails, cabins, campsites, and events in the Georgia Blue Ridge area.

“Autumn is a second spring when every leaf is a flower.”

ALBERT CAMUS





Come in Today  
For Our Fall  
Service Discount

(770) 945-9550

Don Brown  
Automotive &  
Transmission

3292 McEver Road Ste 101  
Buford, GA

**\$10 OFF  
\$100**

Don Brown Automotive & Transmission  
Excludes Fleet Customers, Batteries, Tires, and  
Special Ordered Parts. Expires 10/31/19

**\$20 OFF  
\$200**

Don Brown Automotive & Transmission  
Excludes Fleet Customers, Batteries, Tires, and  
Special Ordered Parts. Expires 10/31/19

**\$30 OFF  
\$300**

Don Brown Automotive & Transmission  
Excludes Fleet Customers, Batteries, Tires, and  
Special Ordered Parts. Expires 10/31/19

**\$40 OFF  
\$400**

Don Brown Automotive & Transmission  
Excludes Fleet Customers, Batteries, Tires, and  
Special Ordered Parts. Expires 10/31/19



## What's For Dinner? By Bethany

Creamy Crockpot White Chicken Chili  
by The Chunky Chef

### Ingredients:

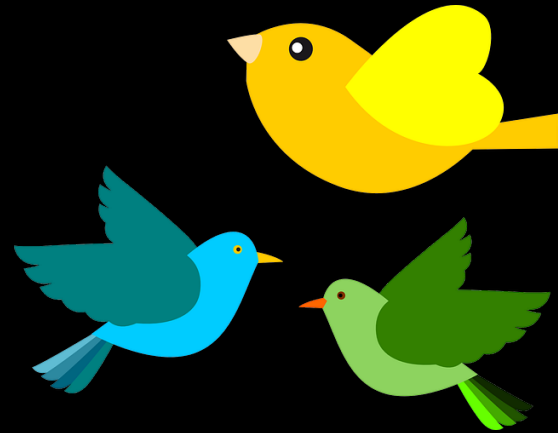
1 lb boneless skinless chicken breasts, trimmed  
1 yellow onion, diced  
2 cloves minced garlic  
24 oz. chicken broth (low sodium)  
2 15oz cans great Northern beans drained and rinsed  
2 4oz cans diced green chiles (I do one hot, one mild)  
1 15oz can whole kernel corn drained  
1 tsp salt  
1/2 tsp black pepper  
1 tsp cumin  
3/4 tsp oregano  
1/2 tsp chili powder  
1/4 tsp cayenne pepper  
small handful fresh cilantro, chopped  
4 oz reduced fat cream cheese, softened  
1/4 cup half and half

Optional Toppings: sliced jalapenos, sliced avocados, dollop of sour cream, minced fresh cilantro, tortilla strips, shredded Monterey jack, cheddar, or Mexican cheese

### Instructions:

Add chicken breasts to bottom of slow cooker, top with salt, pepper, cumin, oregano, chili powder, and cayenne pepper. Top with diced onion, minced garlic, great Northern beans, green chiles, corn, chicken broth and cilantro. Stir. Cover and cook on LOW for 8 hours or on HIGH for 3-4 hours.

Remove chicken to large mixing bowl, shred, then return to slow cooker. Add cream cheese and half and half, stir, then cover and cook on HIGH for 15 minutes, or until chili is creamy and slightly thickened. Stir well and serve with desired toppings.



## Why do birds fly south in the fall?

## Because it's too far to walk!