



Business Exchange Group
4851 Merlot Ave., Suite 540
Grapevine, Texas 76051

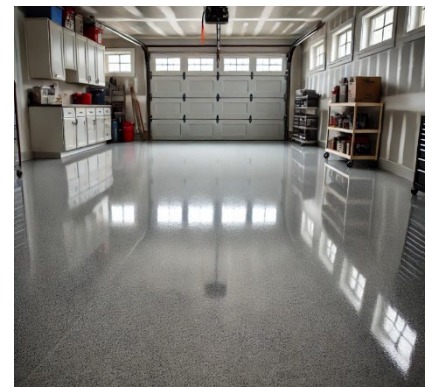
Phone: 817-421-8800
Facsimile: 817-421-8822
Email: info@businessexchange.group



DALLAS-FORT WORTH CONCRETE COATING BUSINESS FOR SALE

An established concrete coating business, which has been operating and a part of the community since 2014, is looking for a potential buyer. The business specializes in residential garage floors and light commercial work, focusing on customer service, satisfaction, and quality. This turnkey operation offers a solid foundation in a competitive industry, with proven success and multiple avenues for future growth. After a decade of success, the owner is selling the North Texas location due to personal reasons, which required a move out of state.

- **AVERAGE SELLER'S DISCRETIONARY EARNINGS OVER LAST 3 YEARS IS \$186K IN TX**
- **OWNER WORKS PART-TIME AND IS OUT OF STATE**
- **KEY PERSONNEL IN PLACE: GENERAL MANAGER & LEAD INSTALLER - BOTH HAVE BEEN WITH BUSINESS OVER 7 YEARS**
- **STRONG REPUTATION: ALL 5-STAR REVIEWS FOR 10 YEARS STRAIGHT**
- **SOLID REVENUE: \$1M ANNUAL SALES THROUGH ORGANIC CHANNELS IN 2 LOCATIONS**
- **GROSS MARGINS: APPROX. 40% LAST THREE YEARS & RECENTLY NEGOTIATED NEW VENDOR PRICING**
- **LOW RATE OF CUSTOMER CALLBACKS ; WARRANTY RATE IS < 0.25%**
- **ALL EQUIPMENT IN PLACE TO RUN A SECOND CREW ; POTENTIAL TO DOUBLE REVENUE WITH TAX-DEDUCTIBLE EXPENSE**
- **NO CUSTOMER REPRESENTED MORE THAN 5% OF SALES**
- **EXPANSION OPPORTUNITY: OPTION TO PURCHASE SECOND LOCATION IN SANTA FE, NM WOULD BE CONSIDERED**



ASKING PRICE: \$597,000

The asking price is based on the going forward value of the business, trademarks, vendor contacts, customer relationships, equipment, and inventory.



Please scan the QR code to complete a confidentiality agreement for additional information!

GROWTH POTENTIAL

SKILLED SALESPERSON THE ADDITION OF A SKILLED SALESPERSON TO ASSIST WITH CUSTOMER SERVICE AND SALES COULD SIGNIFICANTLY CONTRIBUTE TO INCREASED REVENUE AND EXPANSION.

POPULATION GROWTH ACCORDING TO FRED, APPROX. 39,000 NEW HOME PERMITS WERE AUTHORIZED IN DFW DURING 2023

ALTERNATIVE REVENUE STREAMS THERE ARE ALSO A HANDFUL OF REVENUE STREAMS THAT COULD BE ADDED TO THE CURRENT BUSINESS MODEL SUCH AS STAINED CONCRETE, CONCRETE SEALING, POOL DECKS, CONCRETE OVERLAYS. AND GARAGE ORGANIZATION.



Business Exchange Group
4851 Merlot Ave., Suite 540
Grapevine, Texas 76051

Phone: 817-421-8800
Facsimile: 817-421-8822
Email: info@businessexchange.group

DALLAS-FORT WORTH BAKERY FOR SALE



An established artisan bakery, which has been operating and a part of the community since the 1990's, is looking for a potential buyer. The bakery specializes in making high quality breads and sweets with organic ingredients. Over the last three years, revenue has increased by double digit percentages thanks to the loyal and growing customer base. After almost 3 decades of success, the owner is looking forward to retirement.

- **LOCATED IN A HIGH TRAFFIC SUBURB OF DFW**
- **GROSS REVENUE: 2020 \$407K, 2021 \$488K, & 2022 \$557K**
- **GROSS MARGINS BETWEEN 81-84% LAST THREE YEARS**
- **CASH FLOW: 2020 \$131K, 2021 \$202K, & 2022 \$214K**
- **LOYAL CUSTOMER BASE - ESTIMATED 75% OF CUSTOMERS RETURN WEEKLY**
- **DESIGNATED PARKING LOT**
- **LEASE ASSUMABLE; SELLER OWNED**
- **BUILDING: 3,000 SQ FT**



ASKING PRICE: \$450,000

The asking price is based on the going forward value of the bakery, trademarks, formulas, vendor contacts, equipment, and inventory.



Please scan the QR code to complete a confidentiality agreement for additional information!

GROWTH POTENTIAL

POPULATION BASED GROWTH THE BAKERY SHOULD SEE ORGANIC GROWTH AS THE POPULATION OF THE METROPLEX INCREASES.

INDUSTRY/MARKET BASED GROWTH NORTH AMERICA BAKERY PRODUCTS MARKET IS PROJECTED TO GROW AT A CAGR OF 4.8% DURING THE FORECAST PERIOD (2022-2027).

ALTERNATIVE REVENUE STREAMS THERE ARE ALSO A HANDFUL OF REVENUE STREAMS THAT COULD BE ADDED TO THE CURRENT BUSINESS MODEL SUCH AS EXPANDING IN THE CATERING, BUSINESS TO BUSINESS MARKET, AND LAMINATED DOUGH PASTRY LINE AND DECORATIVE CAKES.