



PRESIDENT'S Message

Happy New Year!

I can't believe we are into 2025 already! As we venture forward with many changes in this new year, I look forward to the collaboration and wonder this year brings to Tulsa NAWIC. A chance to build on past successes, embrace changes and empower more women in the Construction Industry.

A heartfelt thank you to the Social Committee for their dedication and effort planning a very eventful Christmas Party held in December. Attendees raved about the fun we had, and the benefit the great food and goodies brought to Crossland Employees truly highlight the impact we have.

It is inspiring to see how we make a difference in our communities and the construction industry helping Habitat for Humanity earlier in January and the upcoming Block Kids on the 23rd will undoubtedly spark curiosity and interest in the next generation about construction industry careers.

DE & I has some great opportunities, lunch January 17th and dinner on February 6th. Be sure to check the calendar of events for locations and times. Take this chance to enjoy delicious food and meaningful conversation with your NAWIC sisters.

Looking ahead to our February Meeting our Membership Committee is planning an exciting Membership Drive featuring SINGO! Start thinking about who you are going to bring along to join in the fun!

And lastly in March we'll celebrate WIC Week from March 2nd thru March 8th. Our Scholarship Fundraiser (Casino and Corn Hole event) will be Friday of WIC Week. You won't want to miss out, both committees are working hard and will provide more details soon.

**Yours always,
Dana Cookson,
NAWIC Tulsa Chapter 76 President**



INSIDE THIS ISSUE:

President's Message	1
Meeting Information	1
Events Calendar	2
Upcoming Webinars/Celebrations	3
Safety Report	4
OSU Scholarship Information	5
Meeting Minutes	6
NOTES TO THE PRESIDENT	7
WIC WEEK INFO	8
Social Media/Website Information	9
NAWIC Meeting Policies	
And Events Information	10
Red Rose	11
Board/Committee Contact List	12

NEXT MEETING:

3rd Tuesday of the Month
**Membership Meeting
Program**

**Advocating for a Safer Jobsite:
The Shortfalls of One Size Fits
All PPE for Women in
Construction**

6:00 PM

LOCATION:

**AGC Office
12121 E 51st. St.
Tulsa, OK 74146**

RSVP email by EOB 12/13/2024

julianna@colburnelect.com

UPCOMING EVENTS

JANUARY	DEI Lunch—1/17 The Tropical Membership Meeting — 1/21 6:00 pm Advocating for a Safer Jobsite: The Shortfalls of One Size Fits All PPE for Women in Construction TBD Block Kids—1/23 8:00 AM Lewis & Clark Elementary School
FEBRUARY	BOD Meeting—02/04 6:00 pm TBD DEI Dinner—2/06 6:00 pm Tandoori Guys Membership Drive— 2/18 SINGO 6:00 pm TBD
MARCH	BOD Meeting—03/04 6:00 pm TBD WIC Week 03/02-03/08: events info will be coming out soon, look for the save the date in the newsletter! Scholarship Fundraiser—03/07 more information coming Membership Meeting— DEI & PDE 03/18
APRIL	BOD Meeting—04/01 6:00 pm TBD DEI Dinner— 4/03 TiAmo's 6:00 pm Membership Meeting—Industry Appreciation: TBD
MAY	BOD Meeting—05/06 6:00 pm TBD Membership Fundraising Event—TBD
JUNE	BOD Meeting—06/03 6:00 pm TBD Membership Meeting—06/17 6:00 pm: Board of Directors Voting
JULY	BOD Meeting—TBD Summer Social—TBD
AUGUST	BOD Meeting—08/05 6:00 pm TBD Lunch & Learn—TBD
SEPTEMBER	BOD Meeting—09/02 6:00 pm TBD Membership Meeting BOD Installation—09/16 6:00 pm TBD



UPCOMING WEBINARS: www.nawic.org/webinars

National has stepped up and provided NAWIC members with some outstanding webinars throughout the upcoming year with the focus in two areas:

Professional Development & Education (PD&E) & Membership

The webinars should be available on the national website to view at your convenience if you can't attend the initial airing. The webinars are also listed in the Calendar of Events.

Leadership Academy Info. 01/14 11-12 PM CST

Bldg. LGBTQIA+ I&E in Construction. 01/16 2-3 PM CST

DEI Standing Committee 01/27 2024-25 Nat. BOD Meeting 01/23 4-5 PM CST

DEI Standing Committee 01/27

WIC Week Monthly Mtg. 02/04 10-11 AM CST

Powerless to Empowered:

Discover Your Voice with Cultural Intelligence PDE 02/13 12—1 PM CST

2024-25 Nat. BOD Meeting 3/20 4-5 PM CST

2024-25 Nat. BOD Meeting 4/24 4-5 PM CST

2024-25 Nat. BOD Meeting 5/25 4-5 PM CST

2024-25 Nat. BOD Meeting 6/26 4-5 PM CST

2024-25 Nat. BOD Meeting 7/24 4-5 PM CST

Celebrating Our NAWIC Sisters!

Happy Birthday

01/01 Sali Harfoush
01/26 Jaylee Klempa

Welcome New Members

01/07 Abigail Sullivan
01/07 Kitzie Vander Kooi

Congratulations On Your Anniversary

01/20 Chrissie Humphrey
01/20 Hannah Humphrey
01/20 Dana Cookson
01/24 Olivia Graves
01/24 Sali Harfoush

Congratulations to Nicole Shields who has accepted the offer to become a Partner with Garver USA! We are so proud of your hard work and dedication for this major career milestone and accolade!



Preventing Slips & Falls in Winter Weather



Using Special Care When Getting In & Out of Vehicles

Try and park your vehicle in a clear area and watch where you step as you get in or out.

Avoid Carrying Items That Reduce Your Ability to See the Ground In Front of You

Whether its one big item or five small items, ask for help or take multiple trips so that you are never obstructing your sight

Scan the Path Six or More Feet in Front of You

Make sure your route ahead is clear of hazards such as rocks, clumps of snow, or branches

Walk Slowly & Take Small Steps

Walking slowly and taking small steps will help you maintain your balance.

Plan Ahead & Give Yourself Sufficient Time To Get Where Your Going

Whether walking or driving, leave your current location 5-10 minutes early in case roads or sidewalks are covered with snow and ice.

If You Do Slip, Avoid Using Your Arms to Break Your Fall

Also, if you fall backwards, tuck your chin into your chest to prevent hitting your head against the ground.

Watch Out for Black Ice While Walking

Try tapping your foot on potentially slick areas to see if they are safe to walk on. If not, find another route to take.

Use Your Vehicle for Support When Entering & Exiting

If you're parked in a potentially slick area, be sure to hold onto your car when entering and exiting so you can maintain your balance.

Wear Footwear With Slip Resistant Soles

As the name indicates, slip resistant soles lessen your chance of slipping on snow, ice, or water.

When Entering a Building, Be Sure To Wipe Your Feet

Removing as much snow and water as possible from your shoes will decrease your chances of slipping while walking around inside.



Please remember our NAWIC Endowed Scholarship at OSU

whenever you're in a giving mood. The full name of our scholarship is the

NAWIC Tulsa Chapter 76 Endowed Scholarship In Honor of Gene Harris Fund.

On your checks or online donations,
please note the fund number: 26-75750

On-line donations: <https://osugiving.com/>
please see the "Give" tab at the top right.

Mailing Address:
OSU Foundation
400 S. Monroe, Stillwater, OK 74074

Your Scholarship Committee thanks you!!

Christmas Party NAWIC Event in December—
no minutes were taken, we all had a blast!
Thank you so much for all your hard work Social
Committee!

NOTES TO THE PRESIDENT

We Value Your Feedback!

We've set up a QR code for you to easily share any comments, questions, concerns, or compliments. If you have suggestions on how we can address a concern or improve something, we'd love to hear from you. Likewise, if there are any ideas or features, you'd like to see, please let us know!

If you'd like your comment to not be anonymous, please feel free to include your name. Additionally, I'll have a box available at each meeting where you can leave messages as well.

We are committed to providing transparent communication, and each newsletter will feature updates on any concerns, questions, or compliments we've received, along with responses when appropriate.

Thank you for helping us improve!

NOTES from the Christmas Party.

Comment 1: Shoutout to the Social Committee for the great activities planned this past December! We all had a blast!



SAVE THE DATE

WIC Week



March 2-8 2025

NAWIC

The National Association of
Women in Construction

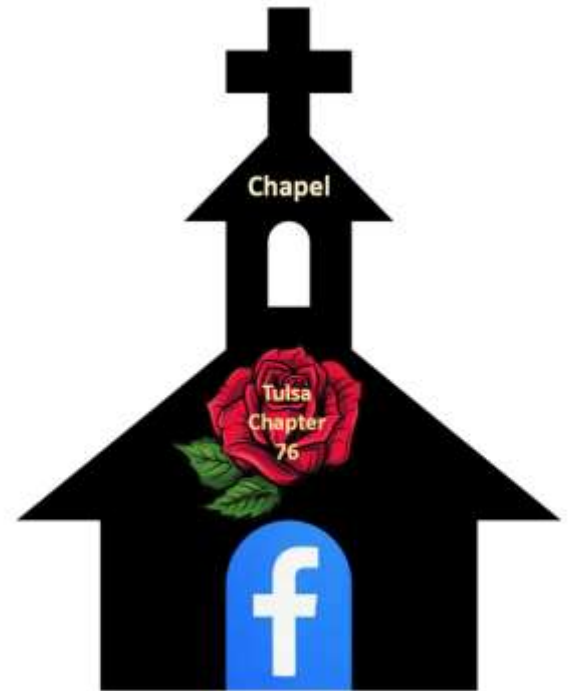
Tulsa, OK

Please know we have a prayer chapel on Facebook.

It's a private group and you may post your own prayer requests at any time or if you'd rather, please e-mail me and I'll post them for you.

This is open to all members but is strictly optional. We would ask that you read the pinned post at the top of the page.

If you'd like to join the chapel, simply request to be added. If you have any issues with that, please contact me:
jklempa@pmgtulsa.com



Thanks, Jaylee Klempa
NAWIC Membership Support

Did you know we have an email for questions?

Email: TulsaNAWIC76info@gmail.com

Check out our website on the go!

Find us at: nawictulsa.org

We have links to the national website along with current calendar events for our chapter and each newsletter at your fingertips!

FOLLOW US ON SOCIAL MEDIA:





NAWIC Meetings/ Dinners/Events Policies

A reminder of our Tulsa chapter policies concerning all of dinners and events. Please RSVP by the deadlines. We need confirmed counts for our restaurants ahead of time. If you are bringing guests, please supply their name and company.

All guests are paid for by the chapter the first time they visit, as well as new members—your first meeting is on us! After that, meetings/events will be charged unless otherwise indicated.

Members shall RSVP to attend the monthly meeting the Friday prior to the meeting (unless otherwise communicated) and will be billed for said meeting. Even if you cancel at the last minute, we need you to pay.

Our BOD has decided we need to be more vigilant. We run the risk of losing money as a chapter without this policy and we can't afford that.

We very much appreciate your understanding and your cooperation!

Julianna Guglielmo, Tulsa Chapter Treasurer julianna@colburnelect.com

At the February Membership Meeting the Membership Committee is putting together a SINGO Membership Mixer. Plan on bringing a guest to join in the fun! More info coming!

Do you have something to report? Exciting News / Your Committee / Awards
Please forward info to Jaylee Klempa by EOB 1st Friday of the month to get it in the Newsletter. jklempa@pmgtulsa.com

Membership Committee:

Words of encouragement to the members.

As we close out this year and look ahead to the next, I want to take a moment to express my gratitude to each and every one of you. Your dedication, passion, and teamwork have made this year a success, and together, we've achieved incredible milestones.

Every challenge has been an opportunity to grow, and every triumph has been a reflection of your hard work.

Looking ahead, 2025 is filled with new possibilities and exciting opportunities. May this New Year bring you personal fulfillment, professional growth, and continued success. Let's continue to support and inspire one another as we embark on this new chapter, knowing that together, we are capable of achieving even more. Wishing you all a happy, healthy, and prosperous New Year!

Paula Fennell, Chair



BLOCK KIDS CONTEST

JANUARY 23, 2025

As you already know, NAWIC Tulsa Chapter #76 will be hosting our annual Block Kids Contest on **January 23rd at Lewis and Clark Elementary, 737 S. Garnett Rd, Tulsa, OK. 8:00AM – 12:00 (approx.)**.

Several Chapter members have already signed-up to volunteer for the contest. Thank you all so much for lending your time to this event. The Block Kids Committee will be sending out an e-mail with further details.

If you are interested in volunteering but haven't yet turned in the required TPS Volunteer Profile and Background Check Questionnaire, let me know and we can try to get quick approval. Contact: joanikelly74@gmail.com

We are super excited about hosting this program at Lewis & Clark and they are beyond grateful to us for choosing them to participate – it will be amazing !!

Block Kids Committee:

Christi Wyatt-Farr - Chair

Members: Dana Cookson, Kaitlynn Henson, Joani Kelly

Congratulations to Jennifer Cearly becoming the Social Committee Chair!

Rose Recipient
NAWIC
NATIONAL ASSOCIATION OF WOMEN IN CONSTRUCTION
Tulsa



As material for the construction of our building, I pledge the agility of my hands, the ability of my mind, and the integrity of my heart.

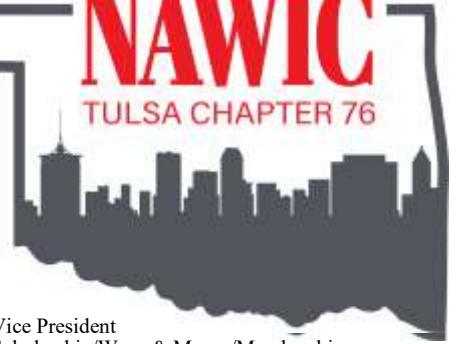
Sierra Nunez will bestow the next Red Rose.

2024-2025

BOARD/COMMITTEE

CONTACT LIST

NAWIC
TULSA CHAPTER 76



President
Finance/Strategic Planning
Dana Cookson

Email: accounting@stoutconstruction.net
Cell: 918-671-9370



Treasurer
Finance
Julianna Guglielmo

Email: julianna@colburnelect.com
Cell: 918-521-9005



Recording Secretary
Marketing
Kristi Ostler

Email: kostler@rickscottconstruction.com
Cell: 918-260-0044



Immediate Past President
Finance/Strategic Planning
Chrissie Humphrey

Email: chrissiehumphrey@stoutconstruction.net
Cell: 918-530-9183



Director
Paullei Tanner

Email: paullei.tanner@gmail.com
Cell: 405-642-4767



Director
Safety
Bailey Martin

Email: bailey.martin@crossland.com
Cell: 918-202-8769



By Laws
Scholarship Committee
Kem Hagadorn

Email: kem@davemaherinc.com
Cell: 918-809-1185



Vice President
Scholarship/Ways & Means/Membership
Paula Fennell

Email: pfennell@craftsmenresources.com
Cell: 918-271-1210



President Elect
WIC Week/PD & E
Marla Carter

Email: marla@tulsacivil.com
Cell: 918-370-4126



Corresponding Secretary

Kaitlynn Henson

Email: Kaitlynn.henson@apac.com

Cell:



Director
DE&I
Sarah Hopper

Email: sarahh@hudsonprince.com

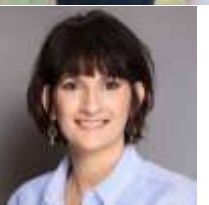
Cell: 918-277-3927



Director

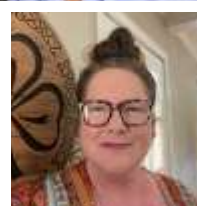
Sierra Nunez

Email: sestone93@gmail.com
Cell: 352-272-3573



Director
Ways & Means, Membership
Jaylee Klempa

Email: jklempa@pmsgtulsa.com
Cell: 918-991-9221



Parliamentarian
Block Kids
Joani Kelly

Email: joanikelly74@gmail.com
Cell: 918-640-7081