



HAIR REMOVED, BEAUTY REVEALED.

Endless Possibilities – Most Hair & Skin
Types Appropriate for Treatment

Diode Laser Technology

- 810nm

Power & Speed

- 1800 watts
- 5-200ms
- 10Hz
- 2.9cm² Spot Size





Fast, safe, painless for all Skin types.

LUVO is suitable to treat hair in all areas of the body and face, both the smallest and most delicate (lips, bikini area) as well as the largest (legs, back). It is suitable for all skin types in a high degree accuracy parameter adjustment.





No disposables

LUVVO uses just clear white transparent US Gel.

A thick type better cope with the handpiece during operation.





Emitting Light Energy

Very homogeneous beam profile

Flat Top - rectangular profile - same fluence throughout the spot
(no “hot” spot)

No energy loss

Fast Action

On time: 10 min

Off time: 5 min

Optimizing treatment maneuvers

Thanks to the ergonomic handpiece design and light-weight all treatments are performed in total comfort and with no difficulties especially when patients are many on daily basis. This make the learning curve very fast.

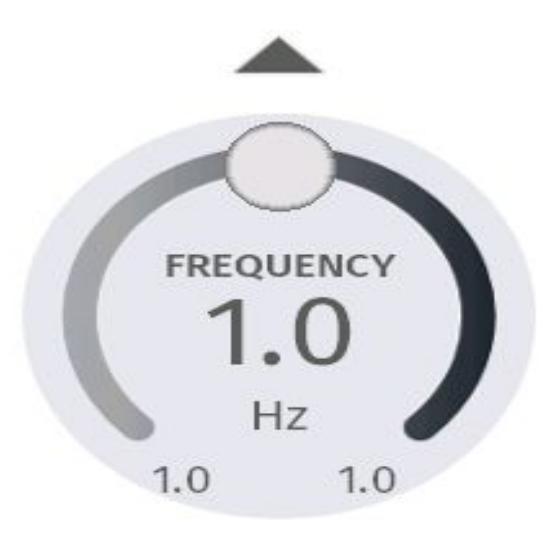
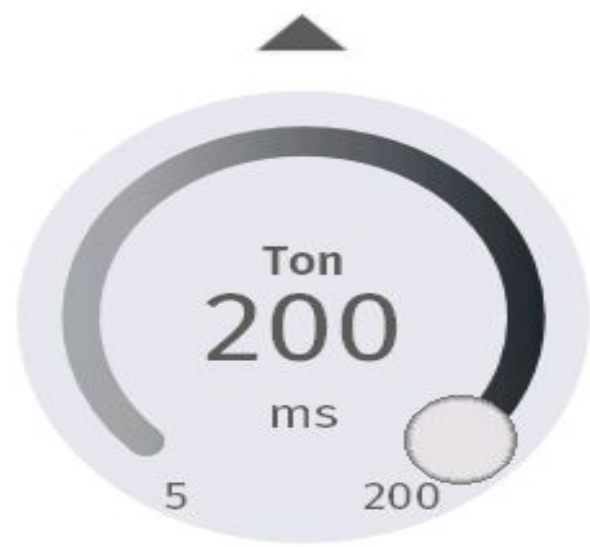




Your best partner for smart hair removal

1. Ergonomic design of the handpiece
2. Wide area Vs the majority of Diode lasers handpieces
3. Great treatment area visibility
4. Anti fatigue support for treatment comfort
5. Adjustable cooling temp for optimal results
6. Stamping & motion techniques options





OFF



START



0/500J



EMISSION

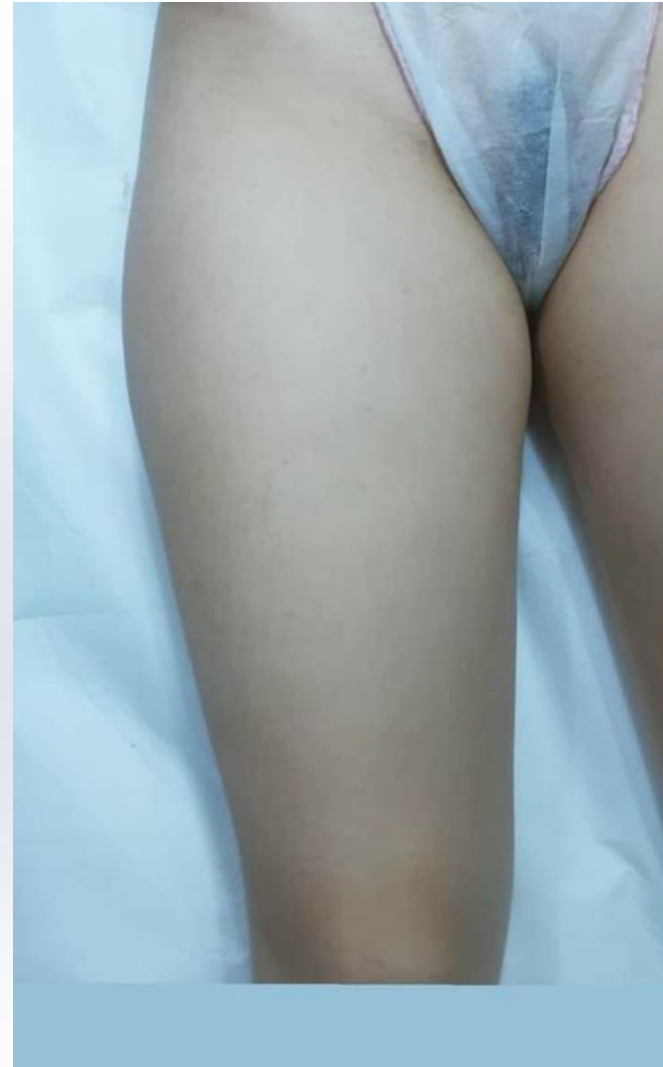
4
Total Pulses













Peak Power	1900W
Laser Class (EN 60825-1)	4
Wavelength(s)	809±6 nm
Mode (monomodal, multimodal)	Multimodal
Beam geometry (system output)	Rectangular
Maximum laser output	Handpiece output
	2.9J – 87J /max 174W
Pulse energy/average power	Adaptive (see Operator's manual)
	± 20%
	£ 20%
Fluencies (J/cm2)	Fluence
(handpiece output)	[Energy]
12x24mm handpiece	1.0-30 J\cm2 (2.9-87J)

a.