

# GABRIEL FAIN ARCHITECTS

SAMPLE PROJECTS



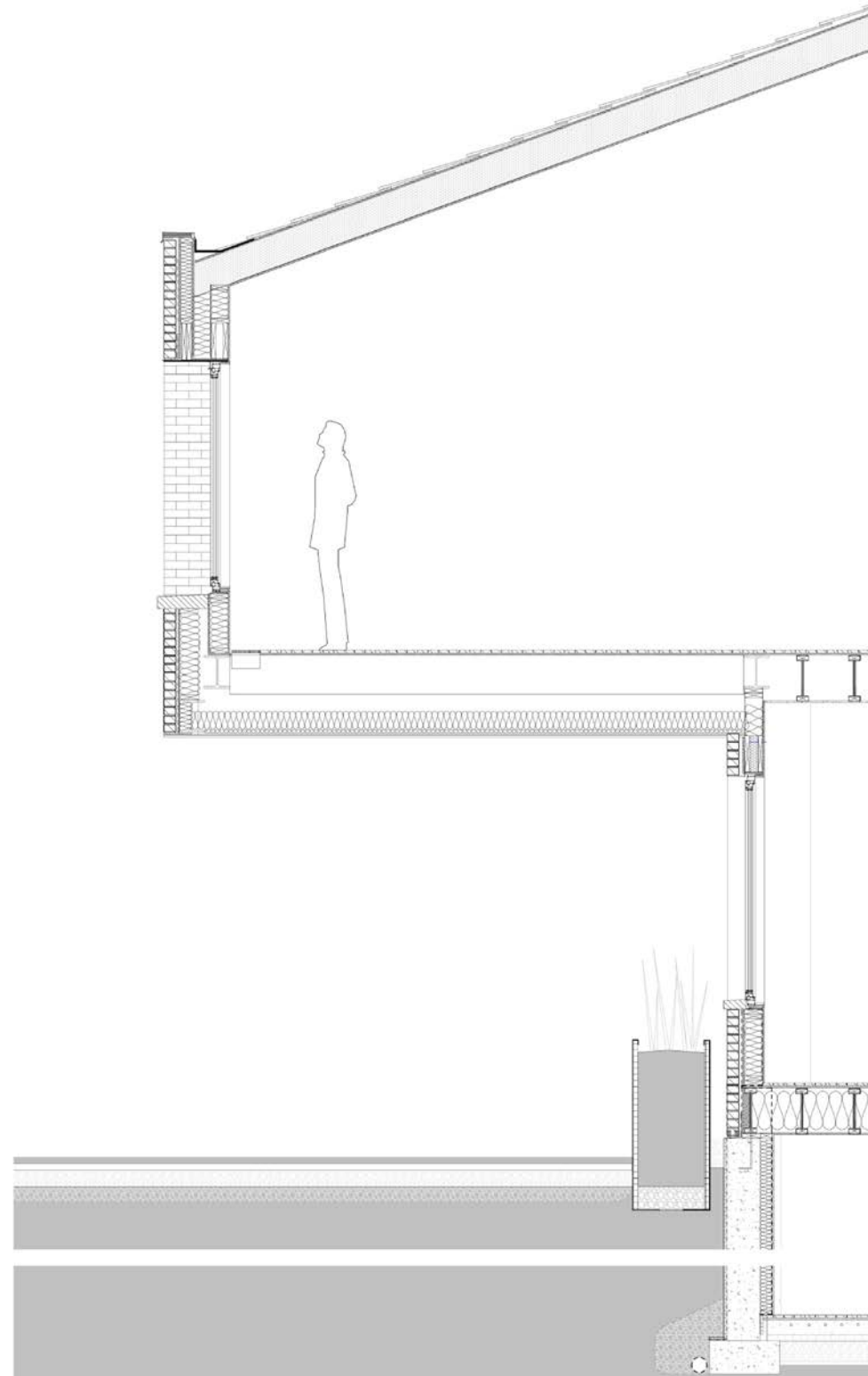
39 Spruce Street - Cabbagetown Toronto  
2017







GABRIEL  
FAIN  
ARCHITECTS



## Triple Take

### Brick House

by Gabriel Fain Architects

Made-in-Canada masonry defies gravity in the impressive 4.5-metre-long upper-storey cantilever that fronts this private residence in Davisville, designed by architect Gabriel Fain. A thoughtful solution for preserving the next-door neighbour's uninhibited view of the adjacent park, the form of this structural feat is cross-functional. Its impressive size maximizes interior floor area, creates space for a carport and draws the eye up, up and away from the main-floor living space. Deeply punched windows and concealed downspouts, which add visual weight to the floating brick mass, are not the only illusions at play. When viewed from street level, it's hard to believe this apparently flat-roofed building boasts 4.5-metre-tall sloped ceilings with a skylight. The secret? A hipped roof set back from the building's edge – just one of the features that make this home bear close resemblance to the neighbouring 1920s brick residences. A few subtle mirages carry the design forward into the 21st century. [GABRIELFAIN.COM](http://GABRIELFAIN.COM)



→ Thanks to the hipped roof, the upper interior spaces, including this south-facing bedroom, are bright and airy.

↘ Two steel beams extend the house with a 4.5-metre-long cantilever, giving the Davisville Village home additional interior space, a shaded entrance and a carport.

↓ Though it appears to be flat when seen from the front, the house has a traditional hipped roof set back behind a parapet.



64



[DESIGNLINESMAGAZINE.COM](http://DESIGNLINESMAGAZINE.COM)

## Triple Take



### Thornwood House

by KPMB Architects

Brooding blacks play foil to verdant ravine greens in this linear, BILD Award-winning home by KPMB Architects and SevernWoods Construction. Terracotta cladding and Norman-style brick in midnight hues reference the masonry-based heritage construction familiar to the Rosedale subdivision. The exterior materials and controlled use of windows in these neighbouring buildings were additional points of inspiration, but unlike its more traditional counterparts, this home maintains a bright and airy atmosphere. Brick is used within and without to connect the interior space – which boasts treetop views and spacious corridors – to the great outdoors. Large expanses of glass are set behind perforated steel or terracotta louvers (dubbed "baguettes"), keeping domestic activities out of view while allowing light to flow in. Nestled in foliage, the home honours the client's fascination with a ratio commonly found in nature: phi. The steel-screen patterning and a curved wall of custom-radius bricks are both subtle nods to this number's mathematical quirks. [KPMB.COM](http://KPMB.COM)

BRICK HOUSE PHOTOS BY DYLAN TUDHOPE; THORNWOOD HOUSE PHOTOS BY ANDREW WILLIAMS

↑ Beyond the street-facing blackened steel screen – its pattern of perforations based on phi – is the family study. The screen admits daylight, but provides privacy from the entry walkway.

← Situated on a wedge-shaped lot, the house is clad in ironspot brick on the first level, while terracotta accents address the scale, opacity and materiality of its historic streetscape.

↓ Upstairs, the terracotta louvers control light, solar heat gain and views to the most private part of the house.



65









GABRIEL  
FAIN  
ARCHITECTS





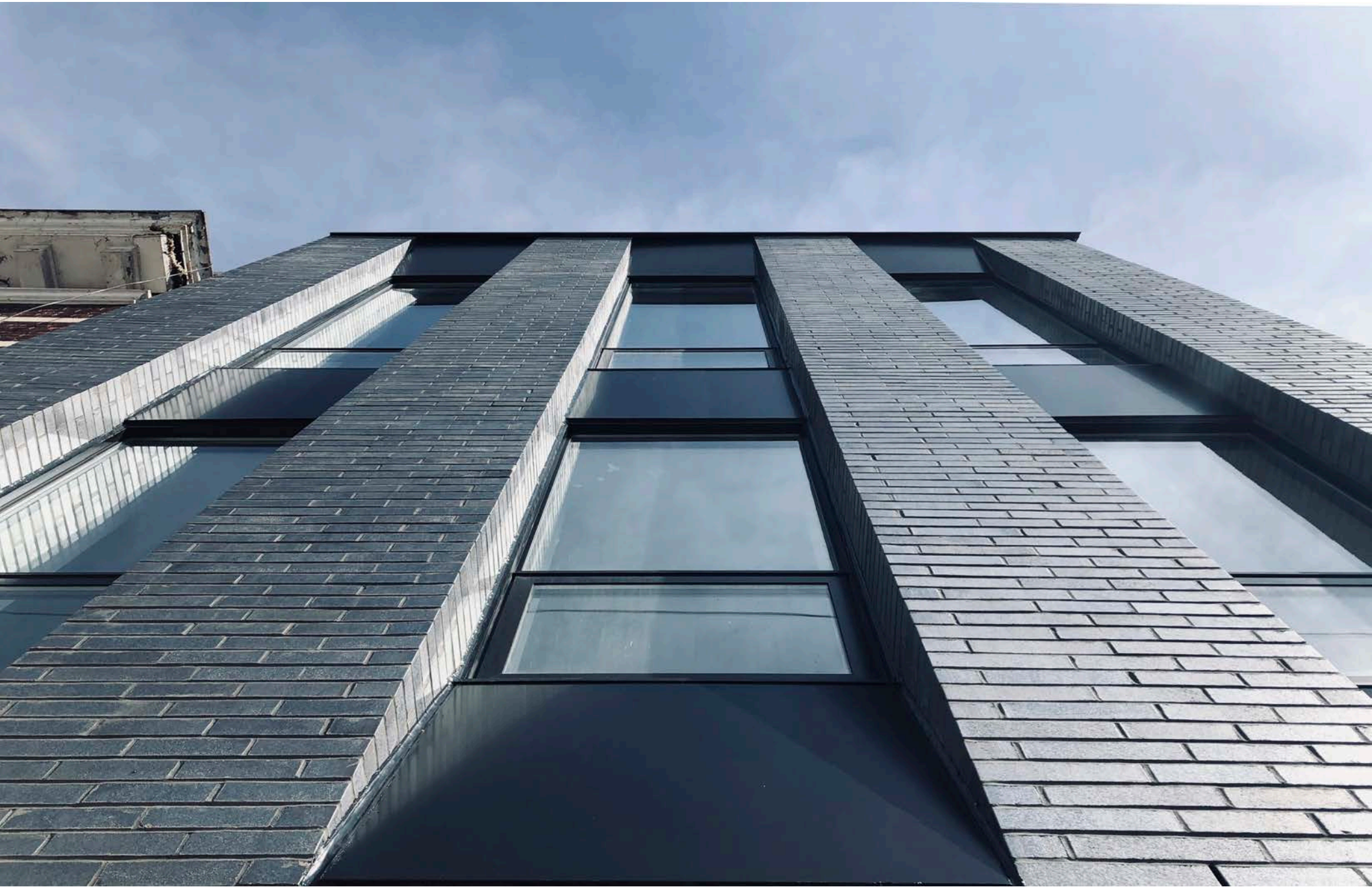






GABRIEL  
FAIN  
ARCHITECTS





891 Broadview Avenue - Danforth Toronto  
Completed 2020

GABRIEL  
FAIN  
ARCHITECTS





GABRIEL  
FAIN  
ARCHITECTS



GABRIEL  
FAIN  
ARCHITECTS





GABRIEL  
FAIN  
ARCHITECTS



GABRIEL  
FAIN  
ARCHITECTS



20 Sammon Avenue - East York Toronto  
Construction with JPM







GABRIEL  
FAIN  
ARCHITECTS

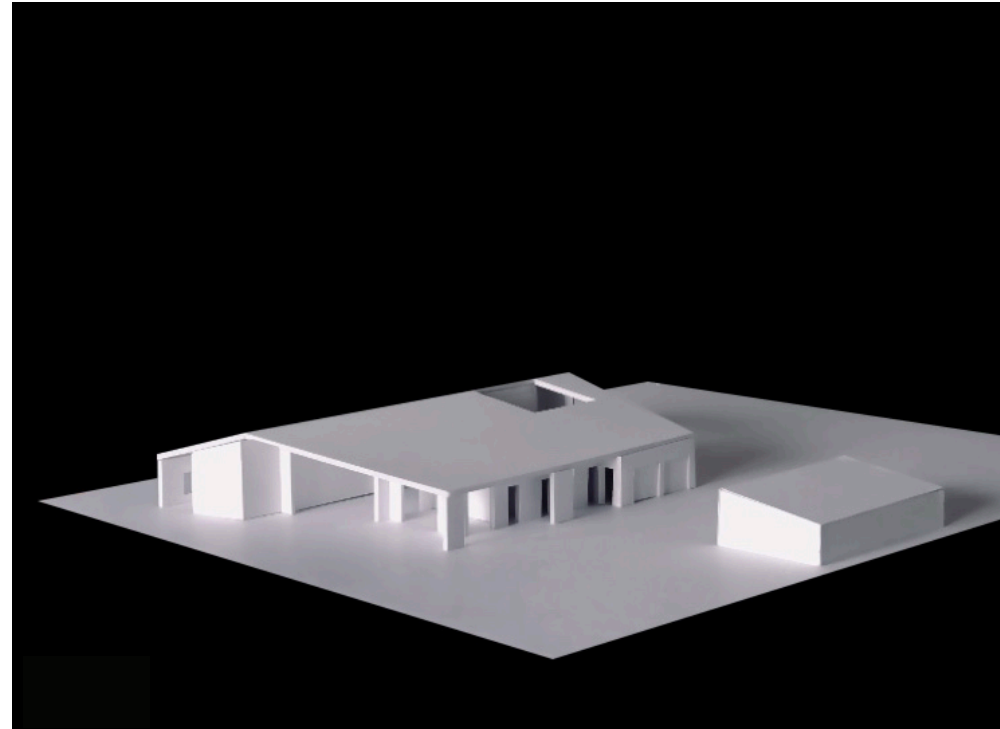
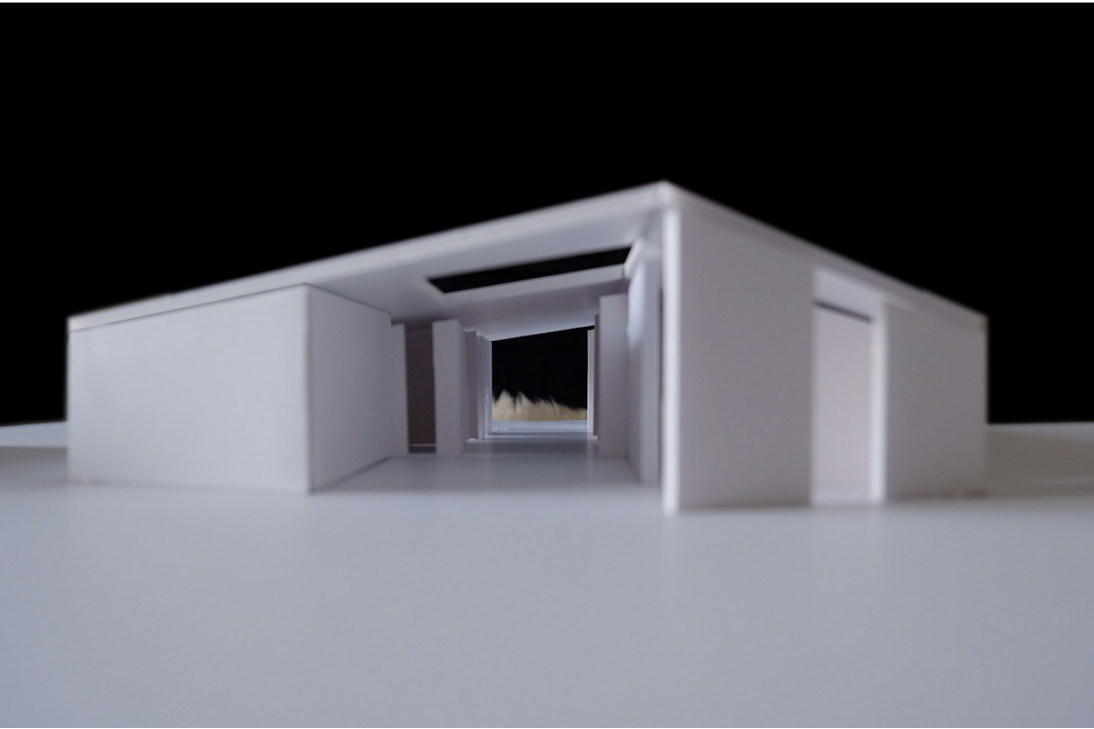






Uxbridge House - In Progress

GABRIEL  
FAIN  
ARCHITECTS











TERESA'S GREEN

No. 236



GREEN BLUE

No. 84



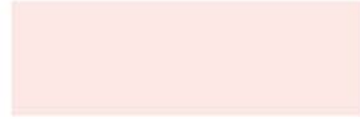
DIX BLUE

No. 82



VARDO

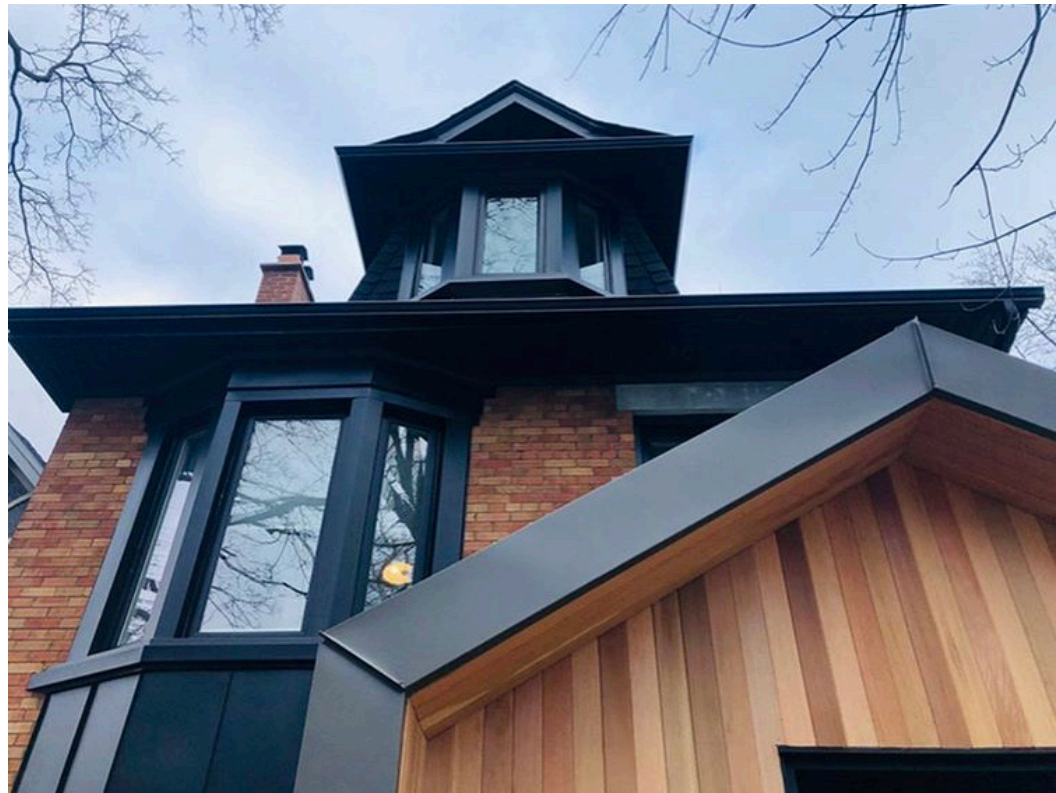
No. 288



Middleton Pink







87 Indian Rd - Heritage Restoration & Addition  
Completed 2019

GABRIEL  
FAIN  
ARCHITECTS





1067 Shaw St - Laneway House  
In Progress