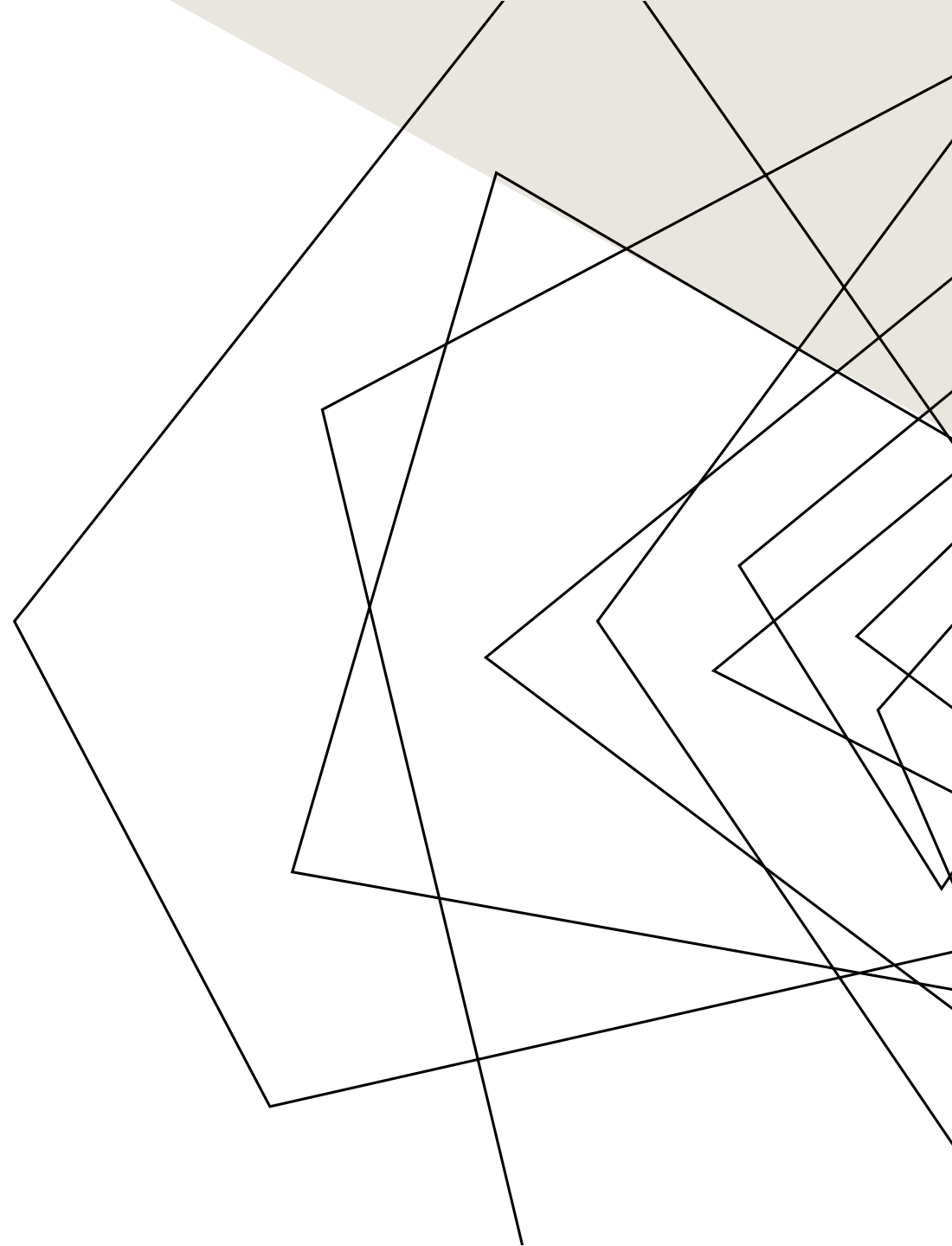




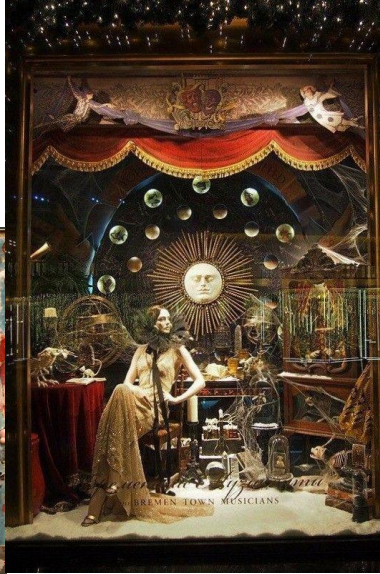
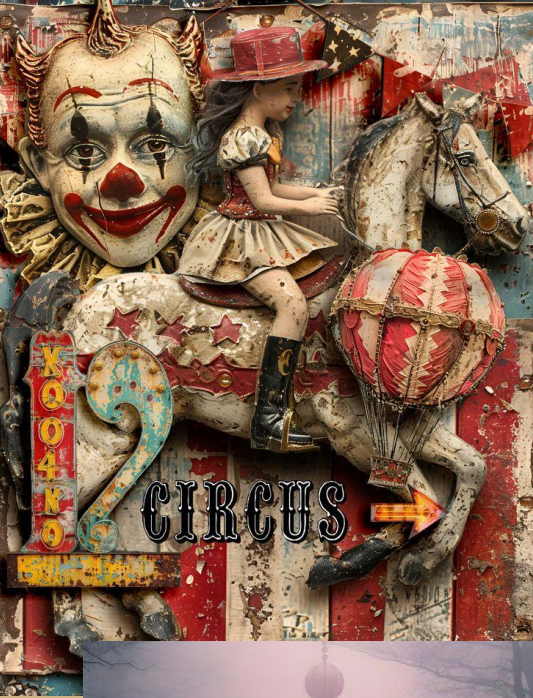
CHECK, PLEASE  
WORLD CONCEPT

# CONCEPT STATEMENT

As our protagonists rotate through possible matches, they also rotate around the ferris wheel-inspired scenery. Realism-based set pieces and costuming root the characters in real life, allowing audiences to connect and invest in their stories. Visual and auditory elements surrounding the characters grow to accentuate the absurdity of the situations. Spectacle allows for exaggeration of absurdity and comedic elements, while storytelling remains rooted in the relatability of the experiences of the characters.



# EVOCATIVE IMAGERY



33200F

CD512D

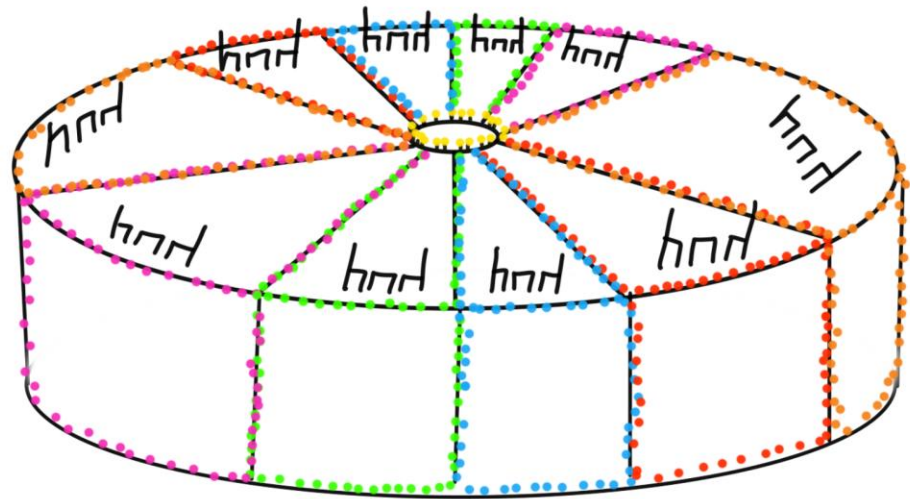
EFCB70

B80A03

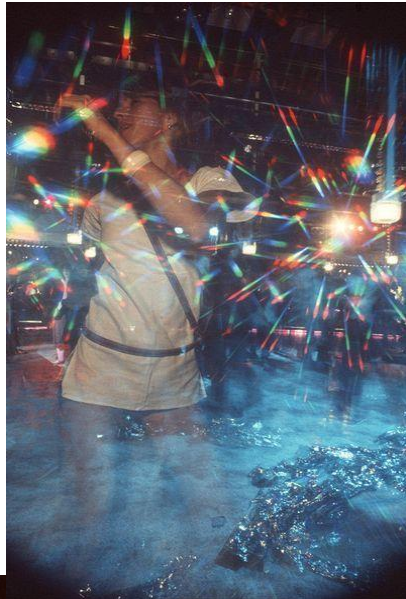
CFB481

color

SCENIC



# LIGHTING

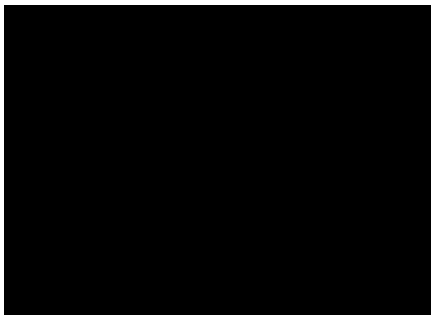
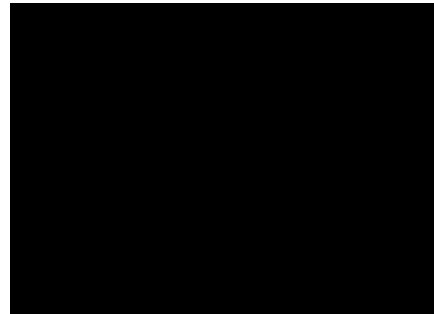
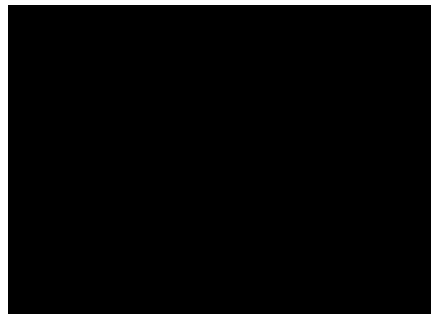
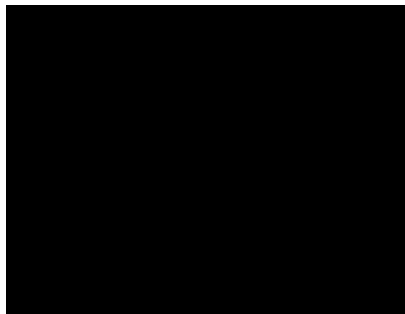


# COSTUMES



# SOUND

Development from casual dinner-date to carnival lunacy, until our protagonists finally meet each other.



"A short moment of instant chemistry."

