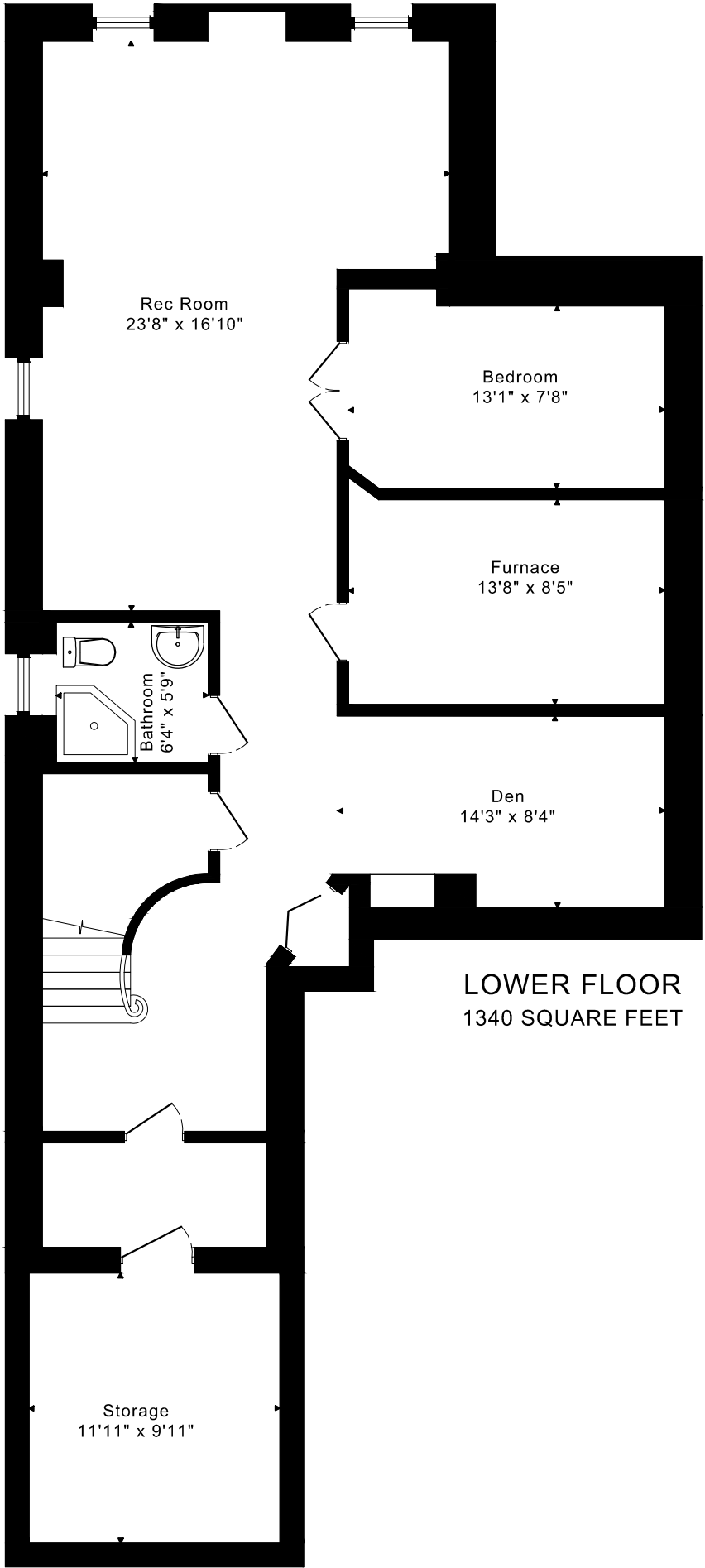
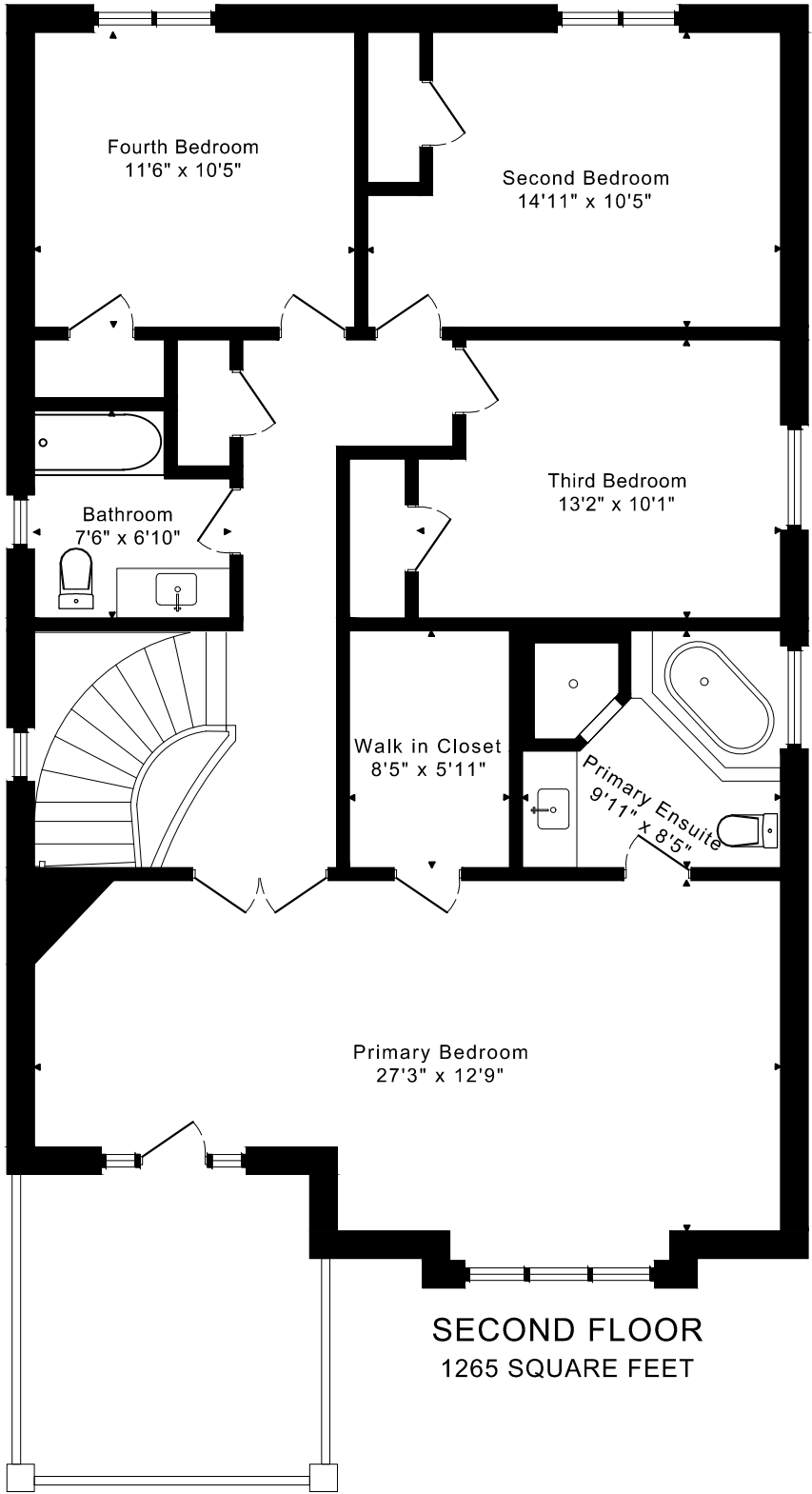
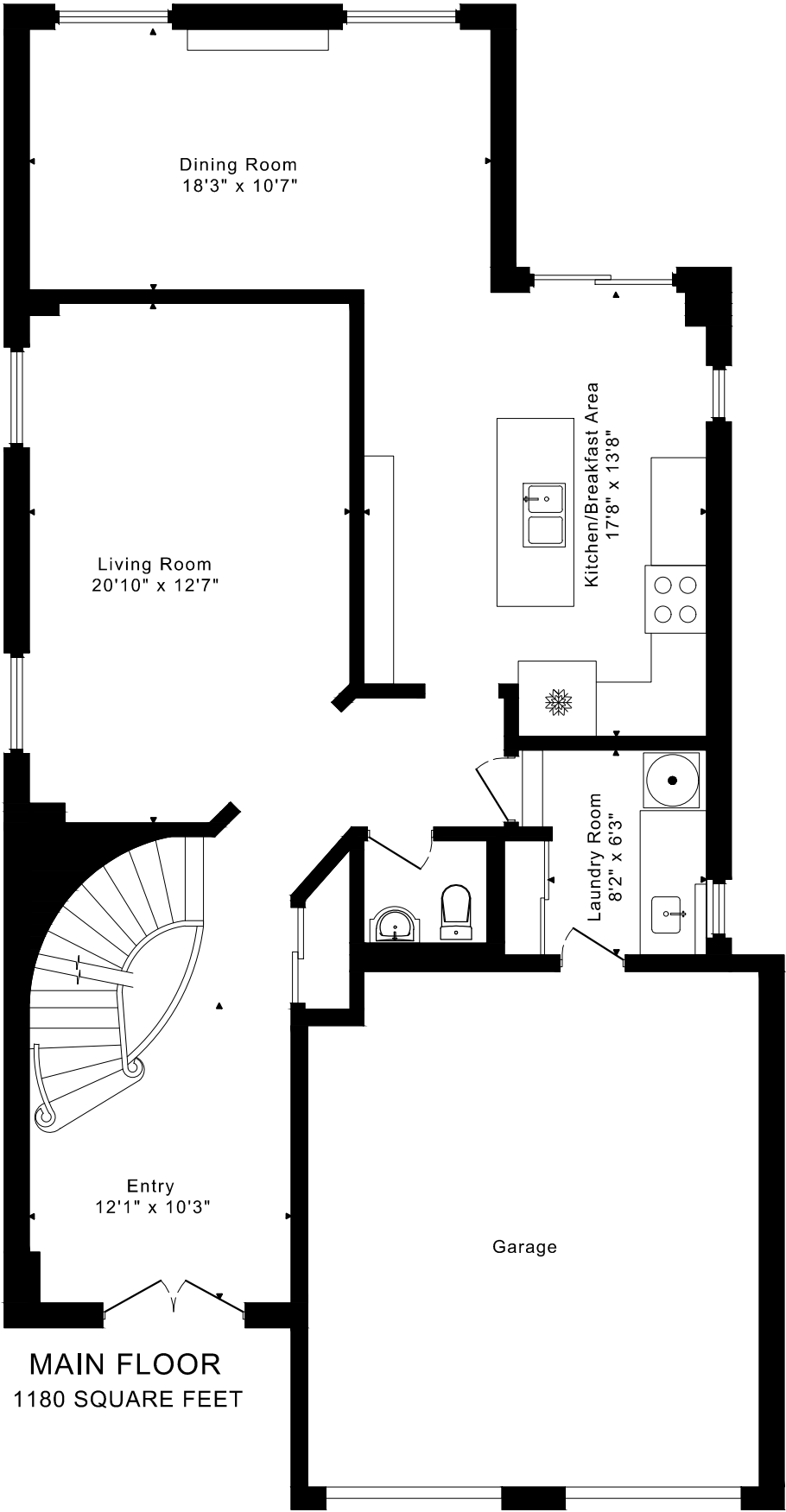


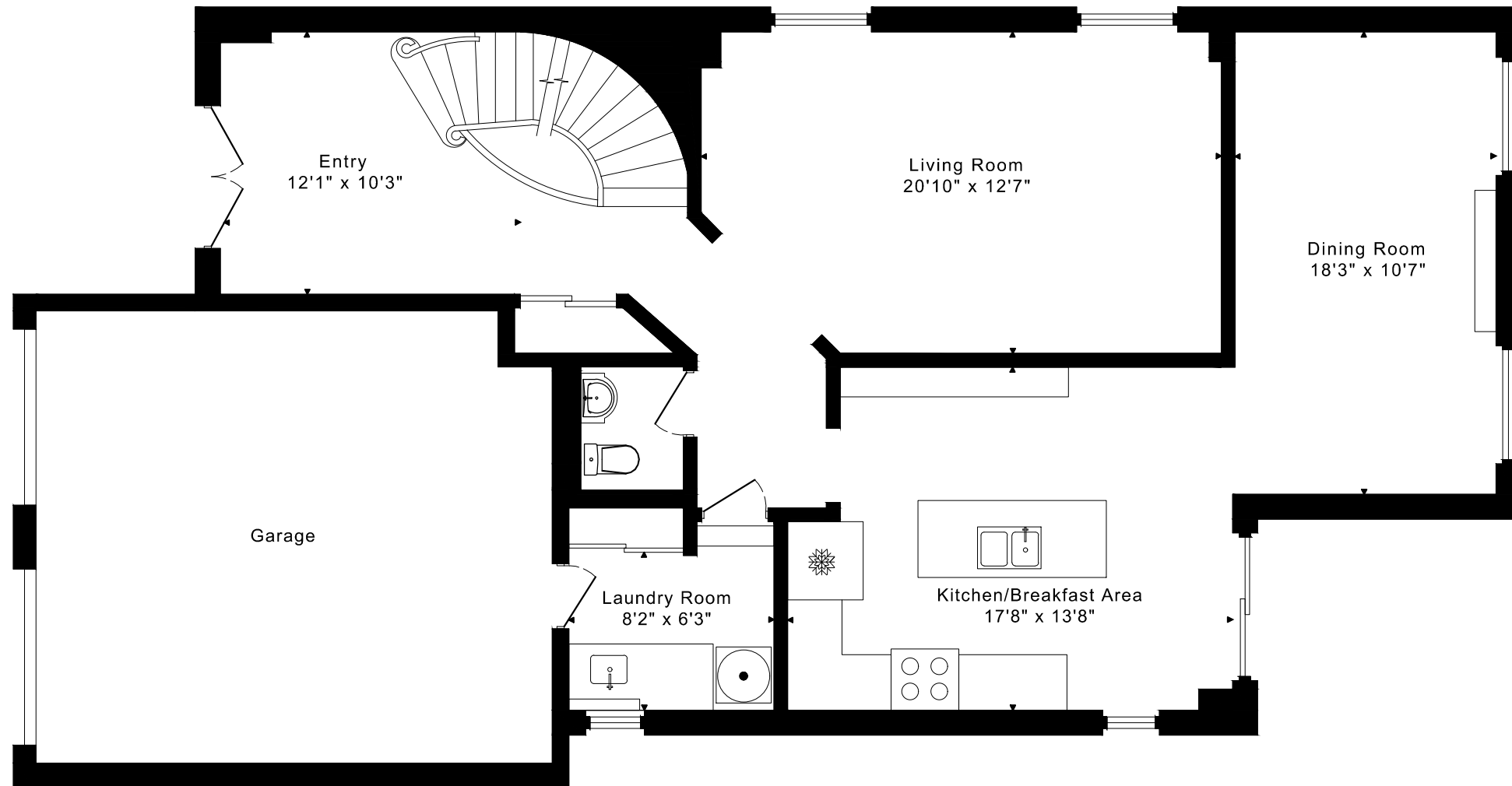
164 COOKE CRESCENT
FLOOR PLANS



2445 sq ft + 1340 sq ft
BELOW GRADE

164 COOKE CRESCENT FLOOR PLANS

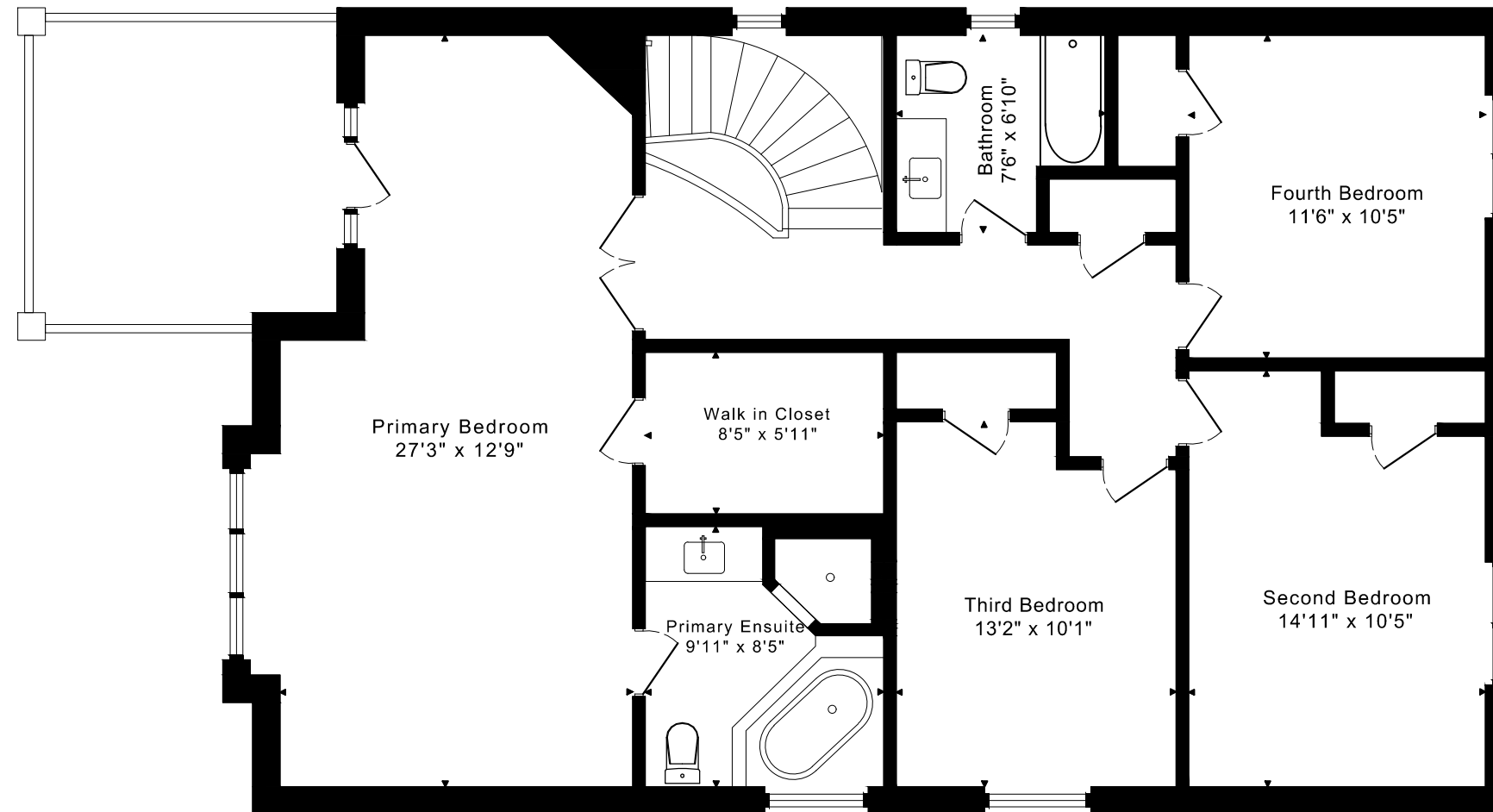
MAIN FLOOR 1180 SQUARE FEET



164 COOKE CRESCENT

FLOOR PLANS

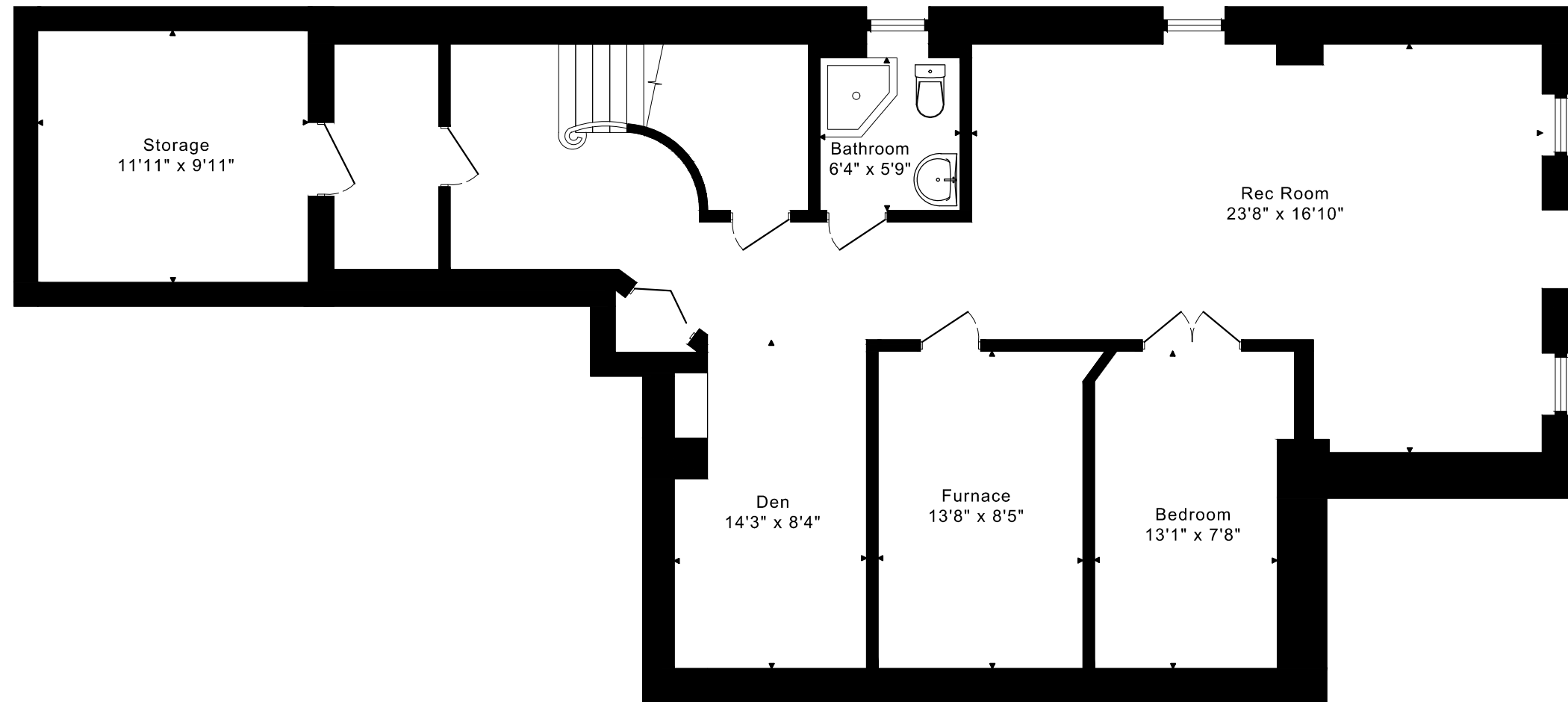
SECOND FLOOR 1265 SQUARE FEET



164 COOKE CRESCENT

FLOOR PLANS

LOWER FLOOR 1340 SQUARE FEET



1547 ALEXANDRA BVLD ROOM MEASUREMENTS

Floor	Room	Imperial						Metric [m]		
		Length		Width		Height		Length	Width	Height
		Feet	Inches	Feet	Inches	Feet	Inches			
Second	Primary Bedroom	27	3	12	9	8	0	8,31	3,89	2,44
	Primary Ensuite	9	11	8	5	8	0	3,02	2,57	2,44
	Walk in Closet	8	5	5	11	8	0	2,57	1,80	2,44
	Second Bedroom	14	11	10	5	8	0	4,55	3,18	2,44
	Third Bedroom	13	2	10	1	8	0	4,01	3,07	2,44
	Fourth Bedroom	11	6	10	5	8	0	3,51	3,18	2,44
	Bathroom	7	6	6	10	8	0	2,29	2,08	2,44
Main	Entry	12	1	10	3	9	1	3,68	3,12	2,77
	Living Room	20	10	12	7	9	1	6,35	3,84	2,77
	Dining Room	18	3	10	7	11	4	5,56	3,23	3,45
	Kitchen/Breakfast Area	17	8	13	8	9	1	5,38	4,17	2,77
	Laundry Room	8	2	6	3	9	1	2,49	1,91	2,77
Lower	Rec Room	23	8	16	10	7	6	7,21	5,13	2,29
	Den	14	3	8	4	6	5	4,34	2,54	1,96
	Bedroom	13	1	7	8	6	8	3,99	2,34	2,03
	Furnace	13	8	8	5	6	8	4,17	2,57	2,03
	Bathroom	6	4	5	9	6	8	1,93	1,75	2,03
	Storage	11	11	9	11	6	8	3,63	3,02	2,03

The following is a disclaimer regarding the approximate nature of dimensions and floor areas listed in this document:

Disclaimer:

The dimensions and floor areas listed in this document are provided as an estimate only and are intended to be used for illustration purposes only. These measurements are not necessarily meant to be a perfect representation of the actual space.

Notes regarding measurement methods and accuracy:

The utilization of laser measurement technology during the 3D model capturing process at the location provides an accurate representation of floor plans, with a typical margin of error of 3-5%. For the most accurate and official measurement data, it is advised to consult official documents such as MPAC records, builder's pre-construction plans, or data from certified measurement companies.

Exterior wall thickness is included in the calculation of the overall square footage and is considered as a component of the footprint. The wall thickness measurement is obtained onsite whenever possible, or estimated in the event where obtaining onsite measurements is not possible, such as in the case of condominium buildings where wall thickness may vary throughout the building.