

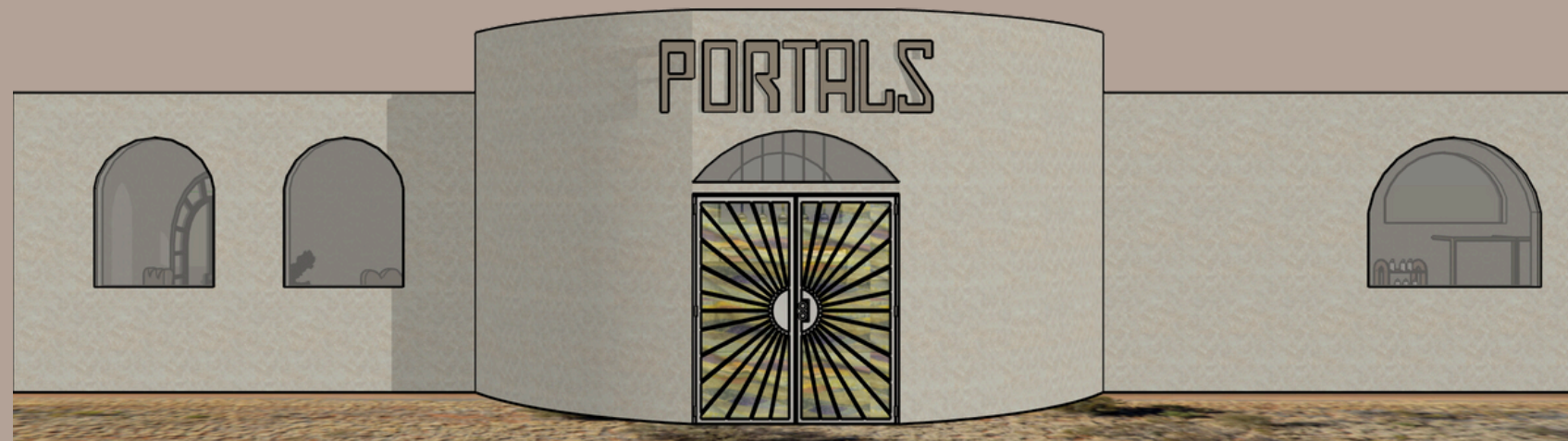


PORTALS

WELLNESS RETREAT CENTER

TALIA KLEIN

2024

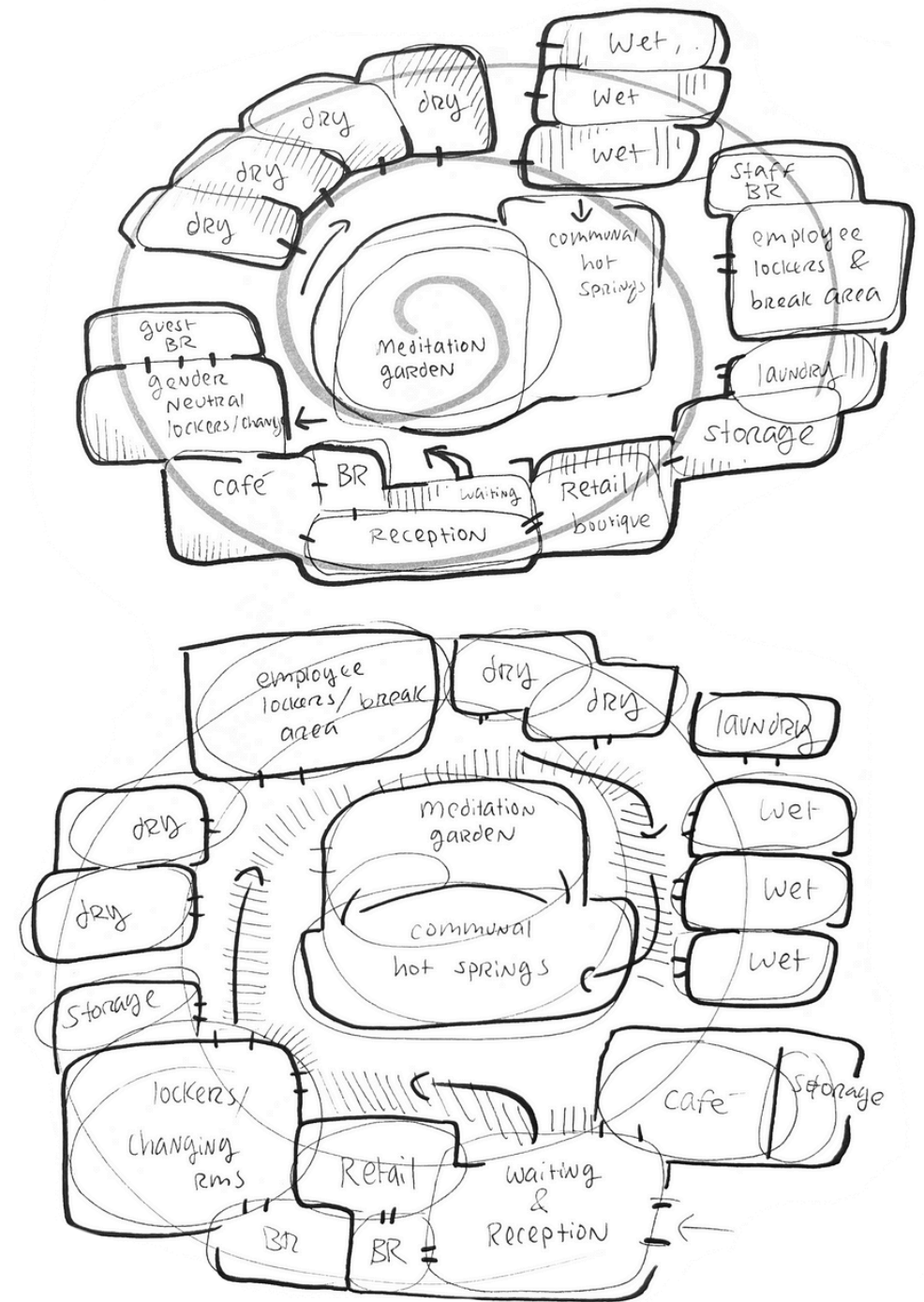
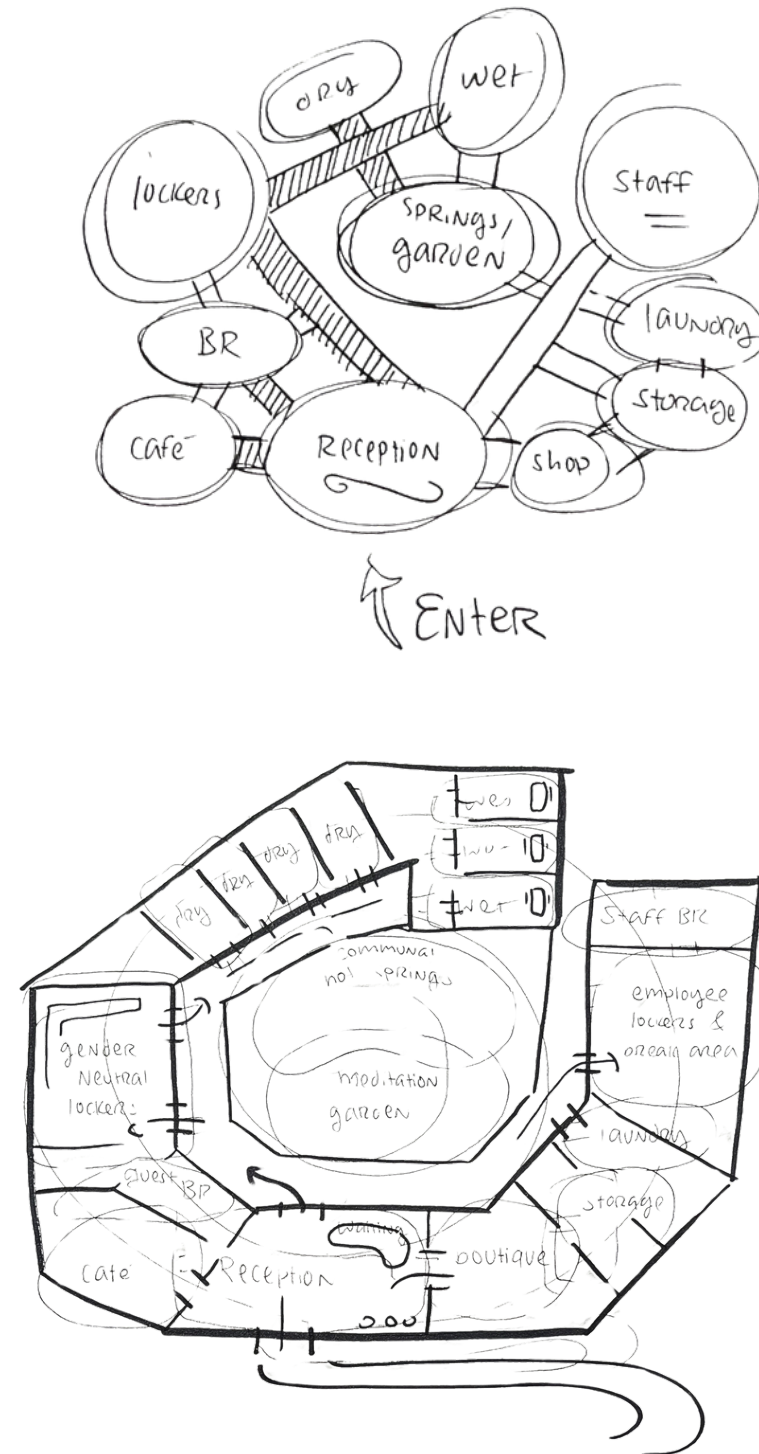


GREAT BASIN DESERT, NEVADA

DESIGN PROGRAMMING

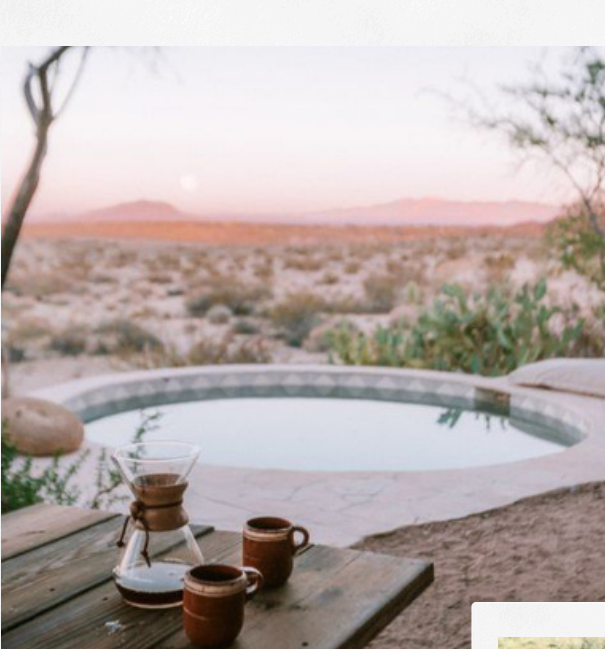
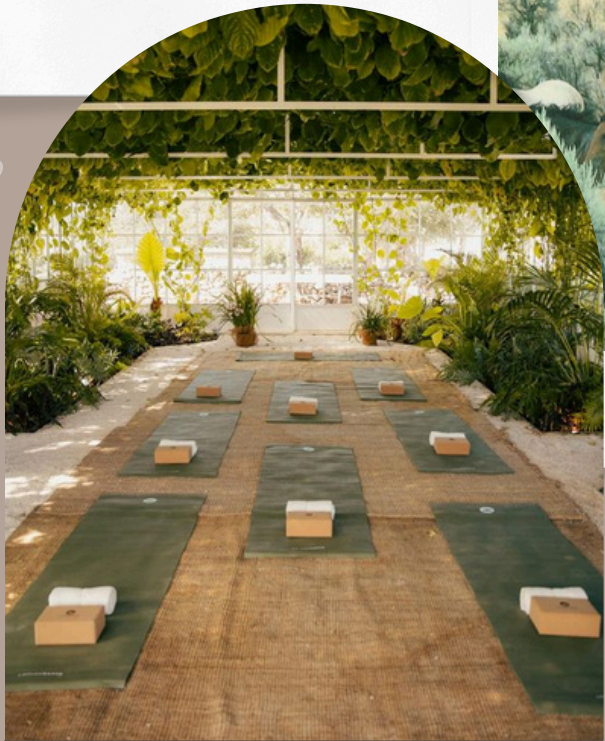
process diagrams & design statement

NESTLED IN THE HEART OF THE GREAT BASIN DESERT, IS THE REMOTE WELLNESS AND MOVEMENT CENTER: *PORTALS*. THIS DESTINATION SPA WILL SERVE AS A "PORTAL" TO WELL-BEING, COMMUNITY, AND CREATIVITY WHICH CALLS ADULTS TO RELEASE, UNWIND, AND RECENTER. THE INVITATION OF THE DESERT SETTING IS FOR GUESTS TO STEP OUT OF THEIR ORDINARY ROUTINES, TO VISIT A PLACE REMOVED IN ORDER TO BREAK OUT OF REGULAR PATTERNS. IT OFFERS SERENITY AND BOUNDLESS NATURE TO THOSE WHO ARE WILLING TO GO OUT OF THEIR WAY TO SEEK IT. THIS IS A PLACE FOR THE DREAMERS, THOSE WHO SEEK A WELLNESS EXPERIENCE THAT GOES BEYOND THE BODY. IN IMMERSING THEMSELVES HERE, GUESTS WILL FIND CONNECTION WITH LIKE-MINDED PEOPLE THROUGH MEANINGFULLY CURATED SPACES AND EXPERIENCE. FROM THE STAFF TO THE AMENITIES PROVIDED, ALL ASPECTS OF THE SPACE ENCOMPASS THOUGHTFUL CARE.

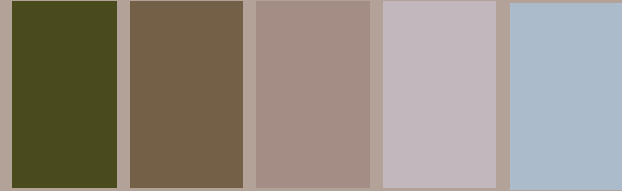


CONCEPT BOARD

arched entries



neutral and desert tones

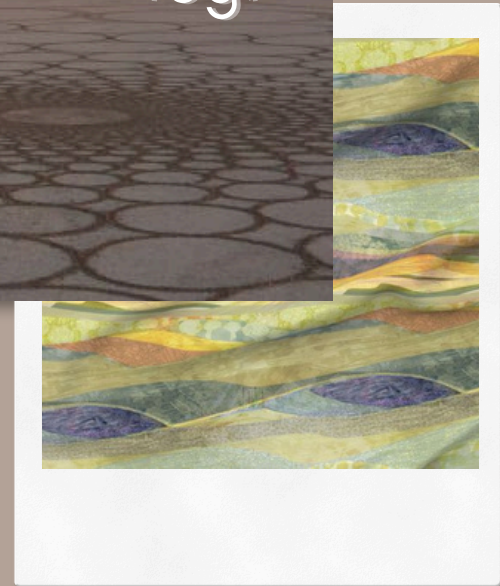


spaciousness



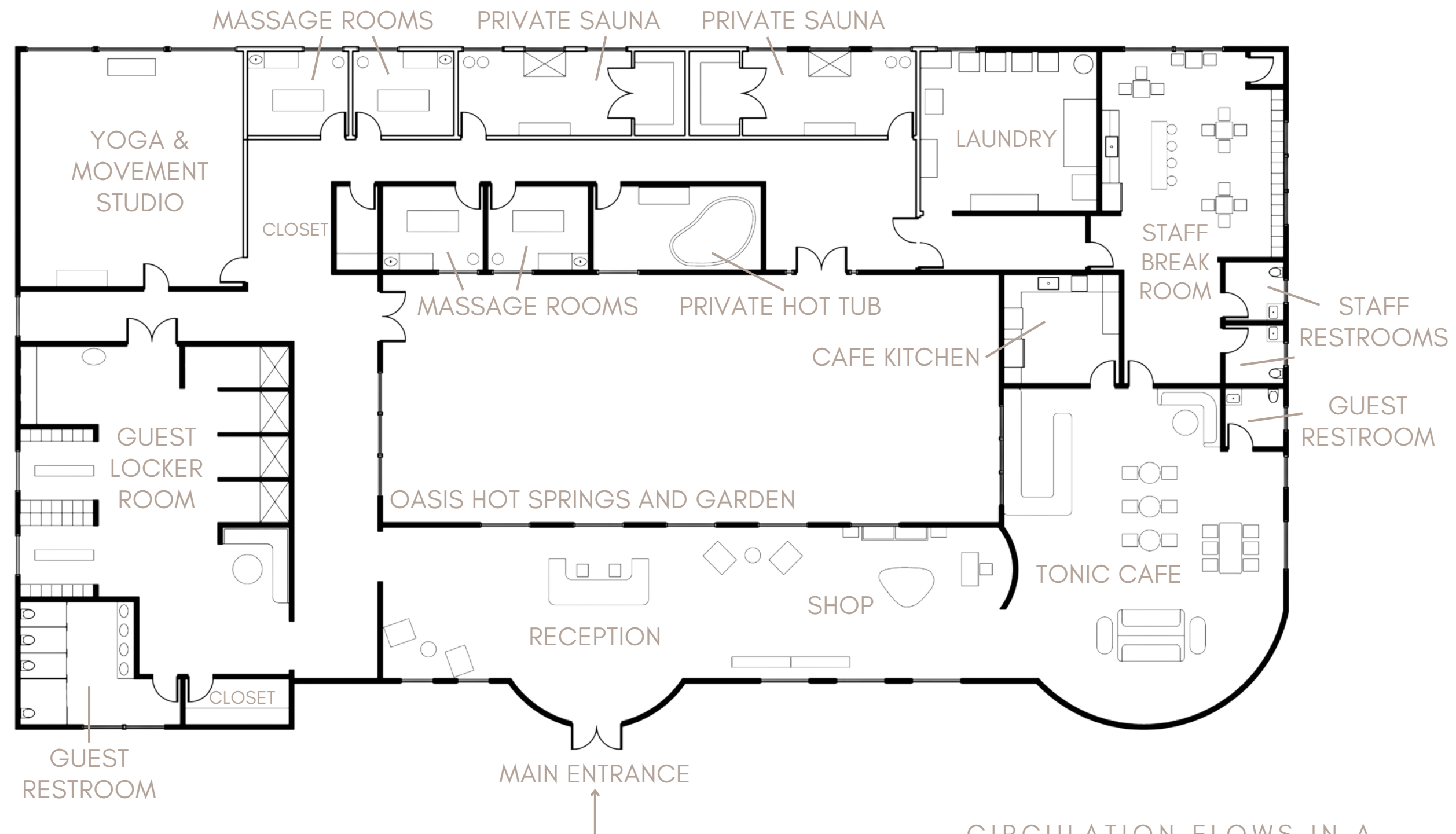
flowing circulation

integration of nature



FLOOR PLAN

PRIMARY AREAS & FURNITURE LAYOUT

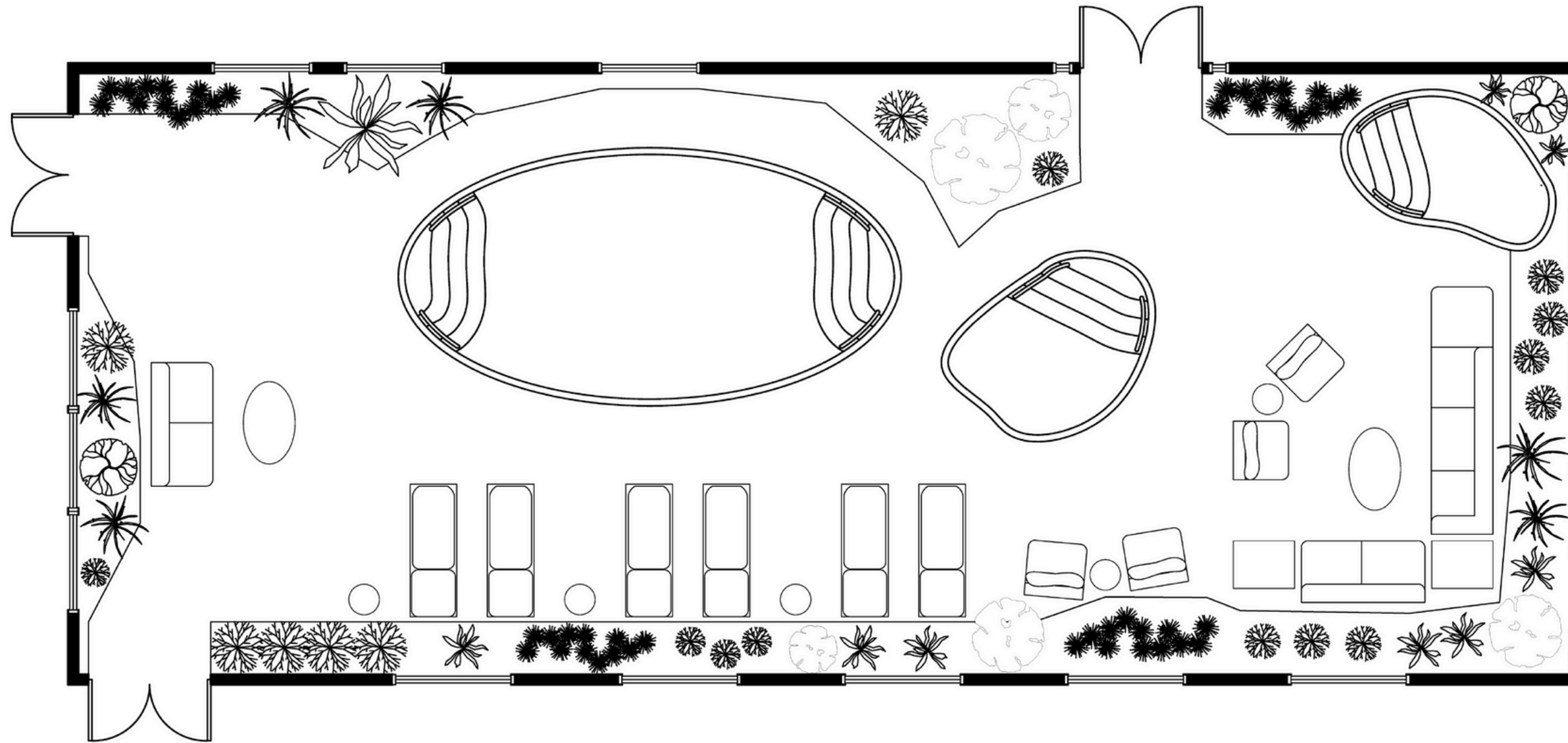


CIRCULATION FLOWS IN A
CLOCKWISE, SPIRAL SHAPE
THROUGH THE FACILITY, ENSURING
EASEFUL MOVEMENT FOR GUESTS

CENTRAL GARDEN PLAN

OASIS HOT SPRINGS AND GARDEN

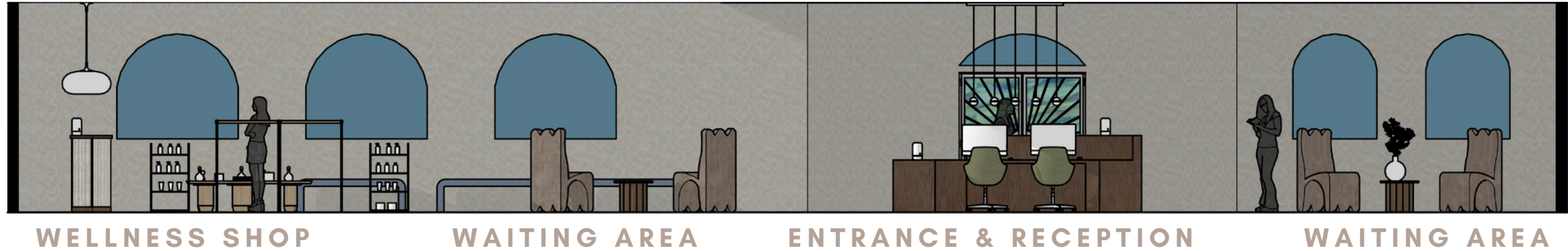
IN OCCUPYING COMMUNAL BATHING SPACE, GUESTS ARE INVITED TO ENJOY THE SERENITY OF NATIVE DESERT FLORA ALONG WITH THE SOOTHING WARM WATER POOLS.



THE GREAT BASIN DESERT IS HOME TO A NUMBER OF NATURALLY OCCURING HOT SPRINGS. PORTALS TAKES ADVANTAGE OF THIS NATURAL RESOURCE BY CIRCULATING IT INTO OUR OASIS POOLS. STUDIES SHOW THAT EVEN A SHORT BATH IN HOT MINERAL WATER HAS A RELAXING EFFECT ON THE HUMAN NERVOUS SYSTEM (MAEDA, 2021).

RECEPTION AND SHOP

elevations, 3D views



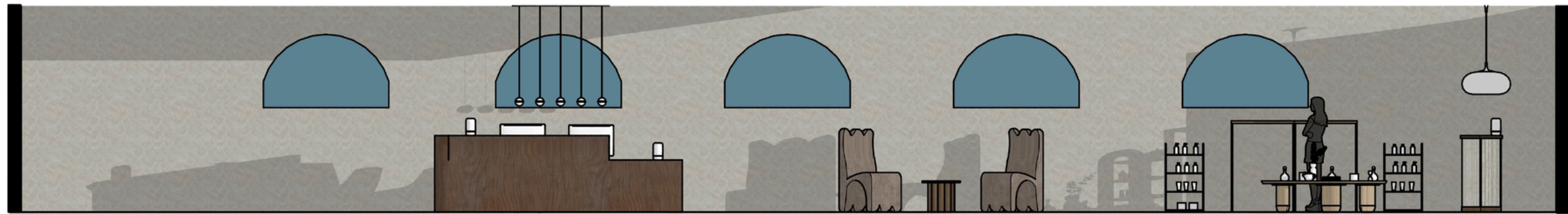
STAINED GLASS ENTRANCE DOORS WELCOME GUESTS INTO A WARM AND SPACIOUS RECEPTION AREA. A TWO-PERSON RECEPTION DESK LIES IMMEDIATELY AHEAD TO CHECK-IN VISITORS AND DIRECT THEM THROUGH THE FACILITY.

RECEPTIONISTS, AS WITH ALL PORTALS STAFF, ARE TRAINED TO FACILITATE INTERACTIONS WITH AN EMPHASIS ON SERVICE. RESEARCH IN HOSPITALITY DEMONSTRATES THAT THIS APPROACH RESULTS IN MORE SATISFIED CUSTOMERS (NORDHORN, 2019), THUS THE SPACE IS BUILT TO PROMOTE THESE INTERACTIONS

GUESTS CAN TRAVEL FROM THIS ENTRY SPACE DIRECTLY TOWARD THE LOCKER ROOMS, YOGA STUDIO, AND TREATMENTS ROOMS.

RECEPTION AND SHOP

elevations, 3D views



RECEPTION DESK

WAITING AREA

WELLNESS SHOP

BESIDE THE RECEPTION DESK AND WAITING AREA LIES PORTALS' WELLNESS SHOP. OFFERINGS INCLUDE SOAPS, LOTIONS, CANDLES, AND SCULPTURES CREATED BY LOCAL CRAFTSPEOPLE. WE AIM TO BUILD COMMUNITY BY SUPPORTING ARTISANS IN THE SURROUNDING AREA.

CUSTOM-MADE "ASTER CHAIRS" ARE ALSO FEATURED WITHIN THE RECEPTION, SHOP AND WAITING AREAS



THE ASTER CHAIR

custom furniture feature elevation, 3D views



INSPIRED BY THE TRIDENT-LIKE CURVES OF THE ENDEMIC BIG SAGEBRUSH, *ARTEMISIA TRIDENTATA*, THE ASTER CHAIR PROVIDES SUPPORTIVE COMFORT AND DESERT STYLE TO PORTALS' RECEPTION WAITING AREAS. CAST CONCRETE CONSTRUCTION GIVES THE CHAIR BOTH STABILITY AS WELL AS THERMAL CAPABILITY TO STAY COOL ON HOT SUMMER DAYS.



PRELIMINARY SKETCHES



WAITING AREA ELEVATION DETAIL

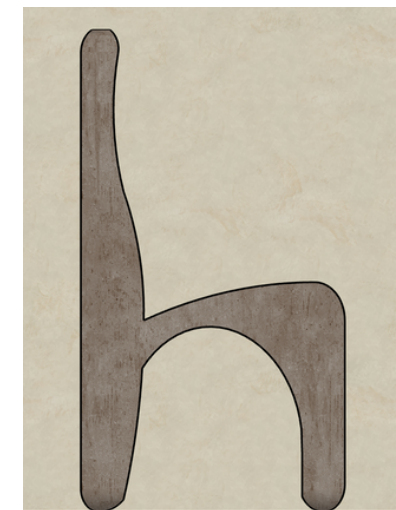
CONCRETE AS A MATERIAL IS VERSATILE, WEATHERPROOF, AND CONDUCTIVE TO TAKING GEOMETRIC FORMS, AN ESSENTIAL ASPECT OF CREATING SUCCESSFUL FURNITURE (GRAUR, 2023)



FRONT VIEW



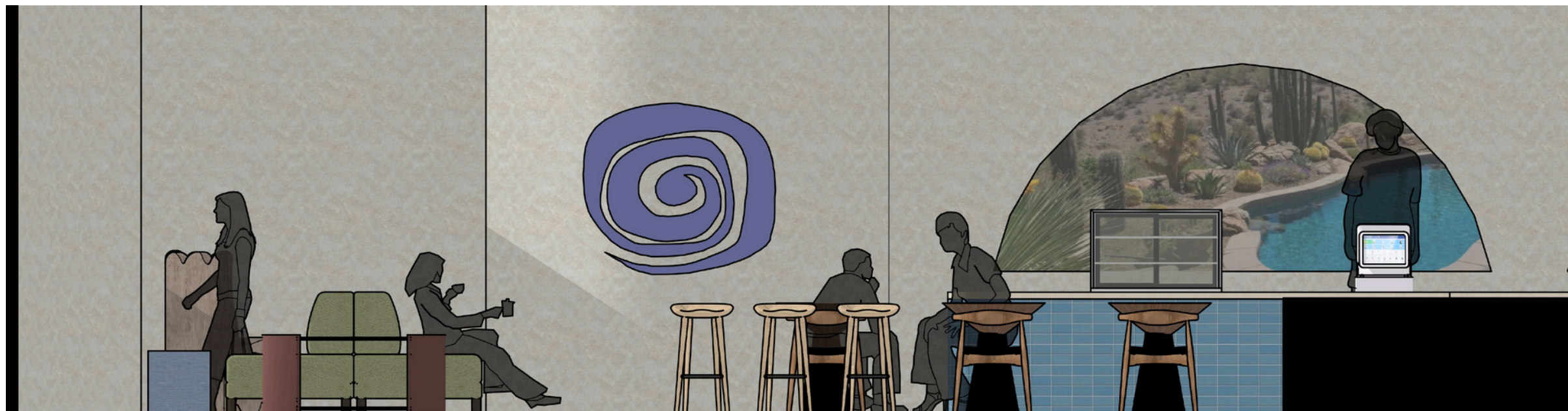
TOP VIEW



SIDE VIEW

PORTALS TONIC CAFE

elevations, ff&e, 3D views



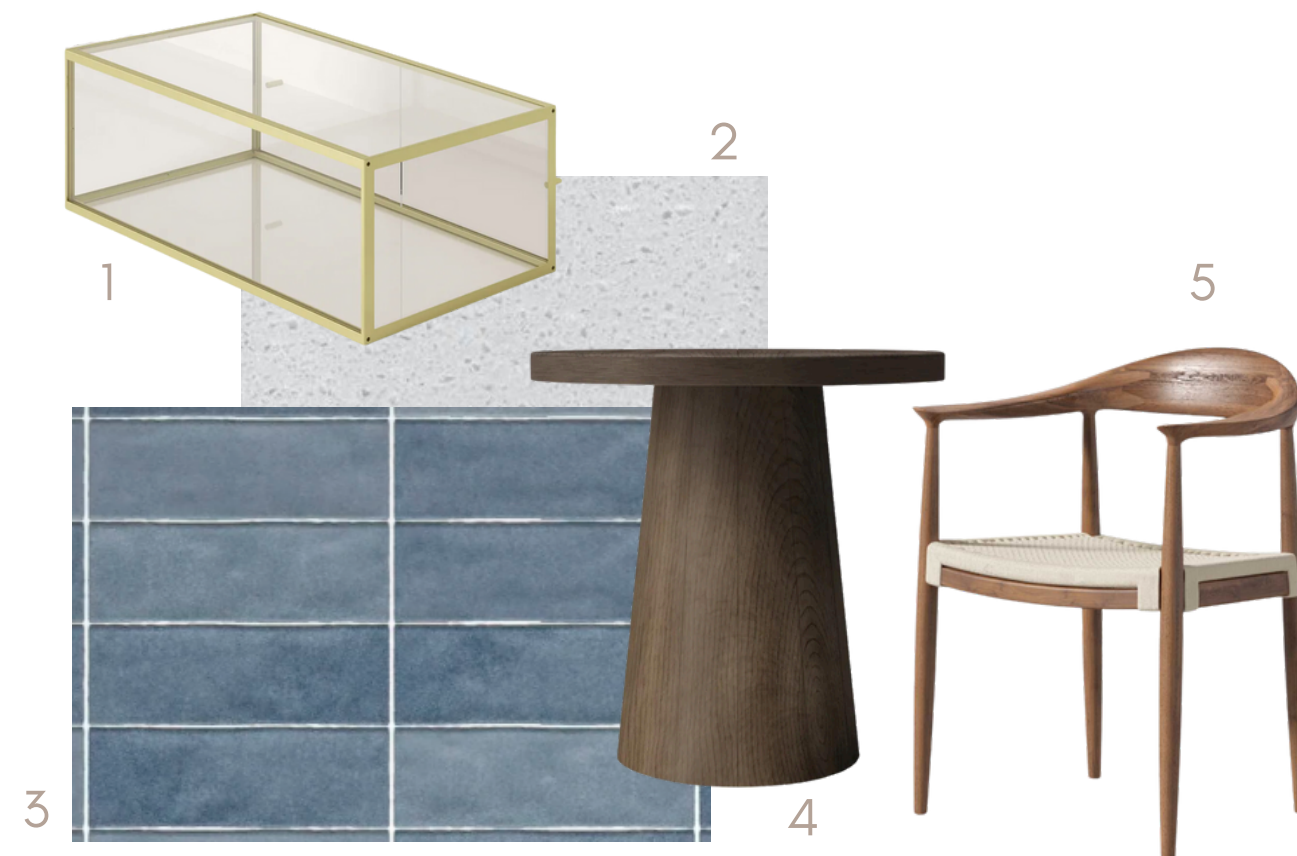
LOUNGE SEATING

TWO-SEAT AND COMMUNAL TABLES

CAFE BAR & REGISTER



THE TONIC CAFE OFFERS A CASUAL SETTING FOR GUESTS TO REFRESH AND REFUEL BEFORE OR AFTER THEIR WELLNESS EXPERIENCE



1. PASTRY DISPLAY CASE IN GOLD
2. WHITE QUARTZ SLAB COUNTERTOP
3. TEAKWOOD BENCH
4. ROUND WOODFORM CAFE TABLE
5. UPHOLSTERED WOODEN DINING CHAIR

PORTALS TONIC CAFE

elevations, ff&e, 3D views



AMPLE, VARIED SEATING
ACCOMMODATES THOSE WHO WISH TO
LINGER AND ENJOY THE DESERT VIEWS



CUSTOM BANQUETTE

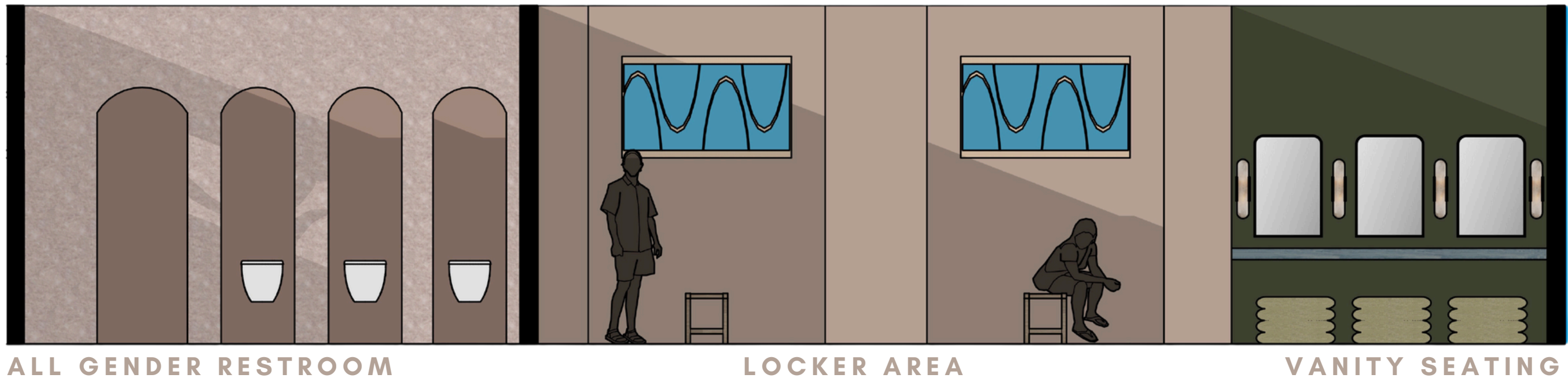
TWO-SEAT AND COMMUNAL TABLES

LOUNGE SEATING

1. CUSTOM BANQUET GREEN UPHOLSTERY 2. CUSTOM BANQUET WOODEN VENEER 3. MARU OAK ROUND COFFEE TABLE 4. GREENINGTON SKOL BAR STOOL 5. REJUVENATION FOLK CYLINDER PENDANT 6. VESTRY SOLID OAK BAR TABLE 7. GREEN MODULAR SOFA

GUEST LOCKER ROOM

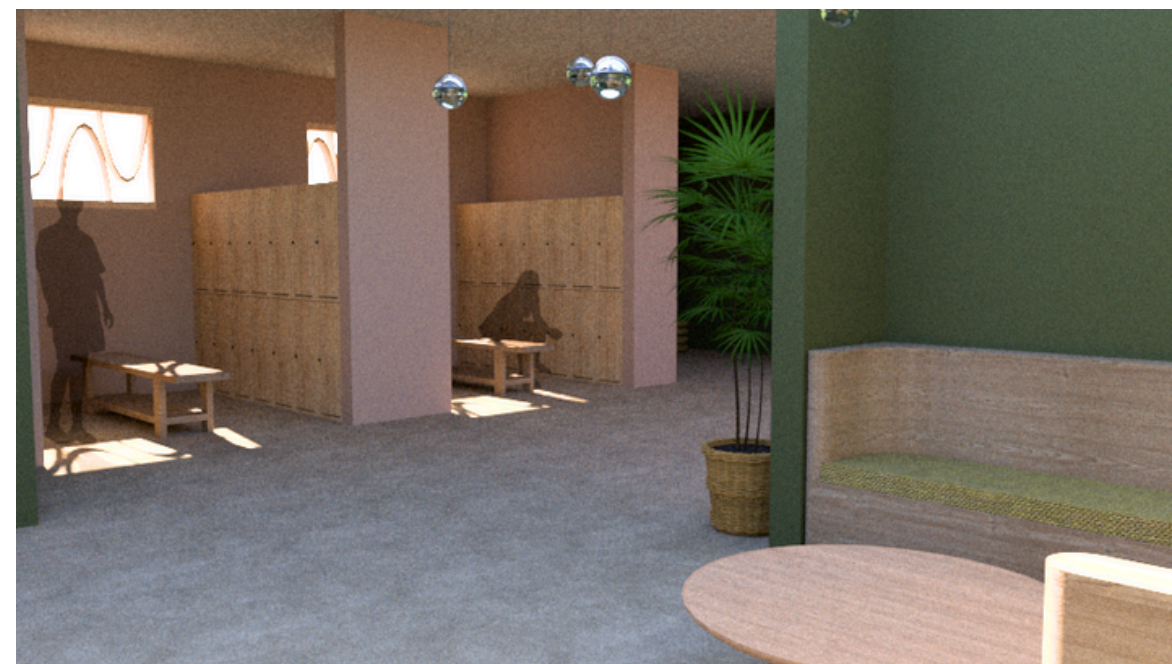
elevations, ff&e, 3D views



ALL GENDER RESTROOM

LOCKER AREA

VANITY SEATING



FOR USE BY GUESTS OF ALL GENDERS, PORTALS' LOCKER ROOM FEATURES A FOUR STALL RESTROOM AND 75 INDIVIDUAL, PASSWORD PROTECTED LOCKERS



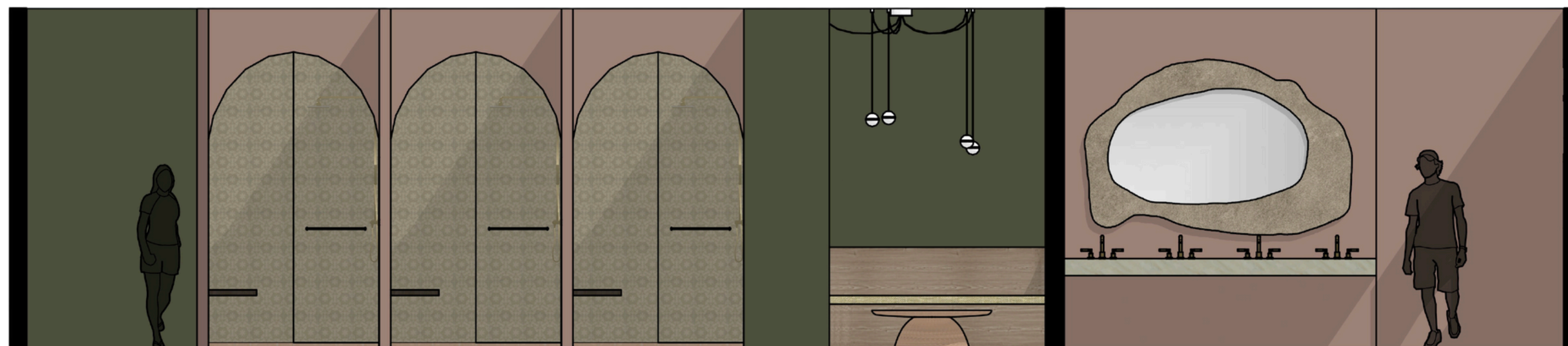
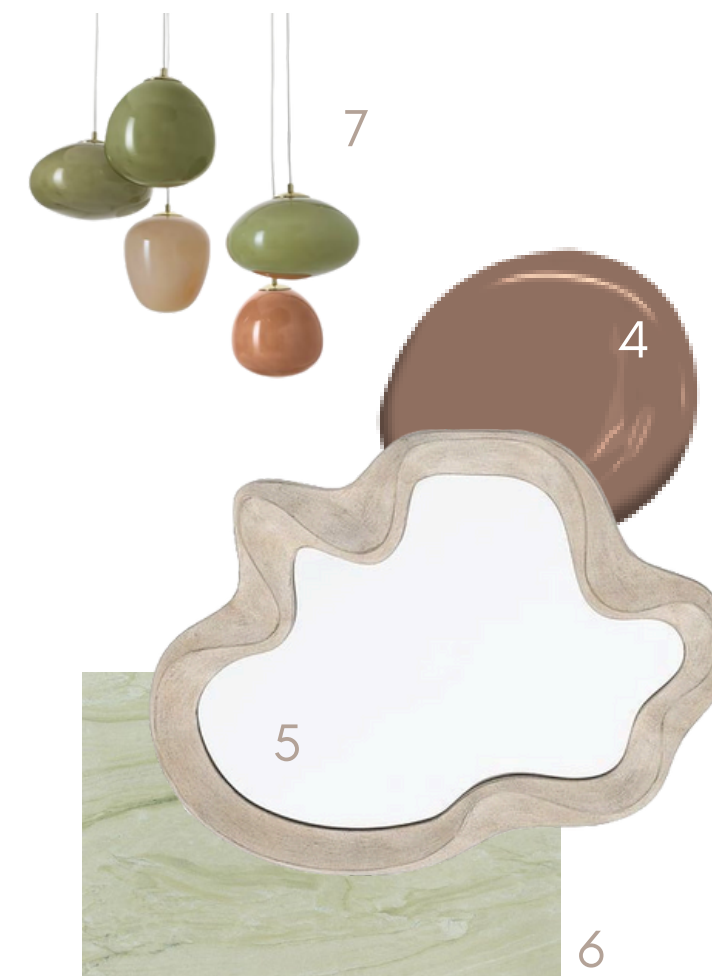
1. BENJAMIN MOORE BAYWOOD BROWN
2. DOUBLE TIER WOOD LAMINATE LOCKERS
3. TEAKWOOD BENCH
4. MELANGE ELONGATED WALL SCONCE
5. RECTANGULAR METAL FRAMED MIRROR
6. BENJAMIN MOORE ALLIGATOR ALLEY
7. BLUE DOLOMITE COUNTERTOP
8. BOUCLÉ OTTOMAN

GUEST LOCKER ROOM

elevations, ff&e, 3D views



ADDITIONAL FEATURES INCLUDE FOUR PRIVATE SHOWER/CHANGING ROOMS, AS WELL AS LOUNGE SEATING AND VANITY AREAS.



SHOWERS & CHANGING ROOMS

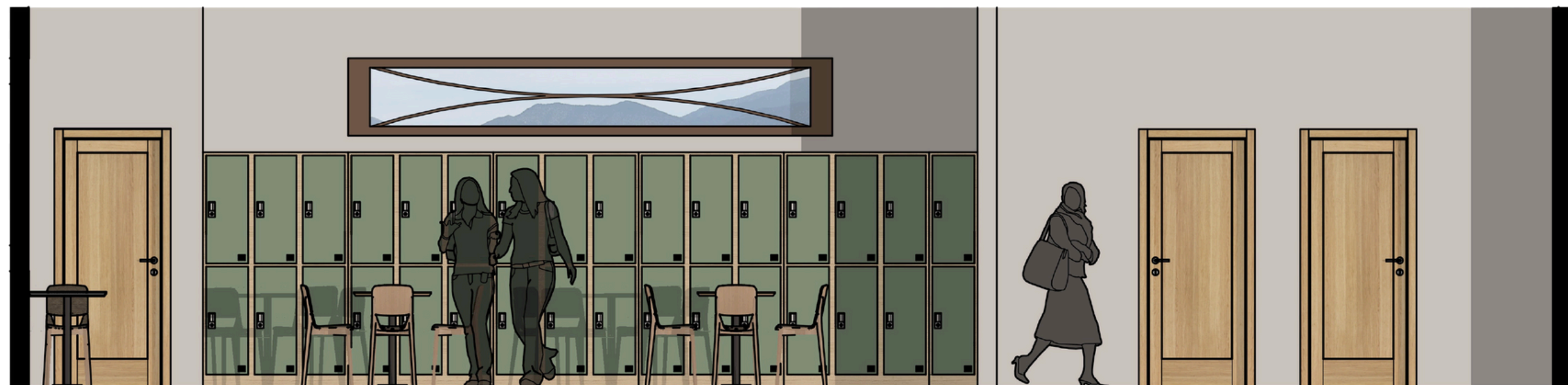
LOUNGE

ALL GENDER RESTROOM

1. KOHLER PURIST SHOWER KIT IN VIBRANT BRUSHED BRONZE 2. PORCELAIN SHOWER TILE 3. PORCELAIN SHOWER TILE 4. BENJAMIN MOORE SORREL BROWN 5. ELLOS IRE MIRROR 6. GREEN MARBLE SLAB COUNTERTOP 7. ADRIANNE CLUSTER PENDANT LIGHT

STAFF BREAK ROOM

elevations, f&e



QUIET ROOM

LOCKERS AND SEATING AREA

STAFF RESTROOMS

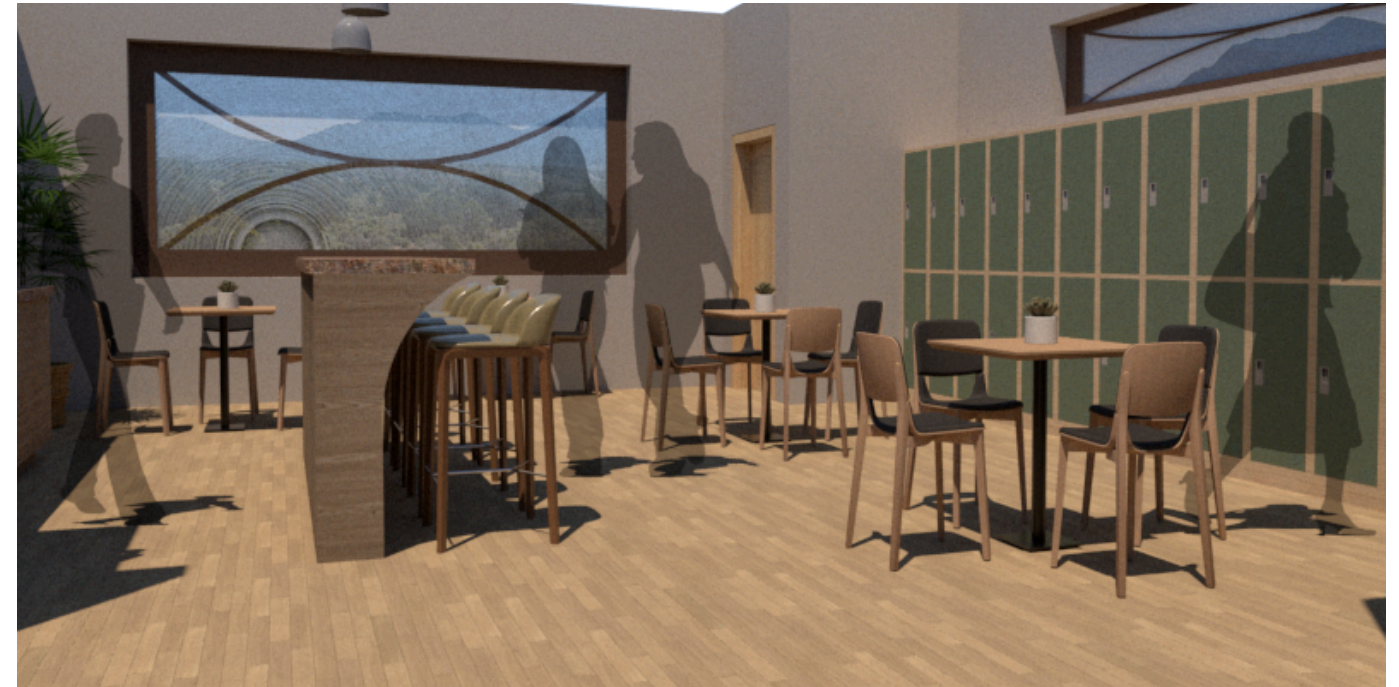


INTEGRAL TO OUR MISSION IS THE COMFORT OF THOSE WHO MAINTAIN, TEACH, AND PERFORM SERVICES AT THE PORTALS FACILITY. FOR THIS REASON WE CREATED THIS SPACIOUS AND COMFORTABLE BREAK ROOM FOR EMPLOYEES. AMENITIES INCLUDE A KITCHEN, TWO PRIVATE RESTROOMS, THIRTY-TWO INDIVIDUAL LOCKERS, AND A SOUND PROOF QUIET ROOM FOR PHONE CALLS.

1. BENJAMIN MOORE GOBI DESERT 2. SAFCO DOUBLE TIER LOCKER 3. BENJAMIN MOORE BISON BROWN 4. KOHLER TOUCHLESS FAUCET STOOL
5. ERROL DINING CHAIR 6. SQUARE ELM WOOD TABLE 7. ENGINEERED HARDWOOD FLOORING

STAFF BREAK ROOM

elevations, ff&e, 3D views



KITCHEN

SEATING AREA

LOCKERS

1. NEVA LIGHT BAR CHAIR 2. CIRRUS PENDANT LIGHTS 3. BROWN GRANITE COUNTERTOPS 4. WOOD CASEWORK VENEER 5. KOHLER COMPONENTS TOUCHLESS SINK FAUCET 6. KITCHENAID FRENCH DOOR REFRIGERATOR

REFERENCES

Graur, A. M., Patachi, L., & OPRICA, A. M. (2023). Geometric study in the realization of concrete furniture. *Journal of Industrial Design and Engineering Graphics*, 18(2), 17-22.

Maeda, M. (2021). The medical effects of hot springs and its scientific basis. *Journal of Hot Spring Sciences / Onsen Kagaku*, 70(4), 197-207.

Nordhorn, C., Scuttari, A., & Pechlaner, H. (2018). Customers' emotions in real time: measuring affective responses to service and relationship quality at the reception desk. *International journal of culture, tourism and hospitality research*, 12(2), 173-184.