

STERN GROVE FESTIVAL OFFICE AT FORT MASON



STERN GROVE OFFICE - DESIGN INSPIRATION



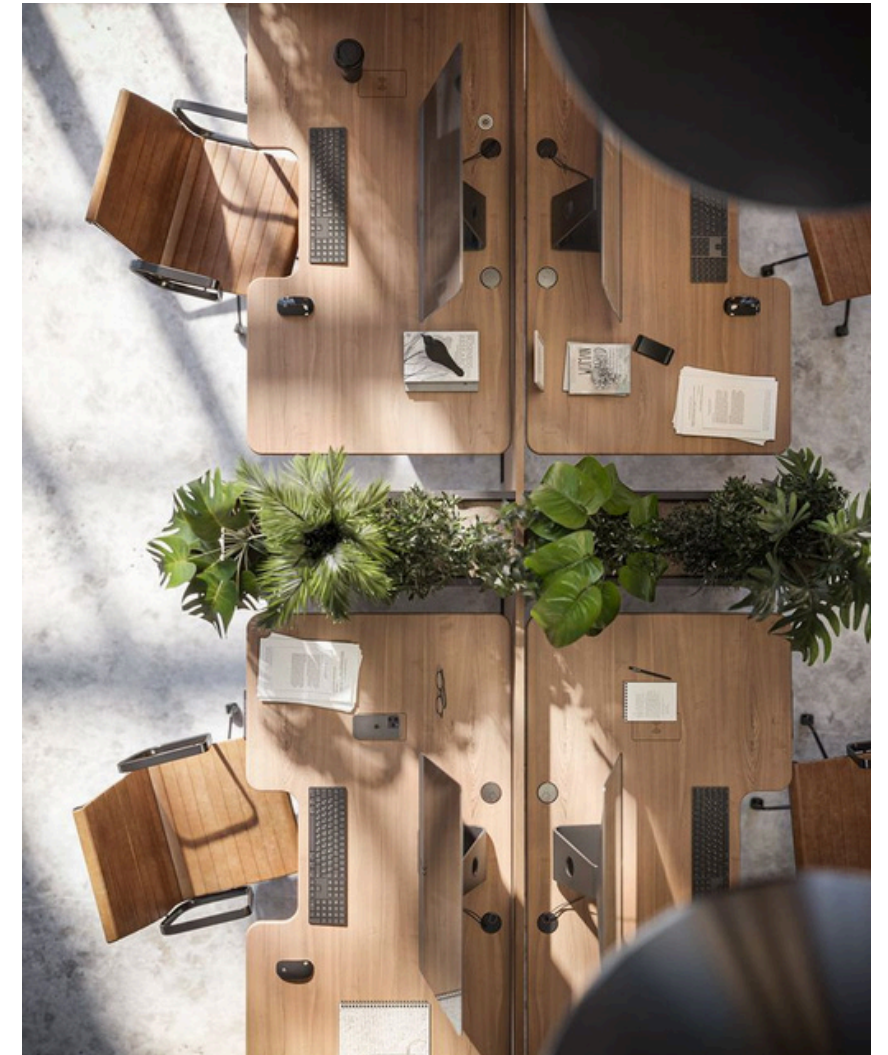
“EXCITING, VIBRANT MUSIC
ORGANIZATION”

→INSPIRED BY THE COLORS AND
MATERIALS OF THE GROVE

→MIXED USE AREAS: PRIVATE &
COLLABORATIVE

→BIOPHILIC, INVITING, AND PLAYFUL

→FOCUSED, PROFESSIONAL, AND
CREATIVE



FURNITURE CONSIDERATIONS:

- Retain folsom office conference chairs
- Conference table
- Adjustable height desks
- Task chairs
- Prefab private phone booth(s)
- Lounge chairs & couch
- Breakout seating



SOURCING OPTIONS:

- Reusing some previously acquired furniture if possible
- Gently used/refurbished (example: Local liquidators, rheaply, bettersource)
- New/custom orders

PAINT & TRIM -

- White for all walls and ceiling
 - Consider popular/common options & proceed with ~5 swatches
 - Acoustic ceiling panel frames to match wall color
- All door trims & frames in black aluminum
 - Matches light fixtures & kitchen fixtures



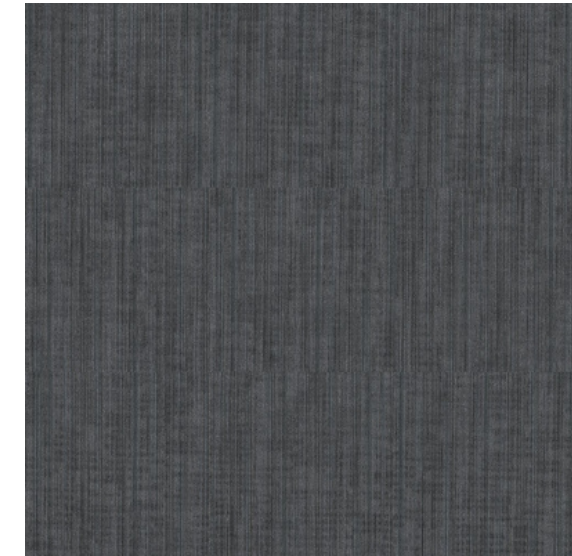
FLOORING -

- Concrete floors in larger common space
 - Grind and seal
- Carpet tiles in offices and conference room
 - Dark/medium grey to pair with concrete flooring

ShawContract Carpet Tile Options -



Hub in "Action"



Downtime in "Action"



Elevate in "Filter"



Poured in "Aggregate"

KITCHENETTE -



Countertops-



Gray Onyx



Lime Stone

- PLAM with lighter grey, white, or stone-look to match concrete floors

Cabinet finish considerations: Wood laminate

KITCHENETTE -

- Plumbing fixtures and knobs to be black powder coated
- Stainless steel appliances
 - Paneled Option
- Backsplash- Subway tile
 - Green
 - Orientation and grout color considerations



Kitchenette finish samples:
countertop, millwork, and tile

KITCHENETTE & CAFE SEATING -



The fully equipped kitchenette features a basin sink with matching fixtures, a paneled dishwasher, refrigerator, and freezer, as well as a microwave. Large overhead cabinets provide ample storage for staff use.



The cafe seating area includes two tables with four chairs each, for staff meals, breaks, or meetings. The wood of the millwork paired with green accents was inspired by the beautiful Grove where SGF hosts their annual concerts.

CAFE SEATING & DESK GROUPS -



Beyond the cafe area lies two desk groups, each comprised of six adjustable standing desks. Every desk is equipped with a Herman Miller modular storage unit that locks for staff convenience.

Each workstation also has a highly adjustable Steelcase Think chair. The desks, chairs, and storage pedestals were all sourced through a local office systems reseller, which allowed the sourcing of high quality pieces within budget.



CONFERENCE ROOM -



The spacious conference table can comfortably accommodate up to twelve people. Carpet and acoustic tiles in the space absorb excess noise, making it the perfect space for meetings in-person or online.



The horizontal lighting fixtures employed in the rest of the office are placed in zig-zag formation, for visual intrigue and even dispersal of light across the conference table.